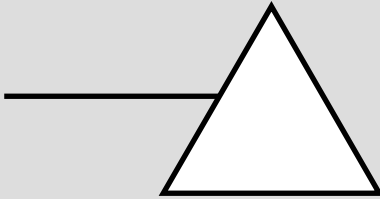


## Homework – Light

1. Complete the diagram to show what happens to light when it passes through a prism.



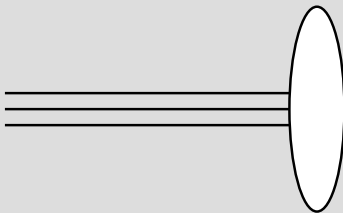
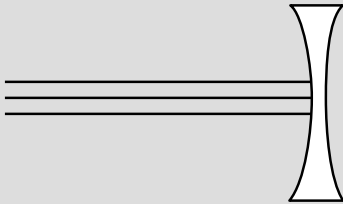
2. The three “primary” colours of light are red, green and blue. Complete the sentences below to show which colours are “blocked” by each colour of filter.

A red filter blocks \_\_\_\_\_ and \_\_\_\_\_ light.

A green filter blocks \_\_\_\_\_ and \_\_\_\_\_ light.

A blue filter blocks \_\_\_\_\_ and \_\_\_\_\_ light.

3. Complete the diagrams below to show the path of the light when it leaves the lenses.



Label the diagrams with "*concave lens*" and "*convex lens*".

4. RESEARCH ONLINE: what is the difference between "reflection" and "refraction"?