

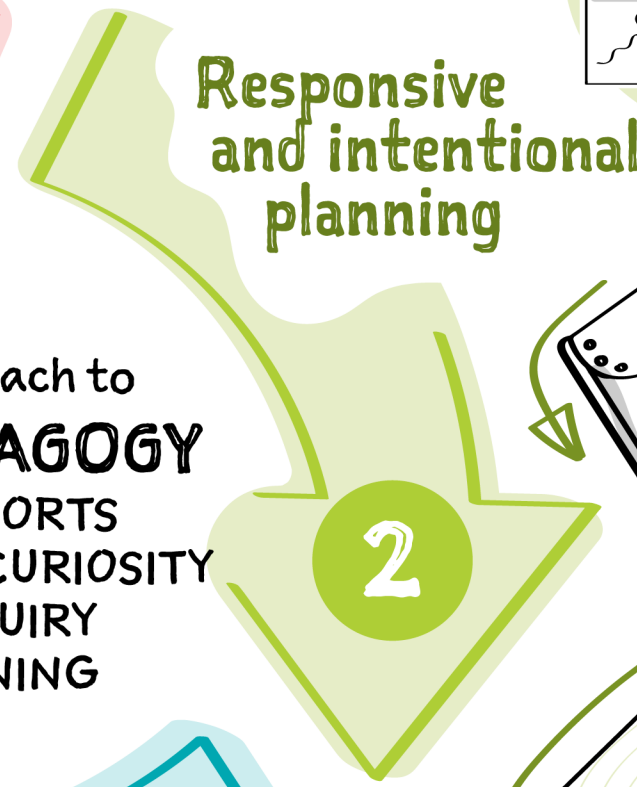
ABERDOUR PRIMARY SCHOOL

THERE IS NO LIMIT ON LEARNING IN THE CLASS

CHILDREN'S IDEAS AND INTERESTS are a key CONSIDERATION



Observation, interpretation and documentation OF LEARNING



Responsive and intentional planning

The approach to **PLAY PEDAGOGY** in P1 SUPPORTS CHILDREN'S CURIOSITY and ENQUIRY IN LEARNING



FACILITATION



OPEN-ENDED provocations and investigations **ENLARGE** CHILDREN'S LEARNING

Staff ensure CHILDREN RECEIVE THEIR ENTITLEMENT TO A FULL CURRICULUM

LEARNING IS **EXCITING AND CHALLENGING**

OBSERVATION used well by staff

MOTIVATION ENGAGEMENT ENTHUSIASM

Observing CHILDREN'S DEVELOPMENT AND LEARNING informs next steps

CHILDREN REGULARLY LEAD THEIR OWN LEARNING

EXPERIENCES ARE FLEXIBLE

CHILDREN DEMONSTRATE INDEPENDENCE AS LEARNERS

Resources are refreshed ACCORDING TO CHILDREN'S INTERESTS

Good use is made of the **OUTDOOR SPACE** and the LOCAL AREA

REALISING THE AMBITION

THE LEARNING ENVIRONMENT **FOSTERS** CURIOSITY AND CREATIVITY

PLAY SPACES ARE VARIED AND INTERESTING

