

United in Purpose

to enhance:
our lives
our community
our world



Larbert Cluster Schools

Effective Contributors • Successful Learners • Responsible Citizens • Confident Individuals

@LarbertHigh





Targeted Support



Learning Intention

To outline what Targeted Support means at Larbert High and provide an opportunity to reflect on Targeted Support in your school.

Success Criteria

- Everyone will know what Targeted Support means at LHS.***
- Everyone will have met someone new and shared what Targeted Support means in different contexts.***
- Everyone will have identified something useful to help develop Targeted Support in their own school.***



Thinking



Digital Learning



Enterprise



Leadership



Literacy



MESP



Numeracy

Targeted Support

Welcome

Please get to know the people at your table and begin a Targeted Support conversation.

Please fill in the sheet – particularly the last question.



Targeted Support

Task 1 – What does Targeted Support mean in your school?

Who identifies targeted pupils?

Who works with targeted individuals or groups?

Which groups of pupils have you targeted, or might you target?

What are the big questions you have about Targeted Support?

The worksheet features a central crest with the letters 'LHS' and a banner below it that reads 'optimum sequi'. There are four small photographs at the top and four at the bottom, depicting various school activities and interactions.

Targeted Support

Who:

2 Principal Teachers of Targeted Support

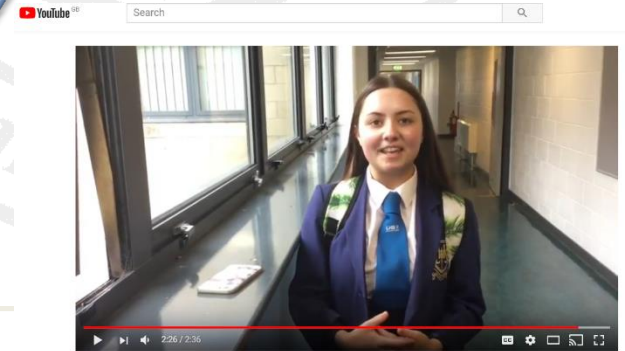
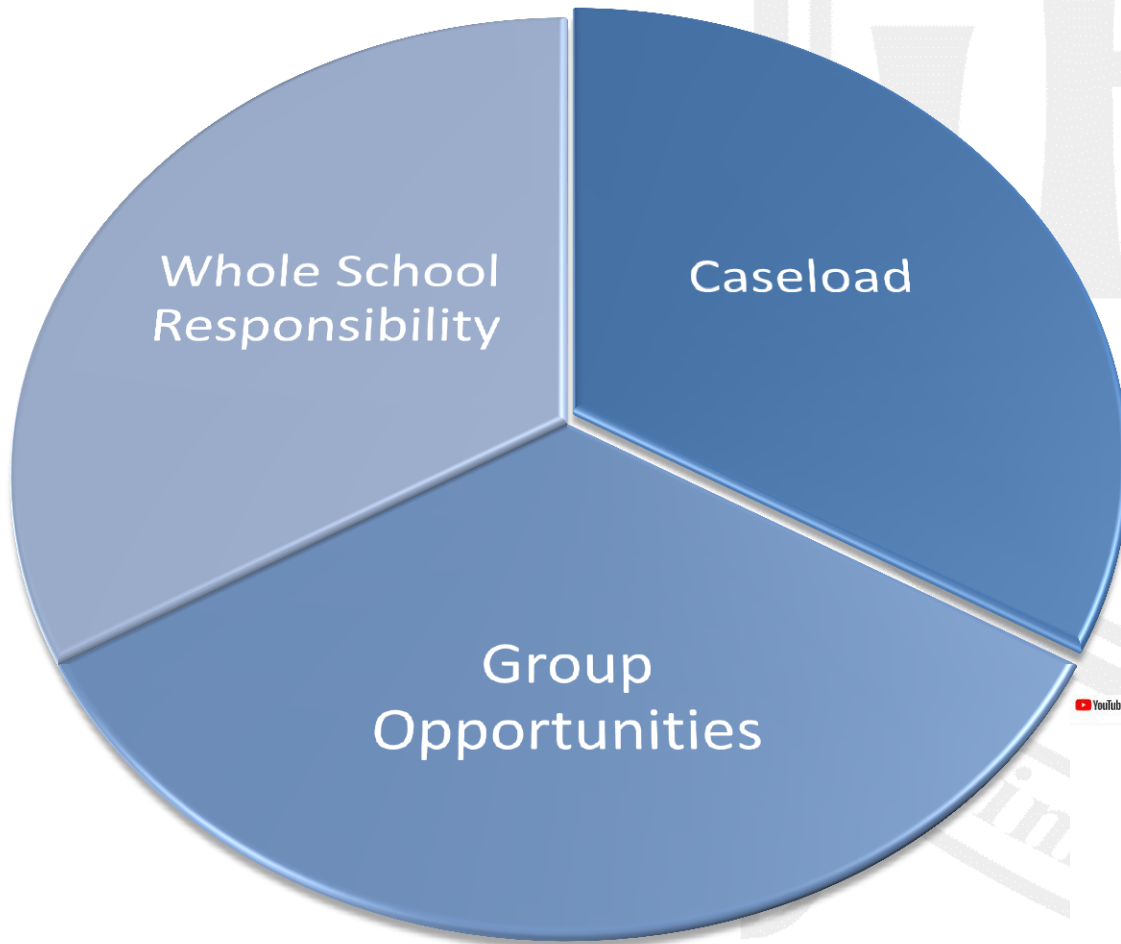
Working with

Year Teams -

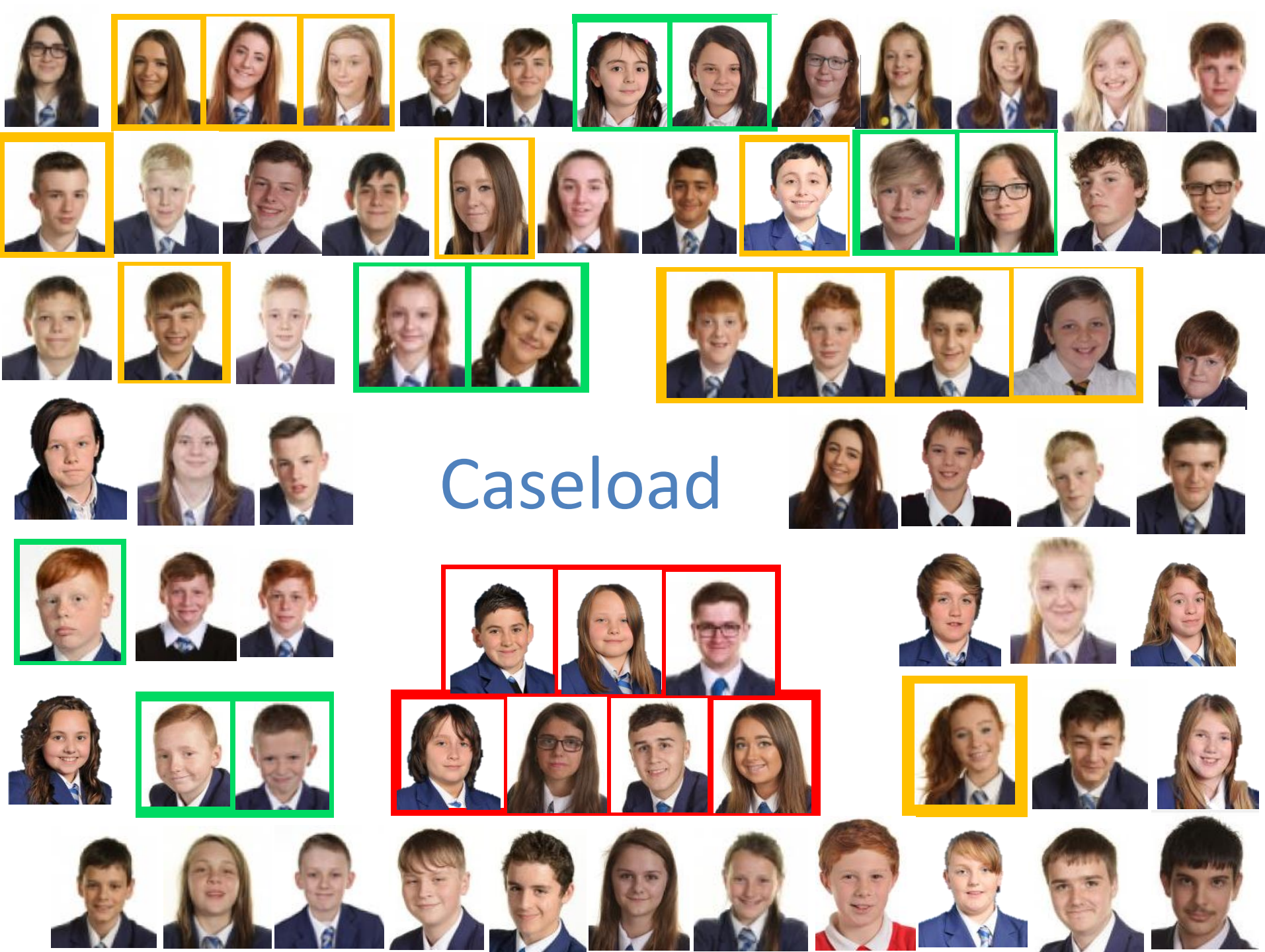
DHT, PT Pup Sup, ASN Teacher, NIF Support Teacher



Targeted Support Structure



What is TS. Monday



Caseload

Targeted Support

In your group...

use these scenarios to consider how you could offer targeted support to some identified groups.



Targeted Support

Task 2: What might work for these groups? What could be a measure of success?

5. A group of 6 S4 boys are failing to be respectful to some staff, truant and are at risk of not achieving in a number of subjects.

IDEAS:
MEASURE OF SUCCESS:

6. A group of 12 S3-4 pupils are identified as having been involved in Police Concern Reports mentioning substance abuse.?

IDEAS:
MEASURE OF SUCCESS:

7. A number of pupils are at risk of leaving school without 5 National 4 qualifications.

IDEAS:
MEASURE OF SUCCESS:

8. A group of S1 pupils are coming to pupil support a lot because they are struggling to form strong friendships.

IDEAS:
MEASURE OF SUCCESS:

9. S1 boys with a high number of behavior referrals.



Group Work Opportunities



“...know the young people very well and use this data to plan and evaluate appropriate interventions.”

Targeted Support



Targeted Support

Task 3: What is involved in your school's P7 Transition Programme?

Which groups could be offered Targeted Support in the Induction Process?

Task 4: Who are the partners who currently help you to support Targeted Groups?

What procedures do you have for developing your work with partners?



In your group...

use these scenarios to consider how you could offer targeted support to some identified groups.



Enhanced Transition Programme

SCHOOL CHOICE OF QI: 2.5 FAMILY LEARNING

This indicator focuses on increasing the positive impact of working with families to improve learning and achievement. The emphasis is on schools working in partnership with others in the community to support families to secure better outcomes through programmes which enable them to improve literacy, numeracy and health and wellbeing.

- *Engaging families in learning*
- *Early intervention and prevention*
- *Quality of family learning programmes*



**Community Learning
and Development**

Family Learning School Improvement Group

Bush Craft – Boys and Dads

United In Purpose Parents' Programme

Primary Transitions

Languages Ambassadors – basic modern
language work for families

Resilience – Senior Study Skills

Art Therapy

Tasty Homework



Family Mediation

Connect services

Axis Service Cluaran Service



Falkirk Council



FDAMH
LIGHT IN A DARK PLACE

Intensive Family Support Service

Family Support Service

“The school has established an Agency Led group to plan and develop Family Learning approaches across the school. A recent curriculum information evening was extended to partners such as CLD, Social Work and SACRO. This is a good start to promoting partnership working and developing Family Learning initiatives.”

Targeted Support

Next Steps:

- Develop creative ways of communicating with staff – OTB / News report / Case Conferences / email / Calendar
- Use Improvement Science to ensure the impact of interventions is measured in the most useful way
- Continue to develop links with Wider Pupil Support and ASN team – and new PEFSCOT PT and Attendance and Welfare Officer

Targeted Support

Next Steps (cont):

- Develop new Interventions – particularly for pupils who have experienced multiple Adverse Childhood Experiences
- Create opportunities for interested staff to work with Targeted Support
- Develop an internal Attendance Panel
- Keep looking for a Magic Wand

