



Closer To Home - better outcomes, sustainable services

Falkirk Council

Our Ambitions

1. Safely reduce the number of children looked after away from home
2. All our children, including the most vulnerable, will achieve in learning, life and work
3. Families will be central to decision making and planning for their children

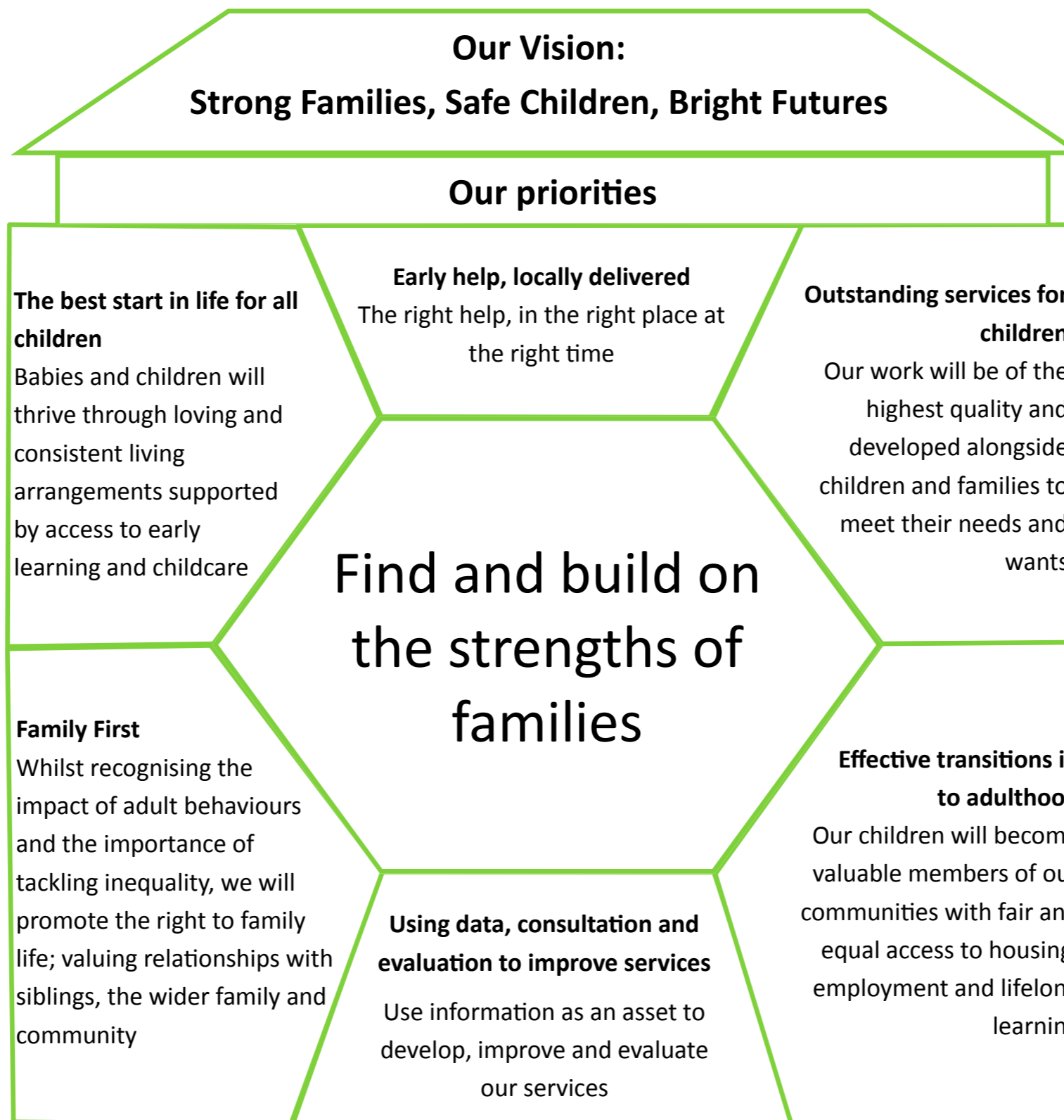
Our Approach

1. Support families to care safely for their children at home or within the wider family network
2. Identify risk and provide support as early as possible to minimise any child's exposure to harm
3. Identify local care placements where children can't remain safely within their own family
4. Support children, young people and families for as long as needed
5. Search for and build on the strengths of families and allow them to flourish
6. Children attend local schools
7. Provide our workforce with the time and tools to make and sustain trusted relationships with families
8. Nurture children's development with increased early learning and childcare provision
9. Work in a timely, innovative and solution focused manner to prevent relationship breakdown within families
10. Our vision, strategy and plans will be consistent with our partners and the wider council
11. Target services to reduce attainment gaps and enable our children and young people to realise their potential through and beyond school
12. Know what we have done and how it has made a difference
13. Our children will be included and engaged in all aspects of life and their wider community

Falkirk Council Children's Services:

A 5 year strategy to deliver better outcomes for children and young people who are on the edges of care or care experienced

PHASE 1 - 'Moving Closer to Home'



GETTING IT RIGHT FOR EVERY CHILD (GIRFEC)

Phase 1 - Closer to Home Projects

Family Support Services

- Falkirk will have less than 10% of looked after children in residential placements

Foster Carer Recruitment

- We will recruit an additional 30 foster carers over the next 5 years

Supported Accommodation Options for Care Leavers

- Care leavers will have more housing and support options enabling good transitions to adulthood

Procuring for the Future

- Targeted services will be developed and commissioned to meet the needs and aspirations of children and young people

Family First Approach

- By offering financial support, the Council aims to empower families to make the right choices

Permanence and Care Excellence (PACE)

- Permanent placements will be found for children who need them

Best Practice in Child Protection Systems

- Best practice in child protection and risk management arrangements

Children's Services Related Projects

Additional Support Needs Redesign

- Working with families and partners to meet the changing needs of children and young people in Falkirk schools.

Early Learning and Childcare Expansion

- Opportunities provided by early learning and childcare expansion will be fully maximised to engage with families of very young children

Social Work Information System (SWIS) Replacement

- The replacement Social Work Information System will free staff to spend more of their time with families
- Use local and national data to evidence interventions, improve our services and engage with our communities
- Understand the experiences of service users and actively consult with them to develop and improve