

Child's toy

Information

In this task you are producing graphics for a toy manufacturer. The toy is a simple block sorter which uses geometric shapes and forms. This toy is made from natural wood and stained with colours to suit a young child.

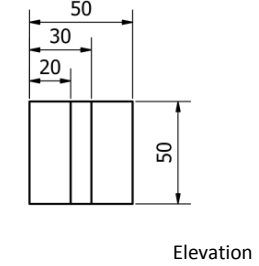
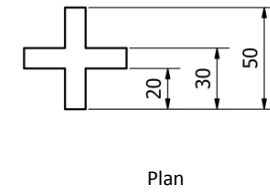
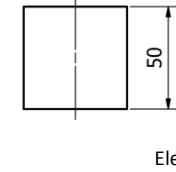
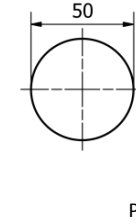
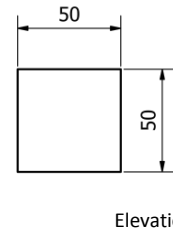
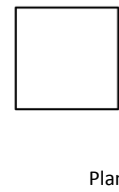
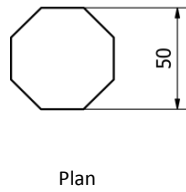
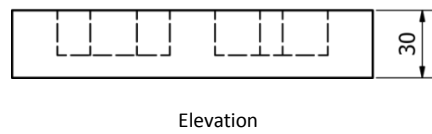
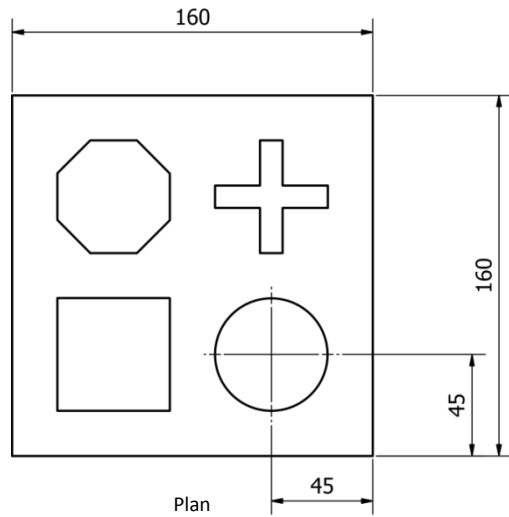
You are tasked with:

- ◆ Interpreting the orthographic drawings and using the sizes to produce a 1:1 pictorial drawing showing a minimum of two blocks assembled to the base in the correct position. Your pictorial should be either an isometric or a planometric.
- ◆ Drawing two related assembled orthographic elevations of the base with a minimum of two blocks inserted — show hidden detail.
- ◆ Creating a realistic rendering of the toy showing natural wood material and colour stain, with shadows or reflections on a surface — showing a minimum of two blocks inserted.

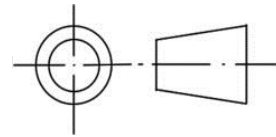
In tackling your work you should:

- ◆ Ensure your pictorial drawing is accurate and that your line quality is very good.
- ◆ Ensure that you have used correct conventions.
- ◆ Be prepared to answer questions about how you created the drawing and the techniques and/or commands you used.

Orthographic drawings are included to assist you in your tasks. For the purpose of this assessment, the blocks are the same size as the hole



Gap between each block is 20mm.
 Gap between each block and outside edge is 20mm.
 The blind hole for each block is 20mm deep.



Not to scale.
 All dimensions are in millimetres.