

Why Study Geography?

- Course content/timelines
- E's and O's
- Forms of assessment
- Skills developed



The study of geography is about more than just memorizing places on a map. It's about understanding the complexity of our world, appreciating the diversity of cultures that exists across continents. And in the end, it's about using all that knowledge to help bridge divides and bring people together.

— Barack Obama —

AZ QUOTES

A Curriculum for Excellence

- a coherent, more flexible and enriched curriculum from 3 to 18.

Numeracy

Health and Wellbeing

Literacy

...and for Geographers -
Social Studies , People
and Place



curriculum for excellence:
social studies
experiences and outcomes

www.curriculumforexcellencescotland.gov.uk



Do students' knowledge and understanding of geography develop as they move through their school career?

GEOGRAPHICAL ISSUE - MIGRATION

S1- Risky Places - Natural Hazards

Earthquakes - Haiti

Formative assessment
 Classifying information e.g
 human and physical impacts of
 earthquakes

Summative assessment
 End of rotation test



Early	First	Second	Third	Fourth
<p>I explore and discover the interesting features of my local environment to develop an awareness of the world around me.</p> <p style="text-align: right; color: magenta;">SOC 0-07a</p>	<p>I can describe and recreate the characteristics of my local environment by exploring the features of the landscape.</p> <p style="text-align: right; color: magenta;">SOC 1-07a</p>	<p>I can describe the major characteristics of features of Scotland's landscape and explain how these were formed.</p> <p style="text-align: right; color: magenta;">SOC 2-07a</p> <p>I can describe the physical processes of a natural disaster and discuss its impact on people and the landscape.</p> <p style="text-align: right; color: magenta;">SOC 2-07b</p>	<p>Having investigated processes which form and shape landscapes, I can explain their impact on selected landscapes in Scotland, Europe and beyond.</p> <p style="text-align: right; color: magenta;">SOC 3-07a</p>	<p>I can explain how the interaction of physical systems shaped and continue to shape the Earth's surface by assessing their impact on contrasting landscape types.</p> <p style="text-align: right; color: magenta;">SOC 4-07a</p>



Do students' knowledge and understanding of geography develop as they move through their school career?

GEOGRAPHICAL ISSUE - MIGRATION

S2 Brazil Unit - Focus is on Rural to Urban Migration

Increased level of challenge

Idea of local, national and international

Introducing more complex issues- inequality



Do students' knowledge and understanding of geography develop as they move through their school career?

GEOGRAPHICAL ISSUE - MIGRATION

National 4 and 5

Increased level of challenge

Introducing controversial issues
Challenging stereotypical views

Encouraging young people to understand geographical issues from different viewpoints.

To stimulate discussion and friendly debate!



Can students use geographical skills in more complex and precise ways?

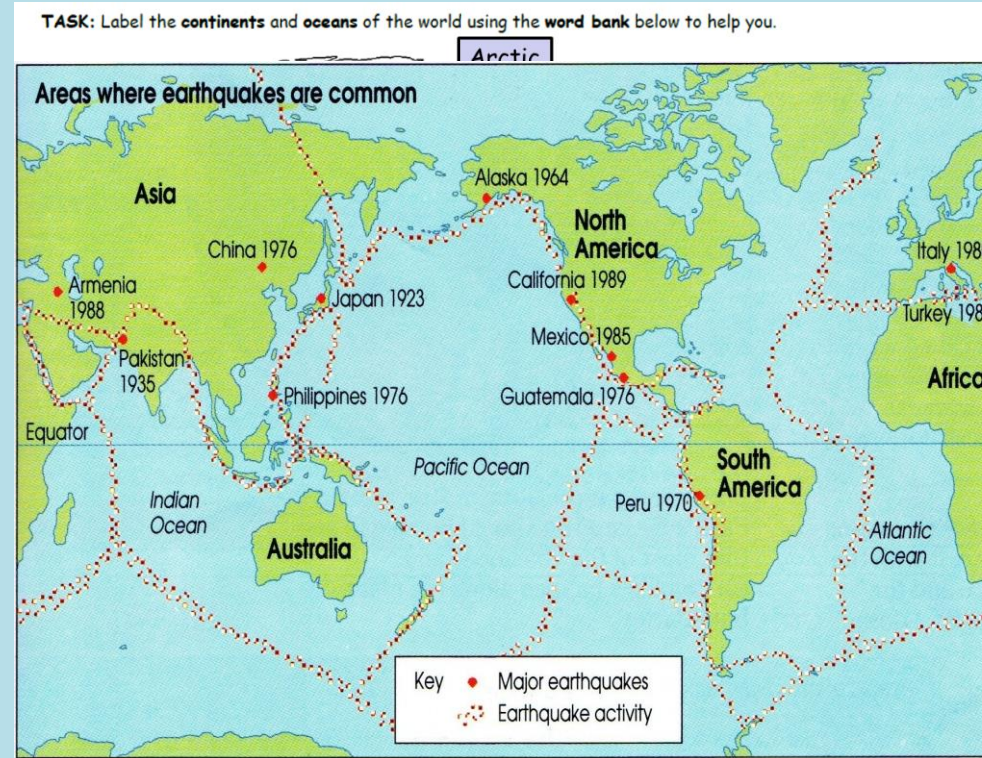
GEOGRAPHICAL SKILLS

S1- MAPPING

Progression from Primary -

Using an Atlas, interpreting keys etc.

Introducing thematic maps



Through activities in my local area, I have developed my mental map and sense of place. I can create and use maps of the area.

SOC 1-14a

To extend my mental map and sense of place, I can interpret information from different types of maps and am beginning to locate key features within Scotland, UK, Europe or the wider world.

SOC 2-14a

I can use a range of maps and geographical information systems to gather, interpret and present conclusions and can locate a range of features within Scotland, UK, Europe and the wider world.

SOC 3-14a

I can use specialised maps and geographical information systems to identify patterns of human activity and physical processes.

SOC 4-14a

Can students use geographical skills in more complex and precise ways?

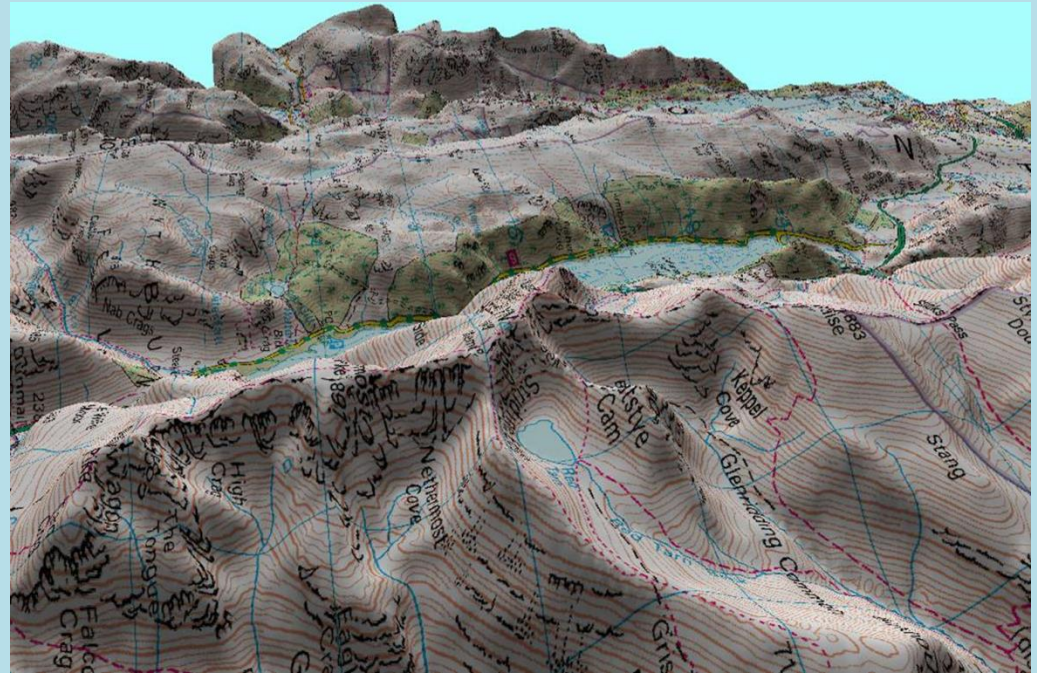
GEOGRAPHICAL SKILLS

S2 -Ordnance Survey Maps and Geographic Information Systems - street view, google earth, local area maps showing areas at risk from flooding etc.

National 4 and 5 - Land-use maps today in Glasgow!

Reading and understanding contour lines - map features

6 figure grid references - hugely beneficial to many doing Duke of Edinburgh



Through activities in my local area, I have developed my mental map and sense of place. I can create and use maps of the area.

SOC 1-14a

To extend my mental map and sense of place, I can interpret information from different types of maps and am beginning to locate key features within Scotland, UK, Europe or the wider world.

SOC 2-14a

I can use a range of maps and geographical information systems to gather, interpret and present conclusions and can locate a range of features within Scotland, UK, Europe and the wider world.

SOC 3-14a

I can use specialised maps and geographical information systems to identify patterns of human activity and physical processes.

SOC 4-14a

52 Timeline 2017/18

Wk	Week Endin	Topic	Homework
39	7	Introduction to course.	
40	16.06.17	Extreme Environments	
41	7	Extreme Environments	
	30.06.17	SUMMER HOLIDAY Begins 27.06.17	
1	19.08.17	Extreme Environments	
2	7	Extreme Environments	Homework 1
3	01.09.17	Extreme Environments	
4	7	Extreme Environments	Homework 2
5	15.09.17	Extreme Environments	
6	7	Extreme Environments	Homework 3
7	7	Extreme Environments	
8	06.10.17	Extreme Environments	Revision
9	13.10.17	Extreme Environments	
10	21.10.17	OCTOBER WEEK	
11	27.10.17	Climate Change	
12	03.11.17	Climate Change	Homework 4
19	13	Climate Change	
14	17.11.17	Climate Change	Renewable energy project 3
15	24.11.17	Climate Change	Project
16	01.12.17	Climate Change	Project
17	08.12.17	Climate Change	
18	15.12.17	Climate Change	
19	22.12.17	Climate Change	Revision
21	23.12.16	CHRISTMAS HOLIDAY	
22	04.01.17		
23	05.01.18	Climate Change Assessment	
24	12.01.18	Globalisation	
25	19.01.18	Globalisation	Homework 5
26	26.01.18	Globalisation	
27	8	Globalisation	Homework 6
28	8	Globalisation	
29	16.02.18	Globalisation	Homework 7
30	8	Globalisation	
31	8	Globalisation	Revision
32	9.3.18	Globalisation Assessment	
33	16.03.18	Brazil	
34	8	Brazil	Homework 8
35	8	Brazil	
36	06.04.18	EASTER HOLIDAY	
37	13.04.18		
38	8	Brazil	
39	8	Brazil	Homework 9
40	8	Brazil	
41	11.05.18	Brazil	
42	18.05.18	Brazil	Brazil Leaflet
43	8	Brazil	
44	01.06.18	Brazil	Revision

53 National 5 Timeline 2017/18

Wk	Week Endin	Topic	Homework
39	09.06.17	Skills & Map work	
40	16.06.17	Skills & Map work	
41	7	Skills & Map work	
	30.06.17	SUMMER HOLIDAY Begins 27.06.17	
1	19.08.17	Introduction to National Geography	
2	7	Glaciation	Homework 1. Part Paper Ass.
3	01.09.17	Glaciation	
4	7	Glaciation	Homework 2. Part Paper Ass.
5	15.09.17	Glaciation	
6	22.09.17	Glaciation	Homework 3. Part Paper Ass.
7	7	Glaciation	
8	06.10.17	Glaciation	
9	13.10.17	Glaciation	Revision for assessment
10	21.10.17	OCTOBER WEEK	
11	27.10.17	Assessment	
12	03.11.17	Weather	Homework 4. Part Paper Ass.
13	10.11.17	Weather	
14	17.11.17	Weather	Homework 5. Part Paper Ass.
15	24.11.17	Weather	
16	01.12.17	Weather	Homework 6. Part Paper Ass.
17	08.12.17	Weather	
18	15.12.17	Weather	Revision for assessment
19	22.12.17	Assessment	
21	23.12.16	CHRISTMAS HOLIDAY	
22	04.01.17		
23	05.01.18	Environmental Hazards	Homework 7. Part Paper Ass.
24	12.01.18	Environmental Hazards	
25	19.01.18	Environmental Hazards	Homework 8. Part Paper Ass.
26	26.01.18	Environmental Hazards	
27	02.02.18	Environmental Hazards	Homework 9. Part Paper Ass.
28	09.02.18	Environmental Hazards	
29	16.02.18	Environmental Hazards	Revision for assessment
30	8	Assessments	
31	8	Urban	
32	9.3.18	Urban	Homework 10. Part Paper Ass.
33	16.03.18	Urban	
34	23.03.18	Urban	Homework 11. Part Paper Ass.
35	8	Urban	
36	06.04.18	EASTER HOLIDAY	
37	13.04.18		
38	8	Urban	
39	8	Urban	Homework 12. Part Paper Ass.
40	8	Urban	
41	11.05.18	Urban	Homework 13. Part Paper Ass.
42	18.05.18	Urban	Revision for
43	8	S3 Assessment	
44	01.06.18	Assignment Intro & Urban Fieldtrip- Glasgow	Assignment Preparation
45	8		

54 National 5 Timeline 2017/18

Wk	Week Ending	Topic	Homework
39	09.06.17	Assignment processing data	
40	16.06.17	Assignment processing data	Assignment Preparation
41	7	Assignment processing data	
	30.06.17	SUMMER HOLIDAY Begins 27.06.17	
1	7	Urban Recap	
	25.08.17	Urban- developing world city / Assignment	Homework 1. Part Paper Ass.
2	7	Urban- developing world city / Assignment	
3	7	Urban- developing world city / Assignment	
4	7	Urban- developing world city / Assignment	Homework 2. Part Paper Ass.
5	7	Urban- developing world city / Assignment	
6	7	Urban- developing world city / Assignment	
7	7	Urban- developing world city / Assignment	
8	7	Urban- developing world city / Assignment	
9	7	Urban- developing world city / Assignment	
10	7	Urban- developing world city / Assignment	
11	7	Urban- developing world city / Assignment	
12	7	Urban- developing world city / Assignment	
13	7	Assignment Preparation	Assignment Preparation
14	7	Assignment Assessment (1 Hour)	
15	#####	Rural	
16	#####	OCTOBER WEEK	
17	#####	Rural	Homework 3. Part Paper Ass.
18	05.11.17	Rural	
19	13	Rural	Revision for assessment
20	17.11.17	Rural Assessment	
21	7	Population	Homework 4. Part Paper Ass.
22	7	Population	
23	7	Population	Homework 5. Part Paper Ass.
24	15.12.17	Population	
25	7	Health	Homework 6. Part Paper Ass.
26	6	CHRISTMAS HOLIDAY	
27	to 04.01.18		
28	23	Health	Homework 7. Part Paper Ass.
29	24	Health	
30	25	Prelim revision	Revision
31	26	Prelim revision	Revision
32	27	Health	
33	28	Health	Homework 8. Part Paper Ass.
34	29	Coasts	
35	30	Coasts	Homework 9. Part Paper Ass.
36	31	Coasts	
37	32	Coasts	Homework 10. Part Paper Ass.