



S2 Information Evening

November 2018

School Prayer

Read by Oliver Ngouajio

Jesus as a child you grew in learning and wisdom.
Bless Saint Ninian's High School
a community of faith and love
where young people learn, work and grow together.
Help us to make our school a place
where teachers are valued for their dedication;
where pupils are encouraged to develop their talents
and where all staff, young people and parents -
work together
in trust and friendship.
Live among us now and forever.

Amen



Format for the evening

- **Mrs Wilson, Acting Depute Head Teacher of S2**
 - **S2 Progress and Experience**
 - **Mary Treesa Biju**
 - **Preparing for 3rd year**
 - **Maisie Pollock**
- **Mr Kerr, Acting PT Development**
 - **Youth Philanthropy Initiative**
-
- **Visit to Departmental workshops**
- **Eucharistic Adoration – Oratory**
- **Tea/Coffee/Refreshments – Canteen Area**

Mary Treesa Biju

My Experience of S2 So Far.....

S2 Progress

- Interim reports
- Feedback from teachers
 - Settled in well to their subjects
 - Pupils are working hard
 - Rising to the challenge
- Classroom visits
- Conversations with pupils

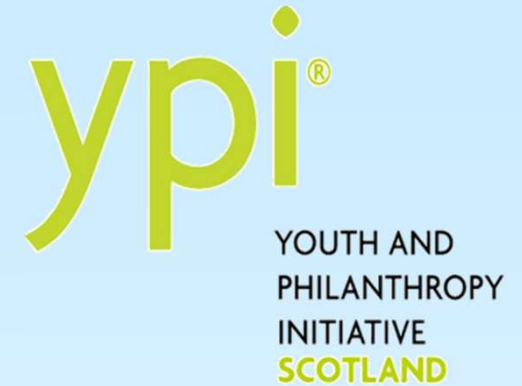
S2 have their say...Pupil Council September

- S2 was enjoyable so far
- Choosing their options allowed them to meet new people and expand friendships
- Clubs also allowed them to develop social skills as well as academic skills eg confidence, leadership, planning etc
- Resources were thought to be excellent eg the availability of laptops in every department.
- The pupils felt that there was a very positive ethos in the school. This was shown in the relationships between pupils and staff.
- The climate was one that was favourable to learning and pupils felt they were encouraged to do their best.
- YPI was seen as allowing pupils to develop their knowledge and social awareness and also allowing personal development in terms of working with others, organising and assuming various roles.
-

yp*i*[®]

YOUTH AND
PHILANTHROPY
INITIATIVE
SCOTLAND

What is YPI?



- YPI is an active citizenship programme
 - an innovation of the Toskan Casale Foundation
 - principally funded and managed in Scotland by The Wood Foundation
- Engages a full year group through an interdisciplinary curricular programme
 - RE and PSHE
- Real life hands on experience of philanthropy, awareness of social service issues and the work of local charities
- Each school is responsible for directing a £3000 grant to a local charity

The YPI Process

Research, Visit, Present

goypi.org

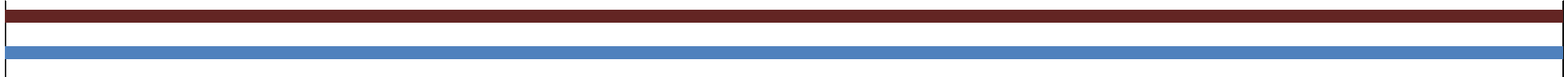


YPI Launch

Students learn how the programme works through a year group assembly or class based introduction.

YPI Launch

- S2 Assembly
- 23rd August Period 3
- Alistair Cairns (YPI)



The YPI Process

Research, Visit, Present

goypi.org

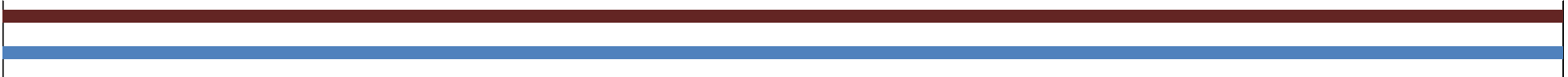


YPI Launch

Students learn how the programme works through a year group assembly or class based introduction.

RE (5 lessons)

- YPI and Our Faith – Love One Another
- Personal values
- Team selection / Team roles
- Research into Social Issues and Social Service Charities
- Charity selection



The YPI Process

Research, Visit, Present

goypi.org



YPI Launch

Students learn how the programme works through a year group assembly or class based introduction.



Form teams

In small teams, students identify the social needs of their local community.



Research

Teams research and analyse a number of local charities in their community.

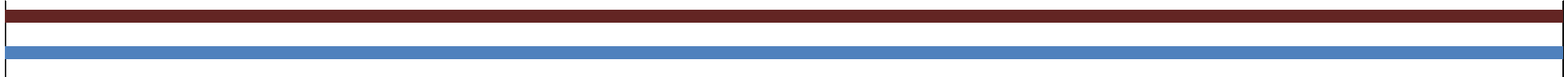


Choose a charity

Teams select the charity they believe best addresses their chosen issue.

PSHE (5 lessons)

- Contact Local Charity
- Collate research
- Prepare presentation



YPI in Saint Ninian's High School

Research, Visit, Present

goypi.org



YPI Launch

Students learn how the programme works through a year group assembly or class based introduction.



Form teams

In small teams, students identify the social needs of their local community.



Research

Teams research and analyse a number of local charities in their community.



Choose a charity

Teams select the charity they believe best addresses their chosen issue.



Presentations

Each team then prepares and delivers a presentation focused on their chosen charity, detailing what impact £3000 would have on the service they provide.



Charity Contact

Teams contact & visit their charity to gain a detailed understanding of what they do and how they operate.

Semi-Finals

- w/c 26th Nov
- 60 teams
- Panel of judges



YPI in Saint Ninian's High School

Research, Visit, Present

goypi.org



YPI Launch

Students learn how the programme works through a year group assembly or class based introduction.



Form teams

In small teams, students identify the social needs of their local community.



Research

Teams research and analyse a number of local charities in their community.



Choose a charity

Teams select the charity they believe best addresses their chosen issue.



YPI Finals

The most discerning teams then deliver their presentations & compete for the £3000 YPI Grant in front of a panel of judges at their YPI School Final.



Presentations

Each team then prepares and delivers a presentation focused on their chosen charity, detailing what impact £3000 would have on the service they provide.

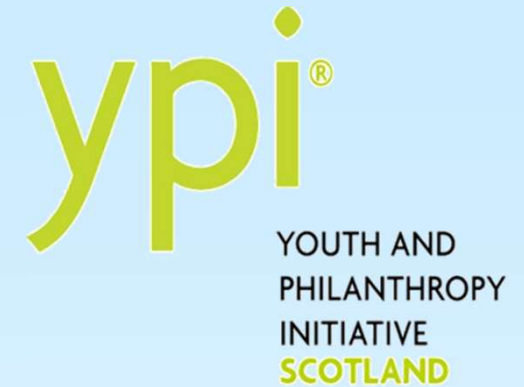


Charity Contact

Teams contact & visit their charity to gain a detailed understanding of what they do and how they operate.

YPI Final Event

- 7pm, Thursday 14th February
- 10 teams
- £3000 Grant awarded



2016-17 Winners



2017-18 Winners



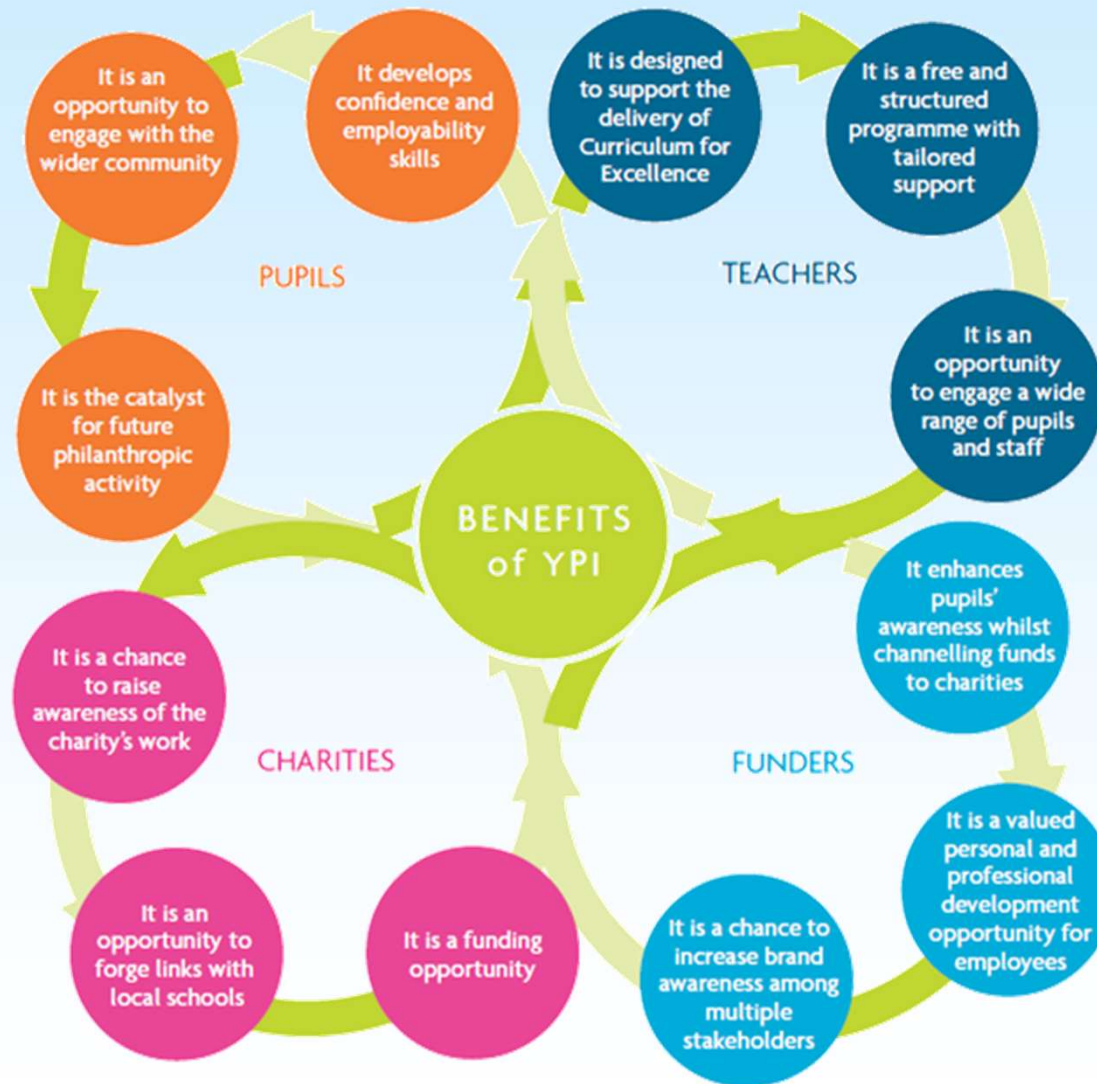
Aims of YPI



Pupils...

- develop a vast range of transferable skills for life, learning and work
- gain an understanding of philanthropy and their role in the community
- broaden their knowledge of our local community and the work of local charities
- learn how to study a charity's management, budget, strategy and staffing
- build relationships with representatives from their chosen charity
- develop research, team work, leadership, communication, presentation and public speaking skills
- are given the opportunity to share their creativity and passion through innovative and inspiring presentations
- raise awareness of the work of local charities in tackling issues which are important to them

Benefits of YPI



Progression

Possible Progression Pathway

	S2	S3/4		S5		S6
1.	English	English	→	English	→	English
2.	Maths	Maths	→	Maths		
3.	French	French	→	French	→	French
4.	History	History				History
5.	Physics	Physics	→	Physics		
6.	Comp	Comp				Computing
7.	Music	Music	→	Music		
8.	Chemistry	Chemistry				
				Vocational		Crash subject Vocational

Qualification Structure

O Grade	Standard Grade	National Qualifications	New National Qualifications
A	Credit 1	Int 2 A	National 5 A
B	Credit 2	Int 2 B	National 5 B
C	General 3	Int 2 C	National 5 C
	General 4	Int 1 A	National 4 Pass/Fail
Foundation 5	Foundation 6	Int 1 B	
		Int 1 C	
		Access 3	National 3
		Access 1/2	National 1/2

Progression

	S1/2	S3/4	S5	S6
Pupil A	CfE 3 rd /4 th level	National 5	Highers	Adv Highers Highers Vocational course
Pupil B	CfE 3 rd /4 th level	National 4/5	National 5 and Highers	Highers Vocational course Adv Highers
Pupil C	CfE 3 rd level	National 3/4	National 4/5	Higher National 5 Vocational course

Maisie Pollock S3

My experience of going from 2nd to 3rd year...

What is required of pupils to be a Successful Learner

Throughout Second Year

1. Use your diary every day
2. Check your timetable every evening and pack your school bag
3. Be organised and prepare thoroughly for all assessments
4. Use departmental timelines
5. Ensure all homework is completed to a high standard and meet all deadlines
6. Spend time every night revising what you have done that day and ask for support where needed
7. Consistently work hard in class and listen carefully at all times
8. Ensure we are on time for all classes



Find the correct balance between social life and school work



Performance in S4

- 96% of pupils achieved 5+ National 4 Awards
- National 5 Pass Rate 93%
- 82% of pupils achieved 5+ National 5 Awards
- 90 pupils (30%) achieved 8+ National 5 A Awards
- St Ninian's contributed 32% of pupils attaining 8+ Nat 5 A Awards

Workshops

- Workshops tonight will look at pupil responsibility and how as parents you can support your son/daughter
 - Course Content and progression
 - Resources provided
 - Timelines
 - Forms of assessment
 - Skills developed
 - Additional resources. (e.g. Glow, Websites etc.)

S2 Maths

- The S1-3 homework club runs on alternate Thursdays
- Revision materials are available for every Block Test on the Maths website
- Hand-in homework is issued once per topic in S2 and a parental signature is required
- Daily homework is issued and is noted in the homework diary
- Revising their notes jotter is not enough, pupils should attempt questions and use notes for advice
- Additional homework resource is available on Glow - pupils can use for further practice or when preparing for an assessment
- Maths teachers are available at break or lunchtime if pupils need help with homework tasks
- Follow the Maths Department on Twitter **@StNiniansMaths**

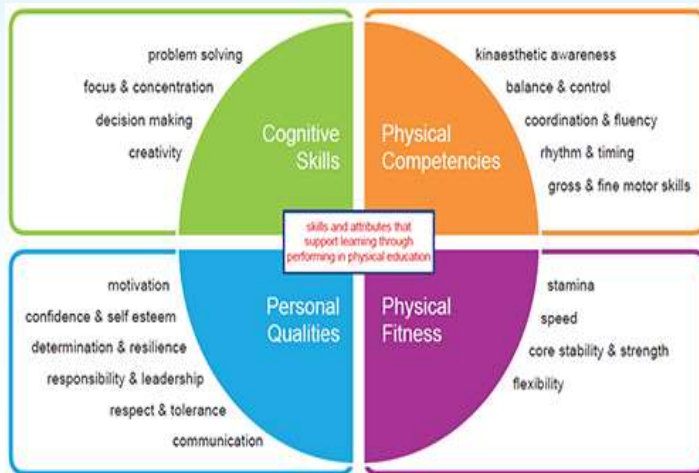
S2 English

- Clubs – Public Speaking, Film club, Newsletter club and Reading Champions
- support a good reading habit (access to books, time/space to read at home, positive example, discussions about reading etc)
- Close reading (Reading for Understanding, Analysis and Evaluation) is drawn from broadsheet feature articles – encourage your son/daughter to read some of these and perhaps discuss the content.
- At this stage, avoid excessive concerns about certification levels.
- Follow English Department Twitter feed **@stniniansEng**

Physical Education

Pupils in S2 are following Pathways PE. They are given 3 periods of PE per week.

Pupils are currently working through various activities, developing the Significant Aspects of Learning and their Health and Wellbeing



S2 PE Options

Pupils will be asked to consider their options for S3 Physical Education after Christmas.

Option 1 - Pathways PE

Developing Significant Aspects of Learning. This option will allow pupils to then choose S4 Sports Leadership.

Option 2 - National 5 Physical Education

Portfolio (50%)

2 One-Off Practical Performances (50%)

Option 3 - National 5 Dance (Dance Experience Essential)

Practical activity (45%)

Performance (35%)

Question Paper (20%)

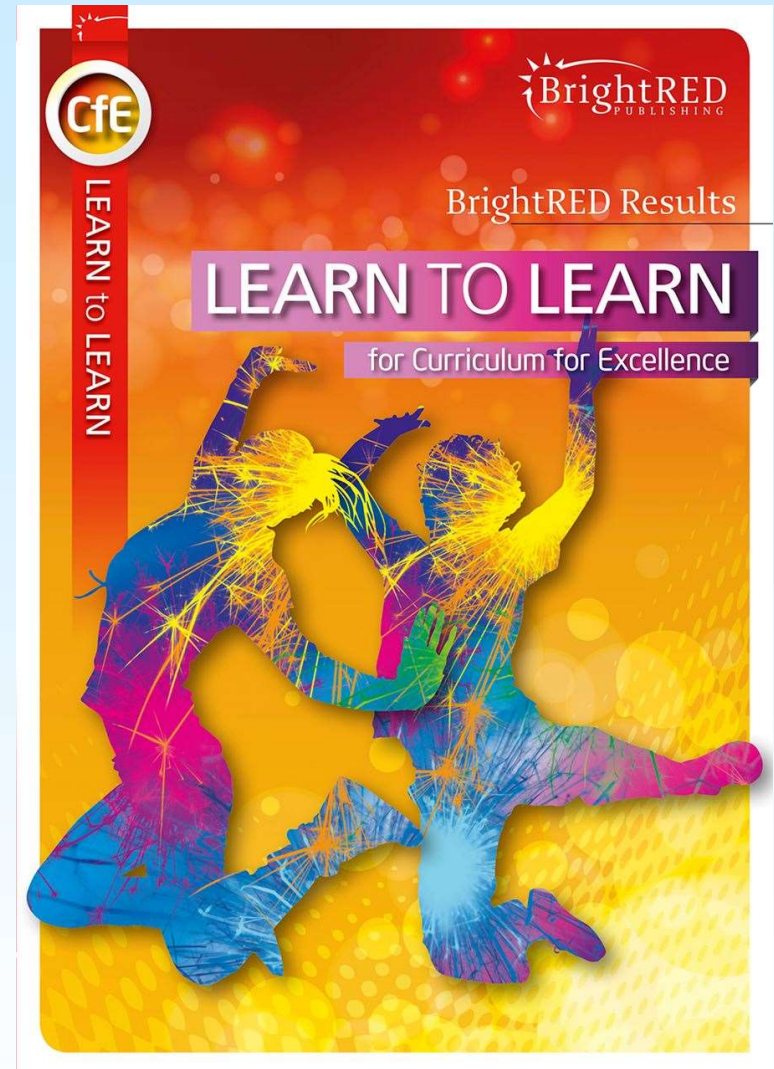
The PSHE Programme

- Support our young people in developing an understanding of their wellbeing with a view to improving wellbeing
- Progressive course from S1-6
- Covers materials that are relevant and age appropriate for each year group
- Timelines are flexible to allow for additional topics and speakers to be included if required to meet the needs of our students as the year progresses

All S2 pupils will receive the Learn to Learn study guide.

Designed to support students to develop effective study techniques

Please collect this from the tables in the Atrium where we will keep a register



Workshops

- Important that they run to time. (12 Mins)

7.30pm -7.45pm

7.45pm - 8.00pm

8.00pm - 8.15pm

8.15pm - 8.30pm

8.30pm - 8.45pm

- Notification bell will sound when it is time to move to the next workshop.

Subject	Room	Subject	Room
Modern Languages	Maths 1	Graphic Communication	Maths 9
Geography	Maths 2	Computing	Maths 10
History	Maths 3	Art & Design	English 1
Modern Studies	Maths 4	Music & Drama	English 2
Chemistry	Maths 5	Hospitality	English 10
Physics	Maths 6	Business Management	English 11 7.30pm - 7.45pm 7.45pm - 8.00pm 8.00pm - 8.15pm
Biology	Maths 7		
Design & Manufacture	Maths 8	Administration	English 11 8.15pm - 8.30pm 8.30pm - 8.45pm

Calendar of Events

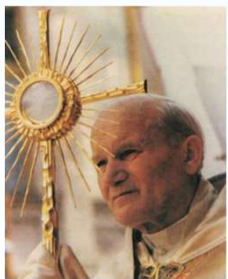
Tuesday 13 th November	S2 Ski Trip Information evening
Tuesday 20 th November	Service of Light 12.20pm (Oratory)
Friday 30 th November	Christmas Market
Thursday 6 th December	Advent service 4pm
Thursday 20 th December	Carol Service & Concert 7pm
Friday 21 st December	School Closes (2.30pm)
Friday 25 th January	S2 Interim Report 2
Thursday 14 th February	YPI Final
Thursday 21 st February	Careers evening
Friday 10 th May	S2 Full report
Thursday 30 th May	S2 Parents' evening



OUR FAITH



- Morning Mass
- Eucharistic Adoration and Rosary
- Venerable Margaret Sinclair Novena
- Tuesday, Thursday and Friday 8.25am
- Friday 12.20-1.00
- Monday 12.40



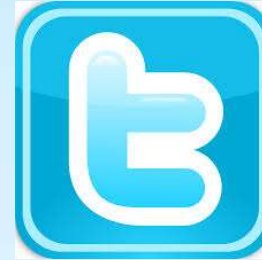
"The best, the surest and the most effective way of establishing everlasting peace on the face of the earth is through the great power of Perpetual Adoration of the Blessed Sacrament."

Blessed John Paul II

Keeping up to date...



<https://blogs.glowscotland.org.uk/er/StNinians/>



@stninianshigh



schoolmail@st-ninians.e-renfrew.sch.uk



@stninianshighschool

Your feedback is always greatly appreciated. Following the workshops, please complete the evaluation in the atrium where the chrome books will be set up.