

Mild Spelling Task - Follow the instructions on the Focus Resource sheet. Answers will be posted at 3pm. Have fun!

5

Focus Resource

Book 1



Name _____ Date _____

A Copy these letter patterns.

ain ain

ake ake

ay ay

B Make these words. Say them as you write them.

r + ain =

rain

tr + ain =

train

l + ake =

lake

fl + ake =

flake

l + ay =

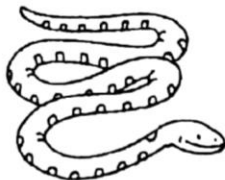
lay

pl + ay =

play

C Choose a word from the box to write under each picture.

clay snake pain tray



pain

snake

tray

clay

rain rake ray

Hot Spelling Task - Can you think of more words with the -le ending?
You could use a dictionary to help you. What happens when you add -ing
to root words that end in e? Happy word hunting!



Words to learn

ace
lace
age
page

Book 1 Unit 5 List A



Words to learn

ray
pray
prayer
rain
train
strain
strainer

Book 1 Unit 5 List B



Words to learn

saying
spraying
sailing
claiming
tracing
bracing
facing
spacing

Book 1 Unit 5 List C

You can self-assess this section and leave a comment for us
on see saw.

Extra Hot Spelling Task - Follow the instructions on the Extension Resource sheet. Answers will be posted at 3pm. Have fun!



Extension Resource

Book 1



Name _____ Date _____

A Sort the words in the box into their four spelling patterns.

snail stray game shave tame
wave name hay brave slave
pail pray same rail nail spray

Add one more word of your own to each list.

snail	stray	game	shave
pail	hay	tame	wave
rail	pray	name	brave
nail	spray	same	slave

B Sort these jumbled words.

- 1 *alim* a name for letters and parcels
- 2 *mlea* the opposite of 'female'
- 3 *mina* the most important
- 4 *mnea* lion's hair
- 5 *rsiae* to lift up
- 6 *yras* sunbeams

1. mail
2. male
3. main
4. mane
5. raise
6. rays

What do you notice about these words?