



WILLIAMWOOD HIGH SCHOOL



S5/6 option choices
2020/21



CONTENTS



General Information

10	Access to Primary Education / Childhood Practice – Higher (SCQF Level 6)
11	Accounting – Higher (SCQF Level 6)
12	Accounting – Higher National Certificate (SCQF Level 7)
13	Accountancy – Foundation Apprenticeship (SCQF Level 6)
14	Art and Design – National 5 (SCQF Level 5)
15	Art and Design – Higher (SCQF Level 6)
16	Art and Design (Enquiry: Design) – Advanced Higher (SCQF Level 7)
17	Art and Design (Enquiry: Expressive) – Advanced Higher (SCQF Level 7)
18	Automotive Skills – Greenpower – Skills for Work 4 (SCQF Level 4)
19	Barbering – City & Guilds Level 2 (SCQF Level 5)
20	Beauty and Complementary Therapy Skills – National Progression Award – (SCQF Level 4)
21	Biology – Higher (SCQF Level 6)
22	Biology – Advanced Higher (SCQF Level 7)
23	Building Services Engineering – National Progression Award (SCQF Level 5)

24	Building Services Engineering – National Certificate (SCQF Level 6)
25	Building Services Engineering – Higher National Certificate (SCQF Level 7)
26	Business – Higher National Certificate (SCQF Level 7/8)
27	Business and Marketing – National Progression Award (SCQF Level 5)
28	Business Management – Higher (SCQF Level 6)
29	Business Skills – Foundation Apprenticeship (SCQF Level 6)
30	Chemistry – National 5 (SCQF Level 5)
31	Chemistry – Higher (SCQF Level 6)
32	Chemistry – Advanced Higher (SCQF Level 7)
33	Civil Engineering – Foundation Apprenticeship (SCQF Level 6)
34	Computer Games Development – National Progression Award (SCQF Level 5)
35	Computing Science – Higher (SCQF Level 6)
36	Construction Crafts – Pre Apprenticeship (SCQF Level 4/5)
37	Construction Management – Higher National Certificate (SCQF Level 7)
38	Construction Pathways – (SCQF Level 4)

CONTENTS

39	Construction Skills – Carpentry and Joinery City & Guilds (SCQF Level 4)	62	French – Higher (SCQF Level 6)
40	Construction Skills – Certificate Scheme CSCS (SCQF Level 4)	62	French – Advanced Higher (SCQF Level 7)
41	Construction Skills – (SCQF Level 4)	63	Geography – National 5 (SCQF Level 5)
42	Creative & Digital Media – (SCQF Level 6)	63	Geography – Higher (SCQF Level 6)
43	Cyber Security – National Progression Award (Level 6)	64	Geography – Advanced Higher (SCQF Level 7)
44	Data Science – National Progression Award (SCQF Level 6)	65	Graphic Communication – National 5 (SCQF Level 5)
45	Design and Manufacture – National 5 (SCQF Level 5)	65	Graphic Communication – Higher (SCQF 6)
46	Design and Manufacture – Higher (SCQF Level 6)	66	Graphic Communication – Advanced Higher (SCQF Level 7)
47	Design and Manufacture – Advanced Higher (SCQF Level 7)	67	Grow, Cook And Eat – National 1 (SCQF Level 1)
48	Digital Future Homes – (SCQF Level 4)	68	Hair, Beauty And Make-Up – National 5 (SCQF Level 5)
49	Drama – Higher (SCQF Level 6)	69	Hairdressing – Skills for Work 4 (SCQF Level 4)
50	Drama – Advanced Higher (SCQF Level 7)	70	Health Sector – Skills for Work National 5
51	Early Education And Childcare – Skills for Work 4 (SCQF Level 4)	71	History – National 5 (SCQF Level 5)
52	Early Education And Childcare – Skills for Work 5 (SCQF Level 5)	71	History – Higher (SCQF Level 6)
53	Engineering Systems – Foundation Apprenticeship (SCQF Level 6)	72	History – Advanced Higher (SCQF Level 7)
54	English – National 4 (SCQF Level 4)	73	Horticulture – National Progression Award (SCQF Level 4)
54	English – National 5 (SCQF Level 5)	74	Human Body Structure & Function – University Level 2 (SCQF Level 8)
55	English – Higher (SCQF Level 6)	75	Human Resources & Law – National Progression Award (SCQF Level 6)
56	English – Advanced Higher (SCQF Level 7)	76	Human Resource and Management – Higher National Certificate (SCQF Level 7)
57	Events – National Progression Award (SQF Level 6)	77	ICT Hardware Systems Support – Foundation Apprenticeship (SCQF Level 6)
58	Fashion and Textile Technology – Higher (SCQF Level 6)	78	ICT Software Development – Foundation Apprenticeship (SCQF Level 6)
59	Fashion Brand Retailing – University Level 1 (SCQF Level 7)	79	Inspire Your Future – (SCQF Level 5)
60	Financial Services – Foundation Apprenticeship (SCQF Level 6)	80	Introduction to Barista Skills – (SCQF Level 5)
61	Food and Drink Technologies – Foundation Apprenticeship (SCQF Level 6)	81	Introduction to Fashion Design and Production – (SCQF Level 4)
		82	Introduction to Food Service Skills – (SCQF Level 3/4)
		83	Introduction to Nursing – (SCQF level 5)
		84	Introduction to Teacher Education

CONTENTS

85	Legal Services – National Progression Award (Level 6)	110	Professional Cookery – National Progression Award (SCQF Level 4)
86	Mandarin – National 4/5 (SCQF Level 4/5)	111	Professional Theatre Preparation – National Progression Award (SCQF Level 6)
87	Maritime Skills – Skills for Work (SCQF Level 5)	112	Psychology – Higher (SCQF Level 6)
88	Mathematics – National 5 (SCQF Level 5)	113	Quantity Surveying – Higher National Certificate (SCQF Level 7)
89	Mathematics – Higher (SCQF Level 6)	114	REHIS Elementary Cooking Skills
89	Mathematics – Advanced Higher (SCQF Level 7)	115	RMPS – Higher (SCQF Level 6)
90	Mechanical Engineering – Foundation Apprenticeship – SCQF level 6	116	RMPS – Advanced Higher (SCQF Level 7)
91	Mechanical Engineering – Higher National Certificate (SCQF Level 7)	117	Scientific Technologies (Laboratory Skills) – Foundation apprenticeship – (SCQF Level 6)
92	Modern Studies – National 5 (SCQF Level 5)	118	Scientific Technologies (Laboratory Skills) – National progression Award (SCQF Level 6)
92	Modern Studies – Higher (SCQF Level 6)	119	Shoestrung Cookery
93	Modern Studies – Advanced Higher (SCQF Level 7)	120	Social Services and Healthcare Foundation Apprenticeship – (SCQF Level 6)
94	Music – National 5 (SCQF Level 5)	121	Social Services Children and Young people – Foundation Apprenticeship (SCQF Level 6)
94	Music – Higher (SCQF Level 6)	122	Sound Production – National Progression Award (SCQF Level 6)
95	Music – Advanced Higher (SCQF Level 7)	123	Spanish – National 5 (SCQF Level 5)
96	Painting and Decorating – National Progression Award (SCQF Level 5)	123	Spanish – Higher (SCQF Level 6)
97	Personal and Social Development Transitions - (SCQF Level 3/4)	124	Spanish – Advanced Higher (SCQF Level 7)
98	Philosophy – Higher (SCQF Level 6)	125	Sports Leader – (SCQF Level 4)
99	Photography – Higher (SCQF Level 6)	126	Sport & Recreation – Skills for Work (SCQF Level 5)
100	Physical Education – Higher (SCQF Level 6)	127	Television Production – National Progression Award (SCQF Level 5)
101	Physical Education – Advanced Higher (SCQF Level 7)	128	Uniformed and Armed Services – Skills for Work (SCQF Level 4)
102	Physics – National 5 (SCQF Level 5)	129	Up in the Air and on the Ground – SCQF Level 4/5
102	Physics – Higher (SCQF Level 6)	130	Youth Work – National Progression Award (SCQF Level 6)
103	Physics – Advanced Higher (SCQF Level 7)		
104	Police Studies – Higher National Certificate (SCQF Level 7/8)		
105	Politics – Higher (SCQF Level 6)		
106	Pool Lifeguarding – IQL Level 2 (SCQF Level 5)		
107	Practical Cake Craft – National 5 (SCQF Level 5)		
108	Practical Cookery – National 5 (SCQF Level 5)		
109	Practical Woodworking – National 5 (SCQF Level 5)		

S5/S6 COURSE CHOICE

Making the right course choices in S5 and S6 is a very important part of your educational development. The choices that you make at these times are crucial to your educational future and your possible career thereafter. It is vitally important, therefore, that you take the option choice process seriously and that you give it your full attention and commitment.

It is important that your course choices are based on full and accurate information. This document is a starting point and contains details of each of the courses on offer. You should read it carefully. You should also discuss your course choices with your family and friends as this will give you every opportunity to think through your decisions.

You will, of course, receive advice and support from staff in the school. You will have a formal options interview with your pupil support teacher; however, by this point you should more or less know what subjects you are planning to take. If you are unsure, you should speak to your pupil support teacher and/or your subject teachers prior to your options interview. In addition to this, you can request a careers appointment through your pupil support teacher. It is essential that those of you who are considering further study at college or university check carefully which subjects are essential for your preferred courses. You will find this information by checking the prospectus or website of the college or university concerned. Again, speak to your pupil support teacher if you need help.

The forthcoming course choices are vitally important to your future. Think carefully before you make any decisions and remember to seek advice if you are unsure.

Mr S Hannah
Depute Headteacher S4

Mrs K Sinclair
Depute Headteacher S5



IMPORTANT DATES FOR YOUR PLANNER:

- **Wednesday 8th January 2020 – S6 Options Information Evening**
- **S6 Options begin Monday 13th January – forms must be returned no later than Friday 24th January**
- **Thursday 27th February – S5 Options Information Evening**
- **S5 options start on Monday 2nd March – forms must be returned no later than Friday 20th March**

S5/S6 COURSE CHOICE

This is an important stage in secondary school. At the end of fourth year, you are faced with a number of possible choices:

- Stay on for a fifth year

OR

- Stay on until Christmas of fifth year if you have not reached school leaving age by the end of fourth year*

OR

- Take up full-time employment/training

OR

- Apply for a college course – Further Education

If you are considering leaving school, it is crucial that you have an interview with the Careers Officer. You should also be discussing your plans with your pupil support teacher and using the internet to research career areas.

A useful website is www.myworldofwork.co.uk

The Careers Library within the school also contains information on careers, modern apprenticeships and other relevant pathways.

If your choice is to continue at school, you should still be making use of the Careers Library to help you select appropriate subjects to study next year.

All students entering fifth year must:

- a) Choose English at the appropriate level;
- b) Choose four other subjects that they are currently studying in S4 at the appropriate next level;
- c) Have a full 33 period timetable.

*Official school leaving dates are as follows:

You may leave at the end of May 2020 if you will reach the age of sixteen on or before 30th September 2020.

You may leave at Christmas if you will reach the age of sixteen between 1st October 2020 and 28th February 2021.

CHOOSING SUBJECTS

When you were choosing your subjects at the end of second year, you were advised to keep a balanced set of subjects and not to cut out any subjects which might be important later on. This time, you should be thinking more selectively about which subjects to take.

You should take the following factors into account:

- Choose subjects that are essential for your chosen career area / university or college course
- Choose the subjects that you are most likely to pass at the next level and at the highest grade
- Choose subjects that you enjoy
- Keep a balanced range of subjects if you are still unsure of a career area

The correct choice of subject is vitally important. In S4 you studied eight or nine subjects, whereas in S5 you will be studying 5 subjects.

You must choose a sensible set of subjects, especially if you intend to go on to Higher or Further Education. To ensure progression you must choose the correct LEVEL to study in each subject. The 5 subjects will be chosen from the eight or nine subjects that you are currently studying. (NB this can include PE and RMPS).

You should by now have some idea of the kind of Higher Education, Further Education, training course or career for which you are aiming and you should be aware of any subjects that you require to study in order to achieve that aim. It may be difficult for students to decide which other subjects to choose. You should speak to your class teachers, Pupil Support teacher and your parents who can all advise you of your realistic prospects in your proposed course.

If you are considering applying to university, particularly for courses such as Medicine, Veterinary Medicine, Dentistry, Physiotherapy and Pharmacy you are advised to consult the university website and/or telephone the admissions officer, as the entrance requirements can change from year to year.

S5/S6 COURSE CHOICE

At the end of fifth year, you are faced with a number of possible choices:

- Stay on for a sixth year
- Apply to Higher Education
- Apply to Further Education (you should be applying for this now)
- Take up full-time employment/training

If you are considering leaving school, it is crucial that you have An Interview with the Careers Officer. You should also be discussing your plans with your pupil support teacher and using the internet to research career areas.

A useful website is www.planitplus.net. It is your future – ensure you make a sensible and informed choice.

All students entering sixth year:

- a) should choose at least 4 subject options;
- b) have the opportunity to take judiciously chosen “crash” subjects;
- c) can attend work experience placements as part of their timetable;
- d) can attend additional college placements;
- e) can volunteer as a Peer Tutor.

In sixth year, students are expected to take greater responsibility.

For their learning and use their non-class time profitably.

Making the best use of this time can be quite complex and involves careful advance planning and disciplined working.

If you find this difficult, ask your pupil support teacher for help.

HIGHER EDUCATION

Universities are keen to encourage applicants to pursue their studies to a more advanced level in Sixth Year. Students who meet or exceed the minimum university entrance requirements after Fifth Year are recommended to study at least one (and preferably more) subject at Advanced Higher level.

However, it is not always advisable for students who have not met the minimum university entrance requirements to take Advanced Highers. The universities will continue to look for breadth of study across four or more subjects; it is, therefore, vital to select more Highers in these circumstances. For example, if a course has a minimum entrance requirement of BBBB and a student achieves AACC or BBCC at Higher, taking two Advanced Highers in the subjects in which the As or Bs have been gained will not help the applicant reach the minimum requirement.

Pupils should instead concentrate on improving their qualifications across the broad range of subjects, as opposed to specialising in the areas in which they have already performed well.

Students should note that for certain courses, such as Veterinary Medicine, Advanced Highers are compulsory. Please consult the appropriate university website for more information.



"CRASH SUBJECTS"

Only students in S6 can take a "crash" Higher - i.e. in a subject that they have not previously studied to National 5 level. Advice should be sought from the relevant subject principal teacher and also from your pupil support teacher as this is not an easy option. Similarly, students may choose to "crash" at National 5 level.

CAREER CHOICE

Students planning to take up full-time employment or training after sixth year should take advice from their pupil support teacher and from the Careers Officer on appropriate subject choice. There are a variety of vocational options within the vocational programme which may be of relevance and interest. Students can take a combination of school based courses and college based courses.

PUPIL SUPPORT

Your Pupil Support teacher will be able to advise you about the balance of subjects you are considering, and their appropriateness in the light of your progress over the past few years and in the context of any career interests you may already have.

SUBJECT TEACHER

Your current S5 teachers will be able to tell you whether you have a realistic chance of success if you take that subject to a more advanced level. Ask them!

If you are thinking of starting a new subject or "crash" subject, be sure that you really understand what will be involved – how much practical work, how much written work, how much homework, what work you might need to catch up in your own time – the best person to ask is the principal teacher of that department.

CAREERS INTERVIEW

Any pupil in the school can request an appointment with the Careers Officer at any time. A self-referral system is in operation – please speak to your pupil support teacher if you wish to request an interview.

VOCATIONAL PROGRAMME

East Renfrewshire Council and Williamwood High School have developed a very successful vocational programme providing young people with the opportunity to achieve qualifications and a progression route that fits them best, and that will serve their interests, talents and ambition.

Pupils interested in college based options should see their pupil support teachers to find out more about the college-based options. This will not commit pupils to a course but will give them, and their parents, the opportunity to consider the courses available so they may make a relevant and appropriate choice.

On the school option form there is a box to tick if pupils are interested in work-related courses. Pupils who tick this box will be given the opportunity to find out more about the specific courses on offer as further details become available. In the meantime, you may wish to contact Miss Kirsty Milne (Principal Teacher of Pupil Support) who will be happy to discuss the vocational programme with you and answer any questions you may have.

FOUNDATION APPRENTICESHIP

Foundation Apprenticeships are a work-based learning opportunity for high school pupils in S5 Pupils for 2 Year Model /S6 for Shorter Duration Delivery Model. Pupils will spend time out of school at college or with a local employer, and complete the Foundation Apprenticeship alongside their other subjects.

The qualification has two delivery models, the two year delivery model and the shorter duration delivery model (one academic year) and is linked to one of six key sectors of the Scottish economy, so young people are getting industry experience which will help them kick-start a successful career in their chosen field.

Please note: this option will be considered 2 of your S6 subjects and you will travel independently by bus or train – travel tickets should be kept as you will be reimbursed.

Pupils interested in Foundation Apprenticeships can obtain more information from their pupil support teacher.

You may wish to source a work placement yourself. This would need to be health and safety checked by Gateway Service.

ACCESS TO PRIMARY EDUCATION // CHILDHOOD PRACTICE

South Lanarkshire College (SCQF LEVEL 6)

COURSE OUTLINE

The Access to Primary Education and Childhood Practice will prepare you for working with children from pre-birth to 16. South Lanarkshire College will offer you the opportunity to develop an understanding of child development. The course explains the roles and responsibilities of practitioners, other professionals, and parent and carers in meeting the needs of children. You will participate in a range of tasks, including evaluating and analysing theories that inform current childhood practice will be put into practice during the half day in practical placement. This placement will involve working with children in either a Primary or Nursery setting.

ATTENDANCE PATTERN

Monday, Tuesday, Wednesday (1.30pm to 4pm) and Thursday all day (9.30am to 4pm).

Please note, that unlike other options, this option is continuous attendance from August to June and may impact on other subjects attendance.

PUPIL ELIGIBILITY

You must:

- have National 5 English
- have National 5 Mathematics
- achieved or working towards Higher English (A-C) by end of S6

Valuable resources available in school and online include:

- World of Work at www.myworldofwork.co.uk
- Planit at www.planitplus.net
- Workit at www.workit.info



QUALIFICATION BREAKDOWN

Childcare and Development – SCQF Level 6

- Child Development
- Child Development: Theory
- Services for Children and Young People
- Play experience
- Safeguarding
- Communicating with Children and Young People
- Paediatric First Aid: college certificate

Please note: all candidates are required to be vetted by Disclosure Scotland as part of the Protecting Vulnerable Groups Scheme (PVG Scheme).

WHAT OPPORTUNITIES WILL BE AVAILABLE TO ME WHEN I FINISH?

You might go on to do: HNC Childhood Practice / University BA Primary Teaching degree programme. The level you might enter would depend on the level and relevance of your other qualifications

ACCOUNTING

Williamwood High School
HIGHER (SCQF LEVEL 6)
Open to S6 Pupils

Valuable resources available in school and online include:

- World of Work at www.myworldofwork.co.uk
- Planit at www.planitplus.net
- Workit at www.workit.info



COURSE OUTLINE

The aim of the Higher Accounting course is to help you to understand and use financial information. You will learn to prepare accounting statements as well as analyse, interpret and report on a company's financial performance. The skills you will develop in this course include numeracy and logical reasoning. The course combines practical and theoretical aspects of learning related to accounting, and will allow you to use IT for some tasks.

PUPIL ELIGIBILITY

You must have passed, or be studying towards:

- Higher Mathematics. However, other related Higher subjects may be considered.

QUALIFICATION BREAKDOWN

Accounting SCQF Level 6:

- Financial Accounting
- Management Accounting

WHAT OPPORTUNITIES WILL BE AVAILABLE TO ME WHEN I FINISH?

You might go on to do:

- Other National Qualifications, National Certificates, Higher National Certificates, Higher National Diplomas and degrees in accountancy or other business related subjects. The level you might enter would depend on the level and relevance of your other qualifications.
- Employment and/or training in an accounting related industry



ACCOUNTING

ACCOUNTING WEST COLLEGE SCOTLAND - PAISLEY CAMPUS SCQF LEVEL 7

COURSE OUTLINE

The aim of the Higher National Certificate Accounting is to provide you with the opportunity to develop a high level of competence in financial and management accounting as well as IT skills. You will learn to understand, use financial information, prepare accounting statements as well as analyse, interpret and report on a company's financial performance. The skills you will develop in this course include numeracy and logical reasoning. The course combines practical and theoretical aspects of learning related to accounting. Accounting relates to many aspects of everyday life, and therefore will provide you with experiences which are topical and will develop skills for learning, life and work. You will learn to think logically and to apply accounting principles, thereby supporting your personal financial awareness.

ATTENDANCE PATTERN

Tuesday, Wednesday, Thursday and Friday (1pm to 4pm)
Please note, that unlike other options, this option is continuous attendance from August to June and may impact on other subjects attendance.

PUPIL ELIGIBILITY

You must have:

- 1 Higher at A or B level
- 5 passes at National 5, which should include Maths and English (minimum grade of 3 A's & 2 B's)

Valuable resources available in school and online include:

- World of Work at www.myworldofwork.co.uk
- Planit at www.planitplus.net
- Workit at www.workit.info



QUALIFICATION BREAKDOWN

Higher National Certificate in Accounting –SCQF Level: 7

Mandatory Units:

- Recording Financial Information
- Preparing Financial Statements
- Using Financial Accounting Software
- Cost Accounting
- Management Accounting Using Information Technology
- Accounting: Group Award Graded Unit

You will study optional units to be discussed with the lecturer once course commences, such as:

- Business Law: Introduction
- Economics Issues: Introduction
- IT in Business: Spreadsheets
- Payroll
- Business Communication
- Personal Development Planning

WHAT OPPORTUNITIES WILL BE AVAILABLE TO ME WHEN I FINISH?

You might go on to do:

- A full time higher education course, such as a Higher National Diploma (HND) or degree. The level you might enter would depend on the level and relevance of your other qualifications
- Employment

ACCOUNTANCY

**City of Glasgow College, Glasgow Kelvin College
in partnership with People Plus or West
College Scotland
Foundation Apprenticeship (SCQF Level 6)
Open to S5 Pupils for 2 Year Model /
S6 for 1 Year Model**

COURSE OUTLINE

The aim of the Foundation Apprenticeship Accounting course is to help you understand and use financial information. You will learn to record financial accounting information (and bookkeeping), prepare financial information, indirect tax, analysing accounting information, management accounting and professional ethics for accountants.

ATTENDANCE PATTERN

2 Year Model – City of Glasgow:

Year 1: Tuesday and Thursday (pm) and 1 week in June (Mon - Fri 9.30am - 4.00pm)

Year 2 proposed attendance: Thursday all day shared between college and work experience placement. 1 week in June (Mon - Fri 9.30am - 4.00pm)

1 Year Model - Glasgow Kelvin College in partnership with People Plus

Tuesday and Thursday all day shared between college and work experience placement. 1 week in June (Mon - Fri 9.30am - 4.00pm). Please note, in addition to the above attendance, you will be required to study remotely as per guidance from the training provider.

1 Year Model – West College Scotland:

Monday, Tuesday, Wednesday and Thursday (1.30pm to 4pm) from August to November

2 afternoons at college (Monday, Tuesday or Wednesday 1.30pm to 4.00pm) and a full day work placement from November to June.

Please note: this option may be considered 2 of your S6 subjects and you will travel independently by bus or train – travel tickets should be kept as you will be reimbursed.

Valuable resources available in school and online include:

- World of Work at www.myworldofwork.co.uk
- Planit at www.planitplus.net
- Workit at www.workit.info



PUPIL ELIGIBILITY

City of Glasgow – 2 Year Model

Pupils intending to leave school at the end of S6 with minimum of 1 or more Highers incl. English and Nat 5's. Essential criteria as follows:

- Achieved or working towards Higher English, Maths or Business by the end of S6

Glasgow Kelvin College in partnership with People Plus – 1 Year Model

Pupils intending to leave school at the end of S6 with minimum of 1 or more Highers incl. English and Nat 5's. Essential criteria as follows:

- Achieved National 5 (A-C) in English, Maths, Business by the end of S5
- Achieved or working towards Higher English (A-C) by end of S6

QUALIFICATION BREAKDOWN

Foundation Apprenticeship in Accountancy – GN7T-46

National Progression Award (NPA) in Accountancy

- Preparing Management Accounting Information
- Analysing Account Information
- Preparing Financial Accounting Information
- Recording Data in the Ledger
- Professional ethics for Accountants
- Work Placement

AAT (Association of Accounting Technicians) Advanced Diploma in Accounting (part of)

- Advanced Bookkeeping
- Final Accounts Preparation
- Indirect Tax

A Foundation Apprenticeship is a work based learning apprenticeship, where you are expected to attend work placements including work shadowing, industry talks, industry visits and work related training.

WHAT OPPORTUNITIES WILL BE AVAILABLE TO ME WHEN I FINISH?

You might go on to do:

- Modern Apprenticeship
- Employment
- A full time higher education course, such as a Higher National Certificate (HNC), Higher National Diploma (HND) or degree. The level you might enter would depend on the level and relevance of your other qualifications

ART AND DESIGN

Williamwood High School National 5 (SCQF Level 5)

COURSE OUTLINE

The National 5 Art and Design course provides learners with a broad, practical experience of art and design skills and related Art and Design Studies. National 4 and National 5 (N4, N5) share a common course; the level of presentation is based on the quality of practical work produced.

National 5 candidates sit a written exam. The National 5 course is divided into three components, Expressive, Design and Art and Design Studies.

Expressive and Design are folio based areas and the Art and design studies comprises of a written examination.

PUPIL ELIGIBILITY

You must have:

- National 4 Art & Design or general work as covered in S3 Art and Design course

QUALIFICATION BREAKDOWN

Art & Design National 5 SCQF Level 5:

- Art and Design: Expressive Activity
- Art and Design: Design Activity
- Art and Design Studies

COURSE FOLIO

Expressive Activity Portfolio

You will draw on, extend and apply the skills you have learned during the production of research and initial development. This area of the course enables you to plan, develop, produce and present art work which demonstrates creativity and the application of practical skills. Through the development of observational drawing and painting skills you will explore methods to visually represent the world you live in and communicate your thoughts, ideas and opinions.

Valuable resources available in school and online include:

- World of Work at www.myworldofwork.co.uk
- Planit at www.planitplus.net
- Workit at www.workit.info



In the portfolio you will produce the single object drawings and colourstudy, a variety of compositional studies and an A2 Art work.

Design Activity Portfolio

You will draw on, extend and apply the skills you have learned during the production of research and initial development. This area of the course enables you to plan, develop, produce and present design work which demonstrates creativity and the application of practical design skills. Using creativity, problem solving and critical thinking skills, you will resolve design issues by producing a functional design resolution.

Through further development you will produce a variety of design drawings, samples and models. A final design resolution is produced and photographed.

Both portfolios of work will be presented on an A1 board which is submitted to the SQA for external assessment.

Art and Design Studies - Written Work

By investigating the work of artists and designers, you will develop a critical understanding of a range of art and design practice, enabling you to understand the impact of social and cultural influences on the work of artists and designers.

WHAT OPPORTUNITIES WILL BE AVAILABLE TO ME WHEN I FINISH?

You might go on to do:

- Higher Art and Design
 - Other National Qualifications, National Certificates, Higher National Certificates, Higher National Diplomas and degrees Art and Design
 - Employment (including SVQs)
- your other qualifications.
- Employment and/or training in an accounting related industry

ART AND DESIGN

Williamwood High School Higher (SCQF Level 6)

COURSE OUTLINE

The Higher Art and Design course provides learners with a broad, practical experience of art and design skills and related Art and Design Studies. The Higher course is divided into three components, Expressive, Design and Art and Design Studies. Expressive and Design are folio based and the art and design studies comprises of written examination.

PUPIL ELIGIBILITY

You must have:

- National 5 Art & Design

QUALIFICATION BREAKDOWN

Higher Art & Design SCQF Level 6:

- Art and Design: Expressive Activity
- Art and Design: Design Activity
- Art and Design: Studies

COURSE FOLIO

Expressive Activity Portfolio

You will draw on, extend and apply the skills you have learned during the production of research and initial development. This area of the course enables you to plan, develop, produce and present art work which demonstrates creativity and the application of practical skills. Through further development of observational drawing and painting skills you will explore methods to visually represent the world you live in and communicate your thoughts, ideas and opinions.

In the portfolio you will produce three single object drawings and colour studies, a variety of compositional studies and an A2 painting.

Valuable resources available in school and online include:

- World of Work at www.myworldofwork.co.uk
- Planit at www.planitplus.net
- Workit at www.workit.info



Design Activity Portfolio

You will draw on, extend and apply the skills they have learned during the production of research and initial development. This area of the course enables you to plan, develop, produce and present design work which demonstrates creativity and the application of practical design skills. Using creativity, problem solving and critical thinking skills, you will resolve design issues and constraints by producing a functional design resolution.

Through further development you will produce a variety of design drawings, samples and models. A final design resolution is produced and photographed.

Both portfolios of work will be presented on an A1 board which is submitted to the SQA for external assessment.

Art and Design Studies - Written Work

By investigating the work of artists and designers, you will develop a critical understanding of a range of art and design practice, enabling you to understand the impact of social and cultural influences on the work of artists and designers.

WHAT OPPORTUNITIES WILL BE AVAILABLE TO ME WHEN I FINISH?

You might go on to do:

- Advanced Higher Art and Design, National Qualifications, National Certificates, Higher National Certificates, Higher National Diplomas and degrees Art and Design
- Employment (including SVQs)

ART AND DESIGN (ENQUIRY DESIGN)

Williamwood High School Advanced Higher (SCQF Level 7)

COURSE OUTLINE

The Advanced Higher in Design offers you a programme of study which aims to equip you with diversity of thought, freedom of experimentation and play, and the ability to use your imagination to present and develop new Design ideas. Introducing you to the necessary skills, which will allow you to develop your expertise and realise your full creative design potential.

PUPIL ELIGIBILITY

You must have:

- Higher Art and Design

QUALIFICATION BREAKDOWN

**Art & Design Enquiry: Design Advanced Higher
SCQF Level 7:**

- Art and Design (Design): Design Enquiry
- Art and Design (Design): Design Studies

DESIGN ENQUIRY

The portfolio provides evidence of your ability to further develop and resolve your chosen design idea(s). This design work should be clearly based on your selected initial idea(s) and informed by the design brief. It should include evidence of sustained development of their design idea(s) and one or more finished design solution(s). The portfolio will be produced over an extended period of time. This allows you the opportunity to develop, reflect on and refine your work before it is presented for external assessment/marking. The completed portfolio is worth 60%, the evaluation is worth 10% and the Design Studies is worth 30%. There is no written exam at this level.

Valuable resources available in school and online include:

- World of Work at www.myworldofwork.co.uk
- Planit at www.planitplus.net
- Workit at www.workit.info



DESIGN STUDIES

Writing a dissertation with a maximum of 2000 words you will investigate the work of designers, developing a critical understanding of a range of art and design practice, enabling you to understand the impact of social and cultural influences on the work of designers.

WHAT OPPORTUNITIES WILL BE AVAILABLE TO ME WHEN I FINISH?

You might go on to do:

- BA Honours Degree in Art and Design
- Other National Qualifications
- Employment (including SVQ's)



ART AND DESIGN (ENQUIRY EXPRESSIVE)

Williamwood High School Advanced Higher (SCQF Level 7)

COURSE OUTLINE

The Advanced Higher in Art and Design (Expressive): Expressive Enquiry will give you the opportunity to show that you can plan and carry out a personal art enquiry. You will select expressive stimuli and produce initial investigative drawings and studies before developing and refining developmental ideas for art work for the enquiry. You will also analyse your creative choices and decisions and independently evaluate your art work. You will learn to find unexpected patterns, by making connections sometimes between quite unrelated things.

You will show that you can research and investigate an art area of personal interest. You will plan the investigation, analysing examples of art work and practice within a chosen area of art. You will express substantiated personal judgements about art work and the contexts which influenced your work.

PUPIL ELIGIBILITY

You must have:

- Higher Art and Design

QUALIFICATION BREAKDOWN

Advance Higher Art and Design (Enquiry: Expressive)
SCQF Level 7:

- Art and Design (Design): Expressive Enquiry
- Art and Design (Design): Expressive Studies

Valuable resources available in school and online include:

- World of Work at www.myworldofwork.co.uk
- Planit at www.planitplus.net
- Workit at www.workit.info



EXPRESSIVE ENQUIRY

The portfolio is to assess your ability to integrate and apply practical art skills and in-depth knowledge and understanding of expressive art practice across the Course. You will select one or more examples of your earlier expressive investigative and development work from your unit. You will use this as a basis for developing and producing pieces of highly resolved expressive art work. The portfolio will be produced over an extended period of time. This allows you the opportunity to develop, reflect on and refine your work before it is presented for external assessment/ marking. The completed portfolios worth 60%, the evaluation is worth 10% and the design Studies is worth 30%. There is no written exam at this level.

EXPRESSIVE STUDIES

Writing a dissertation with a maximum of 2000 words you will investigate the work of artists, developing a critical understanding of a range of art and design practice, enabling you to understand the impact of social and cultural influences on the work of artists.

WHAT OPPORTUNITIES WILL BE AVAILABLE TO ME WHEN I FINISH?

You might go on to do:

- A degree in Art and Design or a related field
- Other National Qualifications
- Employment (including SVQ's)
- Produce an electronic portfolio

AUTOMOTIVE SKILLS GREENPOWER

West College Scotland Skills for Work 4 (SCQF Level 4)

COURSE OUTLINE

The Skills for Work Award in Automotive Skills will give you an opportunity to develop basic practical skills necessary to work in the automotive industry. You will gain experience of carrying out basic vehicle checks, including the specific skills involved in removal and replacement of components and mechanisms of a vehicle. You're going to get dirty and it's going to be physical! Relevant jobs such as light and heavy vehicle maintenance, motorcycle maintenance, vehicle fitting, auto electrical, accident repair –body and paint operations, parts distribution and roadside assistance. You will gain an overview and an awareness of the skills required by employers within this industry.

ATTENDANCE PATTERN

Tuesday all day (9.30am to 4pm). The duration of the course is August to April.

PUPIL ELIGIBILITY

You must:

- A genuine interest in car mechanics and enjoy working as part of a team

QUALIFICATION BREAKDOWN

Skills for Work: Automotive Skills SCQF 4:

- The Garage
- The Technician
- The Car
- The Vehicle Modification Project

You will fund raise to design, build and then race an electric kit car.

Valuable resources available in school and online include:

- World of Work at www.myworldofwork.co.uk
- Planit at www.planitplus.net
- Workit at www.workit.info



TO ME WHEN I FINISH?

This course will allow a taste of what to expect in the vehicle repair industry.

It will give knowledge which could assist in getting a Modern Apprentice position within a garage or alternatively a full time position on a further education course.

- Employment (including SVQ's)



BARBERING

South Lanarkshire College City & Guilds SVQ 2 (SCQF Level 5)

COURSE OUTLINE

This course is an ideal introduction for pupils starting out and who want an understanding of the industry; this qualification is designed for you to prepare for further learning or training in the hair and beauty sector. You will learn how to prepare the clients for barbering services, shampoo and diagnose hair on a variety of hair types and conditions, cut hair using barbering techniques, style and blow dry. Alongside practical skills you will learn consultation techniques, gowning and preparation of client for services, customer care and product knowledge and communication skills.



Valuable resources available in school and online include:

- World of Work at www.myworldofwork.co.uk
- Planit at www.planitplus.net
- Workit at www.workit.info



ATTENDANCE PATTERN

You will infill to a full time course, therefore timetable will be negotiated with the college in June.

PUPIL ELIGIBILITY

You must:

- have a minimum of 2 National 5's at Level C or above
- be 16 years of age at the beginning of the programme
- have excellent communication skills and the ability to work effectively with members of the general public
- be highly motivated and have creative and artistic skills
- demonstrate a level of maturity required for the course

QUALIFICATION BREAKDOWN

Barbering City and Guilds SVQ2 - SCQF level 5

Mandatory Units

- Cut hair using basic barbering techniques
- Develop and maintain your effectiveness at work
- Advise and consult with clients
- Cut facial hair to shape, using basic techniques
- Dry and finish men's hair
- Create basic outlines and detailing in hair

Optional units

- Colour and lighten men's hair

WHAT OPPORTUNITIES WILL BE AVAILABLE TO ME WHEN I FINISH?

You might go on to do:

- Modern Apprenticeship
- Employment

BEAUTY AND COMPLEMENTARY THERAPY SKILLS

Glasgow Clyde College National Progression Award SCQF Level 4

COURSE OUTLINE

Studying at Glasgow Clyde College will ensure you experience a broad introduction to this area of study. Practical and theory sessions are designed to ensure you develop both vocational skills and the underpinning knowledge and understanding required. Practical experience will include working on classmates to practice and perfect a range of skills including skin cleansing and nail artistry, make up application and both back, leg and facial Massage. Make Up application and both Back, Leg and Facial Massage. Written work will include workbooks, short tests, projects, portfolio production and home study. Emphasis throughout all units is on the employability skills and attitudes which will help to prepare you for the workplace.

ATTENDANCE PATTERN

Tuesday & Thursday afternoons (1.30pm to 4pm). The duration of the course is August to April.

PUPIL ELIGIBILITY

You must:

- have a keen interest in beauty therapy and complementary therapies
- enjoy working as part of a team and have a caring, mature approach

You are required to work on each other and must be prepared to give and receive massage treatments, remove make up to have

Valuable resources available in school and online include:

- World of Work at www.myworldofwork.co.uk
- Planit at www.planitplus.net
- Workit at www.workit.info



make up reapplied and participate in skin care.

QUALIFICATION BREAKDOWN

National Progression Award in Beauty Skills: An Introduction - SCQF Level 4

Mandatory Units:

- Cosmetology: Make Up Artistry Practical Skills
- Beauty Skills: An Introduction
- Creative Finishes to Hand and Foot

Optional Units

- Fashion Make-Up
- Introduction to Face and Back Massage
- Introduction to Thai Foot Massage

To achieve the NPA Group Award you must successfully complete the three mandatory units listed.

WHAT OPPORTUNITIES WILL BE AVAILABLE TO ME WHEN I FINISH?

You might go on to do:

- A full time NC in Wellness or Beauty Therapy at a local college of further education which can progress to Higher
- VTCT Level 2 or 3 diploma in Complementary Therapies
- National Certificate & Higher National Diploma in Beauty Therapy or Make Up Artistry

The level you might enter would depend on the level and relevance of your other qualifications. After training you can be employed in a beauty salon, spa, cruise ship or nail bar

Williamwood High School Higher (SCQF Level 6)

COURSE OUTLINE

The Higher biology course will develop your interest and enthusiasm for biology in a range of contexts. The skills of scientific inquiry and investigation are developed, throughout the course, by investigating the applications of biology. This will enable you to become a scientifically literate citizen, able to review the science-based claims you will meet. This course is a broad and up-to-date selection of concepts and ideas relevant to the central position of life science within our society.

PUPIL ELIGIBILITY

It is recommended that you have:

- National 5 Biology Course

QUALIFICATION BREAKDOWN

Higher Biology SCQF Level 6:

- DNA and the Genome
- Metabolism and Survival
- Sustainability and Interdependence

Valuable resources available in school and online include:

- World of Work at www.myworldofwork.co.uk
- Planit at www.planitplus.net
- Workit at www.workit.info



COURSE ASSESSMENT

The assignment has two stages:

- A research stage; and
- A report stage, during which the report is written.

The assignment report will be externally marked by SQA

WHAT OPPORTUNITIES WILL BE AVAILABLE TO ME WHEN I FINISH?

You might go on to do:

- Advanced Higher Biology
- Entry to employment, training and further or higher education

Williamwood High School Advanced Higher (SCQF Level 7)

COURSE OUTLINE

The Advanced Higher Biology course is based on integrative ideas and unifying principles of modern biological science. It covers key aspects of life science at the molecular scale and extends to aspects of the biology of whole organisms that are among the major driving forces of evolution.

In addition, the Advanced Higher Biology course aims to develop a sound theoretical understanding and practical experience of experimental investigative work in biological science.

PUPIL ELIGIBILITY

You must have:

- Higher Biology Course

QUALIFICATION BREAKDOWN

Advanced Higher Biology SCQF Level 7:

- Cell and Proteins
- Organisms and Evolution
- Investigative Biology

Valuable resources available in school and online include:

- World of Work at www.myworldofwork.co.uk
- Planit at www.planitplus.net
- Workit at www.workit.info



COURSE ASSESSMENT

Investigation (project)

The purpose of the project is to allow you to carry out an in-depth study of a biology topic. You will individually investigate the underlying biology of your chosen topic, as well as extend and apply the skills of independent /autonomous working. This will further develop and enhance your scientific literacy and assess the application of skills of scientific inquiry and related biology knowledge and understanding.

WHAT OPPORTUNITIES WILL BE AVAILABLE TO ME WHEN I FINISH?

You might go on to do:

- HND/degree in a biology based course
- Entry to employment in a biology-based discipline or related area

BUILDING SERVICES ENGINEERING

Glasgow Kelvin College National Progression Award (SCQF Level 5)

COURSE OUTLINE

The National Progression Award (NPA) in Building Services Engineering will teach you the basic knowledge and skills required to prepare you for further study or potential career in heating and ventilation, plumbing, electrical installation, refrigeration and air conditioning. This new course has been approved by the industry skill sector lead bodies as the preferred entry qualification for the above trades.

Valuable resources available in school and online include:

- World of Work at www.myworldofwork.co.uk
- Planit at www.planitplus.net
- Workit at www.workit.info



ATTENDANCE PATTERN

Tuesday and Thursday afternoons (1.30pm to 4pm). The duration of the course is August to April.

PUPIL ELIGIBILITY

You must have:

- National 5 Maths or equivalent

QUALIFICATION BREAKDOWN

**National Progression Award in Building Services Engineering
SCQF Level 5:**

- Basic Electrical Installation Operations
- Basic Plumbing Operations
- Basic Heating and Ventilation Operations
- Basic Refrigeration and Air Conditioning Operations
- Energy and the Environment
- Systems, Roles, Responsibilities and Procedures
- Science

WHAT OPPORTUNITIES WILL BE AVAILABLE TO ME WHEN I FINISH?

You might go on to do:

- Modern Apprenticeships in Heating and Ventilation, Service and Maintenance, Refrigeration and Air Conditioning or general employment in the engineering or construction industry. A National Certificate in Building Services Engineering, Electrical Installation, Plumbing, Mechanical Engineering or Manufacturing Engineering.



BUILDING SERVICES ENGINEERING

Glasgow Kelvin College National Certificate (SCQF Level 6)

COURSE OUTLINE

This National Certificate (NC) in Building Services Engineering course covers design technology, materials, science, electrical engineering and health and safety with options in air conditioning, refrigeration and heating. Potential careers might include designing, installing and/or maintaining building services. The introduction of new renewable energy technologies make this a very exciting time to get into this field.

ATTENDANCE PATTERN

Monday and Wednesday all day. The duration of the course is August to June.

Please note, that unlike other options, this option is continuous attendance from August to June.

PUPIL ELIGIBILITY

You must have:

- National 5 Maths and a Science at A or B level

Valuable resources available in school and online include:

- World of Work at www.myworldofwork.co.uk
- Planit at www.planitplus.net
- Workit at www.workit.info



QUALIFICATION BREAKDOWN

National Certificate in Building Services Engineering SCQF Level 6:

Mandatory Units:

- Health and Safety
- Graphical Detailing
- Science
- Electrical & Electronic Technology
- Building Services Engineering Technology
- Mathematics: Technician
- Construction Technology & Design
- Building Services Engineering: Design Project

You can study optional units such as:

- Heating & Plumbing
- Air Conditioning & Ventilation
- Refrigeration Technology
- Planning, Organisation and Control of Resources in Construction

WHAT OPPORTUNITIES WILL BE AVAILABLE TO ME WHEN I FINISH?

You might go on to do:

- A degree in engineering
- HNC in Building Services Engineering
- Modern Apprenticeships in Heating and Ventilation Service and Maintenance
- Refrigeration and Air Conditioning or general employment in the engineering or construction industry

BUILDING SERVICES ENGINEERING

Glasgow Kelvin College
Higher National Certificate (SCQF Level 7)
Open to S6 Pupils

COURSE OUTLINE

The Higher National Certificate (HNC) course leads to a national qualification, recognised by employers, universities and professional bodies within the Building Services Engineering sector. It prepares you for a range of technical, professional and managerial careers in Building Services Engineering. You will undertake a course of study that relates to the design, installation, maintenance and management of heating, ventilation and air conditioning (HVAC) systems within commercial/industrial buildings and understand the roles and responsibilities such a profession places on the consumption and management of both existing and future energy sources. Building Services Engineers work with architects to provide their expertise in the design of large commercial/industrial buildings for the installation of vital systems i.e. air conditioning, refrigeration, heating & ventilation, service & maintenance, plumbing and many more vital services required for large building projects to function i.e. shopping centres, office blocks, schools, universities etc.

The HNC course content contains all of the above disciplines with the added value of experiencing the functioning systems within the college workshops.

ATTENDANCE PATTERN

Monday and Wednesday all day. The duration of the course is August to June.

Please note, that unlike other options, this option is continuous attendance from August to June.

PUPIL ELIGIBILITY

You must be working towards or have at least one of the following:

- 6th Year pupil with passes in Higher Maths and a Science at A or B level

Valuable resources available in school and online include:

- World of Work at www.myworldofwork.co.uk
- Planit at www.planitplus.net
- Workit at www.workit.info



QUALIFICATION BREAKDOWN

Higher National Certificate in Building Services Engineering
SCQF Level 7:

- Design Principles and Application
- Heating
- Ventilating and Air Conditioning
- Thermofluids and Acoustic Criteria
- Analytical Methods
- Building Services Engineering Science
- Piped Distribution Services
- Health and Safety in the Building Services Industry
- Building Services Project Management
- Final Project

WHAT OPPORTUNITIES WILL BE AVAILABLE TO ME WHEN I FINISH?

You might go on to do:

- Glasgow Kelvin College has an articulation partnership with many universities to a degree in engineering
- Modern Apprenticeships in Heating and Ventilation Service and Maintenance
- Refrigeration and Air conditioning or general employment in the engineering or construction industry

BUSINESS

South Lanarkshire College **Higher National Certificate (SCQF Level 7/8)** ***Open to S6 Pupils***

COURSE OUTLINE

The Higher National Certificate in Business aims to develop the required knowledge and skills required for employment in a business environment, enabling you to enter a range of administrative, commercial or managerial positions. It will provide you with the opportunity to adopt an innovative and creative approach to work; give you the tools to respond quickly to challenges posed by changes in the business environment.

ATTENDANCE PATTERN

Monday, Tuesday, Wednesday (1.30pm to 4pm) and Thursday all day (9.30am to 4pm). Please note, that unlike other options, this option is continuous attendance from August to June and may impact on other subjects attendance.

PUPIL ELIGIBILITY

You must:

- have 3 passes at National 5, 1 of which should be English and a Business subject
- Have any relevant Scottish Group Award at SCQF level 5 or SCQF level 6 (Higher)

Valuable resources available in school and online include:

- World of Work at www.myworldofwork.co.uk
- Planit at www.planitplus.net
- Workit at www.workit.info



QUALIFICATION BREAKDOWN

HNC in Business – SCQF Level 7/8

Mandatory Units:

- Managing people and Organisations
- Marketing: An Introduction
- Economic Issues: An Introduction
- Business Accounting
- Communication: Business Communication
- I.T. in Business: Spreadsheets
- I.T. Applications Software 1
- Business: Graded Unit 1

A range of Optional units are available such as:

- Company Law: An Introduction
- Creating a Culture of Customer Care

WHAT OPPORTUNITIES WILL BE AVAILABLE TO ME WHEN I FINISH?

You might go on to do:

Undertake further Academic Qualifications such as:

You might go on to do:

- Higher National Diploma (HND) in Human Resource Management, Business, Accounting or Legal Studies
- Articulation agreements are in place with a range of Universities for progression into 2nd or 3rd Year degree programmes

Employment Opportunities:

- The Higher National Certificate/Diploma (HNC/D) in Business prepare candidates for a wide range of employment opportunities in Business such as:
- Office Supervisor
- Assistant Manager/Manager
- Team Leader

BUSINESS AND MARKETING

South Lanarkshire College National Progression Award (SCQF Level 5)

Valuable resources available in school and online include:

- World of Work at www.myworldofwork.co.uk
- Planit at www.planitplus.net
- Workit at www.workit.info



COURSE OUTLINE

This National Progression Award (NPA) in Business and Marketing will provide you with theoretical knowledge of marketing principles in business. It will offer you the foundation knowledge and skills in market research, promotion, event organisation, customer care and selling skills. It aims to provide you with the opportunity to develop skills and aptitudes that will improve your employment potential and career development within this business area.

ATTENDANCE PATTERN

Tuesday & Thursday afternoons (1:30pm to 4pm). The duration of the course is August to April.

ENTRY REQUIREMENTS

You must have:

- 3 passes at National 4, which should include English and Maths
- A genuine interest in Business and Marketing

QUALIFICATION BREAKDOWN

National Progression Award in Business and Marketing – SCQF Level 5:

Mandatory Units:

- Management of Marketing and Operations
- Marketing: Basic Principles

You will study optional units to be discussed with your lecturer once course commences:

- Management of People and Finance
- Skills for Customer Care

WHAT OPPORTUNITIES WILL BE AVAILABLE TO ME WHEN I FINISH?

You might go on to do:

- Modern Apprenticeship
- Employment
- A full time higher education course, such as a Higher National Certificate (HNC), Higher National Diploma (HND) or degree.

The level you might enter would depend on the level and relevance of your other qualifications

BUSINESS MANAGEMENT

Williamwood High School Higher (SCQF Level 6)

COURSE OUTLINE

The Higher Business Management course will extend your understanding of the ways in which organisations in the private, public and third sectors operate. You will carry out activities that highlight the opportunities and constraints on these organisations in the pursuit of their strategic goals.

You will develop skills and knowledge that will deepen your understanding and critical awareness of the issues facing organisations in the management of people and finance. In addition, you will extend your knowledge that will deepen your understanding of the importance to organisations of having effective marketing and operations systems.

PUPIL ELIGIBILITY

You must have:

- Business Management at National 5, other higher subjects may be considered.

QUALIFICATION BREAKDOWN

Higher Business Management SCQF Level 6:

- Understanding Business
- Management of People and Finance
- Management of Marketing and Operations

Valuable resources available in school and online include:

- World of Work at www.myworldofwork.co.uk
- Planit at www.planitplus.net
- Workit at www.workit.info



WHAT OPPORTUNITIES WILL BE AVAILABLE TO ME WHEN I FINISH?

You might go on to do:

- A full time higher education course, such as a Higher National Certificate (HNC), Higher National Diploma (HND) or degree. The level you might enter would depend on the level and relevance of your other qualifications
- Employment (including SVQs)



BUSINESS SKILLS

**City of Glasgow or West College Scotland
Foundation Apprenticeship (SCQF Level 6)
Open to S5 Pupils for 2 Year Model /
S6 for 1 Year Model**

COURSE OUTLINE

The aim of the Foundation Apprenticeship is to provide you with a range of business and IT skills allowing you to apply a solutions-based approach to improving business processes, to work logically and methodically to pre-set deadlines.

ATTENDANCE PATTERN

2 Year Model – City of Glasgow:

Year 1: Tuesday and Thursday (pm) August to April. 1 week in June (Mon - Fri 9.30am - 4.00pm)

Year 2: proposed attendance: Thursday all day shared between college and work experience placement. 1 week in June (Mon - Fri 9.30am - 4.00pm)

2 Year Model – West College Scotland

Year 1: Tuesday and Thursday (pm). The duration of the course is August to June

Year 2 proposed attendance: Tuesday (1:30 to 4pm) at college. Thursday all day shared between college and work experience placement

Please note: Year 2 may be considered 2 of your S6 subjects and you will travel independently by bus or train – travel tickets should be kept as you will be reimbursed.

1 Year Model – City of Glasgow

All day Tuesday at college/All day Thursday shared between college and work placement. One block week in June (Mon - Fri 9.30am - 4.00pm)

Please note: this option may be considered 2 of your S6 subjects and you will travel independently by bus or train – travel tickets should be kept as you will be reimbursed.

PUPIL ELIGIBILITY

You must be working towards:

City of Glasgow

Pupils intending to leave school at the end of S6 with minimum of one or more Highers in relevant subject areas and National 5's. Essential criteria as follows:

- Achieved or working towards Higher (A-C) in relevant subject areas – Economics, Accounts, Business etc. by end of S6

Valuable resources available in school and online include:

- World of Work at www.myworldofwork.co.uk
- Planit at www.planitplus.net
- Workit at www.workit.info



West College Scotland

- National 5 in either English, Maths or a Business subject
 - Progression to a Higher in either Economics, Accounts or Business in S6
- You should have an interest in at least one of the following areas: business processes, procurement, entrepreneurship, accounting or management, including a potential desire to pursue business as a career prospect.

- You will be asked to provide a short personal statement on why you want to attend college and do this Foundation Apprenticeship

Please note if studying Business Higher at school there will be 2 from the 3 business units the same on the Foundation Apprenticeship

QUALIFICATION BREAKDOWN

Foundation Apprenticeship in Business Skills SCQF Level 6 - GL8H 46:

SVQ Level 3 Business and Administration

- Plan how to manage own performance in a business environment
- Communicate in a business environment
- Support other people to work in a business environment
- Design and produce documents in a business environment

National Progression Award in Business with Information Technology

- Understanding Business
- Management of People and Finance
- PC Passport: Working with IT Software – Word Processing and Presenting Information
- PC Passport: Working with IT Software – Spreadsheet and Database
- Contemporary Business Issues
- Work Placement

A Foundation Apprenticeship is a work based learning apprenticeship, where you are expected to attend work placements including work shadowing, industry talks, industry visits and work related training.

WHAT OPPORTUNITIES WILL BE AVAILABLE TO ME WHEN I FINISH?

You might go on to do:

- A full time higher education course, such as a Higher National Certificate (HNC), Higher National Diploma (HND) or degree.
The level you might enter would depend on the level and relevance of your other qualifications
- Employment (including SVQs)

CHEMISTRY

Williamwood High School National 5 (SCQF Level 5)

COURSE OUTLINE

The National 5 chemistry course develops candidates' curiosity, interest and enthusiasm for chemistry in a range of contexts. The skills of scientific inquiry are integrated and developed throughout the course. The relevance of chemistry is highlighted by the study of the applications of chemistry in everyday contexts. This enables candidates to become scientifically literate citizens, able to review the science-based claims they will meet. The course offers opportunities for candidates to develop the ability to think analytically and to make reasoned evaluations. The course covers a variety of relevant contexts including the chemistry of the Earth's resources, the chemistry of everyday products and chemical analysis. It develops a broad, versatile and adaptable skill set which is valued in the workplace, forms the basis for progression to the study of chemistry at a higher level, and provides knowledge useful in the study of all of the sciences.

PUPIL ELIGIBILITY

The course is suitable for learners who have experienced learning across the sciences experiences and outcomes in S1-S3. The course may be suitable for those wishing to study chemistry for the first time.

QUALIFICATION BREAKDOWN

Chemistry National 5 SCQF Level 5:

- Chemical Changes and Structure
- Nature's Chemistry
- Chemistry in Society

COURSE ASSESSMENT

The course assessment has two components, a question paper and an assignment. The relationship between these two components is complementary, to ensure full coverage of the knowledge and skills of the course.

Valuable resources available in school and online include:

- World of Work at www.myworldofwork.co.uk
- Planit at www.planitplus.net
- Workit at www.workit.info



The assignment has two stages:

- A research
- A report stage

WHAT OPPORTUNITIES WILL BE AVAILABLE TO ME WHEN I FINISH?

You might go on to do:

- Higher Chemistry
- A full time higher education course, such as a Higher National Certificate (HNC), Higher National Diploma (HND) or degree. The level you might enter would depend on the level and relevance of your other qualifications



CHEMISTRY

Williamwood High School Higher (SCQF Level 6)

COURSE OUTLINE

The Higher Chemistry course provides a good basis for the future study of chemistry and chemistry-related subjects in higher education or if you wish to pursue a career in a science-based area.

The Higher Chemistry course builds upon prior learning and covers key areas of organic, physical, inorganic and analytical chemistry. The 'Researching Chemistry' unit provides you with the opportunity to develop and apply your literacy, numeracy, communication and scientific investigative skills within a topical, scientific context.



Valuable resources available in school and online include:

- World of Work at www.myworldofwork.co.uk
- Planit at www.planitplus.net
- Workit at www.workit.info



PUPIL ELIGIBILITY

You must have:

- National 5 Chemistry and National 5 Mathematics

QUALIFICATION BREAKDOWN

Higher Chemistry SCQF Level 6:

- Chemical Changes and Structure
- Nature's Chemistry
- Chemistry in Society

COURSE ASSESSMENT

Researching Chemistry

Develop the essential skills for carrying out investigative scientific research in chemistry, and then apply these in the context of a topic chemistry investigation.

The assignment has two stages:

- A research stage
- and
- A report stage

WHAT OPPORTUNITIES WILL BE AVAILABLE TO ME WHEN I FINISH?

You might go on to do:

- Advanced Higher Chemistry
- A full time higher education course, such as a Higher National Certificate (HNC), Higher National Diploma (HND) or degree. The level you might enter would depend on the level and relevance of your other qualifications

CHEMISTRY

Williamwood High School Advances Higher (SCQF Level 7)

Valuable resources available in school and online include:

- World of Work at www.myworldofwork.co.uk
- Planit at www.planitplus.net
- Workit at www.workit.info



COURSE OUTLINE

The Advanced Higher Chemistry course will develop your knowledge and understanding of the physical and natural environments. The course builds on the Higher level, developing further the underlying theories of chemistry and the practical skills used in the chemical laboratory. The course also develops the skill of independent study and thought that are essential in a wide range of occupations.

PUPIL ELIGIBILITY

You must have:

- Higher Chemistry and Higher Mathematics

QUALIFICATION BREAKDOWN

Advanced Higher Chemistry SCQF Level 7:

- Inorganic and Physical Chemistry
- Organic Chemistry and Instrumental Analysis
- Researching Chemistry

COURSE ASSESSMENT

Investigation (project)

The project will assess the application of skills of scientific inquiry and related chemistry knowledge and understanding. It requires you to demonstrate aspects of challenge and application; you will apply skills of scientific inquiry, using related knowledge, to carry out meaningful and appropriately challenging task in chemistry and communicate findings in a report.

The project will be externally marked by the SQA.

WHAT OPPORTUNITIES WILL BE AVAILABLE TO ME WHEN I FINISH?

You might go on to do:

- A full time higher education course, such as a Higher National Diploma (HND) or degree. The level you might enter would depend on the level and relevance of your other qualifications
- Employment in traditional chemical industries such as the petrochemical or pharmaceutical industries.



CIVIL ENGINEERING

**Glasgow Kelvin College or West College Scotland
Foundation Apprenticeship (SCQF Level 6)
Open to S5 Pupils for 2 Year Model /
S6 for 1 Year Model**

COURSE OUTLINE

The aim of the Foundation Apprenticeship is to provide you with the opportunity to develop the skills required by modern professional Civil Engineering Technicians and provide an insight to the many career options available. You will study the principles and practices utilised by engineers and consultancy teams working in the field of renewable energy, roads and bridges, flood alleviation, commercial buildings, marine works and environmental protection.

ATTENDANCE PATTERN

2 Year Model – Glasgow Kelvin College

Year 1: Tuesday and Thursday (pm) August to April. 1 week in June (Mon - Fri 9.30am - 4.00pm)

Year 2 proposed attendance: Thursday all day shared between college and work experience placement. 1 week in June (Mon - Fri 9.30am - 4.00pm)

2 Year Model – West College Scotland

Year 1: Tuesday and Thursday (pm). The duration of the course is August to June

Year 2 proposed attendance: Tuesday (1:30 to 4pm) at college. Thursday all day shared between college and work experience placement.

Please note: Year 2 may be considered 2 of your S6 subjects and you will travel independently by bus or train – travel tickets should be kept as you will be reimbursed.

1 Year Model – Glasgow Kelvin College

All day Tuesday and Friday at college/All day Thursday shared between college and work placement. 1 week in June (Mon - Fri 9.30am - 4.00pm)

Please note, that unlike other options, this option is continuous attendance from August to June and may impact on other subjects attendance and you will travel independently by bus or train – travel tickets should be kept as you will be reimbursed.

PUPIL ELIGIBILITY

West College Scotland

You must be working towards: • National 5 Maths and Physics

- Working towards Higher Maths & Physics by end of S6

You will be asked to provide a short personal statement on why you want to attend college and do this Foundation Apprenticeship.

Valuable resources available in school and online include:

- World of Work at www.myworldofwork.co.uk
- Planit at www.planitplus.net
- Workit at www.workit.info



Glasgow Kelvin College

Pupils intending to leave school at the end of S6 with minimum of one or more Highers and Nat 5's. Essential criteria as follows:

- Achieved or working towards Higher Maths, Physics or Chemistry (A-C) by end of S6

QUALIFICATION BREAKDOWN

Foundation Apprenticeship in Civil Engineering SCQF Level 6 - GL51 46

National Certificate (NC) in Civil Engineering

- Civil Engineering Materials
- Civil Engineering Project
- Civil Engineering Site Work
- Civil Engineering Technology
- Computer Aided Drafting: An Introduction
- Construction Site Surveying: An Introduction
- Health and Safety in the Construction Industry
- Mathematics: Craft 1
- Mechanics for Construction: An Introduction
- Mathematics for Construction Technicians
- Construction Project Management: An Introduction
- Sustainability in the Construction Industry
- SVQ level 3 Site Technical Support Portfolio
- Develop and maintain working relationships of personal development or
- Maintain professional relationships and practice in built environment design

WHAT OPPORTUNITIES WILL BE AVAILABLE TO ME WHEN I FINISH?

You might go on to do:

- Modern Apprenticeship in Civil Engineering or other construction technician area (SVQ Level 3)
- Employment
- A full time higher education course, such as a Higher National Certificate (HNC), Higher National Diploma (HND) or degree. The level you might enter would depend on the level and relevance of your other qualifications

COMPUTER GAMES DEVELOPMENT

West College Scotland National Progression Award (SCQF Level 5)

Valuable resources available in school and online include:

- World of Work at www.myworldofwork.co.uk
- Planit at www.planitplus.net
- Workit at www.workit.info



COURSE OUTLINE

The National Progression Award (NPA) in Computer Games Development provides an opportunity for you to develop your knowledge and understanding of games design and games programming. Computer Gaming is an intensive course and requires you to be self-motivated, enthusiastic and prepared to study out with college. You will be working in labs that are equipped with the latest games software and hardware and foster an atmosphere conducive to creative games development.

ATTENDANCE PATTERN

Tuesday and Thursday afternoons (1.30pm to 4pm). The duration of the course is August to April.

PUPIL ELIGIBILITY

You must have:

- 3 passes at National 4, 1 of which should be Maths
- Due to the competitive nature of this sector, it helps if you demonstrate a real passion for gaming

QUALIFICATION BREAKDOWN

National Progression Award in Computer Games Development SCQF Level 5:

- Computer Games Design
- Computer Games Media Assets
- Computer Games Development

WHAT OPPORTUNITIES WILL BE AVAILABLE TO ME WHEN I FINISH?

You might go on to do:

- A full time higher education course, such as a Higher National Certificate (HNC), Higher National Diploma (HND) or degree, in the computer games industry, computer games (Design), programmer, or related area of study. The level you might enter would depend on the level and relevance of your other qualifications
- A career in graphic design or as a games tester



COMPUTING SCIENCE

Williamwood High School Higher (SCQF Level 6)

COURSE OUTLINE

The Higher Computer Science course will give you the opportunity to develop knowledge and understanding of advanced concepts and practical problem-solving skills in software design, information system design and development through appropriate software development environments and practical and investigative tasks.

You will develop programming and computational thinking skills by designing, implementing, testing and evaluating practical solutions and explaining how these programs work. You will also develop an understanding of computer architecture and the concepts that underpin how programs work.

Valuable resources available in school and online include:

- World of Work at www.myworldofwork.co.uk
- Planit at www.planitplus.net
- Workit at www.workit.info



In addition, you will learn how to apply your computational thinking skills to implement practical solutions using a range of development tools and to develop an understanding the technical, legal, environmental, economic and social issues related to one or more information systems.

PUPIL ELIGIBILITY

You must have:

- Computing Science at National 5

QUALIFICATION BREAKDOWN

- Software Design and Development
- Information System Design and Development

WHAT OPPORTUNITIES WILL BE AVAILABLE TO ME WHEN I FINISH?

You might go on to do:

- A full time higher education course, such as a Higher National Certificate (HNC), Higher National Diploma (HND) or degree, in the computer games industry, computer games (Design), programmer, or related area of study. The level you might enter would depend on the level and relevance of your other qualifications
- Employment (including SVQs)



CONSTRUCTION CRAFTS

West College Scotland Pre Apprenticeship (SCQF Level 4/5)

COURSE OUTLINE

The aim of the Pre Apprenticeship in Construction course will provide you with a range of skills, industry-recognised qualifications and certificates that will assist you in the pursuit of a construction related apprenticeship. The course would involve workshop sessions on Carpentry and Joinery, Brickwork, Plumbing and Electrical practical skills.

ATTENDANCE PATTERN

Tuesday and Thursday afternoons (1.30pm to 4pm).
The duration of the course is August to May.

PUPIL ELIGIBILITY

You must have:

- 3 passes at National 5, which should include Maths and English

QUALIFICATION BREAKDOWN

You will achieve 2 Awards:

Pre Apprenticeship in Construction - SCQF Level 5:

- Carpentry and Joinery
- Plumbing Practical Skills
- Electrical Practical Skills
- Brickwork

Health and Safety in a working Environment - SCQF Level 4:

On Successful completion of this unit you will sit the C (Construction Skills Certificate Scheme) Card test

Valuable resources available in school and online include:

- World of Work at www.myworldofwork.co.uk
- Planit at www.planitplus.net
- Workit at www.workit.info



WHAT OPPORTUNITIES WILL BE AVAILABLE TO ME WHEN I FINISH?

The construction sector is a major employer and significant contributor to the Scottish economy and there is a need for trainees in all trades in this diverse sector. You will have the opportunity to progress at NQ level in construction with further opportunity to continue on to HNC Construction at college.

You might go on to do:

- A Modern Apprenticeship in one of the main trades at craft or operative level. You would train on the job, on a building site or workshop, and off the job at college
- A one year full time National Progression Award (NPA) in Construction at college



CONSTRUCTION MANAGEMENT

Glasgow Kelvin College
Higher National Certificate (SCQF Level 7)
Open to S6 Pupils

Valuable resources available in school and online include:

- World of Work at www.myworldofwork.co.uk
- Planit at www.planitplus.net
- Workit at www.workit.info



COURSE OUTLINE

The Higher National Certificate (HNC) Construction Management course is a unique opportunity to complete a recognised qualification within 1 year and providing you with the opportunity to progress to HND Level or University. This is an excellent course for learners in the Senior Phase of secondary school where learners can enhance their potential prospects for employment in the Construction Industry in a supervisory role.

The HNC in Construction Management is designed to provide in-depth insight into the roles, responsibilities, and duties performed by Construction Management Trainees in the Building Industry and equip you with the knowledge, understanding and skills to allow you to gain employment in the built environment sector and to progress to a higher education or professional body qualification.

ATTENDANCE PATTERN

Monday and Tuesday all day. The duration of the course is August to June. Please note, that unlike other options, this option is continuous attendance from August to June.

PUPIL ELIGIBILITY

You must have:

- 2 passes at Higher, 1 of which should be Mathematics or English
- An interest in working in the construction industry

QUALIFICATION BREAKDOWN

Higher National Certificate in Construction Management
SCQF Level 7:

- Building Services in Large Buildings
- Building Services: Introduction
- CAD: 2D1
- Construction Materials and Specification
- Construction Site Surveying
- Construction Technology
- Construction Technology: Industrial/Commercial Superstructure
- Domestic Construction
- Health and Safety in Construction
- Site Administration
- Standard Forms of Construction Contracts
- Substructure

WHAT OPPORTUNITIES WILL BE AVAILABLE TO ME WHEN I FINISH?

You might go on to do:

- Glasgow Kelvin College has an articulation partnership with many universities to a degree in engineering
- Modern Apprenticeships in Construction
- Construction Management Trainee

CONSTRUCTION PATHWAYS

Glasgow Kelvin College (SCQF Level 4)

COURSE OUTLINE

The Course includes practical construction crafts units in 5 trade areas. It is a suitable level of entry for candidates with an aptitude for practical crafts work who could cope with demands at National 4. You will learn a variety of skills in the trade specific units. In addition, you will develop skills and attitudes that enhance employability, not just in the Construction industry but in employment generally. Included in the course is the Work-Based Challenge Unit which will require you to draw on technical skills developed through the course and apply these in a work based situation. The course will have ~~an Industry partner fully committed to the delivery~~ the involvement of an Industry partner in developing and evaluating the challenge is essential to its success in ensuring delivery and assessment is reflective of real work-based situations.

ATTENDANCE PATTERN

Tuesday & Thursday afternoons (1.30pm to 4pm).

The duration of the course is August to April.

PUPIL ELIGIBILITY

School pupils must have a genuine interest in construction when applying.

Valuable resources available in school and online include:

- World of Work at www.myworldofwork.co.uk
- Planit at www.planitplus.net
- Workit at www.workit.info



QUALIFICATION BREAKDOWN

Pathways Course Qualification to be confirmed: SCQF Level 4

You will study optional units to be discussed with the lecturer once course commences, such as:

- Carpentry and Joinery
- Painting and Decorating
- Brickwork
- Roof Tiling: An Introduction
- Plumbing

WHAT OPPORTUNITIES WILL BE AVAILABLE TO ME WHEN I FINISH?

You might go on to do:

- A Modern Apprenticeship in construction (such as bricklaying) at craft or operative level. You would train on the job, on a building site or workshop, and off the job at a college or training centre.
- A one year full time course National Certificate (NC) or National Qualification (NQ) course, in a related area of study such as Construction Skills or Construction Crafts at a college of further education

CONSTRUCTION SKILLS

CARPENTRY AND JOINERY

**Glasgow Clyde College - Vocational Facilities @
Barrhead High School
SCQF Level 4**

Valuable resources available in school and online include:

- World of Work at www.myworldofwork.co.uk
- Planit at www.planitplus.net
- Workit at www.workit.info



COURSE OUTLINE

The City and Guilds Construction Skills – Carpentry and Joinery course will help you gain an insight into several trades and make informed choices regarding a career in construction. Training will be provided by Glasgow Clyde College. The course will also provide you with the opportunity to develop employability skills and attitudes, which will help to prepare you for the workplace.

ATTENDANCE PATTERN

Tuesday & Thursday afternoons (1.30pm to 4pm). The duration of the course is August to April.

PUPIL ELIGIBILITY

You must have:

- 3 passes at National 4, which should include Maths and a Technical subject
- An interest in working in the construction industry
- Some aptitude for graphical forms of communication, as you will be required to read basic drawings
- You are required to work independently and in a team

QUALIFICATION BREAKDOWN

City and Guilds Certificate in Construction Skills - SCQF Level 4:

- Joinery
- Introduction to Industry
- Project work
- Health and Safety
- Construction operations

Health and Safety in a working Environment - SCQF Level 4:

On Successful completion of this unit you will sit the CSCS (Construction Skills Certificate Scheme) Card test

WHAT OPPORTUNITIES WILL BE AVAILABLE TO ME WHEN I FINISH?

You might go on to do:

- A Modern Apprenticeship in construction at craft or operative level. You would train on the job, on a building site or workshop, and off the job at a college or training centre. Apprenticeships usually last for three years
- A one year full time course National Certificate (NC) or National Qualification (NQ) course, in a related area of study such as Construction Skills or Construction Crafts at a college of further education

CONSTRUCTION SKILLS CERTIFICATE SCHEME (CSCS)

West College Scotland – Vocational Facilities
@ Barrhead High School
(SCQF Level 4)

COURSE OUTLINE

In order to access a construction site you are required to possess a current up to date CSCS (Construction Skills Certificate Scheme) Card. CSCS was set up to help the construction industry to improve quality and reduce accidents. CSCS cards are increasingly demanded as proof of occupational competence by contractors, public and private clients and others.

This would enhance any Monday to Thursday construction course.

ATTENDANCE PATTERN

Friday mornings (9:15am to 11am). The duration of the course is August to December

PUPIL ELIGIBILITY

It is essential that you have:

- Have a desire to work in the construction industry
- National 4 in English and Maths
- Are 16 years old prior to commencement of the course

Valuable resources available in school and online include:

- World of Work at www.myworldofwork.co.uk
- Planit at www.planitplus.net
- Workit at www.workit.info



QUALIFICATION BREAKDOWN

CSCS SCQF Level 4:

- Health and Safety Essentials
- Introduction to Workplace Safety
- Personal Protective Equipment
- Accidents at Work
- Site Safety Documentation
- Manual Handling
- Safety Signage
- Site Welfare
- Working at Height
- Fire Prevention
- Emergency Procedures including First Aid
- Electrical Safety
- Hand Held Equipment
- Excavation and Confined Spaces

Please note that you are required to work independently and there is no practical element to this course.

WHAT OPPORTUNITIES WILL BE AVAILABLE TO ME WHEN I FINISH?

You might go on to do:

- Passing the assessment of CSCS certificate will allow you to prove competency to work on a construction site
- Enhanced CV for apprenticeship application. Improved opportunities to secure full time construction course in College
- You might go on to do a Modern Apprenticeship in construction

CONSTRUCTION SKILLS

Glasgow Clyde College - Cardonald Campus SCQF Level 4

Valuable resources available in school and online include:

- World of Work at www.myworldofwork.co.uk
- Planit at www.planitplus.net
- Workit at www.workit.info



COURSE OUTLINE

The City and Guilds Construction Skills course will help you gain an insight into several trades and make informed choices regarding a career in construction. Glasgow Clyde College will also provide you with the opportunity to develop employability skills and attitudes, which will help to prepare you for the workplace.

ATTENDANCE PATTERN

Monday, Tuesday, Wednesday (1.30pm to 4pm) and Thursday all day (9.30am to 4pm). The duration of the course is August to April.

PUPIL ELIGIBILITY

You must have:

- 3 passes at National 4, which should include Maths and a Technical subject
- An interest in working in the construction industry
- Some aptitude for graphical forms of communication, as you will be required to read basic drawings
- You are required to work independently and in a team

QUALIFICATION BREAKDOWN

You will achieve 2 awards:

City and Guilds Diploma in Construction Skills - SCQF Level 4

- Brickwork
- Joinery
- Introduction to Industry
- Health and Safety
- Construction operations

Health and Safety in a working Environment - SCQF Level 4

On Successful completion of this unit you will sit the CSCS (Construction Skills Certificate Scheme) Card test

WHAT OPPORTUNITIES WILL BE AVAILABLE TO ME WHEN I FINISH?

You might go on to do:

- A Modern Apprenticeship in construction (such as bricklaying) at craft or operative level. You would train on the job, on a building site or workshop, and off the job at a college or training centre. Apprenticeships usually last for three years
- A one year full time course City and Guilds SCQF Level 5 or Level 4/5 course on Modern Construction and the Built Environment
- Scottish Vocational Qualifications in the area of construction crafts

CREATIVE & DIGITAL MEDIA FOUNDATION APPRENTICESHIP

City of Glasgow College, Glasgow Clyde and Glasgow Kelvin College or West College Scotland – SCQF Level 6

**Open to S5 Pupils for 2 Year Model/
S6 for 1 Year Model**

COURSE OUTLINE

The aim of the Foundation Apprenticeship is to provide you with the opportunity to develop the skills required by the Creative and Digital Media industry for pupils in S5 and S6. You will gain knowledge in units that will develop an understanding of the technologies, processes and practices used within the Creative Industries.

ATTENDANCE PATTERN

2 Year - City of Glasgow College, Glasgow Clyde and Glasgow Kelvin College

Year 1: Tuesday and Thursday (pm) and 1 week in June (Mon - Fri 9.30am - 4.00pm)

Year 2 proposed attendance: Thursday all day shared between college and work experience placement. 1 week in June (Mon - Fri 9.30am - 4.00pm)

2 Year Model – West College Scotland

Year 1: Tuesday and Thursday (1.30 to 4pm). The duration of the course is August to June

Year 2 proposed attendance: Tuesday (1:30 to 4pm) at college. Thursday all day work experience placement. The duration of the course is August to June

Please note: Year 2 may be considered 2 of your S6 subjects and you will travel independently by bus or train – travel tickets should be kept as you will be reimbursed.

1 Year Model: Glasgow Kelvin College

Tuesday and Thursday all day shared between college and work placement. 1 week in June (Mon - Fri 9.30am - 4.00pm)

You will travel independently by bus or train – travel tickets should be kept as you will be reimbursed

PUPIL ELIGIBILITY

City of Glasgow College, Glasgow Clyde and Glasgow Kelvin College

Candidates intending to leave school at the end of S6 with minimum of one or more Highers in relevant subject areas. Essential criteria as follows:

- Achieved or working towards Higher (A-C) in relevant subject areas – IT, English, Maths etc. by end of S6

Valuable resources available in school and online include:

- World of Work at www.myworldofwork.co.uk
- Planit at www.planitplus.net
- Workit at www.workit.info



West College Scotland

You must be working towards:

- National 5 English • Progression to a Higher English by S6
- You should have an appreciation of different technologies, alongside general knowledge, including the capacity to work efficiently and in teams

You will be asked to provide a short personal statement on why you want to attend college and do this Foundation Apprenticeship.

QUALIFICATION BREAKDOWN

Foundation Apprenticeship in Creative and Digital media SCQF Level 6 - GM69 46:

NPA in Creative and Digital Media: Technologies, Processes and Practices

- Creative Industries: An Introduction – Scotland
- Creative Industries: Understanding a Creative Brief
- Media: Understanding the creative process
- Storytelling for the Creative Industries

Diploma in Creative Digital Media

- Work effectively with others in the Creative Industries
- Ensure Your Own Actions Reduce Risks to Health and Safety
- Communicating Using Digital Marketing/Sales Channels
- Use Digital and Social Media in Marketing Campaigns

A Foundation Apprenticeship is a work based learning apprenticeship, where you are expected to attend work placements including work shadowing, industry talks, industry visits and work related training.

WHAT OPPORTUNITIES WILL BE AVAILABLE TO ME WHEN I FINISH?

You might go on to do:

- Modern Apprenticeship
- Employment
- A full time higher education course, such as a Higher National Certificate (HNC), Higher National Diploma (HND) or degree. The level you might enter would depend on the level and relevance of your other qualifications

CYBER SECURITY

Glasgow Clyde College (SCQF Level 6)

COURSE OUTLINE

This National Progression Award (NPA) in Cyber Security provides foundation knowledge and skills in data security, digital forensics and ethical hacking – providing a skills pipeline into the Cyber Security industry. The course is designed to raise awareness of Cyber Security and fill the current skills gap in this field. You will be taught how to improve your cyber hygiene and resilience, and enable you to identify security vulnerabilities safely, legally and ethically. It will also help you to contribute more safely to virtual communities. The award will provide you with the tools to become knowledgeable, skilled and aware of the potential misuses of, and unauthorised access to, computer systems but who use these competences for legal and ethical purposes.

ATTENDANCE PATTERN

Tuesday and Thursday afternoons (1.30pm to 4pm). The duration of the course is from the end of August to April.

PUPIL ELIGIBILITY

You must have:

- 3 passes at National 5, 1 of which should be Maths
- a clear interest in the subject area

Valuable resources available in school and online include:

- World of Work at www.myworldofwork.co.uk
- Planit at www.planitplus.net
- Workit at www.workit.info



QUALIFICATION BREAKDOWN

National Progression Award in Cyber Security SCQF level 6:

- Data Security
- Ethical Hacking
- Digital Forensics

WHAT OPPORTUNITIES WILL BE AVAILABLE TO ME WHEN I FINISH?

Successful completion of this award may allow progression to:

- National Certificate (NC) Digital Media Computing SCQF Level 5 or 6
- National Certificate (NC) Information Technology
- Higher National Certificate/Diploma (HNC/D) Computing, Computer Games Development, Information Technology, Computer Networking, Interactive Media or Multimedia

The level you might enter would depend on the level and relevance of your other qualifications

- Entry level jobs and training, including Modern Apprenticeships in the computing industry.

DATA SCIENCE

Glasgow Clyde College – Cardonald Campus (SCQF Level 6)

COURSE OUTLINE

The aim of the National Progression Award (NPA) in Data science is to provide you with the knowledge and skills in this area. Data science is one of a number of emerging technologies, which include artificial intelligence and machine learning, which are becoming vital for contemporary societies. You will develop an understanding of what data science is used for, the principles behind it, and gain practical skills in analysing large datasets. Glasgow Clyde College will prepare you with necessary academic skills to progress on to Higher Education or to the workplace.

ATTENDANCE PATTERN

Tuesday and Thursday afternoons (1.30pm to 4pm). The duration of the course is from the end of August to April.

PUPIL ELIGIBILITY

You must have:

- 3 passes at National 5, which should include Maths Science or Computing
- A clear interest in the subject area

QUALIFICATION BREAKDOWN

National Progression Award in Data Science SCQF level 6:

Mandatory Units

- Data Citizenship
- Data Science

Valuable resources available in school and online include:

- World of Work at www.myworldofwork.co.uk
- Planit at www.planitplus.net
- Workit at www.workit.info



You will also complete 1 optional unit, which the college will choose.

Optional Units

- Computer Programming
- Data Science: Project
- Data Science: Statistics
- Data Security
- Machine Learning
- Statistics

WHAT OPPORTUNITIES WILL BE AVAILABLE TO ME WHEN I FINISH?

You might go on to do:

- National Certificate in Computing with Digital Media
- Higher National Certificate (HNC) in Data Analytics
- Higher National Diploma (HND) Computer Science
- Technical Apprenticeship in Data Analytics
- Graduate Apprenticeship in Data Analytics
- BSc Computer Science or Data Science
- Degree in a range of other disciplines

The level you might enter would depend on the level and relevance of your other qualifications

A career in:

- Business intelligence analyst
- Data analyst
- Data engineer
- Data scientist
- Statistician
- Systems analyst

DESIGN AND MANUFACTURE

Williamwood High School National 5 (SCQF Level 5)

Valuable resources available in school and online include:

- World of Work at www.myworldofwork.co.uk
- Planit at www.planitplus.net
- Workit at www.workit.info



COURSE OUTLINE

Design and Manufacture at National 5, introduces students to the world of product design and manufacturing. Creativity is at the heart of this Course and its combination with technology makes it exciting and dynamic. The Course combines science, mathematics and technology with design and manufacturing. In the Course, students are encouraged to exercise imagination, creativity and logical thinking.

The Course provides students with skills that allow them to learn live and work more effectively in our advancing technological society. It allows them to become not just effective contributors but informed and discerning consumers.

The aims of the course is to develop skills in the design and manufacturing prototypes and products, knowledge and understanding of manufacturing processes and materials and an understanding of the impact of design and manufacturing technologies on our environment and society.

PUPIL ELIGIBILITY

There are no formal entry requirements to pursue this course.

QUALIFICATION BREAKDOWN

Design and Manufacture National 5 SCQF Level 5

- Design
- Materials and Manufacturing

COURSE ASSESSMENT

Assessment of this course is made up of the following two components:

- Design skills
- Practical skills

WHAT OPPORTUNITIES WILL BE AVAILABLE TO ME WHEN I FINISH?

You might go on to do:

- Higher Design and Manufacture.
- Advanced Higher Design and Manufacture
- Modern Apprenticeships in Manufacturing, Design Engineering, Architecture, and Quantity Surveying

See relevant job profiles at PlanIT Plus website:
www.planitplus.net



DESIGN AND MANUFACTURE

Williamwood High School Higher (SCQF Level 6)

Valuable resources available in school and online include:

- World of Work at www.myworldofwork.co.uk
- Planit at www.planitplus.net
- Workit at www.workit.info



COURSE OUTLINE

The aim of the Higher Design and Manufacture course is to develop your practical skills in the planning and development of models and prototypes. You will learn the processes of product design from brief to resolved design proposals and specification; develop skills in initiating, developing, articulating and communicating design proposals for products. The course allows you to develop an appreciation of design concepts and the various factors that influence the design and manufacture of products. In addition, you will 'close the design loop' by manufacturing a set of design ideas. It allows you to consider the manufacturing techniques and processes that would apply to a design proposal in an industrial/ commercial context.

PUPIL ELIGIBILITY

You should have:

- Design and Manufacture at National 5

QUALIFICATION BREAKDOWN

Higher Design and Manufacture SCQF Level 6:

- Design
- Materials and Manufacturing

COURSE ASSESSMENT

Assessment of this course is made up of the following:

This course will be assessed through a combination of an assignment and a question paper. In the Design and Manufacture assignment, students will draw on their range of design skills, knowledge of materials, and practical skills, in order to produce an effective overall response to the brief. The response to the brief will include a folio and model and/or a prototype.

The brief for the assignment, which will cover a range of key design factors, will be sufficiently open and flexible to allow for personalisation and choice.

The question paper requires depth of understanding and application of knowledge from the Units.

WHAT OPPORTUNITIES WILL BE AVAILABLE TO ME WHEN I FINISH?

You might go on to do:

- Advanced Higher Design and Manufacture
- Modern Apprenticeships in Manufacturing, Design Engineering, Architecture, Quantity Surveying, Product Design, Graphic Design, Architecture and Teaching.

DESIGN AND MANUFACTURE

Williamwood High School Advanced Higher (SCQF Level 7)

Valuable resources available in school and online include:

- World of Work at www.myworldofwork.co.uk
- Planit at www.planitplus.net
- Workit at www.workit.info



COURSE OUTLINE

The Advanced Higher in Design and manufacture course will build on the knowledge; understanding and skills developed by you in the Higher Design and Manufacture course and will provide a useful bridge towards further study of related disciplines in higher education. The course allows you to consider the various factors that impact on a product's design. It will consider the life cycle of a product from its inception through design, manufacture, use, re-use and the impacts and consequences of the product's disposal. The course stresses the integration of designing and manufacturing as a connected activity and that design is an iterative process. The course highlights the close relationship between designing, making, modelling, testing, and refining and presenting design ideas.

PUPIL ELIGIBILITY

You must have:

- Higher Design & Manufacture at A or B level

QUALIFICATION BREAKDOWN

**Advanced Higher Design and Manufacture
SCQF Level 7:**

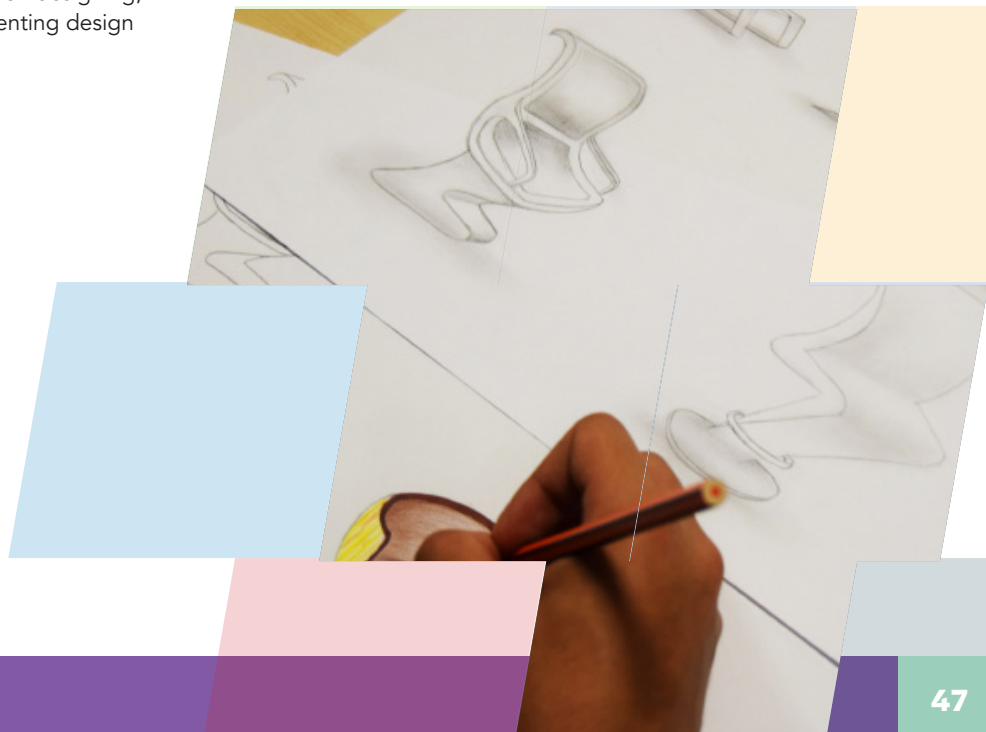
- Product Analysis
- Product Development
- Product Evolution

WHAT OPPORTUNITIES WILL BE AVAILABLE TO ME WHEN I FINISH?

You might go on to do:

- A full time higher education course, such as a Higher National Diploma (HND) and degree in design and/or manufacturing-related disciplines. The level you might enter would depend on the level and relevance of your other qualifications
- Employment in design and/or manufacturing design

See relevant job profiles at PlanIT Plus website:
www.planitplus.net



DIGITAL FUTURE HOMES

West College Scotland – Vocational Facilities @ Barrhead High School (SCQF Level 4)

COURSE OUTLINE

The Digital Future Homes course will provide you with the opportunity to develop basic practical skills necessary to work within the building services industry, in particular within the domestic electrical installation, plumbing and heating sectors. You will gain experience in the specific skills involved in the installation of electricity, plumbing and heating systems. In addition, you will learn how to integrate new digital control and monitoring systems operated by Amazon Echo, Google home or similar into new and existing homes. You will gain an overview and an awareness of the skills required by employers within this industry. The inclusion of digital home technology will give you a good understanding of new innovations within the home technology market. You will design and build a digital future home electrical, plumbing and heating installation.

ATTENDANCE PATTERN

Tuesday and Thursday afternoons (1:30pm to 4pm).
The duration of the course is August to April.

Valuable resources available in school and online include:

- World of Work at www.myworldofwork.co.uk
- Planit at www.planitplus.net
- Workit at www.workit.info



PUPIL ELIGIBILITY

- Have a genuine interest in building services and enjoy working as part of a team
- Not be registered colour blind

QUALIFICATION BREAKDOWN

Please note you will be studying 2 Units, 1 at SCQF level 4, this is not a Group Award:

- West College Scotland Certificate in Digital Future Homes (SCQF 4)
- IOSH Working Safely

WHAT OPPORTUNITIES WILL BE AVAILABLE TO ME WHEN I FINISH?

This course will reflect what to expect in the building services sector including skilled job roles such as electrician, plumber and gas technician. The course will be supported by industry partners such as SECTT and SNIPEF and delivered by highly experience and qualified college staff. You will gain knowledge which could assist in getting a Modern Apprentice position within the building services industry or alternatively a full time position on a further education course.

DRAMA

Williamwood High School Higher (SCQF Level 6)

COURSE OUTLINE

The Higher Drama course is designed to give you a knowledge and understanding of many aspects of theatre, including an appreciation of theatre forms and styles, theatre practitioners and drama plays/scripts. In addition, the course aims to develop theatre skills and increase experience of theatrical performance, as well as develop knowledge of the social, historical and theatrical contexts of plays.

Valuable resources available in school and online include:

- World of Work at www.myworldofwork.co.uk
- Planit at www.planitplus.net
- Workit at www.workit.info



PUPIL ELIGIBILITY

You should have:

- National 5 English
- National 5 Drama

QUALIFICATION BREAKDOWN

Higher Drama SCQF Level 6:

- Drama Skills
- Drama: Production Skills

PERFORMANCE ASSESSMENT

The performance has two sections: a performance and a support log.

WHAT OPPORTUNITIES WILL BE AVAILABLE TO ME WHEN I FINISH?

The social and personal skills that are developed through drama are also beneficial and transferable to lifelong learning. Higher drama is a recognised qualification to have in order to gain entry into courses such as law. Other careers/courses that can benefit from drama experience are Teaching, Politics, Business, Psychology, English Studies, Media Studies, Journalism, Social work and many more.

You might go on to do:

- A full time higher education course, such as a Higher National Certificate (HNC), Higher National Diploma (HND) and degree. The level you might enter would depend on the level and relevance of your other qualifications
- Employment or training



Williamwood High School Advanced Higher (SCQF Level 7)

COURSE OUTLINE

The Advanced Higher Drama course is designed to provide a progression from the Higher course for those interested in theatre practice. The course will give you the opportunity to explore the role and craft of the actor, director, and designer. Through devised and textual activities, you will practically explore a variety of acting, directing and design concepts. You will independently create and perform a devised drama production and explore how meaning and theatrical concepts can be communicated to an audience. In addition, you will explore the performance and directorial theories of a key practitioner from a chosen perspective: acting, directing or designer (lighting/sound/set/costume/makeup/props).

PUPIL ELIGIBILITY

You must have:

- Higher Drama
- Higher English

QUALIFICATION BREAKDOWN

Advanced Higher Drama SCQF Level 7:

- Drama Skills
- Production Skills

Valuable resources available in school and online include:

- World of Work at www.myworldofwork.co.uk
- Planit at www.planitplus.net
- Workit at www.workit.info



COURSE ASSESSMENT

Assessment of this course is made up of the following practical options and project:

Acting – performance of two contrasting acting roles to a live audience from the prescribed list and produce a report to support the process and interpretation of the roles.

Directing – prepare and direct a key scene of your choosing from the prescribed list of texts.

Design – produce a set design for a play from the prescribed list of texts, which must allow for one significant set change and be relevant for an audience of today. You must prepare for and produce a scale model set for the play and TWO other areas of design; lighting, sound, costume, makeup and props.

Project

You will select a topic from relevant and current performance theories and practice and produce a written report (3,000 words maximum). The topic may come from the work of a current theatre director, company, playwright or designer.

WHAT OPPORTUNITIES WILL BE AVAILABLE TO ME WHEN I FINISH?

You might go on to do:

- A full time higher education course, such as a Professional Development Awards (PDAs), (HNC), Higher National Diploma (HND) and degree. The level you might enter would depend on the level and relevance of your other qualifications
- Employment or training

EARLY EDUCATION AND CHILDCARE

Glasgow Clyde College Skills for Work 4 (SCQF Level 4)

COURSE OUTLINE

The Skills for Work (SfW) in Early Education and Childcare course at Glasgow Clyde College can offer you an introduction to the basic knowledge and skills required to prepare you for further study leading to potential employment in the early education and childcare sector. The course is designed as an introduction to Early Education and Childcare at National 4 level and will help you understand some of the demands and responsibilities for working in this sector.

ATTENDANCE PATTERN

Tuesday and Thursday afternoons (1.30pm to 4pm). The duration of the course is August to April.

Valuable resources available in school and online include:

- World of Work at www.myworldofwork.co.uk
- Planit at www.planitplus.net
- Workit at www.workit.info



PUPIL ELIGIBILITY

You must have

- English National 4

QUALIFICATION BREAKDOWN

Skills for Work: Early Education and Childcare SCQF Level 4:

- Child Development
- Play in Early Learning and Childcare
- Care of Children
- Working in Early Education and Childcare

Please note that there is no placement element attached to this course.

WHAT OPPORTUNITIES WILL BE AVAILABLE TO ME WHEN I FINISH?

You might go on to do:

- A Modern Apprenticeship in Childcare or Early Years Care and Education, leading to a Scottish Vocational Qualification (SVQ) Levels 2 to 4 in Children's Care, Learning and Development. You would train on the job in a nursery and off the job (usually one day a week) at a college or training centre. Apprenticeships usually last for two years
- A one year full time National Certificate (NC) or National Qualification (NQ) course in Early Education and Child Care at a local college of further education
- A one year full time higher education course, such as a Higher National

Certificate (HNC) in Early Education and Childcare. You may be able to progress to a Nursery Manager post once you have achieved a degree or equivalent in Childhood Practice



EARLY EDUCATION AND CHILDCARE

Glasgow Clyde College - Vocational Facilities @ Barrhead High School Skills for Work 5 (SCQF Level 5)

COURSE OUTLINE

The Skills for Work (SfW) in Early Learning and Childcare Level 5 course at Glasgow Clyde College can offer you an introduction to the knowledge and skills required to prepare you for further study leading to potential employment in the Early Learning and Childcare sector. The course is designed as an introduction to Early Education and Childcare at National 5 level and will help you understand some of the demands and responsibilities for working in this sector.

ATTENDANCE PATTERN

Tuesday and Thursday afternoons (1.30pm to 4pm). The duration of the course is August to April.

PUPIL ELIGIBILITY

You must have:

- English National 5

QUALIFICATION BREAKDOWN

Skills for Work: Early Education and Childcare SCQF Level 5:

This course is a group award and consists of 4 units at National 5 level which will cover a broad range of issues in each area of the units listed:

Mandatory Units:

- Development and Wellbeing of Children and Young People
- Play in Early Learning and Childcare
- Working in Early Learning and Childcare

Valuable resources available in school and online include:

- World of Work at www.myworldofwork.co.uk
- Planit at www.planitplus.net
- Workit at www.workit.info



You will also complete one optional unit which will be chosen by the college:

- Contemporary Families
- Care and Feeding of Children and Young People
- Introduction to First Aid
- Children and Young People: Rights and Protection

Please note that there is no placement element attached to this course.

WHAT OPPORTUNITIES WILL BE AVAILABLE TO ME WHEN I FINISH?

This may lead to further vocational training and/or potential employment within certain posts in the childcare sector.

You might go on to:

- A Modern Apprenticeship in Childcare or Early Years Care and Education, leading to a Scottish Vocational Qualification (SVQ) Levels 2 to 4 in Social Services: Children and Young People. You would train on the job in a nursery and off the job (usually one day a week) at a college or training centre. Apprenticeships usually last for two years SVQ Level's 2 – 4 in Early Years Level 6 Early Education and Childcare course at college, dependent upon achieving the required Nat 5's, one must be English, and satisfactory outcome of college interview
- HNC level 7 Early Education and Childcare at college. The level you might enter would depend on the level and relevance of your other qualifications
- On gaining employment, further possible progression onto level 8 Professional Development Award as well as degree level study at level 9 one day a week) at a college or training centre. Apprenticeships usually last for two years
- SVQ Level 2 Playwork

ENGINEERING SYSTEMS

**Glasgow Kelvin College or West College Scotland
Foundation Apprenticeship (SCQF Level 6)
Open to S5 Pupils for 2 Year Model /
S6 for 1 Year Model**

COURSE OUTLINE

The aim of the Foundation Apprenticeship is to provide you with the opportunity to develop the skills and knowledge to enter into a career in Engineering. You will gain vocational qualifications that combine sector-specific skills alongside the knowledge that underpins these skills in a workplace setting.

ATTENDANCE PATTERN

2 Year Model – Glasgow Kelvin College

Year 1: Tuesday and Thursday (pm). 1 week in June (Mon - Fri 9.30am - 4.00pm)

Year 2: Tuesday and Thursday all day shared between college and work experience placement. 1 week in June (Mon - Fri 9.30am - 4.00pm)

2 Year Model - West College Scotland

Year 1: Tuesday & Thursday afternoons at college (1:30pm to 4.30pm). The duration of the course is August to June

Year 2 - Tuesday & Thursday afternoons at college (1.30pm to 4.30pm) and a full day work placement. The duration of the course is August to June.

Please note: Year 2 may be considered 2 of your S6 subjects and you will travel independently by bus or train – travel tickets should be kept as you will be reimbursed.

1 Year Model – Glasgow Kelvin College

All day Tuesday and Friday at college/All day Thursday shared between college and work placement. 1 week in June (Mon - Fri 9.30am - 4.00pm)

Please note, that unlike other options, this option is continuous attendance from August to June and may impact on other subjects attendance and you will travel independently by bus or train – travel tickets should be kept as you will be reimbursed.

PUPIL ELIGIBILITY

Glasgow Kelvin College

Pupils intending to leave school at the end of S6 with minimum of 1 or more Highers and National 5's. Essential criteria as follows:

- Achieved or working towards Higher Maths, Physics or Chemistry (A-C) by end of S6

West College Scotland

You must have achieved:

- National 5 Maths and Physics
- Progression to Higher Maths in S6

You will be asked to provide a short personal statement on why you want to attend college and do this Foundation Apprenticeship.

Valuable resources available in school and online include:

- World of Work at www.myworldofwork.co.uk
- Planit at www.planitplus.net
- Workit at www.workit.info



QUALIFICATION BREAKDOWN

Foundation Apprenticeship in Engineering Systems SCQF Level 6 - GL51 46:

NC Engineering Systems SCQF L6: • Communication

- Engineering: Applying Information Technology
- Mathematics: Technician 1
- Mechanical Engineering Principles L6
- Engineering Systems
- Engineering Materials
- Graphical Engineering Communication
- Electrical Principles
- Electrical Principles
- Health and safety: Engineering
- Pipework systems
- Mechanical Engineering Principles L5

SVQ2 in Performing Engineering Operations SCQF L5 (part of):

- Working Efficiently and Effectively in Engineering
- Complying with statutory regulations and organisational safety requirements
- Using and interpreting engineering data and documentation
- Wiring and testing electrical equipment and circuits
- Forming and assembling electrical cable enclosure and support systems

A Foundation Apprenticeship is a work based learning apprenticeship, where you are expected to attend work placements including work shadowing, industry talks, industry visits and work related training.

WHAT OPPORTUNITIES WILL BE AVAILABLE TO ME WHEN I FINISH?

You might go on to do:

- Modern Apprenticeship
- Employment
- A full time higher education course, such as a Higher National Certificate (HNC), Higher National Diploma (HND) or degree. The level you might enter would depend on the level and relevance of your other qualifications

Williamwood High School National 4 (SCQF Level 4)

COURSE OUTLINE

The English National 4 course provides you with purposeful reading, writing, talking and listening. These activities enable you to improve and extend your communication skills and also help you to enjoy the English Language in prose, poetry and drama. The general aim of this course is to provide you with the opportunity to develop reading and listening skills in the contexts of literature, language and media. You will develop the skills needed to understand, analyse and evaluate straightforward texts. In addition, you will have the opportunity to develop talking and writing skills in familiar contexts along with the skills needed to create and produce straightforward texts in both written and oral forms.

PUPIL ELIGIBILITY

You must have: • English National 3

QUALIFICATION BREAKDOWN

English National 4 SCQF Level 4:

- Analysis and Evaluation
- Creation and Production
- Literacy
- English: Assignment

WHAT OPPORTUNITIES WILL BE AVAILABLE TO ME WHEN I FINISH?

Being able to read, speak and write well in English is the key to success in many aspects of life and work. Skills in English are important in many school/college subjects and essential in many occupations.

You might go on to do:

- A range of further education courses

Valuable resources available in school and online include:

- World of Work at www.myworldofwork.co.uk
- Planit at www.planitplus.net
- Workit at www.workit.info



National 5 (SCQF Level 5)

COURSE OUTLINE

The English National 5 course will give you the opportunity to learn how to read detailed texts in order to understand, analyse and evaluate in familiar contexts and develop the skills to listen to detailed language in order to understand, analyse and evaluate in familiar contexts.

In addition, you will learn how to develop and extend talking and writing skills in a wide range of contexts. You will develop the skills needed to create and produce texts in both written and oral forms.

PUPIL ELIGIBILITY

You must have: • English National 4

QUALIFICATION BREAKDOWN

English National 5 SCQF Level 5:

- An examination consisting of two papers:
- Paper 1 - Reading for Understanding, Analysis and Evaluation
- Paper 2 - Critical Reading encompassing Scottish Text and critical essay
- An internally assessed Spoken Language Unit
- A portfolio, which will contain two pieces of writing

WHAT OPPORTUNITIES WILL BE AVAILABLE TO ME WHEN I FINISH?

Being competent in English is the key to success in many aspects of life and work. Skills in English language and communication are important in many school, college and university courses and essential in many occupations.

You might go on to do:

- A range of further education courses



ENGLISH

Williamwood High School Higher (SCQF Level 6)

COURSE OUTLINE

The Higher English course will provide you with the opportunity to develop and extend reading and listening skills. Learners develop the skills needed to understand, analyse and evaluate a wide range of detailed and complex texts and spoken language in the contexts of literature, language and media.

In addition, you will learn how to develop and extend talking and writing skills in a wide range of contexts. You will develop the skills needed to create and produce detailed and complex texts in both written and oral forms.



Valuable resources available in school and online include:

- World of Work at www.myworldofwork.co.uk
- Planit at www.planitplus.net
- Workit at www.workit.info



PUPIL ELIGIBILITY

You must have:

- English National 5

QUALIFICATION BREAKDOWN

Higher English SCQF Level 6:

- An examination consisting of two papers:
- Reading for Understanding, Analysis and Evaluation
- Critical Reading encompassing Scottish Text and critical essay
- An internally assessed Spoken Language Unit
- A portfolio, which will contain two pieces of writing

WHAT OPPORTUNITIES WILL BE AVAILABLE TO ME WHEN I FINISH?

Being competent in English is the key to success in many aspects of life and work. Skills in English language and communication are important in many school, college and university courses and essential in many occupations.

You might go on to do:

- A range of further education courses
- A full time higher education course, such as degree

The level you might enter would depend on the level and relevance of your other qualifications

- Employment or training in Teaching, Law, Journalism or Law

Williamwood High School Advanced Higher (SCQF Level 7)

COURSE OUTLINE

The Advanced Higher English provides you with the opportunity to develop complex language skills which are essential for learning, life and work; and to develop their ability to interpret complex literary forms and to produce sophisticated language.

Advanced Higher English fosters an in-depth appreciation, of complex and sophisticated language, and of a wide range of literature and texts in different genres. This enables learners to access their own cultural heritage and history, as well as the culture and history of others. You will have the opportunity to personalise your study; choices enable you to encounter a wide range of texts in different genres and to produce sophisticated writing in chosen literary forms. Building on the four capacities, Advanced Higher English enables you to communicate, become a critical thinker, develop your cultural awareness, and be creative.

PUPIL ELIGIBILITY

You must have:

- A pass in Higher English at A or B level

If you have Higher at C it is strongly recommended that you upgrade at Higher.

QUALIFICATION BREAKDOWN

Advanced Higher English SCVQF Level 7:

- Analysis and Evaluation of Literary Texts
- Creation and Production
- A portfolio, which will contain two pieces of writing
- A project-dissertation

Valuable resources available in school and online include:

- World of Work at www.myworldofwork.co.uk
- Planit at www.planitplus.net
- Workit at www.workit.info



WHAT OPPORTUNITIES WILL BE AVAILABLE TO ME WHEN I FINISH?

Being competent in English is the key to success in many aspects of life and work. Skills in English language and communication are important in many school, college and university courses and essential in many occupations.

You might go on to do:

- A full time higher education course, such as degree.
The level you might enter would depend on the level and relevance of your other qualifications
- Employment or training in Teaching, Law, Journalism or Law



EVENTS

City of Glasgow College – City Campus **(SCQF Level 6)** ***Open to S6 Pupils***

COURSE OUTLINE

Are you interested in a career within the Events industry? The main aim of the National Progression Award in Events is to provide you with the practical and flexible introduction to the events industry. The course will allow you to develop the knowledge and skills needed to pursue employment and / or further study in the events sector. The City of Glasgow College will provide you with the skills to plan, organise and implement an event. You will learn to demonstrate the ability to carry out the costings and calculations related to an event, record and balance petty cash. In addition, you will learn the importance of marketing for event success.

ATTENDANCE PATTERN

Tuesday & Thursday (1.30pm to 4pm). The duration of the course is August to April.

PUPIL ELIGIBILITY

You must have:

- 3 passes at National 5, which should include Maths and English

You should also have a genuine interest in event organisation

QUALIFICATION BREAKDOWN

National Progression Award – SCQF Level 6

- Event Organisation
- Event Costing: An Introduction
- Introduction to Corporate Events
- Marketing in Travel and Tourism: An Introduction

Valuable resources available in school and online include:

- World of Work at www.myworldofwork.co.uk
- Planit at www.planitplus.net
- Workit at www.workit.info



WHAT OPPORTUNITIES WILL BE AVAILABLE TO ME WHEN I FINISH?

You might go on to do:

- Employment
- A full time higher education course, such as a Higher National Certificate (HNC), Higher National Diploma (HND) or degree in Events, International Events, Event Management and Business. The level you might enter would depend on the level and relevance of your other qualifications

FASHION AND TEXTILE TECHNOLOGY

Williamwood High School Higher (SCQF Level 6)

COURSE OUTLINE

The Higher Fashion and Textile Technology course is designed to enable you to develop knowledge; understanding and skills related to the technological processes involved in the fashion/textile industry. It is a practical based course, allowing you to develop skills, knowledge and understanding in fashion/textile contexts. You will apply knowledge of design and technological processes and a range of textile construction techniques to produce fashion/textile items.

PUPIL ELIGIBILITY

- National 5 Fashion and Textile Technology

Also suitable for students opting for this subject for the first time who have a keen interest in practical textiles

QUALIFICATION BREAKDOWN

Higher Fashion and Textile Technology SCQF Level 6:

- Textile Technologies
- Fashion/Textile Item Development
- Fashion and Textile Choices

Valuable resources available in school and online include:

- World of Work at www.myworldofwork.co.uk
- Planit at www.planitplus.net
- Workit at www.workit.info



WHAT OPPORTUNITIES WILL BE AVAILABLE TO ME WHEN I FINISH?

You might go on to do:

- A full time higher education course, such as a Higher National Certificate(HNC), Higher National Diploma (HND) in Fashion and Textiles, Bachelor of Arts (BA) in Fashion Management, Bachelor of Arts (BA) in International Fashion Branding or Bachelor of Arts (BA) in Costume Design and Construction. The level you might enter would depend on the level and relevance of your other qualifications
- Employment or training in fashion or textile industries



FASHION BRAND RETAILING

Glasgow Caledonian University
University Level 1 (SCQF Level 7)
Open to S6 Pupils

Valuable resources available in school and online include:

- World of Work at www.myworldofwork.co.uk
- Planit at www.planitplus.net
- Workit at www.workit.info



COURSE OUTLINE

Glasgow Caledonian University will offer you an opportunity to study fashion, brand and retail. Fashion Brand Retailing is an exciting and challenging option if you want to further your knowledge of fashion retailing, marketing and design, whilst developing your interpersonal and employability skills and learn university research and referencing techniques. An integral element of the Fashion Brand Retailing course is providing you with the opportunity to meet with personnel in the industry. This is achieved through guest speakers, along with visits to local retail head offices and stores. You will gain an insight into the various career paths available in the fashion retail sector.

ATTENDANCE PATTERN

Tuesday and Thursday afternoons (2pm to 4pm). The duration of the course is August to April.

Please note: You will travel independently by bus or train – travel tickets should be kept as you will be reimbursed by school.

PUPIL ELIGIBILITY

You must have:

- National 5 or equivalent in English
- Higher Art and Design is desirable, but not essential

QUALIFICATION BREAKDOWN

Fashion Brand Retailing SCQF Level 7:

There are two 'themes', each with a specific assessment that you must pass in order to receive a university award for a 20 credit module at Level 1 (equivalent to Advanced Higher Grade C).

- Theme 1: The Fashion Supply Chain
- Theme 2: The Fashion Demand Chain

WHAT OPPORTUNITIES WILL BE AVAILABLE TO ME WHEN I FINISH?

You might go on to do:

An undergraduate degree programme at GCU in the following areas:

- BA International Fashion Branding (Fashion Branding, marketing communications)
- BA Fashion Design with Business
- BA International Marketing

For more information on courses at GCU, please visit their website: www.gcu.ac.uk. You might also consider applying to courses at other universities. Fashion Brand Retailing will give you a good insight into university life and what is required of students at first year level.

FINANCIAL SERVICES

City of Glasgow College
Foundation Apprenticeship (SCQF Level 6)
Open to S5 Pupils for 2 Year Model /
S6 for 1 Year Model

COURSE OUTLINE

The aim of the Foundation Apprenticeship is to provide you with the opportunity to learn about competent occupational practices within the financial sector. You will learn more about workplace practices including industry specific skills.

ATTENDANCE PATTERN

2 Year Model:

Year 1: Tuesday and Thursday (pm) and 1 week in June (Mon - Fri 9.30am - 4.00pm)

Year 2: Thursday all day shared between college and work experience placement. 1 week in June (Mon - Fri 9.30am - 4.00pm)

Please note: Year 2 may be considered 2 of your S6 subjects and you will travel independently by bus or train – travel tickets should be kept as you will be reimbursed.

1 Year Model:

All day Tuesday at college/All day Thursday shared between college and work placement.

1 week in June (Mon - Fri 9.30am - 4.00pm)

Please note: Year 2 may be considered 2 of your S6 subjects and you will travel independently by bus or train – travel tickets should be kept as you will be reimbursed.

PUPIL ELIGIBILITY

Pupils intending to leave school at the end of S6 with minimum of one or more Highers in relevant subject areas and Nat 5's. Essential criteria as follows:

- Achieved or working towards Higher (A-C) in relevant subject areas – Economics, Accounts, Business etc. by end of S6

Please note: all pupils are required to be Credit Checked

Valuable resources available in school and online include:

- World of Work at www.myworldofwork.co.uk
- Planit at www.planitplus.net
- Workit at www.workit.info



QUALIFICATION BREAKDOWN

Foundation Apprenticeship in Financial Services
SCQF Level 6 - GL53 46:

National Progression Award (NPA) Financial Services

- Financial Services: An Introduction
- Financial Services: The Regulatory Framework
- Financial Services: Communication
- Financial Services: Promoting Positive Customer Relationships
- Financial Services: Personal Finance Awareness
- Work Placement

SVQ 3 Providing Financial Services

- Develop yourself to improve and maintain workplace competence in a financial services environment
- Develop productive working relationships in a financial services environment
- Ensure you comply with regulations in the financial services environment

A Foundation Apprenticeship is a work based learning apprenticeship, where you are expected to attend work placements including work shadowing, industry talks, industry visits and work related training.

WHAT OPPORTUNITIES WILL BE AVAILABLE TO ME WHEN I FINISH?

You might go on to do:

- Modern Apprenticeship • Employment
- A full time higher education course, such as a Higher National Certificate (HNC), Higher National Diploma (HND) or degree. The level you might enter would depend on the level and relevance of your other qualifications

FOOD AND DRINK TECHNOLOGIES

City of Glasgow College Foundation Apprenticeship (SCQF Level 6) *Open to S5 Pupils*

COURSE OUTLINE

The aim of the Foundation Apprenticeship is to introduce you to principles of food science and food safety, from developing marketable food products for today's consumer, to the care, legislation and processes involved in creating those products. You will learn in a hands-on way, both in a classroom and as a work placement.

ATTENDANCE PATTERN

Year 1: Tuesday and Thursday (pm) and 1 week in June (Mon - Fri 9.30am - 4.00pm)

Year 2: Monday, Tuesday, Wednesday (1.30pm to 4pm) and Thursday all day shared between college and work experience placement at an employer's workplace.

Please note: Year 2 may be considered 2 of your S6 subjects and you will travel independently by bus or train – travel tickets should be kept as you will be reimbursed.

PUPIL ELIGIBILITY

Pupils intending to leave school at the end of S6 with minimum of one or more Highers in relevant subject areas and Nat 5's. Essential criteria as follows:

- Achieved or working towards Higher (A-C) in relevant subject areas – English, Maths, Business (A-C) by end of S6

Valuable resources available in school and online include:

- World of Work at www.myworldofwork.co.uk
- Planit at www.planitplus.net
- Workit at www.workit.info



QUALIFICATION BREAKDOWN

Foundation Apprenticeship in Food and Drink Operations – GN26 46

National Progression Award in Food Manufacture – SCQF Level 6

- Food Manufacturing: Fundamentals of Food Science
- Food Manufacturing: Food Production
- Food Manufacturing: Commercial and Social Drivers
- Food Manufacturing: Sustainability
- REHIS Food Hygiene: Elementary
- REHIS Elementary Health and Safety Certificate

Part of SVQ in Food and Drink Operations (SCQF Level 6)

- Develop Productive Working Relationships with Colleagues
- Interpret and Communicate Information and Data in Food and Drink Operations
- Contribute to Continuous Improvement of Food Safety in Manufacture
- Develop a New Product in a Food Business
- Promote and Support Creative Thinking in a Food Business

A Foundation Apprenticeship is a work based learning apprenticeship, where you are expected to attend work placements including work shadowing, industry talks, industry visits and work related training.

WHAT OPPORTUNITIES WILL BE AVAILABLE TO ME WHEN I FINISH?

You might go on to do:

- Modern Apprenticeship • Employment
- A full time higher education course, such as a Higher National Certificate (HNC), Higher National Diploma (HND) or degree. The level you might enter would depend on the level and relevance of your other qualifications

Williamwood High School Higher (SCQF Level 6)

COURSE OUTLINE

This is a course that demands a high level of commitment from pupils. All four skills of Talking, Listening, Reading and Writing use materials which will be of interest to the pupils and will provide them with a good level of language competence. Homework will be plentiful and demanding of time and concentration, and will demand the preparation of grammar, reading comprehension, oral and essay work.

There are many themes to study drawn from four overarching areas: (Society, learning, employability and culture). The foreign language will be used in class as much as possible as the medium of instruction and discussion. Authentic videos and listening materials will be used for all class, group or individual activities. The course involves an intensive study of the structure of the language and therefore involves the regular and thorough learning of grammar.

PUPIL ELIGIBILITY

You must have: • National 5 French A or B

QUALIFICATION BREAKDOWN

Higher French SCQF Level 6:

- Unit Name: Understanding Language: Reading and Listening
- Unit Name: Using language: Talking and Writing

Final Exam: Including internally assessed talking performance.

WHAT OPPORTUNITIES WILL BE AVAILABLE TO ME WHEN I FINISH?

You might go on to do:

- Advanced Higher French

Valuable resources available in school and online include:

- World of Work at www.myworldofwork.co.uk
- Planit at www.planitplus.net
- Workit at www.workit.info



Advanced (SCQF Level 7)

COURSE OUTLINE

The Advanced Higher French course will allow you to develop further your language skills to a level of competence, whether or not you intend to follow a language course in higher or further education. The course provides you with the opportunity to further develop your skills of reading, listening, talking and writing. In addition it will contribute to your general education through consideration of intellectually stimulating topics. As far as possible, the foreign language is the medium of instruction and discussion. You will have access to a range of authentic materials including videos, newspapers and magazines.

PUPIL ELIGIBILITY

You must have: • Higher French at A or B

QUALIFICATION BREAKDOWN

Advanced Higher French SCQF Level 7:

- Unit Name: Understanding Language: Reading and Listening
- Unit Name: Using language: Talking and Writing
- Specialist Study

Final Exam: Including an externally assessed talking performance

WHAT OPPORTUNITIES WILL BE AVAILABLE TO ME WHEN I FINISH?

You might go on to do:

- Further study of French at Higher or Further education

GEOGRAPHY

Williamwood High School National 5 (SCQF Level 5)

COURSE OUTLINE

The aim of the Geography National 5 course is to develop your knowledge and understanding of Geography. You will have the opportunity to learn about people, how we live in, adapt to and change our planet. It is the science of the environment, related to people. Geography is part social science and part physical science.

PUPIL ELIGIBILITY

You must have:

- There are no formal entry requirements to pursue this course

QUALIFICATION BREAKDOWN

Geography National 5 SCQF Level 5:

- Physical Environment
- Human Environments
- Global Issues

WHAT OPPORTUNITIES WILL BE AVAILABLE TO ME WHEN I FINISH?

You might go on to do:

- Further study of geography at higher

Valuable resources available in school and online include:

- World of Work at www.myworldofwork.co.uk
- Planit at www.planitplus.net
- Workit at www.workit.info



Higher (SCQF Level 6)

COURSE OUTLINE

The purpose of Higher Geography is to develop your understanding of our changing world and its human and physical processes. Opportunities for practical activities, including fieldwork, will be encouraged, so that learners can interact with their environment.

The contexts for study are local, national, international and global. Geography draws on the social and natural sciences so it is at heart an interdisciplinary subject and has links with many other subjects. The study of Geography fosters positive life-long attitudes about environmental stewardship, sustainability and global citizenship.

PUPIL ELIGIBILITY

You must have:

- National 5 geography or another social subject

QUALIFICATION BREAKDOWN

Higher Geography SCQF Level 6:

- Geography: Physical Environments
- Geography: Human Environments
- Geography: Global Issues

WHAT OPPORTUNITIES WILL BE AVAILABLE TO ME WHEN I FINISH?

You might go on to do:

- Further study of a social subject at higher level or Advanced Higher Geography

GEOGRAPHY

Williamwood High School Advanced Higher (SCQF Level 6)

COURSE OUTLINE

The Advanced Higher Geography course will give you the opportunity to develop a range of cognitive skills and geographical skills. It encourages active learning which will include fieldwork, in the process of developing a high level of knowledge and understanding of geographical issues. You will acquire and apply relevant knowledge and evaluating, investigating, and analysing skills, at an appropriate level, in order to understand and explain geographical issues.

PUPIL ELIGIBILITY

You must have:

- Higher Geography at A or B level
- Higher English at B level or above

QUALIFICATION BREAKDOWN

Advanced Higher Geography SCQF Level 7:

- Geographical Skills
- Geographical Issues
- Skills, Knowledge and Understanding

Valuable resources available in school and online include:

- World of Work at www.myworldofwork.co.uk
- Planit at www.planitplus.net
- Workit at www.workit.info



WHAT OPPORTUNITIES WILL BE AVAILABLE TO ME WHEN I FINISH?

You might go on to do:

- A qualification in Advanced Higher Geography is excellent preparation for further education at college or university due to the independent nature of the course.



GRAPHIC COMMUNICATION

Williamwood High School National 5 (SCQF Level 5)

COURSE OUTLINE

The National 5 Graphic Design course will give you the opportunity to develop skills in graphic communication techniques, including the use of equipment, materials and software. You will extend and apply knowledge and understanding of graphic communication standards, protocols and conventions, where these apply. The course will help you gain an understanding of the impact of graphic communication technologies on our environment and society.

PUPIL ELIGIBILITY

You must have:

- There are no formal entry requirements to pursue this course

QUALIFICATION BREAKDOWN

National 5 Graphic Communication SCQF Level 5:

- 2D Graphic Communication
- 3D and Pictorial Graphic Communication

WHAT OPPORTUNITIES WILL BE AVAILABLE TO ME WHEN I FINISH?

You might go on to do:

- Further study of Graphic Communication at higher level

Valuable resources available in school and online include:

- World of Work at www.myworldofwork.co.uk
- Planit at www.planitplus.net
- Workit at www.workit.info



Higher (SCQF Level 6)

COURSE OUTLINE

The Higher Graphic Communication course will give you the opportunity to develop skills in graphic communication techniques, including the use of equipment, graphics, materials and software, creativity in the production of graphic communications to produce visual impact. You will gain skills in evaluating the effectiveness of graphics in communicating and an understanding of the impact of graphic communication technologies on our environment and society.

PUPIL ELIGIBILITY

You must have:

- Graphic Communication at National 5

QUALIFICATION BREAKDOWN

Higher Graphic Communication SCQF Level 6:

- 2D Graphic Communication Unit
- 3D and Pictorial Graphic Communication Unit

WHAT OPPORTUNITIES WILL BE AVAILABLE TO ME WHEN I FINISH?

You might go on to do:

- Further study of Graphic Communication at Advanced Higher level

GRAPHIC COMMUNICATION

Williamwood High School Advanced Higher (SCQF Level 7)

COURSE OUTLINE

Course Outline The Advanced Higher Graphic Communication course will allow you to gain an understanding, which directly supports graphic designing and communication activities in the various contexts of technical activities. It will enable you to experience graphic communication in technical detail through exploring the purposes, applications and audience requirements.

You will have an opportunity to develop an interest in the broad commercial and visual media use of graphics which might include presentation work, magazines, newspapers, informational manuals, static promotional work, website page layout, graphic design, advertising and point of sale, digital media, games, animation, expressive arts, electronic-based learning and advertising. Graphic design work will be iterative, with an expectation of review, evaluation, amendment and presentation, and with a deep understanding of the needs of the intended audience.

PUPIL ELIGIBILITY

You must have:

- Higher Graphic Communication

Valuable resources available in school and online include:

- World of Work at www.myworldofwork.co.uk
- Planit at www.planitplus.net
- Workit at www.workit.info



QUALIFICATION BREAKDOWN

Advanced Higher Graphic Communication SCQF Level 7:

- Technical Graphics
- Commercial and Visual Media Graphics

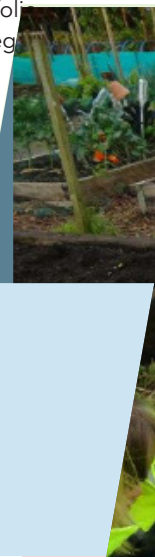
COURSE PROJECT

You will undertake an independent project where you will identify and select your own problem and will aim to solve it utilising skills in graphic communication. You will select either a technical graphics or visual media approach. The final project will showcase what you can do and will provide you with an extensive portfolio that can be utilised when applying for jobs or university/college courses.

WHAT OPPORTUNITIES WILL BE AVAILABLE TO ME WHEN I FINISH?

You might go on to do:

- Further study of Graphic Communication at Advanced Higher level



GROW, COOK AND EAT

West College Scotland National 1 (SCQF Level 1)

COURSE OUTLINE

West College Scotland will provide a broad, experiential introduction to the horticulture and hospitality sectors. You will learn about baking, how to select a product to bake, identify the ingredients required, and follow the correct sequence to make your chosen product using the correct tools safely and hygienically along with general horticulture duties. The programme ends with you harvesting vegetables and herbs in May and using these to prepare a lunch in June for invited guests and family.

Valuable resources available in school and online include:

- World of Work at www.myworldofwork.co.uk
- Planit at www.planitplus.net
- Workit at www.workit.info



ATTENDANCE PATTERN

Wednesday (10am to 12 noon). The duration of the course is August to June.

PUPIL ELIGIBILITY

You should:

- Have an interest in Horticulture
- Have an interest in Practical Bakery

VOCATIONAL OPTION BREAKDOWN

One SQA SCQF Level 1 Unit:

- Food Preparation: Baking

Gardening Skills – College Certificate

One SQA SCQF Level 1 Unit:

- Indoor Propagation - growing from seed, taking cuttings, feeding, watering and pricking out
- Outdoor Cultivation - ground preparation, weeding, planting out and watering
- Understanding of Health and Safety instructions and why they are important during activities
- Meeting personal targets while in a learning situation
- Completing allocated activities while supervised
- Selecting, cleaning and storing the appropriate materials used

WHAT OPPORTUNITIES WILL BE AVAILABLE TO ME WHEN I FINISH?

A practical based course covering a range of gardening skills used whilst growing a selection of vegetables and herbs

- Progression to horticultural related and personal and social education suite units



HAIR, BEAUTY AND MAKE-UP

Glasgow Clyde College (SCQF Level 5)

COURSE OUTLINE

Glasgow Clyde College will provide you with a broad, experiential introduction to hairdressing, beauty and current make up trends for daywear. Practical and theory sessions are designed to ensure you develop both vocational skills and the underpinning knowledge and understanding required for the hairdressing & beauty industry. Practical experience will include working on classmates to practice and perfect a variety of skills including current techniques in long hair and makeup, as well as correct skin preparation. Written work will include workbooks, short tests, projects, portfolio production and home study. Emphasis throughout all units is on the employability skills and attitudes which will help to prepare you for the workplace. This would enhance any other hair & beauty option.

ATTENDANCE PATTERN

Wednesday mornings (9:15am to 12 noon). The duration of the course is August to April.

PUPIL ELIGIBILITY

You must:

- Have a genuine interest in hair and beauty
- Have National 4 or equivalent in English
- Enjoy working as part of a team and have a creative flair

You are required to work on each other and must be prepared to get treatments applied to your hair and remove make up to have make up reapplied. You must demonstrate a level of maturity required for the course.

Valuable resources available in school and online include:

- World of Work at www.myworldofwork.co.uk
- Planit at www.planitplus.net
- Workit at www.workit.info



VOCATIONAL OPTION BREAKDOWN

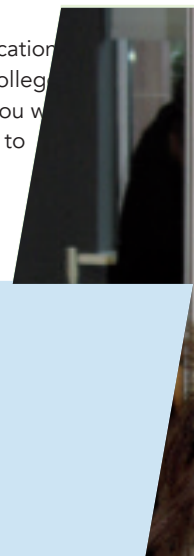
Please note you will be studying 2 Units at SCQF level 5, this is not a Group Award:

- Current Techniques in Long Hair: Basic
- Day and Corrective Make up

WHAT OPPORTUNITIES WILL BE AVAILABLE TO ME WHEN I FINISH?

You might go on to do:

- A Modern Apprenticeship, leading to a Scottish Vocational Qualification (SVQ) Levels 2 & 3 in Hairdressing. You would train on the job in a salon or barber's and off the job (usually one day a week) at a college or training centre.
- A full time National Certificate (NC) or National Qualification (NQ) course in Hairdressing or Beauty Care at a local college of further education usually over 2 years. Please note you will also need additional National qualifications in addition to these units.



HAIRDRESSING

Glasgow Clyde College Skills for Work 4 (SCQF Level 4)

COURSE OUTLINE

Glasgow Clyde College will provide you with a broad, experiential introduction to hairdressing. The focus is on experiencing a salon environment and the development of vocational skills, knowledge and understanding. Practical experience of general salon duties, reception skills, communication and customer care is included. Emphasis throughout all units is on employability skills and attitudes which will help prepare you for the workplace.

ATTENDANCE PATTERN

Tuesday and Thursday (1.30pm to 4pm). The duration of the course is August to April.

Valuable resources available in school and online include:

- World of Work at www.myworldofwork.co.uk
- Planit at www.planitplus.net
- Workit at www.workit.info



PUPIL ELIGIBILITY

You should:

- A genuine interest in hairdressing
- National 4 English
- Enjoy working as part of a team and have a creative flair

You are required to work on each other and must be prepared to get treatments applied to your hair. You must demonstrate a level of maturity required for the course.

QUALIFICATION BREAKDOWN

Skills for Work - Hairdressing SCQF level 4:

- Salon Awareness
- Working in the Salon
- Employability Skills
- Creativity including gents' personal presentation skills

WHAT OPPORTUNITIES WILL BE AVAILABLE TO ME WHEN I FINISH?

You might go on to do:

- A Modern Apprenticeship, leading to a Scottish Vocational Qualification (SVQ) Levels 2 & 3 in Hairdressing. You would train on the job in a salon or barber's and off the job (usually one day a week) at a college or training centre. Apprenticeships usually last for two years
- A full time National Certificate (NC) or National Qualification (NQ) course in Hairdressing or Beauty Care at a local college of further education usually over 2 years. Please note you will also need additional National qualifications in addition to this award. You should check the entry requirements on college website



HEALTH SECTOR

Williamwood High School Skills for Work – National 5 (24 SCQF Credit Points)

COURSE OUTLINE

The Health Sector course is aimed at learners who plan to work in the health sector. In addition, the focus on employability skills allows learners to develop the skills for employment outwith the health sector while the knowledge gained of the health sector is applicable to everyone.

PUPIL ELIGIBILITY

You must have:

- Entry to this course is at the discretion of the school.

QUALIFICATION BREAKDOWN

Health Sector – Skills for Work SCQF Level 5:

- Health Sector: Working in the Health Sector
- Health Sector: Life Science Industry and the Health Sector
- Health Sector: Improving Health and Well-being
- Health Sector: Physiology of the Cardiovascular System
- Health Sector: Working in Non Clinical Roles

Valuable resources available in school and online include:

- World of Work at www.myworldofwork.co.uk
- Planit at www.planitplus.net
- Workit at www.workit.info



COURSE ASSESSMENT

Assessment across the units of this course will allow learners to demonstrate, in the context of the health sector:

- Generic employability skills valued by employers in the health sector
- Knowledge and skills in relation to working in the health sector
- Skills in communication and working with others
- Investigation skills
- Presentation skills
- Evaluation skills

The assessments will be either written and/or recorded oral.

WHAT OPPORTUNITIES WILL BE AVAILABLE TO ME WHEN I FINISH?

What opportunities will be available to me when I finish?

You might go on to do:

- SVQ in Health and Social Care at Level 2
- National courses or units
- Further/Higher education
- Training/employment

HISTORY

Williamwood High School National 5 (SCQF Level 5)

COURSE OUTLINE

The National 5 History course will allow you to gain breadth and depth in your knowledge and understanding of the past through the study of Scottish, British, European and World contexts. You will have an opportunity to gain an insight into your own history, of society and the wider world in which you live. By examining the past, you can better understand your own community, country and the wider world.

PUPIL ELIGIBILITY

You must have:

- There are no formal entry requirements to pursue this course

QUALIFICATION BREAKDOWN

National 5 History SCQF Level 5:

- Historical Study: Scottish
- Historical Study: British
- Historical Study: European and World

WHAT OPPORTUNITIES WILL BE AVAILABLE TO ME WHEN I FINISH?

What opportunities will be available to me when I finish?

You might go on to do:

- Further study of history at higher level.
- Training/employment

Valuable resources available in school and online include:

- World of Work at www.myworldofwork.co.uk
- Planit at www.planitplus.net
- Workit at www.workit.info



Higher (SCQF Level 6)

COURSE OUTLINE

The Higher History course will open up the world of the past providing you with an insights into your history, of society and the wider world in which you live. By examining the past, you can better understand your own community, country and the wider world. You will gain knowledge and understanding of the past through the study of Scottish, British, European and world contexts.

PUPIL ELIGIBILITY

You must have:

- National 5 History or another social subject

QUALIFICATION BREAKDOWN

Higher History SCQF Level 6:

- Historical Study: British
- Historical Study: European and World
- Historical Study: Scottish

WHAT OPPORTUNITIES WILL BE AVAILABLE TO ME WHEN I FINISH?

You might go on to do:

- Further study of another social subject at Higher level or Advanced Higher History

HISTORY

Williamwood High School Advanced Higher (SCQF Level 7)

Valuable resources available in school and online include:

- World of Work at www.myworldofwork.co.uk
- Planit at www.planitplus.net
- Workit at www.workit.info



COURSE OUTLINE

The Advanced Higher History course is designed to add to the breadth and depth of your knowledge and understanding of historical concepts through study of chosen contexts. It also aims to develop your skills in evaluating events and sources and of investigating issues. It will provide the opportunity to integrate these skills in an extended piece of individual research.

PUPIL ELIGIBILITY

You must have:

- Higher pass in History at A or B level
- Higher English at B or above

QUALIFICATION BREAKDOWN

Advanced Higher History SCQF Level 7:

- Historical Study - Britain: at war, 1938-51
- Researching Historical Issues

WHAT OPPORTUNITIES WILL BE AVAILABLE TO ME WHEN I FINISH?

You might go on to do:

- A qualification in advanced higher history is excellent preparation for further education at college or university due to the independent nature of the course



HORTICULTURE

Glasgow Clyde College National Progression Award (SCQF Level 4)

COURSE OUTLINE

The National Progression Award (NPA) in Horticulture will provide you with the opportunity to develop the basic practical skills necessary to work in the Horticulture industry. Glasgow Clyde College will offer you the opportunity to learn skills in Horticulture, whilst working in the Horticulture Centre in their Langside Campus. This will provide you with the necessary skills to help you progress within the horticulture and landscaping sector.

PUPIL ELIGIBILITY

You should have:

- a genuine interest in Horticulture
- National 4 English and Maths

ATTENDANCE PATTERN

Tuesday and Thursday afternoons (1.30pm to 4pm). The duration of the course is August to April.

QUALIFICATION BREAKDOWN

National Progression Award in Horticulture - SCQF Level 4

Valuable resources available in school and online include:

- World of Work at www.myworldofwork.co.uk
- Planit at www.planitplus.net
- Workit at www.workit.info



- Allotment Gardening
- Plant Propagation
- Soft Landscaping

WHAT OPPORTUNITIES WILL BE AVAILABLE TO ME WHEN I FINISH?

You might go on to do:

- Level 5 Design and Construction
- Level 4 Horticulture
- Level 4 Landscape and Green keeping
- City and Guilds Horticulture

The level you might enter would depend on the level and relevance of your other qualifications.

HUMAN BODY STRUCTURE AND FUNCTION

Williamwood High School
University Level 2 (SCQF Level 8)
Open to S6 Pupils

Valuable resources available in school and online include:

- World of Work at www.myworldofwork.co.uk
- Planit at www.planitplus.net
- Workit at www.workit.info



COURSE OUTLINE

Human Body Structure and Function is a double credit unit at SCQF Level 8. As such it entails approx. 80 hours of teaching and 80 hours of study and equates to Year 2 of university biology degree programmes. The unit offers you the opportunity to extend your knowledge and develop an understanding of selected body systems and how the human body co-ordinates these systems to maintain homeostasis. In studying these systems, you will also discover what happens when things go wrong, covering conditions as diverse as hyperthyroidism, gigantism and coronary heart disease.

PUPIL ELIGIBILITY

You must have:

- Biology or Human Biology Higher
- You should have a genuine interest in human anatomy & physiology

QUALIFICATION BREAKDOWN

Please note you will be studying 2 Units at SCQF level 8, this is not a Group Award:

This course covers topics including:

- Structure & function of the skeletal system
- Reflex actions
- Function of the blood and heart
- Structure and function of respiratory system
- Structure and function of urinary system
- Structure and function of digestive system
- Practical laboratory experiments

WHAT OPPORTUNITIES WILL BE AVAILABLE TO ME WHEN I FINISH?

The unit would be an ideal stepping stone between secondary education and university programmes in medicine and dentistry, as well as to biology-based degree routes. Data handling, problem solving and experimental techniques are all developed alongside expanding knowledge on anatomy and physiology.

- The course will provide the necessary underpinning knowledge and skills to enable progression to further study of human physiological processes at HND level or to seek employment in science based industries.



HUMAN RESOURCES AND LAW

South Lanarkshire College National Progression Award (SCQF Level 6)

COURSE OUTLINE

The aim of the National Progression Award (NPA) in Human Resources and the Law is to provide you with the opportunity to develop knowledge and understanding of the fundamental legal aspects relevant to working in the context of human resources, to develop relevant core skills for Legal related occupations and for further study in law. Completion of the units will provide you with an understanding of the basic elements of both labour law and human rights.

ATTENDANCE PATTERN

Tuesday & Thursday afternoons (1:30pm to 4pm). The duration of the course is August to April.

PUPIL ELIGIBILITY

You must have:

- 3 passes at National 4, which should include English and Maths
- a genuine interest in Human Resources or Law

Valuable resources available in school and online include:

- World of Work at www.myworldofwork.co.uk
- Planit at www.planitplus.net
- Workit at www.workit.info



QUALIFICATION BREAKDOWN

NPA in Human Resources and the Law – SCQF level 6

Mandatory Units:

- Human Resources: Administration
- Law of Contract: An Introduction
- Employment Law: An Introduction – Scotland

WHAT OPPORTUNITIES WILL BE AVAILABLE TO ME WHEN I FINISH?

You might go on to do:

- Entry level employment opportunities within HR, Law or Marketing
- Other National Qualifications, National Certificates, Higher National Certificates, Higher National Diplomas and degrees in Legal Services, Business Management, Human Resource Management. The level you might enter would depend on the level and relevance of your other qualifications

HUMAN RESOURCE MANAGEMENT

South Lanarkshire College
Higher National Certificate (SCQF Level 7)
Open to S6 Pupils

COURSE OUTLINE

The aim of the Higher National Certificate is to provide you with an opportunity to develop your knowledge, skills and understanding of the technical areas of Human Resource Management in preparation for employment. The HNC course content will enhance your employment prospects and offer you a range of core and transferable skills essential within Human Resource Management.

ATTENDANCE PATTERN

Monday, Tuesday, Wednesday (1.30pm to 4pm) and Thursday all day (9.30am to 4pm). The duration of the course is August to June.

Please note, that unlike other options, this option is continuous attendance from August to June and may impact on other subjects attendance.

PUPIL ELIGIBILITY

You must have:

- 2 passes at Higher
- 3 National 5's, 1 of which should be English

QUALIFICATION BREAKDOWN

Higher National Certificate (HNC) Human Resource Management – SCQF Level 7

Mandatory Units:

- Human Resource Management: An Introduction
- Individual Employment Relations: Practice
- Individual Employment Relations: Law
- Interviewing

Valuable resources available in school and online include:

- World of Work at www.myworldofwork.co.uk
- Planit at www.planitplus.net
- Workit at www.workit.info



- Human Resource Management: The Business Context
- Continuing Professional Development: Introduction
- Recruitment, Selection and Induction
- Human Resource Management: Graded Unit 1

A range of Optional units are available such as:

- Human Resource Management: An Introduction to Finance
- Learning and Development: An Introduction
- Managing People and Organisations

WHAT OPPORTUNITIES WILL BE AVAILABLE TO ME WHEN I FINISH?

You might go on to:

- Higher National Diploma (HND) in Human Resource Management, Business, Accounting or Legal Studies
- Articulation agreements are in place with a range of Universities for progression into 2nd or 3rd Year degree programmes

Employment Opportunities:

The HNC/D in HRM prepare candidates for a wide range of employment opportunities in HRM such as:

- Employment relations
- Employee resourcing
- Training and Development

ICT HARDWARE SYSTEM SUPPORT

Glasgow Kelvin College
Foundation Apprenticeship (SCQF Level 6)
Open to S5 Pupils for 2 Year Model /
S6 for 1 Year Model

Valuable resources available in school and online include:

- World of Work at www.myworldofwork.co.uk
- Planit at www.planitplus.net
- Workit at www.workit.info



COURSE OUTLINE

The aim of the Foundation Apprenticeship is to introduce you to hardware/systems support roles within this sector and how hardware skills are utilised in the workplace.

ATTENDANCE PATTERN

2 Year Model – Glasgow Kelvin College

Year 1: Tuesday and Thursday (pm) and 1 week in June (Mon - Fri 9.30am - 4.00pm)

Year 2: Thursday all day shared between college and work experience placement and 1 week in June (Mon - Fri 9.30am - 4.00pm)

Please note: Year 2 may be considered 2 of your S6 subjects and you will travel independently by bus or train – travel tickets should be kept as you will be reimbursed.

1 Year Model – Glasgow Kelvin College

All day Tuesday at college/All day Thursday shared between college and work placement and 1 week in June (Mon - Fri 9.30am - 4.00pm)

Please note: this option may be considered 2 of your S6 subjects and you will travel independently by bus or train – travel tickets should be kept as you will be reimbursed.

PUPIL ELIGIBILITY

Pupils intending to leave school at the end of S6 with minimum of one or more Highers in relevant subject areas and Nat 5's. Essential criteria as follows:

- Achieved or working towards Higher (A-C) in relevant subject areas – Information Technology, Maths, Computing Science etc. by end of S6

QUALIFICATION BREAKDOWN

Foundation Apprenticeship in ICT Hardware System Support SCQF Level 6 - GL55 46:

Diploma for IT & Telecommunications Professionals

- Personal Effectiveness 2
- Health and Safety in IT & Telecom
- IT & Telecom System Operation 2
- Testing IT & Telecom Systems 2
- Working with IT & Telecoms Hardware and Equipment 1

NPA in Professional Computer Fundamentals

- Security Fundamentals
- Network Fundamentals
- Server Administration Fundamentals

A Foundation Apprenticeship is a work based learning apprenticeship, where you are expected to attend work placements including work shadowing, industry talks, industry visits and work related training.

WHAT OPPORTUNITIES WILL BE AVAILABLE TO ME WHEN I FINISH?

You might go on to do:

- Modern Apprenticeship
- Employment
- A full time higher education course, such as a Higher National Certificate (HNC), Higher National Diploma (HND) or degree. The level you might enter would depend on the level and relevance of your other qualifications

ICT SOFTWARE DEVELOPMENT

City of Glasgow Foundation Apprenticeship (SCQF Level 6)

***Open to S5 Pupils for 2 Year Model /
S6 for 1 Year Model***

COURSE OUTLINE

This two year Foundation Apprenticeship is delivered by Glasgow Clyde College and the City of Glasgow College who will introduce you to digital roles within this sector and how digital skills are utilised in the workplace. A Foundation Apprenticeship is a work based learning apprenticeship, where you are expected to attend work placements.

ATTENDANCE PATTERN

2 Year Model - City of Glasgow College

Year 1: Tuesday and Thursday (pm) and 1 week in June (Mon - Fri 9.30am - 4.00pm)

Year 2 proposed attendance: Thursday all day shared between college and work experience placement. 1 week in June

1 Year Model: City of Glasgow College

Tuesday and Thursday all day shared between college and work placement. 1 week in June (Mon - Fri 9.30am - 4.00pm)

Please note: this option may be considered 2 of your S6 subjects and you will travel independently by bus or train – travel tickets should be kept as you will be reimbursed

PUPIL ELIGIBILITY

Candidates intending to leave school at the end of S6 with minimum of one or more Highers Essential criteria as follows:

- Achieved or working towards Higher Maths (A-C) by end of S6

Valuable resources available in school and online include:

- World of Work at www.myworldofwork.co.uk
- Planit at www.planitplus.net
- Workit at www.workit.info



QUALIFICATION BREAKDOWN

Foundation Apprenticeship in ICT Software SCQF Level 6 - GL54 46:

Diploma for IT & Telecommunications Professionals

- Personal Effectiveness
- Health and Safety in IT & Telecom
- Investigating and Defining Customer Requirements for IT & Telecoms Systems
- Data Modelling

One optional unit from:

- Event Driven computer Programming
- Procedural Programming
- Object Oriented Computer Programming

NPA in Software Development

- Computing Applications: Development
- Computing: Authoring a Website
- Software Design and Development

A Foundation Apprenticeship is a work based learning apprenticeship, where you are expected to attend work placements including work shadowing, industry talks, industry visits and work related training.

WHAT OPPORTUNITIES WILL BE AVAILABLE TO ME WHEN I FINISH?

You might go on to do:

- Modern Apprenticeship • Employment
- A full time higher education course, such as a Higher National Certificate (HNC), Higher National Diploma (HND) or degree. The level you might enter would depend on the level and relevance of your other qualifications

INSPIRE YOUR FUTURE

Glasgow Clyde College (SCQF LEVEL 5)

COURSE OUTLINE

This course will help you to identify your career strengths based on your interests and abilities. You will experience a range of college tasters in the Faculty of Business, Creative and Digital Industries, Engineering, Computing and the Built Environment and Health /Wellbeing. These tasters aim to help you make informed choices about your future. You will work towards Leadership and Personal Development qualifications, build a portfolio of career skills in self-management, social intelligence and innovation and achieve digital badges to verify your skills achievements. This programme also aims to support your wellbeing which is also core to your future success.

ATTENDANCE PATTERN

Tuesday & Thursday afternoons (1.30pm to 4pm). The duration of the course is August to April.

PUPIL ELIGIBILITY

You must have:

- A genuine interest in trying a range of college options
- 3 passes at National 4, 1 of which should be English

Valuable resources available in school and online include:

- World of Work at www.myworldofwork.co.uk
- Planit at www.planitplus.net
- Workit at www.workit.info



VOCATIONAL OPTION BREAKDOWN

Please note, you will be studying units at SCQF Level 5, this is not a Group Award:

- Leadership Award
- Leadership: In Practice
- Personal Development: Self and Work

In addition to these units you will:

- Lead community, social and environmental projects
- Experience 3 / 4 college tasters of your choice

WHAT OPPORTUNITIES WILL BE AVAILABLE TO ME WHEN I FINISH?

This course will allow a taster of what to expect in further education. It will give you knowledge which could assist in getting employment or alternatively a full time position on a further education course.

INTRODUCTION TO BARISTA SKILLS

Vocational Facilities @ Barrhead High School (SCQF Level 5)

COURSE OUTLINE

~~Please note: this option may be considered 2 of your S6 subjects~~ will provide you with the opportunity to develop basic practical skills necessary to work in the coffee barista industry. Whether you intend to work as a barista, or are planning to run a cafe or coffee cart (or just are passionate about coffee), this is the course for you. You will participate in work experience and on successful completion of the course; you will have the opportunity to achieve your SCQF Level 5 Barista Skills award.

The course covers:

- Coffee Roasting and blend selection
- Learning to operate a coffee machine
- Maintenance and cleaning of coffee machine
- Setting the coffee grinder
- Perfecting espresso extraction times
- Tamping and packing coffee for shots
- Assessing the qualities of the coffee
- Milk steaming and how to make silky micro foam for the milk based coffees
- Making the coffees including espressos, lattés, cappuccinos, flat whites etc
- Latte Art
- General Barista skills
- Smoothies

It will give you the basic skills required to be a barista.

Valuable resources available in school and online include:

- World of Work at www.myworldofwork.co.uk
- Planit at www.planitplus.net
- Workit at www.workit.info



ATTENDANCE PATTERN

Friday morning (9:15am to 11am).

The duration of the course is August to May

PUPIL ELIGIBILITY

You must:

- be interested in learning barista skills as this is a practical course where you will learn to learn to operate a coffee machine in a commercial kitchen

QUALIFICATION BREAKDOWN

1 National Unit at SCQF level 5, this is not a group award

- Barista Skills

WHAT OPPORTUNITIES WILL BE AVAILABLE TO ME WHEN I FINISH?

You might go on to do:

- Other National Qualifications in Events or other Hospitality related subjects

INTRODUCTION TO FASHION DESIGN AND PRODUCTION

Glasgow Kelvin College SCQF Level 4

COURSE OUTLINE

The Introduction to Fashion Design and Production course is aimed at anyone interested in working in the fashion industry or studying fashion design at college or art school. Glasgow Kelvin College will provide you the skills which will prepare you to design and produce fashion garments exploring a range of techniques and allowing you the chance to make your own garments using a range of materials. You will also have the opportunity to learn introductory pattern drafting techniques and sewing techniques suitable for a range of items and designs.

ATTENDANCE PATTERN

Tuesday & Thursday afternoons (1.30pm to 4pm). The duration of the course is August to April.

PUPIL ELIGIBILITY

You must have:

- 3 passes at National 4, which should include English and Maths
- A keen interest in working towards a career in the fashion industry

Valuable resources available in school and online include:

- World of Work at www.myworldofwork.co.uk
- Planit at www.planitplus.net
- Workit at www.workit.info



VOCATIONAL OPTION BREAKDOWN

- Industrial Machine Sewing Skills: An Introduction
- Fashion Design – An Introduction
- Art & Design – Introduction to Surface Decoration

WHAT OPPORTUNITIES WILL BE AVAILABLE TO ME WHEN I FINISH?

You might go on to do:

- A one year full time course National Certificate (NC) or National Qualification (NQ) course, in a related area of study such as Fashion Design & Manufacture or Fashion: Design and Production with Retail at a college of further education

INTRODUCTION TO FOOD SERVICE SKILLS

City of Glasgow SCQF Level 3/4

COURSE OUTLINE

The Introduction to Food Service course will give you an opportunity to develop a range of employability skills for the Hospitality Industry; including food and drink service skills, food hygiene skills and team working skills. You will build self-confidence and gain an awareness of the opportunities for employment within the Hospitality Industry.

ATTENDANCE PATTERN

Thursday (9:30am to 2:45pm). The duration of the course is August to June. Please note, you will participate in one week work placement.

PUPIL ELIGIBILITY

You must:

- Have a keen interest in Hospitality

Valuable resources available in school and online include:

- World of Work at www.myworldofwork.co.uk
- Planit at www.planitplus.net
- Workit at www.workit.info



VOCATIONAL OPTION BREAKDOWN

REHIS – Elementary Food Hygiene Certificate

Introduction to Food Service Skills Certificate City of Glasgow College Award - SCQF Level 4:

Please note, you will be studying 3 units at SCQF Level 4, this is not a Group Award:

- Customer Care
- Local Tourist Attraction
- Introduction to Food Service Skills

WHAT OPPORTUNITIES WILL BE AVAILABLE TO ME WHEN I FINISH?

You might go on to do:

- Other National Qualifications in Events, Professional Cookery or other Hospitality related subjects
- Training in the hospitality industry. You would normally train on the job or off the job at college, restaurant kitchen, professional catering kitchen or training centre.

You will need to be 18 years of age or older for some of the jobs in this sector.

INTRODUCTION TO NURSING

Glasgow Clyde College SCQF Level 5

COURSE OUTLINE

The Introduction to Nursing programme will provide students with an introduction to the nursing profession which will allow them to examine a career in nursing or health care. The course consists of some practical sessions within the college skills lab carrying out basic nursing skills such as bed bathing and prevention of infection. The roles available within nursing will be explored and the responsibilities of a health care professional will be addressed. Candidates will be introduced to speakers from the health care sector and will attend clinical placement visits to meet with different areas within nursing. To support employment opportunities, certificates include Emergency First Aid, Health and Safety and an Introduction to Mental Health.

ATTENDANCE PATTERN

Tuesday & Thursday afternoons (1.30pm to 4pm).
The duration of the course is August to April.

PUPIL ELIGIBILITY

You must have:

- National 5 Maths and English

Valuable resources available in school and online include:

- World of Work at www.myworldofwork.co.uk
- Planit at www.planitplus.net
- Workit at www.workit.info



VOCATIONAL OPTION BREAKDOWN

Please note you will be studying 4 Units at SCQF level 5, this is not a Group Award:

- Basic Health Care Needs
- Prevention of Infection
- The Human Body
- Working In The Health Sector (Skills for Work)
- Emergency First Aid, Health & Safety and Introduction to Mental Health (in-house certificates)

WHAT OPPORTUNITIES WILL BE AVAILABLE TO ME WHEN I FINISH?

You might go on to do:

- NC Level 6 Health Care (Pre Nursing course with clinical placement on average 1 day per week). Candidate are required to have successfully completed the full Intro to Nursing course plus 3 credit passes at NAT 5 level.
- HNC Care and Administrative Practice (Equivalent to First Year Nursing). Candidates are required to have successfully completed the Introduction to Nursing plus have 2 additional Highers which must include English.

INTRODUCTION TO TEACHER EDUCATION

Strathclyde University *Open to S6 Pupils*

COURSE OUTLINE

This class provides you with a good introduction to the study of Teacher Education that will support you in your potential future role as a teacher. The on-campus programme for this class offers you the opportunity to work together to learn about children and the communities in which they live.

ATTENDANCE PATTERN

Tuesday & Thursday afternoons (1.30pm to 4pm). The duration of the course is August to December.

PUPIL ELIGIBILITY

You must have:

- A pass in Higher English at A or B level
- A pass in National 5 Maths at Grade C or above

VOCATIONAL OPTION BREAKDOWN

In-house certificate: Introduction to Teacher Education Certificate
University of Strathclyde

Valuable resources available in school and online include:

- World of Work at www.myworldofwork.co.uk
- Planit at www.planitplus.net
- Workit at www.workit.info



WHAT OPPORTUNITIES WILL BE AVAILABLE TO ME WHEN I FINISH?

You might go on to do:

- A full time higher education course in primary or secondary teacher, such as a Higher National Certificate (HNC), Higher National Diploma (HND) or degree. The level you might enter would depend on the level and relevance of your other qualifications



LEGAL SERVICES

Glasgow Clyde College National Progression Award (SCQF Level 6)

COURSE OUTLINE

The National Progression Award (NPA) in Legal Services has been developed with the purpose of providing you with knowledge and understanding of the role of the law; provide you with the opportunity to develop relevant skills for legal related occupations and further study and to prepare you for entry into related NC or HN programmes. This is a recognised and current Group Award in Legal Studies

ATTENDANCE PATTERN

Tuesday & Thursday afternoons (1.30pm to 4pm).
The duration of the course is August to April.

PUPIL ELIGIBILITY

You must have:

- 3 passes at National 5, 1 of which should be English

QUALIFICATION BREAKDOWN

National Progression Award in Legal Studies SCQF Level 6:

- Scots National Law: an Introduction
- Crime in Society
- Employment Law: An Introduction

Valuable resources available in school and online include:

- World of Work at www.myworldofwork.co.uk
- Planit at www.planitplus.net
- Workit at www.workit.info



WHAT OPPORTUNITIES WILL BE AVAILABLE TO ME WHEN I FINISH?

You might go on to do:

- Administrative support within private legal practice, the Crown Office, the Fiscal Service, commercial legal teams
- General court administration
- Personal injury claim handler
- Administrative support within private legal practice
- Administrative support within the Crown Office General court administration
- Personal injury claim handler

Williamwood High School
National 4/5 (SCQF Level 4/5)
Open to S6 Pupils

COURSE OUTLINE

The National 5 Mandarin is an 'accelerated' course and demands a high level of commitment. All four skills of Talking, Listening, Reading and Writing use materials which will be of interest to you and will provide you with a good level of language competence. Homework will be plentiful and demanding of time and concentration, and will demand the preparation of grammar, reading comprehension, oral and essay work. There are many themes to study drawn from four overarching areas: (Society, learning, employability and culture).

PUPIL ELIGIBILITY

You must have:

- National 5 French

Valuable resources available in school and online include:

- World of Work at www.myworldofwork.co.uk
- Planit at www.planitplus.net
- Workit at www.workit.info



QUALIFICATION BREAKDOWN

National 4/5 Mandarin SCQF Level 4/5:

- Understanding Language: Reading and Listening
- Using Language: Talking and Writing
- Final exam: Including internally assessed talking performance

WHAT OPPORTUNITIES WILL BE AVAILABLE TO ME WHEN I FINISH?

You might go on to do:

- Higher Mandarin

的	一	人	我
dé	yī	rén	wǒ
中	在	是	大
zhōng	zài	shì	dà
上	不	有	了
shàng	bù	yǒu	le
个	下	可	他
ge	xià	kě	tā
为	会	你	到
wéi	huì	nǐ	dào

MARITIME SKILLS

City of Glasgow College Skills for Work (SCQF Level 5)

COURSE OUTLINE

You will explore a variety and range of career opportunities — local, national and global, in the maritime sector, including commercial sea fishing, the Royal Navy, the Merchant Navy, inland waterways and marine leisure, ports and harbours. City of Glasgow College will introduce you to the operation of boats and equipment, including: boat handling, the use of ropes, wires and chains and effective anchoring, mooring and securing a vessel are tackled in practical situations. There's an introduction to marine navigation, where you will learn how to use a marine chart to plot position using standard marine instruments, and how to take account of the weather. You will learn the safety aspects of any job in the maritime sector, including: safe working practices on board ship, life-saving principles, basic first aid and basic fire safety. Basic engineering involved with small boats, such as pumping and steering mechanism, are reviewed and the routine care and maintenance of the engine and auxiliaries on a boat.

ATTENDANCE PATTERN

Tuesday and Thursday afternoons (1.30pm to 4pm).
The duration of the course is August to April.

PUPIL ELIGIBILITY

You must be working towards or have:

- National 5 in English, Maths and one other science

QUALIFICATION BREAKDOWN

Skills for Work: Maritime Skills SCQF Level 5:

- Seamanship: An Introduction
- Maritime Environment: An Introduction
- Small Boat Engineering
- Health and Safety in the Maritime Sector
- Employability Skills and Careers in the Maritime Sector

Valuable resources available in school and online include:

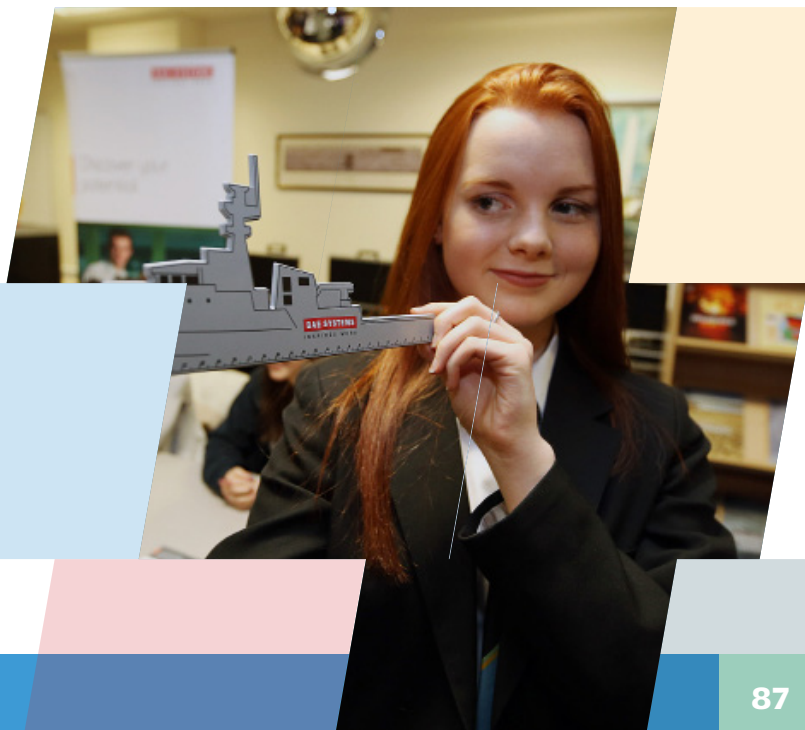
- World of Work at www.myworldofwork.co.uk
- Planit at www.planitplus.net
- Workit at www.workit.info



WHAT OPPORTUNITIES WILL BE AVAILABLE TO ME WHEN I FINISH?

You might go on to do:

- A full time higher education course, such as a National Certificate (NC), Higher National Certificate (HNC). The level you might enter would depend on the level and relevance of your other qualifications



MATHEMATICS

Williamwood High School National 5 (SCQF Level 5)

COURSE OUTLINE

The National 5 Mathematics course aims to build upon the skills learned within curriculum for excellence and extend candidates' mathematical thinking. You will be given the opportunity to develop problem solving skills and be able to apply your mathematical skills in a real life context. As well as preparing you for real life, emphasis is placed on developing an appreciation of the power of mathematical language and the efficiency of algorithms in preparation for the Higher course.

PUPIL ELIGIBILITY

You must have:

- National 4 Mathematics

QUALIFICATION BREAKDOWN

National 5 Mathematics SCQF Level 5:

- Expressions and Formulae
- Applications
- Relationships

Valuable resources available in school and online include:

- World of Work at www.myworldofwork.co.uk
- Planit at www.planitplus.net
- Workit at www.workit.info



WHAT OPPORTUNITIES WILL BE AVAILABLE TO ME WHEN I FINISH?

The skills and knowledge of mathematics gained at National 5 level is useful in many technological, vocational, scientific, social and environmental contexts.

You might go on to do:

- A full time higher education course, such as a Higher National Certificate (HNC), Higher National Diploma (HND) or degree. The level you might enter would depend on the level and relevance of your other qualifications

MATHEMATICS

Williamwood High School Higher (SCQF Level 6)

COURSE OUTLINE

The Higher Mathematics course will give you the opportunity to gain confidence in applying mathematical techniques proficiently, manipulating symbolic expressions and communicating with mathematical correctness in the solution of problems. In addition, you will develop an understanding of underlying processes. They will involve the ability to use these skills within mathematical contexts, such as in solving equations or working with indices, surds and logarithms.

PUPIL ELIGIBILITY

You must have:

- National 5 Mathematics at A or B level

QUALIFICATION BREAKDOWN

Higher Mathematics SCQF Level 6

- Expressions and Functions
- Relationships and Calculus
- Applications

WHAT OPPORTUNITIES WILL BE AVAILABLE TO ME WHEN I FINISH?

You might go on to do:

- A full time higher education course, such as a Higher National Certificate (HNC), Higher National Diploma (HND) or degree. The level you might enter would depend on the level and relevance of your other qualifications

Valuable resources available in school and online include:

- World of Work at www.myworldofwork.co.uk
- Planit at www.planitplus.net
- Workit at www.workit.info



Advanced Higher (SCQF Level 7)

COURSE OUTLINE

The Advanced Higher Mathematics course aims to build upon and extend your mathematical skills, knowledge and understanding in a way that recognises problem solving as an essential skill and enables them to integrate their knowledge of different aspects of the subject. You will have the opportunity to develop a range of mathematical skills and in addition, skills in calculus, algebra and areas such as number theory, complex numbers and matrices.

PUPIL ELIGIBILITY

You must have:

- Higher Mathematics at A or B level

QUALIFICATION BREAKDOWN

Advanced Higher Mathematics SCQF Level 6

- Methods in Algebra and Calculus
- Applications in Algebra and Calculus
- Geometry, Proof and Systems of Equations

WHAT OPPORTUNITIES WILL BE AVAILABLE TO ME WHEN I FINISH?

You might go on to do:

- A full time higher education course, such as a Higher National Diploma (HND) or degree. The level you might enter would depend on the level and relevance of your other qualifications.

MECHANICAL ENGINEERING

City of Glasgow College Foundation Apprenticeship (SCQF Level 6) *Open to S5 Pupils*

Valuable resources available in school and online include:

- World of Work at www.myworldofwork.co.uk
- Planit at www.planitplus.net
- Workit at www.workit.info



COURSE OUTLINE

The aim of the Foundation Apprenticeship is to provide you with the opportunity to develop the skills and knowledge to enter into a career in Engineering and the Advanced Manufacturing sector. You will gain vocational qualifications that combine sector-specific skills alongside the knowledge that underpins these skills in a workplace setting.

ATTENDANCE PATTERN

Year 1: Tuesday and Thursday (1:30pm to 4pm and 3 weeks in June (Mon - Fri 9.30am - 4.00pm).

Year 2: Tuesday and Thursday all day shared between college and work experience placement. 3 weeks in June (Mon - Fri 9.30am - 4.00pm).

Please note: Year 2 may be considered 2 of your S6 subjects and you will travel independently by bus or train – travel tickets should be kept as you will be reimbursed.

PUPIL ELIGIBILITY AND SELECTION

Pupils intending to leave school at the end of S6 with minimum of one or more Highers and Nat 5's. Essential criteria as follows:

- Achieved or working towards Higher Maths (A-C) by end of S6

QUALIFICATION BREAKDOWN

Foundation Apprenticeship in Mechanical Engineering SCQF Level 6 - G97J 46:

- NC in Mechanical Engineering SCQF Level 6
- 4 units of SVQ in Performing Engineering Operations at SCQF Level 6

A Foundation Apprenticeship is a work based learning apprenticeship, where you are expected to attend work placements including work shadowing, industry talks, industry visits and work related training.

WHAT OPPORTUNITIES WILL BE AVAILABLE TO ME WHEN I FINISH?

You might go on to do:

- Modern Apprenticeship
- Employment
- A full time higher education course, such as a Higher National Certificate (HNC), Higher National Diploma (HND) or degree.

The level you might enter would depend on the level and relevance of your other qualifications

MECHANICAL ENGINEERING

Glasgow Kelvin College
Higher National Certificate (SCQF Level 7)
Open to S6 Pupils

COURSE OUTLINE

Course Outline

The Higher National Certificate (HNC) in Mechanical Engineering is a unique opportunity to complete a recognised qualification within 1 year and providing you with the opportunity to progress to HND Level or University. This course can enhance your potential prospects for employment in engineering and create opportunities for aspiring engineers and technicians.

You will study the fundamental concepts of mechanical engineering including dynamics, statics, thermodynamics and fluid mechanics. You will gain skills in subjects such as CAD, engineering drawing and other industry essential subjects and you will learn within the classroom, CAD laboratory and a purpose built engineering laboratory.

ATTENDANCE PATTERN

Monday & Tuesday all day.

The duration of the course is August to June.

Please note, that unlike other options, this option is continuous attendance from August to June and may impact on other subjects attendance.

PUPIL ELIGIBILITY AND SELECTION

You must have, or are studying:

- Higher Maths or Higher Physics

Valuable resources available in school and online include:

- World of Work at www.myworldofwork.co.uk
- Planit at www.planitplus.net
- Workit at www.workit.info



QUALIFICATION BREAKDOWN

Higher National Certificate in Mechanical Engineering – SCQF level 7:

- Dynamics
- Thermofluids
- Pneumatics & Hydraulics
- Statics and Strength of Materials
- Materials Selection
- Engineering Mathematics 1
- Communication: Practical Skills
- Quality Management: An Introduction
- Engineering Principles
- Computer Aided Design
- Engineering Drawing

WHAT OPPORTUNITIES WILL BE AVAILABLE TO ME WHEN I FINISH?

You might go on to do:

- HND Mechanical Engineering
- University (Subject to university entry criteria)

Successful completion of the course will provide you with the knowledge and skills needed to seek employment as a junior technician or engineering apprentice.

MODERN STUDIES

Williamwood High School National 5 (SCQF Level 5)

COURSE OUTLINE

The aim of the National 5 Modern Studies course is to develop an understanding of contemporary political, social and international issues and to develop the skill of evaluating.

PUPIL ELIGIBILITY

There are no formal entry requirements to pursue this course

QUALIFICATION BREAKDOWN

National 5 Modern Studies SCQF Level 5:

- Democracy in the United Kingdom
- Social Issues in the UK
- World Powers

WHAT OPPORTUNITIES WILL BE AVAILABLE TO ME WHEN I FINISH?

You might go on to do:

- Further study of Modern Studies at Higher level

Valuable resources available in school and online include:

- World of Work at www.myworldofwork.co.uk
- Planit at www.planitplus.net
- Workit at www.workit.info



Higher (SCQF Level 6)

COURSE OUTLINE

The Higher Modern Studies course is designed to equip you with the skills necessary for today's society. By studying the Higher course it is hoped that you will improve your ability to understand, through research, discussion and debate, many contemporary issues within the UK and the wider world. The course requires candidates to study issues from within the UK and the wider world.

PUPIL ELIGIBILITY

You must have:

- National 5 Modern Studies or another social subject

QUALIFICATION BREAKDOWN

Higher Modern Studies SCQF Level 6:

- Democracy in the UK
- Social Issues in the UK
- International Issues

WHAT OPPORTUNITIES WILL BE AVAILABLE TO ME WHEN I FINISH?

You might go on to do:

- Further study of Modern Studies at Advanced Higher level or another Social Subject at Higher level

MODERN STUDIES

Williamwood High School Advanced Higher (SCQF Level 7)

COURSE OUTLINE

The Advanced Higher Modern Studies course allows you to build on your previous knowledge and understanding of political, social and international issues and the theories underpinning them. It also provides you with the opportunity to develop the critical skills of analysis, synthesis and evaluating and carry out your own independent research.

PUPIL ELIGIBILITY

You must have:

- A pass in Higher Modern Studies at A or B level
- A pass in Higher English at A or B level

QUALIFICATION BREAKDOWN

Advanced Higher Modern Studies SCQF Level 7:

- Modern Studies: Contemporary Issues
- Modern Studies: Researching Contemporary Issues

The above units will cover the following:

- Political and Social Issues Unit
- Power and Influence
- Living Political Ideas
- Political Structures
- Research Methods

COURSE PRACTICAL RESEARCH UNIT

You will carry out an investigation leading to the production of a dissertation based on a topic of your choice, from within the units studied at Higher or Advanced Higher. The research will be from a wide variety of sources, including primary research where appropriate.

Valuable resources available in school and online include:

- World of Work at www.myworldofwork.co.uk
- Planit at www.planitplus.net
- Workit at www.workit.info



WHAT OPPORTUNITIES WILL BE AVAILABLE TO ME WHEN I FINISH?

You might go on to do:

- A full time higher education course, such as a Higher National Diploma (HND) or degree. The level you might enter would depend on the level and relevance of your other qualifications



Williamwood High School National 5 (SCQF Level 5)

COURSE OUTLINE

The National 5 Music course is designed to provide a broad practical experience of performing and creating music and develop related knowledge and understanding of musical concepts and musical literacy. The course is designed to allow learners to work both individually and collaboratively with others and to make decisions and take responsibility for their own learning.

PUPIL ELIGIBILITY

You must have:

- The dedication to practise two instruments

QUALIFICATION BREAKDOWN

National 5 Music SCQF Level 5:

- Performing Skills Unit
- Composing Skills Unit
- Understanding Music Unit

Course Performance Assessment

You will be asked to prepare a performance programme on two instruments or one instrument/voice. This will be performed to an SQA Visiting Assessor.

WHAT OPPORTUNITIES WILL BE AVAILABLE TO ME WHEN I FINISH?

You might go on to do:

- Further study of Music at Higher level

Valuable resources available in school and online include:

- World of Work at www.myworldofwork.co.uk
- Planit at www.planitplus.net
- Workit at www.workit.info



Higher (SCQF Level 6)

COURSE OUTLINE

The Higher Music Course is designed to provide a broad practical experience of performing and creating music and develop related knowledge and understanding of musical concepts and musical literacy. The course is designed to allow learners to work both individually and collaboratively with others and to make decisions and take responsibility for their own learning. You will have the opportunity to apply your understanding of music in a creative way. You will experiment and explore using composing, arranging and improvisation techniques as appropriate. In addition, you will analyse how musicians and composers create music in different ways and how music styles are shaped by social and cultural influences.

PUPIL ELIGIBILITY

You must have: • National 5 Music

- The dedication to practise two instruments

QUALIFICATION BREAKDOWN

Higher Music SCQF Level 6:

- Performing Skills Unit • Composing Skills Unit
- Understanding Music Unit

Course Performance Assessment

You will be asked to prepare a performance programme on two instruments or one instrument and voice. This will be performed to an SQA Visiting Assessor

WHAT OPPORTUNITIES WILL BE AVAILABLE TO ME WHEN I FINISH?

You might go on to do:

- Further study of Music at Advanced Higher level

Williamwood High School Advanced Higher (SCQF Level 7)

Valuable resources available in school and online include:

- World of Work at www.myworldofwork.co.uk
- Planit at www.planitplus.net
- Workit at www.workit.info



COURSE OUTLINE

The Advanced Higher Music course is designed to provide a broad practical experience of performing and creating music and develop related knowledge and understanding of musical concepts and musical literacy. You will be given the opportunity, through practice and self-reflection, to develop your technical and musical performance skills. The course allows you to apply your understanding of music in a creative way. You will have the opportunity to experiment and explore using composing, arranging and improvisation techniques as appropriate.

PUPIL ELIGIBILITY

You must have:

- A pass in Higher Music at A or B level
- Grade 5 theory (recommended)
- The dedication to practise two instruments

QUALIFICATION BREAKDOWN

Advanced Higher Music SCQF Level 7:

- Performing Skills Unit
- Composing Skills Unit
- Understanding Music Unit

Course Performance Assessment

You will be asked to prepare a performance programme on two instruments or one instrument and voice. This will be performed to an SQA Visiting Assessor.

WHAT OPPORTUNITIES WILL BE AVAILABLE TO ME WHEN I FINISH?

You might go on to do:

- A full time higher education course, such as a Higher National Diploma (HND) or degree in Music. The level you might enter would depend on the level and relevance of your other qualifications
- A career in music



PAINTING AND DECORATING

South Lanarkshire College National Progression Award (SCQF Level 5)

Valuable resources available in school and online include:

- World of Work at www.myworldofwork.co.uk
- Planit at www.planitplus.net
- Workit at www.workit.info



COURSE OUTLINE

The National Progression Award (NPA) in Painting and Decorating will help you gain an insight into the trade and make informed choices regarding a career in painting and decorating. Training will be provided by South Lanarkshire College. The course will also provide you with the opportunity to develop employability skills and attitudes, which will help to prepare you for the workplace.

ATTENDANCE PATTERN

Tuesday and Thursday afternoons (1.30pm to 4pm). The duration of the course is August to April.

PUPIL ELIGIBILITY

- You must have:
- 3 passes at National 4, one of which should be Maths and English
- an interest in working in the construction industry

QUALIFICATION BREAKDOWN

National Progression Award in Painting and Decorating SCQF Level 5:

- Preparing and Painting Surfaces
- Decorative Painting
- Decorative Treatments
- Prepare and Hang Lining Paper
- Colour Practice: Painting and Decorating
- Paperhanging: Patterned Paper

WHAT OPPORTUNITIES WILL BE AVAILABLE TO ME WHEN I FINISH?

You might go on to do:

- A Modern Apprenticeship in painting and/or decorator. You would train on the job, on a building site or workshop, and off the job at a college or training centre.
- A one year full time course National Certificate (NC) or National Qualification (NQ) course, in a related area of study such as Construction Skills or Construction Crafts at a college of further education. The level you might enter would depend on the level and relevance of your other qualifications

PERSONAL AND SOCIAL DEVELOPMENT TRANSITIONS

City of Glasgow College SCQF Level 3/4

COURSE OUTLINE

To assist pupils with Asperger's Syndrome to make a successful transition from school to Further Education and training. You will develop communication skills, social skills, negotiation skills and confidence.

ATTENDANCE PATTERN

Thursday 9:30am to 12 Noon. The duration of the course is August to April.

PUPIL ELIGIBILITY

You must:

- Have a diagnosis of ASD
- Be working towards level 3-4 in English and Numeracy
- Want to continue your studies in further education

Please note: Interested pupils will attend a taster session and observed as part of a selection process.

Valuable resources available in school and online include:

- World of Work at www.myworldofwork.co.uk
- Planit at www.planitplus.net
- Workit at www.workit.info



VOCATIONAL OPTION BREAKDOWN

City of Glasgow College Award – SCFQ Level 3/4:

- Core Skills
- Communication
- Personal and Social Development
- Skills for Life and Work

WHAT OPPORTUNITIES WILL BE AVAILABLE TO ME WHEN I FINISH?

You might go on to do:

This course will allow a taste of what to expect in further education. It will give you knowledge which could assist in getting employment or alternatively a full time position on a further education course.

PHILOSOPHY

Williamwood High School Higher (SCQF Level 6)

COURSE OUTLINE

Higher Philosophy is a one year course for S6 students wishing to gain an insight into the world of philosophy. The Higher Philosophy course teaches a range of transferable skills in critical and analytical thinking that are applicable to a wide range of higher education courses and careers. As part of the Higher Philosophy course you will engage with the work and ideas of philosophers through the ages. The course is not merely concerned with learning about philosophy and philosophers however; it is about doing philosophy. You will engage in lively, stimulating and challenging discussion on various topics around the subject matter.

PUPIL ELIGIBILITY

- There are no formal entry requirements to pursue this course.

However, as a Sixth Year only course it is expected that you will already have completed Highers in other subjects.

QUALIFICATION BREAKDOWN

Higher Philosophy SCQF Level 6:

- Philosophy: Arguments in Action
- Philosophy: Knowledge and Doubt
- Philosophy: Moral Philosophy

Valuable resources available in school and online include:

- World of Work at www.myworldofwork.co.uk
- Planit at www.planitplus.net
- Workit at www.workit.info



WHAT OPPORTUNITIES WILL BE AVAILABLE TO ME WHEN I FINISH?

You might go on to do:

- A full time higher education course, such as a Higher National Certificate (HNC), Higher National Diploma (HND) or degree. The level you might enter would depend on the level and relevance of your other qualifications.



PHOTOGRAPHY

Williamwood High School – open to S6 Higher (SCQF Level 6)

COURSE OUTLINE

This Higher Photography course will provide you with the opportunity to gain a full Higher award in Photography. This option covers many facets of society including reportage, landscape, sports and wildlife. It will develop your creativity and will provide you with the opportunity to reflect upon and interpret the world around you. This option will prepare you to produce and evaluate media images.

PUPIL ELIGIBILITY

You must:

- Be in S6
- Have Higher Art and Design

QUALIFICATION BREAKDOWN

Higher Photography SCQF Level 6:

- Photography: Image Making
- Photography: Contextual Imagery

COURSE PROJECT

This course is assessed through submission of a project; and a final one hour exam. The project will have three sections, 'Research and Investigation'; 'Development and Production'; and 'Evaluation'.

Photography Project 77%

Written 23%

Valuable resources available in school and online include:

- World of Work at www.myworldofwork.co.uk
- Planit at www.planitplus.net
- Workit at www.workit.info



WHAT OPPORTUNITIES WILL BE AVAILABLE TO ME WHEN I FINISH?

You might go on to do:

- A one year full time National Certificate (NC) or National Qualification (NQ) course, in a related area of study such as photography or media studies and production at a college of further education
- A full time higher education course, such as a Higher National Certificate (HNC), Higher National Diploma (HND) or degree in photography or related areas of study. The level you might enter would depend on the level and relevance of your other qualifications. You would also need a portfolio of art work.

PHYSICAL EDUCATION

Williamwood High School Higher (SCQF Level 6)

Valuable resources available in school and online include:

- World of Work at www.myworldofwork.co.uk
- Planit at www.planitplus.net
- Workit at www.workit.info



COURSE OUTLINE

The Higher Physical Education course will provide you with the opportunity to build physical competencies, improve aspects of fitness, and maximise activity in and enjoyment of physical activities. You will gain skills to enhance movement and performance skills and to develop and apply knowledge and understanding to the analysis and evaluation of performance in physical activities. You will develop your thinking skills through planning, problem-solving and analysing performance.

You are required to contribute effectively in a range of contexts, and will develop the ability to provide explanations for, and reflect on, your own performances and those of others.

PUPIL ELIGIBILITY

You must have:

- National 5 Physical Education or other relevant prior experience in Physical Education
- A keen interest in physical activity and sport

QUALIFICATION BREAKDOWN

Higher Physical Education SCQF Level 6:

- Physical Education: Performance Skills
- Physical Education: Factors Impacting on Performance

COURSE ASSESSMENT

Assessment of this course is made up of the following two components:

- Performance
- Factors Impacting Performance (exam paper)

WHAT OPPORTUNITIES WILL BE AVAILABLE TO ME WHEN I FINISH?

You might go on to do:

- Further study at a college of further education undertaking Higher National Certificates (HNC), Higher National Diplomas (HND) and degrees in Sports Science, Physiotherapy, P.E. Teaching or Sports Management.

The level you might enter would depend on the level and relevance of your other qualifications



PHYSICAL EDUCATION

Williamwood High School Advanced Higher (SCQF Level 6)

Valuable resources available in school and online include:

- World of Work at www.myworldofwork.co.uk
- Planit at www.planitplus.net
- Workit at www.workit.info



COURSE OUTLINE

The Advanced Higher Physical Education course will give you the opportunity to research and critically evaluate factors which underpin and impact on performance, and use this knowledge to develop your own high-level performance and/or the performance of others. This course gives you the opportunity to explore key aspects of your performance. You are required to achieve a high level of performance by serious training and by developing disciplined and refined technique. The course aims to develop your knowledge and understanding of the nature and demands of quality performance and of factors which affect performance. The course will contribute to your personal and social development and will promote independent learning.

PUPIL ELIGIBILITY

You must have:

- A pass in Higher Physical Education at A or B level
- A pass in Higher English would be a considerable advantage in this course
- A keen interest in physical activity and sport and performing to a high level

QUALIFICATION BREAKDOWN

Advanced Higher Physical Education SCQF Level 7:

- Physical Education: Performance Skills
- Physical Education: Factors Impacting on Performance

COURSE ASSESSMENT

Assessment of this course is made up of the following two components:

- Performance
- Analysis and Development of Performance

WHAT OPPORTUNITIES WILL BE AVAILABLE TO ME WHEN I FINISH?

You might go on to do:

- Further study at a college of further education undertaking Higher National Diplomas (HND) and degrees in Sports Science, Physiotherapy, P.E. Teaching or Sports Management. The level you might enter would depend on the level and relevance of your other qualifications

PHYSICS

Williamwood High School National 5 (SCQF Level 5)

COURSE OUTLINE

The National 5 Physics course will give you the opportunity to develop your interest and enthusiasm for physics in a range of contexts. The skills of scientific inquiry and investigation are developed, throughout the course, by investigating the applications of physics. This will enable you to become a scientifically literate citizen, able to review the science-based claims you will meet.

PUPIL ELIGIBILITY

You must have:

- National 4 Physics
- or
- National 5 Science or Maths

QUALIFICATION BREAKDOWN

National 5 Physics (SCQF Level 5):

- Waves
- Radiation
- Dynamics
- Space
- Electricity
- Properties of Matter

COURSE ASSIGNMENT

The assignment has two stages:

- A research stage
- A report writing stage

WHAT OPPORTUNITIES WILL BE AVAILABLE TO ME WHEN I FINISH?

You might go on to do:

- Further study of Physics at Higher level

Valuable resources available in school and online include:

- World of Work at www.myworldofwork.co.uk
- Planit at www.planitplus.net
- Workit at www.workit.info



Higher (SCQF Level 6)

COURSE OUTLINE

The Higher Physics course will develop your curiosity, interest and enthusiasm for Physics in a range of contexts. The skills of scientific inquiry and investigation are developed throughout the course, and the relevance of physics is highlighted by the study of the applications of physics in everyday contexts.

PUPIL ELIGIBILITY

You must have:

- National 5 Physics
- National 5 Mathematics

QUALIFICATION BREAKDOWN

Higher Physics SCQF Level 5:

- Our Dynamic Universe
- Particles and Waves
- Electricity

COURSE ASSIGNMENT

The assignment has two stages:

- A research stage
- A report writing stage

WHAT OPPORTUNITIES WILL BE AVAILABLE TO ME WHEN I FINISH?

You might go on to do:

- Further study of Physics at Advanced Higher level
- Further study at a college of further education undertaking Higher National Diplomas (HND) and degrees in Science, Engineering, Medicine and Teaching. The level you might enter would depend on the level and relevance of your other qualifications



PHYSICS

Williamwood High School Advanced Higher (SCQF Level 6)

COURSE OUTLINE

The Advanced Higher Physics course will give you an opportunity to build on the knowledge and skills developed in the Higher physics course and to use your mathematical knowledge and skills to analyse and solve problems in real-life contexts. Through a deeper insight into the structure of the subject, the course reinforces and extends knowledge and understanding of the concepts of physics and develops skills in investigative practical work.

Valuable resources available in school and online include:

- World of Work at www.myworldofwork.co.uk
- Planit at www.planitplus.net
- Workit at www.workit.info



PUPIL ELIGIBILITY

You must have:

- Higher Physics
- Higher Mathematics

QUALIFICATION BREAKDOWN

Advanced Higher Physics SCQF Level 7:

- Rotational Motion and Astrophysics
- Quanta and Waves
- Electromagnetism

COURSE PROJECT

You are required to demonstrate aspects of challenge and application; you will apply skills of scientific inquiry, using related knowledge, to carry out a meaningful and appropriately challenging task in physics and communicate findings in a report.

WHAT OPPORTUNITIES WILL BE AVAILABLE TO ME WHEN I FINISH?

You might go on to do:

- Further study at a higher education undertaking Higher National Diplomas (HND) and degrees in Science, Engineering, Medicine and Teaching. The level you might enter would depend on the level and relevance of your other qualifications



POLICE STUDIES

South Lanarkshire College Higher National Certificate (SCQF Level 7/8)

COURSE OUTLINE

The Higher National Certificate (HNC) in Police Studies course has been developed in conjunction with Police Scotland. South Lanarkshire College will provide you the knowledge, skills and attitudes which will support you in making an application to Police Scotland. Some of the units studied will involve examining criminology, evaluating the Scottish legal system, developing your individual fitness, improving your team working skills and getting a high quality work placement.

ATTENDANCE PATTERN

Monday, Tuesday, Wednesday (1.30pm to 4pm) and Thursday all day (9.30am to 4pm). The duration of the course is August to June.

Please note, that unlike other options, this option is continuous attendance from August to June and may impact on other subjects attendance.

PUPIL ELIGIBILITY

You must have:

- 2 passes at Higher
- 3 other subjects at National 5, 1 of which should be English

QUALIFICATION BREAKDOWN

HNC in Police studies – SCQF Level 7/8

Mandatory Units:

- Scottish Legal System
- Sociology for Social Care Practice
- Personal Development Planning
- Exercise Principles and Programming
- Police Studies: Graded Unit 1
- I.T. in Business: Word Processing, Spreadsheets and Database: An Introduction
- Social Science: Research and Methodology

Valuable resources available in school and online include:

- World of Work at www.myworldofwork.co.uk
- Planit at www.planitplus.net
- Workit at www.workit.info



- Communication: Practical Skills
- Creating a Culture of Customer Care

A range of Optional units are available such as:

- Psychology for Social Care practice
- Scottish Criminal Law
- Interviewing

COURSE ASSESSMENT

Assessment of this course is made up of the following two components:

- Performance
- Analysis and Development of Performance

WHAT OPPORTUNITIES WILL BE AVAILABLE TO ME WHEN I FINISH?

You might go on to:

Undertake further Academic Qualifications such as:

- Progression to Higher Education with Universities recognising the HNC award as entry to first or second year Degree programmes in arrange of subjects such as: Law, Criminology. The level you might enter would depend on the level and relevance of your other qualifications

Employment Opportunities:

The HNC in Police Studies although designed with specific focus on the Police Service, develops generic skills and knowledge which can be applied to a number of other professional areas, such as:

- The Armed Forces
- Prison Service
- Private Security Firms
- Leisure
- Voluntary Work
- Fire Service
- Private Custodial Services
- Social Services
- Youth or Community Work

POLITICS

Williamwood High School Higher (SCQF Level 6)

Valuable resources available in school and online include:

- World of Work at www.myworldofwork.co.uk
- Planit at www.planitplus.net
- Workit at www.workit.info



COURSE OUTLINE

Higher Politics will encourage you to develop important attitudes, including: an open mind and respect for the values, beliefs and cultures of others; an openness to new thinking and ideas; and a sense of responsibility and global citizenship. Politics contributes to learners' understanding of the society in which you live and work by helping you to develop an understanding of political ideas and political systems in a UK and international context. This sense of political understanding will, in turn, assist you in participating as effective contributors to society and responsible citizens within that society, as well as giving you more individual confidence in their learning and working lives.

PUPIL ELIGIBILITY

You must have:

- National 5 Modern Studies and/or
- Higher Modern Studies and/or
- Higher in History/Geography

QUALIFICATION BREAKDOWN

Higher Politics SCQF Level 6

- Political Theory
- Political Systems
- Political Parties & Elections

WHAT OPPORTUNITIES WILL BE AVAILABLE TO ME WHEN I FINISH?

You might go on to study:

- Politics, Law, Social Sciences, Journalism, International Relations, Civil Service



POOL LIFEGUARDING

East Renfrewshire Culture and Leisure SCQF Level 5

COURSE OUTLINE

The National Pool Lifeguard Qualification is the most widely recognised lifeguard qualification in the UK & Ireland and is a requirement for most lifeguarding jobs in the country. East Renfrewshire Culture and Leisure will provide you with the opportunity to develop the knowledge and practical skills to work as a pool provide lifeguard and administer first aid as required, including CPR, AED and pool related rescue equipment.

ATTENDANCE PATTERN

Friday morning (8:45am to 10.15am). The duration of the course is August to April.

PUPIL ELIGIBILITY

You must:

- Be 16 years of age at the start of the course
- **Be able to meet the following criteria:**
 - Jump/dive into deep water
 - Swim 50 meters in less than 60 second
 - Swim 100 meters continuously on front and back in deep water
 - Tread water for 30 seconds
 - Surface dive to the floor of the pool
 - Climb out unaided without ladder/steps and where the pool design permits

QUALIFICATION BREAKDOWN

IQL Level 2 Award in Pool Lifeguarding, Intervention, Supervision and Rescue – SCQF Level 5

- The Lifeguard and the Law, Swimming Pool Supervision
- Intervention and Rescue and Emergency Action Plans
- Cardiopulmonary Resuscitation, AED and First Aid

Please note, this course is physically demanding and will include swimming to set times, lifting casualties and diving in to the deepest part of the swimming pool.

Valuable resources available in school and online include:

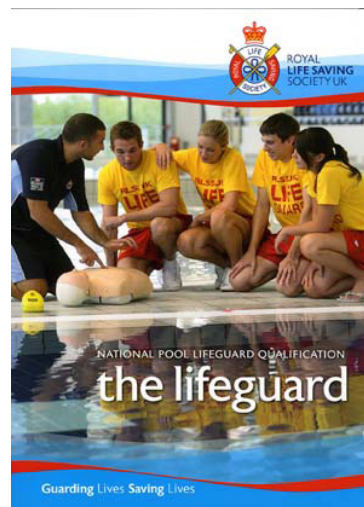
- World of Work at www.myworldofwork.co.uk
- Planit at www.planitplus.net
- Workit at www.workit.info



WHAT OPPORTUNITIES WILL BE AVAILABLE TO ME WHEN I FINISH?

You might go on to do:

- Employment as a Swimming pool attendant, recreation assistant, or beach lifeguard



PRACTICAL CAKE CRAFT

Williamwood High School National 5 (SCQF Level 5)

Valuable resources available in school and online include:

- World of Work at www.myworldofwork.co.uk
- Planit at www.planitplus.net
- Workit at www.workit.info



COURSE OUTLINE

The National 5 Hospitality: Practical Cake Craft Course enables you to develop technical and creative skills in cake baking and finishing while following safe and hygienic practices. You will study cake design and cake production and learn organisational skills to manage time and resources. In addition, you will be given the opportunity to develop finishing skills including modelling, piping, crimping, embossing and texturing to produce finished celebration cakes of a high standard.

PUPIL ELIGIBILITY

You must have:

- National 5 Hospitality and Practical Cookery
- National 5 Art & Design preferable
- Be self-motivated
- An independent learner

Open to senior pupils - Entry is at the discretion of the department.

QUALIFICATION BREAKDOWN

National 5 Practical Cake Craft SCQF Level 5

- Cake Baking
- Cake Finishing
- Final Practical Activity

WHAT OPPORTUNITIES WILL BE AVAILABLE TO ME WHEN I FINISH?

- The course enables pupils to develop manual dexterity which can be applied to roles in the hospitality industry in addition to other careers requiring fine motor skills such as medicine, dentistry or veterinary science

You might go on to do:

- Pupils can apply to study in hospitality and patisserie through Further Education



PRACTICAL COOKERY

Williamwood High School National 5 (SCQF Level 5)

Valuable resources available in school and online include:

- World of Work at www.myworldofwork.co.uk
- Planit at www.planitplus.net
- Workit at www.workit.info



COURSE OUTLINE

This course is designed to enable you to develop the practical skills and techniques which are required for food production in personal and hospitality situations. It is therefore a very useful course for a wide range of students and may provide a pathway to further training and/or employment in catering and hospitality.

PUPIL ELIGIBILITY

You must have:

- A keen interest in practical food.

QUALIFICATION BREAKDOWN

National 5 Practical Cookery SCQF Level 5:

- Organisational skills for cooking
- Cookery skills techniques and processes
- Understanding and using ingredients

Please note, this is a practical based course although there is a challenging written project and final written component to be completed.

WHAT OPPORTUNITIES WILL BE AVAILABLE TO ME WHEN I FINISH?

You might go on to do:

- Further study of Hospitality at college
- Opportunities in catering management



PRACTICAL WOODWORK

Williamwood High School National 5 (SCQF Level 5)

COURSE OUTLINE

The National 5 Practical Woodworking course is practical, exploratory and experiential in nature. It combines elements of technique and standard practice with elements of creativity. The course will provide you with the opportunity to gain a range of practical woodworking skills and to use a variety of tools, equipment and materials. It will allow you to plan activities through to the completion of a finished product in wood.

Valuable resources available in school and online include:

- World of Work at www.myworldofwork.co.uk
- Planit at www.planitplus.net
- Workit at www.workit.info



QUALIFICATION BREAKDOWN

National 5 Practical Woodworking SCQF Level 5:

- Practical Woodworking: Flat-frame Construction
- Practical Woodworking: Carcase Construction
- Practical Woodworking: Machining and Finishing

COURSE ASSESSMENT

Evidence will be required that you can produce flat-framed woodworking joints, carcase constructions and carry out machining and finishing assemblies to a given standard. Tasks will include some complex features. Evidence of knowledge and understanding will also be required.

WHAT OPPORTUNITIES WILL BE AVAILABLE TO ME WHEN I FINISH?

You might go on to do:

- Further study of National Certificate Group Awards (NCGAs)
- Further study of a range of other practical technological Courses at National 5, Skills for Work and sector-specific SQA qualifications.
- A Modern Apprenticeship in practical technology and related fields including: Joinery, Crafts, Construction, Manufacturing, Engineering, Theatre (Stage Production), Visual Arts and Dentistry (dexterity).



PROFESSIONAL COOKERY

Glasgow Clyde College - Vocational Facilities @ Barrhead High School National Progression Award (SCQF Level 4)

COURSE OUTLINE

The National Progression Award (NPA) in Professional Cookery will provide you with the opportunity to develop basic practical skills necessary to work in the catering industry. You will learn skills in professional cookery, whilst working in the training kitchens within the Hospitality department. You will be preparing and presenting food in a realistic working environment throughout the academic year.

ATTENDANCE PATTERN

Tuesday and Thursday afternoons (1.30pm to 4pm).
The duration of the course is August to April.

Valuable resources available in school and online include:

- World of Work at www.myworldofwork.co.uk
- Planit at www.planitplus.net
- Workit at www.workit.info



PUPIL ELIGIBILITY

You must have:

- National 4 English
- An interest in professional cookery as this is a practical course with participants learning to cook in a commercial kitchen

Please note: you will be handling meat.

QUALIFICATION BREAKDOWN

National Progression Award in Professional Cookery SCQF Level 4:

- Craft Baking: An Introduction
- Food Preparation Techniques: An Introduction
- Food Hygiene for the Hospitality Industry
- Cookery Processes: An Introduction
- Hospitality: Organisation of Practical Skills

Please note: you will be handling meat.

WHAT OPPORTUNITIES WILL BE AVAILABLE TO ME WHEN I FINISH?

You might go on to do:

- A full time National Certificate (NC) in Hospitality or Professional Cookery if you have other qualifications
- A Modern Apprenticeship in the hospitality industry, leading to a relevant Scottish Vocational Qualification (SVQ) Levels 2 and 3. You would normally train on the job or off the job at college, restaurant kitchen, professional catering kitchen or training centre. Apprenticeships usually last for two or three years

You will need to be 18 years of age or older for some of the jobs in this sector.



PROFESSIONAL THEATRE PREPARATION

Glasgow Clyde College National Progression Award (SCQF Level 6)

COURSE OUTLINE

The National Progression Award (NPA) in Professional Theatre Preparation offers you the opportunity to develop your skills in acting. This course will provide the knowledge, skills and resources that may be called upon when preparing for interviews and auditions, for entry to drama courses and/or the theatre or performing arts profession. This course is designed to develop an appreciation of all aspects of preparing for a career in professional theatre.

It will encourage you to take a detailed, focused and professional approach to preparing for a variety of potential experiences that may lead to professional training and/or employment in the performing arts industry.

You will explore and develop performance skills and develop a deeper insight into the type of work available in the performing arts sector. The course will help prepare you to audition for courses at drama schools or colleges.

ATTENDANCE PATTERN

Tuesday & Thursday (1.30pm to 4pm). The duration of the course is August to April.

PUPIL ELIGIBILITY

You must have:

- Previous experience of drama, theatre groups, acting clubs, Higher Drama or equivalent
- English National 5

Valuable resources available in school and online include:

- World of Work at www.myworldofwork.co.uk
- Planit at www.planitplus.net
- Workit at www.workit.info



QUALIFICATION BREAKDOWN

National Progression Award in Professional Theatre Preparation SCQF Level 6:

- Preparation for Audition
- Drama: Acting Skills

There is 1 mandatory unit, Preparation for Audition, which will prepare you for the audition process through developing a broad overview of the types of work available within the performing arts sector and preparing for, performing and evaluating your own audition performance. You will then work on the specific practical skill of acting. This course is highly practical in nature and there will be a balance of types of assessment, with an emphasis on practical assignments.

WHAT OPPORTUNITIES WILL BE AVAILABLE TO ME WHEN I FINISH?

You might go on to do:

- A full time higher education course, such as a Higher National Certificate (HNC), Higher National Diploma (HND) or degree in Drama.

The level you might enter would depend on the level and relevance of your other qualifications

- Employment or training

PSYCHOLOGY

Williamwood High School
Higher (SCQF Level 6)
Open to S6 Pupils

COURSE OUTLINE

This is a one year course for S6 students with an interest in psychology, social science, criminology or science. The Higher Psychology course will develop your understanding of psychology as the scientific study of the mind and behaviour. Psychology is a research-based subject, and it provides the opportunity to conduct practical research. This includes working with human participants in accordance with ethical standards.

Valuable resources available in school and online include:

- World of Work at www.myworldofwork.co.uk
- Planit at www.planitplus.net
- Workit at www.workit.info



PUPIL ELIGIBILITY

It is recommended that you have:

- A pass in Higher English
- National 5 Biology Course or relevant component Units
- National 5 Social studies or social sciences Courses at SCQF level 5 or relevant component Units

QUALIFICATION BREAKDOWN

Higher Psychology SCQF Level 6:

- Psychology: Individual Behaviour - Sleep & Dreams, Memory
- Psychology: Social Behaviour - Conformity, Obedience and Prejudice

WHAT OPPORTUNITIES WILL BE AVAILABLE TO ME WHEN I FINISH?

You might go on to do:

- HNC/D courses in social science at college or university degree courses in psychology, neuropsychology, arts, social sciences, sciences, criminology or business studies. The level you might enter would depend on the level and relevance of your other qualifications

Further information on psychology and the prospects it offers can also be found at www.bps.org.uk



QUANTITY SURVEYING

South Lanarkshire College
Higher National Certificate (SCQF Level 7)
Open to S6 Pupils

COURSE OUTLINE

The Higher National Certificate (HNC) in Quantity Surveying will provide you with the opportunity to develop knowledge and skills in areas such as building services in large buildings, construction technology: substructure and industrial/commercial superstructure, estimating, quantitative building studies: floors and roofs/ substructure and drainage and standard forms of construction contracts. South Lanarkshire College will prepare you with necessary academic skills to progress on to university degree pathway or to the workplace. The units cover many aspects within construction.

ATTENDANCE PATTERN

Monday and Tuesday all day. The duration of the course is August to June.

Please note, that unlike other options, this option is continuous attendance from August to June and may impact on other subjects attendance.

PUPIL ELIGIBILITY

You must have:

- 2 passes at Higher, 1 of which should be Maths or English
- An interest in working in the Building Service industry

Valuable resources available in school and online include:

- World of Work at www.myworldofwork.co.uk
- Planit at www.planitplus.net
- Workit at www.workit.info



QUALIFICATION BREAKDOWN

Higher National Certificate in Quantity Surveying – SCQF Level: 7

Mandatory Units:

- Substructure H72A 34
- Industrial commercial superstructure
- Building services in large building
- Building services: an introduction
- Quantitative building studies: floors and roofs
- Construction materials and specifications
- Estimating
- Standard form of construction contracts
- Domestic Construction
- CAD: 2D I
- Quantity Surveying: Graded Unit 1

Optional Units

- Domestic Construction
- Building services: an introduction

WHAT OPPORTUNITIES WILL BE AVAILABLE TO ME WHEN I FINISH?

You might go on to do:

- a full time higher education course, such as a Higher National Diploma (HND) or degree. The level you might enter would depend on the level and relevance of your other qualifications
- employment in quantity surveying, construction/ or building service engineering

REHIS ELEMENTARY COOKING SKILLS

Williamwood High School *Open to S6 Pupils*

COURSE OUTLINE

The aim of the course is to provide students with basic cooking skills that increases confidence, skills and knowledge

OUTCOMES

Increase basic food preparation skills

- Increase basic cooking and presentation skills
- Gain an awareness of food safety

Valuable resources available in school and online include:

- World of Work at www.myworldofwork.co.uk
- Planit at www.planitplus.net
- Workit at www.workit.info



- Gain an awareness of using safe and hygienic practices

PUPIL ELIGIBILITY

You must:

- Be in S6
- Have an interest in food and developing your cooking skills

VOCATIONAL OPTION BREAKDOWN

- REHIS – Elementary Food Hygiene Certificate

WHAT OPPORTUNITIES WILL BE AVAILABLE TO ME WHEN I FINISH?

This qualification will compliment your school portfolio.



RELIGIOUS, MORAL AND PHILOSOPHICAL STUDIES

Williamwood High School Higher (SCQF Level 6)

Valuable resources available in school and online include:

- World of Work at www.myworldofwork.co.uk
- Planit at www.planitplus.net
- Workit at www.workit.info



COURSE OUTLINE

Higher RMPS is a one year course for students wishing to further explore religious, moral and philosophical ideas. The Higher RMPS course teaches a range of content and skills that are highly relevant in the ever-changing multicultural society in which we live. Higher RMPS is a growing subject in Scotland and is recognised by universities as an excellent entrance qualification.

As part of the higher course you will examine religious ideas and practices, moral issues and dilemmas and some of life's big questions. You will have the opportunity to engage in lively, stimulating and challenging discussion on a range of RMPS topics.

PUPIL ELIGIBILITY

- There are no formal entry requirements to pursue this course. However, it is expected that you will have demonstrated good progress in RMPS in S4

QUALIFICATION BREAKDOWN

Higher Religious, Moral and Philosophical Studies
SCQF level 6:

- World Religion
- Morality and Belief
- Religious & Philosophical Questions

COURSE ASSIGNMENT

The assignment gives you the opportunity to investigate a religious, moral or philosophical question in greater depth.

WHAT OPPORTUNITIES WILL BE AVAILABLE TO ME WHEN I FINISH?

You might go on to do:

- Higher courses at college or university degree courses in Philosophy, Law, Medicine, Journalism, Literature, Media and Social Sciences.

The level you might enter would depend on the level and relevance of your other qualifications

RELIGIOUS, MORAL AND PHILOSOPHICAL STUDIES

Williamwood High School Advanced Higher (SCQF Level 7)

Valuable resources available in school and online include:

- World of Work at www.myworldofwork.co.uk
- Planit at www.planitplus.net
- Workit at www.workit.info



COURSE OUTLINE

Advanced Higher RMPS is a one year course for students wishing to further explore religious, moral and philosophical ideas. The Advanced Higher RMPS course follows on from Higher and teaches a range of content and skills that are highly relevant in the ever-changing multicultural society in which we live. Advanced RMPS is a growing subject in Scotland and is recognised by universities as an excellent entrance qualification. As part of the Advanced Higher course students will examine ideas and concepts from the philosophy of religion and will explore ethical issues arising from medical advancements. You will have the opportunity to engage in lively, stimulating and challenging discussion on a range of RMPS topics.

PUPIL ELIGIBILITY

- Higher RMPS

QUALIFICATION BREAKDOWN

Advanced Higher Religious, Moral and Philosophical Studies SCQF level 7:

- Philosophy of Religion
- Medical Ethics
- Dissertation

COURSE ASSIGNMENT

The course assessment consists of a dissertation. The dissertation gives you the opportunity to investigate a religious, moral or philosophical question in greater depth.

WHAT OPPORTUNITIES WILL BE AVAILABLE TO ME WHEN I FINISH?

You might go on to do:

- University degree courses in Philosophy, Law, Medicine, Journalism, Literature, Media and Social Sciences. The level you might enter would depend on the level and relevance of your other qualifications

SCIENTIFIC TECHNOLOGIES

Glasgow Clyde College
Foundation Apprenticeship (SCQF Level 6)
Open to S5 Pupils for 2 Year Model /
S6 for 1 Year Model

Valuable resources available in school and online include:

- World of Work at www.myworldofwork.co.uk
- Planit at www.planitplus.net
- Workit at www.workit.info



COURSE OUTLINE

The aim of the Foundation Apprenticeship is to provide you with the opportunity to gain knowledge and experience of the scientific sector. In Scotland there are many different career opportunities and career pathways, job roles in Life Sciences related operations include Laboratory Assistant, Technician trainee, Trainee Scientist, Technician, Scientist, and Technologist. These roles span across, industry, universities, schools, further education colleges and NHS.

ATTENDANCE PATTERN

2 Year Model

Year 1: Tuesday and Thursday (pm) and 1 week in June (Mon - Fri 9.30am - 4.00pm)

Year 2 proposed attendance: Tuesday (1:30pm to 4pm) and Thursday all day shared between college and work experience placement. 1 week in June (Mon - Fri 9.30am - 4.00pm)

Please note: Year 2 may be considered 2 of your S6 subjects and you will travel independently by bus or train – travel tickets should be kept as you will be reimbursed.

1 Year Model

All day Tuesday at college/All day Thursday shared between college and work placement. 1 week in June (Mon - Fri 9.30am - 4.00pm)

Please note: this option will be considered 2 of your S6 subjects and you will travel independently by bus or train – travel tickets should be kept as you will be reimbursed.

PUPIL ELIGIBILITY

Pupils intending to leave school at the end of S6 with minimum of one or more Highers incl. Chemistry and Nat 5's.

- Achieved or working towards Higher Chemistry (A-C) by end of S6

QUALIFICATION BREAKDOWN

Foundation Apprenticeship in Scientific Technologies – GN14 46

NPA in Scientific Technologies SCQF Level 6

- Laboratory Safety
- Mathematics for Science
- Fundamental Chemistry: An Introduction
- Experimental Procedures: Science

SVQ 3 Laboratory and Associated Technical Activities

- Follow Health and Safety Procedures for Scientific or Technical Activities
- Carry Out Simple Scientific or Technical Tests Using Manual Equipment
- Prepare Compounds and Solutions for Scientific or Technical Use

A Foundation Apprenticeship is a work based learning apprenticeship, where you are expected to attend work placements including work shadowing, industry talks, industry visits and work related training.

WHAT OPPORTUNITIES WILL BE AVAILABLE TO ME WHEN I FINISH?

You might go on to do:

- Modern Apprenticeship
- Employment
- A full time higher education course, such as a Higher National Certificate (HNC), Higher National Diploma (HND) or degree. The level you might enter would depend on the level and relevance of your other qualifications.

SCIENTIFIC TECHNOLOGIES

South Lanarkshire College National Progression Award (SCQF Level 6)

COURSE OUTLINE

The National Progression Award (NPA) in Scientific Technologies will provide you with the opportunity to gain knowledge and experience of the scientific sector. In Scotland there are many different career opportunities and career pathways, job roles in Life Sciences related operations include Laboratory Assistant, Technician trainee, Trainee Scientist, Technician, Scientist, and Technologist. These roles span across, industry, universities, schools, further education colleges and NHS.

ATTENDANCE PATTERN

Tuesday & Thursday afternoons (1:30pm to 4pm). The duration of the course is August to April.

PUPIL ELIGIBILITY

You must have:

- a minimum of 4 National 5's (one of which should be a science)

Valuable resources available in school and online include:

- World of Work at www.myworldofwork.co.uk
- Planit at www.planitplus.net
- Workit at www.workit.info



QUALIFICATION BREAKDOWN

National Progression Award in Scientific Technologies – SCQF Level 6:

- Laboratory Safety
- Mathematics for Science
- Fundamental Chemistry: An Introduction
- Experimental Procedures: Science

WHAT OPPORTUNITIES WILL BE AVAILABLE TO ME WHEN I FINISH?

You might go on to do:

- Modern Apprenticeship
- Employment
- A full time higher education course, such as a Higher National Certificate (HNC), Higher National Diploma (HND) or degree. The level you might enter would depend on the level and relevance of your other qualifications

SHOESTRING COOKERY

South Lanarkshire College

Valuable resources available in school and online include:

- World of Work at www.myworldofwork.co.uk
- Planit at www.planitplus.net
- Workit at www.workit.info



COURSE OUTLINE

Learn to budget, shop, prepare and present your own tasty meals on a shoestring budget. Working within a professional kitchen, you will learn the most economical and quick meals that you will be able to cook at home for fun. Great recipes, hints and professional tips to make the most of your food spending money. No more unhealthy take-aways or fast food – you will soon be able to prepare better, healthier and quicker meals than you ever thought possible!

ATTENDANCE PATTERN

Friday morning (9:15am to 11am). The duration of the course is August to April.

PUPIL ELIGIBILITY

You must:

- Be interested in cooking as this is a practical course where you will learn to cook in a commercial kitchen
- Be able to work independently in a commercial kitchen

Please note: you will be handling meat.

VOCATIONAL OPTION BREAKDOWN

Covers key areas including basic knife skills, food preparation and presentation. Subjects covered include cooking methods, making soups, stocks and sauces, presentation and menu planning.

WHAT OPPORTUNITIES WILL BE AVAILABLE TO ME WHEN I FINISH?

This qualification will compliment your school portfolio.



SOCIAL SERVICE AND HEALTHCARE

City of Glasgow College, Glasgow Clyde College or West College Scotland
Foundation Apprenticeship (SCQF Level 6)
Open to S5 Pupils for 2 Year Model / S6 for 1 Year Model

COURSE OUTLINE

The aim of the Foundation Apprenticeship is to provide you with the opportunity to gain skills and knowledge of the Social Services and Healthcare sector. Working in social services can be a challenging and rewarding career. Social service workers provide support and help to people who need it, helping them to live full and valued lives in the community.

ATTENDANCE PATTERN

2 Year Model – Glasgow Clyde College

Year 1: Tuesday and Thursday (pm) and 1 week in June (Mon - Fri 9.30am - 4.00pm).

Year 2: Thursday all day shared between college and work experience placement and 1 week in June (Mon - Fri 9.30am - 4.00pm)

Please note: Year 2 may be considered 2 of your S6 subjects and you will travel independently by bus or train – travel tickets should be kept as you will be reimbursed.

1 Year Model – City of Glasgow:

All day Tuesday and Thursday shared between college and work placement. 1 week in June (Mon - Fri 9.30am - 4.00pm)

1 Year Model - West College Scotland:

Tuesday, Wednesday, Thursday & Friday (1.30pm to 4pm) from August to November

2 afternoons at college (Tuesday & Thursday OR Wednesday & Friday 1.30pm to 4.00pm) and a full day work placement from November to June

Please note: this option may be considered 2 of your S6 subjects and you will travel independently by bus or train – travel tickets should be kept as you will be reimbursed.

Valuable resources available in school and online include:

- World of Work at www.myworldofwork.co.uk
- Planit at www.planitplus.net
- Workit at www.workit.info



PUPIL ELIGIBILITY

The City of Glasgow College and Glasgow Clyde College

Pupils intending to leave school at the end of S6 with minimum of one or more Highers incl. English and Nat 5's. Essential criteria as follows:

- Achieved or working towards Higher English (A-C) by end of S6

West College Scotland

You must have:

- A pass in Higher English by the end of S5

QUALIFICATION BREAKDOWN

Foundation Apprenticeship in Social Services Children and Healthcare (Adult Services) - GL52 46:

National Progression Award (NPA) in Social Services and Healthcare

- Social Services in Scotland
- Safeguarding People
- Communication in Care Relationships
- Safe Practice and Wellbeing in Social Services
- Human Development and Social Influences

SVQ Level 2 in Social Services and Healthcare (not full award)

- Support effective communication
- Support the health and safety of yourself and individuals
- Develop your own knowledge and practice
- Support the safeguarding of individuals

A Foundation Apprenticeship is a work based learning apprenticeship, where you are expected to attend work placements including work shadowing, industry talks, industry visits and work related training.

WHAT OPPORTUNITIES WILL BE AVAILABLE TO ME WHEN I FINISH?

You might go on to do:

- Modern Apprenticeship
- Employment
- A full time higher education course, such as a Higher National Certificate (HNC), Higher National Diploma (HND) or degree. The level you might enter would depend on the level and relevance of your other qualifications.

SOCIAL SERVICE CHILDREN AND YOUNG PEOPLE

**Glasgow Clyde College, Glasgow Kelvin College, City of Glasgow College or West College Scotland
Foundation Apprenticeship (SCQF Level 6)
Open to S5 Pupils for 2 Year Model /
S6 for 1 Year Model**

COURSE OUTLINE

The aim of the Foundation Apprenticeship is to provide you with the opportunity to gain skills and knowledge of the Social Services and Children and Young People sector. This includes working in nurseries; children and family centres; holiday play schemes, out of school care and working. Other services include working with children with disabilities and working with parents and families.

ATTENDANCE PATTERN

2 Year Model – Glasgow Clyde College

Year 1: Tuesday and Thursday (pm). 1 week in June (Mon - Fri 9.30am - 4.00pm)

Year 2: Thursday all day shared between college and work experience placement and 1 week in June (Mon - Fri 9.30am - 4.00pm)

2 Year Model – West College Scotland

Year 1: Tuesday and Thursday (pm). The duration of the course is August to June

Year 2 proposed attendance: Tuesday (1:30 to 4pm) at college. Thursday all day shared between college and work experience placement

Please note: Year 2 may be considered 2 of your S6 subjects and you will travel independently by bus or train – travel tickets should be kept as you will be reimbursed.

1 Year Model - Glasgow Kelvin & City of Glasgow

All day Tuesday and Thursday shared between college and work experience. 1 week in June (Mon-Fri 9:30am to 4:00pm)

1 Year Model – West College Scotland

August to December: two afternoons on a Monday, Tuesday, Wednesday or Thursday (1.30pm to 4pm).

January to June: Tuesday (1.30pm to 4pm)/ 1 full day work experience placement – day to be negotiated

Please note: This option may be considered 2 of your S6 subjects and you will travel independently by bus or train – travel tickets should be kept as you will be reimbursed.

PUPIL ELIGIBILITY

Glasgow Clyde College, Glasgow Kelvin College & City of Glasgow College

Pupils intending to leave school at the end of S6 with minimum of one or more Highers incl. English and Nat 5's. Essential criteria as follows:

- Achieved or working towards Higher English (A-C) by end of S6

Valuable resources available in school and online include:

- World of Work at www.myworldofwork.co.uk
- Planit at www.planitplus.net
- Workit at www.workit.info



West College Scotland

You must have:

- National 5 English • working towards Higher level
- You will be asked to provide a short personal statement on why you want to attend college and do this Foundation Apprenticeship and also attend an interview.

Please note: all pupils are required to be vetted by Disclosure Scotland as part of the Protecting Vulnerable Groups Scheme (PVG Scheme).

QUALIFICATION BREAKDOWN

Foundation Apprenticeship in Social Services Children and Young People - GL7A 46:

SVQ Level 2 in Social Services (Children and Young People) (Not full award)

- Support effective communication
- Support the health and safety of yourself and individuals
- Develop your own knowledge and practice
- Support the safeguarding of children

NPA in Social Services (Children and Young People)

- Safeguarding of Children and Young People
- Play for Children and Young People
- Communication with Children and Young People
- Development of Children and Young People
- Promote the Wellbeing and Safety of Children and Young People

A Foundation Apprenticeship is a work based learning apprenticeship, where you are expected to attend work placements including work shadowing, industry talks, industry visits and work related training.

WHAT OPPORTUNITIES WILL BE AVAILABLE TO ME WHEN I FINISH?

You might go on to do:

- Modern Apprenticeship • Employment
- A full time higher education course, such as a Higher National Certificate (HNC), Higher National Diploma (HND) or degree. The level you might enter would depend on the level and relevance of your other qualifications.

SOUND PRODUCTION

Glasgow Clyde College National Progression Award (SCQF Level 6)

COURSE OUTLINE

The National Progression Award (NPA) in Sound Production will offer you the opportunity to develop confidence in using equipment and software and be given opportunities to apply and develop your creative skills, enterprise, employability and planning whilst focusing on the music industry. You will also have the option to develop wider skills in a related area of the recorded music industry depending on your specific area of interest.

Valuable resources available in school and online include:

- World of Work at www.myworldofwork.co.uk
- Planit at www.planitplus.net
- Workit at www.workit.info



ATTENDANCE PATTERN

Tuesday and Thursday afternoons (1.30pm to 4pm).
The duration of the course is August to April.

PUPIL ELIGIBILITY

You must have:

- A genuine interest in music
- 2 subjects at National 5

QUALIFICATION BREAKDOWN

**National Progression Award in Sound Production
SCQF level 6:**

- Sound Engineering and Production
- Sound: Understanding the Signal Path
- Sound: Music Remixing

WHAT OPPORTUNITIES WILL BE AVAILABLE TO ME WHEN I FINISH?

You might go on to do:

- SCQF Level 6 National Certificate (NC) Sound Production or directly to Higher National Diploma (HND) Sound Production Year 1

Employment Routes

- Live/Theatre Sound Engineer/Technician
- Studio Engineer
- Sound Technician
- Audiology
- Games Development
- TV/Film Soundtrack and Foley engineers/technicians



SPANISH

Williamwood High School National 5 (SCQF Level 5) Open to S6 Pupils

COURSE OUTLINE

The National 5 Spanish is an 'accelerated' course and demands a high level of commitment. All four skills of Talking, Listening, Reading and Writing use materials which will be of interest to you and will provide you with a good level of language competence. Homework will be plentiful and demanding of time and concentration, and will demand the preparation of grammar, reading comprehension, oral and essay work. There are many themes to study drawn from four overarching areas: (Society, learning, employability and culture).

PUPIL ELIGIBILITY

You must have:

- National 5 French

QUALIFICATION BREAKDOWN

National 5 Spanish SCQF Level 5:

- Understanding Language: Reading and Listening
- Using Language: Talking and Writing

WHAT OPPORTUNITIES WILL BE AVAILABLE TO ME WHEN I FINISH?

You might go on to do:

- Higher Spanish
- Languages for Life and Work group award 4th Level

Valuable resources available in school and online include:

- World of Work at www.myworldofwork.co.uk
- Planit at www.planitplus.net
- Workit at www.workit.info



Higher (SCQF Level 6)

COURSE OUTLINE

The Higher Spanish is an 'accelerated' course for those joining in S6 and demands a high level of commitment. All four skills of Talking, Listening, Reading and Writing use materials which will be of interest to you and will provide you with a good level of language competence. Homework will be plentiful and demanding of time and concentration, and will demand the preparation of grammar, reading comprehension, oral and essay work. There are many themes to study drawn from four overarching areas: (Society, learning, employability and culture). The foreign language will be used in class as much as possible as the medium of instruction and discussion. Authentic videos and listening materials will be used for all class, group or individual activities. The course involves an intensive study of the structure of the language and therefore involves the regular and thorough learning of grammar.

PUPIL ELIGIBILITY

You must have:

- National 5 French or Spanish at A or B
- Higher French is recommended if you wish to complete the Spanish Higher course in one year

QUALIFICATION BREAKDOWN

Higher Spanish SCQF Level 6:

- Understanding Language: Reading and Listening
- Using language: Talking and Writing
- Final exam: Including internally assessed talking performance

WHAT OPPORTUNITIES WILL BE AVAILABLE TO ME WHEN I FINISH?

You might go on to do:

- Advanced Higher Spanish

Williamwood High School
Advanced Higher (SCQF Level 7)
Open to S6 Pupils

COURSE OUTLINE

The Advanced Higher Spanish course will allow you to develop further your language skills to a level of competence, whether or not you intend to follow a language course in higher or further education. The course provides you with the opportunity to further develop your reading, listening, talking and writing skills. In addition it will contribute to your general education through consideration of intellectually stimulating topics. As far as possible, the foreign language is the medium of instruction and discussion. You will have access to a range of authentic materials including videos, newspapers and magazines.



Valuable resources available in school and online include:

- World of Work at www.myworldofwork.co.uk
- Planit at www.planitplus.net
- Workit at www.workit.info



PUPIL ELIGIBILITY

You must have:

- Higher Spanish at A or B

QUALIFICATION BREAKDOWN

Advanced Higher Spanish SCQF Level 7:

- Understanding Language: Reading and Listening
- Using Language: Talking and Writing
- Specialist Study

WHAT OPPORTUNITIES WILL BE AVAILABLE TO ME WHEN I FINISH?

You might go on to do:

- Further study of Spanish at Higher or Further education

SPORTS LEADER

Williamwood High School SCQF Level 4

COURSE OUTLINE

Elective Period

All pupils in S5 have an elective period where they spend one period of the week in a subject area of their choice. Pupils choosing Physical Education are given the opportunity to complete one of the following nationally recognised qualifications:

- Sports Leadership Award – Level 2

This course teaches generic leadership skills such as organisation, planning, communication and teamwork through the medium of sport / dance. It is a fun and practical qualification with no final examination to sit. Sports Leaders will undertake a volunteering placement in the cluster primaries to support their award and will be directly involved in the organisation of the annual P7 Sports Festival.

Please choose Physical Education as your elective subject if you are interested in either of the above courses.

PUPIL ELIGIBILITY

You must have:

- A keen interest in leadership and working with others

QUALIFICATION BREAKDOWN

Sports Leadership Award – Level 2 SCQF Level 4

- Practical coursework
- Volunteering placement

Valuable resources available in school and online include:

- World of Work at www.myworldofwork.co.uk
- Planit at www.planitplus.net
- Workit at www.workit.info



COURSE ASSESSMENT

- Supervised volunteering placement
- Cluster sports festival

WHAT OPPORTUNITIES WILL BE AVAILABLE TO ME WHEN I FINISH?

You might go on to do:

- Physical Education Teaching
- Sports Development/Coaching
- Sports Management
- Primary Teaching
- Active Schools Co-ordinator



SPORT AND RECREATION

Glasgow Clyde College Skills for Work (SCQF Level 5)

COURSE OUTLINE

Are you interested in working within the sports sector and studying National 5 level? The main aim of the Skills for Work Sport and Recreation option is to develop skills that enable progression towards becoming a sports coach, fitness instructor, personal trainer, outdoor activities instructor and sports development officer? Glasgow Clyde College will provide you with the opportunity to improve your knowledge of exercise, fitness, health and wellbeing along with first aid skills. You will assist a qualified fitness instructor in teaching exercise and fitness sessions, understand the body and its response to exercise, understand the principles of training, recognise and be able to correct poor technique and plan and perform your own exercise programme.

ATTENDANCE PATTERN

Tuesday and Thursday afternoons (1.30pm to 4pm). The duration of the course is August to April.

PUPIL ELIGIBILITY

You must:

- Have 3 passes at National 5
- Be actively involved in sports or fitness

QUALIFICATION BREAKDOWN

Skills for work Sport and Recreation
SCQF level 5:

- Assist with a component of activity sessions
- Employment opportunities in the sport and recreation industry
- Assist with fitness programming
- Assist with daily centre duties

Valuable resources available in school and online include:

- World of Work at www.myworldofwork.co.uk
- Planit at www.planitplus.net
- Workit at www.workit.info



WHAT OPPORTUNITIES WILL BE AVAILABLE TO ME WHEN I FINISH?

You might go on to do:

- Successful completion of National 5 will benefit students wishing to gain entry to full time courses at NQ and HND level in Sport Coaching with the Development of Sport or Fitness, Health & Exercise



TELEVISION PRODUCTION

Glasgow Clyde College National Progression Award (SCQF Level 5)

COURSE OUTLINE

The National Progression Award (NPA) in Television Production will provide you with the techniques to plan and produce a short film. Using industry standard practices and high end equipment the course will offer you the knowledge and practical skills needed to gain an understanding of what is required within the television industry.

ATTENDANCE PATTERN

Tuesday and Thursday afternoons (1.30pm to 4pm). The duration of the course is August to April.

PUPIL ELIGIBILITY

You must have:

- English National 5
- 3 other subjects at National 5
- a genuine interest in television industry

Valuable resources available in school and online include:

- World of Work at www.myworldofwork.co.uk
- Planit at www.planitplus.net
- Workit at www.workit.info



QUALIFICATION BREAKDOWN

National Progression Award in Television Production SCQF level 5:

- Media: Directing a Single Camera Production
- Media: Basic Video Camera Operations
- Media: Sound Recording for Single Camera
- Media: Basic Video Editing

WHAT OPPORTUNITIES WILL BE AVAILABLE TO ME WHEN I FINISH?

- You might go on to do:
- A one-year full time NQ Television with Photography course at a Glasgow Clyde College. Combined with higher qualifications, you could progress to Higher National Diploma (HND) Creative Industries: Television

Further information on Television Production and the prospects it offers can also be found at Skillset. <http://creativeskillset.org>

UNIFORMED AND EMERGENCY ARMED SERVICES

Glasgow Kelvin College Skills for Work 4 (SCQF Level 4)

COURSE OUTLINE

The Uniformed and Emergency Services Course has been designed to provide you with opportunities to develop employability skills in the context of the uniformed and emergency services. The relevant uniformed services for this Course are: the Army, Merchant Navy, Royal Air Force, Royal Navy and Royal Marines. The course will provide different learning environments and experiences that include visits, visiting speakers, role play and other practical activities.

ATTENDANCE PATTERN

Tuesday and Thursday afternoons (1.30pm to 4pm).
The duration of the course is August to April.

PUPIL ELIGIBILITY

You must:

- Have an interest in Uniformed Services

Please note, much of the course is fitness orientated, therefore it is recommended that you are actively involved in sports or fitness.

Valuable resources available in school and online include:

- World of Work at www.myworldofwork.co.uk
- Planit at www.planitplus.net
- Workit at www.workit.info



QUALIFICATION BREAKDOWN

Skills for Work: Uniformed & Emergency Services SCQF Level 4:

- An Introduction
- Health Safety Fitness and Wellbeing
- Engaging with the Community; and
- Working in Teams

WHAT OPPORTUNITIES WILL BE AVAILABLE TO ME WHEN I FINISH?

You might go on to do:

- Employment opportunities after training such as, army soldier, army officer, ambulance technician, Emergency call handler, fire-fighter or immigration officer
- This can also lead to volunteering opportunities

UP IN THE AIR AND ON THE GROUND

City of Glasgow College (SCQF Level 4/5)

COURSE OUTLINE

This course brings together the world of travel, events and hospitality in an innovative and inspirational way. A practical course which will focus on developing a range of skills within the City of Glasgow College CITYAIR resource which is a simulated airline cabin and purpose built Airline Check in desks. You will develop a range of food and drink service skills from counter service to Barista training, plan and participate in events within a realistic live restaurant environment. To further enhance learning, visits are included to Tourist destinations within the city and Glasgow Airport.

ATTENDANCE PATTERN

Tuesday & Thursday afternoons (1.30pm to 4pm). The duration of the course is August to April.

PUPIL ELIGIBILITY

You must have:

- National 4 English and Maths
- 1 other subject at National 4

QUALIFICATION BREAKDOWN

Please note, you will be studying 5 units at SCQF Level 4/5, this is not a Group Award:

- Service of Food and Drink
- Introduction to Beveridge's
- Assist with an Event
- Event Theming
- Working as Air Cabin Crew
- Resort Representation: An Introduction

Valuable resources available in school and online include:

- World of Work at www.myworldofwork.co.uk
- Planit at www.planitplus.net
- Workit at www.workit.info



WHAT OPPORTUNITIES WILL BE AVAILABLE TO ME WHEN I FINISH?

You might go on to do:

- Employment and/or training in the hospitality, events and tourism related industry



YOUTH WORK

Glasgow Kelvin College National Progression Award (SCQF Level 6)

COURSE OUTLINE

This National Progression Award (NPA) in Theory and Approaches to Youth Work is a combination of Units taken from the NC: Working with Communities and the PDA: Youth Work programmes. It will provide you with an overview of how youth work evolved into its present format, along with practical classroom based group-work activities. Additionally, you will develop an understanding of communication and group work skills necessary to engage with young people in a range of settings.

ATTENDANCE PATTERN

Tuesday and Thursday afternoons (1.30pm to 4pm).
The duration of the course is August until April.

PUPIL ELIGIBILITY

You must have:

- National 5 English
- an interest in working with young people
- good verbal and written communication skills
- experience of working with young people, either in a paid or voluntary capacity

Please note, you will be required to participate in group work exercises including ice breakers.

Valuable resources available in school and online include:

- World of Work at www.myworldofwork.co.uk
- Planit at www.planitplus.net
- Workit at www.workit.info



QUALIFICATION BREAKDOWN

National Progression Award in Theory and Approaches to Youth Work – SCQF Level 6

- Youth Work - Engaging with Young People
- Working with Communities - Youth Work

WHAT OPPORTUNITIES WILL BE AVAILABLE TO ME WHEN I FINISH?

You might go on to do:

- A full time higher education course, such as a Higher National Certificate (HNC), Higher National Diploma (HND) or PDA. The level you might enter would depend on the level and relevance of your other qualifications

NOTES

[illegible]



WILLIAMWOOD HIGH SCHOOL

