

SCHOOLS DESIGN COMPETITION 2018-19

Your brief is to create an outfit based on the 'Intricate Insect' trend. 'Intricate Insect' is a Spring/Summer 2019 casual daywear story for High Street Retailers. Inspiration for design comes from the intricate insect wings and shapes combined with geometric shaped panelling. Simple base colours of white, silver and yellow are accentuated by interesting surface pattern beading and embroidery. See attached mood board for inspiration.

Students may submit more than one entry. Design presentations should be A4 size, on a fashion figure showing front and back, in colour with an indication of the appropriate materials to be used. You can use the attached templates to trace your figure then draw your design on your figure.

Your name, age, class, school address and school telephone number should be printed clearly on the back of **each** entry. Unfortunately, due to the volume of entries these cannot be returned.

The winning design entry will be made up by Glasgow Kelvin College. The **winning design** will be presented to the winner and modelled in the Glasgow Kelvin College Fashion Show in May 2019. The winner and a guest will be invited as V.I.P. guests.

Visit the Glasgow Kelvin College website or feel free to contact the following email address for further information on our Fashion courses:

amalcolm@glasgowkelvin.ac.uk

You can also follow **Glasgow Kelvin College- Fashion** on Facebook and **GKC-Fashion** on Instagram for behind the scenes snaps from the department!

The closing date for the competition is: **Friday 29TH March 2019.**

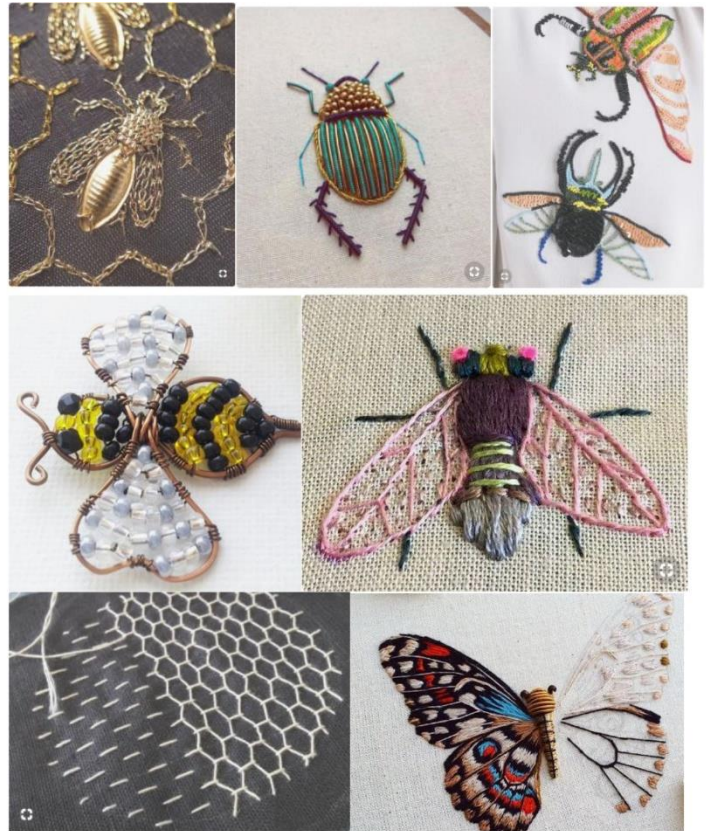
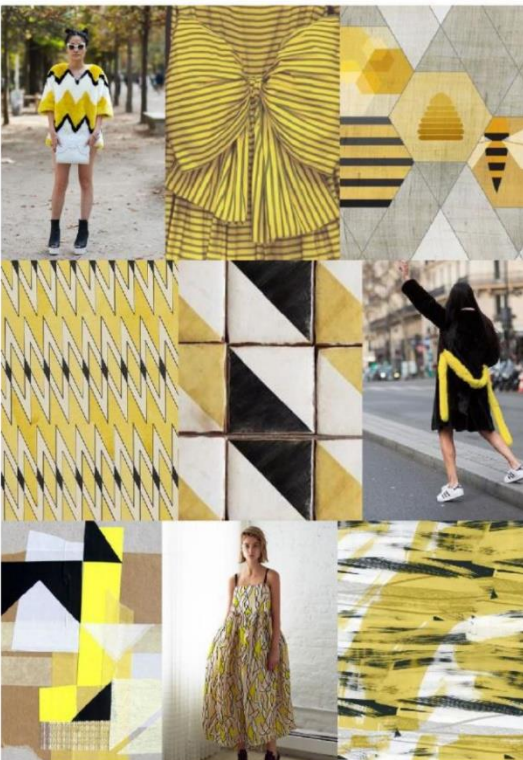
Entries should be addressed to:

Mrs Alison Malcolm – Schools Competition
Fashion Lecturer
Glasgow Kelvin College
123 Flemington Street
Glasgow
G21 4TD

BEE'S KNEES



QUEEN BEE



This theme is inspired by the intricate detail and colour of insect wings combined with geometric shaped panelling. Tailored daywear garments are fresh and crisp. Simple base colours of white silver and yellow are accentuated by interesting surface pattern beading and embroidery. Hints of metallic threads and texture can be incorporated as surface decoration and applique.

