



Parent and Family Guide for Going Back to School - Aug 2021

We are really looking forward to welcoming the children back to school full time on Wednesday 18th August. This guide is intended to support you with some of the key questions you may have about the return to school as we move beyond Level 0 of the Covid Protection levels. **New Primary 1 pupils should arrive for a 9:30am start on their first day.** For all other pupils, the school will open from the usual time of **8:45am** and the school day will begin at **9:00am**.

If you are unsure of any of these arrangements or details, please contact us at SchoolMail@st-marks.e-renfrew.sch.uk . School staff will be on hand at the start of term to direct the children and supervise a smooth start for all.

	Advice	Further information
Preparing for School	<p>Uniform All pupils will be expected to wear their school uniform as normal. Please remember to send your child dressed appropriately for the weather. You can read more about our school uniform on pages 12 and 13 of the school handbook.</p> <p>School Bags and Equipment Pupils are welcome to bring their own stationery for their own use. However, this is not essential, as children will be issued with resources by their teacher. School bags can be brought in as normal but pupils should avoid bringing in unnecessary toys or other items from home.</p> <p>PE and Outdoor Learning Once the term is underway, class teachers will advise what days children should bring PE kits or outdoor clothing. Your child is welcome to leave these in a bag on their cloakroom peg or in their locker (P6/7).</p>	<p>We are always keen to support our families and if we can be of any assistance in helping you to access uniform and clothing, please contact us via SchoolMail@st-marks.e-renfrew.sch.uk . Clothing grants (under certain conditions) are available to help with the cost of school uniforms. To apply please go to https://www.eastrenfrewshire.gov.uk/free-school-meals.</p> <p>Please remember to label all clothes and equipment with your child's name.</p>

	<p>Face Coverings As before the holidays, pupils are not required to wear face coverings in school.</p> <p>PLEASE DO NOT SEND CHILDREN TO SCHOOL WITH MOBILE PHONES. If you feel your child has to bring their mobile phone to school with them it will be collected in first thing and stored securely during the school day and returned to them as they leave.</p>	<p>Staff will wear face coverings for at least the first six weeks of term in communal areas of the school/ playground.</p>
Getting to School	<p>Current Scottish Government guidance advises that “<i>large gatherings of people should be avoided and physical distancing between adults and children of different groupings should be maintained... Parents should not enter school buildings unless required.</i>” Please note the revised entrance and exit arrangements at the end of this guide. The pictures and table outline which gates to drop off and collect your child from.</p> <p>Walking Pupils should walk, cycle or scoot to school where they are able to do so to help reduce the amount of traffic and congestion around each of our schools. Where parents are walking their children to school, you should drop your children and avoid spending time around the school wherever possible to reduce the amount of people in close proximity. Importantly, parents or other adults should not enter the school grounds at any point. This includes attempting to enter the school car park, which will be closed to ensure the health and safety of children entering the grounds. There are designated pick up points inside the playground beside the main gate for P1 and P2 parents to wait for their children. It is helpful for whoever is collecting your child to stand at these yellow triangles so that the children can easily see who is collecting them at the end of the day.</p>	<p>The gates and the school will be open for a soft start from 8:45am onwards and staff will be on hand to support and direct children to their designated entrances. The school day will start at 9am and children should not arrive any later than this. Primary 1 parents should bring their child at 9:30am on the first day of school. The school day will end at 3pm as usual, however, Primary 1 pupils will exit from 2:55pm to reduce congestion at the top gate.</p> <p>Parents are encouraged to support children in walking to and from school to reduce the pressure on busy roads around schools.</p> <p>Please do not stand waiting at the school gates and please remember to maintain social distancing with other families.</p> <p>When collecting pupils at the end of the day, please do not arrive too early as there is limited space for adults to congregate safely around the school.</p>

	<p>Driving Schools are already very busy, so where possible, please park away from the school and walk the short distance to drop off as part of our Park and Stride approach. The staff and visitor car park is closed to parents due to health and safety and access arrangements for pupils entering the school grounds. Parents who must drive their children to school should park nearby and show consideration for our neighbours, avoiding double parking or blocking access to houses and driveways.</p> <p>Public Transport For pupils using public transport to get to school, they will be required to adhere to ongoing rules for travel. However, children under 12 are no longer required to wear face coverings.</p>	<p>Please be mindful of other road users and residents when dropping off and picking up children by car.</p> <p>A new car park area is being developed on the site of the old Arthurlie Nursery. Further information will be shared about this area on completion of the work.</p>
During the School Day	<p>Assemblies and Gatherings Schools will continue to limit large gatherings of pupils for at least the first six weeks of term.</p> <p>Intervals Class bubbles are no longer required. However, each stage in the school will continue to rotate through separate zones in the playground to allow fair access to play equipment and resources (For example: Multi Use Games Area/ Loose parts play materials). Lunch sittings will be staggered.</p> <p>Drama, Music, PE and Dance Children and young people can now engage in all drama, music, PE and dance activity in schools, indoors and outdoors. This includes those children who access instrumental music tuition.</p>	<p>We have postponed our planned 60th anniversary mass from September until such times as we can gather as a whole school community to celebrate this special occasion. We will share the re-arranged date and arrangements in due course.</p> <p>Due to the design of our school grounds, our pupils are already well versed in playing in certain parts of the school on different days and weeks (e.g. front and back playground/ Multi Use Games Area). Teachers and Support Staff will explain the new zones to children on their return.</p>

	<p>Outdoor Learning There will be a continuing emphasis on the use of the outdoors for learning. Children are entitled to daily contact with nature and weekly outdoor learning sessions. More information and plans for outdoor learning will be communicated in the new term.</p> <p>Water Coolers Children should bring a full water bottle to school with them. If they require to refill it, water coolers will be available to use at break or lunchtime for refills. Pupils should look to practise good hand hygiene before and after use of the coolers.</p>	
Lunchtime	<p>School Lunches We will have continue to have separate sittings for lunches in the school hall</p> <p>Free School Meals All P1-P4s and those entitled to free school meals will continue to receive these in school.</p> <p>Packed Lunches Pupils will be able to continue to bring in their own food to eat in school if they wish to do so. <i>Please remember children should not bring food containing nuts.</i></p> <p>Out of School for Lunch Pupils will be able to continue to go home for lunch in line with existing arrangements.</p>	<p>If you think your child may be eligible for free school meals, please visit https://www.eastrenfrewshire.gov.uk/free-school-meals.</p> <p>Primary 5 and 6 pupils will be able to access Free School Meals from January 2022.</p>
After School	<p>School Clubs As with last term, we are able to run after school clubs both indoors and outdoors. We will be in touch with further information in the new term.</p> <p>Access to the School Building There is no access to the school building for parents outside of school hours. If you wish to speak with your child's teacher, you</p>	

	should phone the school in the first instance to make an appointment.	
Hygiene	<p>Hand Hygiene All staff will continue to encourage good hand hygiene amongst pupils, with pupils being expected to wash their hands on entering the classroom.</p>	Hand sanitiser will be available at entrances to the school. In classrooms, pupils will be able to use soap and water to clean their hands. Where this isn't available, hand sanitiser will be made available.
What if my child has COVID symptoms?	<ul style="list-style-type: none"> • Please be vigilant for symptoms of COVID-19. If your child develops any symptoms of COVID-19 they must not attend school. They should stay at home, self-isolate and get tested for COVID-19. Find out more on NHS Inform. • All other household members of your child (including yourself) must also stay at home and follow the latest guidance, which can be found on NHS Inform. In the event of a positive result, Test and Protect will contact you to provide tailored advice on what to do. • Book a test at NHS Inform for your nearest COVID-19 test site. There are drive-through, walk-through, and mobile testing units across Scotland which are open from 8-am until 8pm, 7 days a week. A full list of sites can be found at Gov.Scot. Or you can order a home PCR test kit online, or by calling 119. A test will then be delivered to your home. To return you can either drop the test at your nearest priority post box, or if you are unable to go out, you can also call 119 to book a courier collection from your home. <p>In School If your child develops symptoms when in school, you will be requested to collect them as soon as possible and take them home. You should, as above, follow the guidance on NHS Inform.</p>	<p>Please see Public Health letter for full details on changes to Covid protocols in relation to schools.</p> <p>If your child develops symptoms in school, they will be accommodated and supervised in an identified room within the school until they are collected. These rooms have been specifically set up with appropriate measures to reduce transmission.</p>

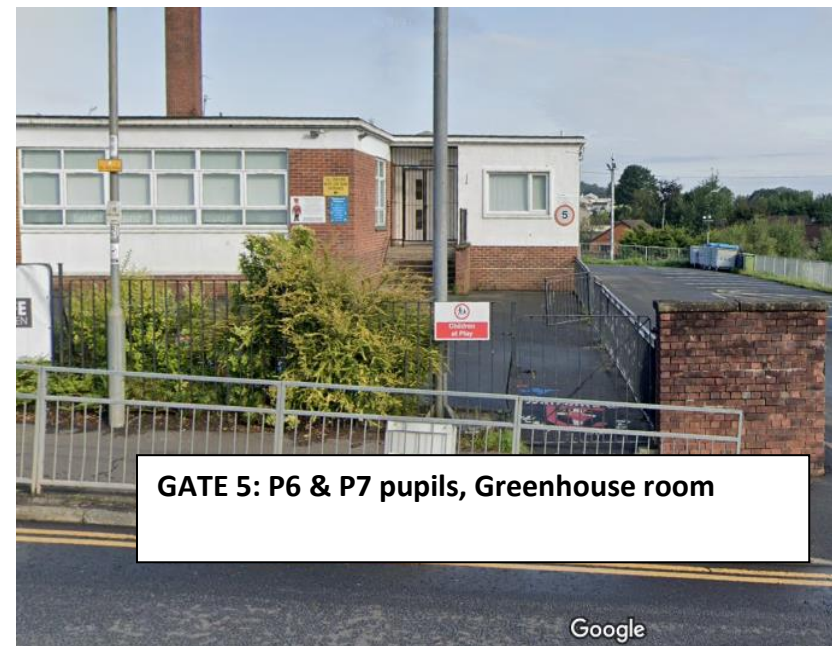
Pupil Drop Off and Pick Up Arrangements:

Where possible, pupils should walk, scoot or cycle to school to promote good health and avoid traffic congestion and pollution around our school grounds. The staff and visitor car park will be closed to parents due to health and safety and access arrangements for pupils entering the school grounds. Parents who must drive their children to school should park nearby and show consideration for our neighbours, avoiding double parking or blocking access to houses and driveways. A new car park/ drop off zone is being developed on the site of the old nursery.

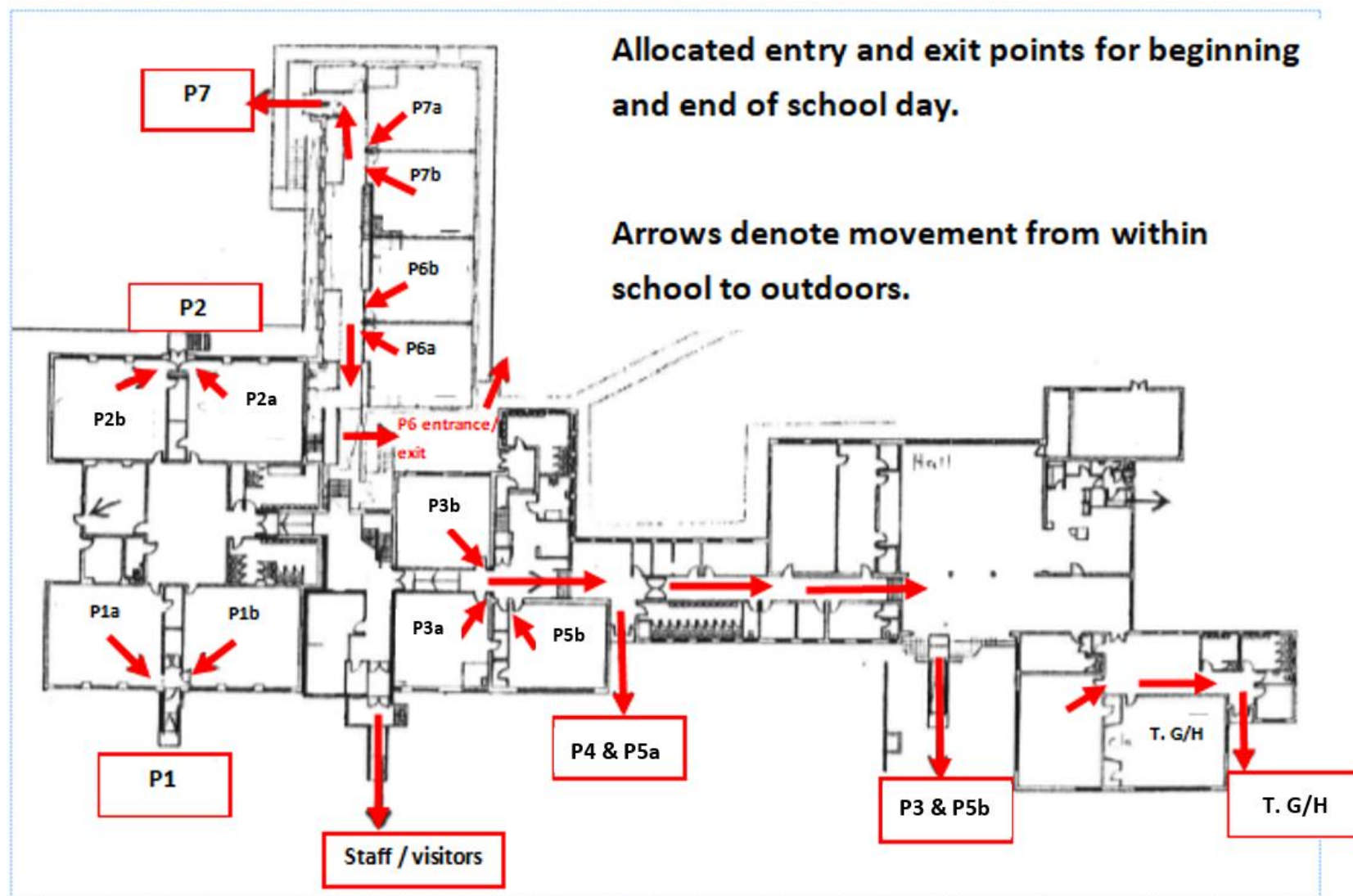
The table below indicates where your child should enter the school grounds. Please observe social distancing when dropping and collecting your child and make way for other families as they arrive/ depart. **The gates to the school grounds will be open for a soft start from 8:45am and pupils will be able to enter the school building and go straight to their classroom. (P1 parents/ carers should drop their children for 9:30am on the first day of term, and from 8:45am thereafter).** Staff will supervise the gates and classrooms, ensuring that all pupils know where they are supposed to be. Parents and carers should not enter the school grounds or building. This includes the staff and visitor car park.

Primary	Gate to enter by / exit from (pictures on Page 7)	Door to enter by/exit from (map on Page 8/9)
Primary 1	Gate 1: Main double gate (far left as you face the school)	P1 entrance (front left of school)
Primary 2	Gate 1: Main double gate (far left as you face the school)	P2 entrance (rear of school, accessed via far left of playground as you face the school)
Primary 3 & Primary 5b	Gate 4 (facing school hall entrance)	School hall door
Primary 4 & Primary 5a	Gate 3 (facing middle school entrance)	Middle school entrance (leading to stairwell to upstairs classrooms)
Primary 6	Gate 5 (beside car park entrance)	P7 doors in rear playground
Primary 7	Gate 5 (beside car park entrance)	P6 doors in middle rear playground
The Greenhouse	Gate 5 (beside car park entrance)	Family Room entrance (front right of school)

PUPIL ACCESS POINTS



Pupil Entrance and Exit Arrangements (Ground Floor):



Pupil Entrance and Exit Arrangements (First Floor):

