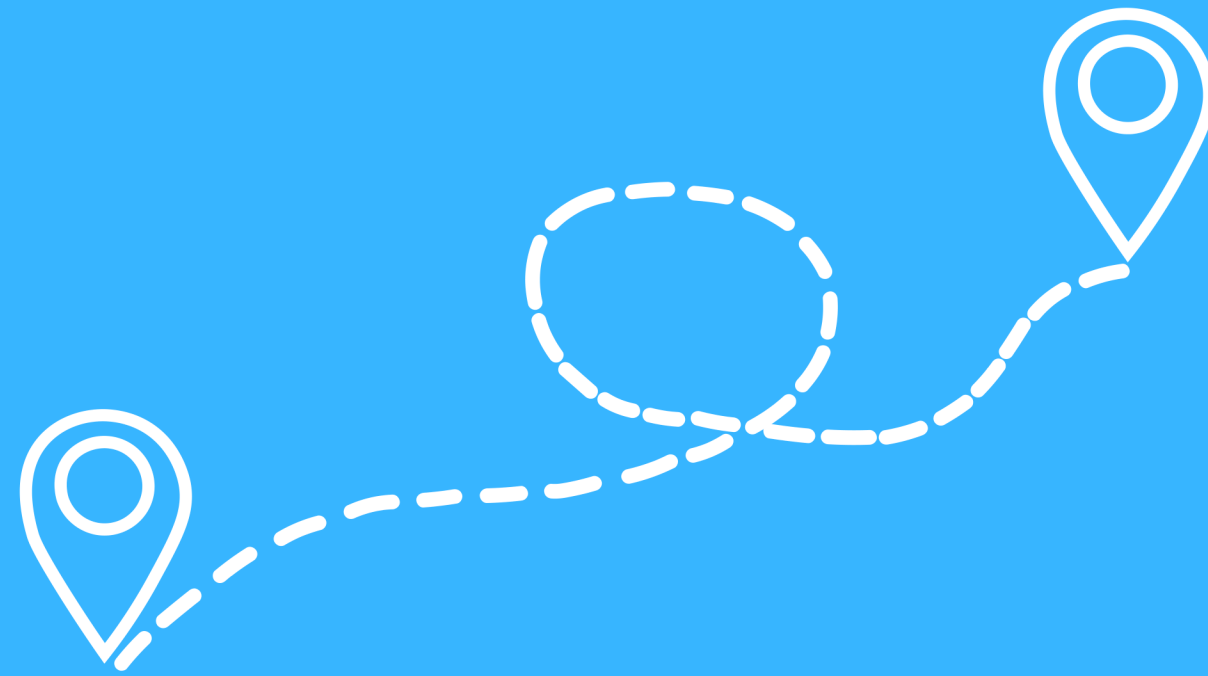


St John's Primary



School Improvement Plan 2023-2-24



Leadership and Management



How good is our approach to leadership and management?

Promote the autonomy and agency of learners and practitioners to design and implement Curriculum for Excellence in the ways that best meet the needs of learners.



Teachers learn from each other and utilise data and research to improve learning and teaching across the school.

Improve learner participation opportunities to develop children's leadership skills.



Increase knowledge and understanding of the Early Years Curriculum and legislation, procedures and practices in preparation for the opening of St John's nursery class.

Learning Provision



How good is the quality of care and education we offer?



Build and sustain a reading culture across the school, particularly with targeted groups, including disengaged readers.

Improve learners' confidence in Numeracy and Mathematics, developing their understanding of progress by providing a range of learning experiences

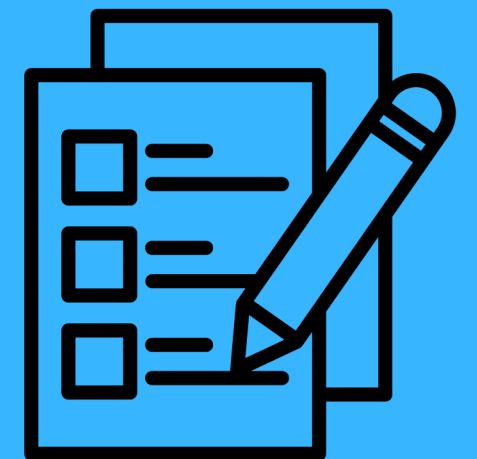


Build on the success of developments in the teaching of writing through an integrated approach

Revise approaches to the delivery of Numeracy and Mathematics, developing staff knowledge, skills and pedagogical approaches



Approaches to assessment as part of planning for learning and teaching are embedded across the school



Successes and Achievements

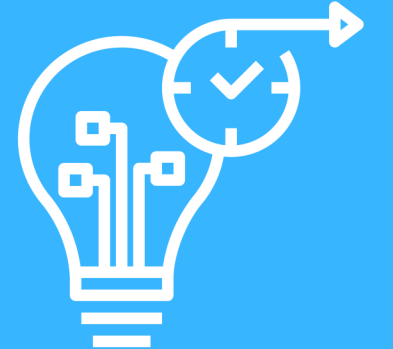


How good are we at improving outcomes for all learners?

Embrace the theme 'Pilgrims of Faith' to nurture the faith life of our school community.



Improve teachers' and children's confidence and skills in digital technology



Develop and understand our vision for Learning for Sustainability and its relevance to learners.

Review the Family Centred Approaches framework to increase parental engagement in children's learning and in the life of the school to improve outcomes for learners.



Ensuring Equality, Wellbeing and Inclusion



Embedd health and wellbeing practices with a particular focus on need based support informed by research.



Closely monitor attendance including working with cluster schools to pilot appraoches.



Raise attainment and confidence in reading and writing, numeracy and mathematics for identified cohorts of learners.



Ensure regular opportunities for parental engagement through a range of planned initiatives across the school year.