

Public Performance Report

Information for Parents
December 2013

Mhairi Shaw
Director of Education



Education Department

Background Information

East Renfrewshire Council (ERC) is committed to providing relevant information to parents, and other interested parties, about our schools. This report provides:

Background information	<i>Page 2</i>
Performance in Isobel Mair School	<i>Page 3</i>
Attendance rates for pupils	<i>Pages 3-7</i>
Curriculum for Excellence Assessment 3-15	<i>Page 8</i>
Information on National Qualifications	<i>Pages 8-9</i>
Four year summary of SQA examination results	<i>Pages 10-12</i>
S4 to S5 transfer rates	<i>Page 13</i>
School leaver destinations	<i>Pages 14-15</i>
Recognising Wider Achievement	<i>Page 16</i>
Skills for Learning, Life and Work Qualifications	<i>Page 16</i>

Please Note:

All information varies from school to school and must be placed within the context of the neighbourhood serving the school. A number of factors influence the performance of the schools therefore care is necessary when interpreting the attainment information. Full details on individual schools are available from the school itself, and head teachers will be happy to assist you in this matter.

More details on the performance of East Renfrewshire schools can be found in the Authority's annual Standards and Quality Report. This can be found on-line or a copy can be made available at the Education Offices (Barrhead Main Street) or in a local school.

Isobel Mair School

Isobel Mair School is East Renfrewshire's school for children with additional support needs and is nationally recognised as providing a high quality education for children and young people with severe and complex learning difficulties.

The school is located in a specially designed building which opened in October 2012, providing access to a high quality learning environment and resources. A summary of some of the recent achievements of pupils is given below.

Pupils continue to make very good progress within long term targets in Literacy and English, Maths and Numeracy and Health and Wellbeing. The educational experience of senior pupils continues to be enhanced through an extended programme of Access Units Levels 1- 2, National Units 1 and 2, Intermediate 1 units and ASDAN to enable personalisation and choice. All pupils have achieved the units for which they were presented.

Pupils have benefited from the development and promotion of outside learning opportunities within the school grounds. By having access to a rich outside learning environment pupils have developed skills in problem solving, communication and co-operative working.

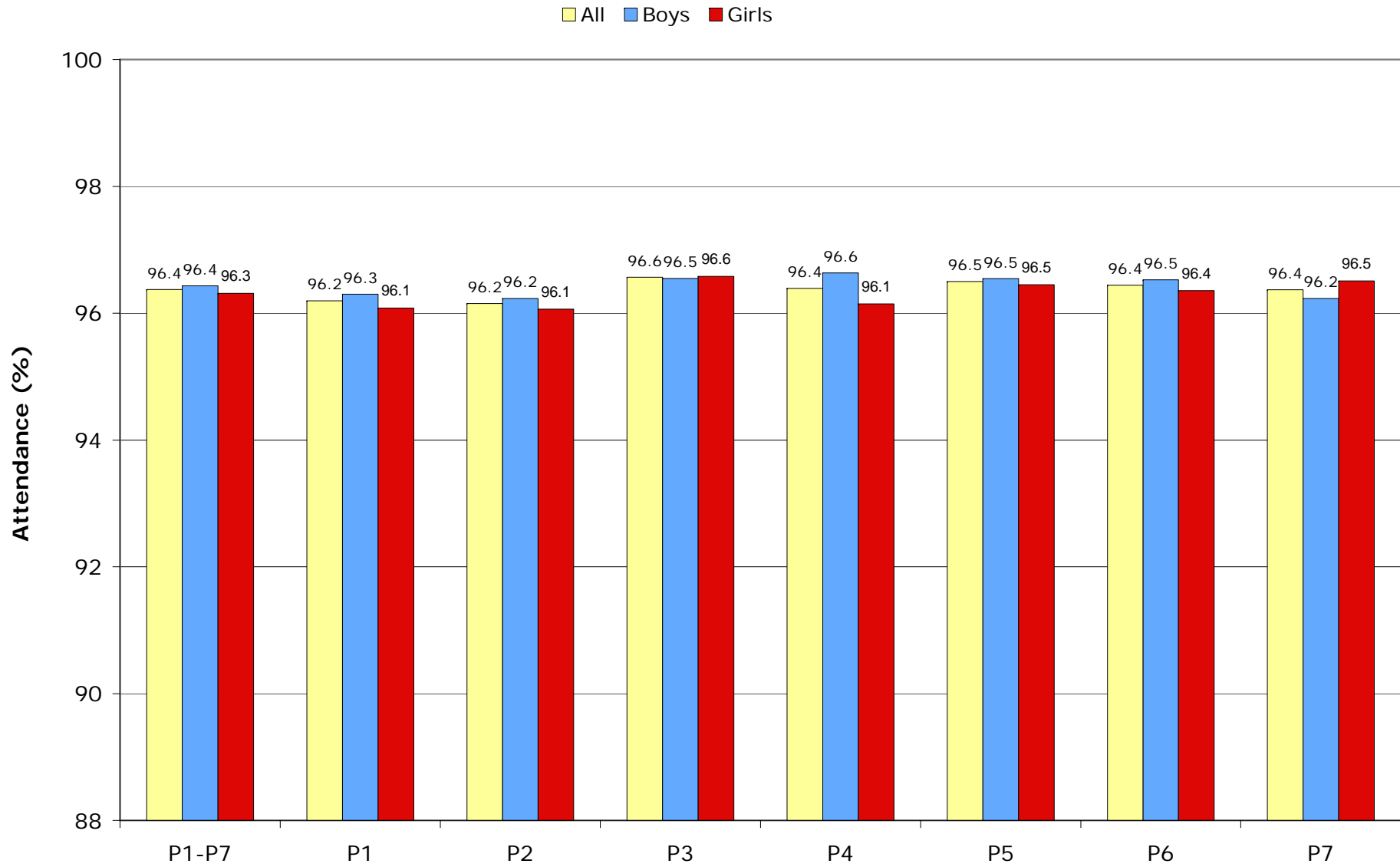
The educational experience of pupils has also been enhanced through science investigations, inquiries and challenges. The work of this initiative led to the school's first Science Fair introduced by Professor Brian Cox via the internet. A Science Fair will now become a bi-annual event within the school curricular framework.

The Community Unity Programme is a collaborative programme with Crookfur and St Cadoc's Primary Schools. Children from the three schools are given opportunities throughout the year to undertake a range of learning experiences including taking part in sporting events, technology projects, a choir and working together on a dramatic performance. This creative and innovative programme gives pupils high quality inclusion opportunities, broadens their experiences, develops their talents and underlines the school's valued role in the community.

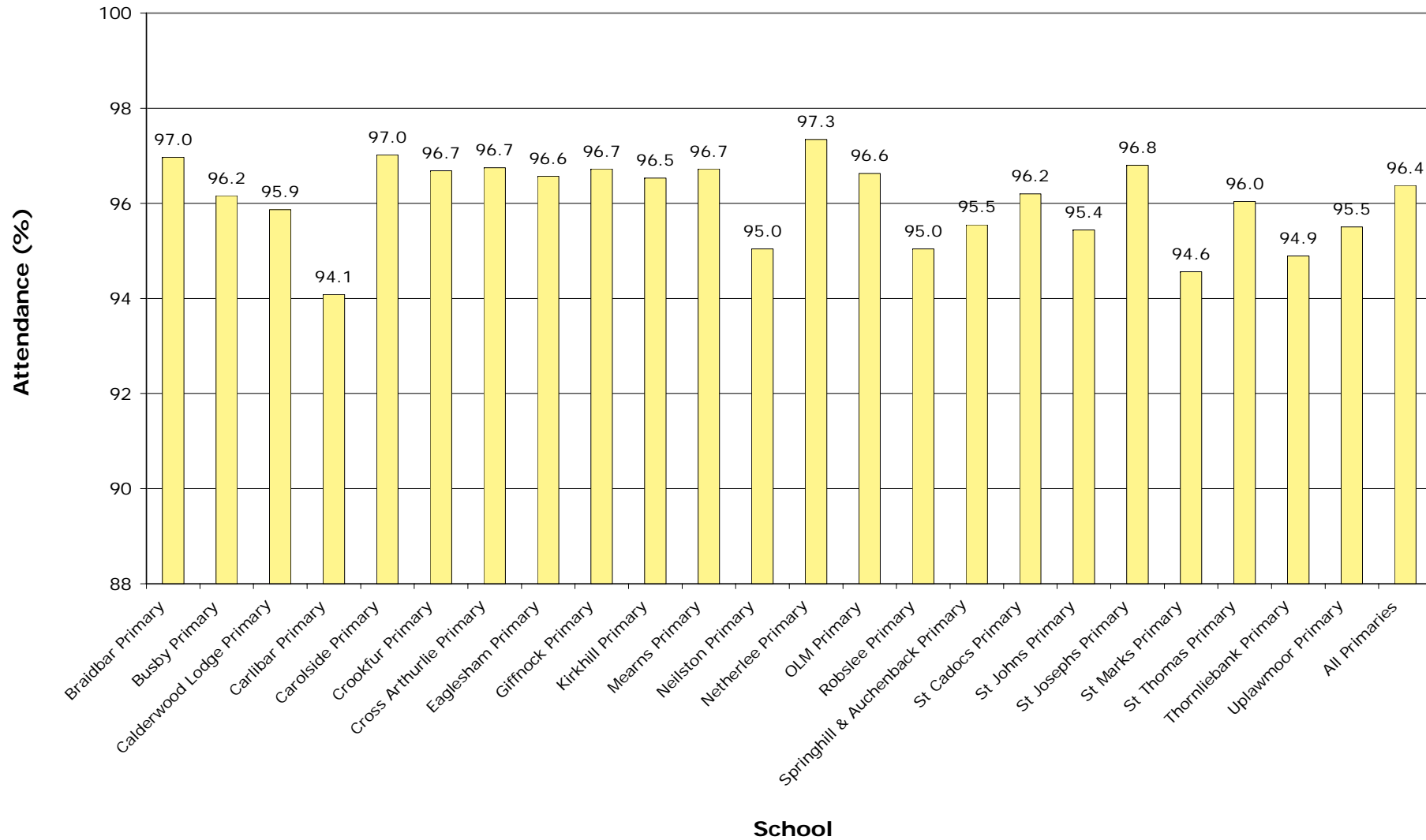
Attendance

Attendance levels continue to remain high in East Renfrewshire. For primary schools the attendance rate for school session 2012-13 was 96.4% down very slightly from 96.7% in 2011-12. In secondary schools the S1-S5 attendance rate in 2012-13 remained at 94.6%. In Scotland the 2012-13 overall attendance rate was 94.9% in primary and 91.9% in secondary (S1-S6). In 2012-13 the attendance in East Renfrewshire was the highest of all local authorities.

Attendance: All Primaries: 2012-13

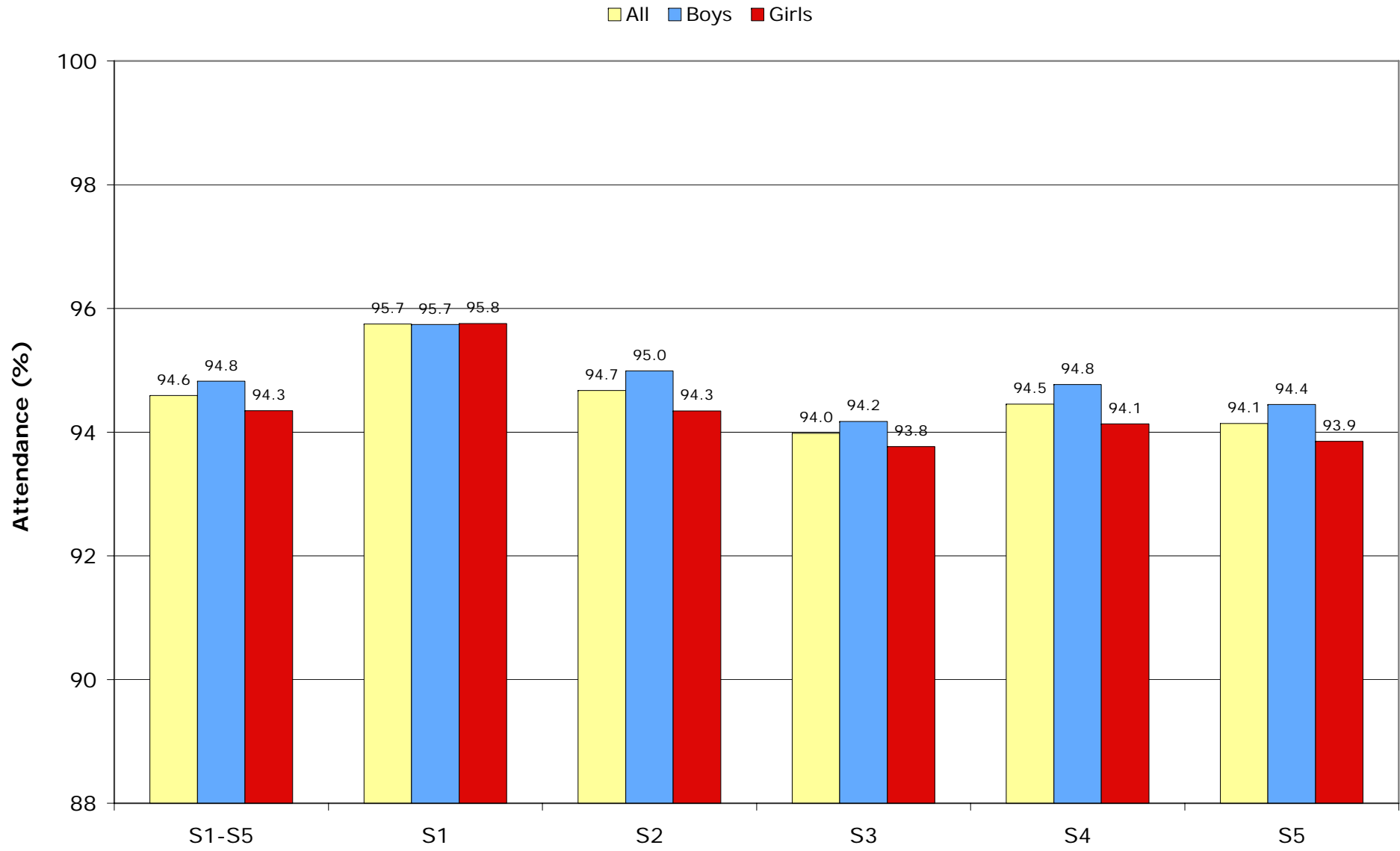


Attendance: Compare Primary Schools: P1-P7: 2012-13

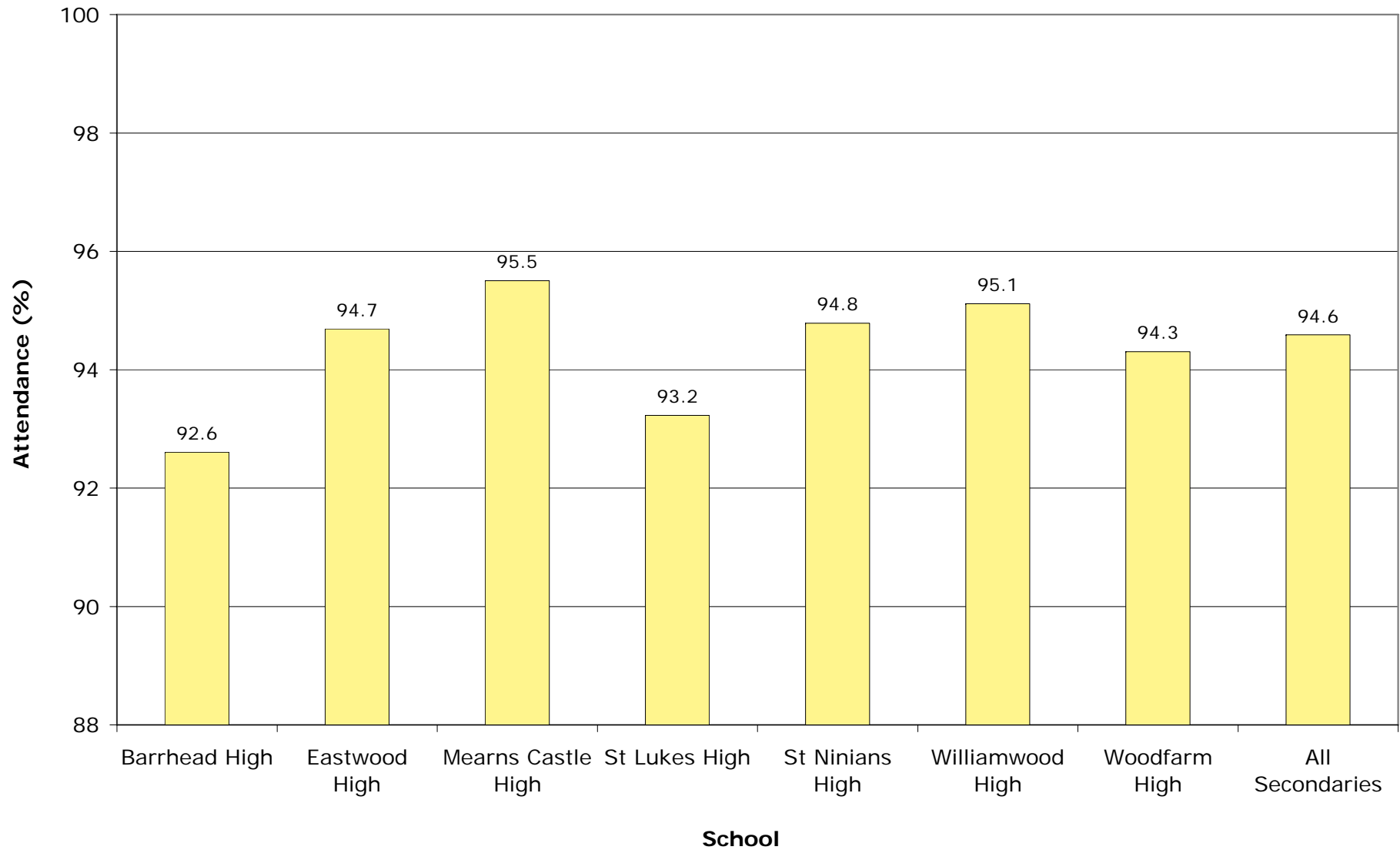


Notes: Auchenback and Springhill Primary Schools combined from session 2012-13. Giffnock and Robslee Primary Schools are undergoing a phased amalgamation from 2012-13.

Attendance: All Secondaries: 2012-13



Attendance: Compare Secondary Schools: S1-S5: 2012-13



Curriculum for Excellence Assessment 3-15

Progress with *Curriculum for Excellence* meant that 2009-10 was the final year in which 5-14 national assessment results were produced and monitored. Schools implemented new assessment procedures as part of Curriculum for Excellence from August 2010 onwards.

East Renfrewshire has established systems to monitor and track pupil progress in reading, writing and mathematics through the levels set out as part of the assessment framework for Curriculum for Excellence. 2010-11 results represented a new baseline with the expectation that results will increase over the next few years as staff become more familiar with teaching and assessing in line with Curriculum for Excellence.

In 2012-13 87.3% of primary pupils achieved the appropriate levels in reading up from 84.5% in 2011-12. 82.1% of pupils achieved the expected levels in writing up from 79.6% the previous year. Mathematics attainment increased by nearly 2% from 84.9% in 2011-12 to 87.1% in 2012-13.

National Qualification Examinations – S4

In East Renfrewshire young people study the National Qualification courses of Access and Intermediate awards in place of Standard Grade. These National Qualification courses are structured to provide a better progression to 5th year courses including the Higher. Generally courses at Intermediate 2 level reach a more advanced stage than the Credit level Standard Grade awards. For reporting purposes a rough equivalence between Standard Grade awards and National Qualifications is used (see below); and this is used to compile the S4 results reported in this booklet.

Scottish Credit and Qualifications Framework (SCQF) levels:

7: Advanced Higher at A-C; CSYS at A-C

6: Higher at A-C

5: Intermediate 2 at A-C; Standard Grade at 1-2 (Credit level)

4: Intermediate 1 at A-C; Standard Grade at 3-4 (General level)

3: Access 3 Cluster; Standard Grade at 5-6 (Foundation level)

Performance at S4-S6

Performance levels in East Renfrewshire continue to remain at the top compared to other authorities in Scotland. East Renfrewshire remained the highest performing authority in the key indicators at Levels 5 and 6 in the 2013 SQA examinations. The results that the young people achieved in their national examinations were superb, in particular:

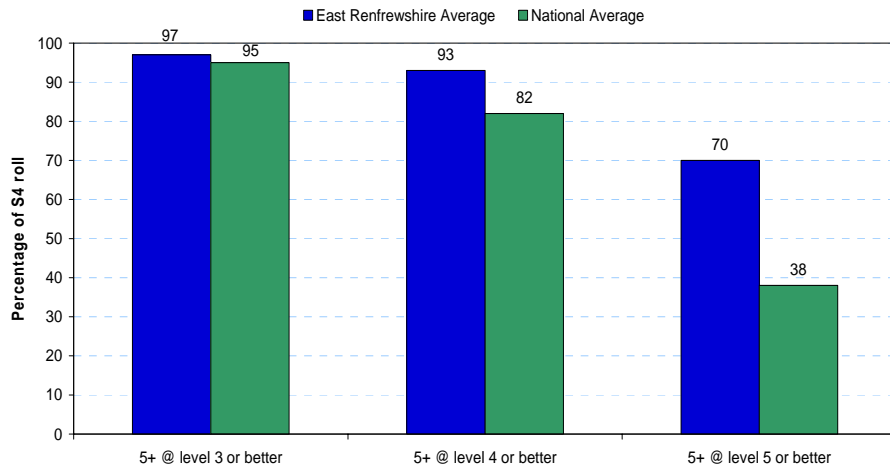
- Young people in S4 achieved the highest ever results at SCQF level 5 (Intermediate 2). 70% of the year group achieved 5 or more qualifications at this level or better, up from 68% in 2012.
- The Higher results for S5 pupils were also the best ever with significant increases in all measures. 39% achieved 5 or more Highers and 59% achieved 3 or more Highers (based on the original S4 cohort),
- The Advanced Higher results for S6 pupils continue to very high with 30% of young people (based on the original S4 roll) achieving 1 or more Advanced Highers.

Compared to nationally defined similar schools across Scotland, all of East Renfrewshire's 7 secondary schools generally perform in the top 25% against their comparator schools and are often the top school in their group. Barrhead, Eastwood, Mearns Castle and Woodfarm High Schools had their best ever S4 performance at Level 5. In addition Mearns Castle, St Ninian's, Williamwood and Woodfarm had their best ever S5 results for 5 Highers.

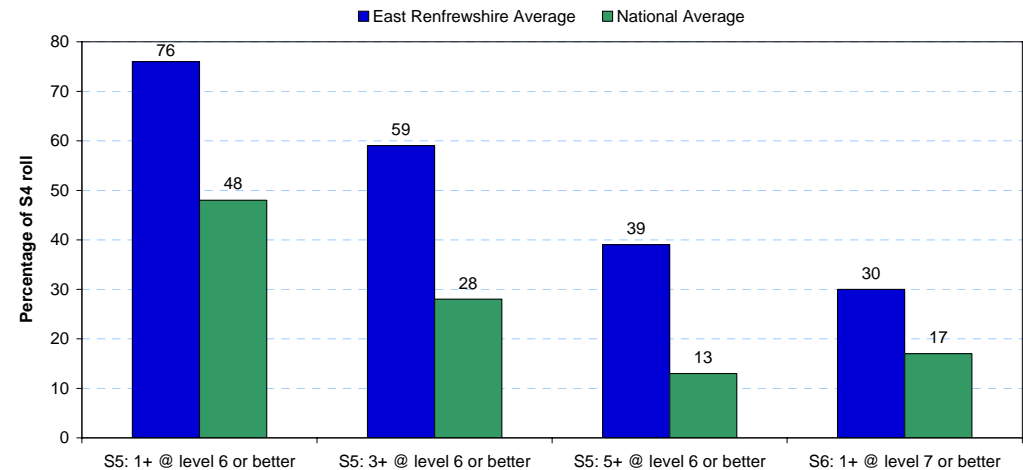
St Ninian's was the highest performing mainland state school in Scotland for 5 or more Intermediate 2 awards in S4 and the highest performing state school for 5 Highers. Williamwood was the highest performing state school in Scotland for 1 or more and 3 or more Highers in S5.

More details of the excellent performance in National Examinations are contained within this report. However, neither East Renfrewshire Council nor the schools are complacent, and we all continue to strive towards improving standards further.

Secondary School Performance in SQA Examinations: 2013
% of S4 roll achieving awards by end of S4



Secondary School Performance in SQA Examinations: 2013
% of relevant S4 roll achieving



**Examination Results within Scottish Credit and Qualifications Framework
(2012-13 results are pre-appeal)**

Percentage of the relevant September S4 roll achieving:

5+ @ level 3 or better

5+ @ level 4 or better

5+ @ level 5 or better

by end of S4

by end of S4

by end of S4

School name	5+ @ level 3 or better by end of S4				5+ @ level 4 or better by end of S4				5+ @ level 5 or better by end of S4			
	2009-10	2010-11	2011-12	2012-13	2009-10	2010-11	2011-12	2012-13	2009-10	2010-11	2011-12	2012-13
Barrhead High School	93%	93%	94%	89%	78%	80%	80%	82%	32%	38%	35%	43%
Eastwood High School	94%	97%	96%	96%	90%	92%	88%	92%	54%	55%	56%	66%
Mearns Castle High School	96%	92%	97%	96%	93%	88%	95%	92%	76%	61%	74%	76%
St Luke's High School	98%	95%	95%	99%	83%	85%	81%	89%	55%	47%	50%	50%
St Ninian's High School	97%	97%	98%	99%	96%	92%	96%	97%	77%	73%	83%	80%
Williamwood High School	94%	95%	96%	97%	90%	92%	95%	96%	72%	73%	81%	79%
Woodfarm High School	94%	94%	99%	97%	85%	84%	94%	91%	60%	54%	59%	63%
East Renfrewshire	95%	95%	97%	97%	89%	89%	91%	93%	65%	61%	68%	70%
National	92%	93%	94%	95%	78%	79%	80%	82%	36%	36%	37%	38%

**Examination Results within Scottish Credit and Qualifications Framework
(2012-13 results are pre-appeal)**

Percentage of the relevant September S4 roll achieving:

School name	1+ @ level 6 or better				3+ @ level 6 or better				5+ @ level 6 or better			
	by end of S5				by end of S5				by end of S5			
	2009-10	2010-11	2011-12	2012-13	2009-10	2010-11	2011-12	2012-13	2009-10	2010-11	2011-12	2012-13
Barrhead High School	45%	43%	43%	53%	28%	24%	26%	30%	14%	8%	15%	12%
Eastwood High School	59%	66%	65%	66%	36%	44%	40%	45%	20%	22%	17%	24%
Mearns Castle High School	74%	83%	72%	86%	57%	70%	57%	70%	36%	46%	33%	49%
St Luke's High School	67%	55%	50%	53%	48%	36%	39%	38%	26%	16%	23%	20%
St Ninian's High School	79%	82%	80%	87%	64%	71%	66%	73%	43%	48%	44%	53%
Williamwood High School	83%	83%	85%	88%	70%	62%	65%	75%	47%	38%	46%	53%
Woodfarm High School	65%	69%	63%	71%	46%	49%	40%	48%	26%	30%	23%	32%
East Renfrewshire	71%	73%	70%	76%	53%	56%	52%	59%	34%	34%	33%	39%
National	43%	45%	47%	48%	25%	26%	27%	28%	11%	12%	13%	13%

**Examination Results within Scottish Credit and Qualifications Framework
(2012-13 results are pre-appeal)**

Percentage of the relevant September S4 roll achieving:

3+ @ level 6 or better

5+ @ level 6 or better

1+ @ level 7

by end of S6

by end of S6

by end of S6

School name	3+ @ level 6 or better by end of S6				5+ @ level 6 or better by end of S6				1+ @ level 7 by end of S6			
	2009-10	2010-11	2011-12	2012-13	2009-10	2010-11	2011-12	2012-13	2009-10	2010-11	2011-12	2012-13
Barrhead High School	41%	48%	40%	40%	26%	31%	26%	26%	12%	15%	10%	17%
Eastwood High School	53%	46%	56%	52%	37%	33%	40%	36%	28%	24%	28%	25%
Mearns Castle High School	68%	67%	79%	66%	51%	56%	69%	50%	28%	36%	45%	32%
St Luke's High School	42%	53%	46%	46%	29%	38%	37%	35%	15%	18%	16%	18%
St Ninian's High School	76%	73%	81%	75%	60%	57%	64%	61%	32%	36%	46%	41%
Williamwood High School	73%	80%	78%	76%	60%	63%	58%	58%	38%	46%	39%	38%
Woodfarm High School	54%	55%	60%	51%	40%	44%	51%	34%	28%	28%	33%	20%
East Renfrewshire	62%	64%	68%	63%	47%	50%	53%	47%	28%	32%	35%	30%
National	33%	35%	37%	38%	22%	24%	26%	26%	15%	16%	16%	17%

School name	Estimated S5 January roll as % of S4 roll in September of previous session			
	2009-10	2010-11	2011-12	2012-13
Barrhead High School	73%	84%	88%	87%
Eastwood High School	85%	95%	88%	95%
Mearns Castle High School	92%	96%	94%	94%
St Luke's High School	90%	94%	84%	85%
St Ninian's High School	93%	95%	96%	98%
Williamwood High School	94%	97%	99%	97%
Woodfarm High School	87%	87%	85%	95%
East Renfrewshire	89%	94%	93%	94%
National	75%	73%	79%	79%

	Young People leaving in school year 2012-13									
	Total No. of Leavers	Percentage with destination as								
School name		Higher Education	Further Education	Training	Employment	Voluntary Work	Activity Agreements	Unemployed Seeking	Unemployed Not Seeking	Unknown
Barrhead High School	118	41.5%	28.8%	1.7%	15.3%	2.5%	4.2%	5.9%		
Eastwood High School	158	55.7%	19.0%	3.2%	17.1%	0.6%	1.9%	2.5%		
Mearns Castle High School	209	67.5%	12.9%	1.0%	12.4%	1.0%		3.3%	1.9%	
St Luke's High School	115	49.6%	27.0%	3.5%	13.0%	2.6%	1.7%	2.6%		
St Ninian's High School	281	72.2%	11.4%	0.7%	11.7%			3.6%	0.4%	
Williamwood High School	300	70.3%	14.3%	0.7%	11.0%	0.3%	0.3%	3.0%		
Woodfarm High School	141	49.6%	24.8%	1.4%	15.6%	1.4%		5.7%	1.4%	
East Renfrewshire	1,322	62.0%	17.5%	1.4%	13.2%	0.9%	0.8%	3.6%	0.5%	
National	52,801	36.5%	27.8%	5.0%	20.4%	0.5%	1.3%	7.1%	1.2%	0.3%

Notes:

1. Due to rounding school totals may not sum to 100%.
2. Activity Agreements are defined as an agreement between a young person and a trusted professional, the young person takes part in a programme of learning and activity which helps them become ready for formal learning or employment.

Pupils leaving school not in a positive destination (i.e. Not in Education, Employment, Training, Voluntary Work or Activity Agreements*)				
School name	2009-10	2010-11	2011-12	2012-13
Barrhead High School	5.5%	7.5%	7.0%	5.9%
Eastwood High School	4.9%	3.2%	4.1%	2.5%
Mearns Castle High School	6.6%	3.2%	3.2%	5.3%
St Luke's High School	6.5%	18.6%	6.3%	2.6%
St Ninian's High School	6.6%	6.3%	4.1%	3.9%
Williamwood High School	3.7%	6.9%	3.5%	3.0%
Woodfarm High School	3.8%	7.4%	8.6%	7.1%
East Renfrewshire	5.5%	6.7%	4.7%	4.2%
National	13.2%	11.1%	10.1%	8.6%

*2009-10 data above refers to that group of young people who have left school, but are not in education, employment, training or engaged in voluntary work. The 2010-11, 2011-12 and 2012-13 data refers to young people who have left school but are not in education, employment, training, voluntary work or activity agreements.

In 2012-13, the percentage of young people who left school in East Renfrewshire and were not engaged in full-time education, employment, training or voluntary work was 4.2%. East Renfrewshire's ambition is for all school leavers to enter a positive destination post school.

Recognising Wider Achievement

The table below shows that the number of young people achieving awards increased from 263 in 2008 to 2297 in 2013.

	2008	2009	2010	2011	2012	2013
Duke of Edinburgh Awards	56	147	110	169	463	730
ASDAN Awards/Personal Effectiveness	39	16	287	269	335	437
Sports Leadership	135	153	135	151	382	155
Diana Award	33	13	158	352	86	170
John Muir Award	-	-	-	-	130	359
Saltire Award	-	-	-	-	82	393
Caritas Award	-	-	-	-	30	53
Total	263	329	690	894	1508	2297

Skills for Learning, Life and Work Qualifications

The table below shows the number of young people successfully completing courses that were delivered (at least part) in college.

Level	2008-09	2009-10	2010-11	2011-12	2012-13
City & Guilds Level 2	0	6	5	7	-
One unit studied at Level 6	-	-	-	3	6
Two units studied at Level 5	-	-	-	6	-
Four units studied at Level 6	-	-	-	9	-
Four units studied at Level 5 and 6	32	29	30	-	-
SCQF Level 1	6	14	9	12	9
SCQF Level 3	0	10	5	0	5
SCQF Level 4	13	44	73	38	46
SCQF Level 5	27	25	40	34	47
SCQF Level 6	34	34	52	51	82
SCQF Level 7	5	11	15	9	6
Various*	21	35	33	38	33
Total	138	208	262	213	234

*Includes ASDAN, National Rescue Standard (NaRS), First Aid Awards, British Institute Innkeeping Awarding Body (BIAB).

