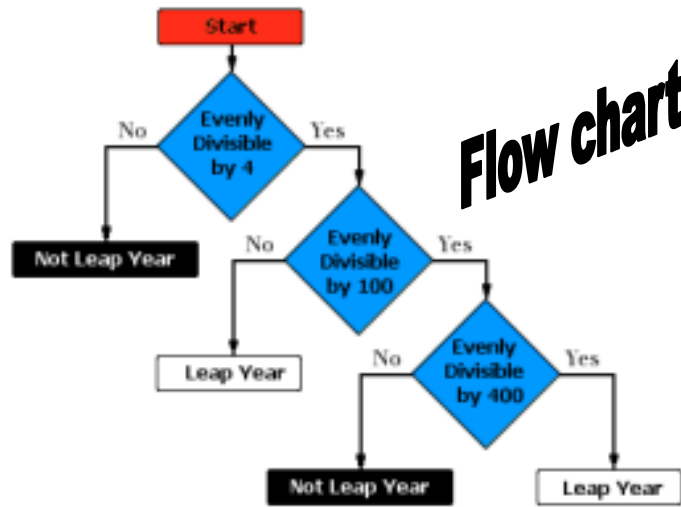


Leap years occur once every 4 years.  
The earth takes 365 and a quarter days to go around the sun, so every four years, we make up the four quarters by adding one extra day to the year!



...to calculate whether or not a year is a leap year

### Leap-Year Math Quiz

1. List the next five leap years after 2012
2. Sara was born in 1988. What was the first leap year during her lifetime?
3. Circle the years that were leap years:  
1900, 1972, 1956, 1946, 1992, 1886, 1420, 1600
4. List the next five century leap years.
5. The day of the week that a date falls on usually skips forward one day the following year. January 1, 2011, was a Saturday; January 1, 2012, was a Sunday. But if there's a February 29 between the two dates, the day of the week "leaps" forward an extra day: January 1, 2013, will be on a Tuesday (instead of Monday). On which day will January 1 fall in...
  - a. 2014?
  - b. 2017?

BONUS: A leap year occurs every four years. Based on that information, about how many hours longer than 365 days do you think it takes Earth to revolve around the sun?

**Answers;**

1. 2016, 2020, 2024, 2028, 2032

2. 1988

3. 1972, 1956, 1992, 1420, 1600

4. 2400, 2800, 3200, 3600, 4000

5. a. Wednesday b. Sunday

BONUS: It takes about 365 days and 6 hours for Earth to revolve around the sun.