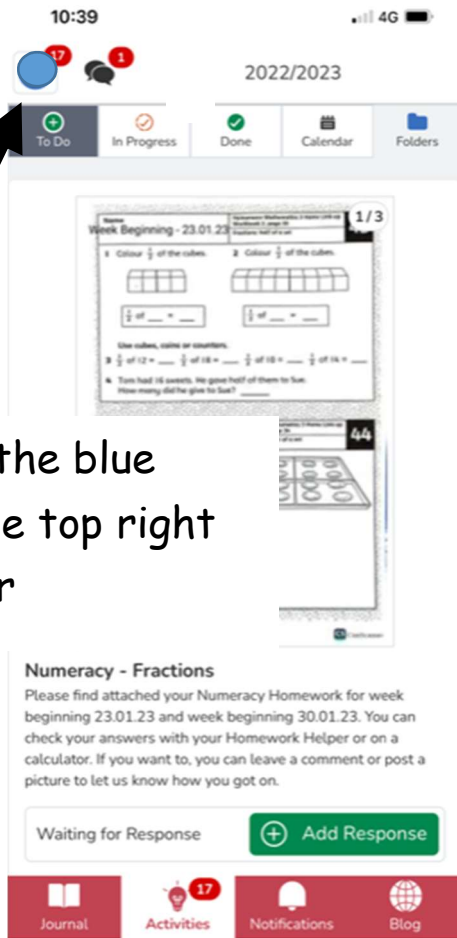
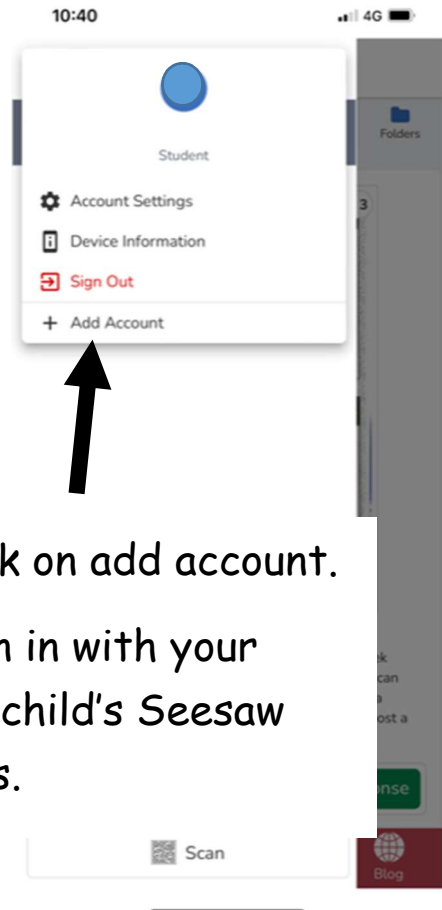


Seesaw- How to add a second seesaw account to one device

1. Open up the Seesaw app on a device.



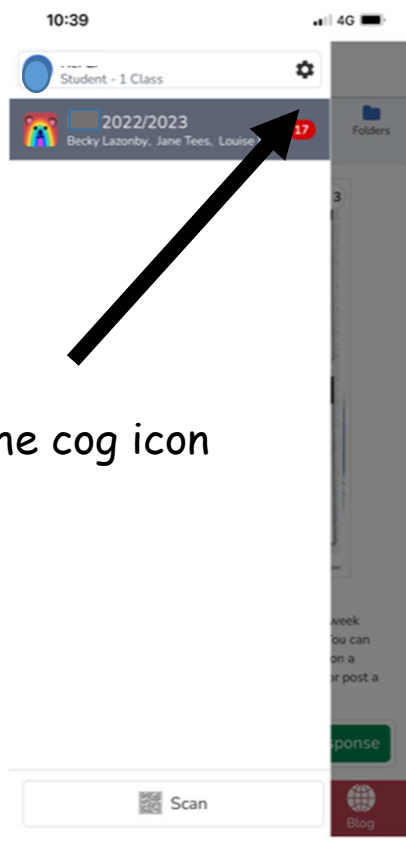
2. Click on the blue circle at the top right hand corner



5. Click on add account.

6. Sign in with your other child's Seesaw details.

4. Click on the cog icon





7. Click on the blue circle again in the top left hand corner if you select See Other Accounts you can work between both accounts on one device.