

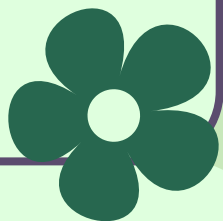
Head Teacher's Message

Hello everyone! I trust you all had a lovely summer - whether you were term-time on 'Summer Holidays' or still attending the Family Centre at this time.

To all of our new families - welcome to Hazeldene Family Centre. My name is Justin Hardie and I am the Head Teacher of this wonderful establishment. We hope that you, and your family, feel welcome and part of our amazing Hazeldene Family community.

We're thrilled to have the pitter-patter of little feet filling our playrooms once again as we kick off a brand new season of fun and learning. The laughter, the curiosity and the boundless energy of our children brings life and joy to every corner of our Family Centre. As we embark on this journey together, we're excited to create unforgettable moments, foster new friendships, and ignite the spark of imagination in each and every one of our young learners. Here's to a fantastic year ahead, filled with exploration, growth and endless smiles!

Thank you so much and we can't wait to continue working with you all.



Staff News

Please see below our Keyworker Group Allocation for session 2024-25. Our vacancy for our Hedgehog Group is currently being advertised and I will keep you informed of the outcome of this position.



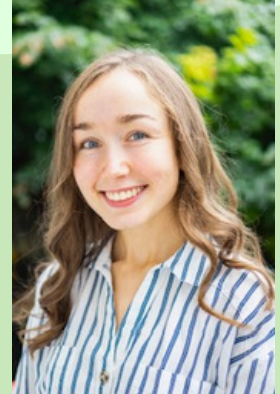
Robin



Robert



Kerry



Emily



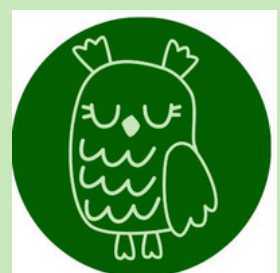
Gillian



Janette



Lynne



Donna Ann



Charlotte



Anna



Vacancy



Learning About Forests (LEAF) Award

We are delighted to announce that, just before the Summer Holidays, Hazeldene Family Centre was awarded the LEAF Award for all of our work in learning outdoors and nature connection.

This was a year's worth of work and development and is a true testament to the dedication of the entire staff team.

Special mention has to go to Kerry, Robert and Gillian who led the work across the Family Centre.

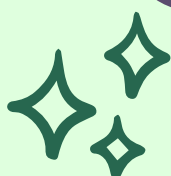
We are 'over-the-moon' to be able to say that we are one of the first Early Learning and Childcare provisions in the country to receive this award.



Hazeldene Family Group

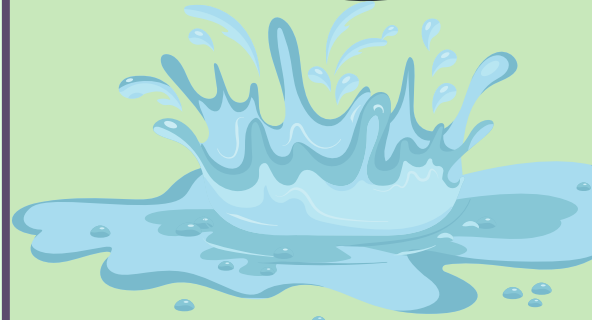
We are keen to involve families in the work and life of the Centre and would love to hear from you about the sorts of events you'd be interested in having.

Please speak to Pauline if you are interested in being involved in our Family Group.



Pegs, Bags, Shirts, Wellies - Oh My!

- When your child starts (or returns) to Hazeldene they will be assigned a peg and a corresponding drawstring bag. This is the bag that they will use to transport items between home and nursery. A spare set of clothes and some underwear (for those little accidents) is all the children really require.
- A pair of named wellingtons for outdoor play as the children access the gardens every day. Children no longer require to transport their own waterproof jackets or trousers as we have multiple nursery sets that are frequently laundered. To minimise clutter, can we kindly ask the wellingtons are collected each day.
- All children will be provided with a Lending Library bag that they can use to borrow books from the bookcases in the main corridor. At collection time parents/carers can bring the Book Bag with them and access our Lending Library with their child.



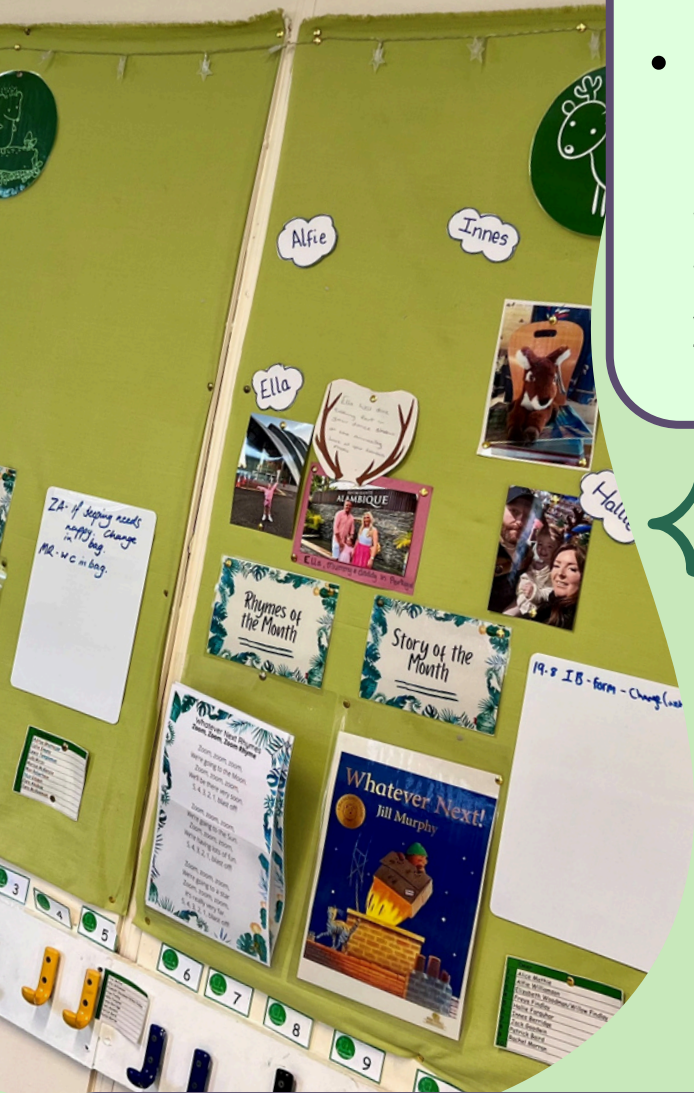
Nursery Uniform

At Hazeldene Family Centre we offer a uniform to allow families to protect their children's clothes from being lost or ruined. We experienced a significant amount of unclaimed Lost Property last year and wish to prevent this from reoccurring. The uniform consists of a yellow polo shirt with the Hazeldene logo. Please note jogging bottoms with elasticated waists are much easier for children than zips or buttons. Families can purchase the polo shirt from:

www.schoolwearmadeeasy.com

Keyworker Group Communication Boards

- Please familiarise yourself with your child's Group Communication Board. Here you will be able to leave messages for staff on the whiteboard; see what the 'Story and Rhymes of the Month' are and also place a family photo of you and your child.



Hamish!

At Hazeldene Family Centre we are so lucky to have Hamish as part of our family. Hamish is a hypo-allergenic Shihpoo (Shih Tzu/ Poodle Mix) and has been visiting schools and nurseries since he was a tiny puppy working in various Nurture Classrooms and Inclusion Bases. He currently works as a 'Wellbeing Pet' on Thursdays at Wellshot Primary School in Glasgow City Council and attends Hazeldene Family Centre on Fridays. Now that Hamish is six-years-old he can officially sit his exams to become a Therapet.

Children (and adults!) benefit so much from having contact with animals. Caring for animals is an enriching experience for children which offers opportunities to experience nurture, relationships and nature. Animals need to be treated with love, empathy and respect, just like humans. And whilst they may enjoy a cuddle sometimes, at others, they may need space, feeding, grooming or walking. Children can learn to be empathetic to the needs of the animal and to recognise these needs without using words. Hamish has Public Liability Insurance and a full Risk Assessment should anyone wish to see this.

Should any family wish to opt-out of this opportunity, this is absolutely not a problem, and can speak to the Head Teacher, Justin Hardie, about this.

Parking

The parking bay at the front of Hazeldene is used for limited waiting while dropping off/picking up children. This helps to greatly reduce the number of children having to cross the road. To ensure as many families as possible can benefit, parents and carers are respectfully reminded to restrict parking in the lay-by to around 10 minutes.

Please turn at the roundabout instead of making a 3 point turn in the layby.

Please do not park in the Disabled Bay unless you are a blue badge holder. We have some families who depend on this space to access our building safely.

Please consider other road users and do not block driveways/park next to the roundabout/obstruct crossings.

Thank you to everyone for your co-operation.



Nursery Fund

At Hazeldene Family Centre, we ask parents to contribute to our nursery fund. The money raised from these contributions is used to buy items for special celebrations; resources to support child-responsive planning and activities like baking, cooking and gardening. It also pays for any guests and specialists who we may invite in to work with the children and it subsidises the cost of any planned excursions.

Our preferred method of payment is online via ParentPay. Our Business Support staff will issue log in details if you do not already have an account.

Thank you to everyone who has contributed to date.

Dates for your Diary

Event	Date
Teachers return	Monday 12 August
In-service	Monday 12 August
In-service	Tuesday 13 August
Pupils return	Wednesday 14 August
Last day of school	Thursday 26 September
September weekend	Friday 27 September
September weekend	Monday 30 September
Re-open	Tuesday 1 October
Last day of school	Thursday 10 October
In-service	Friday 11 October
Re-open	Monday 21 October
Last day of school	Friday 20 December

