

Transition meeting

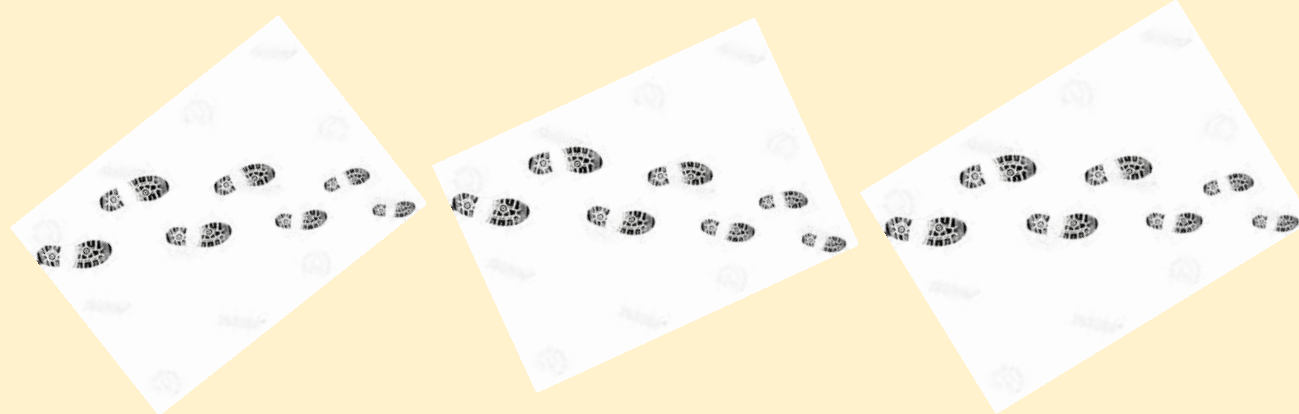
It's getting closer.....

January 2022



Our journey so far in preparation for our next steps

Before	Now	Next
Met Woodfarm Staff	Transition Group meets – January and February	Transition Group meets
Transition Group started	Meeting with families possibly online - January	Go to Lockerbie - March
Families contacted	Woodfarm French Play - February	Woodfarm Music - April
High School diaries	Woodfarm Staff visit - February	Transition visits – April & May if appropriate
		3 Day visit to Woodfarm - June



**Find out
about
your new
school**

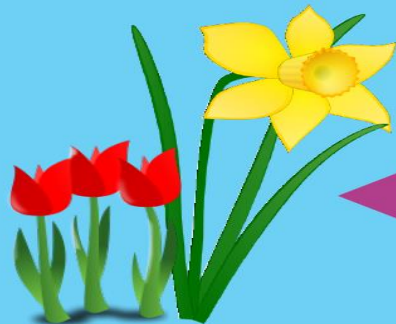
Winter !



**Try using a
homework
diary to help
with planning**



**Start
visiting
your
new
school**



Spring!

Practise independence
Pack your bag
Lay out clothes
Make your snack/lunch

Secondary School

When you move to secondary school:



Make **prompt cards** with lists of equipment you need for different lessons.

Remember the **5 a day rule** for your pencil case – pens, pencils, rubber, ruler and calculator.



Make sure you **get to your next lesson on time** by packing your bag quickly and get moving ahead of the rush.



If you feel a little lonely during the first few weeks find out if there is a library, base or ICT suite you can spend time in during the lunch break.



Make sure you **get to the dining hall** quickly, this means you are more likely to get a seat with others you know, and the food will not have run out!



If you find it **difficult to choose what to eat** at lunchtimes check the menu as soon as you can and decide your first and second choices.



Look out for **lunchtime and after-school clubs**. This is a good way to meet new friends and learn new skills.

Some nearby high schools are



<https://blogs.glowscotland.org.uk/er/Woodfarm/>

<http://www.hillpark-sec.glasgow.sch.uk/PlainText/PlainText.aspx?SectionId=eafe92e2-4e3a-49ec-8fbc-0a4138777356>



<https://blogs.glowscotland.org.uk/gc/shawlandsacademy/for-parents/transition-to-s1/>

<https://blogs.glowscotland.org.uk/gc/shawlandsacademy/for-parents/transition-to-s1/mini-tours-1/>



Next steps

What questions do I have
What information do I need
What help do I need