

Giffnock Primary School



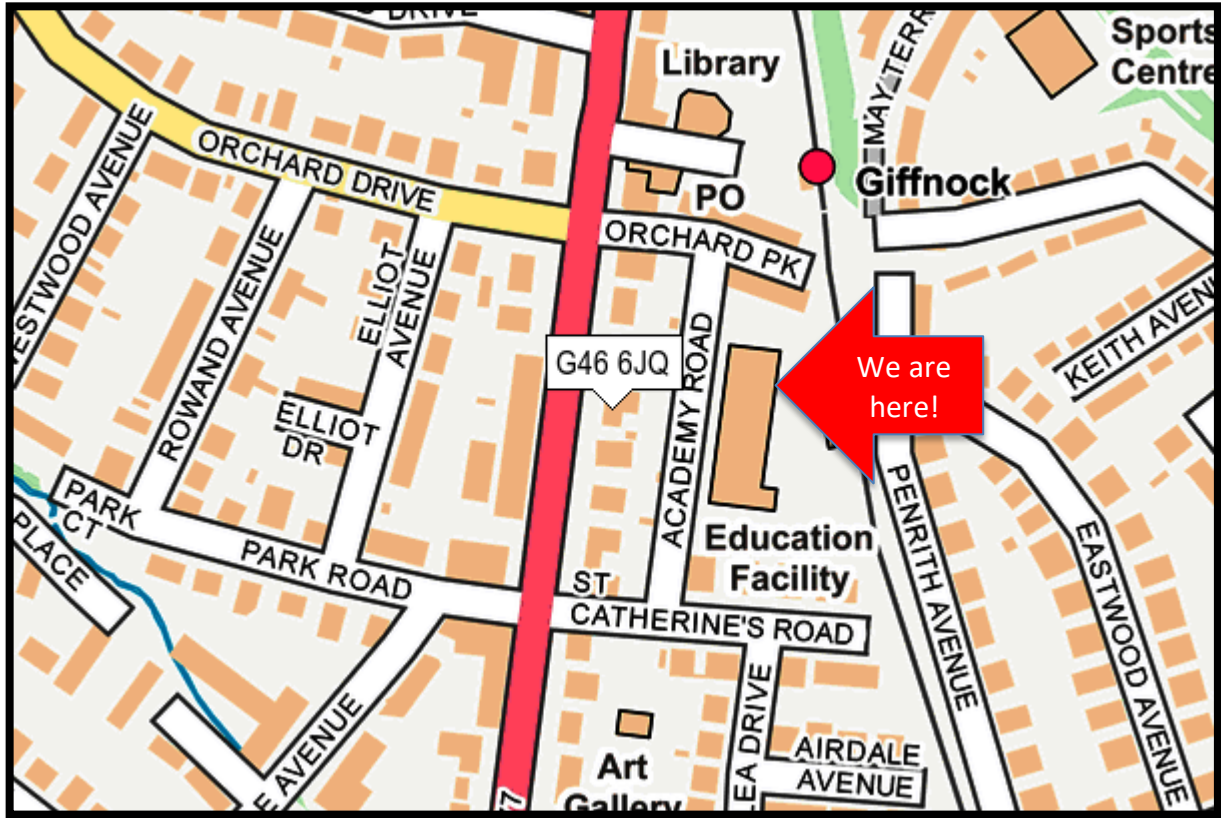
School Travel Plan 2019 – 2022



Introduction

Our School:

- Giffnock Primary



At Giffnock Primary, we have Nursery to Primary 7 classes. We have two classes in each year. We have 399 pupils in the school.

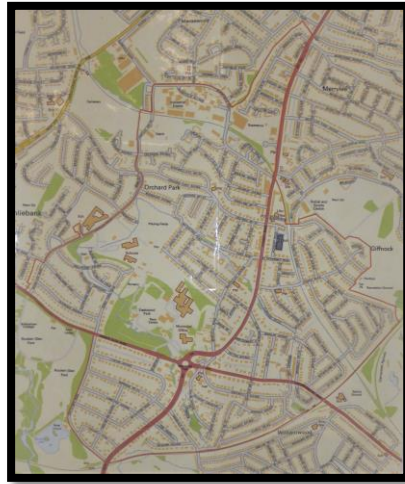
We have 38 members of staff at school (including Teaching, Secretarial, Janitorial and Catering staff)

Our School day is from 8:55 to 3:00



Our Catchment Area

(Outlined in red)



We are part of the Woodfarm Cluster.

****Covid -19 Update****

The following changes are now in place on Academy Road:

- Parking and 'pull in bays' have been closed to allow for social distancing among pedestrian drop-offs.
 - Signage around the school has been changed.
- Police and Community Officers will be patrolling the area to ensure safety procedures are followed.

Please help by following these temporary measures and we will inform you as soon as they can be changed.

Thank You



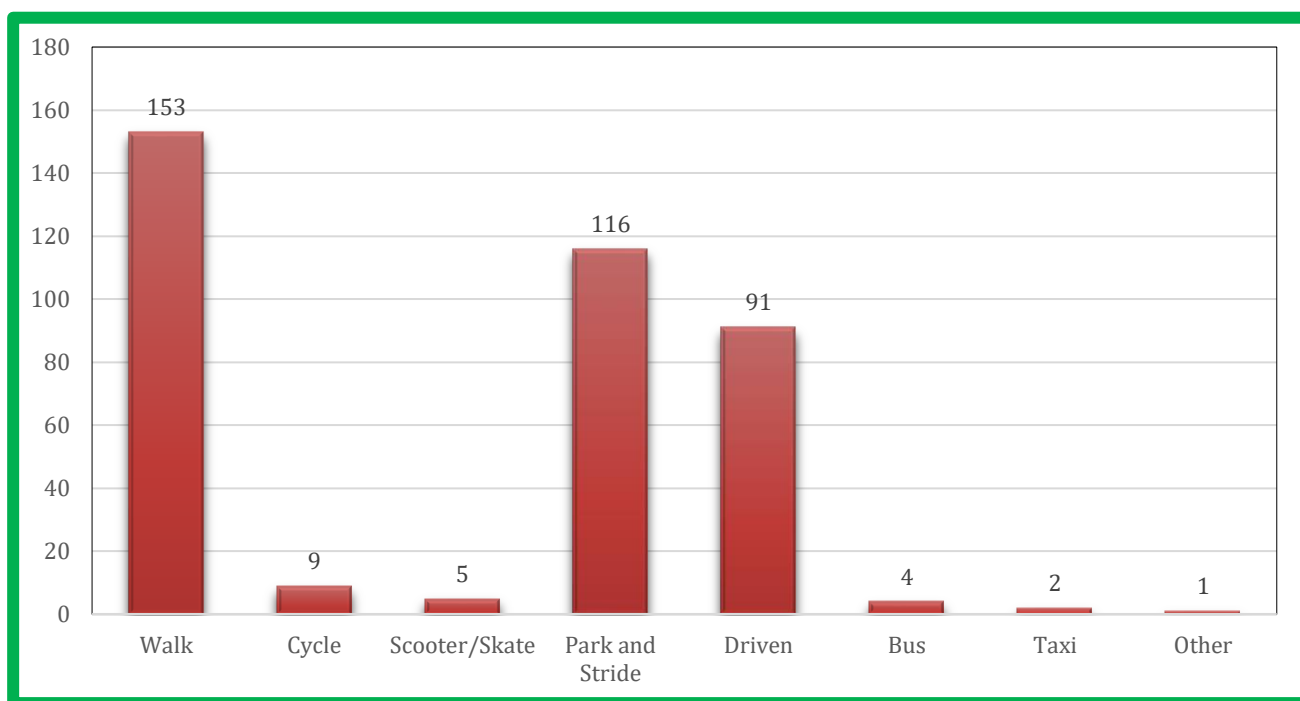
We run various After School clubs throughout the year. Lunch Clubs are also offered. Our After School clubs begin at the end of school day and finish at 4:00pm.

Breakfast Club begins at 7:45 am and finishes at 8:50 am. After school care clubs are provided by 'Primary Play Care' and 'Offgrid'. Children are picked up for both of these at the end of day.

Current Situation

2.1 Current Travel Patterns

Our Hands Up Scotland was carried out in September 2019. We carry this survey out across all classes in accordance with HUSS guidelines. It includes all children from Nursery to Primary 7.



Hands Up Survey - Giffnock Primary September 2019



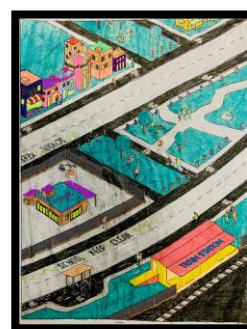
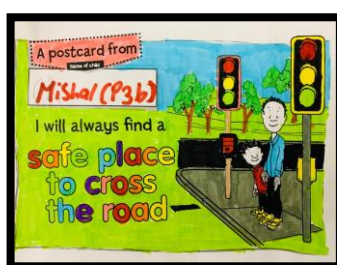
	Walk	Cycle/ Scooter	Bus /Train	Car /Taxi
How pupils usually travel <u>to</u> school*	153	14	4	209
How pupils usually travel <u>from</u> school*	153	14	4	209

Number of pupils	380
Number of responses received	380

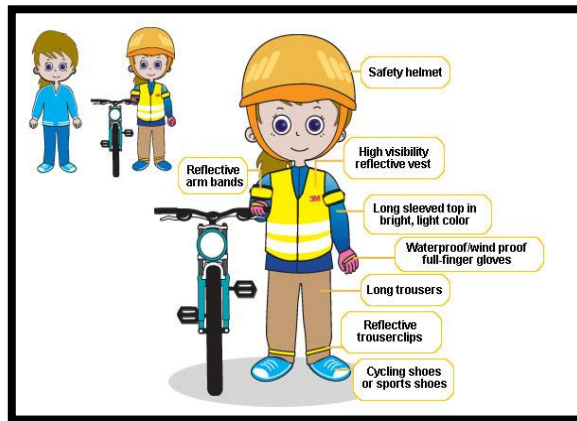
We have recently completed our participation in Road Safety Week. This involved two visits from Police Scotland to highlight their activities in reducing speed on our roads.



Our JRSO Committee also ran three differentiated competitions from P1 to P7 and carried out a whole school Assembly. This looked at reducing speed and wearing high visibility clothing in the dark.



We have held a 'Dress Brightly Day' to remind all our children to wear something that can be seen by cars in the winter mornings and evenings.



Over the summer we have refurbished our bike shed and we can now accommodate over 50 bikes.



We are engaged with East Renfrewshire Road Safety Officers to promote Bikeability 1, 2 and 3 across both classes of Primary Six and Seven.



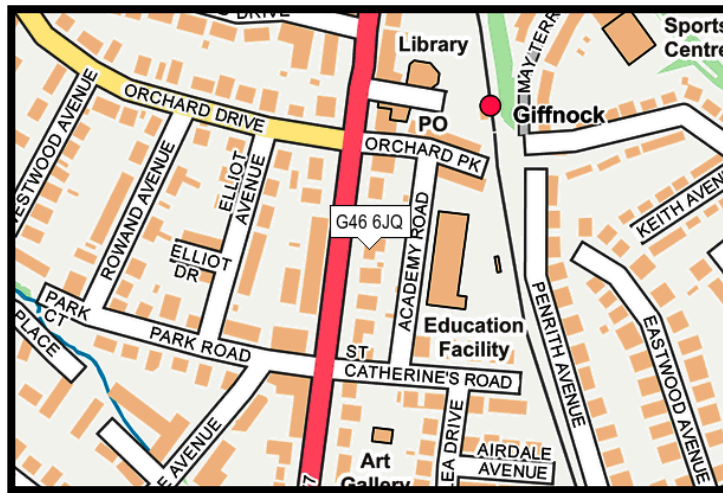
Accordingly, we have been awarded our second Cycle Scotland Award.



We have increased our promotional safety banners on the front of the school to compliment ERC 'Walk, Bike etc banners. These contain images and messages created by the pupils from our 2017 JRSO Competition and have increased both road safety awareness and community engagement.



2.2 Issues and Problems

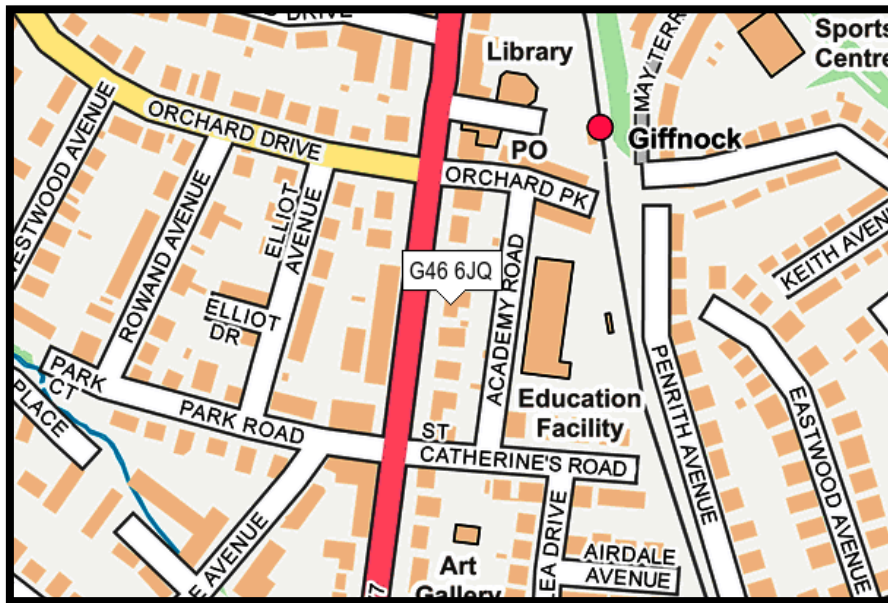


All vehicles visiting the school access via St. Catherine's Rd and then on to the one-way system of Academy Rd. This provides a degree of control and safety. Pedestrian access is provided by two gates, at the south and north of Academy Rd respectively:



There is a central access gate for service and emergency vehicles and access to the school car park that also allows service and emergency access to the back playground. This is used predominantly for bin access and food deliveries. It also provides a valuable access point for any outside events organised within the school or visiting workshops.





Pedestrian and cycle access points to the school grounds are from all points around the school. We have a manned crossing with lights across Fenwick Rd from Orchard Dr into Orchard Park Rd and lights from Park Rd. Pedestrians and pupils living to the east of the school also use the railway bridge to access the station carpark past the library.

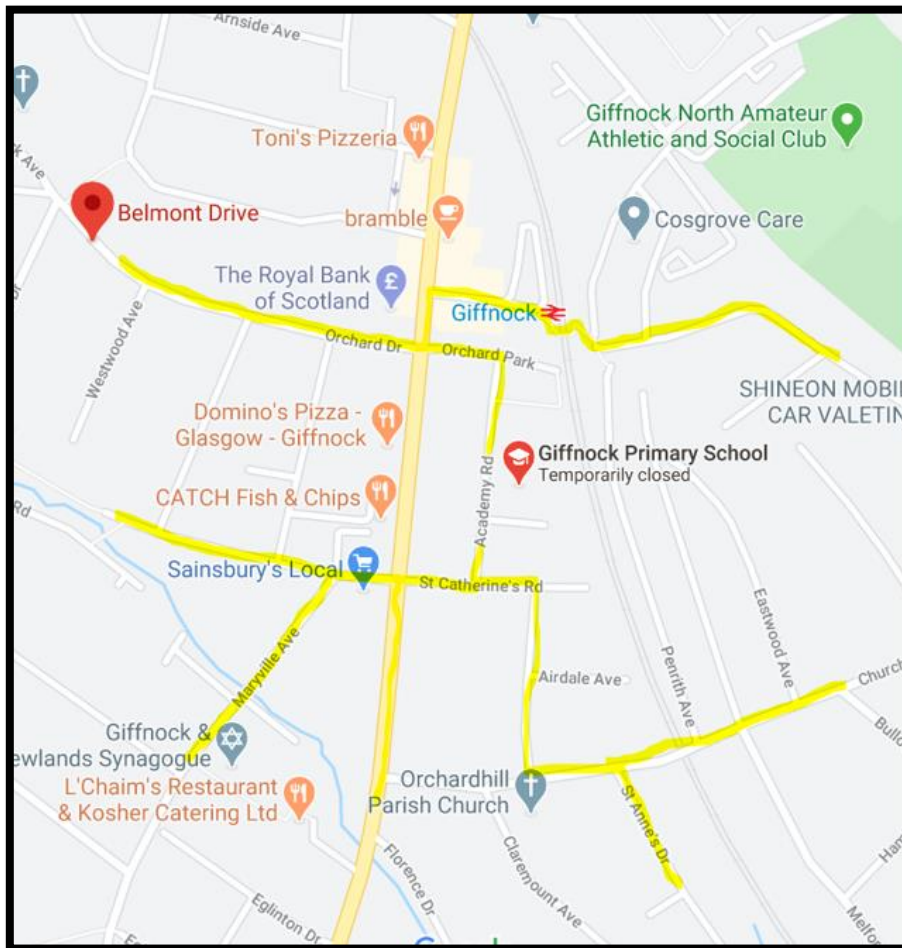


We have two disabled car parking spaces situated beside a small pedestrian access gate from the staff car park. This then leads towards our disabled access ramp at the central entrance.



Our staff car park has space for 40 cars and a turning point at the far end to facilitate safe exit. It is manned each morning to guarantee safe entrance for staff and pedestrian crossing. Children and parents take direction from our janitor as to when to cross the entrance gate.





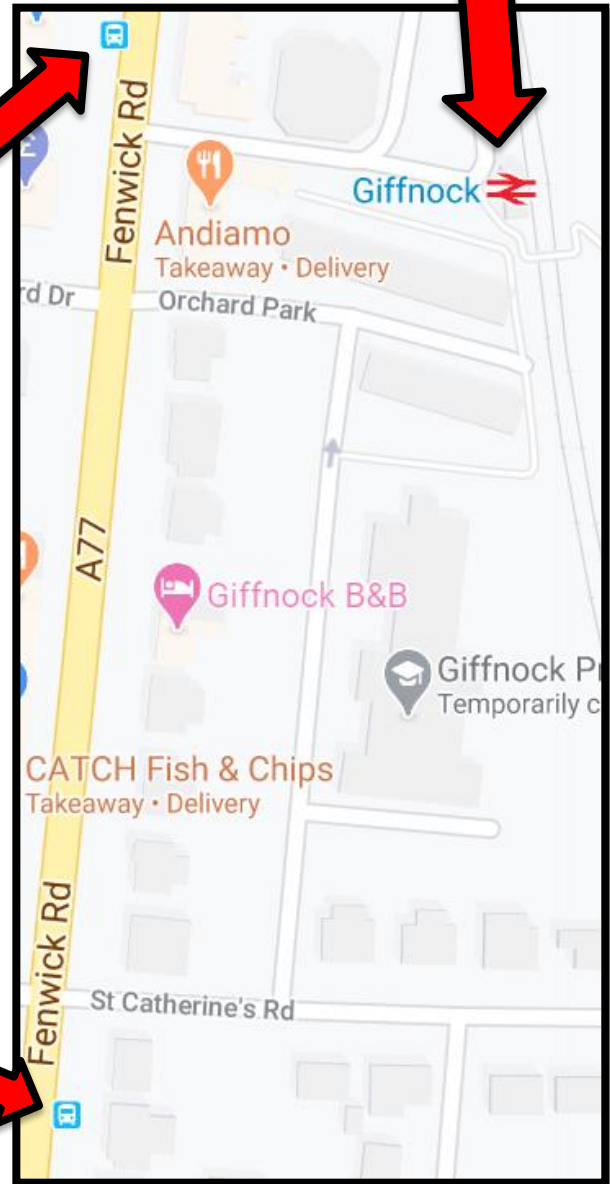
Main walking and cycle routes highlighted above.



We are well served by a shared cycle path along Fenwick Rd from Eastwood Park that is well used by both pedestrians and cyclists. This provides safe cycling with three pedestrian crossing points along the route to allow children to transfer to the east side of the road safely.



We have two bus stops on Fenwick RD at the south and north entrances to Academy Rd, as well as the train station. They all have safe pedestrian access to the school. Bike storage is available at the station as well as in our school.



We have congestion and parking issues in and around the school, especially at our peak drop off and pick up points. These are continual issues that we are addressing in partnership with parents and the local community. Within the school the Junior Road Safety Officers (JRSO) work closely with the Parent Council and Eco Committee to review and assess issues.

Many road safety issues were raised in the survey in the recent ERC road survey and we are taking our lead from that in looking for adequate Park and Stride sites.

Children and parents have been made aware of spots to take care on, especially at the corner of St. Catherine's Rd and Academy Rd. Two streams of traffic feed into this junction



We have measured success in limiting parking on paths and allowing access for pedestrians and prams. This has been improved on Robslea Drive and our aim is to develop more Park and Stride locations at the following:

- Otterburn Drive
- Forres Av
- Orchardhill Car park
- Lidl Car Parks
- Rowland Av
- Elliot Ave



2.3 Current Achievements

As highlighted above we have been successful in many areas of both road safety and traffic management. We are committed to move forward in as many areas as we can, with partners within our community and in East Renfrewshire Council. The following initiatives have been achieved as part of our collaborative efforts:

- Bikeability 1, 2 and 3
- JRSO Committee
- Cycle Scotland Award
- Walk to School
- Road Safety Week
- Eco Flag Award
- Police Scotland Visits



Preferred Situation

3.1 School Travel Plan Objectives

Our set aims through using our Travel Plan are:

- to reduce car use for travel to school
- to increase walking and cycling to school
- lower emissions around the school
- to improve safety on the journey to school

3.2 School Travel Plan Targets

Our targets are SMART, i.e. Specific, Measurable, Achievable, Relevant and Time-limited. They relate to our Action Plan and are monitored and measured against criteria set by the JRSO, Eco Committee, Staff and Parent Council. Our targets for the next three years are:

- Park and Stride at Lidl: Contact the company and request access to their car parking facilities that parents can use to park and stride.
- Decrease cars and increase walkers: promote cycling and walking awareness among pupils and encourage parents to avoid using their cars where practical. We aim to reduce car use by 10% over the next two years of the travel plan.
- Cycling: Expand Bikeability training to include Bikeability 1, 2 and 3 and improve facilities for bike storage for both pupils and staff. Provide shower facilities for staff who would like to cycle to school. We aim to increase the proportion of pupils cycling or walking to school by 10% after two years.



Implementation

4.1 School Travel Plan Partnership

We will work with various parties (e.g. pupils, parents, school staff, active schools, local community, council, police, etc.) including trained helpers e.g. Cycle Training Assistants to achieve our Travel Plan.

- Road Safety Assistants – consultation over condition of surrounding roads.
- Police Scotland – visits to school.
- PSA's – support across Bikeability and in class.
- Lollypop Person – continual visits ot school to raise awareness, especially in lower school.
- Janitor – support in supervising car parking and road safety at peak hours.
- Eco Committee members – continual communication regarding the important levels of air pollution around the school.

4.2 Consultation

We continue to seek out the opinions and ideas of all those directly affected by the issues and actions proposed in our School Travel Plan through various means:

- Our recent ERC School Travel Survey.
- Consultation of all pupils in our annual 'Hands Up Survey'.
- Parent Council.
- Eco Committee.
- Neilston Trust Cycling.
- Cycling Scotland.
- Bikeability Scotland.
- All our consultations have resulted in productive initiatives that have reinforced our aims and targets.



Implementation

4.3 Action Plan

JRSO Committee Action Plan

Date Range of this Plan: Sept 2019– April 2020

Action	Who's in charge?	When will it be done by? (if ongoing, when did it start?)	How can we monitor it?	How will we know when we're successful?	How much will it cost?	Did it work? Any ideas for the future?
Class Elections to form a new JRSO committee	Mr. Connell and Mrs Livingstone will choose four pupils from each P6 class.	September 2019	Mr. Connell to receive results.	All election results will be collated and winners announced.	N/A	Worked well – all members are enthusiastic and pleased with their positions.
Issue JRSO equipment	Mr. Connell.	September 2019	All members will bring their JRSO packs to meetings.	Equipment will be used and retained safely in school. Other equipment used for prizes.	N/A	Committee are pleased with their equipment and are keeping personal minutes during meetings. Badges are all in place.
Announce and introduce JRSO Calendar Competition	Mr. Connell and JRSO Committee.	October 2019	All posters to be collated by 1 st November	Results and winners will be notified through East Renfrewshire Council.	N/A	All entries handed in on the 1 st November by hand by Mr. Connell.
Contact Police Scotland to secure visits during the Road Safety week	Mr. Connell and JRSO Committee.	September 2019	Via email	We will secure a visit from Police Scotland	N/A	With the help of PC Waters we had two visits from Police Scotland. We differentiated them so that the upper school got the Traffic Police. It was a really exciting visit.
Promote Road Safety Week 18 th 22 nd Nov	Mr. Connell and JRSO Members.	18 th – 22 nd November. Various activities throughout the week. Curriculum on GLOW.	Mr. Connell will provide feedback from for staff following week of learning.	Pupils will have learning experiences drawn from Road Safety Curriculum and enjoy JRSO assembly.	£10 for prizes	We had a fantastic Road Safety Week. The Committee compiled differentiated competitions for 1-3, 4-5 and 6 to 7. We have managed to get a new school JRSO mascot. Prizes were given out after our wonderful assembly. A great week was had by all.

- Action finished
- Action in progress
- Not started yet

JRSO Committee Action Plan

Date Range of this Plan: Sept 2019 – April 2020

Action	Who's in charge?	When will it be done by? (if ongoing, when did it start?)	How can we monitor it?	How will we know when we're successful?	How much will it cost?	Did it work? Any ideas for the future?
Meet to develop School Travel Plan	Mr. Connell, JRSO Members, Parents and Craig Dalziel	Term 2 – shared PPT to one drive	Regular communication with and feedback from all partners (staff, pupils, parents, library staff)	Pupils and Parents will be using Travel Plan to come to school.	N/A	
Set up Park and Stride	Mr. Connell and JRSO Members to contact Lidl	Term 2 and ongoing	Hands Up survey and will monitor it.	When we have a daily group of people using the car park at Lidl.	Insurance may be a cost but as yet unknown	
To write a Committee leaflet for parents	Mr. Connell and JRSO Members.	November 2019	Feedback from partners (management, staff, pupils, parents)	Webpage will display current leaflet and be displayed in School Foyer	N/A	



Monitoring and Review

5.1 Monitoring process

- Hands Up Survey Scotland.
- JRSO fortnightly meetings.
- Action Plan Termly review.
- Termly feedback to member of the Senior Management Team (HT, DHT)
- Annual 'handover' session with previous JRSO team.

5.2 Review Process

- Our School Travel Plan is an ongoing process of review and change.
- Additional measures are often implemented, and existing ones modified over time to suit the changing circumstances of the school year. These are incorporated into our travel plan at the discretion of the school, the JRSO Committee and JRSO Coordinator
- Our Plan is continually reviewed. We want to have a clear Action Plan that pupils can easily understand and highlight specific areas for improvement. It is updated at the start of every school year by the JRSO Committee and Coordinator.
- We are committed to always consider pupil travel needs arising from new developments in education and transport provision. It is our aim that this School Travel Plan will be revised as necessary to take account of these changes.



Travel Plan Agreement

We support the content of our School Travel Plan.



Name

Position

Signature

Frank Connell

JRSO Coordinator,
Class Teacher P6

Rob Lawson

Headteacher



Cycling Scotland

CYCLING SCOTLAND SCOTTISH CHARITY NO.SC029760



Curriculum

for Excellence



Links – cut and Keep

<p>Brief outline of what a travel plan is</p> <ul style="list-style-type: none"> • Why is the school are developing one • What is the overall vision. 	<p>LIT1-02a, 1-05a, 1-07a, 1-09a, 1-23a, 1-28a/1-29a, HWB 1-12a, 1-13a, 1-14a, 1-19a</p>
<p>Map of the area</p> <ul style="list-style-type: none"> • What is on your school's site – Nursery/Primary/Secondary/other 	<p>MTH 1-17a, 1-18a, 1-10a, SOC 1-14a</p>
<p>Promotion activities in the school</p> <ul style="list-style-type: none"> • Links/case studies 	<p>Literacy</p>
<p>Infrastructure in the school</p>	<p>Literacy</p>
<p>Consultation and surveys</p> <ul style="list-style-type: none"> • Hands Up Scotland Survey • Pupil/Parents/Staff Survey • Online Surveys • Collation 	<p>LIT1-05a, 1-07a, 1-09a, MTH 1-20a, 1-20b, 1-21a, 1-03a, 1-07c</p>
<p>Analysis and results</p> <ul style="list-style-type: none"> • How are people travelling now and how do you want them to travel in the future? • Past travel – have things changed over time – why? 	<p>LIT1-05a, 1-07a, 1-09a, MTH 1-20a, 1-20b, 1-21a, 1-03a, 1-07c</p>
<p>Action Plan/SMART (Specific, Measurable, Achievable, Realistic, Time-bound)</p> <ul style="list-style-type: none"> • What needs to happen/when and by whom • Could we put in an action plan table example? 	<p>HWB 0-18a, 1-20a, 1-25a, 1-27a, 1-28a, SOC 1-04a, TCH 1-01c, 1-04a, 1-04b, EXA 1-01a, 1-02a, 1-03a, 1-06a, MNU 1-10b, LIT1-24a, 1-26a</p>



