

## **Bullying Stops here!**

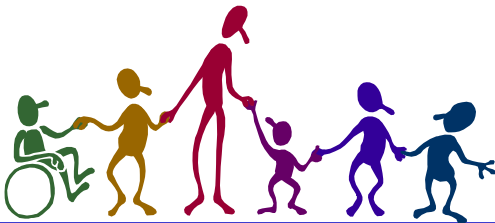
Woodfarm Cluster works hard to create a positive and supportive ethos.

You will know about or be involved in some of the following;

- Buddying
- Mentoring
- Peer mediation
- A Circle of Friends
- Worry Boxes
- Friendship stops
- Bother boxes
- Friendship benches
- Anti-bullying campaigns
- PSHE lessons
- Pupil Council work

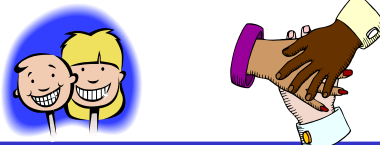
Every bullying incident is investigated. Your teacher will record each incident and the action taken to make sure you are safe and happy in school.

Every year, your school will report the number of incidents of bullying behaviour to East Renfrewshire.



## **Ways to Handle Bullying Behaviour**

- Don't ignore the bullying behaviour
- Tell someone you trust
- Try to keep calm
- Don't get angry
- Respect other people in what you say and do
- Do not spread rumours about people or share their secrets, including their phone numbers and passwords
- If someone insults or threatens you online or by phone, stay calm, ignore them and tell an adult
- Remember we should behave in a way that helps others enjoy their rights



## **Woodfarm Cluster**



It is every child's right to be protected from bullying behaviour. Children also have responsibility not to bully or harm each other.

**Anti-bullying Guidance for  
Children & Young People**

# What is bullying behaviour?

In our Cluster bullying behaviour is behaviour that is meant to hurt, frighten or upset another person.

isolation or being left out

written

racist

**Bullying behaviour can be.....**

cyber bullying

being forced to do something

verbal

physical

damage to belongings or theft

# Who can I tell?



**S**tart  
**T**elling  
**O**ther  
**P**eople

# What happens when I tell?

Your teacher will sit with you and ask the following questions:

- Who is involved?
- When and where did the incident take place?
- How did the incident start?
- What happened?
- Did anyone witness what happened?

Parents of all pupils involved will be told about the incident.

If you experience bullying behaviour, you will be supported. The pupil who shows bullying behaviour will also be supported and it will be made clear that this type of behaviour will not be tolerated.

If the behaviour involves a physical attack the campus police officer may be involved.

Remember there are lots of people in your school who will help you. We want you to be safe and happy in school.