

EASTWOOD HIGH SCHOOL

Raising Attainment & Improving Equity



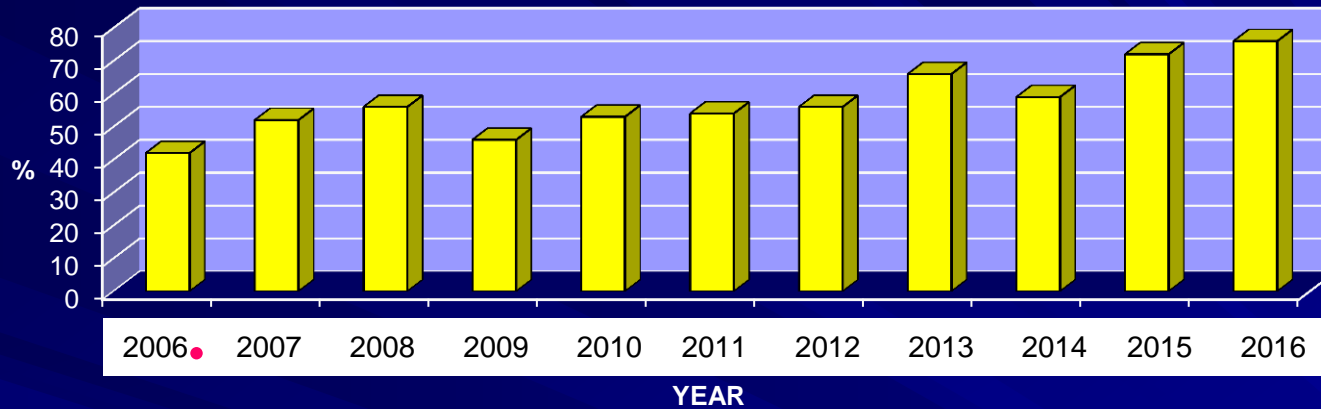
*“HIGHER STANDARDS
HIGHER EXPECTATIONS
GREATER OPPORTUNITY”*



Improving Senior Phase Attainment 1

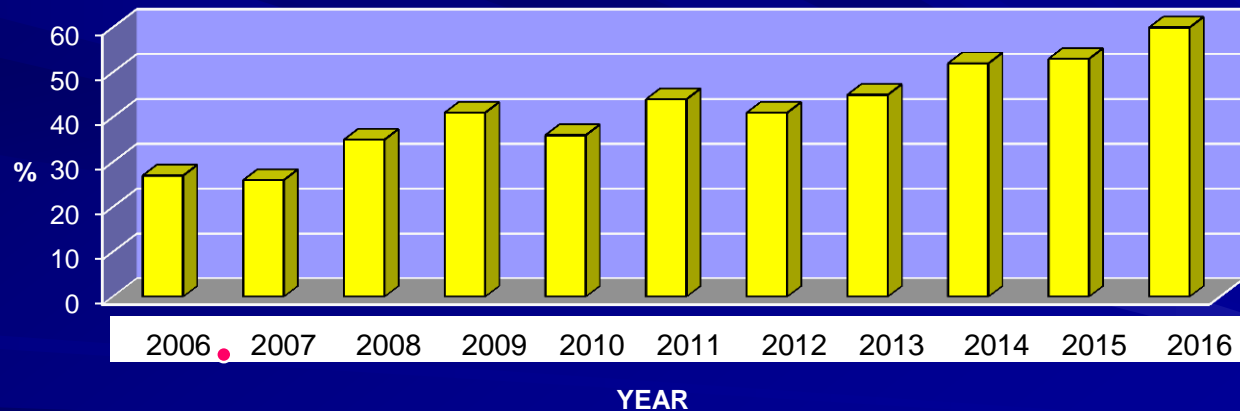
81% improvement

5+ National 5 in S4



131% improvement

3+ Highers in S5



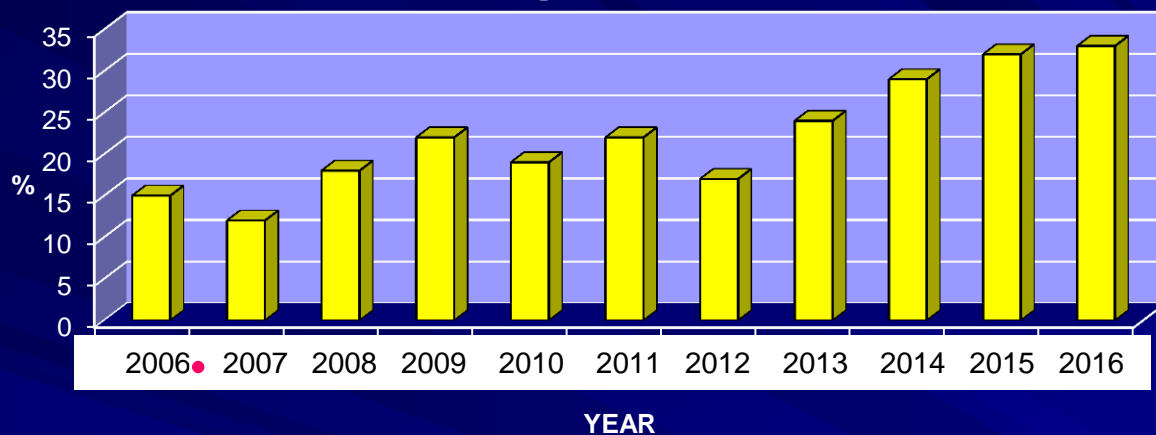
S4/S5 Value Added

2004	2005	2006	2007	2008	2009	2010	2011	2012	2013	2014	2015	2016
20	18	16	16	17	15	9	10	14.5	11.5	14	6	12

Improving Senior Phase Attainment 2

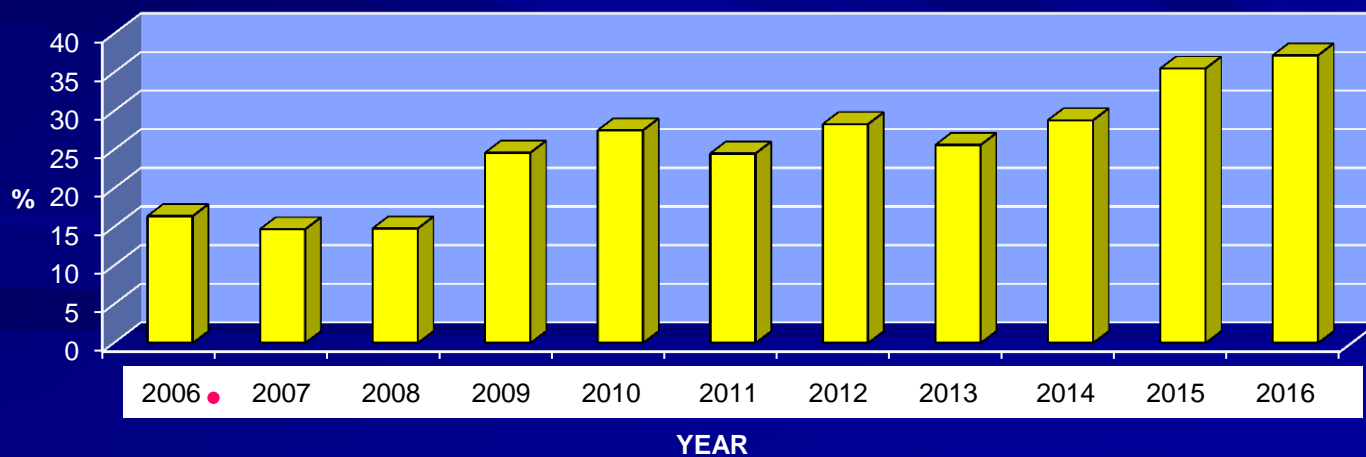
183% improvement

5+ Highers in S5



154% improvement

1+ Advanced Higher by S6

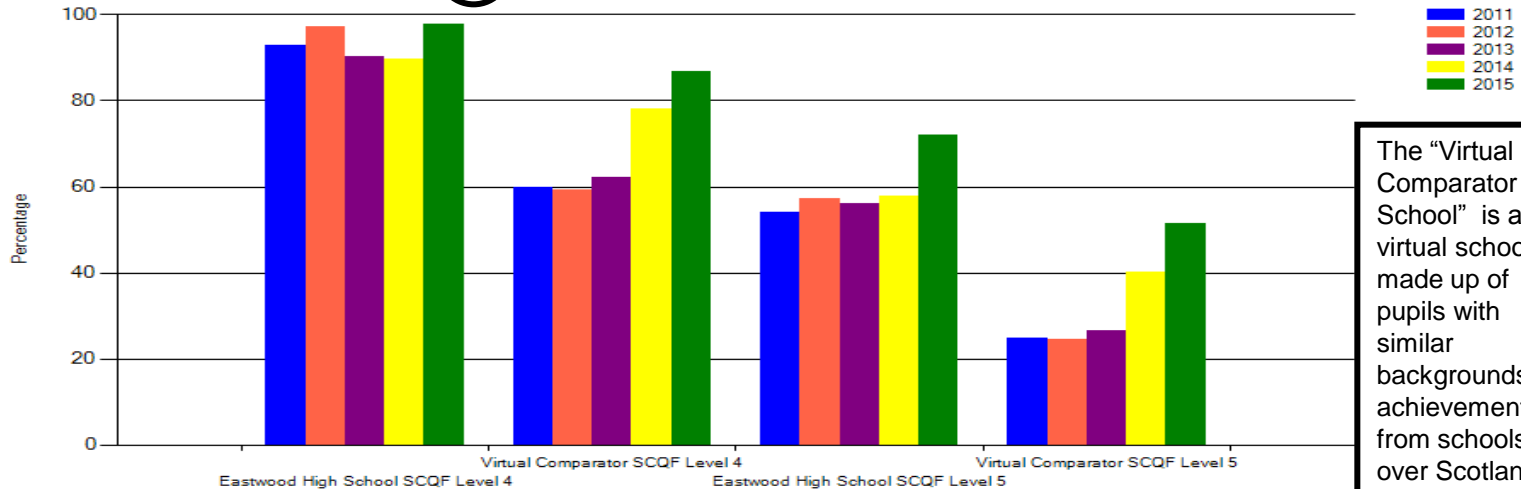


Improving Literacy and Numeracy 1

(S4)

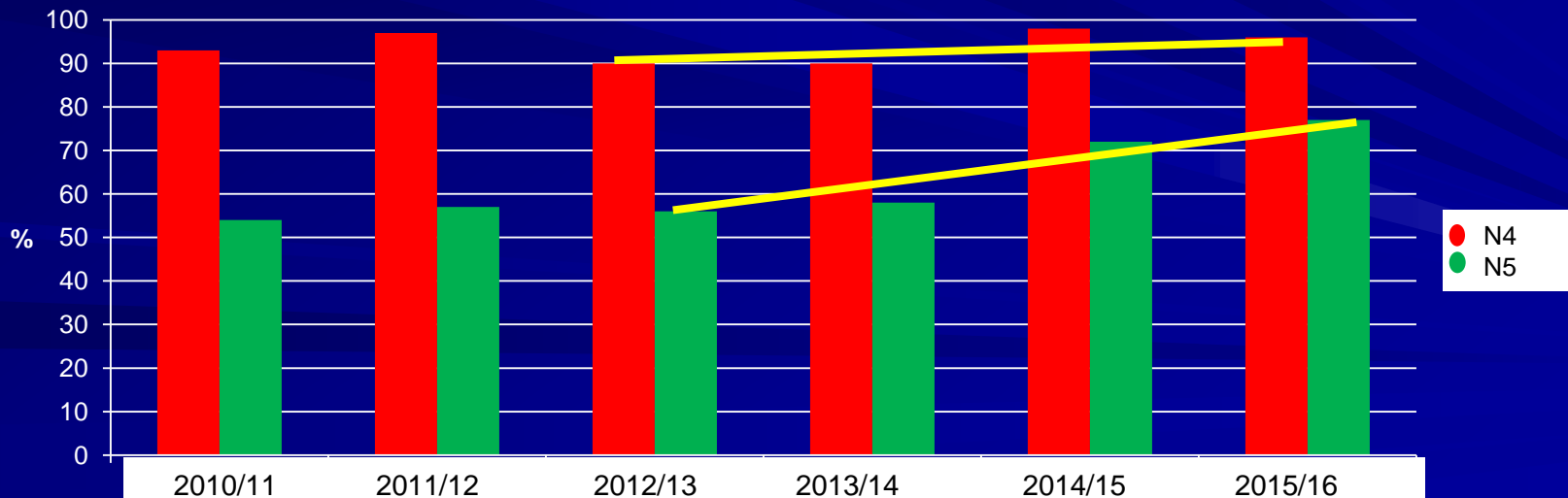
Improving attainment in literacy and numeracy

Percentage of Candidates Attaining Literacy and Numeracy



The "Virtual Comparator School" is a virtual school made up of pupils with similar backgrounds & achievement from schools all over Scotland

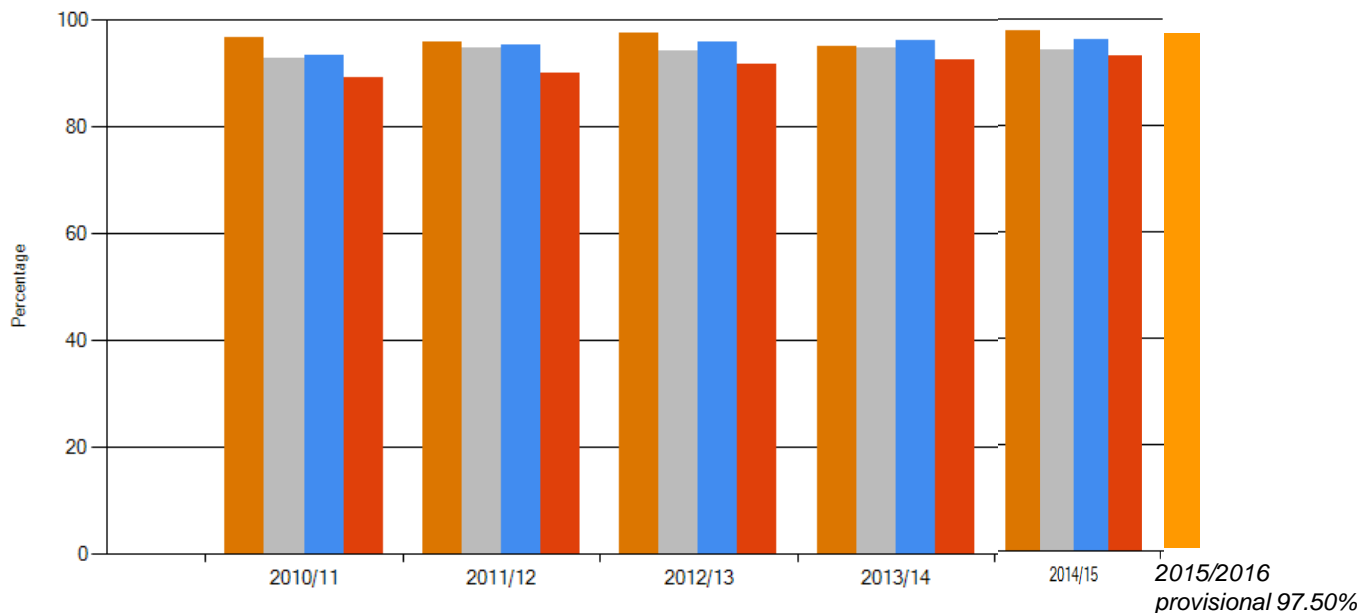
% S4 Achieving N4 & N5 Literacy and Numeracy



Improving Outcomes – Positive Destinations

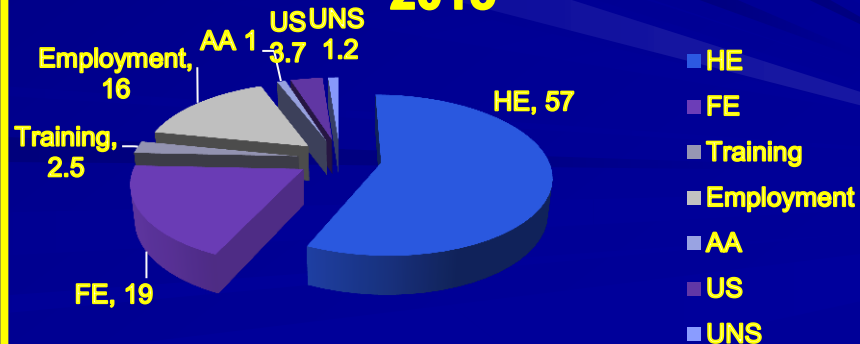
Increasing post-school participation

Percentage of School Leavers in a Positive Destination



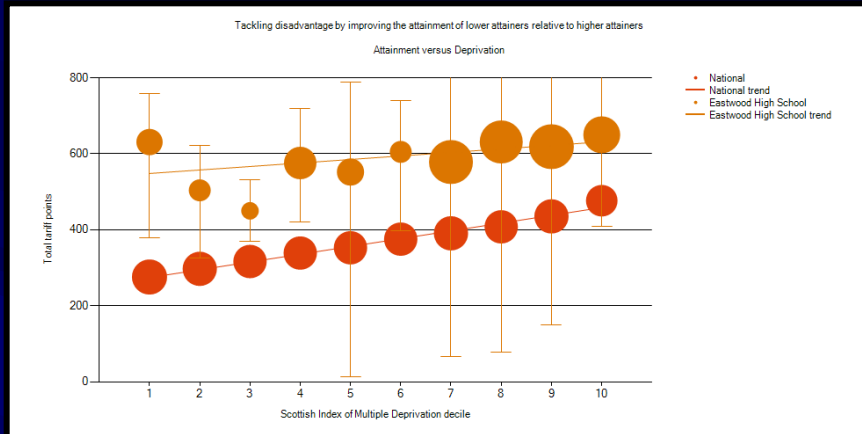
- Eastwood HS
- Virtual Comparator School
- East Renfrewshire
- National

EHS Leavers' Destinations 2015

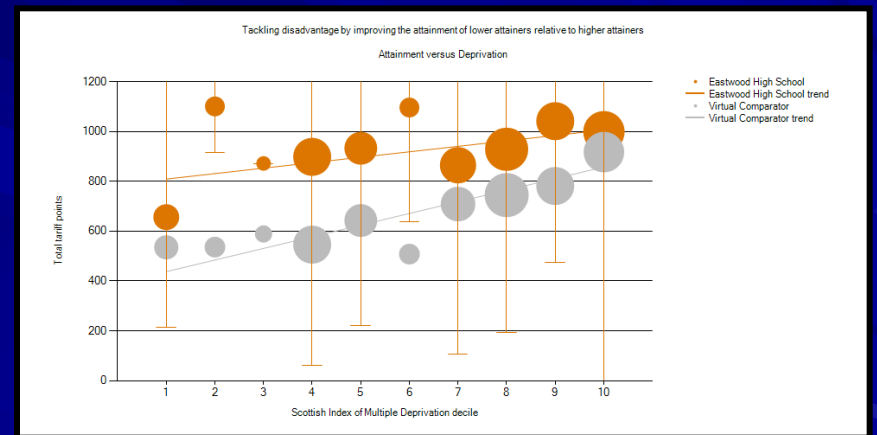
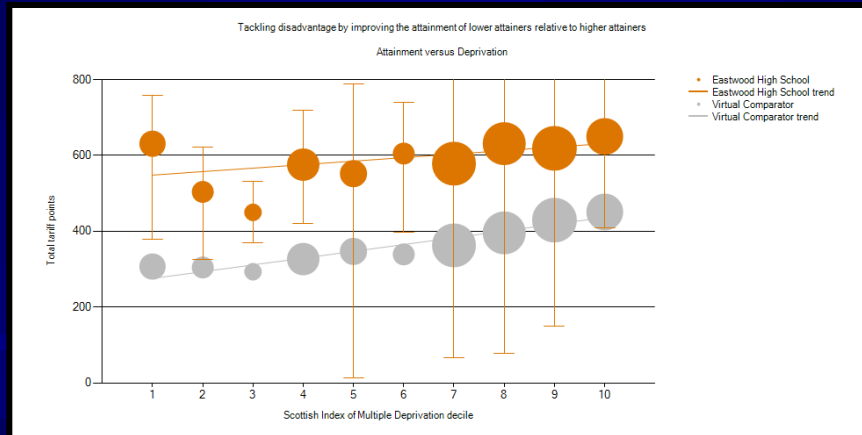
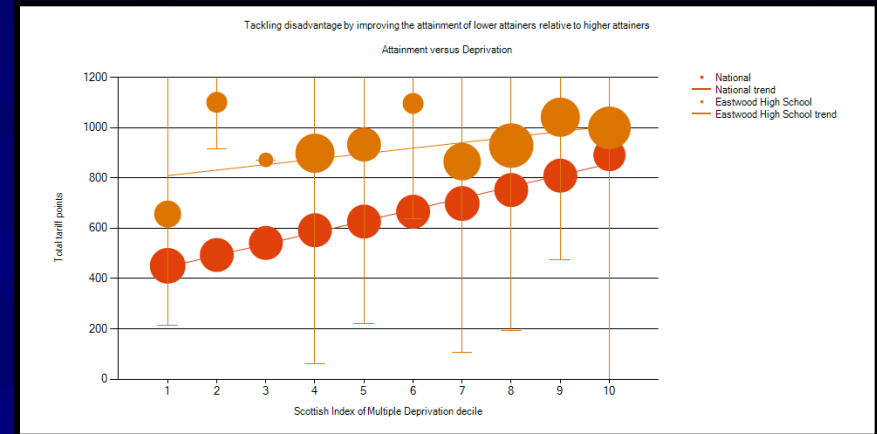


Attainment v Deprivation 1

S4



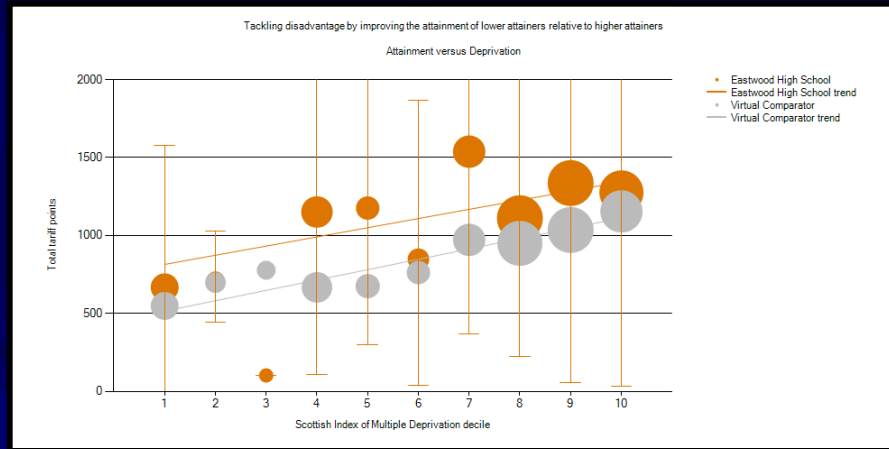
S5



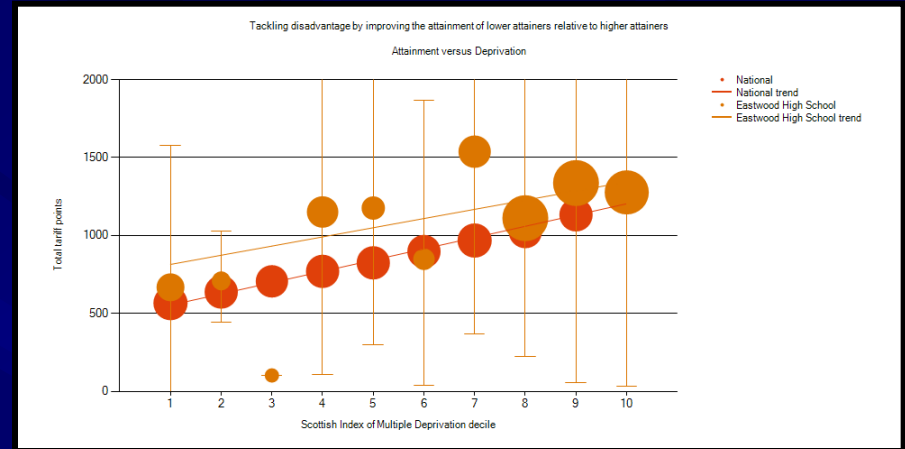
Not only do Eastwood pupils perform “much better than” their virtual comparator, the gradient of difference between SIMD 1 and SIMD 10 is considerably less at S4 and S5. (SIMD = Scottish Index of Multiple Deprivation where SIMD 1 represents the 10% least affluent households and SIMD 10 represents the 10% most affluent households)

Attainment v Deprivation 2

S6



S6

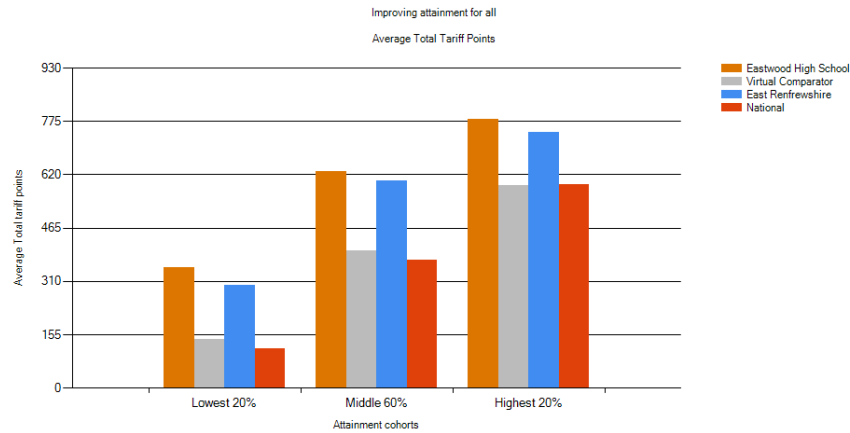


Not only do Eastwood pupils perform “better than” their virtual comparator and the national pattern, the gradient of difference between SIMD 1 and SIMD 10 is less at S6.

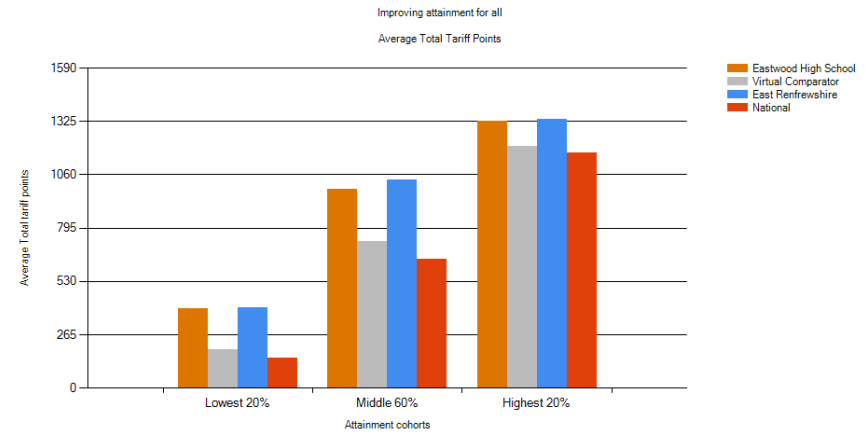
Improving Attainment for All

(20% lowest performing pupils/60% middle performing pupils/20% highest performing pupils against Eastwood's virtual comparator, East Renfrewshire schools & national pattern of attainment)

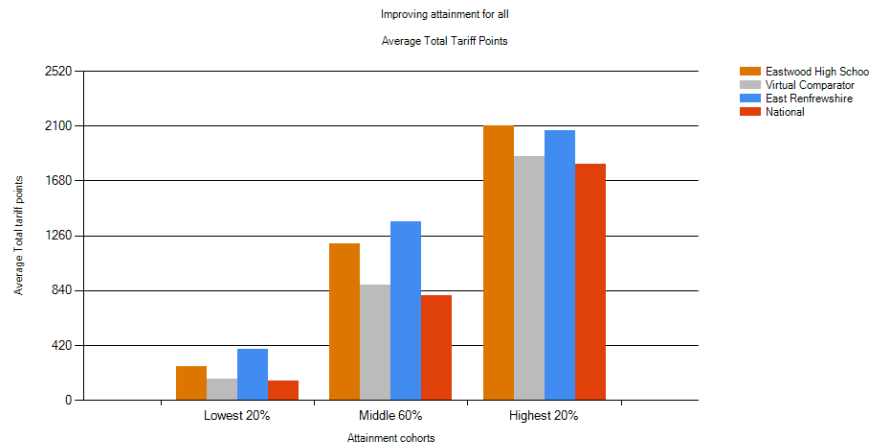
S4



S5

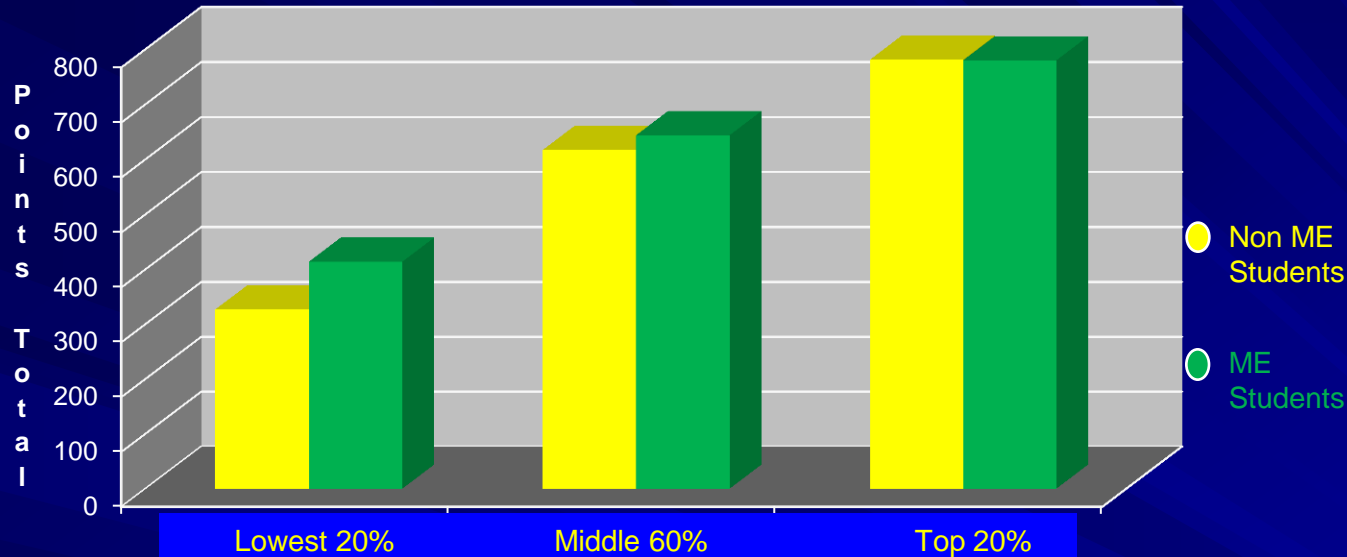


S6

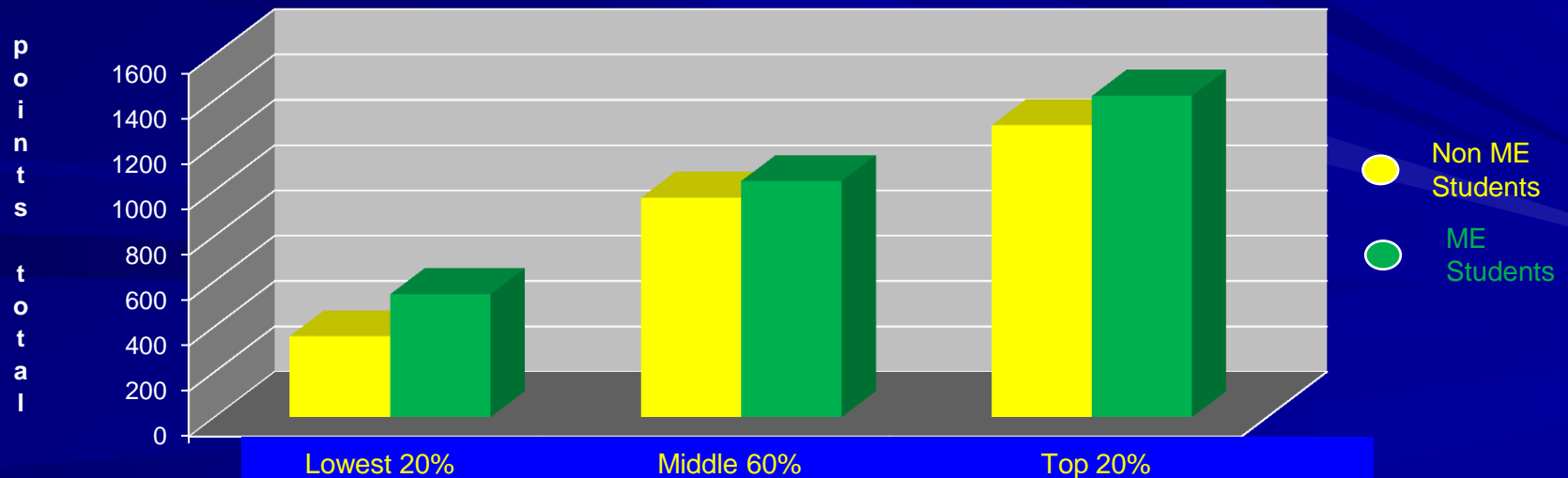


EHS Non Minority Ethnic v Minority Ethnic Pupil Performance 2016

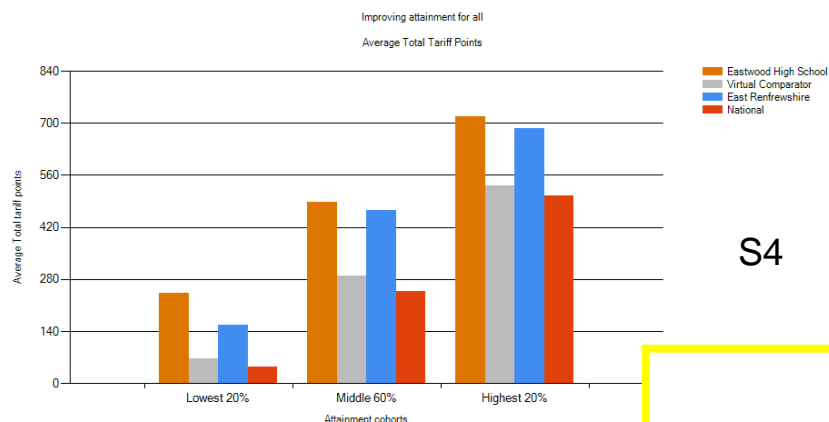
S4 Average Cumulative SQA Points Total 2016



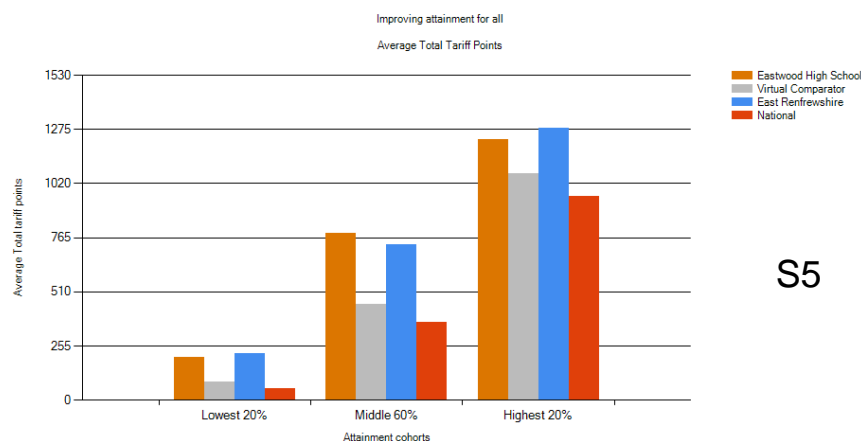
S5 Average Cumulative SQA Points Total



SQA Performance of Pupils with Additional Support Needs (2016)

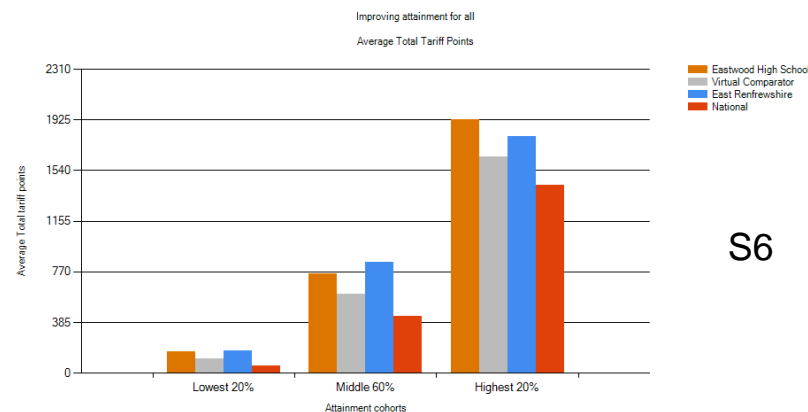


S4



S5

Pupils with ASN in Eastwood HS perform “much better than” similar pupils in other schools at S4, S5 & S6



S6