



S1/2 Parent Workshop

Understanding assessment in S1&S2

What do we mean by assessment?

Assessment refers to a range of class based creative experiences that learners take part in as part of learning as well as the more formal experiences that we recognise as exams which play a vital role in the senior phase.

What do we mean by assessment in S1 & S2?

- A test or an exam?
- Something we only do at the end of a unit, course or term?
- An activity that shows what the learners have memorised and new knowledge they have retained?
- The way we differentiate between who our cleverest learners are?
- The marks we use to create reports for parents?
- ✓ An opportunity for learners to demonstrate progress in key skills and knowledge
- ✓ An activity that is a natural part of the learning process
- ✓ Experiences where learners work together and collaborate effectively to demonstrate their understanding
- ✓ An opportunity to gauge how effective the learning has been for the teacher and the learner
- ✓ A process where learners provide and receive vital feedback
- ✓ The way in which learners develop understanding of their progress within the curriculum

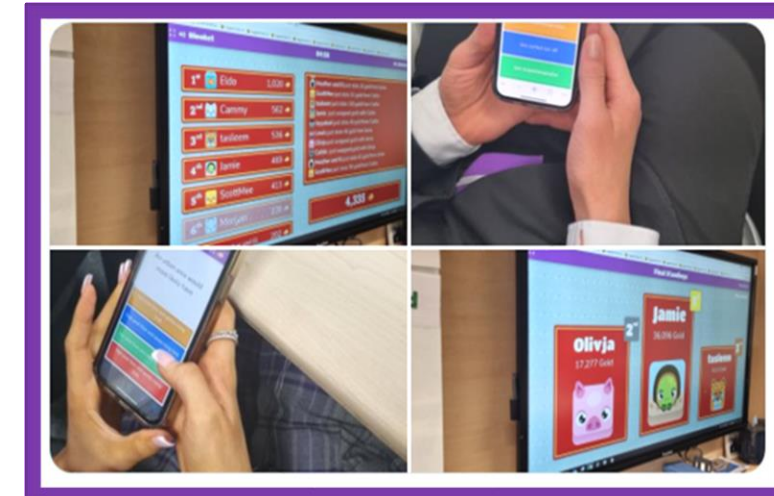
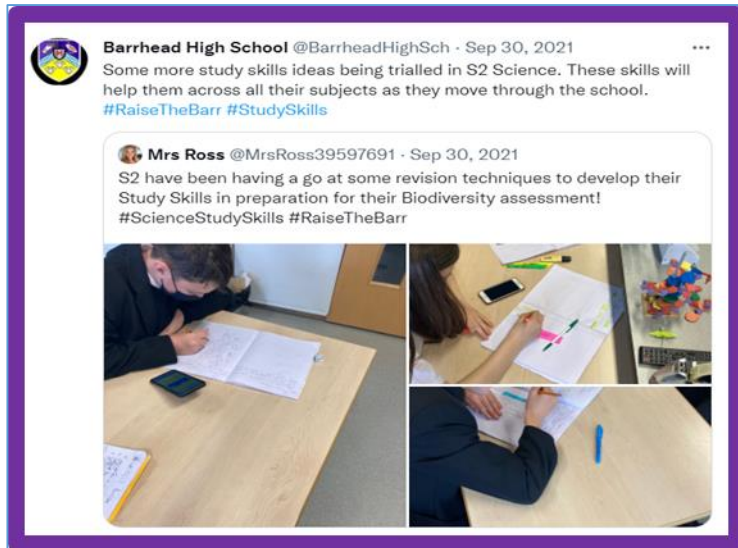
How do teachers design assessments?

In the BGE (S1&S2) teachers will share the purpose of learning for every lesson and design success criteria with learners that relate to the Es and Os for their subject area.

- All subjects have a **range of Es and Os** that describe the learning that needs to be achieved at each level
- Teachers will **select bundles of Es and Os** and create activities designed to facilitate learning
- All lessons have a **clear purpose and teachers will design success criteria with learners** that describe what learners have to do to be successful
- The assessment is valid because it allows learners to demonstrate their knowledge and apply it
- **The success criteria are used to reflect on the learning and assess progress.** They are also the means by which teachers and learners provide feedback on key aspects of learning

What does assessment look like in Barrhead High?

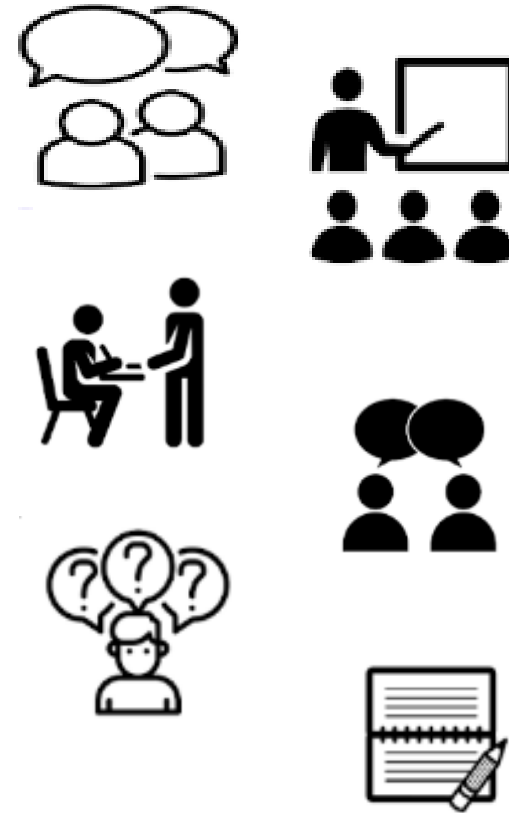
Assessment refers to a range of class based creative experiences that learners take part in *as part of* learning as well as the more formal experiences that we recognise as exams which play a vital role in the senior phase.



Feeding back to feed forward!

Feedback is the most vital aspect of assessment. Feedback can take many forms. In Barrhead High School we always focus on next steps!

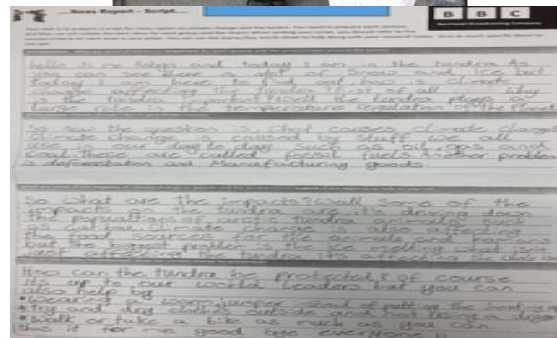
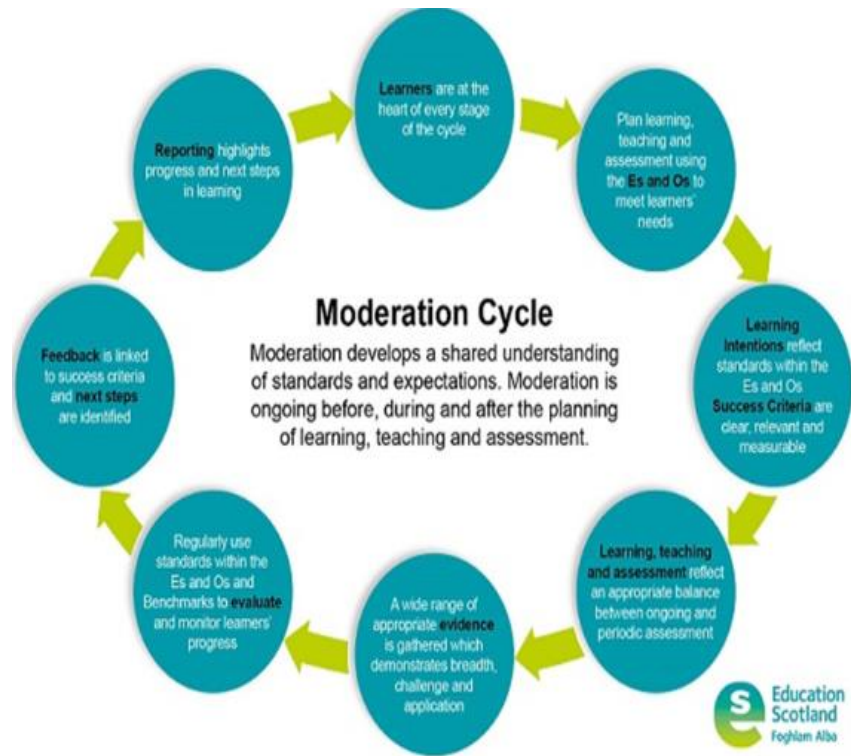
- Verbal Feedback
- Whole class feedback
- Peer feedback
- Live marking
- Questioning
- Written Feedback



In Barrhead we use assessment to *feed forward*!

Making judgements about a level!

When learners have covered a range of Es and Os and have demonstrated their learning, teachers will moderate a **wide range of evidence** before making a judgement about the level a learner has achieved.



Article 28 (right to education)
Every child has the right to an education.



Barrhead High School Learners' Rights

- ✓ All learners have the right to know the level of study they are undertaking ✓
- ✓ All learners have the right to know what they have to do to be successful ✓
- ✓ All learners have the right to make decisions about how they learn ✓
- ✓ All learners have the right to high quality feedback ✓
- ✓ All learners have the right to know how they are progressing across all stages of their learning and skills development ✓

The language of progress!

As learners develop their skills and knowledge of different subject areas, and demonstrate this progress in class, they will make progress through the levels of CfE

