

FOR OFFICIAL USE

--	--	--	--	--	--

F

	KU	RE
Paper 1		
Paper 2		
Total		

2500/27/01

NATIONAL
QUALIFICATIONS
2012

WEDNESDAY, 2 MAY
9.00 AM – 9.20 AM

MATHEMATICS
STANDARD GRADE
Foundation Level
Paper 1
Non-calculator

Fill in these boxes and read what is printed below.

Full name of centre

Town

Forename(s)

Surname

Date of birth

Day Month Year

--	--	--	--	--	--

Scottish candidate number

--	--	--	--	--	--	--	--	--	--

Number of seat

- 1 You may NOT use a calculator.**
- 2 Answer as many questions as you can.
- 3 Write your working and answers in the spaces provided. Additional space is provided at the end of this question-answer book for use if required. If you use this space, write clearly the number of the question involved.
- 4 Full credit will be given only where the solution contains appropriate working.
- 5 Before leaving the examination room you must give this book to the Invigilator. If you do not, you may lose all the marks for this paper.



Marks

1. Work out the answers to the following.

(a) $95 - 37$

WORKING

--	--

ANSWER

--

1

(b) $29.61 \div 7$

WORKING

--	--

ANSWER

--

1

(c) 25% of £120

WORKING

--	--

ANSWER

£

2

	KU	RE

Marks

KU	RE
2	

2. Anne is buying a house.
 She has to pay the fees shown below.

- Surveyor's fee £130
- Administration fee £450
- Lawyer's fee £550



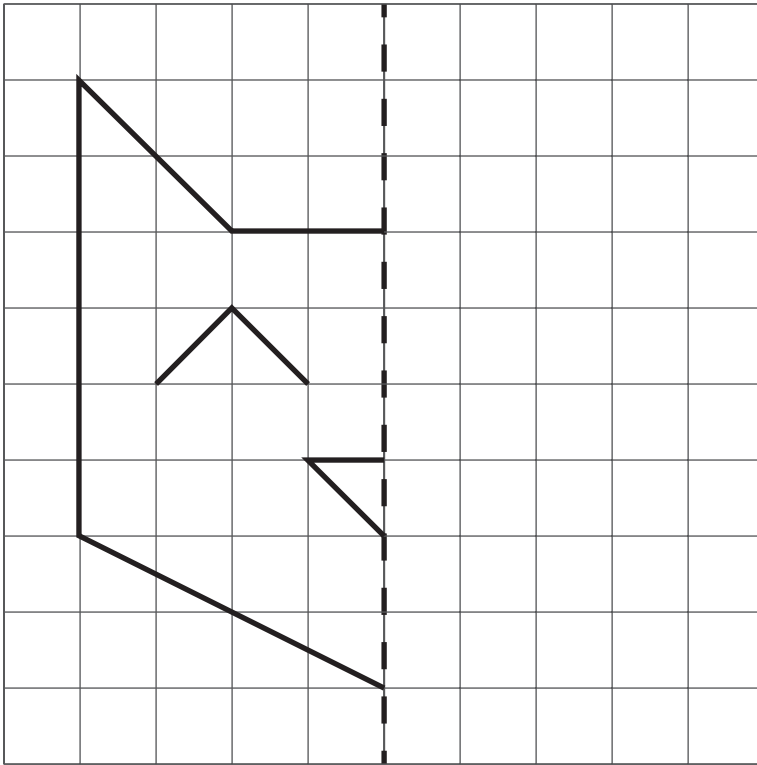
WORKING	
ANSWER	£

2

Marks

KU	RE
----	----

3. The broken line is an axis of symmetry.
Complete the diagram.



4

--	--

Marks

KU	RE

4. A jug contains 1250 millilitres of coffee.
Marie pours one fifth of the coffee into her cup.
How many millilitres of coffee will be in her cup?



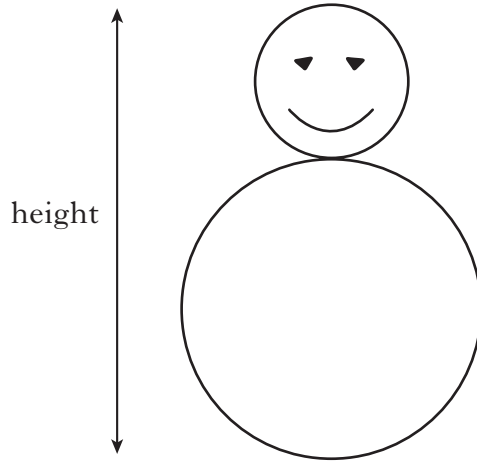
WORKING	
ANSWER	millilitres

2

Marks

KU	RE
----	----

5. Two circles are drawn to make a snowman as shown below.



The **diameter** of the body is 12 centimetres.

The **radius** of the head is 3 centimetres.

Calculate the height of the snowman.

WORKING

--	--

ANSWER

centimetres

3

Marks

KU	RE
1	
3	

6. Jed arrived home from school at 3.45 pm.

(a) Write 3.45 pm as a **24 hour time**.

ANSWER	
--------	--

(b) He started studying for his mathematics exam immediately.

He studied for 85 minutes.

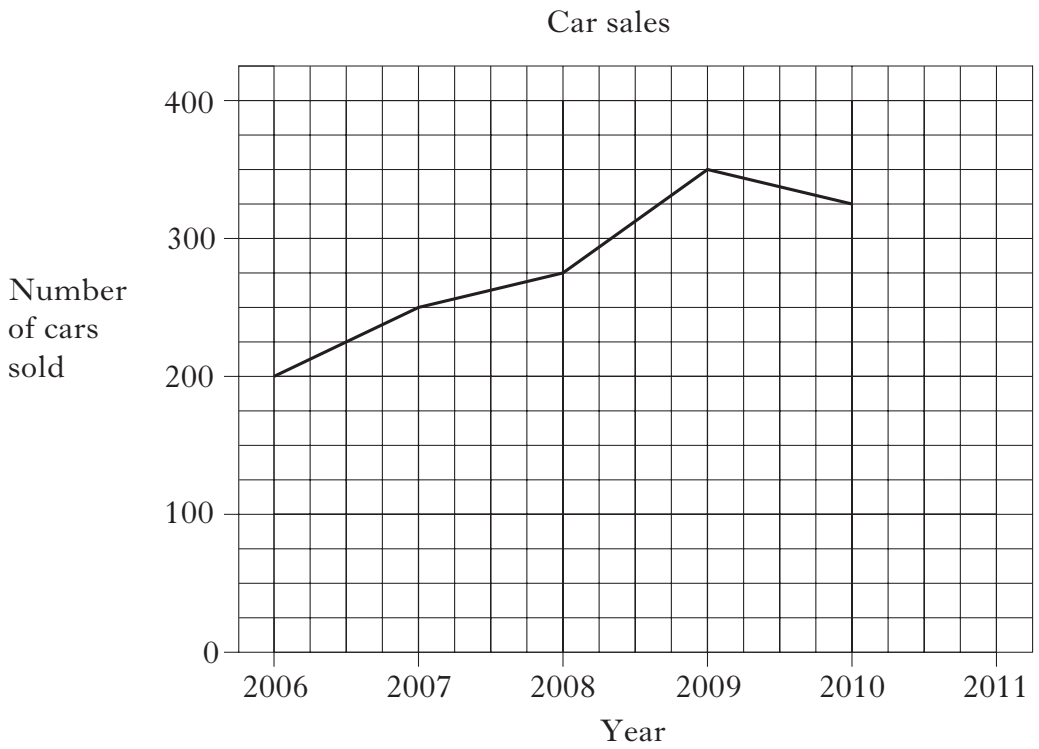
When did he finish studying?



WORKING	
ANSWER	

	KU	RE
1		
3		
1		

7. The graph shows the number of cars sold by a garage each year from 2006 to 2010.



- (a) How many cars were sold in 2007?

ANSWER		cars
--------	--	------

1

- (b) The number of cars sold in 2011 was double the number of cars sold in 2006.

Complete the graph to show the number of cars sold in 2011.

WORKING	

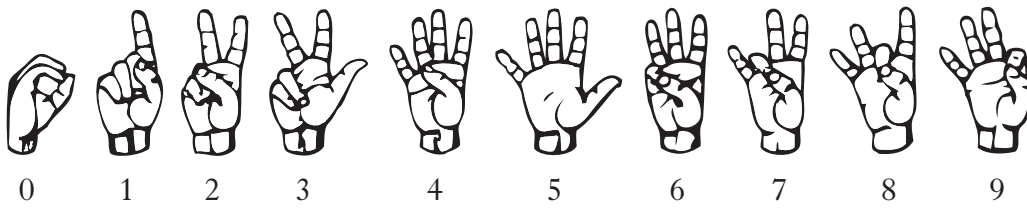
3

- (c) Describe the trend of the graph.

ANSWER	

1

8. The hand signs for numbers in the American Sign Language are shown below.

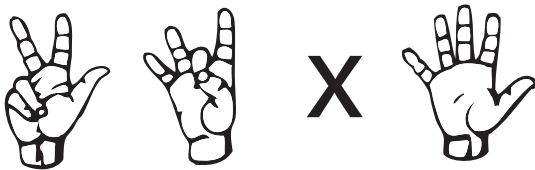


A teacher uses the hand signs below to get his class to work out 79×4 .



WORKING	79
	$\times 4$
	<u>316</u>
ANSWER	316

Write down the working and answer for the hand signs shown below.



WORKING	
ANSWER	

4

[END OF QUESTION PAPER]

ADDITIONAL SPACE FOR ANSWERS

[BLANK PAGE]

[BLANK PAGE]

FOR OFFICIAL USE

--	--	--	--	--	--

F

KU RE

--	--

2500/27/02

NATIONAL
QUALIFICATIONS
2012

WEDNESDAY, 2 MAY
9.40 AM - 10.20 AM

MATHEMATICS
STANDARD GRADE
Foundation Level
Paper 2

Fill in these boxes and read what is printed below.

Full name of centre

Town

Forename(s)

Surname

Date of birth

Day Month Year

--	--	--	--	--	--

Scottish candidate number

--	--	--	--	--	--	--	--	--	--

Number of seat

- 1 You may use a calculator.**
- 2 Answer as many questions as you can.
- 3 Write your working and answers in the spaces provided. Additional space is provided at the end of this question-answer book for use if required. If you use this space, write clearly the number of the question involved.
- 4 Full credit will be given only where the solution contains appropriate working.
- 5 Before leaving the examination room you must give this book to the Invigilator. If you do not, you may lose all the marks for this paper.



Marks

1. Lorna can type 4 pages of text in 24 minutes.
At the same rate, how many minutes will it take
Lorna to type 7 pages?



WORKING	
ANSWER	minutes

3

KU	RE

Marks

KU	RE
1	
2	

3. Here is a calendar for the month of November.

Mon	Tue	Wed	Thu	Fri	Sat	Sun
	1	2	3	4	5	6
7	8	9	10	11	12	13
14	15	16	17	18	19	20
21	22	23	24	25	26	27
28	29	30				

(a) What day is November 15th?

ANSWER	
--------	--

1

(b) What day is December 11th?

WORKING	
ANSWER	

2

Marks

4. Frank did a sponsored walk to raise money for charity.
 He was sponsored for £9 per mile.
 He walked 16 miles.
 How much money did Frank raise for charity?



WORKING	
ANSWER	£

KU	RE
2	

Marks

KU RE

6. The population of Glasgow is 580 000.
5% of the population are children below school age.
Calculate how many children are below school age.



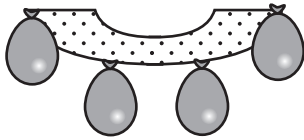
WORKING	
ANSWER	children

2

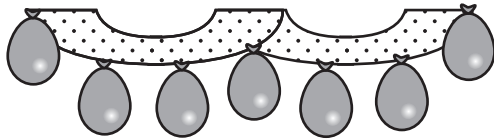


	KU	RE
4		
2		

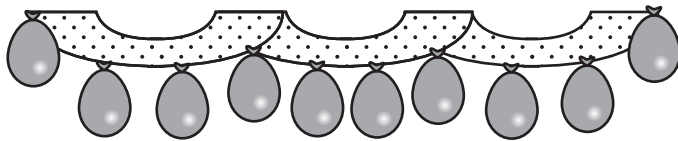
7. The Party Company uses balloons to make decorations in different sizes. Some of the decoration sizes are shown below.



Decoration size 1



Decoration size 2



Decoration size 3

(a) Complete this table.

Decoration size	1	2	3	4	5	6		11
Number of balloons	4	7						

WORKING

4

(b) Write down a rule for finding the number of balloons if you know the decoration size.

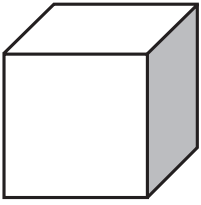
RULE

2

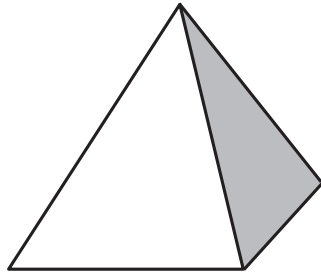
Marks

KU RE

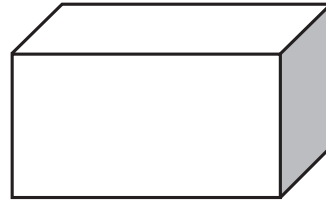
8. Some 3D shapes are shown below.



Cube

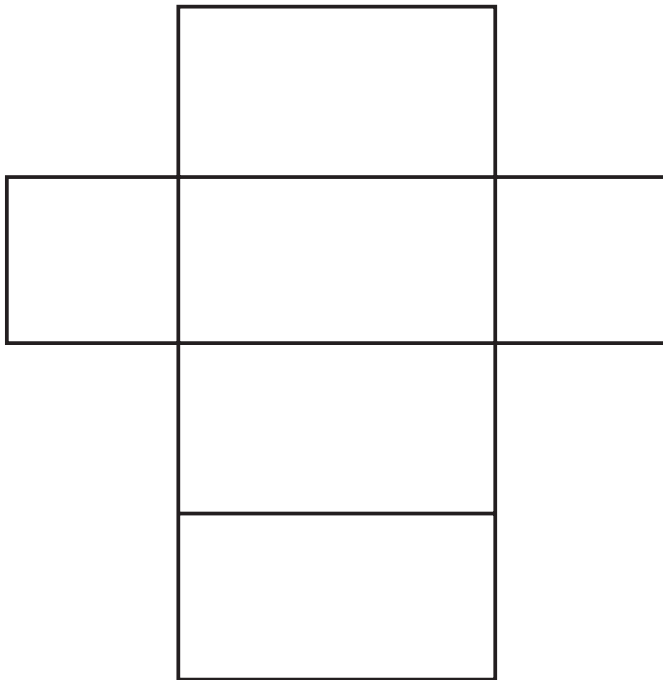


Pyramid



Cuboid

This is the net for one of these 3D shapes.



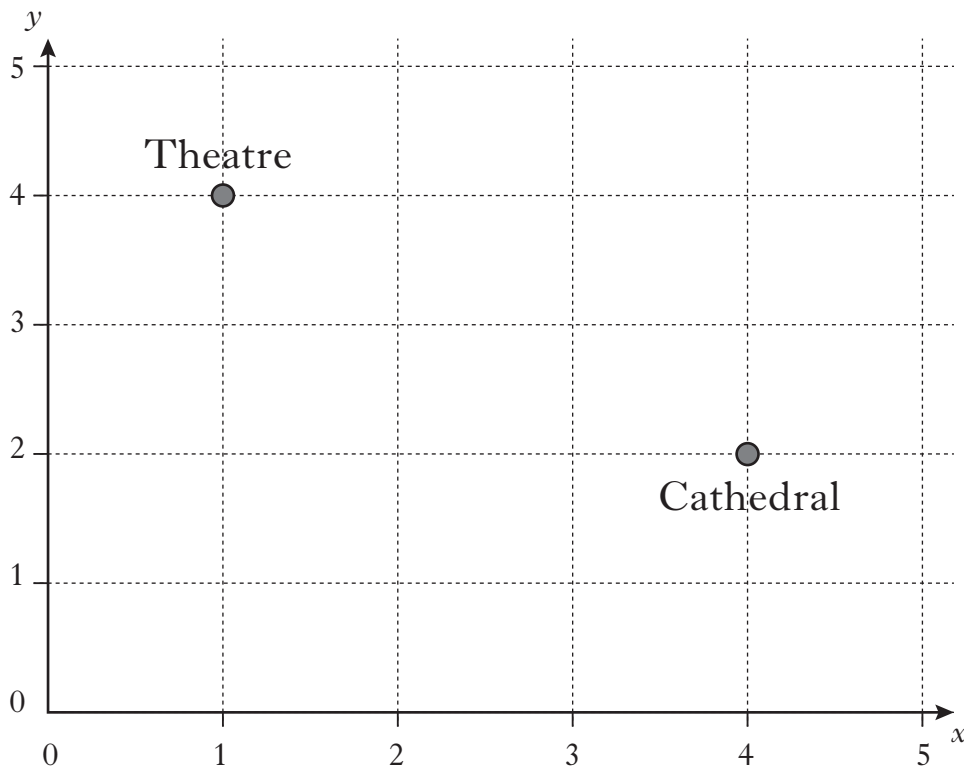
Which 3D shape has this net?

ANSWER

1

	KU	RE
1		
2		

9. The plan below shows some landmarks in the town centre.
The theatre is at position (1, 4).



- (a) Write down the position of the cathedral.

ANSWER	(,)
--------	-----------------

- (b) The theatre and the cathedral are the **opposite** corners of a rectangle.
Mark two crosses on the grid to show the other two corners of the rectangle.

Marks

KU RE

10. The same mobile phone is sold in five different shops for the prices shown below.

£70 £77 £85 £93 £110

Calculate the mean price of the mobile phone.



WORKING

ANSWER £

4

KU	RE
1	
2	

11. When John started work, his company gave him an employee number.
It was **08 / 367**.
This indicated that he started as an employee in the year **2008** and he was the **367th** person employed by the company.
When Sidra joined the company, she was given an employee number of **10 / 528**.

(a) In which year did Sidra join the company?

ANSWER	
--------	--

1

(b) Peter was the next person employed by the company.
He started one year after Sidra.
What was Peter's employee number?

WORKING	
ANSWER	

2

Marks

KU	RE



12. The top of a table tennis table is in the shape of a rectangle.

The table has a breadth of 150 centimetres.

(a) Write the breadth in metres.

WORKING	
ANSWER	metres

2

(b) The table has a length of 2·7 metres.

Calculate the area of the top of the table in square metres.

WORKING	
ANSWER	square metres





2

13. Aileigh has the following coins in her purse.



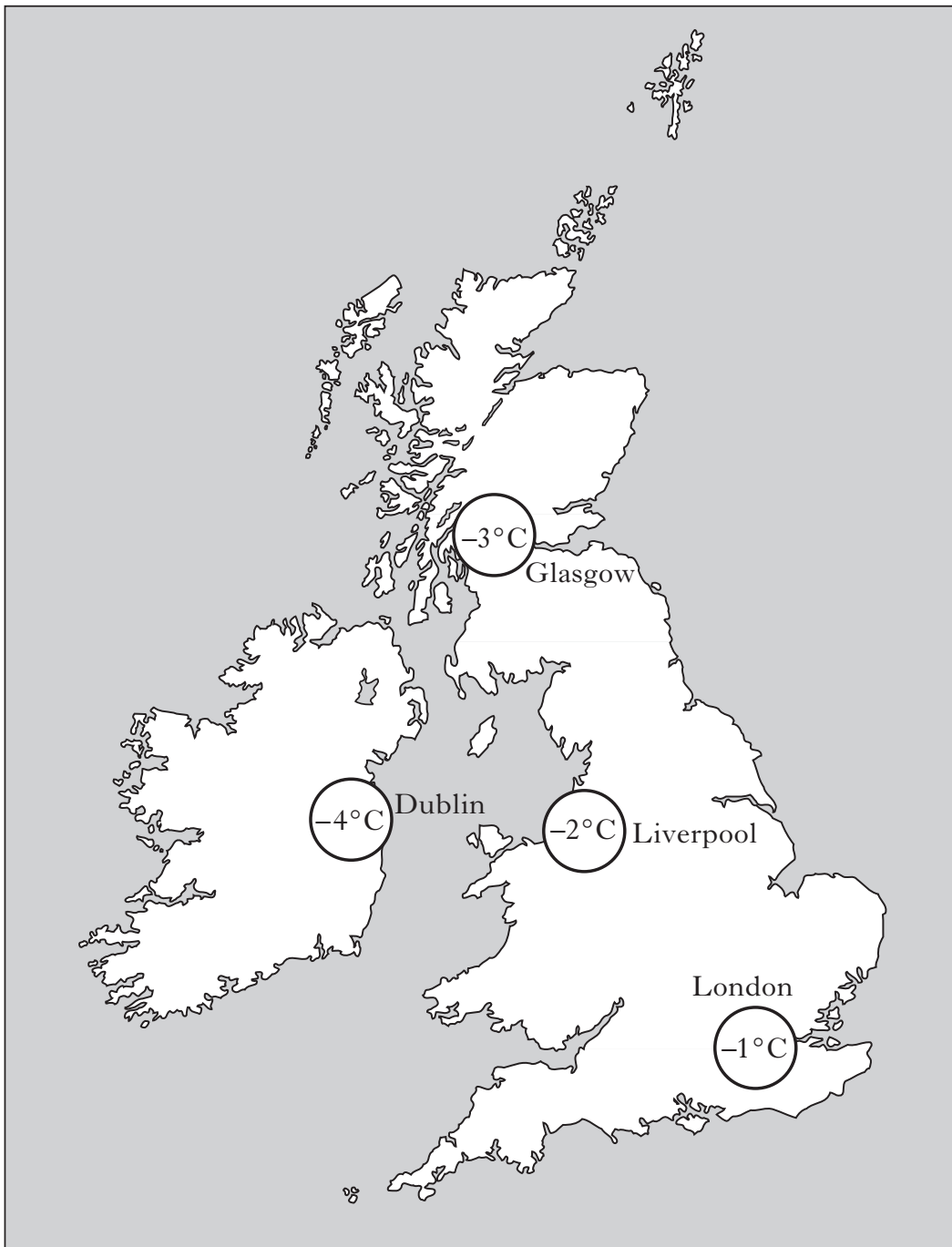
One way of making a total of 30 pence **using the coins in her purse** is shown in the table below.

Complete the table to show 5 other ways that Aileigh can make a total of 30 pence **using the coins in her purse**.

				
1	0	2	0	0

3

14. One December night, the temperatures in four cities were recorded. The results are shown on the map below.



Which city was warmest?

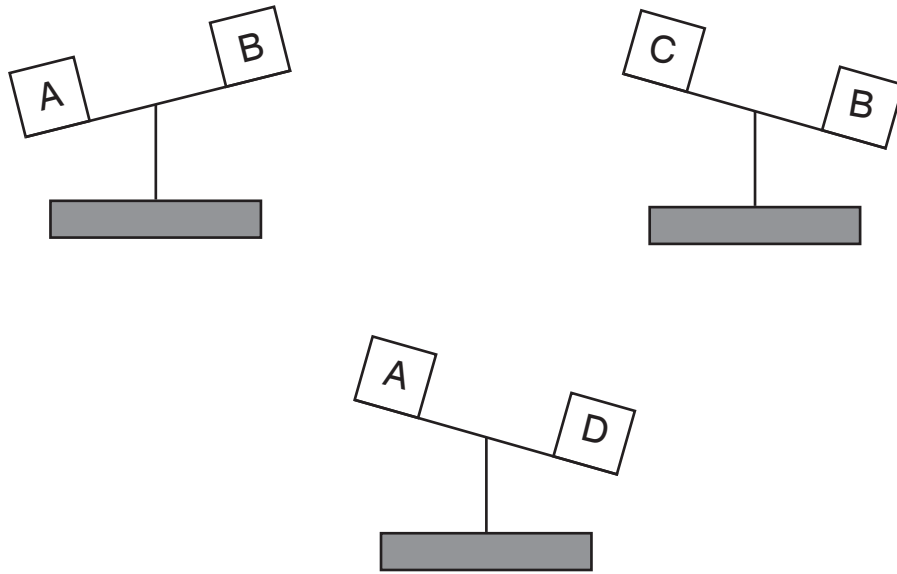
ANSWER	
--------	--

1

Marks

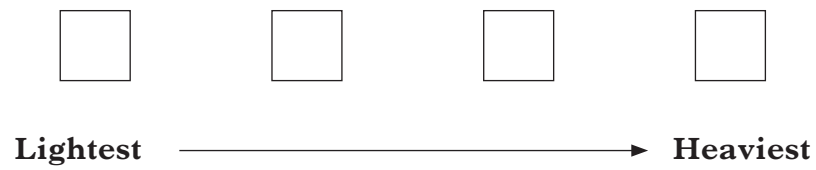
KU	RE

15. Boxes labelled A, B, C and D are placed on the scales as shown.



The boxes are then placed in order from **lightest** to **heaviest**.

Label the boxes.



WORKING	
---------	--

3

16. The formula below is used to change measurements in inches to measurements in centimetres.

$$\text{Measurement in centimetres} = 254 \times \text{Measurement in inches} \div 100$$

Use the formula to change a measurement of 70 inches to centimetres.

WORKING

--	--

ANSWER

centimetres

Marks

KU	RE

2

KU	RE

17. (a) A bookseller buys 200 books for £4.20 each.
How much did the books cost him altogether?



WORKING	
ANSWER	£

2

- (b) He sells 120 of the books for £5.50 each and the remaining books for £3.50 each.

Did he make a profit or a loss?

You must give a reason for your answer.

WORKING	
ANSWER (WITH REASON)	

4

ADDITIONAL SPACE FOR ANSWERS

[BLANK PAGE]