



KILMARNOCK ACADEMY

Our Curriculum *(Curriculum Rationale)*



2025/ 26

Article 28: Right to Education

Every child has the right to an education. Primary education must be free and different forms of secondary education must be available to every child. Discipline in schools must respect children's dignity and their rights. Richer countries must help poorer countries achieve this.

Our Curriculum – Our Policy Context

Our curriculum rationale was re-devised to take account of the most recent Curriculum for Excellence (CfE) and Senior Phase narratives.

The current Curriculum for Excellence and Senior Phase policy contexts in Scotland are defined by a phase of **significant reform** following independent reviews. The core philosophy of CfE remains in place, but our system is undergoing a structured "improvement cycle" with key changes to qualifications and assessment methods. At Kilmarnock Academy we feel it important to capture where the totality of our curriculum is at present and be mindful of strategic and national developments ahead.

Current Curriculum for Excellence (CfE) Policy Context

The CfE, implemented in 2010, remains the national curriculum for learners aged 3-18, focusing on developing four capacities: **successful learners, confident individuals, responsible citizens, and effective contributors**.

The Four Capacities



The current policy context is shaped by:

- **Acceptance of OECD Review Findings:** A 2021 independent review by the OECD acknowledged CfE's inspiring philosophy but identified inconsistencies in its implementation, particularly the transition from the Broad General Education (BGE) to the Senior Phase.
- **Curriculum Improvement Cycle (CIC):** In response to the reviews, the Scottish Government and Education Scotland initiated the CIC in early 2024 to systematically evolve the curriculum. This involves:
 - Updating all eight curricular areas in a phased approach, starting with numeracy and mathematics in the 2024/2025 academic year, with updated guidance expected from August 2026.
 - Enhancing clarity on the role of knowledge and progression through the curriculum levels.
- **Focus on Literacy, Numeracy, and Health & Wellbeing:** These three areas continue to be the responsibility of all (RoA) staff and are central to our curriculum at all stages.
- **Emphasis on Interdisciplinary Learning (IDL):** A refreshed working group is focusing on clarifying the place of IDL in secondary schools to ensure an equitable and high-quality offer for all young people. At Kilmarnock Academy we are making changes to incorporate genuine IDL as an integral part of our curriculum offer as opposed to a previously contrived approach.

Current Senior Phase Curriculum Policy Context

The Senior Phase (S4 to S6) is the stage where young people work towards qualifications on the Scottish Credit and Qualifications Framework (SCQF). The current policy aims to make this phase more flexible, equitable, and less reliant on traditional high-stakes exams. In addition, at Kilmarnock Academy we aim to diversify our qualifications portfolio beyond the limitations of the current Scottish Qualifications Authority, soon to be replaced by Qualifications Scotland.

We believe passionately that 'Our Curriculum' should be born from meeting our young people's needs and be aligned to labour market opportunity rather than driven by staffing limitations or the traditional SQA subject offer.

At Kilmarnock Academy we believe in getting best value for our buck in terms of our staffing model and pupil qualification opportunity within courses. This is exemplified later in this document.

Key policies and reforms for the Senior Phase we take cognisance of include:

- **Qualification and Assessment Reform:** A major reform package is underway to rebalance assessment methods and reduce reliance on final exams.
 - **Removal of Written Exams:** External written examinations are being removed from some practical subjects, with implementation starting in the 2025/26 academic year.
 - **Modularisation Exploration:** The potential for organising National Qualifications (National 5, Higher, Advanced Higher) into modules is being explored to offer greater flexibility for learners.
 - **Rationalisation of Qualifications:** The SQA has been tasked with streamlining the vast number of available qualifications to create clearer and more coherent learner pathways, starting with subjects in Creative, Hospitality, Sport, Technology, Engineering, and Construction sectors. This fits very well with our own Ayrshire Growth Deal (AGD).
- **Digital Learner Profile:** A digital tool has been launched and embraced at Kilmarnock Academy to record and recognise a young person's full range of skills, wider achievements, and qualifications, addressing the need for parity of esteem between different types of learning.
- **Progression and Pathways:** There is a continued focus on ensuring a seamless transition from the BGE to the Senior Phase and then to "positive destinations" beyond school'.
- **New Governing Bodies:** The *Education (Scotland) Act 2025* provides for the establishment of new independent bodies to oversee qualifications (Qualifications Scotland) and inspection (His Majesty's Chief Inspector of Education in Scotland) to provide stable and clear leadership for schools and the way forward relating to how our curriculum should support our young people.

In Summary, references to a rapidly changing world highlight the fact that Our Curriculum should not be a fixed policy statement taken as a permanent overview of the structures we use to deliver the curriculum. Rather, our rationale is a working document, which takes account of our local context against the rapidly changing world our young people are shaped by, and in turn, can shape. As such, it should be reviewed and revised on an annual basis to outline the areas of the curriculum we are working to develop session by session. This overtaken through internal quality assurance processes.

Our Curriculum – Our Vision & Values

Kilmarnock Academy strives, as a community, to ensure that all young people reach their full potential and have opportunities to achieve qualifications, learn new skills, develop as individuals and gain key employability experiences within a nurturing environment.

Our values underpin all that we do at Kilmarnock Academy. The values, following whole school community consultation, were revamped and modernised in 2025. They have been re-defined and provide new meaning to our current pupil, parent and staff groups. They remain the backbone of not just Our Curriculum but also Our Red Coin Reward System, Right's Respecting Schools approaches, Wellbeing and positive attendance strategies, our Respectful Relationships Policy, Qualification Presentation Policy and of course our Learning and Teaching policy - all of which support, directly or indirectly, Our Curriculum.



Our Curriculum – Our Reality



Pupils Residing in SIMD

1 & 2

Kilmarnock Academy	34.0%
East Ayrshire	32.2%
National	21.6%



Pupils Registered for Free School meals

Kilmarnock Academy	16.9%
East Ayrshire	17.6%
National	18.2%



Attendance

Kilmarnock Academy	87.0%
East Ayrshire	85.7%
National	88.4%



Pupils with ASN

Kilmarnock Academy	27.2%
East Ayrshire	34.8%
National	46.1%



Pupils who are Care Experienced

Kilmarnock Academy	2.4%
East Ayrshire	2.1%
National	Not Available



Exclusion Incidents per 1000 Pupils

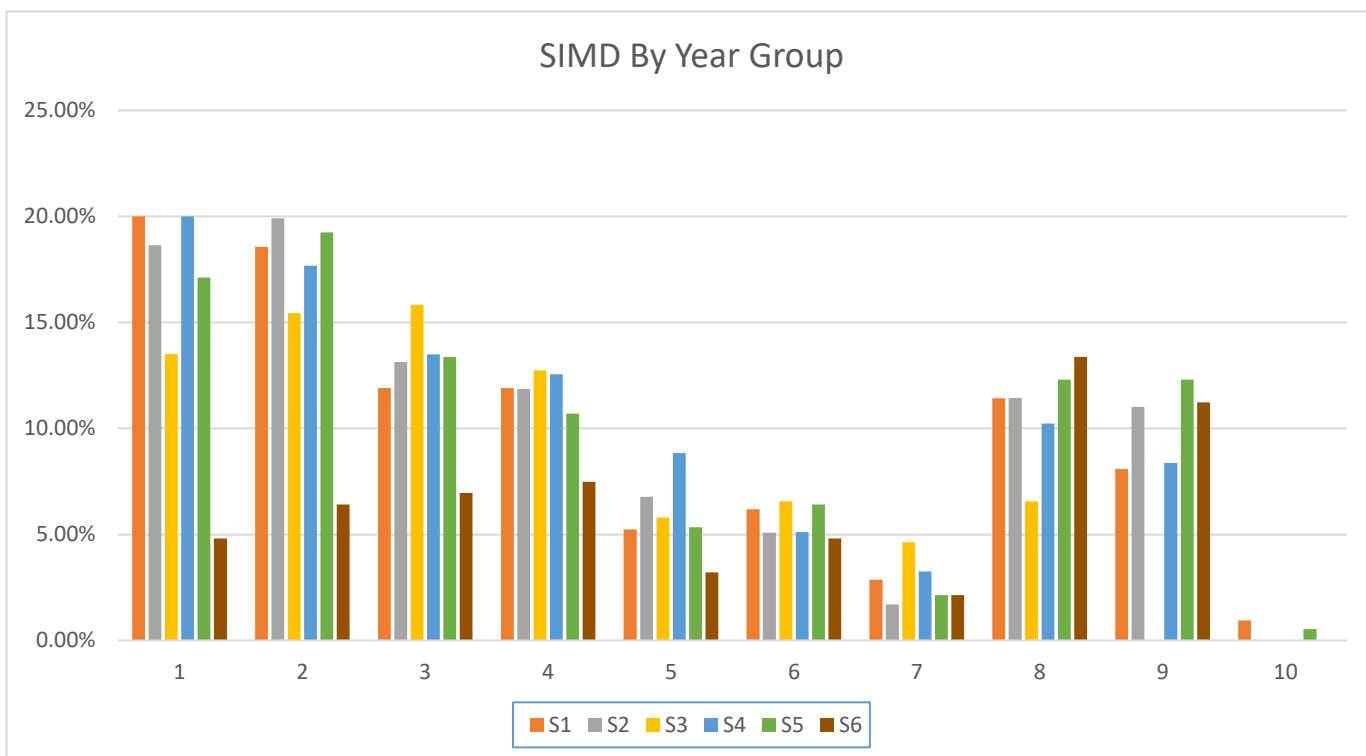
Kilmarnock Academy	10.2
East Ayrshire	47.5
National	26.9

Source: 2025/ 26 census (except Attendance & Exclusions which are 2024/ 25)

- December 2025

Our SIMD Profile

SIMD	1	2	3	4	5	6	7	8	9	10	0
PUPILS	205	212	164	147	77	74	37	154	134	5	18
%	16.71%	17.28%	13.37%	11.98%	6.28%	6.03%	3.02%	12.55%	10.92%	0.41%	1.47%



SIMD%	1	2	3	4	5	6	7	8	9	10	0
S1	20.00%	18.57%	11.90%	11.90%	5.24%	6.19%	2.86%	11.43%	8.10%	0.95%	2.86%
S2	18.64%	19.92%	13.14%	11.86%	6.78%	5.08%	1.69%	11.44%	11.02%	0.00%	0.42%
S3	13.51%	15.44%	15.83%	12.74%	5.79%	6.56%	4.63%	6.56%	0.00%	0.00%	15.44%
S4	20.00%	17.67%	13.49%	12.56%	8.84%	5.12%	3.26%	10.23%	8.37%	0.00%	0.47%
S5	17.11%	19.25%	13.37%	10.70%	5.35%	6.42%	2.14%	12.30%	12.30%	0.53%	0.53%
S6	7.96%	10.62%	11.50%	12.39%	5.31%	7.96%	3.54%	22.12%	18.58%	0.00%	0.00%

Our SIMD Profile by Domain

SIMD Domain Deciles		Kilmarnock Academy	East Ayrshire (Sector)
INCOME	Min	1	1
	Mean	5	5
	Mode	3	1
	Max	10	10
EMPLOYMENT	Min	1	1
	Mean	5	5
	Mode	2	2
	Max	10	10
HEALTH	Min	1	1
	Mean	4	5
	Mode	1	1
	Max	10	10
EDUCATION	Min	1	1
	Mean	4	4
	Mode	1	3
	Max	10	10
ACCESS	Min	1	1
	Mean	3	4
	Mode	3	3
	Max	9	10
CRIME	Min	1	1
	Mean	5	6
	Mode	2	2
	Max	10	10
HOUSING	Min	1	1
	Mean	6	6
	Mode	3	4
	Max	10	10

Note:

Mean – the average SIMD decile of all pupil postcodes. This value can be skewed due to low or high outlier values.

Mode – the most common SIMD decile of all pupil postcodes. This value can be considered more representational of the school profile.

INCOME

Percentage of people who are income deprived and receive certain benefits or tax credits

HEALTH

Comparative Illness Factor: standardised ratio

Hospital stays related to alcohol misuse: standardised ratio

Hospital stays related to drug misuse: standardised ratio

Standardised mortality ratio

Emergency stays in hospital: standardised ratio

Proportion of population being prescribed drugs for anxiety, depression or psychosis

Proportion of live singleton births of low birth weight

ACCESS

Average drive time to a petrol station, a GP surgery, a post office, a primary school, a secondary school, a retail centre

Public transport travel time to a GP surgery, a post office, a retail centre

EMPLOYMENT

Percentage of working age people who are employment deprived and receive certain benefits

EDUCATION

School pupil attendance

Attainment of school leavers

Working age people with no qualifications: standardised ratio

Proportion of people aged 16-19 not in full-time education, employment or training

Proportion of 17-21 year olds entering into full time higher education

CRIME

Recorded crimes of violence, sexual offences, domestic housebreaking, vandalism, drugs offences, and common assault per 10,000 people

HOUSING

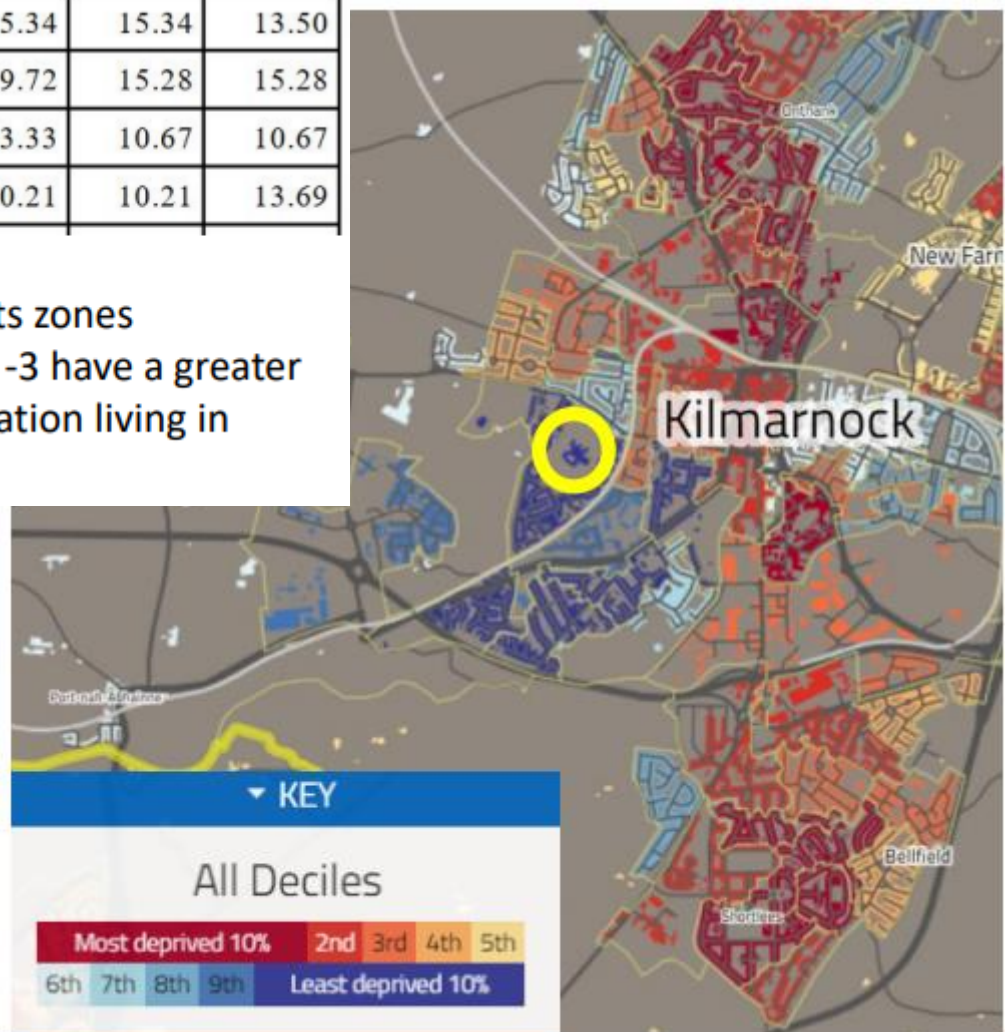
Percentage of people living in households that are overcrowded

Percentage of people living in households with no central heating

Our Curriculum – Our Community

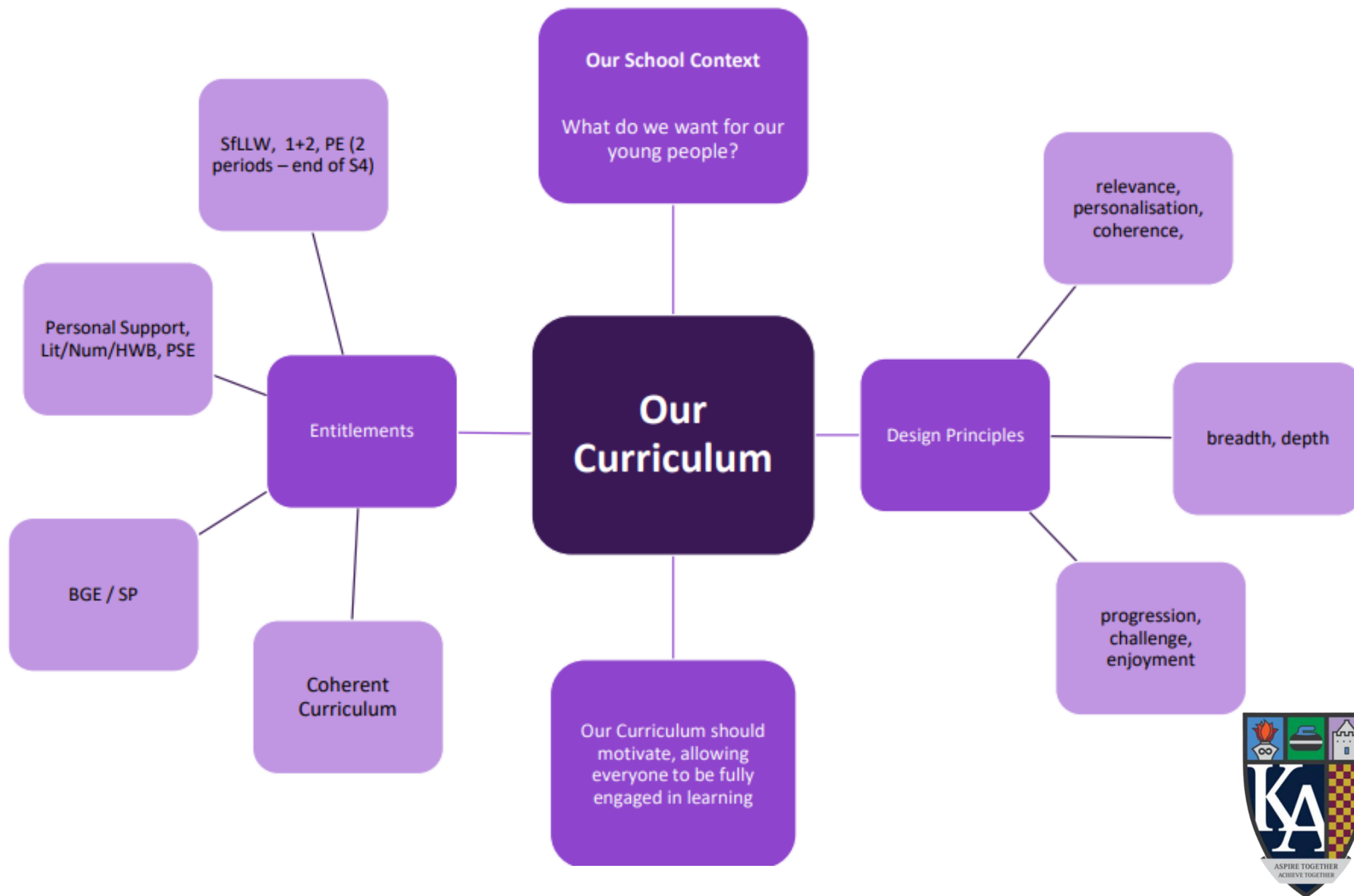
Council	d1 %	d2 %	d3 %
Glasgow City	29.89	14.48	11.13
West Dunbartonshire	17.36	22.31	14.88
Inverclyde	31.58	13.16	7.89
North Ayrshire	17.20	22.58	11.29
Dundee City	22.87	15.43	11.17
North Lanarkshire	13.20	21.48	14.32
East Ayrshire	15.34	15.34	13.50
Clackmannanshire	9.72	15.28	15.28
Renfrewshire	13.33	10.67	10.67
South Lanarkshire	10.21	10.21	13.69

Councils with more of its zones distributed into ranks 1 -3 have a greater percentage of its population living in deprived areas.



More local information around our community learning, housing, health, leisure, shopping, food and drink, economy, transport and the school's catchment can be found in 'Our School in Context 2025'.

Our Curriculum – Our Model



Summative recognition event to Celebrate Success in June
 Redcoin whole school rewards system based on our values
 Achievement tracking.
 Outside school achievement recognition and community informing approach via socials.
 Strong and supportive Extra Curricular offer incl. a Freshers' Fayre
 Achievement courses permeate the pathways offer



A clear and co-agreed Vision & set of living Values
 A Right's Respecting Gold Accredited (twice) school.
 Keeping the Promise Award
 A Fair Trade school
 Recognised for Relational Practice (WTAC partner School)
 Digital Wellbeing recognition
 LGBT Silver Charter
 STEM Nation Award 2023
 Eco and Clean Green Gold Awards



KILMARNOCK ACADEMY



DYW Opportunities which promote Life, Learning and work skills development.
 Mock Interview Programme
 S6 Leadership Day
 Pupil Leadership Conference
 STEM Week
 Pathway inputs in S1 progressing to work based pathways
 Outdoor learning both embedded in the curriculum and bespoke stage opportunities.



S1-S6 Curricular Progression
 S1-3 BGE Experience based on 7 design principles
 Senior Phase Pathways aligned to the needs of learners
 SCQF Gold Awarded school
 Strong partnerships embedded in the curriculum enhancing relevance
 Cognisance taken of the LMI and AGD opportunities
 Strong curricular tracking, progression and support.

Our Pathways

Kilmarnock Academy Prospectus

2025

Aspire Together
Achieve Together

Overview

Our prospectus is used along with our 'Pathways forms' to help young people make decisions about what subjects they will study throughout their time at Kilmarnock Academy.

The Prospectus gives information about every subject which is offered, including the stage they can be studied, the level they can be studied at and the entry requirements for each subject and level. They are supported to make decision about the subjects they will study at different points in their school journey.

Young people will make choices about the subjects they will study in S2 and S3. This is called the Broad General Education (BGE). There is a controlled choice at this stage as they must still study a wide range of subjects across the full breadth of curricular areas. These curricular areas and subjects are offered at the full range of levels but mainly at Curriculum for Excellence (CfE) Levels 2, 3 or 4.

In S4 young people will study subjects which will lead to National Qualifications and other awards detailed in the booklet. These qualifications will be at SCQF Level 3 (including National 3), Level 4 (including National 4) and Level 5 (including National 5).

During S5 and S6 subjects will also lead to National Qualifications. These qualifications will be at SCQF Level 5 (including National 5), Level 6 (including Higher) and Level 7 (including Advanced Higher) with the latter being mainly available in S6. In S6 there is generally more flexibility to pick up several subjects not previously studied, subject to meeting the entry requirements.

Kilmarnock Academy is proud to be an SCQF Gold Ambassador School. This means that we offer a wide range of subjects at different levels to meet the needs of all learners. We also work with partners such as Ayrshire College, local businesses, EAC, other schools and the Open university to enhance the provision we can offer young people. The QR Codes below for more information on:

The SCQF Framework



Provides more detail on
qualifications levels

Ayrshire College



Provides more detail on
school/ college courses

**YASS (Young Applicants in
Schools Scheme)**



Provides more detail on
YASS courses

The Broad General Education (S1-3)

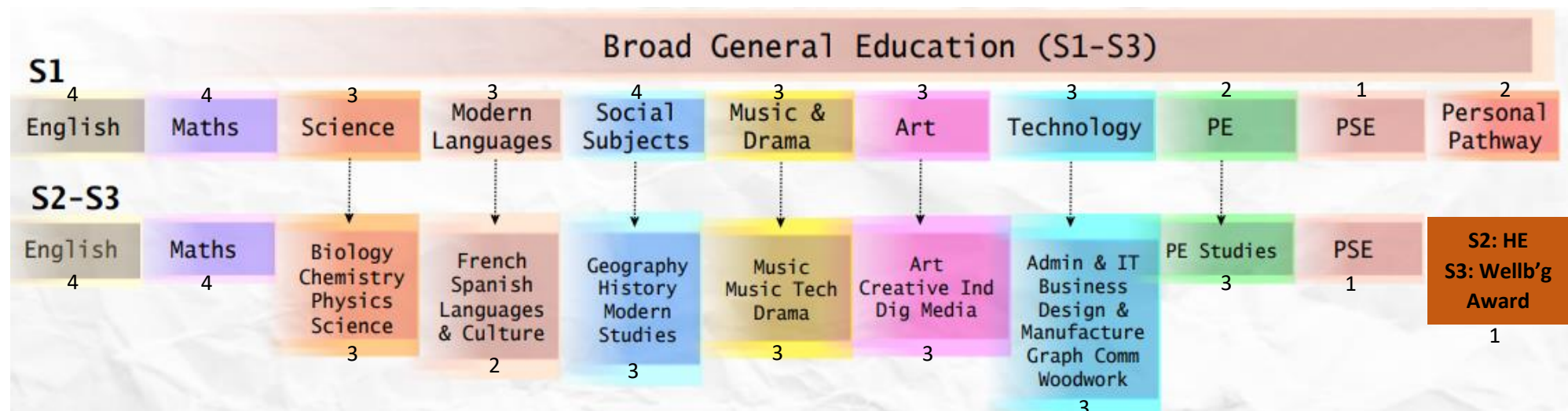
We currently operate a 33-period week whereby we have 32 period each 50 minutes long and a wellbeing slot which is 10 minutes each day making up the 33rd period.

The BGE Curriculum is aligned to be spread across the 32 periods as detailed in the graphic.

The Wellbeing period/ slot is for all young people from S1-6 and takes place from 8.40 – 8.50am each day. This is a key part of the day whereby staff ensure all pupils are 'ready to learn' each day and have all the resources they require. In addition, there is a wellbeing curriculum delivered in small parts each day. This is an essential wellbeing session and check in where key support information is also delivered.

At the end of S1, pupils are able to personalise their pathway a little by having a degree of choice. This allows for increased depth of study whilst still ensuring breadth of learning. Pupils will follow these courses throughout S2 and S3.

The Curricular Area of RME is subsumed into the Social Subjects Curriculum.



BGE Pathway Planning



S2 CURRICULUM PATHWAY FORM

NAME		WELLBEING CLASS	
------	--	-----------------	--

What Career are you thinking of?					
What is your intended school leaving date?	End of S4		End of S5		End of S6

You must choose English and Maths and one subject from each curricular area as well as two other free choice subjects

Before you make your choices read the Kilnarnock Academy Prospectus (scan the QR Code below) which gives information about all the subjects, including what level they are offered in S2 and S3 (BGE) and what they progress into in S4 and S5/ S6 (senior phase). This form should be completed after you have had your individual meeting with your Pupil Support Teacher then taken home and signed.

Social Subjects	Modern Languages	Science	Expressive Arts	Technologies
Geography	French	Biology	Art & Design	Admin & IT
History	Spanish	Chemistry	Creative Industries (Art)	Business Management
Modern Studies	Gaelic	Physics	Music	Graph Com
	Gaidhlig (fluent)	Environmental Science	Drama	Music Technology
	Languages & Culture	Science	Physical Education	Digital Media
			Creative Thinking Skills (Technology)	Design & Manufacture
				Woodwork

My Choices:

Social Subject	
Modern Language	
Science	
Expressive Art	
Technology	
Additional Subject 1	
Additional Subject 2	
Reserve Subject	



Scan the QR Code to access the Kilnarnock Academy Prospectus

Note: To ensure we meet the needs of every learner each column will have accessible courses that your Pupil Support Teacher will discuss during your options interview. These will be identified in the 'My choices' table.

Instructions – Please read carefully before completing this form:

1. You must select 7 subjects.
2. You should select one subject from each of the columns and write these in the 'My Choices' table.
3. You should select 2 additional subjects, these can be from any column. You should write these in the Additional Subject in the 'My Choices' table. You should write your 1st choice as subject 1 and your 2nd choice as subject 2.
4. You should select a reserve subject. Write this in the Reserve Subject in the 'My Choices' table

The Senior Phase (S1-6)

- Pupils and Parents/Carers are given advice and input from school staff, Skills Development Scotland, Further and Higher Education colleagues amongst others as to the appropriate choices they need to make to ensure the correct pathway is open to them and leads towards their chosen goal. This support is offered at each transition point.
- The curriculum has attainment and achievement at its heart. Learners are encouraged to engage in a curriculum that will deliver opportunities to be successful in attainment as well as wider achievement.
- Personalisation and Choice works on the basis of 'free choice' without the restriction of a columnized menu and is based on a young person's current curriculum, strengths, aspirations alongside progression data/ information provided by key staff such as the young person's Pupil Support Teacher.
- Young people pick their best/ preferred 5 subjects, each studied for 6 50-minute periods. In addition, In S4 they take 1 period of PSE and 2 periods of Physical Education. In S5/6 Pupils have a period of PSE and a chosen elective. Learning can take place in a variety of ways as follows:

Senior Phase (S4-S6)

S4

Learning in School
Learning at Ayrshire College
Learning with Partners

S5

Learning in School
Learning at Ayrshire College
Learning through Foundation Apprenticeships
Learning with Partners

S6

Learning in School
Learning at Ayrshire College
Learning through Foundation Apprenticeships
Learning with Partners

Learning in School
English
Maths, Applications Of Maths
Geography, History, Modern Studies, Scottish Studies, Travel & Tourism, Politics, Legal Studies
Biology, Human Biology, Chemistry, Physics, Health Sector
PE, Sports Development
French, Spanish, Gaelic, Gaidhlig
Art & Design, Creative Industries, Digital Media
Photography
Administration & IT, Business Management, Design & Manufacture, Graphic Communication, Woodwork
Leadership, Personal Development, Barista & Milk Bar

Learning at Ayrshire College
Software Development
Introduction to Construction
Early Education & Childcare
Performing Engineering Operations
Hair & Beauty
Mental Health & Wellbeing
Professional Cookery, Hospitality
Automotive Skills
Psychology
Uniformed Services, Sport & Fitness (Football), Sports Coaching & Development

Learning through Foundation Apprenticeships
Engineering
Social Services Children & Young People
Scientific Technologies (Laboratory Skills)
Civil Engineering
Social Services & Health Care
Food & Drink Technologies

Learning with Partners
SL33, Centre Stage, Take a Bow
East Ayrshire Schools Consortia
SWEIC
Advanced Higher: Maths, English, History (USA or Germany), Modern Studies, Physics Graphic Communication
Higher: Politics
YASS
Law making in Scotland, Contemporary topics in science

S4 Personalisation & Choice



S4 CURRICULUM PATHWAY FORM

NAME		WELLBEING CLASS	
------	--	-----------------	--

What Career are you thinking of?					
What is your intended school leaving date?	<table> <tr> <td>June 2026 (end of S4)</td><td>December 2026 (S5)</td></tr> <tr> <td>June 2027 (end of S5)</td><td>June 2028 (end of S6)</td></tr> </table>	June 2026 (end of S4)	December 2026 (S5)	June 2027 (end of S5)	June 2028 (end of S6)
June 2026 (end of S4)	December 2026 (S5)				
June 2027 (end of S5)	June 2028 (end of S6)				

Pick any 5 subjects from the list below. You must also study English and Maths or Applications of Maths. These five subjects must be from the subjects you are currently studying in S3. You cannot pick any new subjects except those from the Other Courses section

Before you make your choices read the Kilmarin Academy Prospectus (scan the QR Code below) which gives information about all the subjects, including what level they are offered at and the entry requirements for each level. This form should be completed after you have had your individual meeting with your Pupil Support Teacher then taken home and signed.

The subjects available are detailed below

	Subjects	Choices (1-5 + R)
Social Subjects	Geography	
	History	
	Modern Studies	
Science	Biology	
	Chemistry	
	Physics	
	Environmental Science	
	Health Sector	
	Science	
	PE	
Modern Languages	French	
	Spanish	
	Gaelic	
	Gaedhlig	
Performing Arts	Music	
	Music Technology	
	Drama	
Expressive Arts	Art & Design	
	Creative Industries	
	Digital Media	
Technologies	Administration & IT	
	Business Management	
	Design & Manufacture	
	Graphic Communication	
	Practical Woodwork	
Other Courses	Personal Development	
	Barista	
	Early Education & Child Care	
	College Course (see note 1 below)	

Instructions – Please read carefully before completing this form:

1. You must select 5 subjects.
2. Select your 5 subjects by completing the choices' column in the table opposite. **These should be numbered 1 – 5 (1 being your 1st choice, 2 your 2nd etc)**
3. Select a reserve subject. Mark this with an 'R'

Scan the QR Code to access the Kilmarin Academy Prospectus



Notes:

1. If you select College Course you will miss core PE and PSE. You must complete a College Application and be accepted on a College Course

S5 Personalisation & Choice



S5 CURRICULUM PATHWAY FORM

NAME		WELLBEING CLASS	
------	--	-----------------	--

What Career are you thinking of?			
What is your intended school leaving date?	December 2025	June 2026 (end of S5)	June 2027 (end of S6)

Pick any 5 subjects from the list below. This must be from the subjects you are currently studying in S4. You cannot pick any new subjects except those from the Other Courses section

Before you make your choices read the Kilnarnock Academy Prospectus (scan the QR Code below) which gives information about all the subjects, including what level they are offered at and the entry requirements for each level. This form should be completed after you have had your individual meeting with your Pupil Support Teacher then taken home and signed.

The subjects available are detailed below with the level (L5 = SCQF Level 5 or National 5; L6 = SCQF Level 6 or Higher)

	Subjects (and level offered)	L5	L6	Choices (1-5 + R)	L5	L6
English	English	✓	✓			
Maths	Maths	✓	✓			
	Application of Maths	✓	✓			
Social Subjects	Geography		✓			
	History		✓			
	Modern Studies		✓			
	Scottish Studies		✓			
	Travel & Tourism	✓				
	Politics		✓			
	Legal Studies (with criminology)		✓			
Science	Biology		✓			
	Human Biology		✓			
	Chemistry		✓			
	Physics		✓			
	Health Sector	✓				
PE	PE	✓	✓			
Modern Languages	French	✓	✓			
	Spanish	✓	✓			
	Gaelic	✓	✓			
	Gaidhlig	✓	✓			
Perform Arts	Music	✓	✓			
	Music Technology	✓	✓			
	Drama	✓	✓			
Expressive Arts	Art & Design	✓	✓			
	Creative Industries		✓			
	Digital Media	✓	✓			
	Photography		✓			
	Administration & IT		✓			
Technology	Business Management		✓			
	Design & Manufacture		✓			
	Graphic Communication		✓			
	Performing Engineering Operations	✓				
	Personal Development		✓			
Other Courses	Milk Bar	✓				
	College Course	✓	✓			

Instructions – Please read carefully before completing this form:

1. You must select 5 subjects.
2. Select your 5 subjects by completing the choices' column in the table opposite. **These should be numbered 1 – 5 (1 being your 1st choice, 2 your 2nd etc)**
3. Select a reserve subject. Mark this with an 'R'
4. Tick (✓) the level (L5 or L6) which you plan to study the subject at in S5
5. Select one Short Course from the table below. Please tick (✓) your selection.

Select one short course (✓)

Short Course	✓
Photography	
Citizenship	
Music for Wellbeing	
Basketball (Participating, Officiating and Organising)	
Football (Participating, Officiating and Organising)	
Netball (Participating, Officiating and Organising)	
German	
Mental Health Award	
Enterprise & Employability	
Numeracy (Level 6)	

Scan the QR Code to access the Kilnarnock Academy Prospectus



Please turn over for important information and to sign this form

S6 Personalisation & Choice



S6 CURRICULUM PATHWAY FORM

NAME		WELLBEING CLASS	
------	--	-----------------	--

What Career are you thinking of?			
What is your intended school leaving date?	December 2025	June 2026 (end of S6)	

Before you make your choices read the Kilnarnock Academy Prospectus (scan the QR Code below) which gives information about all the subjects, including what level they are offered at and the entry requirements for each level. This form should be completed after you have had your individual meeting with your Pupil Support Teacher then taken home and signed.

The subjects available are detailed below with the level (L5 = SCQF Level 5 or National 5; L6 = SCQF Level 6 or Higher; L7 = SCQF Level 7 or Advanced Higher). Advanced Highers will be offered on a consortia arrangement with other East Ayrshire Schools or online through SWEIC.

	Subjects (and level offered)	L5	L6	L7	Choices (1-5 + R)	L5	L6	L7
English	English		✓	✓				
Maths	Maths		✓	✓				
	Application of Maths	✓	✓					
Social Subjects	Geography		✓					
	History		✓	✓				
	Modern Studies		✓	✓				
	Scottish Studies		✓					
	Travel & Tourism	✓						
	Politics		✓					
	Legal Studies (with criminology)		✓					
Science	Biology		✓	✓				
	Human Biology		✓					
	Chemistry		✓	✓				
	Physics		✓	✓				
	Health Sector	✓						
PE	PE	✓	✓					
	Sports Development		✓					
Modern Languages	French	✓	✓					
	Spanish	✓	✓					
	Gaelic	✓	✓					
	Gaidhlig	✓	✓					
Perform Arts	Music	✓	✓	✓				
	Music Technology	✓	✓					
	Drama	✓	✓					
Expressive Arts	Art & Design	✓	✓	✓				
	Creative Industries		✓					
	Digital Media	✓	✓					
	Photography		✓					
Technologies	Administration & IT		✓					
	Business Management		✓					
	Design & Manufacture		✓					
	Graphic Communication		✓	✓				
	Performing Engineering Operations	✓						
Other Courses	Leadership		✓					
	Milk Bar	✓						
	College Course	✓	✓					
	YASS			✓				

Instructions – Please read carefully before completing this form:

1. You must select 5 subjects.
2. Select your 5 subjects by completing the choices' column in the table opposite. These should be numbered 1 – 5 (1 being your 1st choice, 2 your 2nd etc)
3. Select a reserve subject. Mark this with an 'R'
4. Tick (✓) the level (L5, L6 or L7) which you plan to study the subject at in S6
5. Select one Short Course from the table below. Please tick (✓) your selection.

Select one short course (✓)

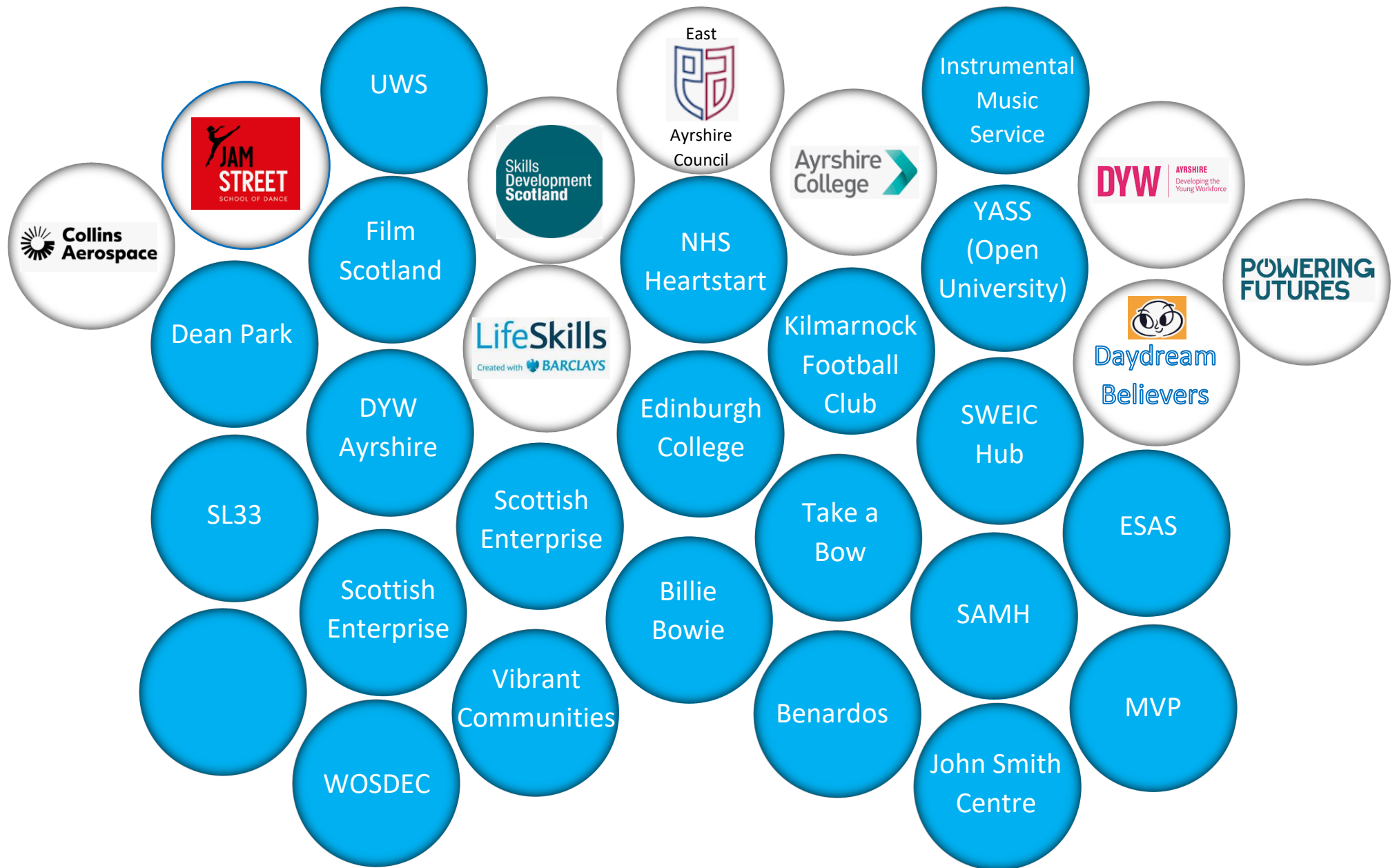
Short Course	✓
Photography	
Citizenship	
Music for Wellbeing	
Basketball (Participating, Officiating and Organising)	
Football (Participating, Officiating and Organising)	
Netball (Participating, Officiating and Organising)	
Cooking for University	
Numeracy (Level 6)	
German	
Volunteering	
Mental Health Award	
Young Enterprise	

Scan the QR Code to access the Kilnarnock Academy Prospectus



Please turn over for important information and to sign this form

Our Curriculum – Our Partners (sample)





School College Partnership Courses

Campus	Course Name	Delivery Location	SCQF Level	Delivery Days	Delivery Times
BUSINESS AND COMPUTING					
Kilmarnock	NPA Software Development Level 4	Kilmarnock Campus	4	Tues/Thurs	2:00 - 4:00
Kilmarnock	NPA Software Development Level 6	Kilmarnock Campus	6	Tues/Thurs	2:00 - 4:00
Kilwinning	HNC Cyber Security (infill)	Kilwinning Campus	7	Tues/Thurs	9:00 - 4:00
CONSTRUCTION					
Kilmarnock	Introduction to the Construction Industry	Kilmarnock Campus	4	Tues/Thurs	2:00 - 4:00
Kilwinning	SFW Renewable Energy	Kilwinning Campus	5	Tues/Thurs	2:00 - 4:00
Ayr	SFW Renewable Energy	Ayr Campus	5	Tues/Thurs	2:00 - 4:00
Ayr	HNC Architectural Technology and Sustainability (Infill)	Ayr Campus	7	Mon/Wed	9:00 - 4:00
CREATIVE					
Ayr	NPA Digital Media with Film Making	Ayr Campus	5	Tues/Thurs	2:00 - 4:00
Ayr	NPA Acting & Performance	Ayr Campus	6	Tues/Thurs	2:00 - 4:00
Ayr	NPA Sound Production	Ayr Campus	6	Tues/Thurs	2:00 - 4:00
Ayr	Portfolio Work (Life Drawing & Printmaking)	Ayr Campus	6	Tues/Thurs	2:00 - 4:00
Ayr	Production Arts (Including Technical Theatre) (Level 6)	Ayr Campus	6	Tues/Thurs	2:00 - 4:00
EARLY YEARS					
Kilmarnock	Skills for Work Early Education & Childcare Level 4	Kilmarnock Campus	4	Tues/Thurs	2:00 - 4:00
Kilmarnock	Skills for Work Early Education & Childcare Level 5	Kilmarnock Campus	5	Tues/Thurs	2:00 - 4:00
Ayr	NPA Children & Young People	Ayr Campus	6	Tues/Thurs	2:00 - 4:00
Kilwinning	NPA Children & Young People	Kilwinning Campus	6	Tues/Thurs	2:00 - 4:00

ENGINEERING AND SCIENCE					
Kilmarnock	SVQ 1 Performing Engineering Operations	Kilmarnock Campus	4	Tues/Thurs	2:00 - 4:00
Kilmarnock	SVQ 2 Performing Engineering Operations (Kilmarnock and Grange Academy)	Kilmarnock Campus	5	Tues/Thurs	2:00 - 5:00
Kilmarnock	SVQ 2 Performing Engineering Operations (Robert Burns Academy)	Kilmarnock Campus	5	Tues/Thurs	2:00 - 5:00
Kilmarnock	SVQ 2 Performing Engineering Operations (infill)	Kilmarnock Campus	5	Thur/Fri	9:00 - 4:00
Ayr	Foundation Apprenticeship Engineering Y1 (Aeronautical)	Ayr Campus	6	Tues/Thurs	2:00 - 5:00
Kilwinning	Foundation Apprenticeship Engineering Y1 (Electrical)	Kilwinning Campus	6	Tues/Thurs	2:00 - 5:00
Kilmarnock	HNC Applied Sciences (infill)	Kilmarnock Campus	7	Tues/Thurs	9:00 - 4:00
Kilwinning	HNC Electrical (Infill)	Kilwinning Campus	7	Wed/Thurs	9:00 - 4:00
Kilwinning	HNC Mechatronics (Infill)	Kilwinning Campus	7	Wed/Thurs	9:00 - 4:00

HAIR AND BEAUTY					
Kilmarnock	Steps to Work Hair & Beauty	Kilmarnock Campus	4	Tues /Thurs	2:00 - 4:00
HEALTH AND SOCIAL CARE					
Kilmarnock	Mental Health & Well Being Award	Kilmarnock Campus	5	Tues/Thurs	2:00 - 4:00
Kilwinning	NC in Oral Healthcare (Schools in-fill)	Kilwinning Campus	6	Mon/Wed	9:00 - 4:00
HOSPITALITY					
Kilmarnock	NPA Professional Cookery	Kilmarnock Campus	4	Tues/Thurs	2:00-5:00 Tues plus one hour remote on a Thursday
Kilmarnock	NPA Hospitality	Kilmarnock Campus	5	Tues/Thurs	2:00 - 4:00
Ayr	HNC Hospitality and Operations (infill)	Ayr Campus	7	Mon/Wed	9:00 - 4:00
MOTOR VEHICLE					
Kilmarnock	Skills for Work: Automotive Skills National 4	Kilmarnock Campus	4	Tues/Thurs	2:00 - 4:00

SOCIAL SCIENCE					
Ayr	NPA Criminology	Ayr Campus	6	Tues / Thurs	2:00 - 4:00
Kilwinning	NPA Criminology	Kilwinning Campus	6	Tues / Thurs	2:00 - 4:00
Kilmarnock	NPA Psychology	Kilmarnock Campus	6	Tues / Thurs	2:00 - 4:00
SPORT					
Kilwinning	Skills for Work: Uniformed Services	Kilmarnock Campus	4	Tue / Thu	2:00 - 4:00
Kilmarnock	NPA Sport & Fitness (Football)	Kilmarnock Campus	5	Tues / Thurs	2:00 - 4:00
Kilmarnock	HNC Sports Coaching and Development (Infill)	Kilmarnock Campus	7	Tues / Thurs	9:00 - 4:00
Kilwinning	HND Year 1 Applied Sport Science (incorporating HNC Fitness)	Kilwinning Campus	7	Tues / Thurs	9:00 - 4:00
ESOL					
Kilmarnock	Esol	Kilmarnock Campus	TBC		

SWEIC Partnership Courses

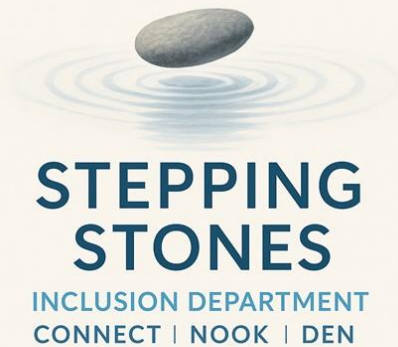
Session 2025-26 Subjects and Times			
Time Slot 1		Time Slot 2	
Tues 9am-10.30 Thurs 9am-10.30 + 1 x 45min session TBC		Tues 1.45-3.15pm Thurs 1.30-3.00pm + 1 x 45min session TBC	
Subject/Level	Teacher	Subject/Level	Teacher
Chemistry Adv Higher (Blended)	Mrs Leanne Smith (EAC)	Application of Maths Higher	TBC
History Adv Higher (Germany)	Mr George Surgenor (SAC)	Business Management Adv Higher	Mrs Caitlin MacLean (NAC)
Modern Studies Adv Higher	Mrs Lynsey Pollock (SAC)	English Adv Higher Section 1	Mr Scott Powell (D&G)
		Graphic Communication Adv Higher	Mr Sam Grier (NAC)
		History Adv Higher (USA)	Mr William McGair (D&G)
		Maths Adv Higher Section 1	Mrs Jenna Drife (D&G)
		Maths Adv Higher Section 2	Mrs Julia Fulton (D&G)
		Physics Adv Higher (Blended)	Mrs Christine Sneddon (EAC)
		Politics Higher	Mr Barry Kerr (SAC)
		Range of Modern Languages (French/German/Italian/Spanish)(N5 to Adv H) *Times may vary	Edinburgh College

Enhanced Opportunities

For those that find it a challenge to attend Kilmarnock Academy, for example due to health reasons, extreme anxiety etc, we can support their curriculum with two forms of enhanced opportunities.

1. East Ayrshire Council's Enhanced opportunities programme to support Literacy. This involves a referral to the service and then provides the opportunity for Literacy Education to be provided remotely. The focus for this is predominately for S3 and S4 to improve outcomes for learners.
2. Kilmarnock Academies Internal provision. The school currently offers English and Maths remote learning opportunities each week. Young people requiring this support would be identified and supported by our Principal teacher of Equity. Where there is engagement and a need the school has offered a wider range of opportunities in subjects such as Social Subjects, Science and others.

Our Curriculum - Our Inclusion



Everyone belongs here. We are kind, respectful and listen to each other. We understand that everyone is different, and that's what makes our team special. At our inclusion rooms, we work together to help you feel safe, calm and ready to learn. No matter what, we're here to support you, celebrate who you are, and help you keep going—even when things feel tough.

- Article 28 – Every child has the right to an education.
- Article 29 – Education must develop every child's personality, talents and abilities to the full.
- Article 2 – All children have rights, no matter who they are.
- Article 12 – Every child has the right to have a say in all matters affecting them.

For those who are identified through assessment as requiring targeted support beyond the universal provision we offer two curricular supports as well as the traditional Support for Learning resource.

Our Inclusion support has been branded 'Stepping Stones' which is an amalgamation of our former Hub and Connect provisions.

Stepping Stones is the rebrand of Inclusive supports within the school after a collaborative redesign process undertaken by staff and young people. This accounts for targeted and bespoke educational plans for young people with significant barriers preventing them accessing a full mainstream timetable.

The team support young people with a range of Additional Support Needs inclusive of developmental trauma, Autistic Spectrum Disorder, significant poor attendance and poor mental wellbeing.

The Inclusive curriculum focuses on Health and Wellbeing whilst remaining underpinned by Literacy and Numeracy to foster a collaborative relationship with the whole school priorities and mainstream curricula. The curriculum is designed with clear pedagogy roots in Neurosequential Model for Education, Trauma Informed Practice and Play Based Experiential Learning.

Young people accessing this support are referred based upon ongoing assessment which has been agreed and streamlined through clear assessment frameworks. Child's Plans are then agreed with appropriate adaptations focusing on a pupil centred and strengths-based approach with the core aim of building capacity to access as much mainstream as appropriate per individual circumstance. Partnership working is a core value within the team and continual contextual assessment is used to ensure best outcomes for learners.

Working in partnership with external agencies, the department aims to promote community engagement as well as increase regulation experiences and exploration of real-world opportunities. Our Inclusion Partners are detailed below.

Our Inclusion Partners



Our Curriculum - Our Future

LABOUR MARKET INTELLIGENCE

Job Openings in the Long-Term (2025-2032)

The forecasts for the long-term (2025-2032) highlight that jobs growth is forecast in Ayrshire. In addition to expansion demand (the creation of new jobs), it is expected that there could be an ongoing requirement for skilled people to fill opportunities created by people leaving the labour market. This feature of the labour market, known as the replacement requirement, is a symptom of the demographic change strategic driver.

In Ayrshire, 38,800 job openings are forecast from 2025 to 2032. In the region, and as shown in the previous chapter, the number of people required is forecast to increase by 2,700 from 2025 to 2032 due to expansion in the labour market. The replacement requirement of 36,100 people will also create a need for labour.

In Scotland, 737,600 job openings are forecast from 2025 to 2032. The number of people required is forecast to increase by 40,700 from 2025 to 2032 due to expansion in the labour market. The replacement requirement of 696,900 people will also create a need for labour.

The long-term forecast is changeable and could be influenced by a range of factors. National and local policy, investment and initiatives for example could all influence the long-term outlook presented.



The total requirement by qualification level for **Ayrshire**:

SCQF 11-12	SCQF 7-10	SCQF 6	SCQF 5	SCQF 1-4	No quals.
2,300 (6%)	17,700 (46%)	5,900 (15%)	9,300 (24%)	1,000 (2%)	2,500 (7%)

The total requirement by qualification level for **Scotland**:

SCQF 11-12	SCQF 7-10	SCQF 6	SCQF 5	SCQF 1-4	No quals.
54,000 (7%)	368,000 (50%)	94,300 (13%)	156,900 (21%)	16,200 (2%)	48,200 (7%)

LABOUR MARKET INTELLIGENCE

Job openings are expected to be concentrated in a small number of industries, with four industries in Ayrshire forecast to account for 22,500 (58.1 per cent) of the requirement. These are (see Figure 12):



Wholesale and Retail Trade:
7,600 people



Human Health and Social Work:
6,800 people



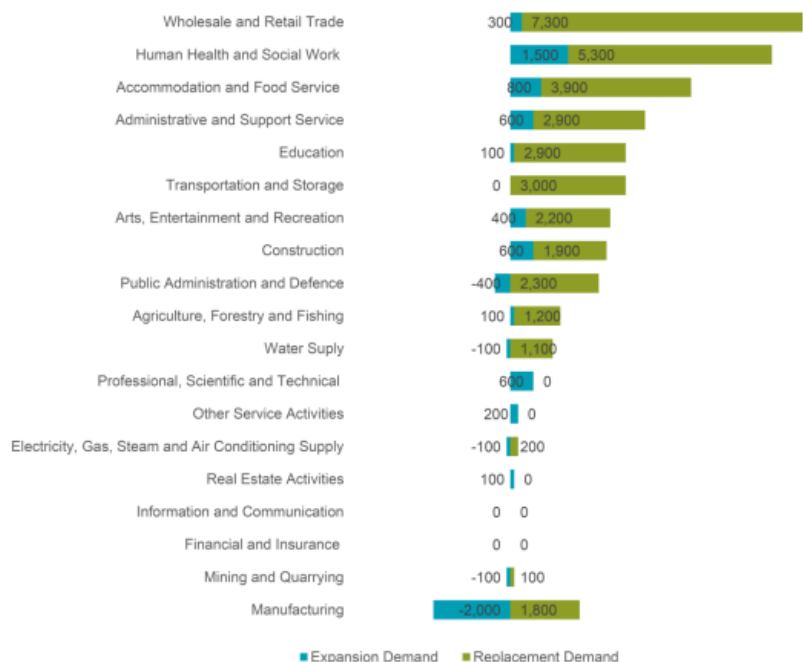
Accommodation and Food Service:
4,700 people



Administrative and Support Service:
3,500 people

As we highlighted in our analysis of the mid-term, the operating practices of some industries are changing and evolving and will continue to do so over the longer term too. Automation has accelerated as a result of the pandemic and Industry 4.0 is set to have an even greater impact on the operating practices of industries such as Wholesale and Retail.

Figure 12: Forecast total requirement by industry (2025-2032), Ayrshire



LABOUR MARKET INTELLIGENCE

Similar to mid-term projections, employment growth by sector will be spread across a range of occupations in Ayrshire. Between 2025-2032, growth is expected to be greatest in Caring Personal Service Occupations, with 900 more people needed to work in this occupation.

Occupations that are growing indicate how the labour market will develop in the future in terms of the type of jobs created and skills that may be required. However, the replacement requirement of people in the region will create a strong demand for labour.

By occupation, the greatest number of people are forecast to be required in (see Figure 13):



Elementary Occupations: Clerical and Services related:
4,700 people



Sales Occupations:
4,600 people



Caring Personal Service Occupations:
3,700 people

Figure 13: Forecast total requirement by occupation (2025-2032), Ayrshire



SDS REGIONAL
SKILLS ASSESSMENT
AYRSHIRE
(NOV 2022)



AYRSHIRE GROWTH DEAL (AGD)

The Ayrshire Growth Deal – Scotland's first non-city deal – was signed in November 2020 and will bring a public sector investment of **£251.5 million** into the region.

The scale of this deal will galvanise efforts to develop key strategic sites and key sectors in Ayrshire and aims to facilitate private sector investment of more than £300m into the region and to support up to 7,000 new jobs.

The vision for the Ayrshire Growth Deal is for Ayrshire to be a vibrant, outward looking, confident region, attractive to investors and visitors, making a major contribution to Scotland's growth and local wellbeing and leading the implementation of digital technologies and the next generation of manufacturing.

Skills are a cross-cutting priority for the region, with a sectoral focus upon:

- Aerospace/space sector;
- Clean growth;
- Food and drink;
- Visitor economy; and
- Digital.

Ayrshire Growth Deal
Annual Report
2021/22



AYRSHIRE
GROWTH DEAL

Space and
Aerospace



Economic
Infrastructure



Energy, Circular
Economy &
Environment



Communities



Tourism



Our Curriculum - Developments

At Kilmarnock Academy, we continue to look to our Labour Market Intelligence and local opportunities related to the Ayrshire Growth Deal and ensure pathways are relevant to our young people and can lead to positive post school destinations. To this end we dynamically adapt our curriculum annually to align to qualifications and course the young people need for their future pathways locally.

The following courses are being planned for session 2026/ 27 and beyond.

BGE

S1 Personal pathway to capture interest areas from Primary through project based learning and embedded meta skills for all learners.

S2 A new skills based course for all learners possibly adopted by the Technologies Faculty.

S3 The Wellbeing Award run by Social Subjects will incorporate Meta skills for all learners.

Senior Phase

Level 4

Practical Cookery (S4)

Level 5

Hospitality Foundation Apprenticeship

Performing Engineering operations (PEO)

Level 6

Applied Design & Construction Skills course [this will replace the now dated Design & Manufacture higher].

Business Skills Foundation Apprenticeship

Social Services (Child Care) Foundation Apprenticeship

New leadership Pathways:

Energy & Environment (Leadership Award, Powering Futures & Climate Change Award)

Business Economy (Leadership & Young Enterprise)

Tourism & Hospitality (Leadership, Barista & Practical Cookery)

Aerospace (leadership & Science)

Level 7

Consider partner such as SWEIC, Local schools, Edinburgh University, Open University and UWS Foundation Academy working to widen our offer.