

**Tuesday 11<sup>th</sup> March 2025**

**P7 Information Evening  
Welcome to Kilmarnock Academy**



# Differences

- 6 or 7 periods in a day – different subjects and different teachers.
- Subject specialists.
- New subjects – Drama, Science and Technical.
- New opportunities – extra-curricular activities, trips.
- Wellbeing class each morning



# P7 Transition Plan 2024/25

Date	Event
Beginning 30 <sup>th</sup> September 2024	CW and DR visit to all P7s
WB 4 <sup>th</sup> November 2024	Subject department visit 1 – Science
WB 25 <sup>th</sup> November 2024	Subject department visit 2 – Social Subjects Sustainability Project
WB 6 <sup>th</sup> January 2025	Subject department visit 3 – Technologies

# Kilmarnock Academy – P7 Transition Plan 2024/25

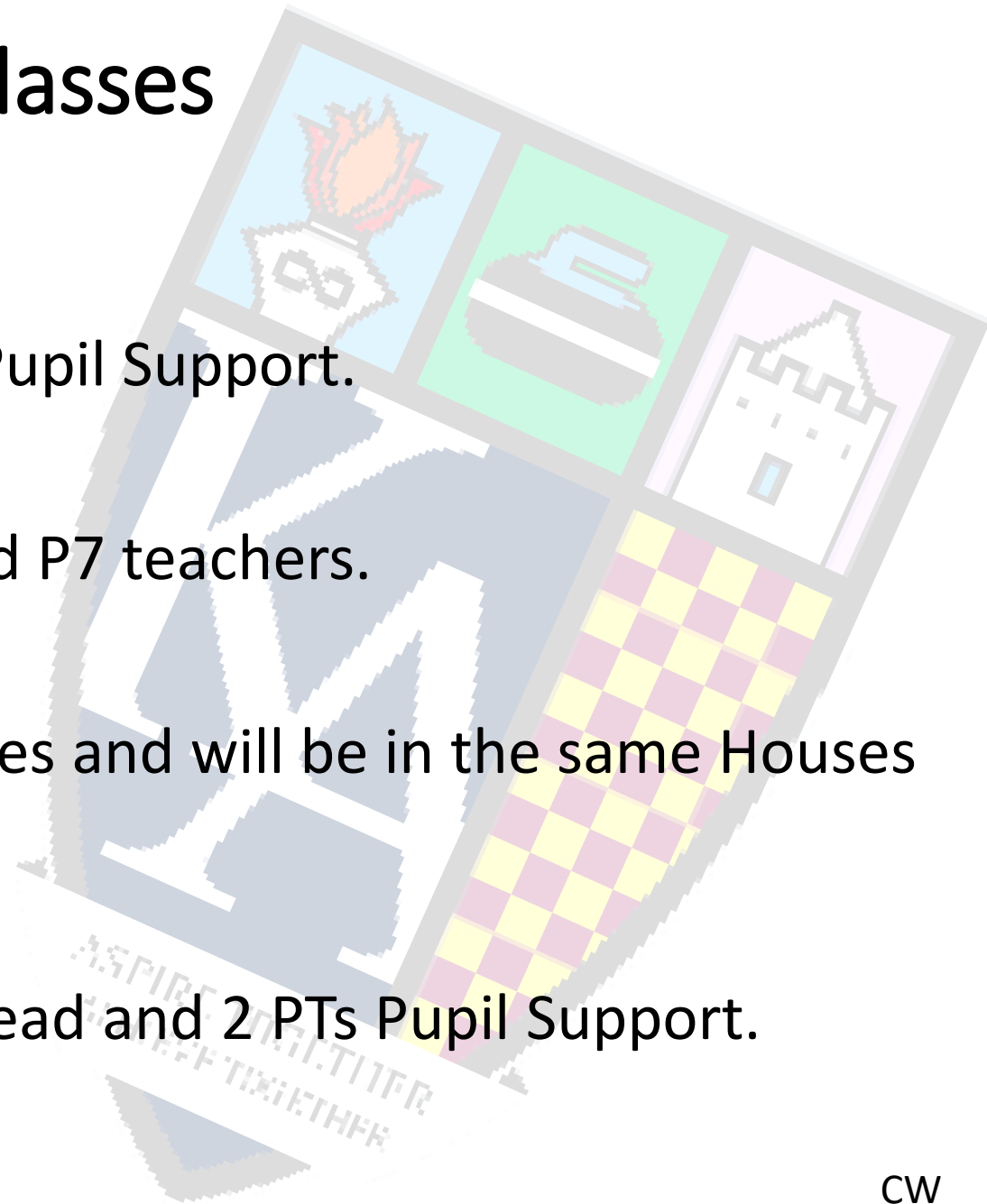
Tuesday 11 <sup>th</sup> March 2025	P7 Information Evening
WB 28 <sup>th</sup> April 2025	Subject department visit 5 - TBC
Wednesday 21 <sup>st</sup> May 2025	P7 Transition day 1
Thursday 22 <sup>nd</sup> May 2025	P7 Transition day 2
Friday 23 <sup>rd</sup> May 2025	P7 Transition day 3 – SCIENCE DAY

# Our School Day

Monday, Tuesday		Wednesday, Thursday, Friday	
<b>Wellbeing</b>	8.40 – 8.50am	<b>Wellbeing</b>	8.40 -8.50am
<b>1</b>	8.50 – 9.40am	<b>1</b>	8.50 – 9.40am
<b>2</b>	9.40 – 10.30am	<b>2</b>	9.40 – 10.30am
<b>BGE Break</b>	10.30 – 10.45am	<b>BGE Break</b>	10.30 – 10.45
<b>3</b>	10.45 – 11.35am	<b>3</b>	10.45 – 11.35am
<b>4</b>	11.35 – 12.25pm	<b>4</b>	11.35 – 12.25pm
<b>5</b>	12.25 – 1.15pm	<b>5</b>	12.25 – 1.15pm
<b>Lunch</b>	1.15 – 1.55pm	<b>Lunch</b>	1.15 – 1.55pm
<b>6</b>	1.55 – 2.45pm	<b>6</b>	1.55 – 2.45pm
<b>7</b>	2.45 – 3.35pm		

# Kilmarnock Academy – S1 Classes

- Classes will be made up with PTs Pupil Support.
- They consult with all primaries and P7 teachers.
- Pupils will be grouped into 4 Houses and will be in the same Houses as any siblings.
- Each house has a DHT as House Head and 2 PTs Pupil Support.



# Kilmarnock Academy – S1 Classes

- We appreciate this move from P7 to S1 is a HUGE change
- But, it's also hugely exciting
- It's a great chance to make new friends, have new adventures and make new memories.
- Please trust us with the classes we make-up and don't ask for changes – it's unlikely they can be accommodated.
- Allow time for new friendships to form – remember they can see their primary friends at interval and lunch.



# Values

Respect  
Determination  
Compassion  
Integrity





# Red Coin Rewards

Red Coins are rewards given out by staff when pupils demonstrate the school values:

**RE**spect

**D**etermination

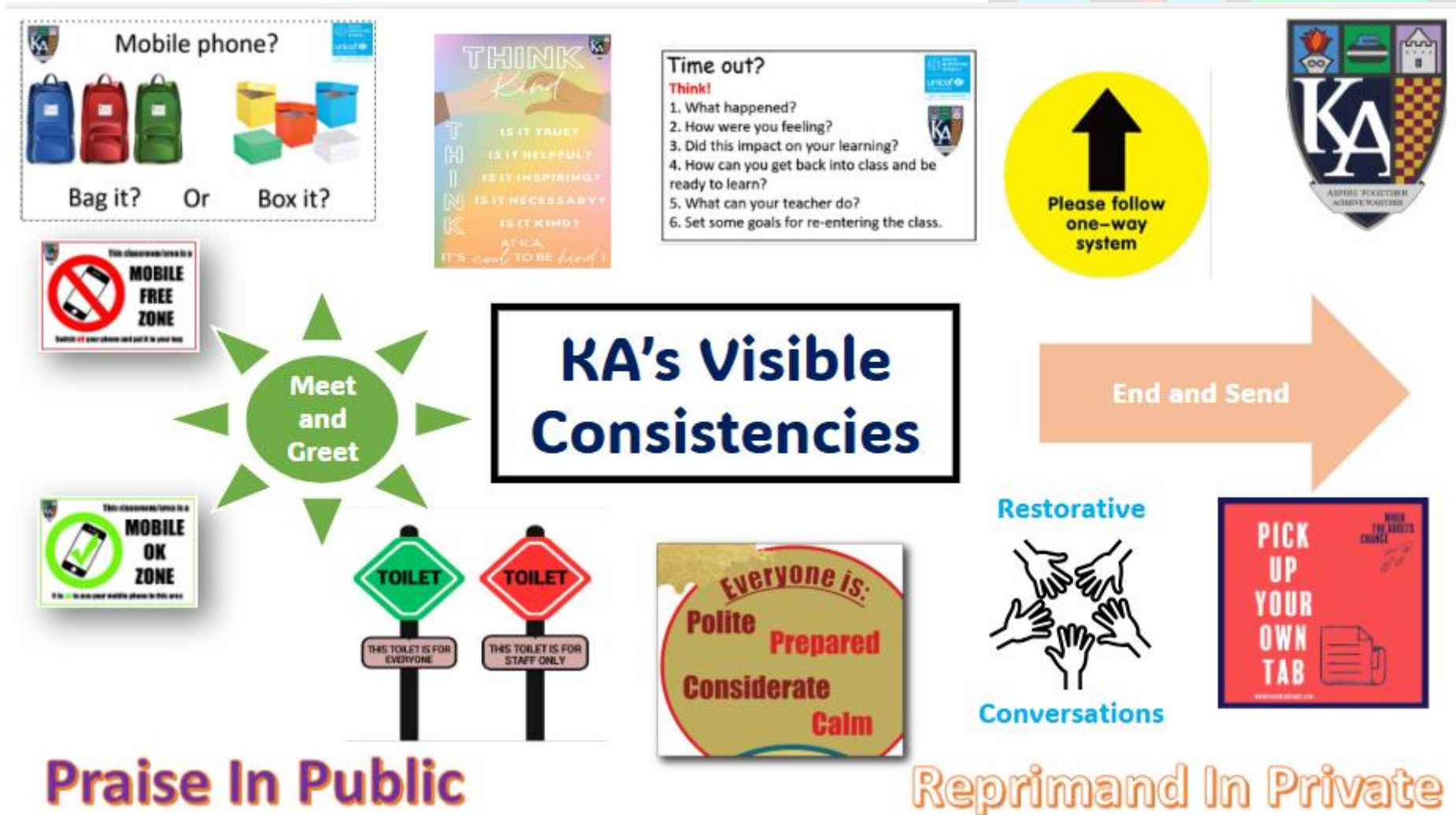
**CO**mpassion

**IN**tegrity

Coins are collected in the container at the school office.  
Each term, the winning House gets a reward.



# Our Visible Consistencies



Attainment

Sports

Fun

Subjects

# Attendance

**YOUR school**



Clubs

Friends



# Rewarding Excellent Attendance!

**We are recognising and rewarding the 2 Wellbeing classes with the best attendance - 1 class from across S1-3 and 1 class from across S4-6.**

**The two Wellbeing classes with the best attendance will be allowed to leave 5 minutes early for lunch all of that week.**

**BE HERE  
BE YOU  
BELONG**



# Uniform



## Uniform Details

**White Shirt & Tie**

**Plain Black Jumper/ cardigan**

**Black school trousers / Skirt**

**Black school shoes**



# Our Uniform

We do not allow:

HOODIES

COLOURED JUMPERS

COLOURED TRAINERS

LEGGINGS

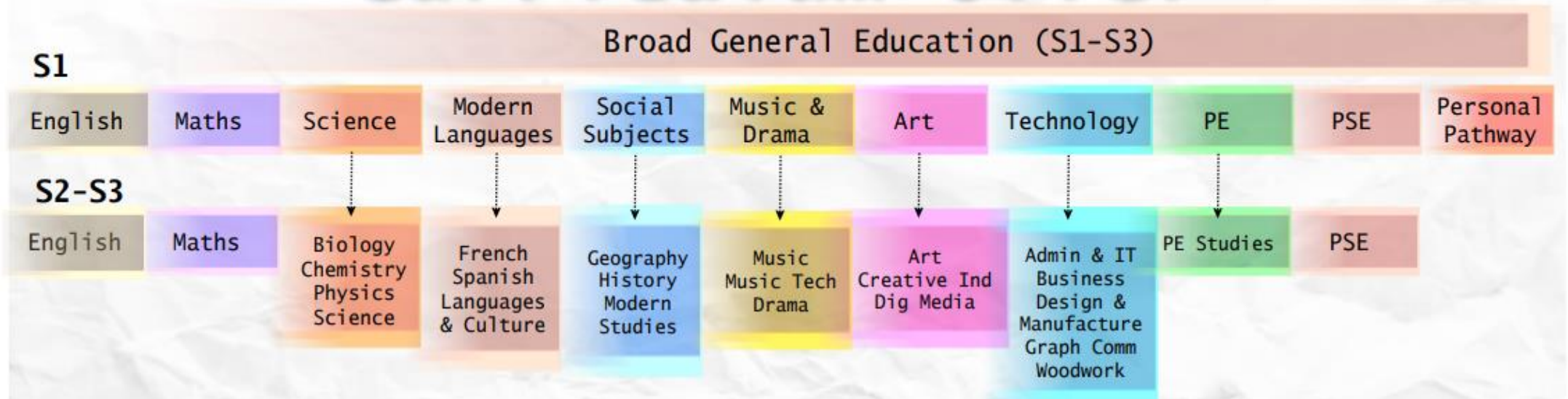
JEANS





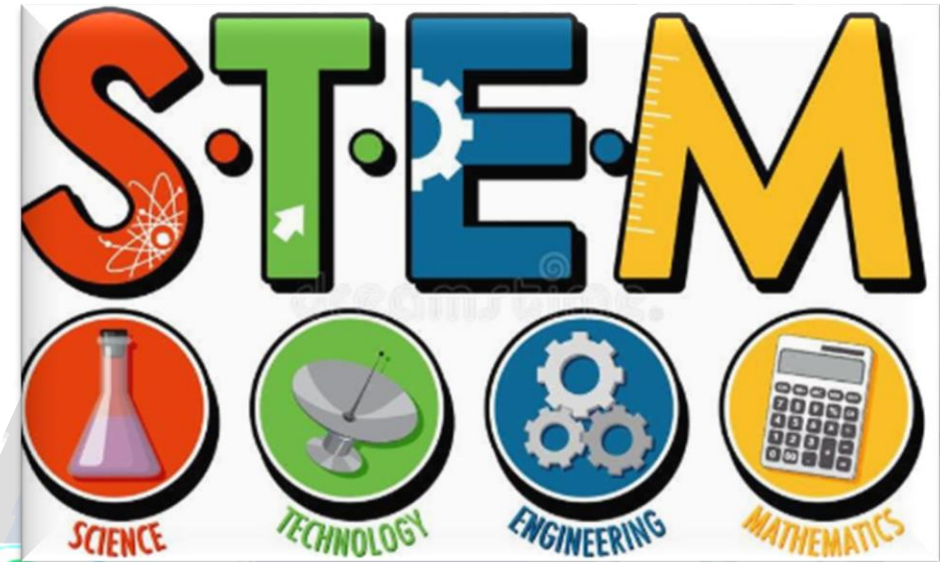
# S1 Curriculum

## Curriculum Offer



# Personal Pathway

- Increase depth of learning
- Develop skills
- Make links between different curricular areas
- Have fun





# Kilmarnock Academy – The Kilmarnock Standard





# Pupil Support Team

House	Pupil Support Teacher
<b>Burns</b> House Head – Mr Johnston	Burns 1 – Mr Colville Burns 2 - Mr Cartner
<b>Fleming</b> House Head – Mrs Mossie	Fleming 1 - Mr Cowan Fleming 2 - Mrs Simpson
<b>Orr</b> House Head – Mrs Wallace	Orr 1 – Miss Bowie Orr 2 - Mrs Snodgrass
<b>Wallace</b> House Head – Mrs Brownlie	Wallace 1 - Mrs Dalgleish Wallace 2 – Miss Sharpe

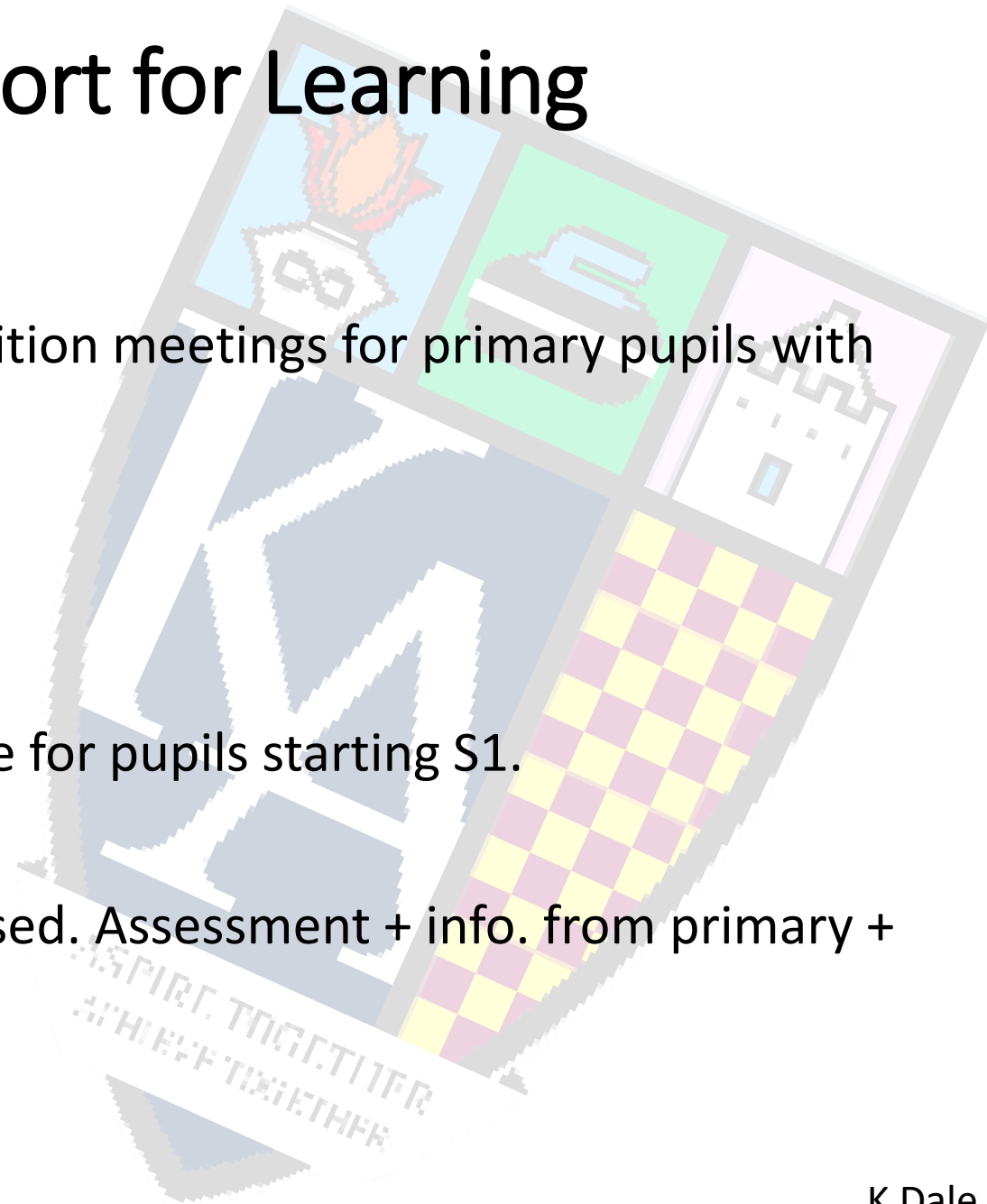
# Kilmarnock Academy – Pupil Support

- Clear involvement in monitoring attendance and timekeeping.
- Link between the school and home – 1<sup>st</sup> point of contact.
- Source of support for pupils in times of need.
- Facilitating communication between the school and outside agencies.
- Encouraging pupils to achieve positive destinations.
- Involved in celebrating achievements and successes.



# Kilmarnock Academy – Support for Learning

- Kilmarnock Academy participate in transition meetings for primary pupils with ASN.
- Enhanced transition.
- Where required, supports can be in place for pupils starting S1.
- After a few weeks in S1, pupils are assessed. Assessment + info. from primary + class teacher observations = support.





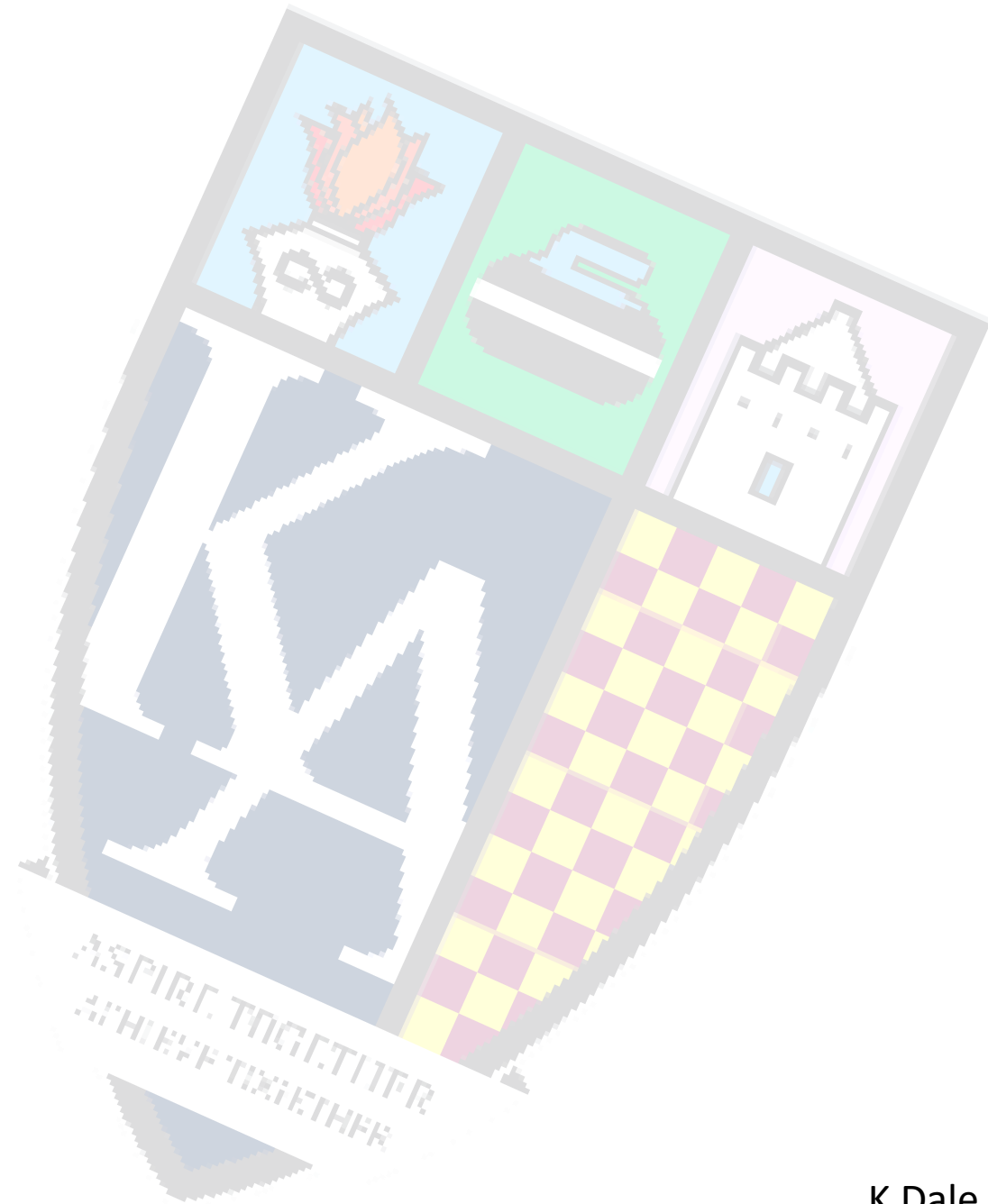
# Available Supports

## Individual Classroom Assistant Support:

- Active Literacy Kit
- First Level Number Intervention

## Targeted Supports:

- Nurture
- Connect



# Wellbeing Period

- The wellbeing period was introduced in August 2020.
- It is a 10 minute slot at the start of each school day where pupils see the same teacher every morning.
- A programme has been created for each year group on key and relevant wellbeing issues e.g. making new friends, managing emotions, peer pressure.
- PTs Pupil Support visit wellbeing classes each morning to check-in with pupils.

# Social Times

- S1 – S3 have their interval at 10.30 – 10.45am
- S4 – S6 are 11.20 – 11.35am
- All Pupils have lunch at 1.15pm.
- They can bring a packed lunch or have a school lunch – some details are on the leaflet and menus are shared on the blog.





# Transport

## Non-statutory subsidised school transport · East Ayrshire Council

### Non-statutory subsidised school transport

🕒 19 December 2024

Following the decision taken at Cabinet on 9 October 2024, the non-statutory subsidised school transport service will be withdrawn at the end of term on 27 June 2025 due to it no longer being sustainable.

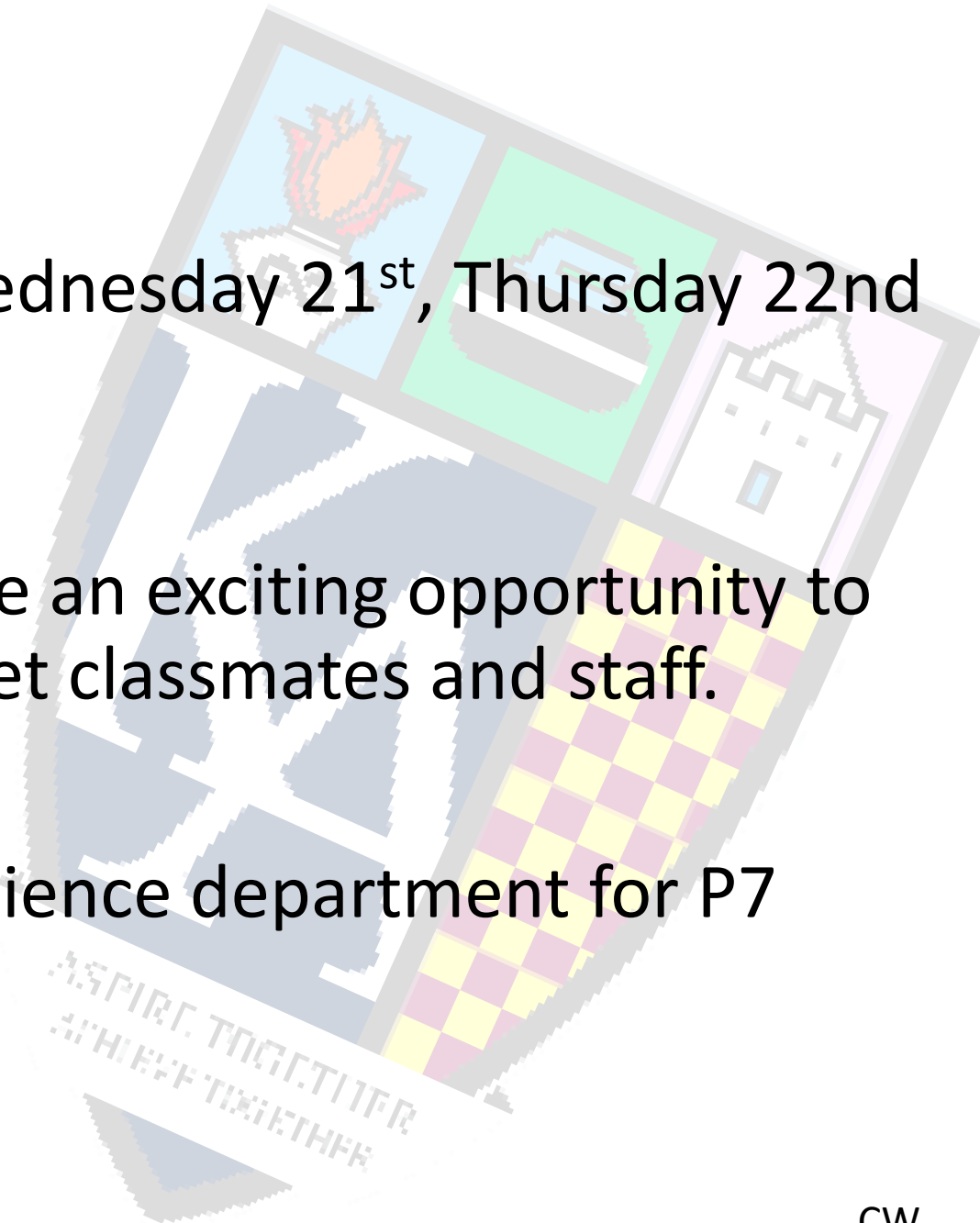
In terms of the direct services from Northwest Kilmarnock that were introduced during the pilot exercise, unfortunately these routes are considered unviable.

The expectation from the new term in August 2025 is that pupils will use existing public transport routes, whereby Stagecoach will look to increase capacity where feasible at peak times, or they may be able to use active travel routes as set out below:

- public bus services with the [Young Persons' Free Bus Travel Scheme](#)
- active travel options such as walking routes to schools which formed the basis of recent engagement work with young people and parents

# P7 Induction Days

- Induction days take place on Wednesday 21<sup>st</sup>, Thursday 22<sup>nd</sup> and Friday 23<sup>rd</sup> May .
- Wednesday and Thursday will be an exciting opportunity to follow the S1 timetable and meet classmates and staff.
- Friday will be a full day in the Science department for P7 Science day!



# Our App



Please keep in touch with Kilmarnock Academy news and all P7 transition information by downloading our school app. The code is 7250





# Our School Achievements



**DIGITAL SCHOOLS**  
AWARDS SCOTLAND

# Contact Details

If you need to get in touch:

[claire.wallace2@eastayrshire.org.uk](mailto:claire.wallace2@eastayrshire.org.uk)

01563 558500







# RESPECT ME



respectme  
Scotland's Anti-Bullying Service

Positive  
Vibes  
Only






# WHAT IS RESPECT ME?

- Scotland's Anti-Bullying Service funded by the Scottish Government and jointly managed by the Scottish Action for Mental Health (SAMH) and LGBT Youth Scotland.
- An initiative to provide staff and pupils involved in the child's life the practical skills and confidence to respond to bullying and bullying behaviours.
- The initiative is driven by a focus on United Nations convention on the Rights of the child.
- It's a support to ensure staff and pupils challenge bullying and stigma at school and within the community ensuring a secure, safe and an encouraging environment.
- The Respect me profile is rolled out nationally to raise awareness of the service and the impact bullying can have.

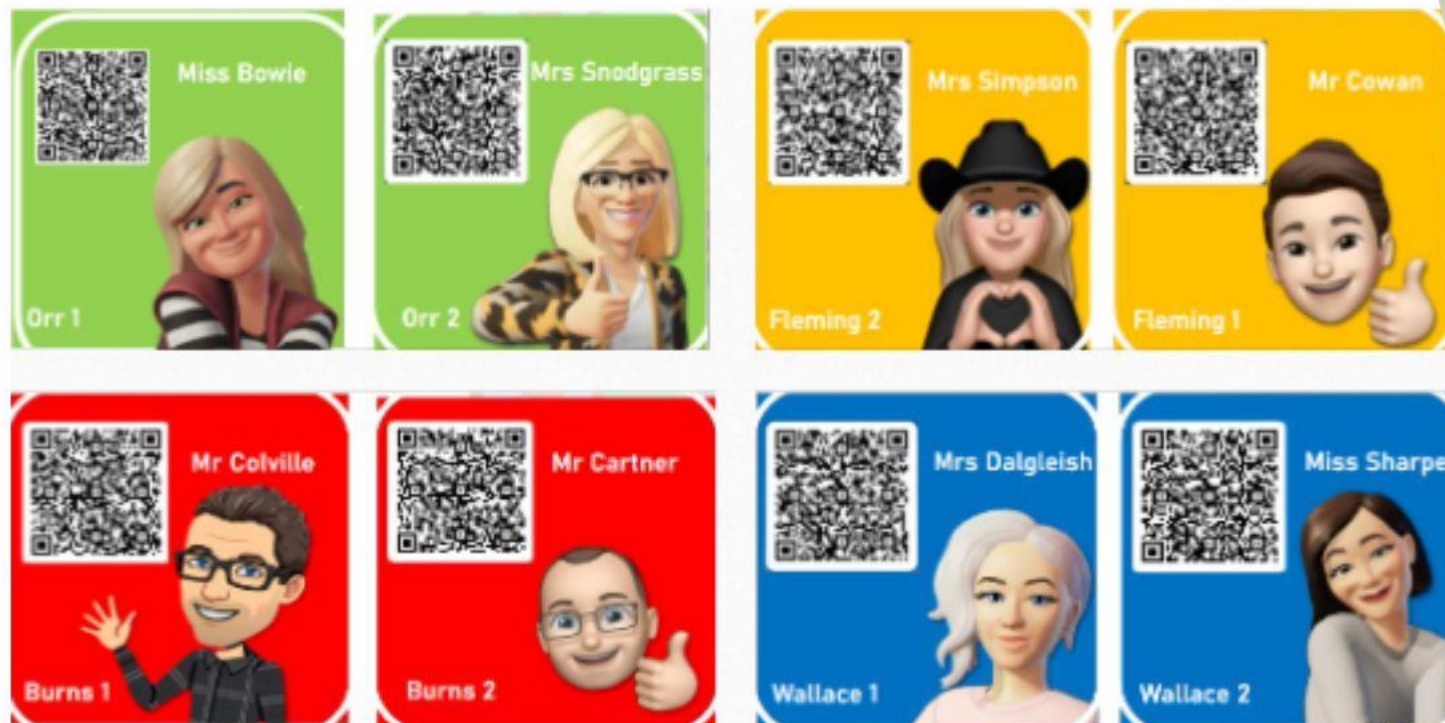


# WHERE WE ARE AT!

- We promote a positive ethos and relationships across our school community via partnership working, parent council, campus cop and strong positive relationships between our staff and pupils.
  - We have a reporting QR code system where pupils can access PTPS with any concerns or worries. These are also on display in the wellbeing classroom in the morning.
  - We promote kindness and a positive ethos by creating motivational graphics and inserts into our wellbeing classes to start the day with a positive attitude.
  - We have a buddy programme when you are partnered with a senior pupil for extra support if you wish. Buddies and Ambassadors are identifiable with the Respect me Badges.
  - In May our Respect me ambassadors and Digital Art Students will be involved in producing a film clip to promote our Respect Me Initiative.
  - Staff and pupils are trained in respect me modules.
  - We Celebrate our positive ethos at anti-bullying week with our Anti Bullying Mascot.
- 



# QR REPORTING SYSTEM





# GOAL

- To ensure that Kilmarnock Academy is respecting, equal, and an inclusive environment .
- To ensure that children and young people can live free from bullying and harassment.
- To encourage children and young people to reach their full potential whilst having fun.
- To ensure all children know a wide range of contacts they can go to if looking for support.

