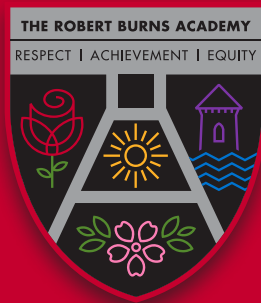




Passport to the Barony Campus



Welcome to
The Robert Burns Academy



A word from Mr Gilchrist

Head Teacher, Barony Campus

Hi everyone,

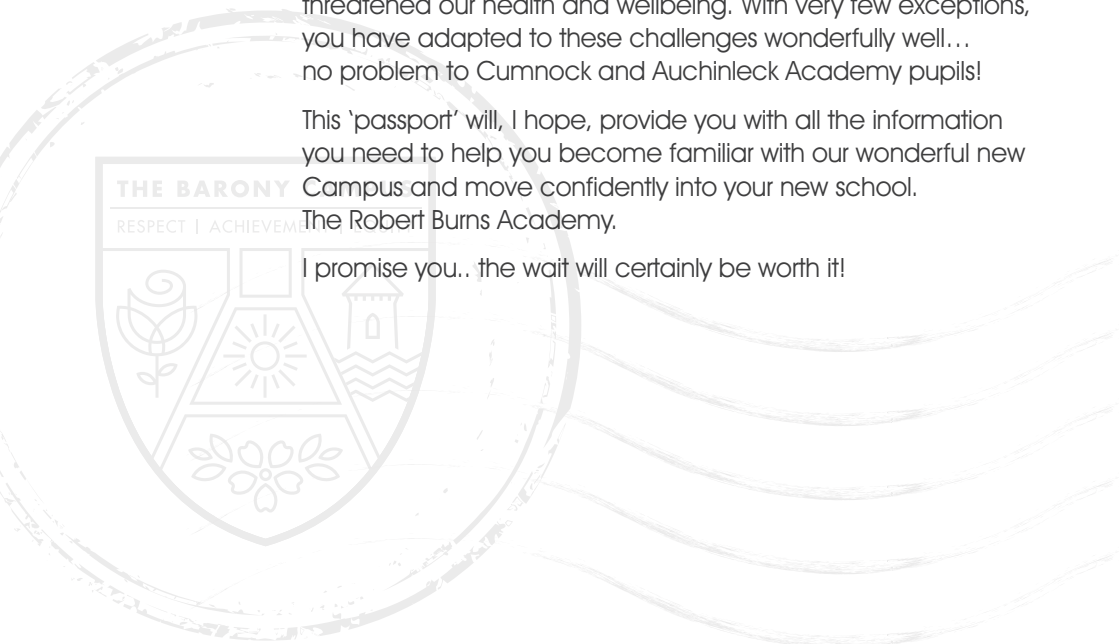
At last, we are almost there!

Firstly, I want to say how proud I am of you for the way you have coped with our 'Split Campus' over the last few weeks and how well you have mixed as groups of young people from the two different academies.

I know it has not been easy getting used to a different school with different buildings, friends and teachers. This has all taken place within a pretty scary time when a horrible virus has threatened our health and wellbeing. With very few exceptions, you have adapted to these challenges wonderfully well... no problem to Cumnock and Auchinleck Academy pupils!

This 'passport' will, I hope, provide you with all the information you need to help you become familiar with our wonderful new Campus and move confidently into your new school. The Robert Burns Academy.

I promise you.. the wait will certainly be worth it!





Campus Vision and Values

At The Robert Burns Academy, we are very proud of our uniform.

The tie was designed and voted for by pupils, while the blazer displays the school badge, which was also created and decided by our school community.

Wearing a school uniform helps promote the identity of the school within the local community and creates an ethos of sharing and pride within the school.

We are a Rights Respecting School, and strive to provide a safe and inspiring place for our young people to learn, ensuring they are respected, nurtured and their achievements are recognised. We firmly believe that with rights come responsibility.

This ethos is embedded in our school values of

Achievement, Respect and Equity.

At The Robert Burns Academy, our pupils are our greatest asset and it is our aim to ensure we provide them with opportunities, which allow them to achieve both in school and the wider community. Everything we do is based on respect, and it is our belief that this must be apparent in everything we do. All pupils deserve the same opportunities, and by placing equity at our core, we ensure this is integral to how we work. Our values were developed in consultation with our school community, making them relevant and applicable.

Being driven by our values ensures we achieve the vision of The Robert Burns Academy:

Where we belong; where we reach our potential.

Class times



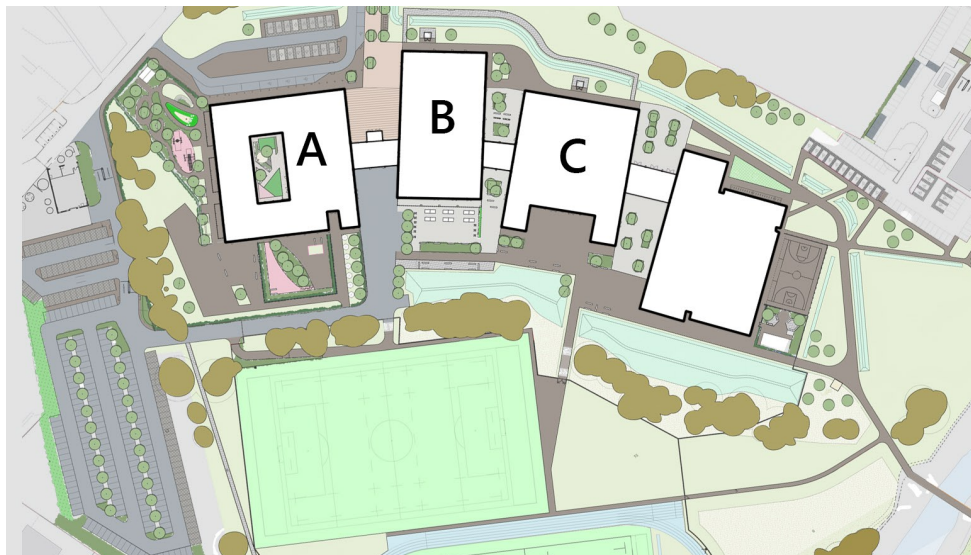
The Robert Burns Academy from Monday 26 October 2020

Monday – Thursday 8.45am – 3.40pm

8.45am - 8.55am	PLP
8.55am - 9.45am	Period 1
9.45am - 10.35am	Period 2
10.35am - 10.50am	Interval
10.50am - 11.40am	Period 3
11.40am - 12.30pm	Period 4
12.30pm - 1.20pm	Period 5
1.20pm - 2.00pm	Lunch
2.00pm - 2.50pm	Period 6
2.50pm - 3.40pm	Period 7

Friday 8.45am – 12.30pm

8.45am - 8.55am	PLP
8.55am - 9.45am	Period 1
9.45am - 10.35am	Period 2
10.35am - 10.50am	Interval
10.50am - 11.40am	Period 3
11.40am - 12.30pm	Period 4
12.30pm	Lunch



Campus Overview

The Barony Campus has three main blocks - A, B and C – each containing flexible learning spaces for all pupils attending the Campus.



The main features of the Barony Campus

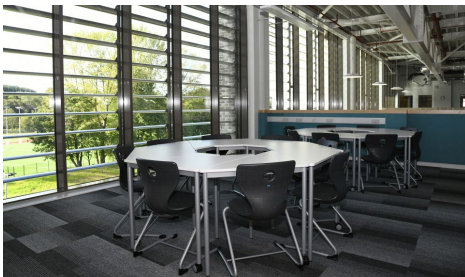
Block A - This block contains Cherry Trees Early Childhood Centre, Lochnorris Primary School and Supported Learning Centre and Hillside ASN centre. In addition to the classrooms, there is a hydrotherapy pool, sensory room and soft play area.

Block B - This block has several shared facilities including Barony Hall, a Community Café, dining halls and an outdoor learning terrace. Secondary departments including Support for Learning, Inclusion Hub, Supported Learning Centre, Drama, Music, Home Economics and Art.

Block C - Shared facilities include a STEM learning plaza and 4D immersive cinema. Secondary departments will include Design & Technology, IT, Science, Social Subjects, Modern Languages, Maths and English.

Sports and Leisure Block - There are four sports halls with associated changing rooms. The outdoor sports facilities include two synthetic pitches and a new 400m all-weather four-lane running track.









Getting to the campus

Please see the **TRAVEL PLAN map** on page 17.



First day arrangements

All pupils have been given a handout with details of where to go on their first day at the Campus.

All pupils will assemble on the sports pitches as soon as they arrive and will be organised into their PLP classes. Once registered, their PLP teacher will lead them into the building and to their PLP class for an extended PLP period.

There will be additional staff in the building and on the sports pitches to assist with this. The extended PLP period will last for the duration of the morning. During this time, pupils will get a chance to explore the building and will be given information on where to go during interval and lunch, as well as where to go during a fire evacuation.



Where do I go to find my class?

Please see the **BUILDING GUIDE** on page 18.

Frequently asked questions



Finding my way

Q. Are pupils going to get extra time to go to classes?

A. There will not be any official extra time for pupils to get to classes. However, staff will be very understanding that pupils may be late to classes for the first few days until everyone finds their way around. Remember the building is new to the staff too!

Q. What part of the Campus is The RBA and the associated playground?

A. Blocks B and C make up The Robert Burns Academy and pupils can use the playgrounds behind these blocks.

Q. Will there be a one-way system in operation?

A. There will be one-way systems for the stairwells and pupils will use designated stairwells to access certain floors of the building. Staff will also be available in certain areas to signpost pupils to where they need to go.

Q. What happens if we get lost on the first day?

A. We expect that some pupils will get lost on the first day. Teachers will give pupils the first few days to become familiar with the building and understand that pupils may get lost.

Q. Could pupils get a map (physical or digital) of the Campus to help them find their way around?

A. Pupils will get both a physical and digital map.

Q. Will we get to visit the school beforehand?

A. Pupils will not be able to visit the school beforehand. However, a small, identified group of young people may be able to visit the school just before it opens.

Q. Will there be guides to show us about?

A. We are planning that senior pupils or staff will guide younger pupils around the building on the first day.



Timetable

**Q. Will timetable and teachers change?
Will PLP classes be the same?**

A. The timetable will change, so you will go to your subjects at different periods but your subjects will not change. Your teachers will change in some subjects, but not necessarily all of them. This will include PLP. You will be with the same PLP class but will likely have a new PLP tutor. Make sure you know which PLP class you are in.

Q. Will there be any new subjects offered?

A. As we are already partway through the academic year, you will not be able to select any new subjects. The option process for your subjects next year will likely begin around December/January. There could be new subjects appearing at this time.

Q. Will the shape of the day be the same as now (also with half day Friday)?

A. The school week will remain the same, 4 long days and P1-4 on Friday.



General

Q. How many pupils will be in the Campus?

A. The Robert Burns Academy has approximately 1650 pupils, and the whole Campus will have over 2000 pupils.

Q. Will Primary have different times to Secondary?

A. The Campus is unique in that the primary school also has periods, which are at the same time as the secondary school. The primary pupils will attend between the hours of 9am to 3pm Monday to Friday.

Q. Will all of the different schools start back the same day? (Primary/Secondary/ECC etc.)

A. The Robert Burns Academy and secondary Supported Learning Centre opens on Monday 26 October, while the other schools and ECC will open in November.

Q. Will there be corridors connecting all the different buildings or will you need to go outside to get to other classes?

A. The Robert Burns Academy has corridors that connect all the different buildings and a bridge runs from one end of the Campus to the other. It means you can walk to all your classes without going outside. Some pupils may prefer to go to Block C (PE) by going outside, while some may prefer using the bridge to get there. The choice is yours!

Q. Are Coronavirus policies still going to be the same?

A. There will still be Coronavirus policies in place. It is incredibly important that you make sure you are wearing your face covering in corridors, that you are using the hand sanitisers that will be available throughout the school, and that you are socially distancing from other pupils and staff members as much as you can.

Q. Will there be a different entrance to the school for Primary and Secondary?

A. Yes, there are different entrances.

Q. Will there be new sports teams to join?

A. Departments across The Robert Burns Academy will offer lots of exciting new clubs and activities as soon as Coronavirus restrictions allow them to do so. Remember - this is your school! If there are clubs you would like to see starting up, let your Guidance Teacher or Depute Head Teacher know.



Lunch times

Q. Will lunchtime be staggered?

A. Yes, there will be separate lunch breaks for primary and secondary.

Q. How will lunchtime be organised?

A. There will be a number of spaces within the Campus where pupils can have lunch including outdoor tables, two dining halls and a senior dining area (Spanish steps).

Q. Are there any crush halls?

A. No, but there are a number social areas inside and out.

Q. Will the catering be the same?

A. Yes, you will pre-order your school meal as normal and there will also be a grab-n-go option for senior pupils.



Transport

Q. Where are the drop off and pick up points?

A. The drop off and pick up points are highlighted on the Barony Campus Travel Plan, which is available on the school blog. The Police will be assisting with traffic management over the first few days of the Campus opening.

Q. What time will the bus pick us up?

A. The current bus pick up times will remain in place. The only change will be that all buses will leave the campus at the same time at the end of the school day.

Q. Will the buses come to the transport hub at the same time?

A. The buses will all arrive between 8.20am and 8.30am, the buses will be split across the bus bays at the front and back of Cumnock Academy to avoid congestion.



Facilities

Q. Is there a pool that we can go in during PE?

A. There is no pool within the PE department but we will be working in partnership with Visions to ensure pupils have access to this facility.

Q. Will there be lockers and common rooms available for senior pupils?

A. There are no lockers for pupils, but there are designated social areas for senior pupils.

Q. Are the lifts only for people who have a pass?

A. The lift will only be accessible for pupils who have a pass.

Q. Will the library be open at break and lunch?

A. The library will not be open at lunch/break times to ensure year group 'bubbles' do not mix, this is something that we will change when it safe to do so.

Q. Will there be air conditioning?

A. Each room has its own thermostat, which regulates the temperature in the room.

Q. Are the astroturf pitches the only outdoor playing fields for sport?

A. In addition to the astroturf pitches, there will be two full size grass pitches created on the site of the old Cumnock Academy.

Q. Will there be all new equipment?

A. The classrooms have all been kitted out with brand new furniture and lots of new equipment has been supplied for practical subjects.

Q. Will there be a public WIFI password for pupils?


A. The public WIFI will not be available for pupils to connect to.

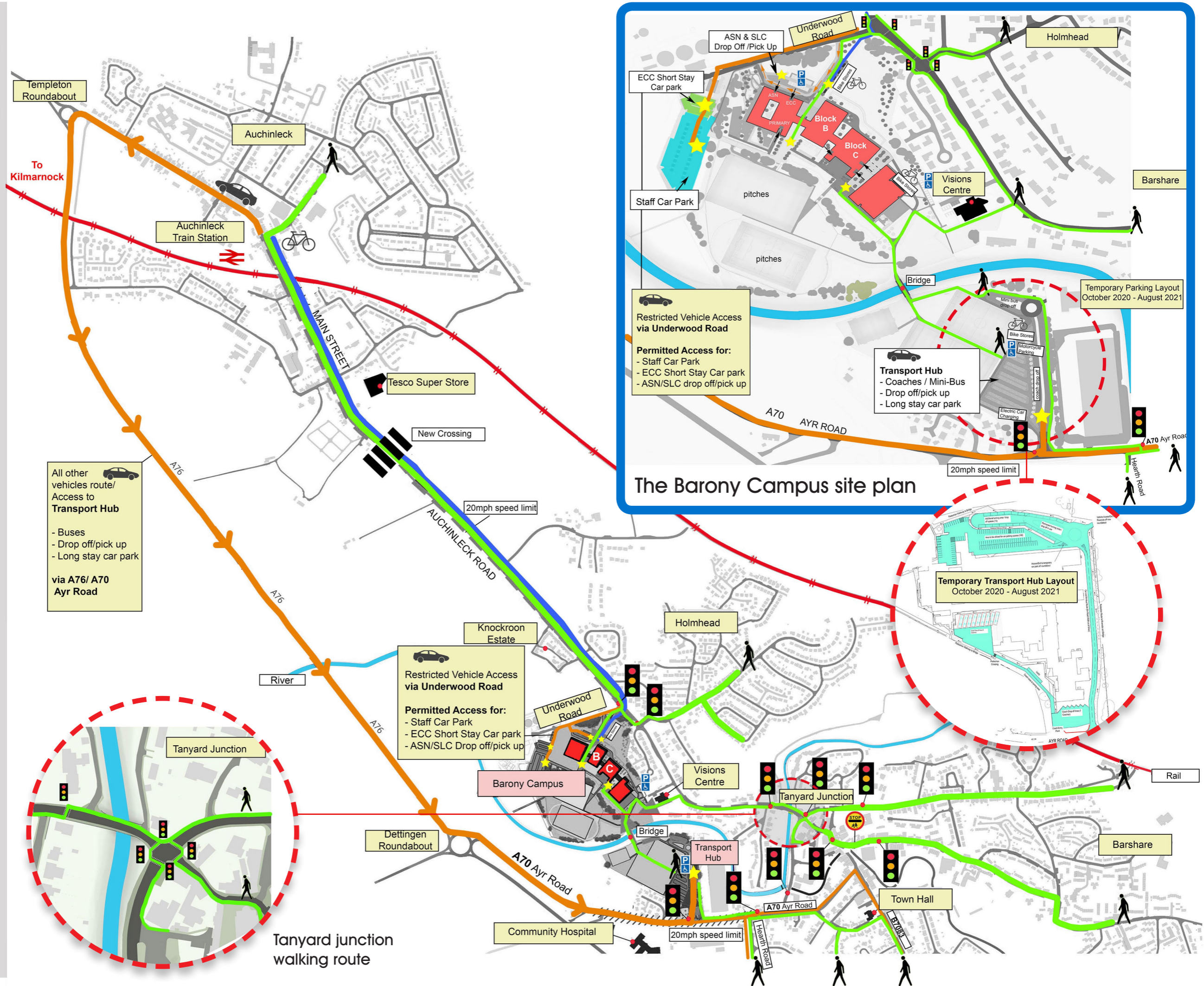
THE BARONY CAMPUS

RESPECT | ACHIEVEMENT | EQUITY



The Barony Campus Travel Guide

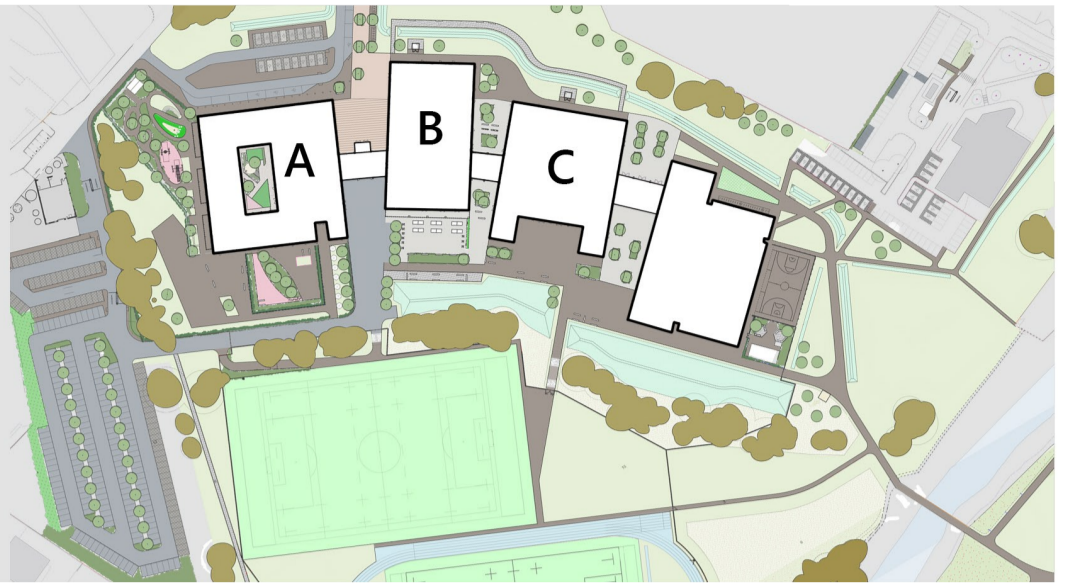
-  Destination Point
-  Railway
-  Signalled Crossing
-  New Zebra Crossing
-  Vehicle Route
-  Walking Route
-  Cycle Route
-  Crossing Patrol
-  Blue Badge Holders Parking



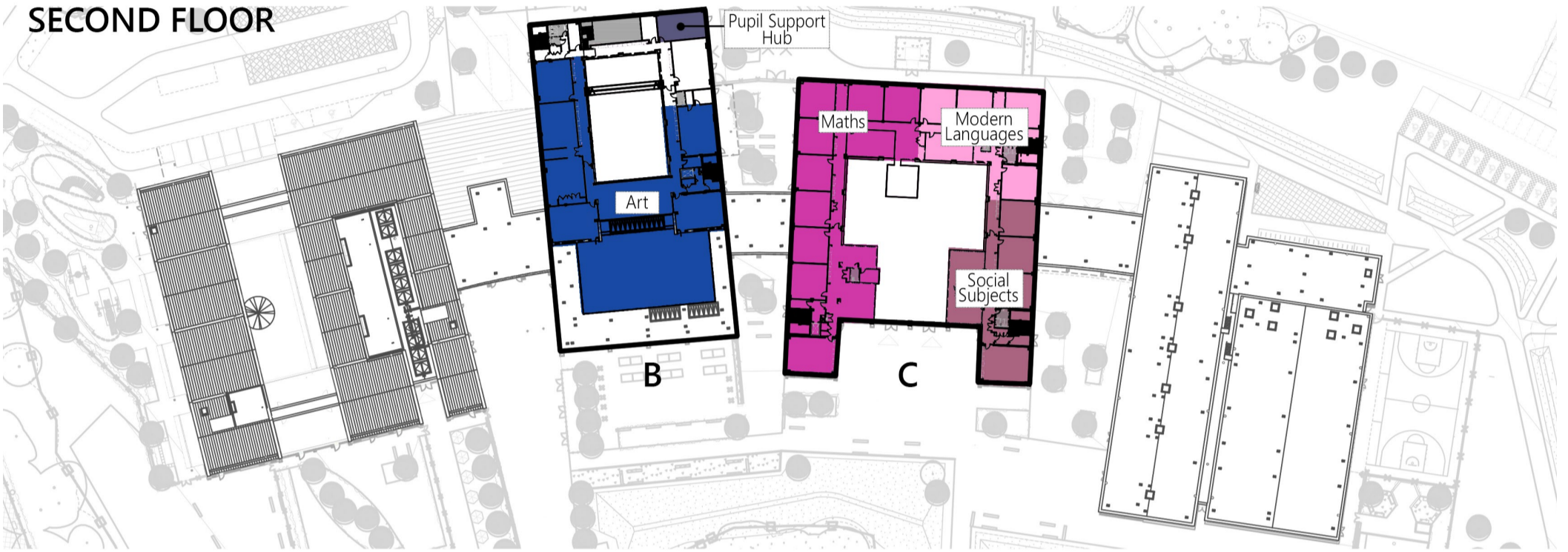


The Barony Campus BUILDING GUIDE

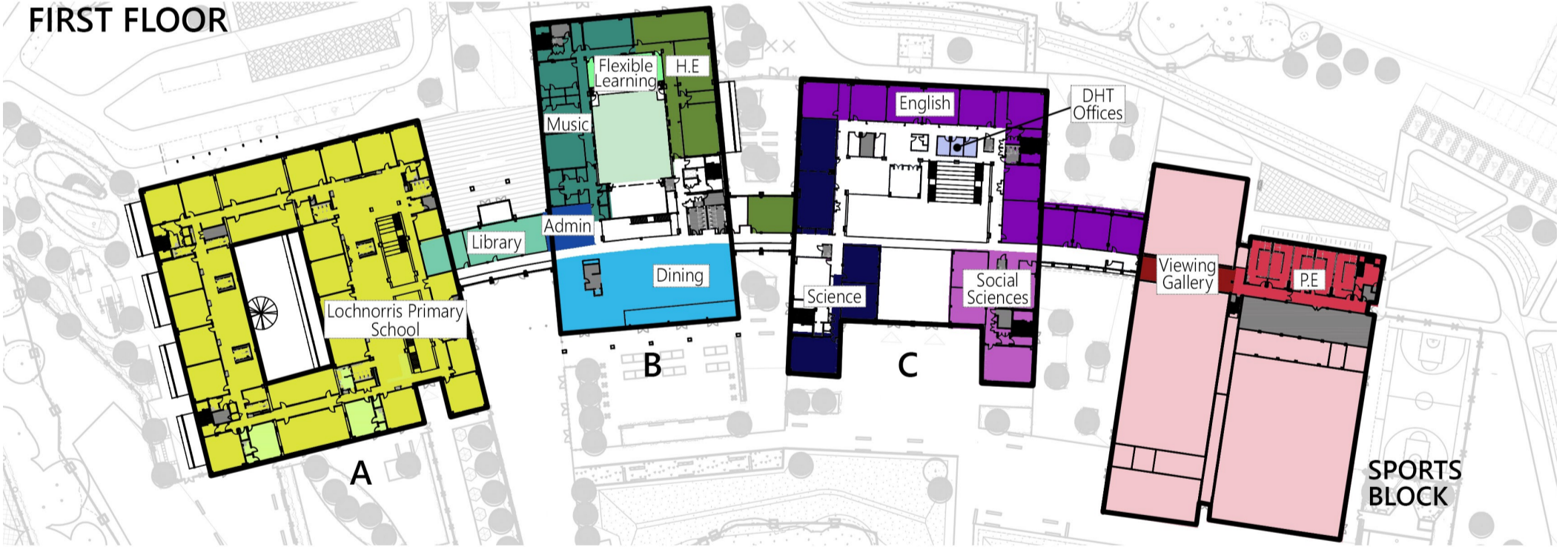
- | | |
|---|---|
| ● Reception | ● Pupil Support Hub |
| ● Library | ● Technical |
| ● Pupil Support Dpt. | ● Science |
| ● Auditorium | ● DHT Offices |
| ● SLC | ● Business & Computing |
| ● Drama | ● English |
| ● Dining | ● Social Sciences |
| ● Admin | ● Maths |
| ● Music | ● Modern Languages |
| ● Flexible Learning | ● Social Subjects |
| ● H.E | ● P.E |
| ● Art | ● Viewing Gallery |



SECOND FLOOR



FIRST FLOOR



GROUND FLOOR

