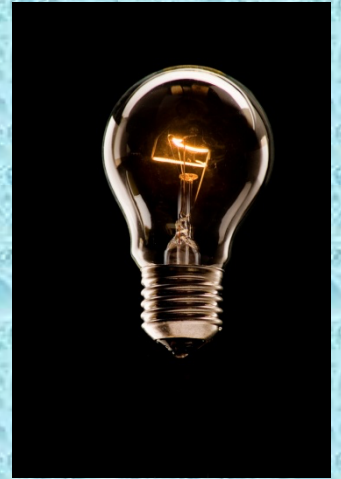




Think of a number



Think of a number
between 10 and 50

Double it



Add 6



Take 2



Halve the number



**Take away the number
you thought of**



Write down the number you are left
with.....



I think the
number
is.....

2



That was clever
wasn't it?



*Let's try
another
one...*

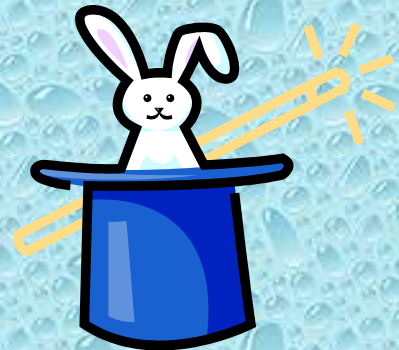
**Think of an
even number
less than 50.**



Halve it



Add 19

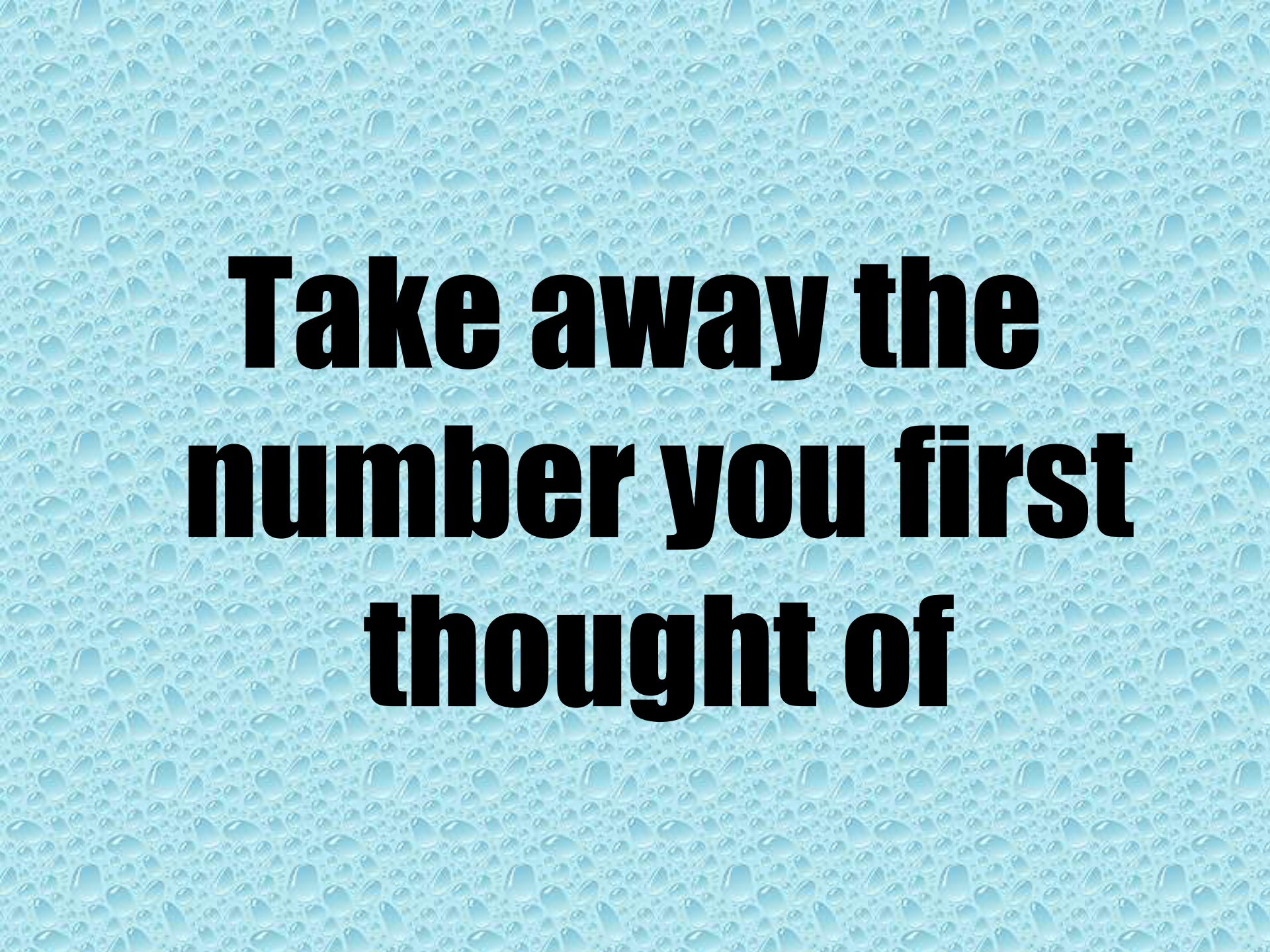




Take away 9

Double





**Take away the
number you first
thought of**

Write down the number you are left
with.....



I think the
number
is.....

20



Plenary

With a partner, discuss why they think a number puzzles always end up with the same number?

Can you make up one of your own?

