

# Curriculum Consultation

St. Joseph's Academy  
Thursday 6<sup>th</sup> December 2018



*working together makes great learning*



# Understanding CfE

- From nursery until the end of S3 is known as the Broad General Education (BGE)
- SQA courses do not begin until **S4**
- All pupils have a legal right to access content across all eight curricular areas
- 33 lessons per week



*working together makes great learning*



# Curricular Areas

## Expressive Arts

Drama, Art, Music, Music Technology

## Social Studies

Geography, History, Modern Studies



*working together makes great learning*



# Curricular Areas

## Sciences

Physics, Biology, Chemistry

## Languages

English

French and Spanish



*working together makes great learning*



# Curricular Areas

## Technologies

Graphics, Practical Woodwork, Design and Manufacture  
Business, Administration, Accounts, Computing

## Health and Wellbeing

PE

Home Economics, Hospitality, Fashion and Textiles

PSE



*working together makes great learning*



# Curricular Areas

Mathematics

Religious and Moral Education

RERC

Philosophy



*working together makes great learning*



# Current S1/S2 Model

<b>Mathematics</b> 5 lessons per week	<b>Languages</b> 8 lessons per week	<b>Health and Wellbeing</b> 5 lessons per week	<b>Religious and Moral Education</b> 2 lessons per week
5 x Mathematics	5 x English 3 x Modern Languages	3 x PE 1 x PSE 1 x Home Economics	2 x RE
<b>Expressive Arts</b> 4 lessons per week	<b>Social Subjects</b> 3 lessons per week	<b>Science</b> 3 lessons per week	<b>Technologies</b> 3 lessons per week
2 x Music 2 x Art	3 x Social Subjects  Integrated course offering Geography, Modern Studies and History	3 x Science  Integrated course offering Biology, Chemistry and Physics	1 x Technical  1 x Business  1 x Computing Science



*working together makes great learning*



# Current S3 Model

## Compulsory

Maths x 5

English x 5

Modern Languages x 4

RE x 2

PE x 2

PSE x 1

## Element of Choice

Science (**select two**) x4

Biology x2

Chemistry x2

Physics x2

Social Subjects (**select two**) x4

History x2

Modern Studies x2

Geography x2



*working together makes great learning*





# Current S3 Model

## Free Choice Columns

Column A x3 per week (one choice)

Art  
Music  
PE  
Design and Manufacture  
Graphics

Column B x3 per week  
(with rotations throughout the year)

Art  
John Muir Award  
Philosophy  
Music Technology  
Dance  
Practical Woodwork



*working together makes great learning*



# Problems with the current S3 model

Complete absence of the following subjects:

- Home Economics/Hospitality
- Fashion and Textiles
- Drama
- Computing Science
- Business Management
- Administration and IT



*working together makes great learning*



# Problems with the current S3 model

Despite an obligation to maintain delivery across all curricular areas, it is possible to completely bypass:

- Expressive Arts (Drama, Art, Music)
- Technologies (Business, Administration, Computing, Design and Manufacture, Practical Woodwork)
- Both Expressive Arts and Technologies

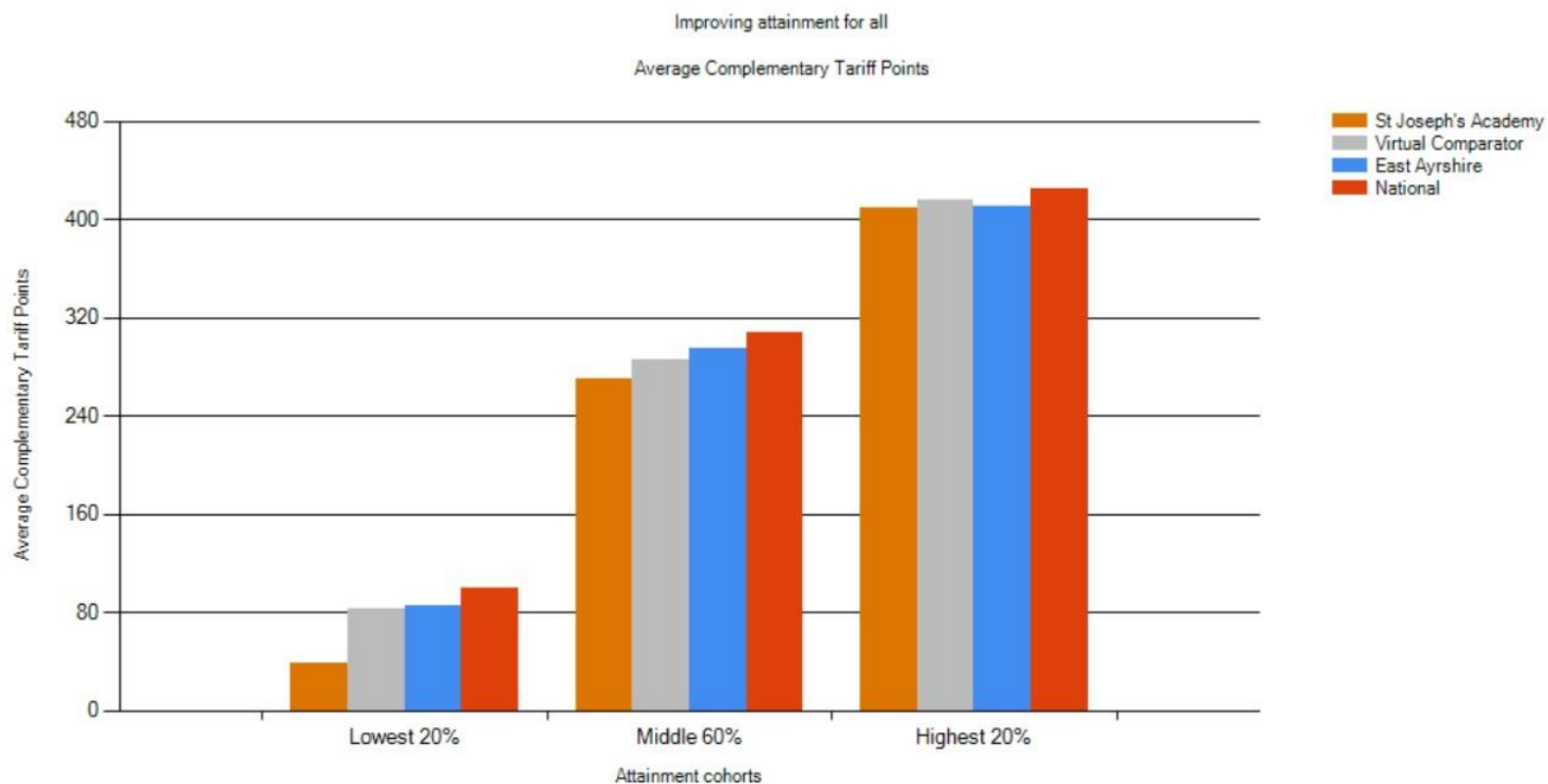


*working together makes great learning*



# S4 Examination Data

The selected year is 2018

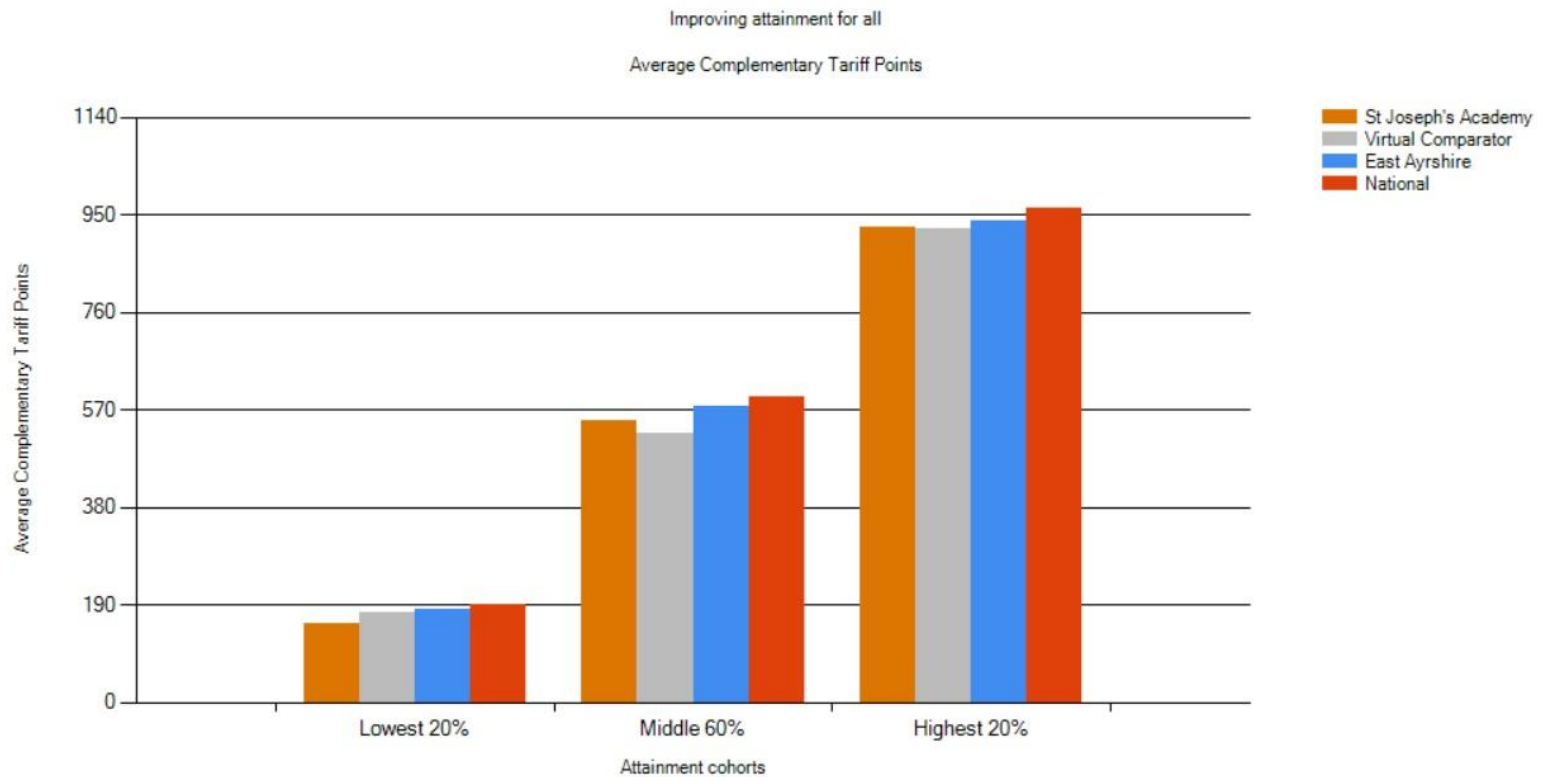


*working together makes great learning*



# S5 Examination Data

The selected year is 2018



*working together makes great learning*



# Problems with the current S3 model

Lack of flexibility

- Maths, English, 1 Modern Language, 1 Science, 1 Social Subject
- Then any two from

PE

Art

Music

Design Manufacture

Practical Woodwork

Additional Science or Social Subject



*working together makes great learning*



# Problems with the current S3 model

## Inflated Class Contact Time

Maths 5 periods per week

English 5 periods per week

Modern Languages 4 periods per week

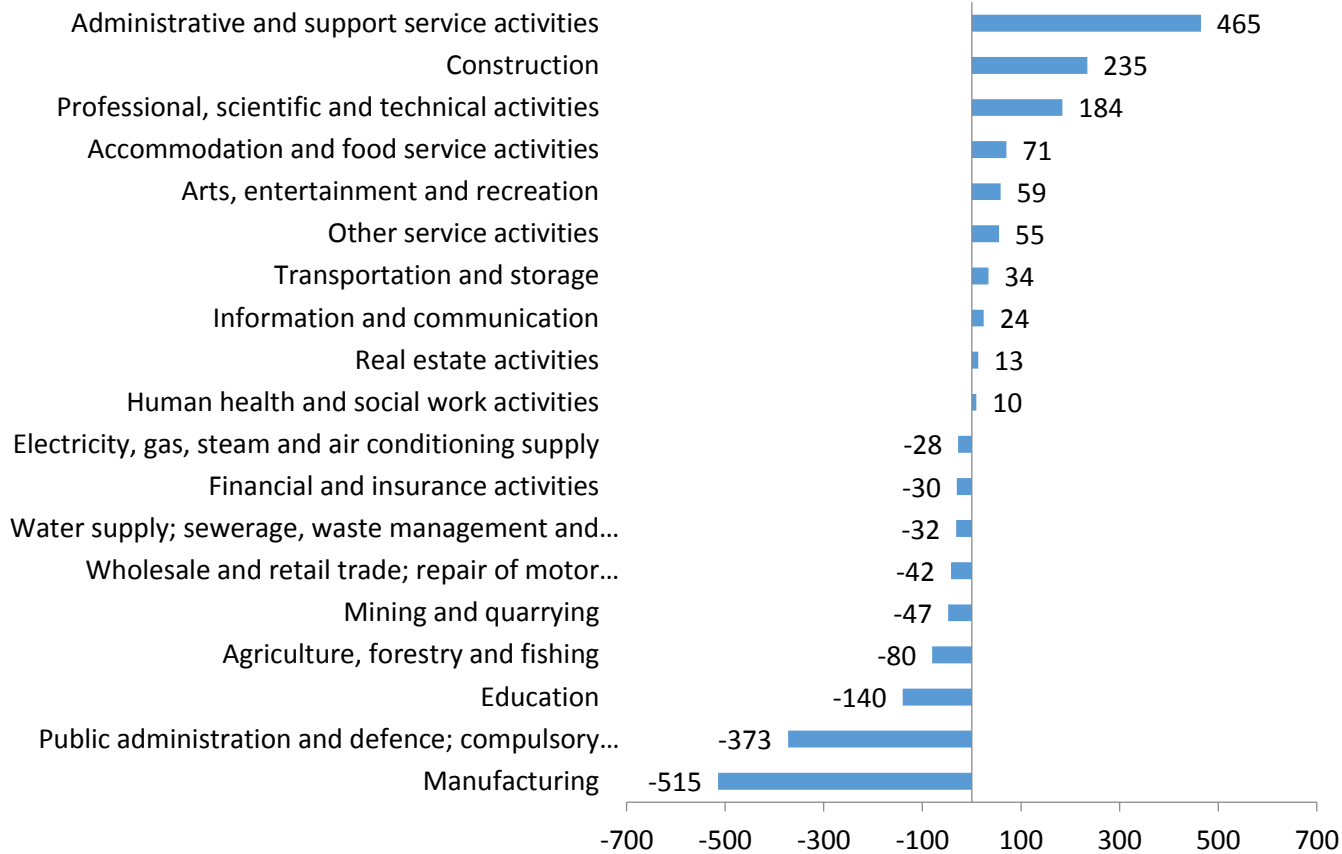
Highly unusual allocation



*working together makes great learning*



# Changes in Jobs by Sector (Levels), Forecast 2016-2027



*working together makes great learning*

Changes in levels of jobs in local authority

Source: Oxford Economics; workplace based



FIDELIS · JUSTUS · PRUDENS



# Problems with the current S3 model

Complete absence of the following subjects:

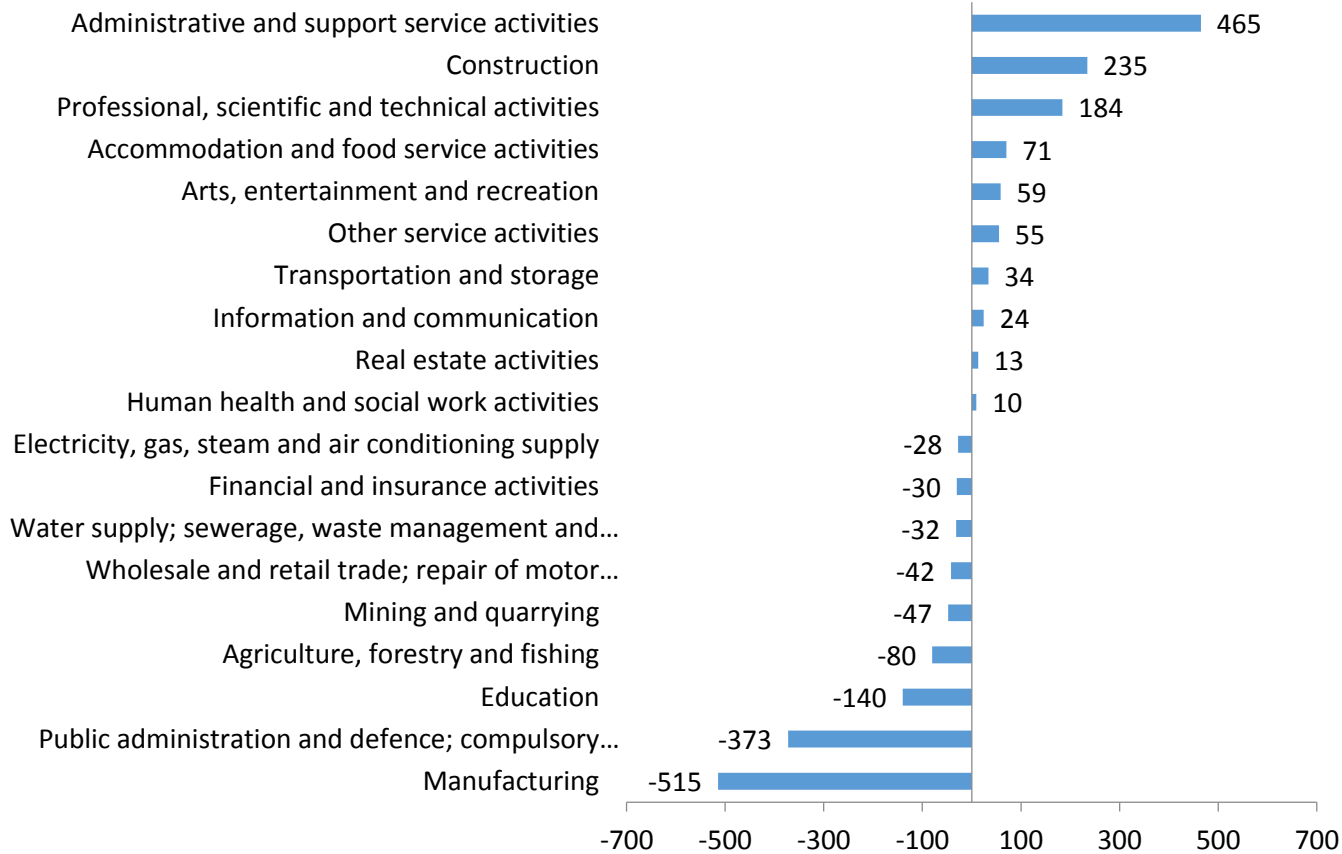
- Home Economics/Hospitality Growth area
- Fashion and Textiles
- Drama Growth area
- Computing Science Growth area
- Business Management Growth area
- Administration and IT Growth area



*working together makes great learning*



# Changes in Jobs by Sector (Levels), Forecast 2016-2027



*working together makes great learning*

Changes in levels of jobs in local authority

Source: Oxford Economics; workplace based



FIDELIS - JUSTUS - PRUDENS

# Problems with the current S3 model

Complete absence of the following subjects:

- Home Economics/Hospitality
- Fashion and Textiles
- Drama
- Computing Science
- Business Management
- Administration and IT

**No progression to National 4, National 5 or Higher in any of the above subjects**



*working together makes great learning*



# Proposed S3 Model

## Compulsory

Maths x4

RE x2

English x4

PE x2

Modern Languages x3

PSE x1

## Element of Choice

Science (**select two**) x4

Biology x2

Chemistry x2

Physics x2

Social Subjects (**select two**) x4

History x2

Modern Studies x2

Geography x2



*working together makes great learning*



# Proposed S3 Model

## Element of Choice

Arts and Wellbeing (**select two**) x4

Music x2

Art x2

Drama x2

PE x2

Hospitality x2

Technologies (**select two**) x4

Business x2

Administration x2

Computing Science x2

Design and Manufacture x2

Practical Woodwork x2



*working together makes great learning*



# Proposed S3 Model

## Element of Choice

Arts and Wellbeing (**select two**) x4

Music x2

Art x2

**Drama** x2

PE x2

**Hospitality** x2

Technologies (**select two**) x4

**Business** x2

**Administration** x2

**Computing Science** x2

Design and Manufacture x2

Practical Woodwork x2



*working together makes great learning*



# Proposed S3 Model

## Flexibility

Rank order, where first choice is guaranteed, second 95% guaranteed

Flexibility to meet needs of more learners



# Proposed S3 Model - Summary

- Meets national guidance
- Broadens experience to be inclusive of all learners
- Provides timetabling flexibility
- Adds subjects absent from the curriculum (in time)
- Takes account of labour market intelligence



*working together makes great learning*





# What happens next?

Consultation live on Friday evening

Runs until Monday 17<sup>th</sup> December 2018

Discussion at Parent Council on 21<sup>st</sup> January



*working together makes great learning*

