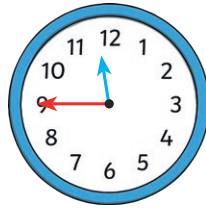


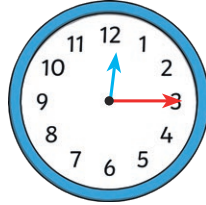
Digital and Analogue Clocks

Match the different ways of representing the same time.

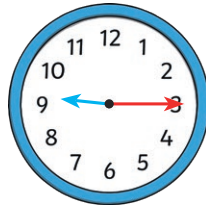
Quarter past nine



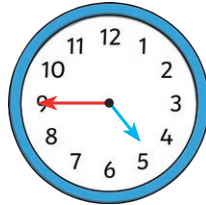
Quarter to five



Quarter to twelve



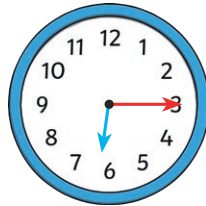
Quarter past six



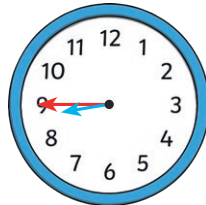
Quarter to nine



Quarter to seven



Quarter past four



Quarter past twelve



Digital and Analogue Clocks Answers

Match the different ways of representing the same time.

Quarter past nine

Quarter to five

Quarter to twelve


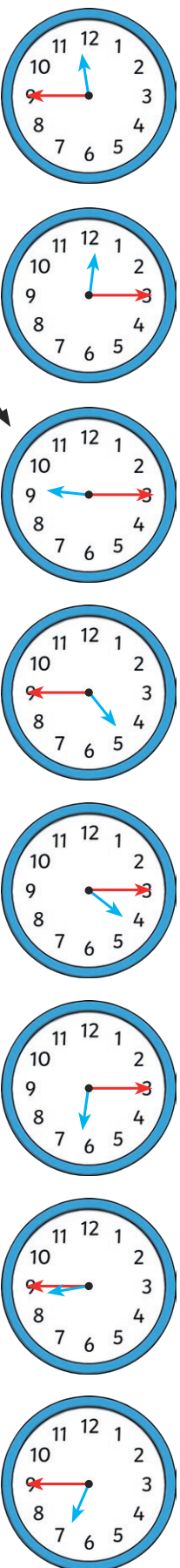
Quarter past six

Quarter to nine

Quarter to seven

Quarter past four

Quarter past twelve



12:15

04:15

11:45

08:45

09:15

06:45

04:45

06:15