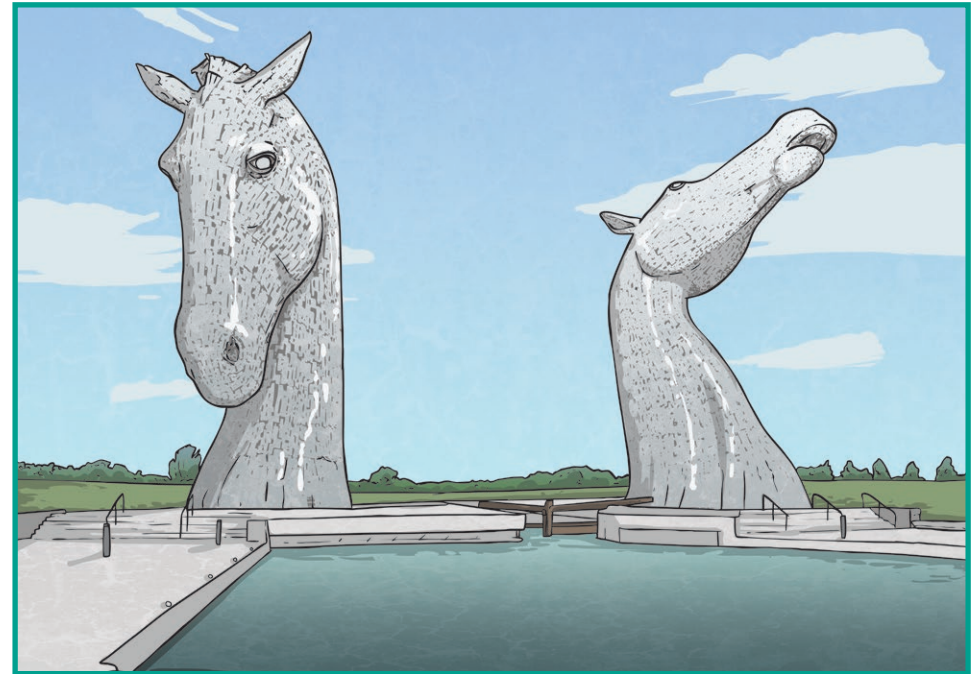


Scottish Landmarks

Fact Cards



The Kelpies



Location:

Helix Park, Falkirk.

Completed:

27th November 2013

Height:

30m

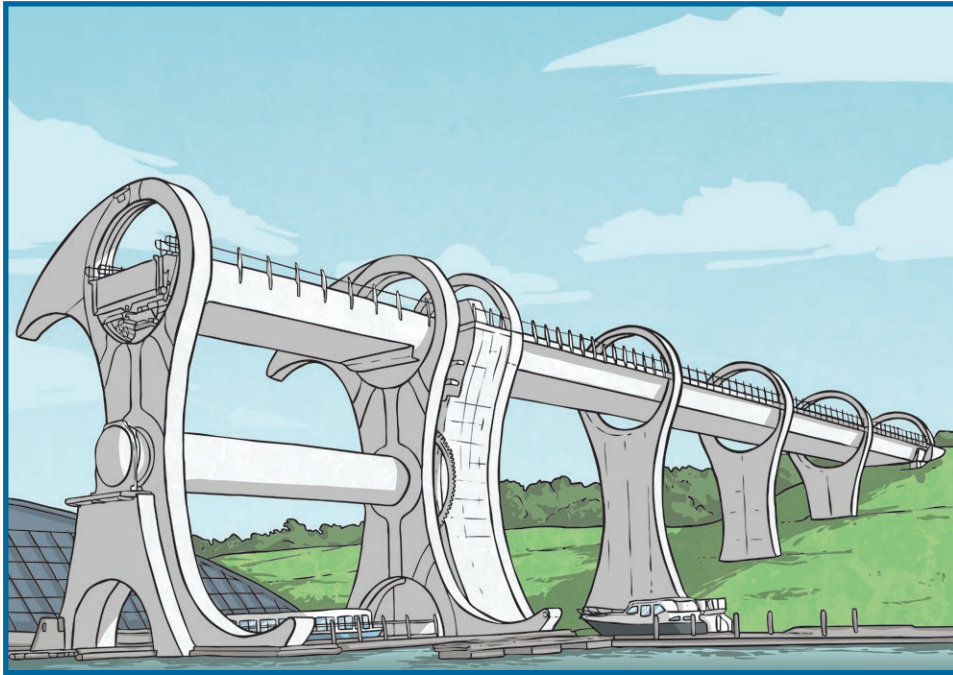
Weight:

300 tonnes each

Materials:

stainless steel

Falkirk Wheel



Location: Falkirk

Opened: 24th May 2002

Height: 35m

Weight: 1800 tonnes

Materials: steel

Forth Rail Bridge



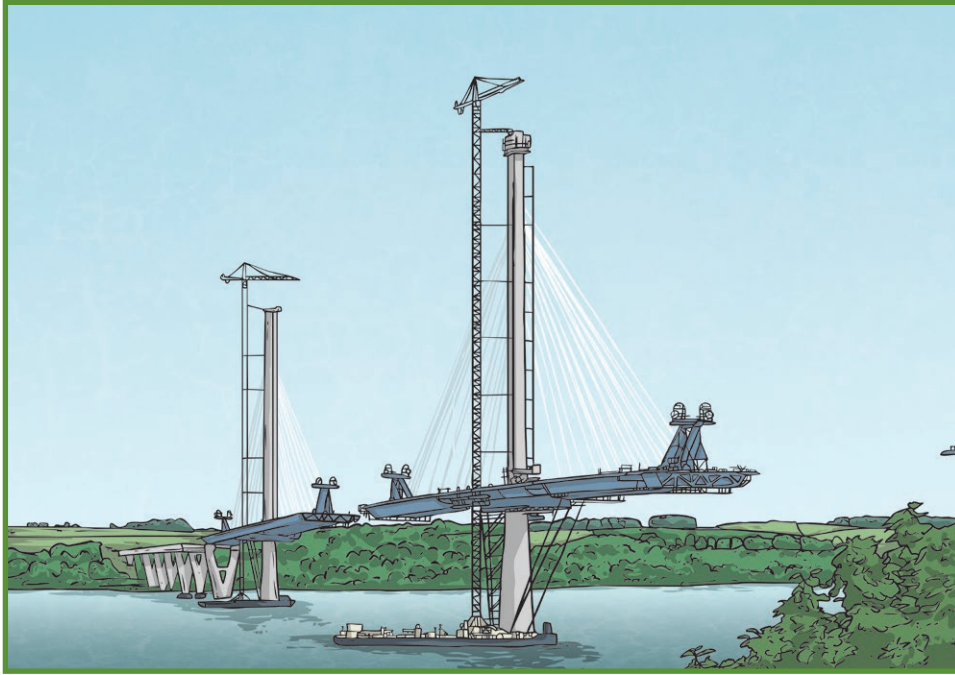
Location: Fife

Opened: 4th September 1964

Height: 150m

Materials: steel

Queensferry Crossing



Location: Fife

Opened: August 2017

Height: 207m

Materials: steel

RSS Discovery

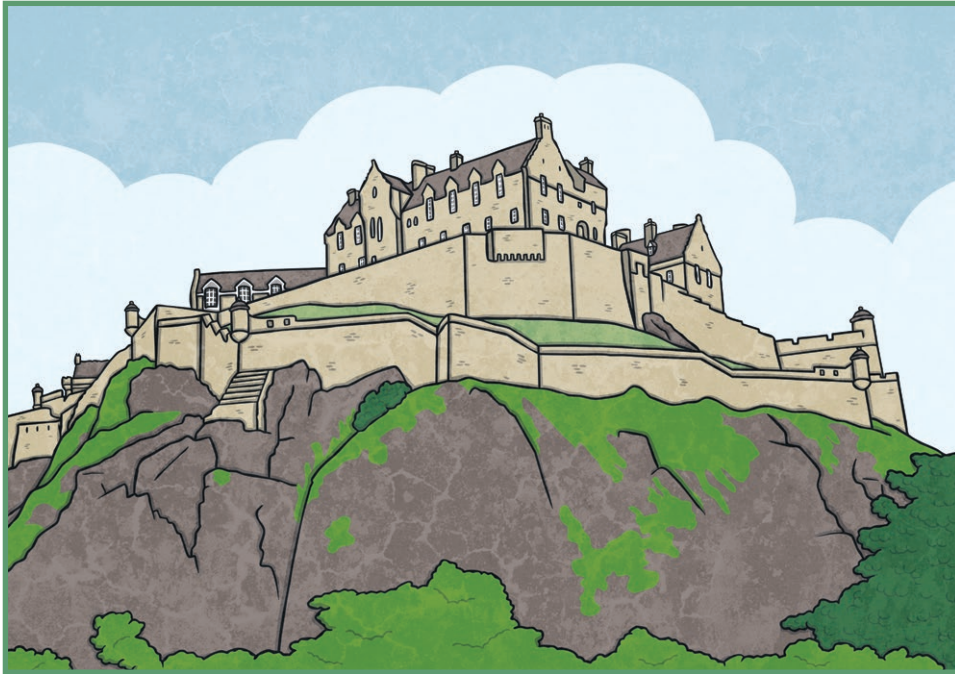


Location: Dundee

Length: 52m

Materials: wood

Edinburgh Castle



Location:

Edinburgh

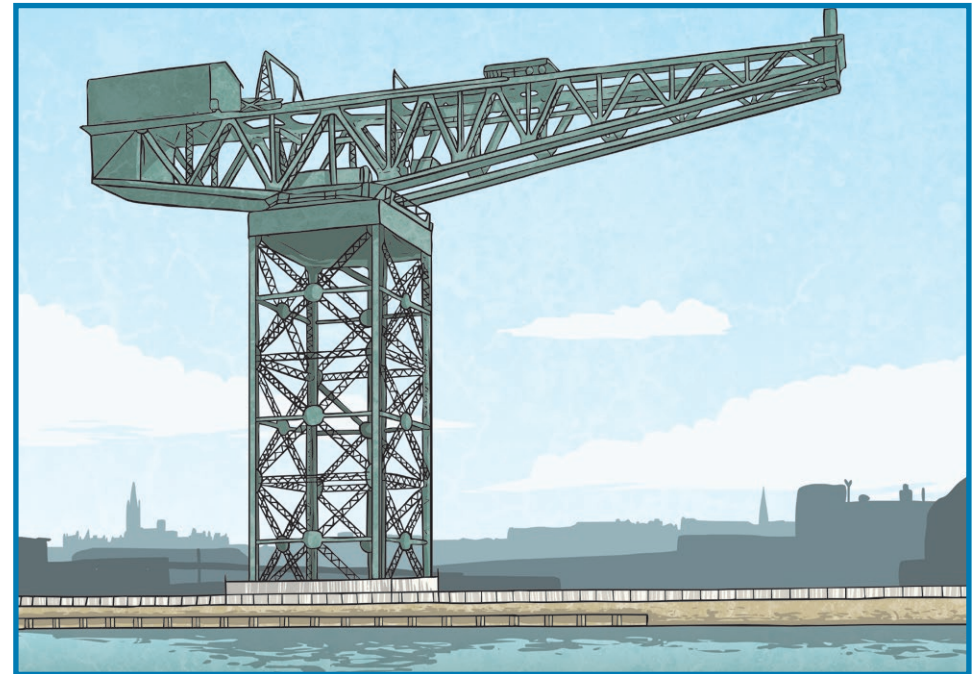
Built:

12th Century

Height:

120m (above sea level)

Finnieston Crane



Location:

Glasgow

Built:

1931

Height:

53m

Materials:

steel