

Electricity Fact Cards

twinkl

Electricity Fact Cards

twinkl

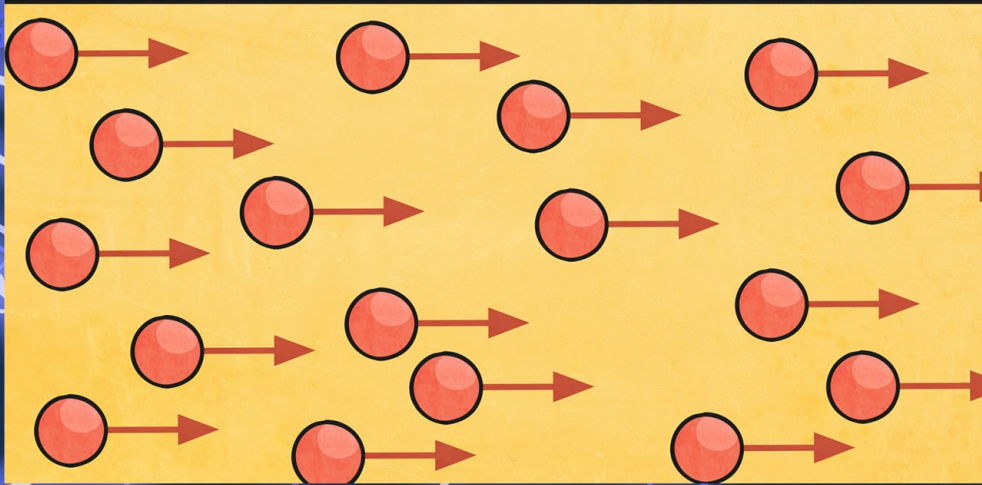
Electricity Fact Cards

twinkl

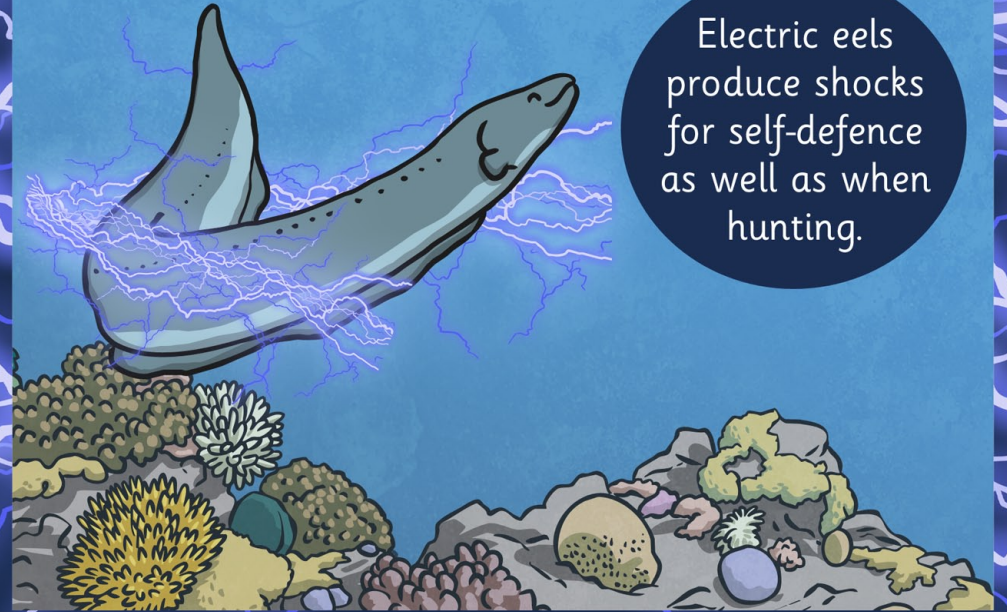
Electricity Fact Cards

twinkl

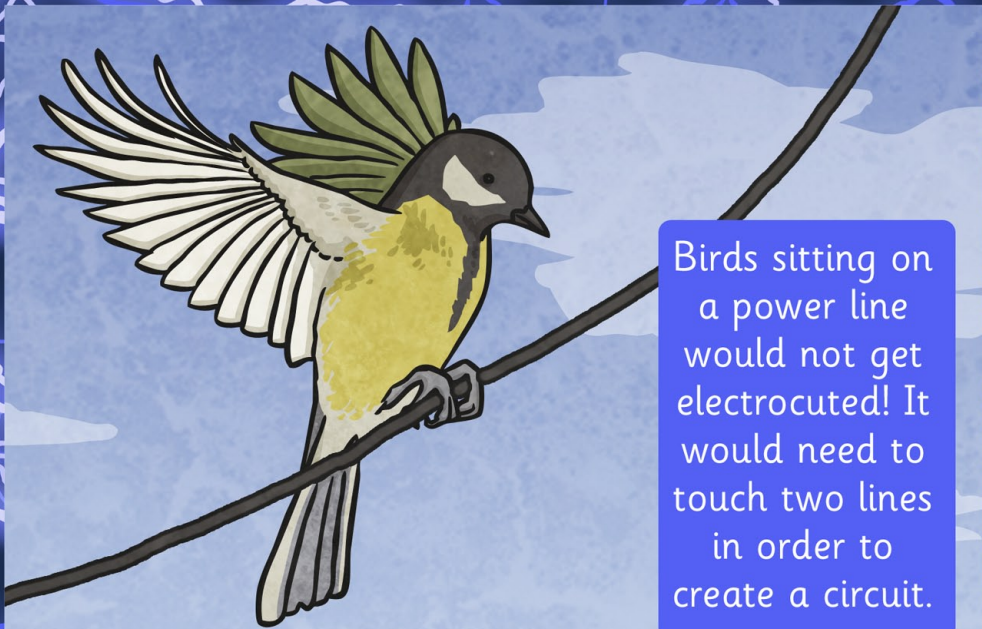
Electricity travels at the speed of light - more than 860 000 miles per second!



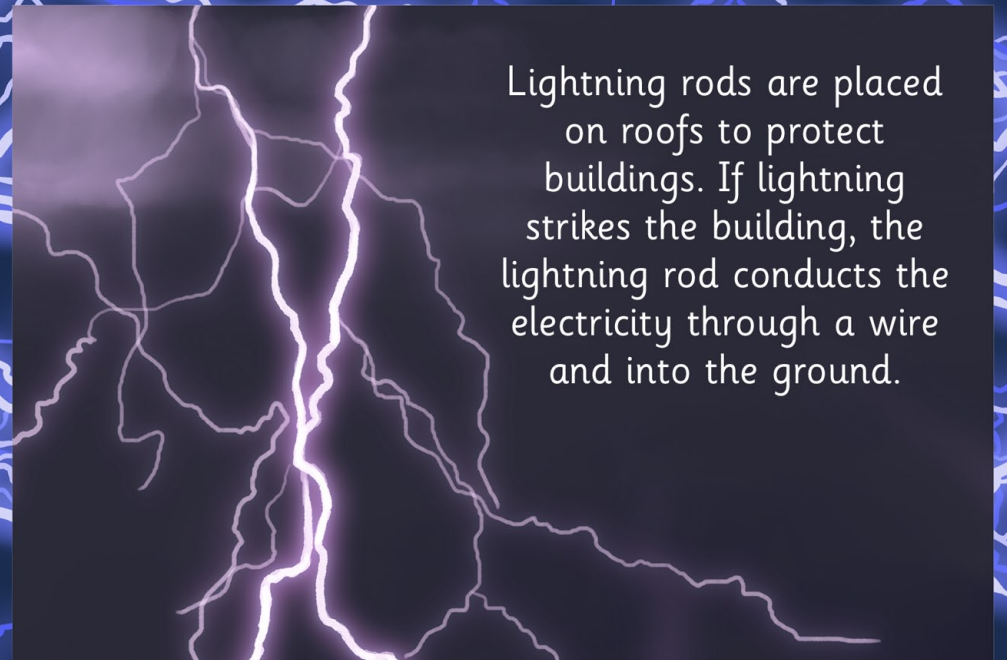
Electric eels produce shocks for self-defence as well as when hunting.



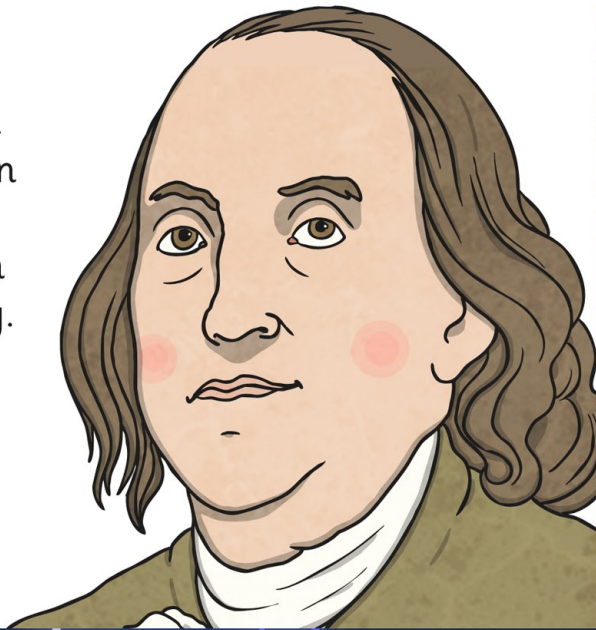
Birds sitting on a power line would not get electrocuted! It would need to touch two lines in order to create a circuit.



Lightning rods are placed on roofs to protect buildings. If lightning strikes the building, the lightning rod conducts the electricity through a wire and into the ground.



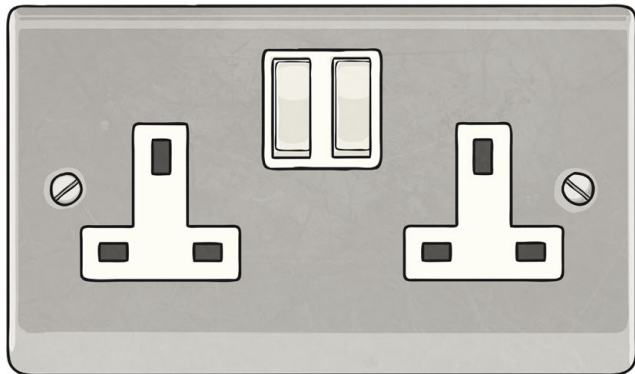
Benjamin Franklin was the first person to prove that lightning is a form of electrical energy.



Alessandro Volta developed the first electric battery.

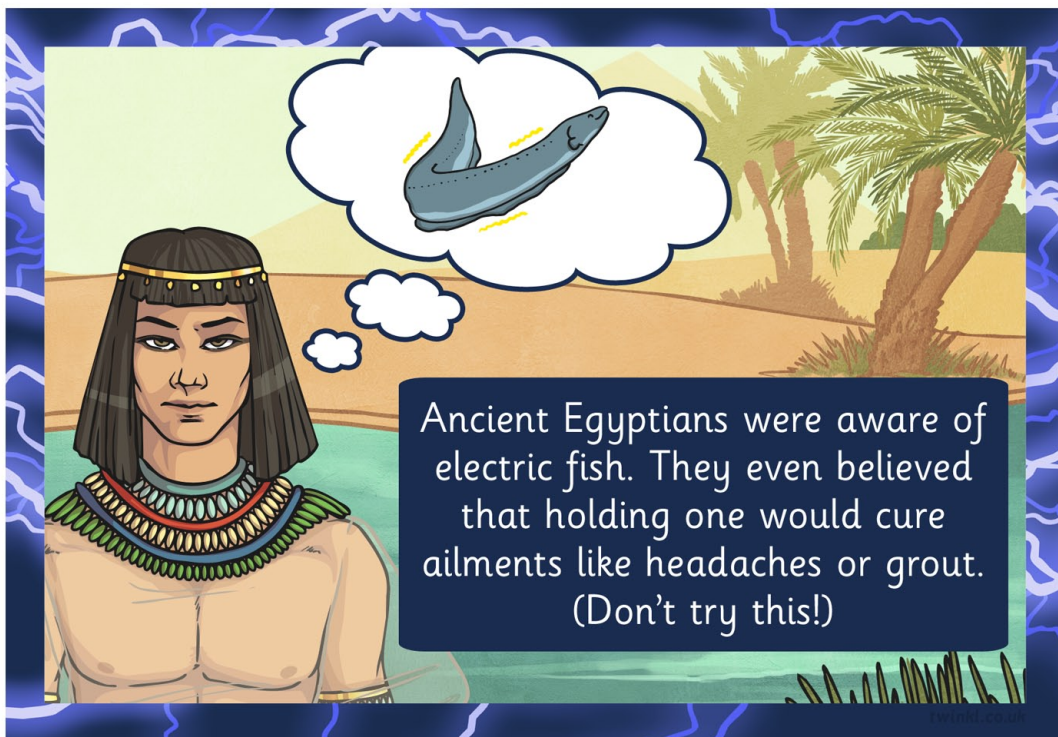


Thomas Edison invented more than 2000 products needed for us to use electricity in our homes, including switches and sockets!

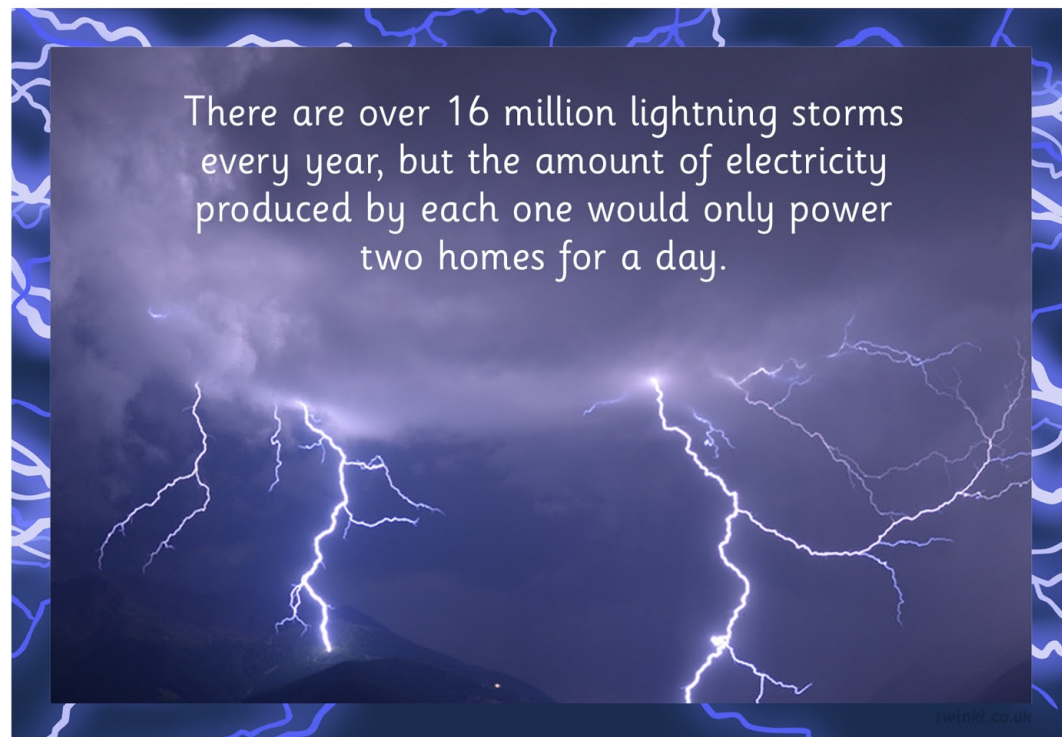


A typical gas power station can power 220,000 homes.





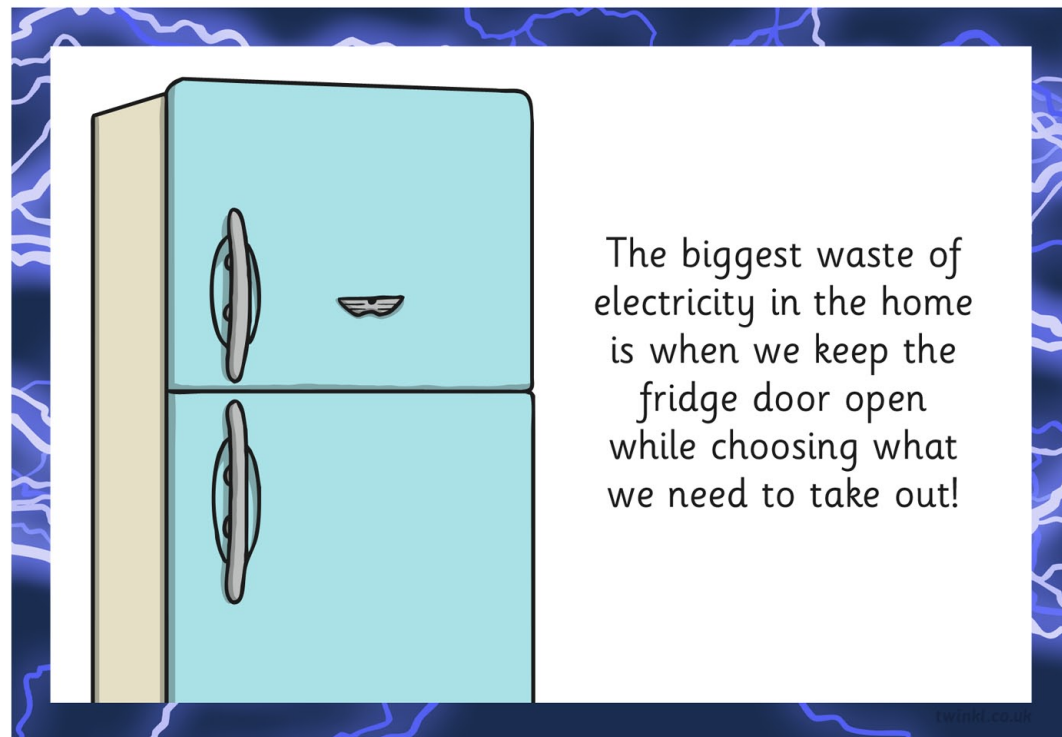
Ancient Egyptians were aware of electric fish. They even believed that holding one would cure ailments like headaches or grout. (Don't try this!)



There are over 16 million lightning storms every year, but the amount of electricity produced by each one would only power two homes for a day.



We tend to use more electricity in the kitchen than in any other room in our homes.



The biggest waste of electricity in the home is when we keep the fridge door open while choosing what we need to take out!