

Chapter 15



Exercise 1

- Which would hold more water, a bucket or a glass ?
- Put these in order, starting with the one which takes up the **least** space :-



- Lucy has an allergy. She takes **2 tablets, 3 times** a day.
 - How many tablets does she take each day ?
 - How many tablets would she take in a week ?



- The recipe shown makes **ten** cherry muffins.

- How much butter is used for 10 muffins ?
- What piece of cutlery is needed to measure out the sugar ?
- Amy needs to make **twenty** muffins.
How many cherries does she need ?
- Nick uses 6 eggs to make a batch of muffins.
How many muffins did Nick make ?
- How much syrup is needed for **30** muffins ?
- How many cups of flour are needed for a batch of 50 muffins ?

Recipe

for 10 cherry muffins

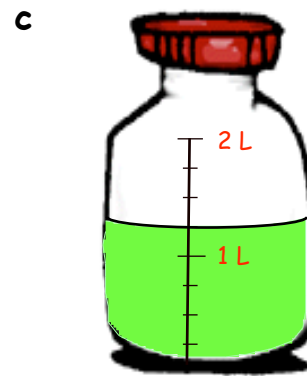
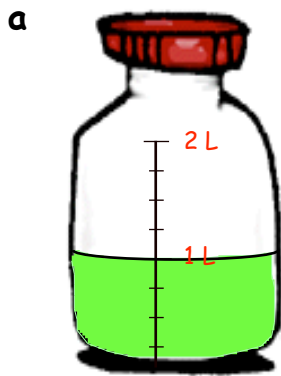
30 cherries (chopped)
Half Cup Water
3 Heaped Tablespoons Butter
1 Cup of Milk
6 Teaspoons Sugar
1 Teaspoon Salt
10 millilitres of golden syrup
3 Cups Self-raising Flour
2 eggs



Exercise 2



1. How many litres are in each bottle ?



2. From the list opposite, write down which items normally hold :-

- a more than a litre
- b less than a litre.

Bath	Thimble
Cup	Aquarium
Cola Can	Pond

3. Nick has a **two litre** bottle of cola.
He fills a **half litre** glass from the bottle.
How much cola is left in the bottle ?



Ben makes 6 litres of punch for a party.
After the party there is only **three quarters of a litre** left.
How much punch was drunk at the party ?

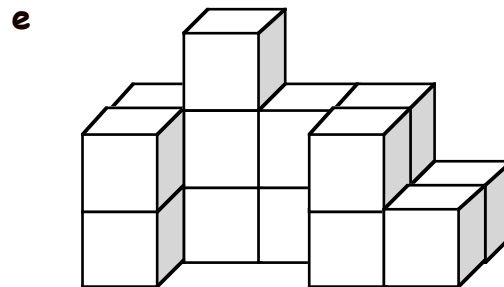
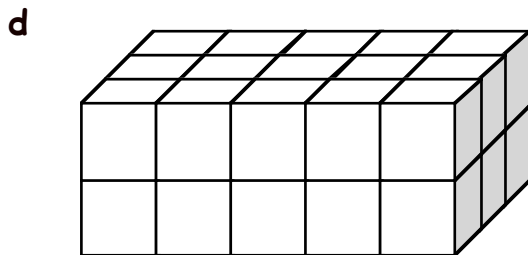
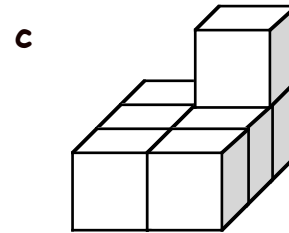
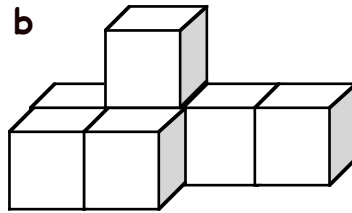
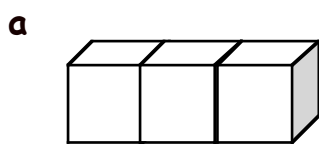
5. A glass holds a **quarter of a litre** of wine.
How many glasses can I pour from a bottle which holds :-

- a 1 litre
- b $\frac{3}{4}$ litre
- c $1\frac{1}{2}$ litres.



Exercise 3

1. Count the number of cubic centimetres in each shape below :-



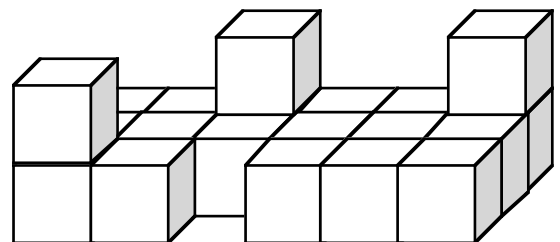
2. Look at question 1.

- a Which has the largest volume ?
- b Which has the smallest volume ?
- c Which shapes have the same volume ?
- d How many cubic centimetres would be needed altogether to build **ALL** the shapes in question 1 ?

3. Ben has 24 cubic centimetre bricks in a box.

Ben builds the shape shown.

How many bricks would be left over ?



Exercise 4

- 1. Which is heavier, a tea bag or a bag of sugar ?
- 2. List these in order of weight, starting with the lightest :-

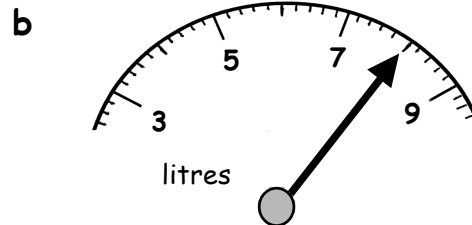
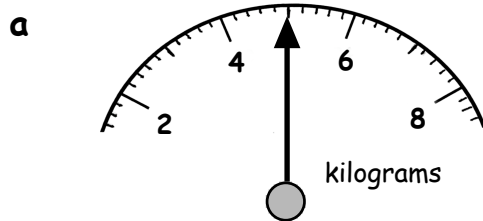
house, brick, pebble, garden slab

3. From the list, write down which items normally weigh :-

- a more than a kilogram
b less than a kilogram.

chocolate	truck
computer	watch
pebble	teacher

4. Write down the reading on each of these scales :-



Exercise 5

1. Write these weights in **grams** :- (remember 1 kg = 1000 g)

- | | | |
|--------------|-----------------|---------------|
| a 3 kg | b 6 kg | c 10 kg |
| d 5 kg 300 g | e 8 kg 25 g | f 1 kg 40 g |
| g 7 kg 8 g | h half kilogram | i 100 kg 10 g |

2. Write each in **kilograms** or **kilograms and grams** :-

- | | | | |
|----------|-----------|-----------|-----------|
| a 2000 g | b 7000 g | c 30000 g | d 5800 g |
| e 2050 g | f 20200 g | g 4550 g | h 11011 g |

3. Lucy has 3 boxes.
- one weighs 1200 grams
 - one weighs 1 kilogram 50 grams
 - the last one weighs half a kilogram.

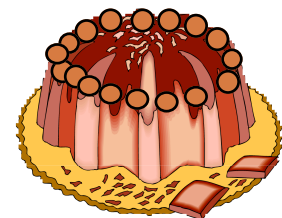
What is the total weight of the 3 boxes in grams ?

4. Mrs. Tee buys two and a half kilograms of sugar. She uses 800 g in a cake recipe.

How much sugar does she have left ?

5. A sack holds 20 kilograms of potatoes. A bag can hold 2 kg 500 g.

How many bags can I fill from the sack ?

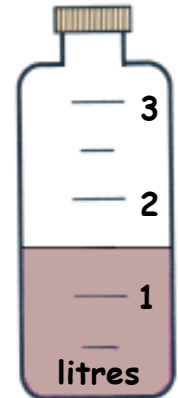


Revision Exercise

1. Put these in order, starting with the one which holds the most :-

mug, basin, pond, bottle

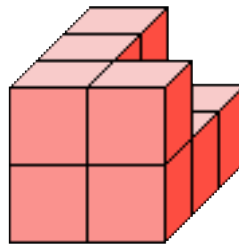
2. How many litres are in this bottle ? →



3. A half litre is poured out of a 4 litre bottle of juice.

How much juice is left in the bottle ?

4. How many cubic centimetre blocks are in the diagram shown ?



5. Write :-
- | | | | |
|---|--------------------|---|---------------------------------|
| a | 9 kg in grams | b | 1 kg 500 g in grams |
| c | 2 kg 20 g in grams | d | $\frac{1}{4}$ kilogram in grams |
| e | 3000 grams in kg | f | 10 300 grams in kg. |

6. A large bag of potatoes weighs 6 kg 250 g.
A medium bag weighs half a kilogram less.

How much does a medium bag weigh ?

