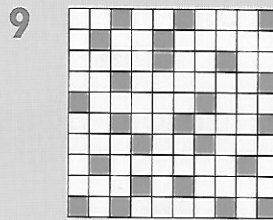
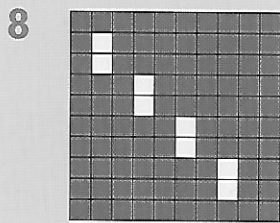
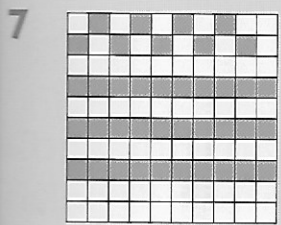
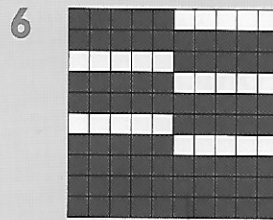
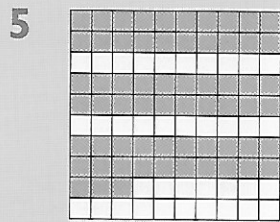
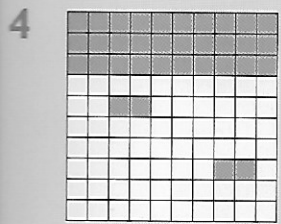
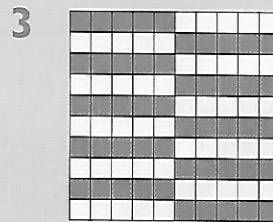
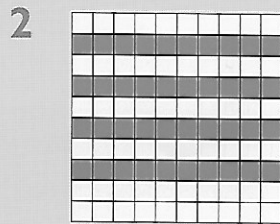
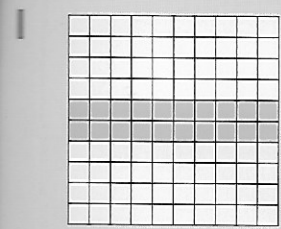


What fraction of each square is shaded? Is not shaded?



10 How many hundredths are there in a whole square?

11 How many hundredths are there in a half of the square?

What household items do you know that use hundredths?

Copy and complete,  
using the correct symbol.

12.  $\frac{20}{100} < \frac{40}{100}$

12  $\frac{20}{100}$    $\frac{40}{100}$

13  $\frac{63}{100}$    $\frac{34}{100}$

14  $\frac{24}{100}$    $\frac{20}{100}$

15 1 whole   $\frac{100}{100}$

16  $\frac{39}{100}$    $\frac{75}{100}$

17  $\frac{1}{2}$    $\frac{50}{100}$

I can identify hundredths of a shape and compare hundredths