

**LOUDOUN
ACADEMY** | *Learning together
Achieving together*

KINDNESS | DETERMINATION | EQUALITY

LOUDOUN ACADEMY

Learner Pathways for S5 and S6 next year

- Parent & Carer
Information Session
- **4th February 2025**



Introductions

Mr David Falconer Head
Teacher

Mr Bruce Hendry Depute
Head Teacher S3 & S5

Mrs Laura Brown Depute
Head Teacher (Acting) S1 &
S6

Mrs Lorraine Egerton Depute
Head Teacher S2 & S4

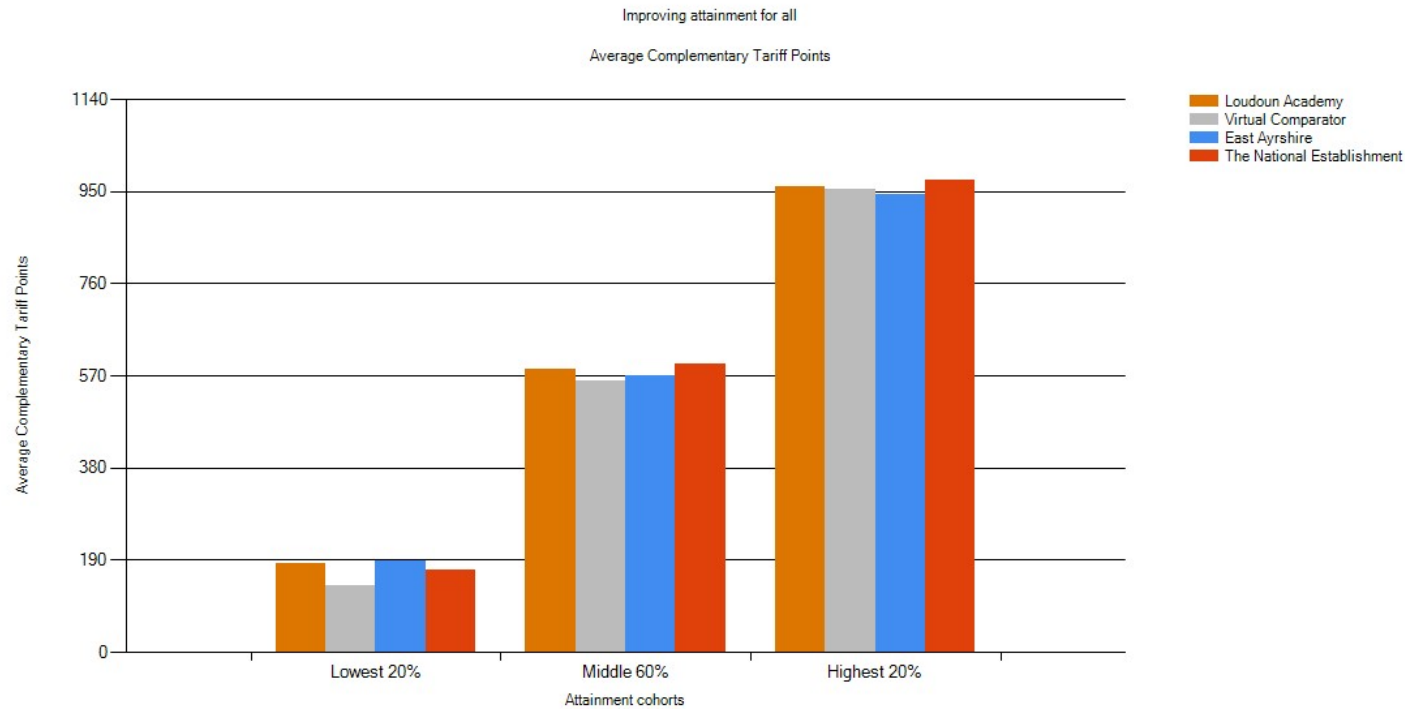
Ms Jennifer Robertson Skills
Development Scotland

Ms Ashley Husband Ayrshire
College Schools Link



ATTAINMENT – TARIFF VALUE

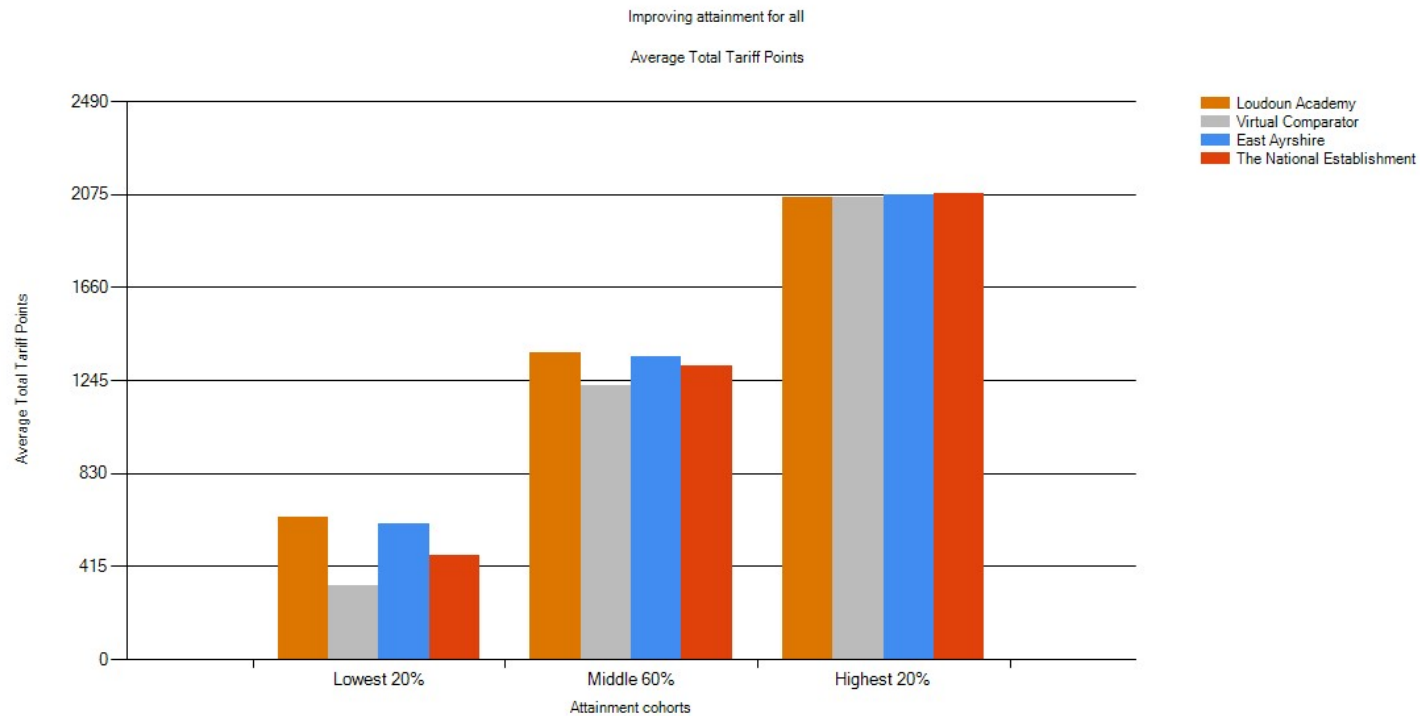
2024 S5 CUMULATIVE





ATTAINMENT – TARIFF VALUE

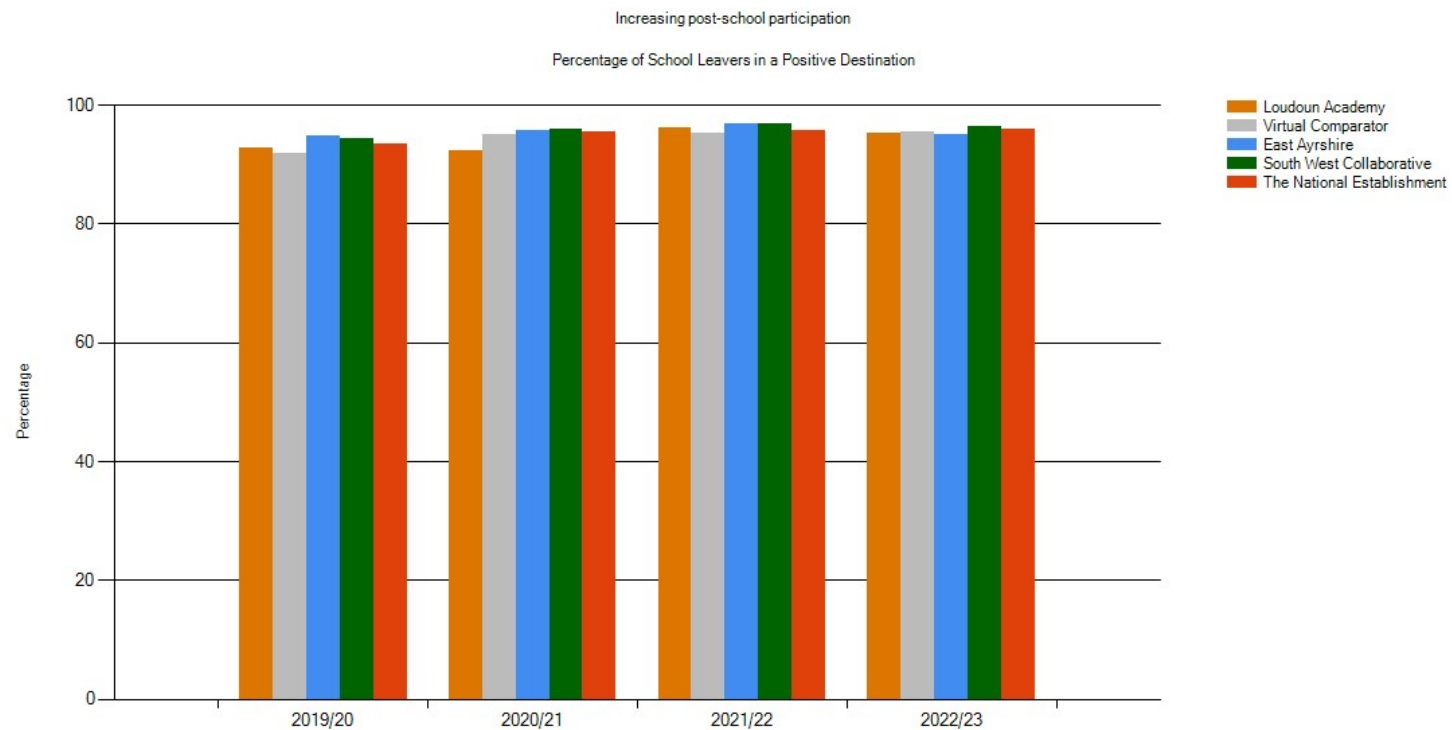
2024 S6 CUMULATIVE





POSITIVE POST-SCHOOL DESTINATION

2023 S4-6 LEAVERS





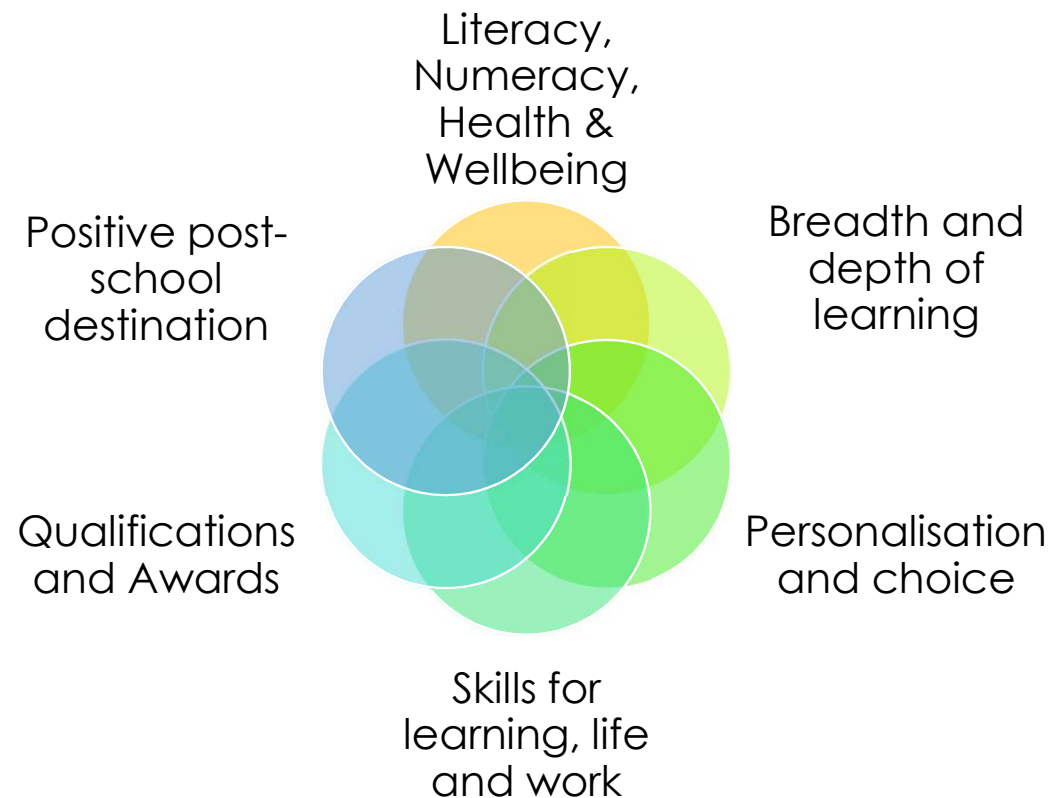
RETURNING TO S5/6

KEY CONSIDERATIONS

- Learner pathway – personalisation
- Maximising attainment
- Development of skills
- School Values
- Leadership Roles / School Involvement
- Planning for post-school destination



CURRICULUM PATHWAYS





WHAT'S INVOLVED

S5 and S6 Option Form and Booklet (School Website)
Personal, Social & Health Education, My World of Work

Curriculum Pathways Presentation
Assemblies & Parent Information Evening 4th February

S4 Full Reports – 17th February 2025
S5 Full Reports – 27th February 2025

Discuss – at home, PT Pupil Support interview
Link to Future Pathways information

Return signed paper copy w/c 27th February 2025
School college partnership applications by 8 Mar 2025



Curriculum for Excellence

Broad General Education (BGE): S1-S3

Senior Phase: S4-S6

S4: National Qualifications at levels 3, 4 & 5 / College Courses / Units / NPA'S

S5: New Higher Qualifications and National 5 / College Courses / NPA'S / NC's

S6: New Higher & Advanced Higher Qualifications / National 5 / College Courses / YASS



Progression Information Aug 2024

Subject N5	Subject Higher	Grade	A	B	C	D	NA	
English	English	A	48%	30%	16%	5%	1%	100%
English	English	B	7%	23%	34%	26%	9%	100%
English	English	C	1%	7%	21%	37%	33%	100%
English	English	D	1%	4%	12%	29%	54%	100%
English	English	No Award	0%	13%	20%	7%	60%	100%
Mathematics	Mathematics	A	66%	19%	9%	4%	3%	100%
Mathematics	Mathematics	B	15%	21%	22%	18%	24%	100%
Mathematics	Mathematics	C	4%	11%	15%	21%	48%	100%
Mathematics	Mathematics	D	2%	7%	10%	20%	62%	100%
Mathematics	Mathematics	No Award	0%	7%	7%	13%	73%	100%
Business Management	Business Management	A	70%	20%	8%	1%	[low]	100%
Business Management	Business Management	B	23%	33%	29%	12%	4%	100%
Business Management	Business Management	C	6%	16%	32%	30%	16%	100%
Business Management	Business Management	D	2%	8%	20%	30%	39%	100%
Business Management	Business Management	No Award	5%	0%	20%	10%	65%	100%



S5 / 6 CURRICULUM

National 5 – assignment and final exam
SCQF Level 5 – unit assessments and assignments
Higher – assignment and final exam
Adv. Higher – assignment and final exam



Linked to longer term plan

Attainment in S5 and S6 – National/Level 5/Higher

Requirements for entry into:

- College
- University
- Apprenticeship
- Employment

16+

**Post school planning is
captured as part of the
Option Choice process**

Core subjects

Physical Education

Personal & Social Education

Ideally From S4 Subjects

Choice 1

Choice 2

Choice 3

Choice 4

Choice 5

Process

S5 Option Form

16+ Info



LOUDOUN ACADEMY | *Learning together
Achieving together*

KINDNESS | DETERMINATION | EQUALITY

Pupil Name  **LOUDOUN ACADEMY** | *Learning together
Achieving together*
KINDNESS | DETERMINATION | EQUALITY

Sex Class

Loudoun Academy S5 Options Form 2025

Course Title	Levels Available*	Rank order 1-5 & Level
Administration & IT	National 5, Higher	
Applications of Mathematics	National 5	
Art & Design	National 5, Higher	
Biology	National 5, Higher	
Business Management	National 5, Higher	
Chemistry	National 5, Higher	
College	Course Title :	
Computing Science	Higher	
Creative Industries through Photography	National 5	
Cyber Security	NPA Level 5 & Level 6	
Design & Manufacture	Higher	
English	National 5, Higher	
Foundation Apprenticeship Food & Drink Tech	Level 6	
French	National 5, Higher	
Geography	National 5, Higher	
Graphic Communication	Higher	
Health Sector	National 5	
History	National 5, Higher	
Mathematics	National 5, Higher	
Modern Studies	National 5, Higher	
Music	National 5, Higher	
Physics	National 5, Higher	
Physical Education	National 5, Higher	
Practical Fashion & Textile	National 5, Higher	
Practical Metalwork	National 5	
R/MPS	National 5, Higher	
Scottish Studies	Level 5, Level 6	
Travel & Tourism	National 5	
COMPULSARY CORE: FSE 1 Period & Two Periods of PE		
Career		
Aspiration :		
Destination (Please tick how you plan to meet your career aspiration)		
Employment	<input type="checkbox"/> Training Apprenticeship	<input type="checkbox"/> College <input type="checkbox"/> Higher Education (University) <input type="checkbox"/>
Leaving Point (Please tick when you are planning to leave school)		
End of S4	<input type="checkbox"/> Christmas S5	<input type="checkbox"/> S5 <input type="checkbox"/> S6 <input type="checkbox"/>



Process

S6 Option Form

Loudoun Academy S6 Options Form 2025

Course Title	Levels Available*	Rank order 1-5 & Level
Administration & IT	National 5 & Higher	
Applications of Mathematics	National 5	
Art & Design	National 5, Higher & Advanced Higher	
Biology	National 5, Higher & Advanced Higher	
Business Management	National 5, Higher & Advanced Higher	
Chemistry	National 5, Higher & Advanced Higher	
College	Course Title :	
Computing Science	Higher	
Creative Industries through Photography	National 5	
Cyber Security	NPA Level 5 & Level 6	
Design & Manufacture	Higher & Advanced Higher	
English	National 5, Higher & Advanced Higher	
Foundation Apprenticeship Food & Drink Tech	Level 6	
French	National 5, Higher & Advanced Higher	
Geography	National 5 & Higher	
Graphic Communication	Higher & Advanced Higher	
Health Sector	National 5	
History	National 5, Higher & Advanced Higher	
Hospitality: Barista/Mixology/Counter Service	S4 Only Foundation Apprenticeship L5	
Leadership Award & Short Course Bundle	S4 Only Level 6	
Mathematics	National 5, Higher & Advanced Higher	
Modern Studies	National 5, Higher & Advanced Higher	
Music	National 5, Higher & Advanced Higher	
Personal Development using Sport & Recreation	Level 6	
Physics	National 5, Higher & Advanced Higher	
Physical Education	National 5, Higher & Advanced Higher	
Practical Fashion & Textile	National 5 & Higher	
Practical Metalwork	National 5	
R/VPs	National 5 & Higher	
Scottish Studies	Level 5, Level 6	
Travel & Tourism	National 5	
YASS	Level 7 Course Title:	
COMPULSORY CORE: PSE 1 period & two periods of PE		
Career Aspiration :		
Destination (Please tick how you plan to meet your career aspiration)		
Employment	<input type="checkbox"/>	Training Apprenticeship <input type="checkbox"/>
College	<input type="checkbox"/>	Higher Education (University) <input type="checkbox"/>
Leaving Point (Please tick when you are planning to leave school)		
End of S4	<input type="checkbox"/>	Christmas S5 <input type="checkbox"/>
S5	<input type="checkbox"/>	S6 <input type="checkbox"/>

16+ Info



**LOUDOUN
ACADEMY** | *Learning together
Achieving together*

KINDNESS | DETERMINATION | EQUALITY

Foundation Apprenticeship

L5 Foundation Apprenticeship in Hospitality

Introduced in session 2022/23

Runs in conjunction with Barista Skills over 1 column.

Taught by Loudoun Academy and Ayrshire College Staff

Pupils will study in school and cover the following

Skills for Working in the Hospitality Industry

Introduction to Events

Skills for working in the Professional Kitchen

Front of House Operations

Work based Challenge Unit



Foundation Apprenticeship

L6 Foundation Apprenticeship in Food and Drink Technology

Introduced in session 2019/20

Runs over 2 columns, Taught by Loudoun Academy and external partners - SVQ

Pupils will study in school and cover the following:

- Product Development
- Food and Drink Science
- Nutrition
- Technology and Manufacturing
- Design and Marketing

Skills and Attributes:

- Good communication skills
- Team working skills
- Ability to think creatively
- Problem solving

**APPLYING FOR
SCHOOL COLLEGE
COURSE**

Ayrshire College

Three main campuses



Kilmarnock Entrance Area



What is a School College course and what are the benefits

- Access to studying curriculum areas and courses not available in school.
- Access to college resources and specialised equipment eg Engineering, Construciton, Creative, Hospitality
- Meet students from other schools with same interests
- Access to support departments within the College ie Student Association, Student Experience team, Funding and Learning Resource Centre
- Learn about progression opportunities and pathways into employment
- Learning in an adult environment
- Soft transition from school to college or university

RAISING ASPIRATIONS

INSPIRING ACHIEVEMENT

INCREASING OPPORTUNITIES

College Provision

- Courses start in June and finish at the end of April
- Tue/Thu
2:00 – 4:00 or 2:00 – 5:00
- Attendance may be required during exam leave in May
- Travel to and from college is organised through school
- College will work collaboratively with schools to support pupils with additional learning needs



Attendance and Progress

- Attendance policy and letters agreed with schools.
- Absence is communicated to school daily by 2.45 pm.
- Weekly attendance report sent to schools.
- Progress and attendance meetings held with school contact monthly.
- Tracking reports issued to schools and parents in December and March.

RAISING ASPIRATIONS

INSPIRING ACHIEVEMENT

INCREASING OPPORTUNITIES

Courses 2025 - 26

Level 4

- Steps to Work Award: Hair & Beauty
- Skills for Work Early Education and Childcare
- Introduction to the Construction Industry
- Skills for Work: Uniformed Services
- NPA Professional Cookery
- Skills for Work: Automotive
- NPA Software Development
- SVQ Level 1 Performing Engineering Operations



Courses 2025 - 26

Level 5

- Skills for Work: Early Education & Childcare
- Skills for Work: Renewable Energy – **Kilwinning Campus and Ayr Campus**
- NPA Hospitality
- NPA Digital Media with Film Making – **Ayr Campus**
- SVQ 2 Performing Engineering Operations (infill to Full time)
- Mental Health & Wellbeing Award
- NPA Sport & Fitness (Football)



Courses 2025 - 26

Level 6

- Art Portfolio & Print Making (including life drawing) - **Ayr Campus**
- NPA Criminology - **Kilwinning and Ayr Campus**
- NPA Psychology
- NPA Acting & Performance - **Ayr Campus**
- NPA Production Arts - **Ayr Campus**
- NPA Children & Young People - **Kilwinning and Ayr Campus**
- NPA Software Development
- NPA Sound Production - **Ayr Campus**
- NC Oral Health Care (infill to Full Time – **Kilwinning Campus**)
- Foundation Apprenticeship Electrical Engineering - **Kilwinning Campus**
- Foundation Apprenticeship Aeronautical Engineering - **Ayr Campus**

RAISING ASPIRATIONS

INSPIRING ACHIEVEMENT

INCREASING OPPORTUNITIES

WHAT IS A FOUNDATION APPRENTICESHIP?

- Two year level 6 Apprenticeship which is completed through S5 and S6 as part of your school timetable
- Courses run on a Tues/Thurs from 2:00-5:00
- It is the same level as a higher qualification and recognised by employers, colleges & universities
- You will gain an industry recognised qualification as well as your school qualifications
- Gain work experience with an employer
- Get a head start in your career
- Boost your CV or application for college or university



RAISING ASPIRATIONS
INSPIRING ACHIEVEMENT
INCREASING OPPORTUNITIES

Courses 2025 - 26
**Level 7 HNC (infill
to Full time)**

- HNC Applied Sciences
- HNC Architecture with Sustainability – **Ayr Campus**
- HNC Cyber Security – **Kilwinning Campus**
- HNC Electrical Engineering - **Kilwinning Campus**
- HNC Mechatronics - **Kilwinning Campus**
- HNC Hospitality and Operations - **Kilwinning Campus**
- HNC Sports Coaching & Development

RAISING ASPIRATIONS

INSPIRING ACHIEVEMENT

INCREASING OPPORTUNITIES

WHAT IS AN HNC (infill) ?

- A Full Time course which pupils can infill to as part of their school timetable
- It is the same level of learning as an Advanced Higher
- You will attend college two full days per week alongside your other school subjects
- There is no end of year exam as assessments are ongoing throughout the year.
- You will be required to complete a Graded Unit which is project based and is graded according to your knowledge and skills.
- If completed successfully this will gain you entry to an HND College Course and possible University (depending on entry requirements).

RAISING ASPIRATIONS

INSPIRING ACHIEVEMENT

INCREASING OPPORTUNITIES

Entry requirements

- Level 4 – no formal qualifications
- Level 5 – 4 or 5 National 4 qualifications
- Level 6 – 4 or 5 National 5 qualifications
- Level 7 – 1 or 2 Higher Qualifications

RAISING ASPIRATIONS

INSPIRING ACHIEVEMENT

INCREASING OPPORTUNITIES

What's next?

- Applications for School-College Courses are open now and close on the 26th of March
- You should discuss with your Guidance Teacher before making your application
- Each course has a different selection process which you will be informed about after you make an application
- Interviews take place 22nd – 25th April.
- Interviews outcomes – places confirmed to schools and pupils 30th April.
- June start date 9th June.
- August start date 21st August.
- HNC start date 25th August.

RAISING ASPIRATIONS

INSPIRING ACHIEVEMENT

INCREASING OPPORTUNITIES

Guide on Applying for your course

- [Our website - www.ayrshire.ac.uk](http://www.ayrshire.ac.uk)
- You can make a total of 3 applications
- Make sure you meet or are on track to meet the entry requirements
- Take special care in writing your personal statement to support your application
- Take a note of the email address and password you use to apply

RAISING ASPIRATIONS

INSPIRING ACHIEVEMENT

INCREASING OPPORTUNITIES

Questions?

If you have any questions, please don't hesitate to get in touch using the contact details below -

Ashley Husband
School College Partnership Officer (East
Ayrshire)
Ayrshire College

Tel: 07526566296

Email: Ashley.husband@ayrshire.ac.uk

RAISING ASPIRATIONS

INSPIRING ACHIEVEMENT

INCREASING OPPORTUNITIES



**Skills
Development
Scotland**

Option Choices & Pathways Information Evening

**Jennifer Robertson
Careers Adviser
Loudoun Academy**



Support and conversations we have in school

SDS careers advisers might speak to your young person about:



Finding out about their self, strengths and skills



Routes into careers including apprenticeships



Making decisions such as option choices



Building and developing networks



Different types of careers and how to research them



Help with creating CVs



Developing the types of skills that are useful in a job



Making applications and applying for courses

The World of Work is changing

Jobs exist today which didn't even exist five years ago, and this will continue to be the case.

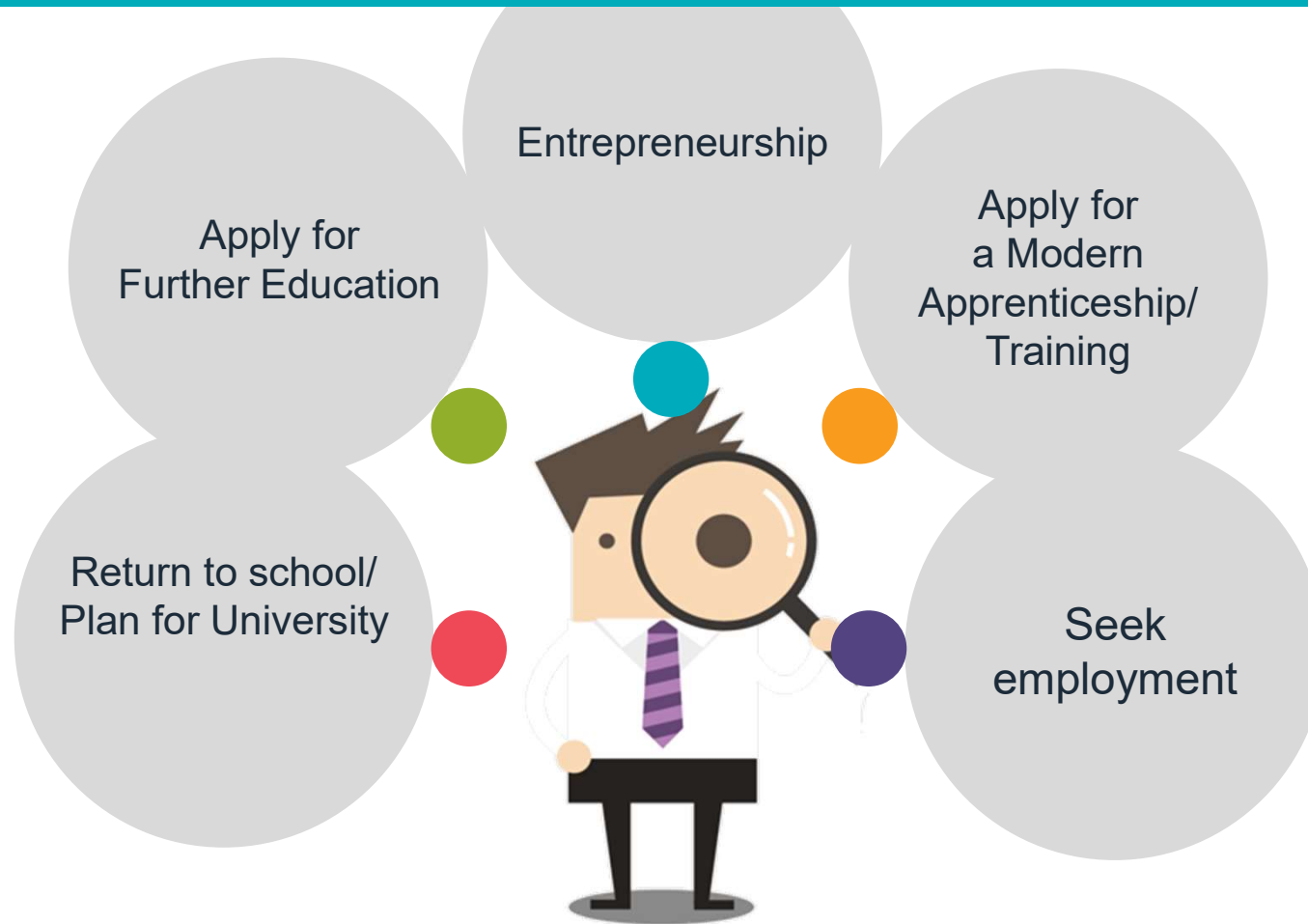
What is important is that your young person is able to use their career management skills and find the right career path for them.



Career Management Skills



Routes & Pathways



College

Wide variety of courses

Vocational/work focus

Entrance requirements vary depending on level of course:

HND Higher National Diploma 2 Highers or HNC

HNC Higher National Certificate 1-2 Highers or NC/NQ

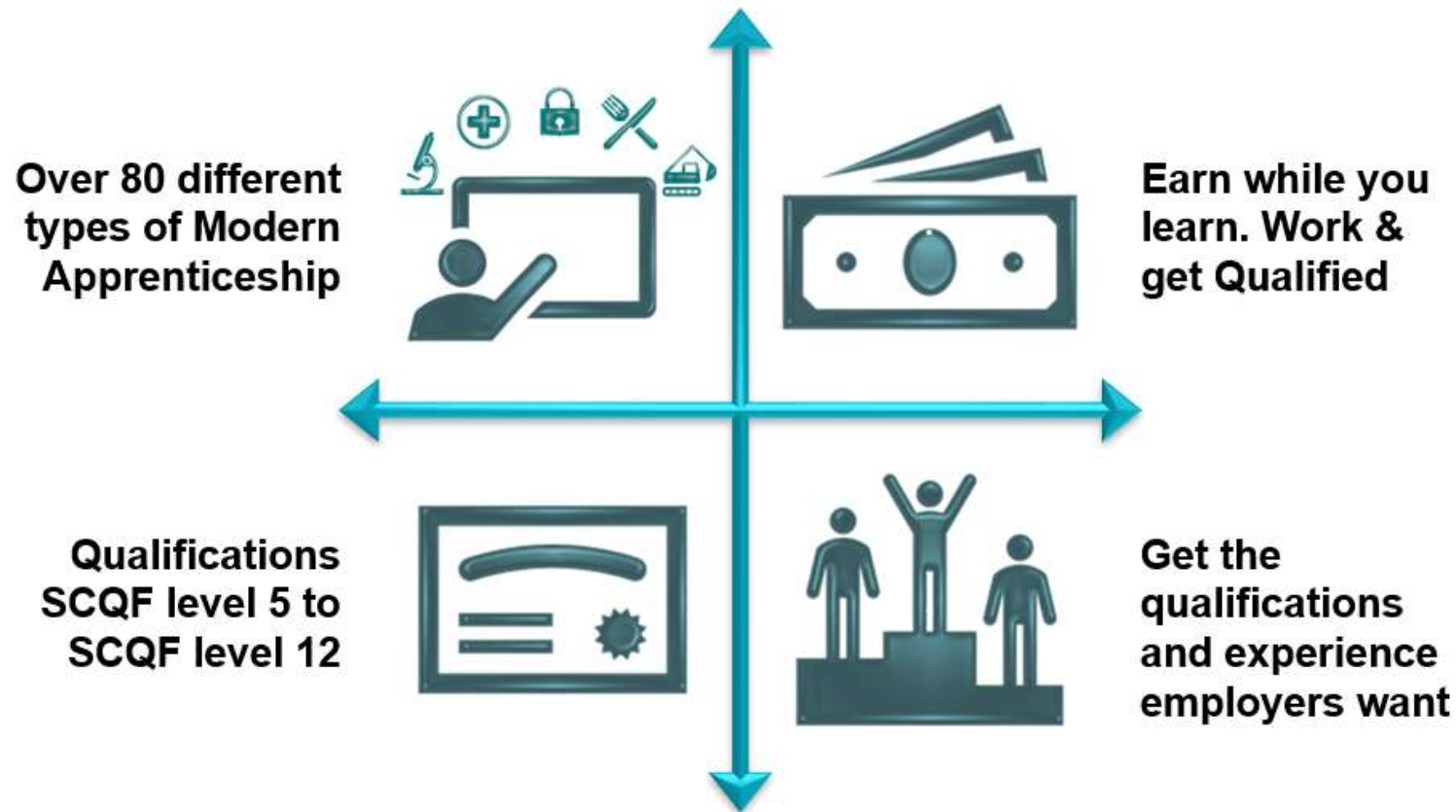
NC/NQ National Certificate/National Qualification
National 4 or 5

Apply directly to colleges from **December/January** – online through individual college websites

University

- Degree – at **LEAST** 4 Highers or HNC/HND – check individual university websites for detailed information
- Vocational or interest-based course
- Evidence of motivation & relevant work experience
- Be aware of admissions tests - UCAT (Medicine/Dentistry) and LNAT (LLB Law at University of Glasgow)
- Aim high, be aspirational but also realistic with course choices
- If in any doubt about achieving grades, consider college as a back-up

APPRENTICESHIP PATHWAYS



Apprenticeship Family



FA

Foundation Apprenticeships

If you're still in school, you can do a Foundation apprenticeship in S5 or S6. You'll learn about the world of work and you'll come out with an industry recognised qualification.



MA

Modern Apprenticeships

You'll learn on the job in a Modern Apprenticeship. You'll just be like any other employee, but you'll also be working towards a qualification.

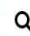


GA

Graduate Apprenticeships

Similar to a Modern Apprenticeship, you'll be an employee. But you'll be spending some of your time at university, working towards a degree and earning a wage at the same time.

Find an apprenticeship vacancy

 Keywords

 Postcode or town

Search

Apprentices

Kick-start your career with an apprenticeship

Explore the apprenticeships available, which employers you could work with and the qualifications you'll gain along the way.

Employers

Grow your business with an apprentice

We'll help you find the right fit for your organisation and support you with the costs. You'll also get the opportunity to help us develop our apprenticeships.

Live chat



Say hello to a wide world of career choices

Explore roles, develop your skills and get the right job for you.



Parents and carers

You're a big influencer in your child's life – use our advice and tools to empower them, whatever stage they're at.

Here are some ways you can **support your child**



Start with a career conversation

Discover how My World of Work can help you chat to your child about their career.

[View article →](#)



Look after your child's mental health

A helping hand with your child's wellbeing. Find free helplines and expert online guidance.

[View article →](#)



Additional support for you and your child

Find sources of help and advice for parents, carers and anyone who needs additional support.

[View article →](#)



How to help your child get work experience

Discover how you can support your child get a taste of the working world.

[View article →](#)



A guide to Option Choices

Help your child get career inspiration. Show them where the subjects they do could take them.

[View article →](#)



Support your child as they leave school

Read top tips on how you can help and use our handy resources.

[View article →](#)

Welcome to your strengths report

Use this report to learn what you're good at and discover how your strengths could help you at work.


Strengths you use often

These are strengths you use regularly - they come naturally to you. Choose each strength to find out what it means.

- Resilience** [More info](#)
- Responsible** [More info](#)
- Decision Maker** [More info](#)
- Supportive** [More info](#)
- Moral Compass** [More info](#)

Unleash your personality with Animal Me!

Take our personality quiz and learn about the things you're good at and jobs which may suit you. It only takes a few minutes. At the end, you'll find out which of our animal friends is most like you!



[Try Animal Me](#)

About Animal Me

Animal Me is based on the most popular personality test in the world.

- Complete our short multiple choice questions.
- You'll get a report to help you understand what you're good at - and how to become better.
- Learn which type you work with others and which jobs may suit you.

[Play video](#)

Our Animal Me personality quiz was developed by My World of Work partner, Career Design.

Achievements Library

[All achievements](#) [Best of board](#)

All achievements

- Completed Harry Potter Lego ship** [View achievement](#)
- Completed Guitar Tutorial** [View achievement](#)
- Completed my LMI project for school** [View achievement](#)

Viewing 13 of 2 results

< 1 >

Date for your diary!

Wednesday 19th February

Ayrshire College (Kilmarnock Campus)

Pathways to Careers Event 5.30 -7.30pm

<https://www.ticketsource.co.uk/developing-the-young-workforce-ayrshire/pathways-to-careers/2025-02-19/17:30/t-yaxqepo>



Get in touch!

Jennifer Robertson
Careers Adviser

Contact me on:

In school Monday - Friday
Office, 1st floor next to
Maths base

Drop in over interval and
lunch

Speak to Guidance

Teacher



www.myworldofwork.co.uk



07827083301



Jennifer.robertson2
@sds.co.uk



RETURNING TO S5/6

KEY CONSIDERATIONS

- Forms must be returned to Principal Teachers of Pupil Support / Communication Centre by 27th February 2025
- This follows research, discussion at home and in school, and planning
- Forms must be signed by a parent or carer



**LOUDOUN
ACADEMY** | *Learning together
Achieving together*

KINDNESS | DETERMINATION | EQUALITY

Questions