



# OUTDOOR LEARNING

# UNDERGROUND

**RISK DISCUSSION  
MATERIALS:  
PENCIL/PAPER/CLIPBOARDS  
/CHALK/BALL OF WOOL**



**15 min - 2 hours**

## WARM UP



**Divide into groups**  
Each group has 1 minute to list as many things that lives underground,  
**Get feedback, now its time to draw**

## DRAWING

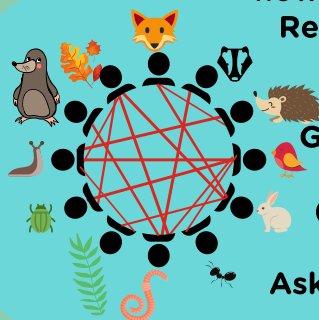


Groups are to choose 1 of those underground creatures to be their group name but it must be a secret from the other groups. Think carefully so you aren't the same as the other groups.

Think of describing this creature - then each group will get turns to describe their creature whilst the other teams draw it (no shouting out) finally they show off their drawings and see if they guessed right

## FOOD CHAIN

Why do these creatures lives underground? Using the team names can you create a food chain or web showing how everything relies on everything else? Remember you can add in extra things like plants / birds etc

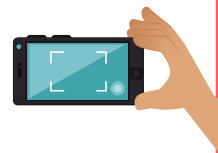


Give them string and make the food chain  
(information sheet has an example diagram)

Ask the following questions and see the impacts and the string is pulled  
What happens when there is no water?  
What if pesticides are used killing? Plants get a disease and die? Climate Change? Plants get disease or die due to drought, "plants" pulls the string hard. Gardeners kill the slugs. Discuss what this means to a sensitive ecosystem which relies on everything else.

## ASSESSMENT

Questions  
Photograph activity  
Record findings  
Comments of students





## NATURE DEBATE

Are the schools grounds a good place for nature?

Why?

How can they be improved?

Think of creating a poster



## SHAPES

Using the children get them to make shapes in their group

1. A circle
2. An oval
3. A D shape

Can they match the hole and animal:

Badger

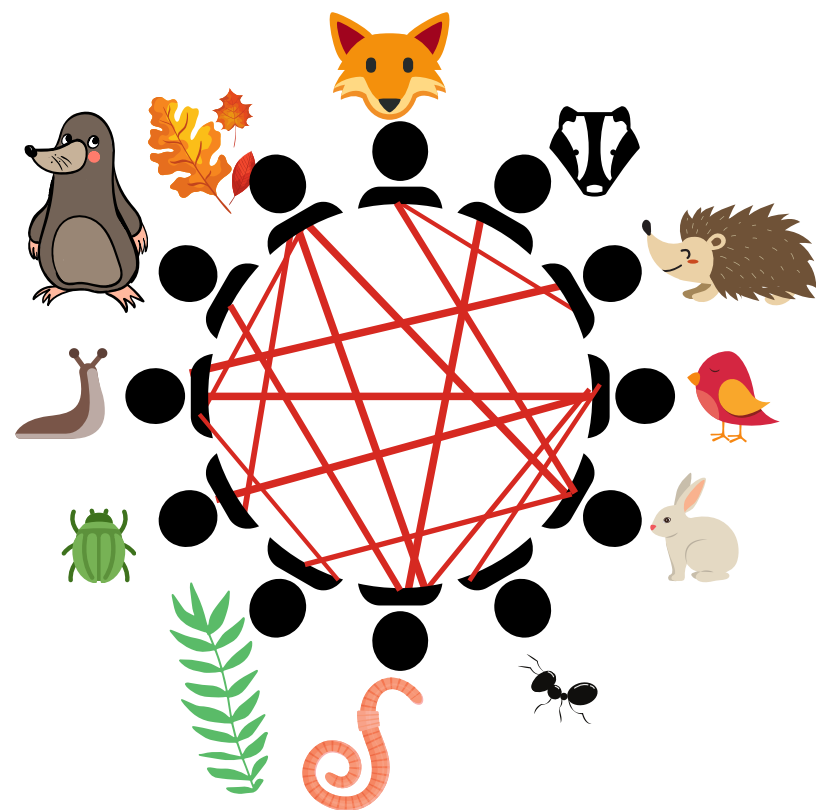
Fox

Rabbit

Once they understand why each animal makes a specific hole, the teacher shouts the animals name and students make the matching shape. You can repeat with the whole class as well.



# UNDERGROUND INFORMATION SHEET



- Food Chain examples:**
- Plant - earthworm - Badger
  - Plant - Beetle - Bird
  - Plant - Slug - Hedgehog - Fox
  - Plant - Slug - Bird
  - Plant - Rabbit - Fox
  - Plant - Earthworm - Bird
  - Plant - Beetle - Hedgehog - Fox
  - Plant - Rabbit - Fox.

**String game with interlinked food web and as one aspect is affect the rest are affected.**

**Badgers make a hole which looks like a D on its side with lots of soil piled up in front as they create a maze of tunnels connecting to other holes. Badger sett is the name of these tunnels occupied by a clan.**

**Rabbits make small round holes and usually there are many in one small area. They are much smaller animals.**

**Foxes are taller and have an oval entry hole and usually only 1 is found as usually it is a solitary animal.**