

EXTRA - CURRICULAR CLUBS 2025-26



CLUB / ACTIVITY BLURB

S1/ S2 FOOTBALL CLUB	<i>The chance for S1 /2 to play football at Lunchtime</i>
QUIET LUNCH CLUB	<i>Aimed at S1-S6 who need a quieter space for lunch in F006</i>
MATHS CHALLENGE	<i>From S1-S6, there are national competitions (individual and team ones) for eager young Mathletes!</i>
S1-S3 MODERN LANGUAGES HOMEWORK CLUB	<i>Homework club run by senior Language Ambassadors</i>
S1-S6 GIRLS NETBALL	<i>Aimed at S1-S6 girls. Regular league and cup matches will follow.</i>
KILMARNOCK SCHOOL PIPE BAND	<i>Pipers and pipe band drummers gather to rehearse for concerts and competitions</i>
GUITAR MAINTENCE CLUB	<i>Basic repairs, set-ups and upgrades, anything needed to get your guitar playing better</i>
LEGO ROBOTICS CLUB	<i>Pupils learn how to build and code robots to perform real world tasks using lego spike prime kits.</i>
FASHION CLUB	<i>Lunchtime club aimed at any pupils who would like to learn to upcycle</i>
CHEERLEADING	<i>Come along and learn some basis cheerleading Skills</i>

CLUB / ACTIVITY BLURB

DANCE CLUB	After school club where pupils can come and learn routines and better their dance opportunities/ Taking part in DANCE FEST
MINECRAFT	After school club for pupils to collaborate and build in Minecraft together.
CHESS CLUB	Lunchtime club where pupils can come and play chess
SOCIAL SUBJECTS MOVIE CLUB	Pupils bring their lunch and watch a Social Subjects related movie
MATHS CLUB	Lunchtime club for pupils to get help with homework/support with work/games /puzzles and much more
S1,S2 & S3 FOOTBALL CLUB	The chance for S1 -S3 to play football at Lunchtime
CONCERT BAND	Pupils who play brass, woodwind or percussion instruments are invited to rehearse before school to prepare for performances at concerts and competitions.
WELLBEING WEDNESDAYS	Lunchtime drop in for a chat and a chance to take part in some activities focused on wellbeing
CHINESE CULTURE CLUB	Lunchtime club where pupils can come and learn more about Chinese Culture

CLUB / ACTIVITY BLURB

COMPUTING CLUB	A space for pupils to use computers for study, homework, and other interests
WRITING & PODCASTING	Pupils will work on their writing skills, enter creative writing competitions and work as a team to create and publish podcasts about their writing, their interests and - of course - Grange Academy
S1-S3 JUNIOR CHOIR	Pupils in S1 – S3 and staff rehearsing to perform in a variety of events.
SENIOR & STAFF CHOIR	Pupils in S3-S6 and staff rehearsing to perform in a variety of events
BADMINTON CLUB	Open to all S1-S6 pupils. A chance to play badminton in a fun environment, both socially and/or competitively.
DESIGN AND TECHNOLOGY CLUB	Pupils will be involved in craft activities and designing and making products. There will be an emphasis on recycling materials and social enterprise.
S1 SPANISH CULTURE CLUB	Lunchtime group focussing on the culture of Spain, Spanish Speaking countries and Fiestas.

CLUB / ACTIVITY BLURB

S1 FUTSAL CLUB	<i>Futsal club aimed at S1 football pupils</i>
BRITISH SIGN LANGUAGE CLUB	<i>Learn sign language in a fun and easy way</i>
GIRLS & BOYS RUGBY	<i>Aimed at all Boys and all girls. Regular league and cup matches will follow.</i>
ART CLUB	<i>Pupils will participate in a range of Art & Design activities</i>
JUNK KOUTURE CLUB	<i>Creating Fashion from JUNK</i>
S3 MODERN LANGUAGES CLUB	<i>Lunchtime club for those interested in taking part in the GCHQ National Language competition in November.</i>
DND CLUB	<i>Embark on epic adventures with our D&D club! Bring your lunch, learn how to role a character and then join an adventure where you can, solve puzzles, battle monsters, and weave collaborative stories in a unique fantasy world.</i>
MOVIE CLUB	<i>Pupils can bring their lunch to the library and watch a movie on the Promethean screen.</i>
COMPUTING CLUB	<i>A space for pupils to use computers for study, homework, and other interests</i>

CLUB / ACTIVITY BLURB

S1 & S2 TAYLOR SWIFT CLUB	<i>Bracelet Making Club, Bring your lunch, listen to music and make Bracelets</i>
ASTRONOMY CLUB	<i>Lunchtime club for anyone interested in stars, galaxies and the universe</i>
DRAMA CLUB	<i>Pupils will participate in a range of Drama activities</i>

MONDAY

WHAT?	WHERE?	WHEN?	WHO?
S1/ S2 FOOTBALL CLUB	ASTRO	LUNCHTIME	MR BAIRD - PE
QUIET LUNCH CLUB	F099	LUNCHTIME	MRS MORTON
MATHS CHALLENGE WITH MR SMITH	MATHS DEPARTMENT	LUNCHTIME	MR SMITH
S1-S3 MODERN LANGUAGES HOMEWORK CLUB	MODERN LANGUAGES DEPT	LUNCHTIME	LANGUAGES AMBASSADORS
S1-S6 GIRLS NETBALL	PE DEPARTMENT	AFTERSCHOOL 3.45-5PM	MISS SHANKLAND
KILMARNOCK SCHOOL PIPE BAND	TBC	AFTERSCHOOL 3.45PM	MR ARMSTRONG

TUESDAY

WHAT?	WHERE?	WHEN?	WHO?
GUITAR MAINTENCE CLUB	SCIENCE	LUNCHTIME	MR MCPHERSON
LEGO ROBOTICS CLUB	COMUTING DEPT	LUNCHTIME	MR GRAHAM
FASHION CLUB	ART DEPARTMENT	LUNCHTIME	MRS WALLACE
MATHS CHALLENGE WITH MR SMITH	MATHS DEPARTMENT	LUNCHTIME	MR SMITH
MATHS CLUB	MATHS DEPARTMENT	LUNCHTIME	MR TAYLOR
S1,S2 & S3 FOOTBALL CLUB	ASTRO	LUNCHTIME	MR BAIRD - PE
COMPUTING CLUB	COMPUTING DEPT, S017	LUNCHTIME	MR REID
WRITING & PODCASTING	ENGLISH DEPT F088	LUNCHTIME	MS HENDERSON & MS SIMMS
S1-S3 JUNIOR CHOIR	MUSIC DEPARTMENT	LUNCHTIME	MUSIC STAFF

TUESDAY

WHAT?

WHERE?

WHEN?

WHO?

BADMINTON CLUB

PE DEPT

AFTER SCHOOL 3.35PM

MR ALLAN

WEDNESDAY

WHAT?	WHERE?	WHEN?	WHO?
S1 FUTSAL CLUB	PE DEPT	BEFORE SCHOOL 8.15AM	MR ADAMS
WELLBEING WEDNESDAYS	OUTSIDE PEACE AREA	LUNCHTIME	MHWP AMBASSADORS
DESIGN AND TECHNOLOGY CLUB	DESIGN AND TECHNOLOGY CLUB	LUNCHTIME	MRS CAIRNS
MATHS CHALLENGE WITH MR SMITH	MATHS DEPARTMENT	LUNCHTIME	MR SMITH
S1 SPANISH CULTURE CLUB	MODERN LANGUAGES DEPT	LUNCHTIME	LANGUAGES AMBASSADORS
CHINESE CULTURE CLUB	MODERN LANGUAGES DEPT	LUNCHTIME	MRS JIANG
COMPUTING CLUB	COMPUTING DEPT, S017	LUNCHTIME	MR REID

WEDNESDAY

WHAT?	WHERE?	WHEN?	WHO?
SOCIAL SUBJECTS FILM CLUB	SOCIAL SUBJECTS G169	LUNCHTIME	SOCIAL SUBJECT STAFF
BRITISH SIGN LANGUAGE CLUB	HEARING IMPAIRED DEPT	LUNCHTIME	MRS SMITH
ASTRONOMY CLUB	SCIENCE SO24	LUNCHTIME	DR TELFER
GIRLS & BOYS RUGBY	PE DEPT/RUGBY PITCH	AFTERSCHOOL	KRFC
CONCERT BAND	MUSIC DEPARTMENT	AFTERSCHOOL	MUSIC STAFF
CHEER CLUB	PE DEPARTMENT	AFTER SCHOOL 3.35PM	MRS MCLEAN & MRS MARSHALL

THURSDAY

WHAT?	WHERE?	WHEN?	WHO?
LEGO ROBOTICS CLUB	COMPUTING DEPT	LUNCHTIME	MR GRAHAM - COMPUTING
JUNK KOUTURE CLUB	ART DEPARTMENT	LUNCHTIME	MRS LENNOX
BRITISH SIGN LANGUAGE CLUB	HEARING IMPAIRED DEPT	LUNCHTIME	MRS SMITH
QUIET LUNCH CLUB	F099	LUNCHTIME	MRS MORTON
MATHS CHALLENGE WITH MR SMITH	MATHS DEPARTMENT	LUNCHTIME	MR SMITH
CHESS CLUB	MATHS ROOM F062	LUNCHTIME	MR TAYLOR
S1 & S2 TAYLOR SWIFT CLUB	SOCIAL SUBJECTS DEPT	LUNCHTIME	MS PACITTI
S1-S6 DRAMA CLUB	DRAMA DEPT	LUNCHTIME	MISS CAMERON

THURSDAY

WHAT?	WHERE?	WHEN?	WHO?
S3 MODERN LANGUAGES CLUB	MODERN LANGUAGES DEPT	LUNCHTIME	MRS JACKSON
DND CLUB	SCIENCE DEPT, S012	LUNCHTIME	MRS SMITH
MOVIE CLUB	LIBRARY	LUNCHTIME	MS COOPER
COMPUTING CLUB	COMPUTING DEPT, S017	LUNCHTIME	MR REID
ART & DESIGN CLUB	ART DEPARTMENT	LUNCHTIME	MRS GRAY
MINECRAFT	COMPUTING DEPARTMENT	AFTERSCHOOL TILL 4.30PM	MR REID & MR GRAHAM
DANCE CLUB	PE DEPARTMENT	AFTERSCHOOL TILL 4.30PM	S6 LEADERS

FRIDAY

WHAT?

WHERE?

WHEN?

WHO?

SENIOR & STAFF CHOIR

MUSIC DEPARTMENT

AFTER SCHOOL 3.45PM

MUSIC STAFF

COMPUTING CLUB

WHAT?

COMPUTING CLUB

A space for pupils to use computers for study, homework, and other interests

WHERE?

COMPUTING DEPT.
ROOM S017

WHEN?

TUESDAY, WEDNESDAY
THURSDAY LUNCHTIME

WHO?

ALL PUPILS
Staff: Mr Reid

WHAT?

ART & DESIGN CLUB

Pupils will participate in a range of Art & Design activities.

WHERE?

ART & DESIGN DEPT

WHEN?

THURSDAY LUNCH TIME

WHO?

ALL PUPILS

Staff: Mrs Gray

ART & DESIGN CLUB

KILMARNOCK SCHOOLS PIPE BAND



WHAT?

PIPE BAND

Pipers and pipe band drummers gather to rehearse for concerts and competitions.

WHERE?

TO BE CONFIRMED

WHEN?

MONDAY AFTER SCHOOL

WHO?

ALL PUPILS

Staff: Mr Armstrong

WHAT?

SENIOR & STAFF CHOIR

Pupils in S3-S6 and staff rehearsing to perform in a variety of events.

SENIORS & STAFF CHOIR

WHERE?

MUSIC DEPT

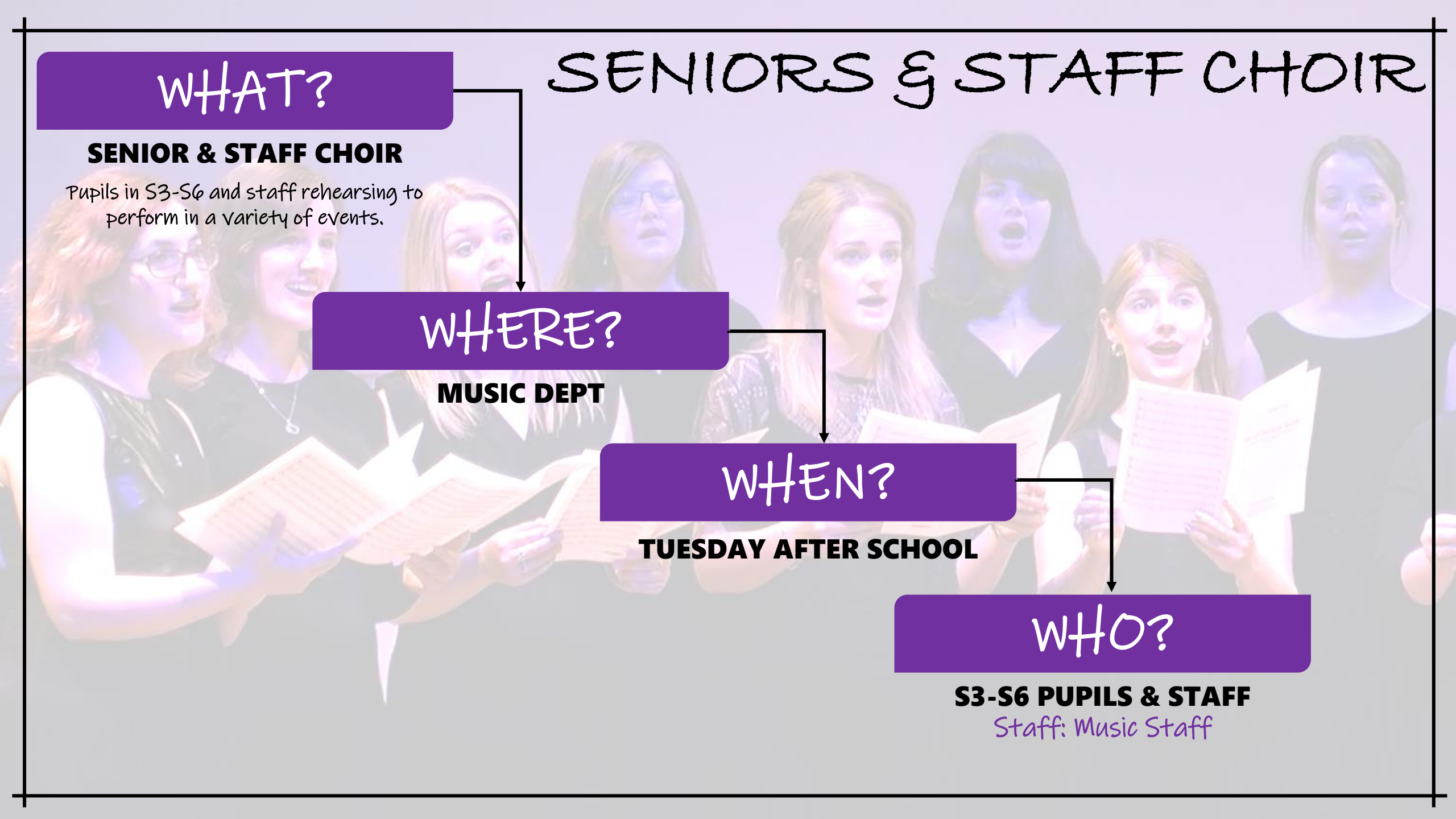
WHEN?

TUESDAY AFTER SCHOOL

WHO?

S3-S6 PUPILS & STAFF

Staff: Music Staff



MINECRAFT CLUB

WHAT?

MINECRAFT CLUB

After school club for pupils to collaborate and build in Minecraft together.

WHERE?

COMPUTING DEPT

WHEN?

**THURSDAY AFTERSCHOOL
TILL 4.30pm**

WHO?

ALL PUPILS

Staff: Mr Reid & Mr Graham

WHAT?

JUNIOR CHOIR

Pupils in S1 – S3 and staff rehearsing to perform in a variety of events.

WHERE?

MUSIC DEPT

WHEN?

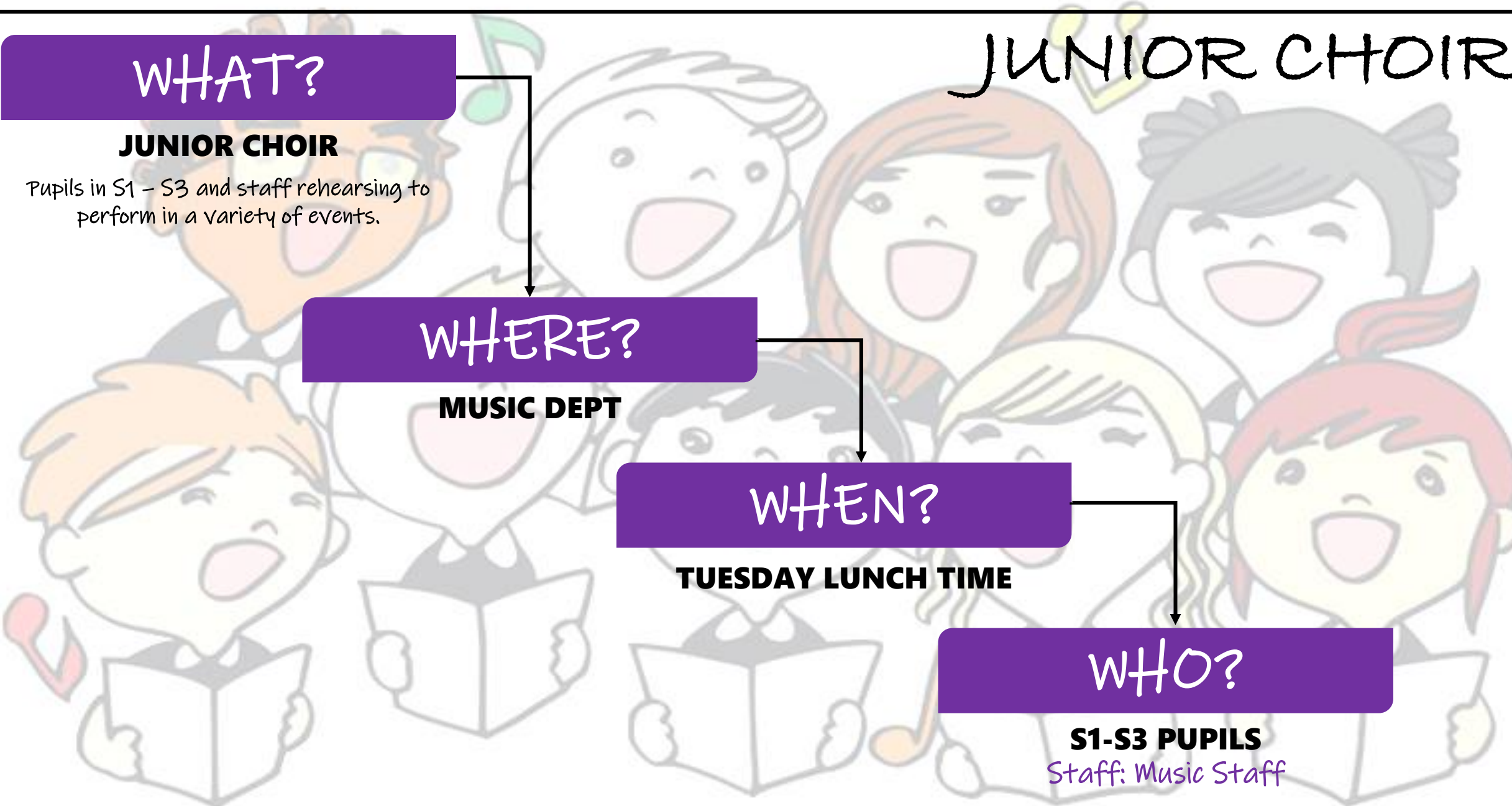
TUESDAY LUNCH TIME

WHO?

S1-S3 PUPILS

Staff: Music Staff

JUNIOR CHOIR



CONCERT BAND

WHAT?

CONCERT BAND

Pupils who play brass, woodwind or percussion instruments are invited to rehearse before school to prepare for performances at concerts and competitions.

WHERE?

MUSIC DEPT

WHEN?

WEDNESDAY BEFORE SCHOOL

WHO?

ALL PUPILS

Staff: Music Staff

BADMINTON CLUB



WHAT?

BADMINTON CLUB

Open to all S1-S6 pupils throughout the year, but close to SQA practical performance assessments, 'target groups' will be identified to assist pupils in their performance marks

WHERE?

PE DEPT

WHEN?

TUESDAY AFTER SCHOOL

WHO?

ALL PUPILS

Staff: Mr Allan

WRITING & PODCASTING CLUB

WHAT?

WRITING & PODCASTING CLUB

Pupils will work on their writing skills, enter creative writing competitions and work as a team to create and publish podcasts about their writing, their interests and - of course - Grange Academy.

WHERE?

ENGLISH DEPT ROOM F088

WHEN?

TUESDAY LUNCH TIME

WHO?

ALL PUPILS

Staff: Ms Henderson & Ms Simm

WHAT?

RUGBY CLUB BOYS AND GIRLS

Aimed at all Boys and all girls. Regular league and cup matches will follow.

RUGBY CLUB BOYS AND GIRLS

WHERE?

PE DEPT

WHEN?

WEDNESDAY AFTER SCHOOL

WHO?

BOYS AND ALL GIRLS

Staff: KRFC

LIBRARY MOVIE CLUB

WHAT?

LIBRARY MOVIE CLUB

Pupils can bring their lunch to the library and watch a movie on the Promethean screen.

WHERE?

LIBRARY

WHEN?

THURSDAY LUNCH TIME

WHO?

ALL PUPILS

Staff: Miss Cooper

WHAT?

FOOTBALL CLUB

FOOTBALL CLUB

WHERE?

ASTRO

WHEN?

**MONDAY LUNCHTIME-
S1/S2(ONLY)
TUESDAY LUNCHTIME
S1, S2 & S3**

WHO?

S1-S3
Staff: Mr Baird

WHAT?

FUTSAL CLUB

Futsal club aimed at S1 football pupils.

WHERE?

PE DEPT

WHEN?

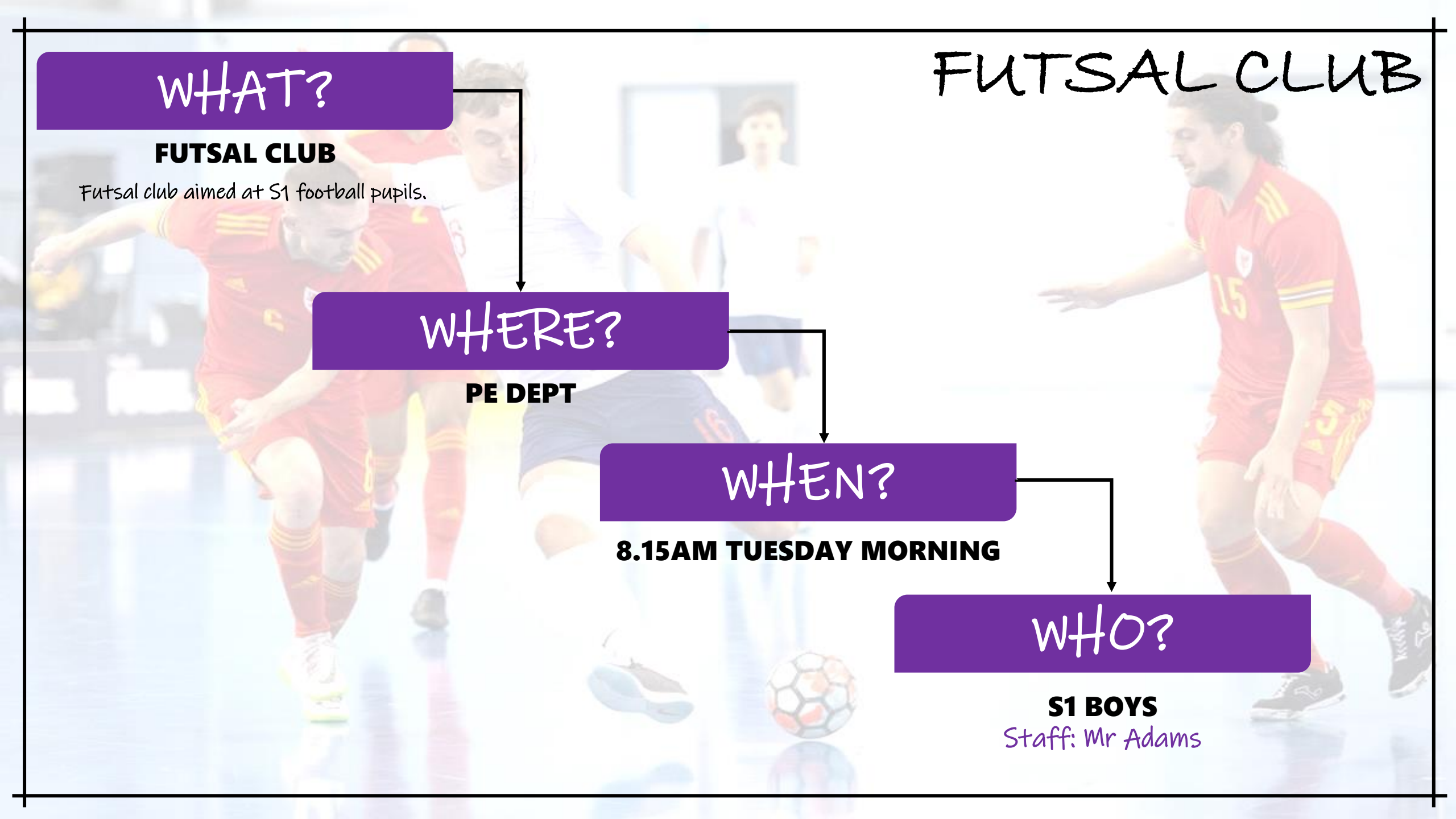
8.15AM TUESDAY MORNING

WHO?

S1 BOYS

Staff: Mr Adams

FUTSAL CLUB



WHAT?

SPANISH CULTURE CLUB

Lunchtime group focussing on the culture of Spain, Spanish Speaking countries and Fiestas.

S1 SPANISH CULTURE CLUB

WHERE?

MODERN LANGUAGES DEPT

WHEN?

WEDNESDAY

WHO?

S1 PUPILS

Staff: Language Ambassadors

WHAT?

GIRLS NETBALL CLUB

Aimed at S1-S6 girls. Regular league and cup matches will follow.

GIRLS S1-S6 NETBALL CLUB

WHERE?

PE DEPT

WHEN?

MONDAY AFTER SCHOOL 3.40-5.00pm

WHO?

S1-S6 GIRLS

Staff: Miss Shankland

CHINESE CULTURE LUNCH CLUB

WHAT?

CHINESE CULTURE CLUB

Open to all pupils S1 - S6

WHERE?

MODERN LANGUAGES DEPT

WHEN?

WEDNESDAY LUNCH TIME

WHO?

ALL PUPILS

Staff: Mrs Jiang

MODERN LANGUAGE BGE HOMEWORK CLUB

WHAT?

MOD LANG HOMEWORK CLUB

Homework club run by senior Language Ambassadors

WHERE?

MODERN LANGUAGES DEPT

WHEN?

MONDAY LUNCH TIME

WHO?

S1 – S3 PUPILS

Staff: Languages Ambassadors

CHESS CLUB

WHAT?

CHESS CLUB

Lunchtime club where pupils can come and play chess

WHERE?

MATHS DEPT

WHEN?

THURSDAY LUNCH TIME

WHO?

ALL PUPILS

Staff: Mr Taylor

MATHS CHALLENGE CLUB

WHAT?

RITANGLE CLUB

Fiendish Team Maths Challenge for S5/S6
problem solvers!

WHERE?

MATHS DEPT

WHEN?

MONDAY - FRIDAY

WHO?

ALL PUPILS
Staff: Mr Smith

MATH CLUB

QUIET LUNCH CLUB

WHAT?

QUIET LUNCH CLUB

Aimed at S1-S6 who need a quieter space for lunch in F006

WHERE?

F099

WHEN?

MONDAY & THURSDAY LUNCH TIME

WHO?

ALL PUPILS

Staff: Mrs Morton

MATHS CLUB

WHAT?

MATHS CLUB

Lunchtime club for pupils to get help with homework/support with work/games/puzzles and much more

WHERE?

MATHS DEPT

WHEN?

TUESDAY LUNCH TIME

WHO?

ALL PUPILS

Staff: Mr Taylor

MATH CLUB

FASHION CLUB

WHAT?

FRIENDSHIP CLUB

Lunchtime club aimed at any pupils who would like to learn to upcycle

WHERE?

ART DEPARTMENT

WHEN?

TUESDAY / WEDNESDAY LUNCH TIME

WHO?

ALL PUPILS

Staff: Mrs Wallace

DESIGN AND TECHNOLOGY - CRAFT CLUB

WHAT?

DESIGN AND TECHNOLOGY CLUB

"Pupils will be involved in craft activities and designing and making products. There will be an emphasis on recycling materials and social enterprise."

WHERE?

DESIGN AND TECHNOLOGY

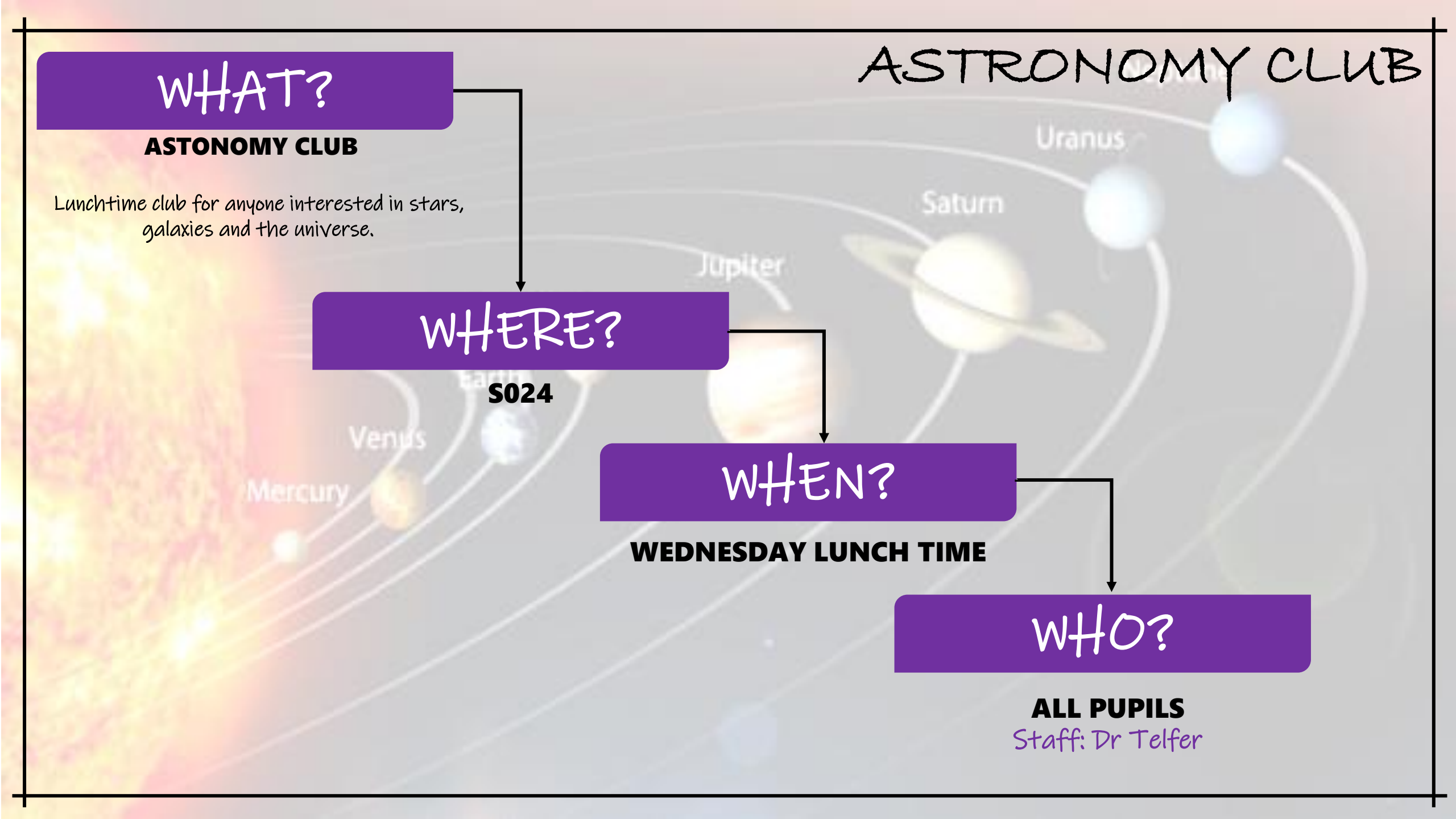
WHEN?

WEDNESDAY LUNCH TIME

WHO?

ALL PUPILS
Staff: Mrs Cairns

ASTRONOMY CLUB



WHAT?

ASTONOMY CLUB

Lunchtime club for anyone interested in stars, galaxies and the universe.

WHERE?

S024

WHEN?

WEDNESDAY LUNCH TIME

WHO?

ALL PUPILS

Staff: Dr Telfer

GITAR MAINTENANCE CLUB



WHAT?

GUITAR MAINTENANCE CLUB

Basic repairs, set-ups and upgrades,
anything needed to get your guitar playing
better

WHERE?

SCIENCE

WHEN?

TUESDAY LUNCHTIME

WHO?

ALL PUPILS

Staff: Mr McPherson

SOCIAL SUBJECTS FILM CLUB

WHAT?

SOCIAL SUBJECTS FILM CLUB

Pupils bring their lunch and watch a Social Subjects related movie

WHERE?

SOCIAL SUBJECTS DEPT G169

WHEN?

WEDNESDAY LUNCH TIME

WHO?

ALL PUPILS

Staff: Mr Callaghan

CHEER CLUB

WHAT?

LEARN CHEER LEADING Skills

WHERE?

PE DEPARTMENT

WHEN?

WEDNESDAY AFTERSCHOOL

WHO?

S2/3

Staff: Mrs Marshall and Mrs
McLean

JUNK KOUTURE CLUB

WHAT?

Creating Fashion from JUNK

WHERE?

ART DEPT

WHEN?

THURSDAY LUNCH TIME

WHO?

ALL PUPILS

Staff: Mrs Lennox

WELLBEING WEDNESDAYS

WHAT?

Lunchtime drop in for a chat and a chance to take part in some activities focused on wellbeing

WHERE?

**AREA OUTSIDE PEACE-
WELLBEING HUB**

WHEN?

WEDNESDAY LUNCH TIME

WHO?

ALL PUPILS
Staff: Ms Cooper and M+WB
Ambassadors

BRITISH SIGN LANGUAGUE CLUB

WHAT?

BSL CLUB

WHERE?

HEARING IMPAIRED DEPT

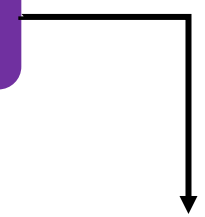
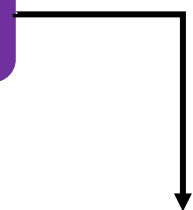
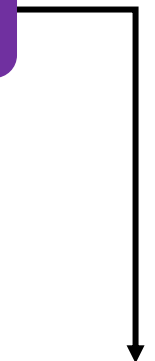
WHEN?

THURSDAY LUNCH TIME

WHO?

ALL PUPILS

Staff: Mrs Smith



DANCE CLUB

WHAT?

After school club where pupils can come and learn routines and better their dance opportunities/ Taking part in DANCE FEST

WHERE?

PE DEPARTMENT

WHEN?

THURSDAY- AFTERSCHOOL

WHO?

S6 LEADERS

DND CLUB

WHAT?

Embark on epic adventures with our D&D club! Bring your lunch, learn how to role a character and then join an adventure where you can, solve puzzles, battle monsters, and weave collaborative stories in a unique fantasy world.

WHERE?

SCIENCE DEPT S012

WHEN?

THURSDAY LUNCH TIME

WHO?

ALL PUPILS

Staff: Mrs Smith