



Grange Academy Weekly Bulletin

16th March 2026

Kooth Mental Health Service

S1 – 6

The Kooth logo features the word "kooth" in a bold, black, lowercase sans-serif font. The letter "o" is replaced by a stylized white speech bubble with a black outline, and the letter "h" is replaced by a stylized white face with a black outline.

You're not alone

Access support from other young people
and professionals, all at your own pace



Kooth is an excellent online service, backed by the NHS, which supports young people's mental health and general wellbeing.

As S4 - S6 students are starting the final run towards their exams next month, Kooth have shared a free Exam Stress resource for students, staff and parents/carers.

[Coping With Exam Stress](#)

Kooth is available for **all young people aged 14 – 24** in East Ayrshire, offering free, safe, and anonymous mental health support.

Click on the link below, or scan the QR code to register for further information about the service.

www.kooth.com

If you require any further information, please contact Mr Bruce in Guidance.

Easter School Timetable

S4 – 6


This year, Grange Academy Easter School will be running on the following dates:

Tuesday 7th of April
Wednesday 8th of April
Monday 13th of April
Tuesday 14th of April
Wednesday 15th of April

Click on the link below to download the full timetable:

[Easter School 2026](#)

East Ayrshire Trade Apprenticeships



S4 – 6

These posts are temporary for 4 years to allow the successful candidate to complete their apprenticeship.

Click on the links below for more info about each post:

[Joiner](#)

[Electrician](#)

[Bricklayer](#)

[Plasterer](#)

[Plumber](#)

Speak to Scott, the Careers Adviser for more details.

Start date is August 2026.

The starting rate for this post is £13.45 per hour, moving to a percentage of the relevant grade in year 3.

As part of the recruitment and selection procedure, if your application reaches the next stage, you will be required to attend for a skills test and a formal interview.

**** THE SKILLS TESTING AND FORMAL INTERVIEWS WILL TAKE PLACE BETWEEN MONDAY 1 JUNE TO FRIDAY 26 JUNE 2026. ALL APPLICANTS MUST BE AVAILABLE TO ATTEND BETWEEN THESE DATES IN ORDER TO BE CONSIDERED FOR THE ROLE ****

Careers Events

MARCH 2026

TUE
24

Ayr Campus

Refectory Canteen in Dam Park
10am-2pm

WED
25

Kilmarnock Campus

Atrium
10am-2pm

THU
26

Kilwinning Campus

Main Reception Area
10am-2pm

All enquiries or more details regarding the events to Careers & Employability Teams.
SE@ayrshire.ac.uk

Careers Events

S4 – 6

The following employers will be attending Kilmarnock Campus on Wednesday 25th March

1. Ayrshire & Arran NHS, People Safety & Culture
2. Army
3. Ashleigh Construction
4. Ayrshire College
5. Enable Scotland
6. CVO East Ayrshire
7. Jam Street Dance
8. Fire Service
9. Partners For Inclusion
10. Police Scotland
11. Royal Navy
12. Scottish Golf Young Leaders
13. Skills Development Scotland (SDS)
14. SFA Referees
15. The Killie Community
16. UWS
17. Workforce & Future Skills
18. Merck
19. Royal Air Force
20. Strada Environmental
21. Utility Warehouse
22. Vattenfall Wind Farms
23. Prestwick Airport
24. Action for Children
25. James Frew
26. Home Instead
27. Care at Home
28. Breedon Group
29. Buzzworks
30. Whitbread
31. Prestwick Golf Club

S1 – 3

Hug a Dog!

£1 for 3 Minutes
Play & Give Treats!

£3 for 5 Minutes (Group of Up to 3)
Have Fun Together!

£2 for 5 Minutes
Just You & the Dog

S6 pupils will be in the street
Wednesday 11th of March at junior
interval and **Monday 16th March**
at junior interval to sign up

Senior Snowball 2026

S4 – 5



We have been amazed by the demand for tickets to the Senior Snowball Event and are extending the deadline to buy tickets until **Friday 20th March.**

However, the tickets are selling fast so please buy on ParentPay ASAP to avoid missing out on the party of the year! 🎅

To secure your ticket, you need to pay a £10 deposit on ParentPay.

Neurodivergent Club

Here at Grange Academy, we have been working in conjunction with NEST (Neurodevelopmental Empowerment and Strategy Team) to improve the understanding of Neurodivergence for both staff and pupils.

With excellent support from NEST, we have now launched "The Hang Out Hub"

It takes place in **S032 on Monday lunchtimes** from 1.20pm
(No longer taking place in the library)

If you would like to find out more about it:

- Come along to the club
- Speak to your guidance teacher at Ready to Learn or in PSE
- Parents/Guardians can contact their child's guidance teacher or Mr Bruce to find out more.

This is a drop in, so pupils can come whenever they would like when its on, with no further commitment.

THE HANG OUT HUB

ROOM S032

Lunchtime

MONDAYS
1.20PM

- ARE YOU NEURODIVERGENT AND LOOKING TO CONNECT WITH LIKE MINDED PEOPLE ?

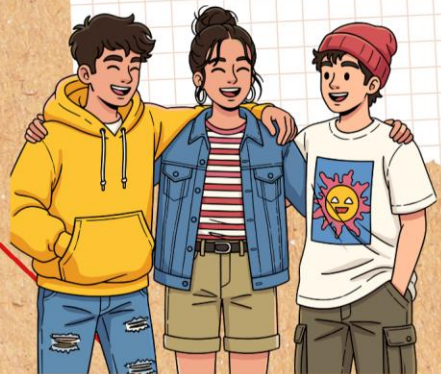
- WE OFFER A SAFE SPACE TO COME CHAT, HAVE YOUR LUNCH AND MEET NEW FRIENDS.



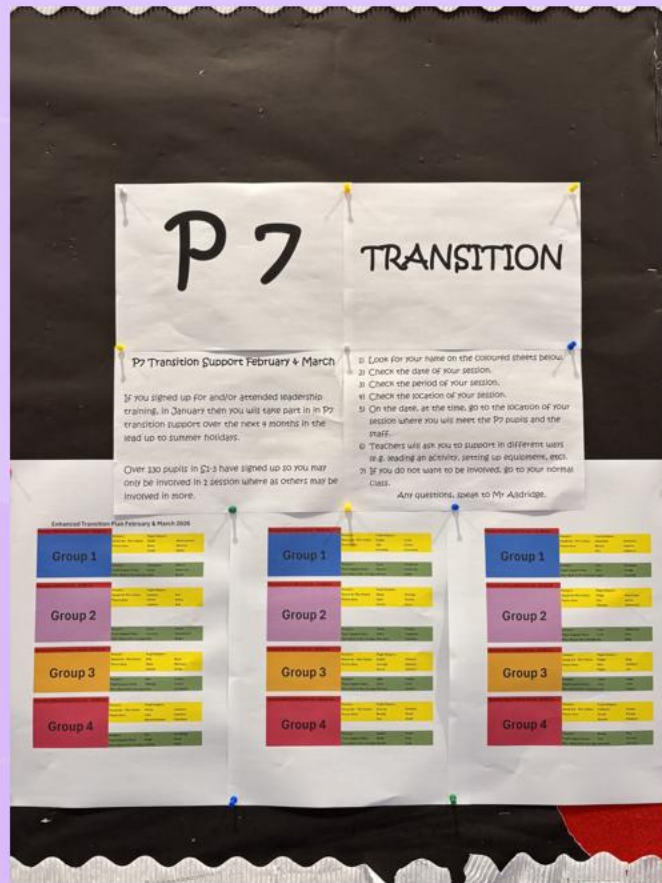
YOU DO NOT NEED TO HAVE A DIAGNOSIS TO JOIN US

LED BY PAIGE AND POPPY
6TH YEAR

IF YOU HAVE ANY QUESTIONS PLEASE REACH OUT TO YOUR GUIDANCE TEACHER OR MR BRUCE AT READY TO LEARN.



P7 Transition



If you are 1 of the 135 pupils who signed up for and/or took part in S1-3 leadership training, you will now be given the opportunity to support with P7 transition.

Look for this display on the noticeboard in the street to find out the date, time and location of your session. More sessions will be added after the Easter holidays, so don't worry if you don't see your name.

If you have any questions or do not wish to take part, please see Mr Alldridge.

Foodbank Collection

S1 – 6



The following items would be most gratefully received;

Beans	Custard,	Jam
Tinned spaghetti,	Ravioli,	Macaroni,
Tinned veg,	Long grain rice,	Cuppa soups,
Tinned meat,	Pasta sauce,	Diluting juice,
Tinned Soup	Sweets,	Toiletries
UHT Milk	Crisps,	

As always, in the run-up to the Easter break, we will be running a foodbank collection in the library.

If you can spare even just one of the items listed here, it will make a huge difference to local people in need.

Please bring all donations to Miss Cooper by the end of Wednesday 1st April.

Many thanks in advance.

BSL Recap

S1 – 6

Can you remember the sign from the previous bulletin?



Hold your fist next to your temple.
Then 'ping' your pointer finger up – it's like a
lightbulb lighting up near your head!

BSL Sign of the Week

S1 – 6



Hold up the pointer finger of one hand - this represents a person.

Hold your other hand flat, and 'brush' it across the pointer finger – first with the front of the hand and then again with the back of the hand.



Have a great week, Grange.

Work hard.

Be kind.