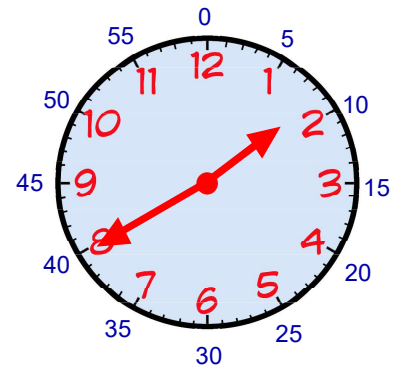


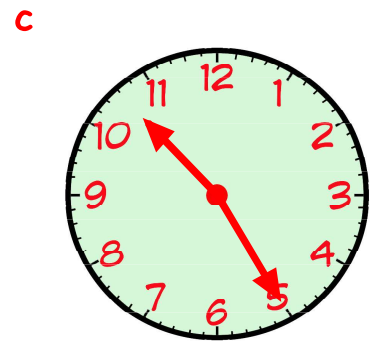
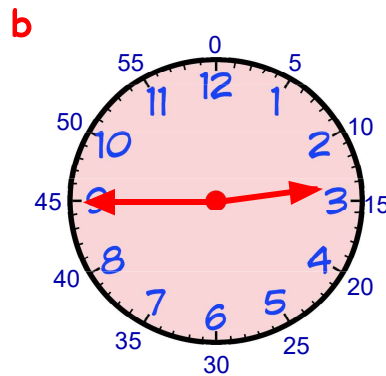
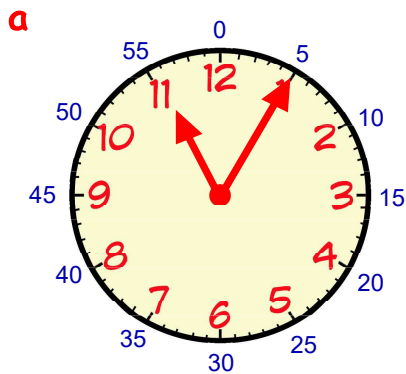
**The 3
9's**

Revisit - Review - Revise

1. The time on this clock can be written as
1.40 or **twenty to two**



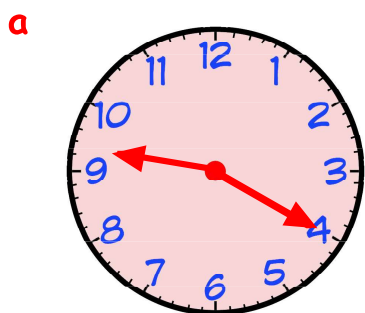
Write each of these times in 2 ways.



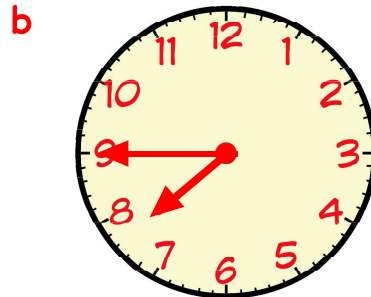
2. Write these digital clock times using words :-



3. Write each time below in 12 hour form using **am** or **pm** :-



Sunday breakfast



supper- time

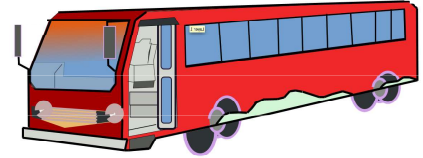


get up for school

4. Shown below is part of a bus timetable.

Aberdeen	→	Dundee	→	Edinburgh	→	Glasgow	→	Ayr
9·55 am		11·05 am			2·10 pm	

- a At what time did the bus leave Aberdeen?
(Answer in words).
- b The bus arrived in Edinburgh at five minutes to noon.
Write this time using am/pm.
- c The bus took 50 minutes to get from Glasgow to Ayr.
At what time did the bus arrive in Ayr?



5. Stan looks at part of a TV Times Guide.

CHANNEL 2

Sport is on at **twenty five past three in the afternoon.**

- a Write out these times in the same way :-
- (i) Game Show
- (ii) Soap

3:05	News
3:25	Sport
3:50	Game Show
4:15	Film
5:25	Soap
5:50	Evening News

- b Which programme starts at ten to six?



6. Change each of these times to **24 hour** form :-

- | | | |
|---------|---------|------------|
| a 5 am | b 1 pm | c 8 pm. |
| d 10 am | e 11 pm | f 3.30 pm. |

7. Change each of these times to **12 hour** form :-

- | | | |
|--------|--------|---------|
| a 0200 | b 1600 | c 2100. |
| d 1100 | e 2100 | f 1630. |

