

Grange Academy Weekly Bulletin

20th November 2023



Weekly Puzzle

Let's get our brains warmed up with a quick riddle. Can you solve it?

What well-known phrase is represented by the graphic below?



RESPECT

RESILIENCE

RESPONSIBILITY

EXCELLENCE

AMBITION

S2 Inter-house Football

S2 Inter-house Football will take place every day this week.

All games will kick off at 1:30 and finish at 1:45. Pupils should head straight to the astro (not PE) and play in school uniform (no need to get changed).

Pupils will not be allowed onto the astro with food or drink.

Any S2 pupil can play but teams need to have equal numbers.

Park School will also be fielding a mixed S1 - S3 team on each day so anyone who is not playing in their house fixture can join this game.

If you have any questions, talk to Mr Alldridge.

Fixtures

Monday 20th November

Bruce V Hamilton
Graham V Douglas

Tuesday 21st November

Graham V Hamilton
Douglas V Bruce

Wednesday 22nd November

Douglas V Hamilton
Bruce V Graham

IMPORTANT INFORMATION

SENIOR AND JUNIOR 'GRANGE IN THE COMMUNITY' CAPTAINS



We will have a meeting to prepare for the Christmas Fayre at lunchtime on MONDAY 20TH NOVEMBER (TODAY).

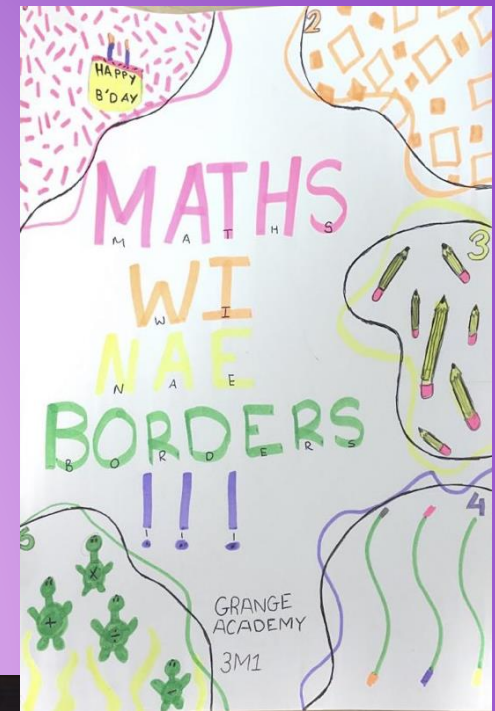
Bring your lunch to Mrs Morton's room, F006 near Guidance.



Maths Wi Nae Borders

Congratulations to Mrs Wilson's 3M1 class for their fantastic victory at Maths Wi Nae Borders!

They fought off some stiff competition to come out on top as the 2023 champions – well done!



HALL OF MATHS WI NAE BORDERS FAME

2017: GIRVAN ACADEMY (S4 CLASS)

2018: PEEBLES HIGH SCHOOL (CLASS 4X1)

2019: PEEBLES HIGH SCHOOL (CLASS 4Y1)

2020: GEORGE HERIOT'S SCHOOL (CLASS S2-1W)

2021: WEST CALDER HIGH SCHOOL (CLASS 3M1)

2022: PORTOBELLO HIGH SCHOOL (CLASS 5H1)

2023: GRANGE ACADEMY (CLASS 3M1)

RESPECT

RESILIENCE

RESPONSIBILITY

EXCELLENCE

AMBITION

Scholastic Book Fair



The Scholastic Book Fair will be taking place in the library from Monday 4th – Friday 8th December.

Stay tuned for more details to follow...

If any senior pupils would like to help as part of their Leadership classes, please speak to Miss Cooper as soon as possible.



Stressed about Study?

S4 Study Skills Support - Monday 20 November at lunchtime – bring your lunch!

FO89 English Mr Crosbie's room

LAST WEEK

- ✓ **We shared good study plans and effective ways to study.**
- ✓ **S5-S6s talked about “what motivates me.”**
- ✓ **Lots of great questions were asked and answered by our S5-S6 experts.**
- ✓ **S4s said they felt “less overwhelmed” and “much more positive”**

THIS WEEK

- ✓ **Bring along your revision materials and let us see them.**
- ✓ **Learn how to manage stress**
- ✓ **Ask anything – there are no stupid questions!**

See you there!

This event is aimed at S4 but S5-6 pupils are also welcome.

Foodbank Collection



As always, in the lead up to the Christmas holidays (only 25 school days left!) Miss Cooper will be running a foodbank collection in the library.

Anything you can give – even just one item – will be such a huge help to families in need in our local community.

Thank you so much.

Skills
Development
Scotland



Calling all parents and carers

Webinar for parents and carers of S2 and S3 pupils with advice on Option Choices and the support and resources available from Skills Development Scotland.

Thursday 7th December, 6:30pm to 7:15pm

Register here:

<https://option-choices-webinar.eventbrite.co.uk>

Or scan the QR code above.

WINTER LEAVERS

WE MAKE IT HAPPEN



DROP IN SL33



Leaving School? Needing Support to
Gain Qualifications / Employability
Skills / Work Experience

Drop In Mondays between 1 - 3 pm !!

SL33@east-ayrshire.gov.uk
01563 508020

33 Titchfield Street KA1 1QW
Kilmarnock

RESPECT

RESILIENCE

RESPONSIBILITY

EXCELLENCE

AMBITION

Grange Academy's Christmas Fayre

SATURDAY 25TH NOVEMBER 2023

10-2PM

GRANGE CAMPUS, BEECH AVENUE ENTRANCE

- ❄️ **Christmas Shopping with 40+ stalls**
- ❄️ **Live Festive Music**
- ❄️ **Carols from our Feeder Primaries**
- ❄️ **Pupil Christmas Crafts**
- ❄️ **Hamper Raffle**
- ❄️ **Christmas Inflatables**
- ❄️ **Christmas Art Installation designed by Grange Academy**
- ❄️ **Bottle Stall / Chocolate Stall**



£3 per adult, kids go free

Free tea/coffee/shortbread on arrival

On ParentPay or Pay at the door





GRANGE CHRISTMAS FAYRE

SATURDAY 25TH NOVEMBER 2023

We are looking for the following items for Christmas Fayre stalls:

- Preloved Christmas Jumpers
- New Christmas Wrapping
- Children's Books

Donations can be handed into the library, the office or Mrs Morton's room (F006).





THE GREAT CHRISTMAS RAFFLE

WE ARE LOOKING FOR DONATIONS FOR THE CHRISTMAS RAFFLE.



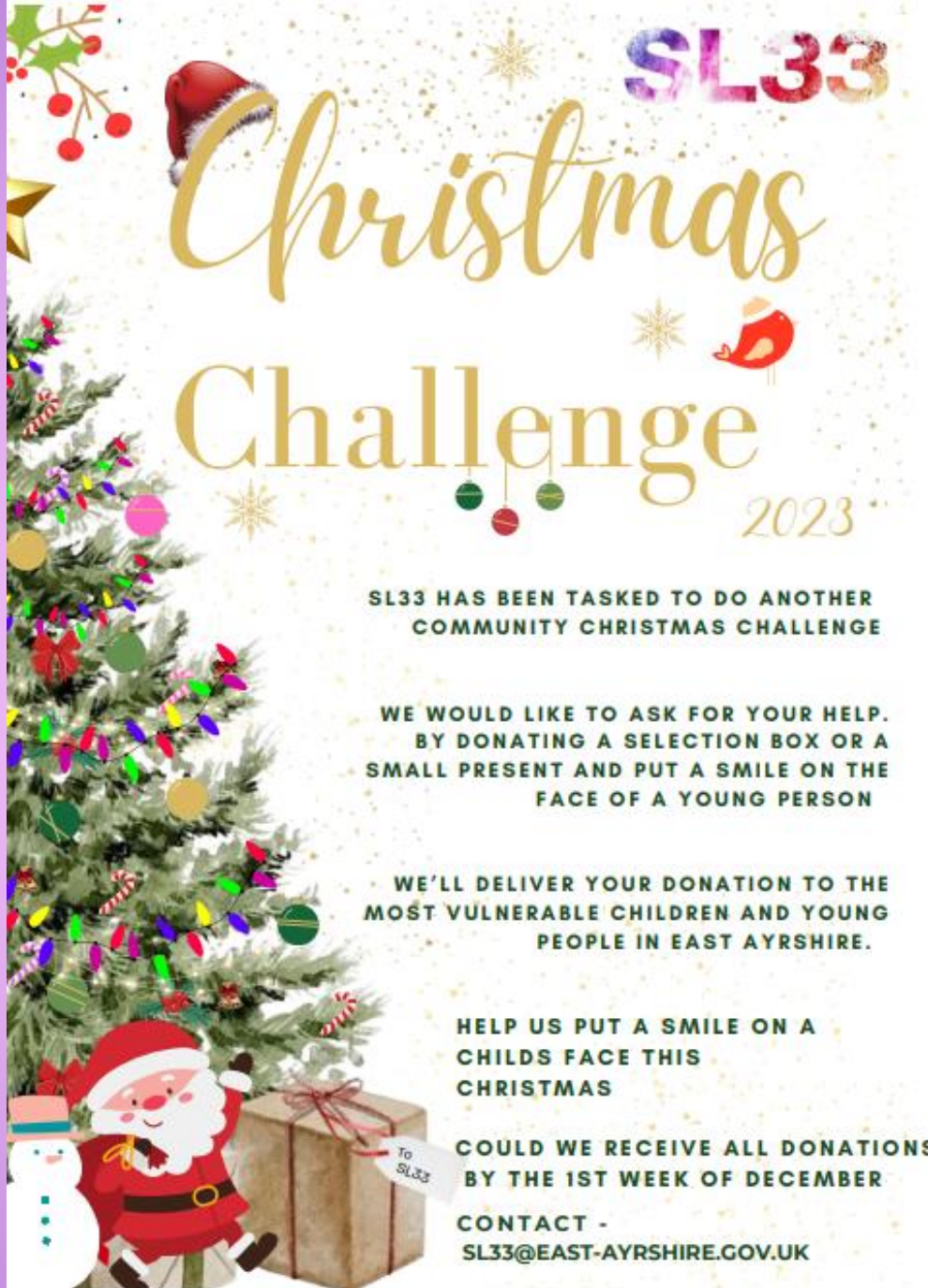
Donations can be handed into the office,
the library or Mrs Morton's room (F006)



Christmas Fayre Musical Performances

If you would like to sing or play something festive at the Christmas Fayre on Saturday 25th November, please speak to Mr Ramsay.





SL33
Christmas
Challenge
2023

**SL33 HAS BEEN TASKED TO DO ANOTHER
COMMUNITY CHRISTMAS CHALLENGE**

**WE WOULD LIKE TO ASK FOR YOUR HELP.
BY DONATING A SELECTION BOX OR A
SMALL PRESENT AND PUT A SMILE ON THE
FACE OF A YOUNG PERSON**

**WE'LL DELIVER YOUR DONATION TO THE
MOST VULNERABLE CHILDREN AND YOUNG
PEOPLE IN EAST AYRSHIRE.**

**HELP US PUT A SMILE ON A
CHILD'S FACE THIS
CHRISTMAS**

**COULD WE RECEIVE ALL DONATIONS
BY THE 1ST WEEK OF DECEMBER**

**CONTACT -
SL33@EAST-AYRSHIRE.GOV.UK**

RESPECT

RESILIENCE

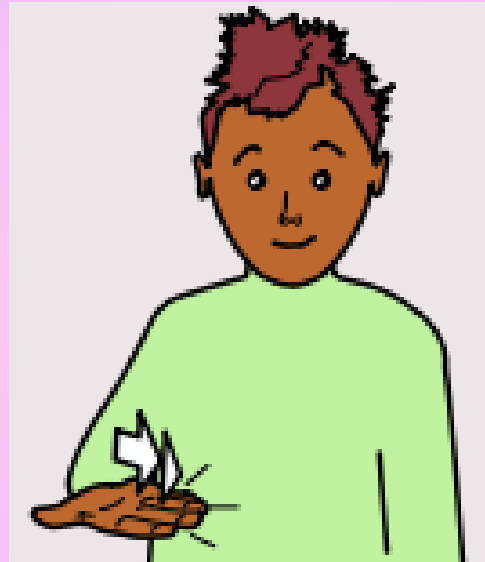
RESPONSIBILITY

EXCELLENCE

AMBITION

BSL Recap

Can you remember the sign from the last bulletin?



Business

Hold your hand with your palm facing up.
Tap the side of your hand against your waist.

RESPECT

RESILIENCE

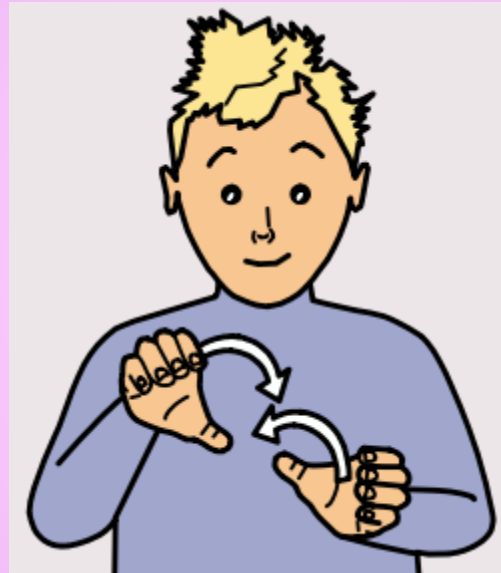
RESPONSIBILITY

EXCELLENCE

AMBITION

BSL Sign of the Week

Chemistry



Move your hands as if mixing beakers of chemicals together.

Weekly puzzle

Did you get it right?

**MAN
BOARD**

Man Overboard



Have a great week, Grange.

Work hard.

Be kind.

RESPECT

RESILIENCE

RESPONSIBILITY

EXCELLENCE

AMBITION