

Grange Academy Weekly Bulletin

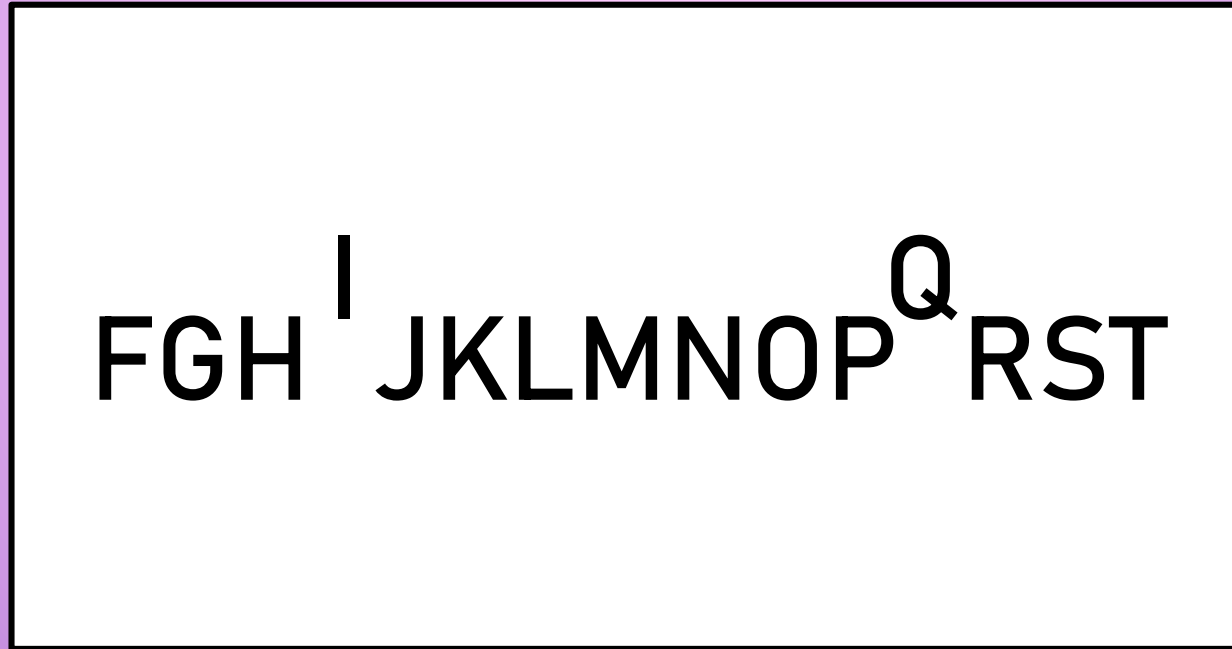
13th November 2023



Weekly Puzzle

Let's get our brains warmed up with a quick riddle. Can you solve it?

What well-known phrase is represented by the graphic below?



RESPECT

RESILIENCE

RESPONSIBILITY

EXCELLENCE

AMBITION

S1 Inter-house Football Results

Well done to all the S1's who took part in inter-house football last week.
Over 3 days of competition the final table looked like this:

Team	G	W-D-L	+	-	±	P
Hamilton	3	2-0-1	6	2	4	6
Graham	3	1-1-1	5	5	0	4
Douglas	3	1-1-1	5	7	-2	4
Bruce	3	1-0-2	1	3	-2	3

A big well done also to Park School who fielded a team on every day,
and thanks to Chris Black, Zackary Woods and Amyleigh Brown for their
help with the organisation.

Inter-house Points Table

After 2 events the inter-house table now looks like this:

House	Points Total
Graham	50
Bruce	40
Douglas	30
Hamilton	30

The next event will be S2 Inter-house Football taking place the **week beginning Monday 20th November.**

A Message to All S4 Pupils

On the back of our excellent trip to Flip Out, the planning will start soon for our next S4 trip to **M & D's Theme Park** at Strathclyde Country Park.

This will take place early in 2024 and again, attendance at it will be based on displaying the School Values around the school.

Keep working hard!



RESPECT

RESILIENCE

RESPONSIBILITY

EXCELLENCE

AMBITION

BIG DATA

Q&A WITH A DATA APPRENTICE

💡 Apprenticeships for School Leavers 💡

Are you wondering how to kickstart your career in data science, analytics, or any other data-related field?

If so, our upcoming online webinar is just what you need to embark on your data-driven journey!

Hear directly from an apprentice who has experienced the journey firsthand to gain insights into what a data apprenticeship truly entails...



23 November
2PM



Mo Nassor
Data Analyst



SIGN UP NOW

Email - heather.wheatley@qa.com

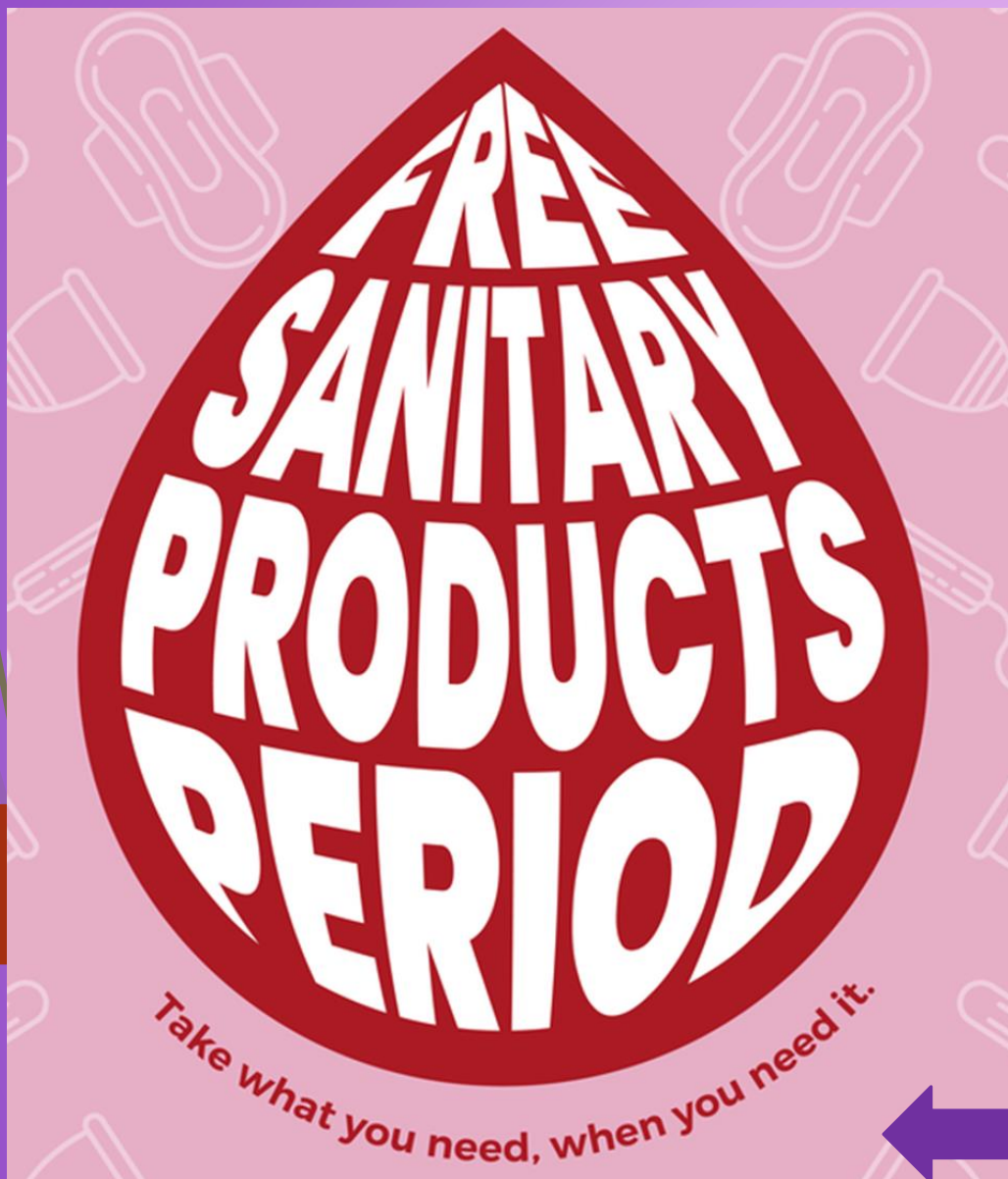
RESPECT

RESILIENCE

RESPONSIBILITY

EXCELLENCE

AMBITION



Free Sanitary Products
are widely available
throughout the Campus.

Look out for this image for product locations





Prelim Fear? We Can Help!

S4 Study Skills Support: Monday 13 November at lunchtime – bring your lunch!

FO89 English Mr Crosbie's room

- ✓ **See examples of good study plans and effective ways to study.**
- ✓ **Get some coaching from pupils who have experience.**
- ✓ **Stop worrying!**

See you there!

This event is aimed at S4 but S5-6 pupils are also welcome.

Grange Academy Prefect Study Skills Team

ALL this week – 1.30pm every day

Staff Vs Pupils Sports games

Bring a small donation to watch



Monday 13th – Volleyball – PE games hall
Tuesday 14th – Basketball – PE games hall
Wednesday 15th – Dodgeball (Pay and you Play) – PE games hall
Thursday 16th – Football- Astro



Grange Academy's Christmas Fayre

SATURDAY 25TH NOVEMBER 2023

10-2PM

GRANGE CAMPUS, BEECH AVENUE ENTRANCE

- ❄️ **Christmas Shopping with 40+ stalls**
- ❄️ **Live Festive Music**
- ❄️ **Carols from our Feeder Primaries**
- ❄️ **Pupil Christmas Crafts**
- ❄️ **Hamper Raffle**
- ❄️ **Christmas Inflatables**
- ❄️ **Christmas Art Installation designed by Grange Academy**
- ❄️ **Bottle Stall / Chocolate Stall**



£3 per adult, kids go free

Free tea/coffee/shortbread on arrival

On ParentPay or Pay at the door





GRANGE CHRISTMAS FAYRE

SATURDAY 25TH NOVEMBER 2023

We are looking for the following items for Christmas Fayre stalls:

- Preloved Christmas Jumpers
- New Christmas Wrapping
- Children's Books

Donations can be handed into the library, the office or Mrs Morton's room (F006).





THE GREAT CHRISTMAS RAFFLE

WE ARE LOOKING FOR DONATIONS FOR THE CHRISTMAS RAFFLE.



Donations can be handed into the office,
the library or Mrs Morton's room (F006)



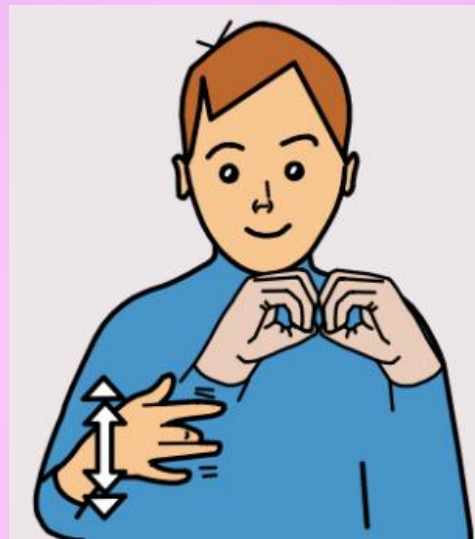
Christmas Fayre Musical Performances

If you would like to sing or play something festive at the Christmas Fayre on Saturday 25th November, please speak to Mr Ramsay.



BSL Recap

Can you remember the sign from the last bulletin?

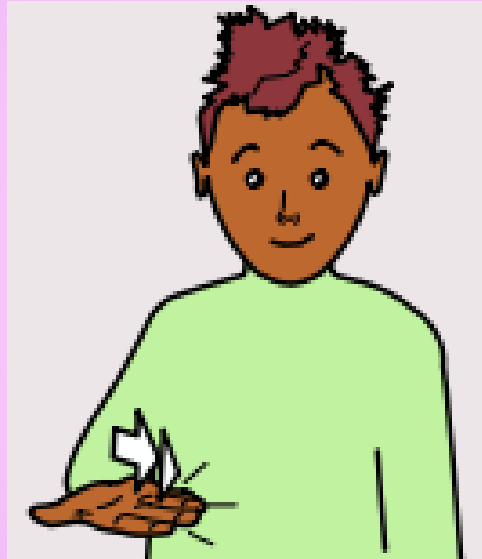


Biology

Use both hands to make two circles that look a bit like a B lying down.
Then touch near your shoulder with your middle finger and move it up and down (this is the sign for life).

BSL Sign of the Week

Business



Hold your hand with your palm facing up.
Tap the side of your hand against your
waist.

RESPECT

RESILIENCE

RESPONSIBILITY

EXCELLENCE

AMBITION

Weekly puzzle

Did you get it right?

FGH^I JKLMNOP^Q RST

High IQ



Have a great week, Grange.

Work hard.

Be kind.

RESPECT

RESILIENCE

RESPONSIBILITY

EXCELLENCE

AMBITION