



GRANGE ACADEMY WEEKLY BULLETIN

21st November 2022

WEEKLY PUZZLE

Let's get our brains warmed up with a quick riddle. Can you solve it?

What well-known phrase is represented by the graphic below?



**ABCDEFGHI
JKLMNOPQ
RST_VWXYZ**

RESPECT

RESILIENCE

RESPONSIBILITY

EXCELLENCE

AMBITION

POLICE SCOTLAND YOUTH VOLUNTEERS INFORMATION EVENING

Date: Thursday 1st December

Time: 7pm – 8pm

Venue: Games Hall, Dumfries House
Estate, Cumnock

This is a meeting for all 13 to 15 year olds who have an interest in finding out about different aspects of policing in Scotland, and for those who may not wish to join the police, but who are keen to help out by volunteering in the local community.

PSYV Cumnock is a disciplined, uniform youth group, happy to help our communities.

If this is something that you think you may be interested in, please come along to the meeting with a parent/carer, to meet us.



RESPECT

RESILIENCE

RESPONSIBILITY

EXCELLENCE

AMBITION

PANTO STARS!

Wishing the best of luck to these pupils who are performing in Snow White at the Palace Theatre.

They have been working incredibly hard to keep up with all their school work while also rehearsing every day after school.

Break a leg, everyone!



Alix Hartley - 4D2
Lauren Batty - 3G2
Rachel Ross - 2D1
Freya Lee - 2D1
Harriet Harper - 2B2
Emily Cummings - 2B2
Eilidh Cooke - 2B2



RESPECT

RESILIENCE

RESPONSIBILITY

EXCELLENCE

AMBITION

BGE HOUSE CAPTAINS APPLICATIONS

Applications are now open for the role of BGE House Captain.

This is the first time we have offered this exciting opportunity for S1-3 pupils to be part of the pupil leadership team in the school.

Scan the QR code to complete the application form or ask your guidance teacher for a paper copy. Forms should be in no later than Friday December 2nd.



RESPECT

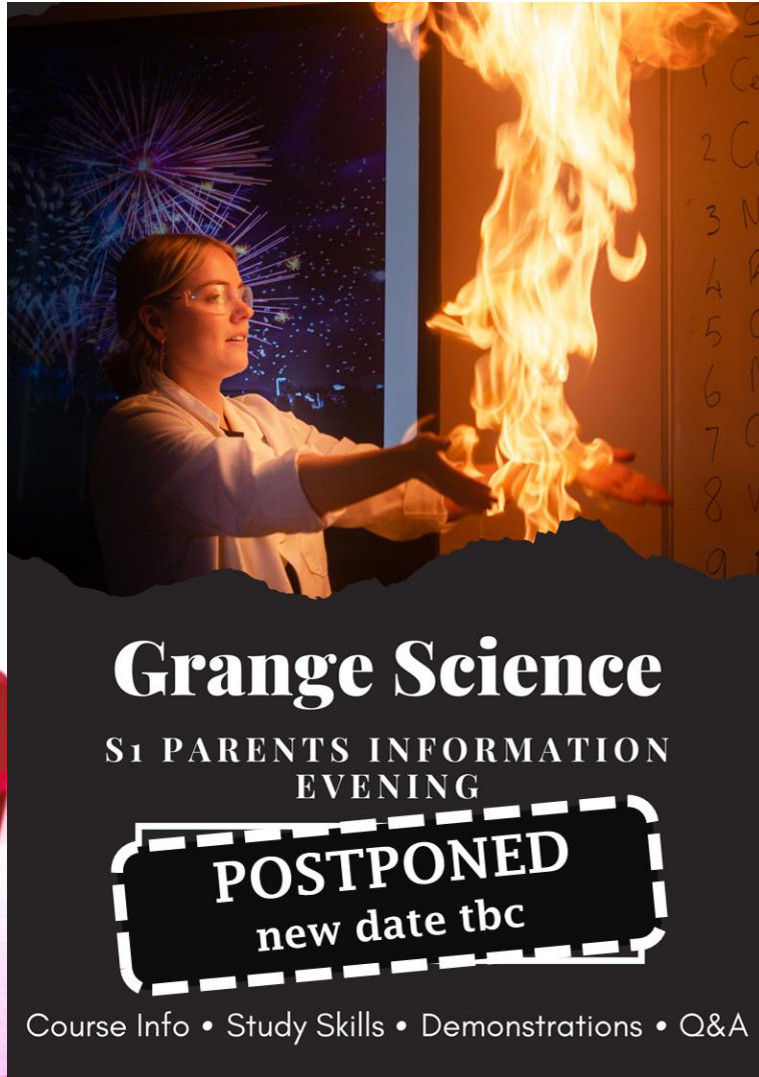
RESILIENCE

RESPONSIBILITY

EXCELLENCE

AMBITION

PARENTS INFORMATION EVENING - SCIENCE



Unfortunately, this event has been postponed.

A new date will be announced as soon as possible.

RESPECT

RESILIENCE

RESPONSIBILITY

EXCELLENCE

AMBITION

ANDREW LLOYD WEBBER'S **SCHOOL of ROCK** THE MUSICAL

If you wish to audition for the school show, please sign up by putting your name and class on the noticeboard in the Music department so the material can be copied for you.

We are also looking for musicians (piano players, guitarists, bass players and drummers) who may wish to be considered to play, either on stage or as part of the band in the pit.

Audition day and time will be announced in due course.

RESPECT

RESILIENCE

RESPONSIBILITY

EXCELLENCE

AMBITION

MANDARIN SENIOR LUNCH CLUB

中文游戏俱乐部

Monday 1:20-1:50

Mandarin senior students

@G158





FORMULA 1 CLUB

There will be:

- Kahoots
- Talk about drivers/fav drivers
- Recent highlights/wins
- Share ur thoughts about it
- Fav teams
- Posters

- Formula 1 club
- Wednesday lunchtime
- F080 (English)

The person in charge of it will be Emily Martin (S6)

Come along if you are interested in F1, or want to get into it !

RESPECT

RESILIENCE

RESPONSIBILITY

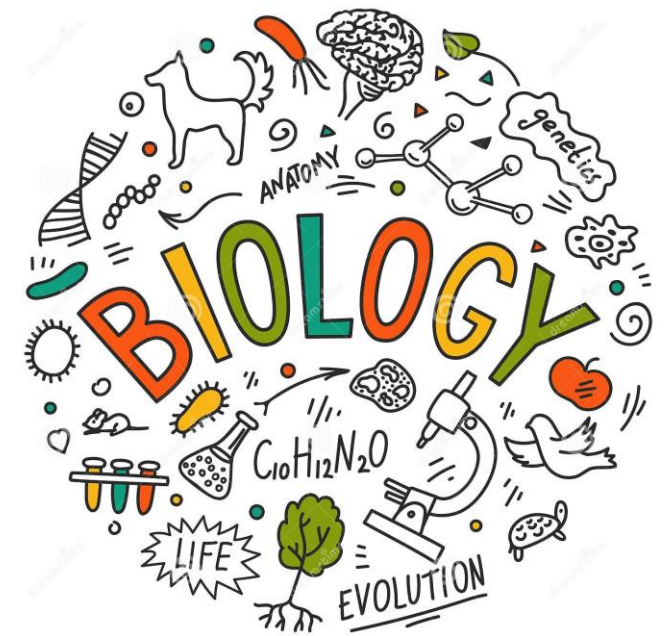


NAT. 5 BIOLOGY HELP

Aayush Punshi (S4) will be providing supported study for National 5 Biology in Miss Baird's classroom (S012) on Wednesday lunchtimes.

He will be there all through lunch to help anyone who may need a little extra support in Biology, or for anyone who may need a hand with their homework.

Pupils are welcome to go along after their lunch, or bring their lunch with them.



U14s FOOTBALL



Congratulations to our under-14s team who beat Irvine Royal Academy with an incredible score of 17 - 0 last week!

Goals were scored by: McKenzie (6), Aaron Raeside (2), Harry Adams (2), Harry Falconer (2), Daniel J, Findlay A, Ben K, Louie and Arran Swift

Mr Adams' Player of the Match: McKenzie Anderson

Referee's Player of the Match: Aaron Raeside

RESPECT

RESILIENCE

RESPONSIBILITY

EXCELLENCE

AMBITION

U14s FOOTBALL

The team then went on to win 8 - 1 against Loudoun Academy in their following game!

Goals from: Harry A, Lewis Rankin (2), Zander P (2), Arron R, Evan Smith and Harry F.

Man of the Match: Evan Darbrough

Mr Adams' Player of the Match: Zander P

Jack's Player of the Match: Ben Kean



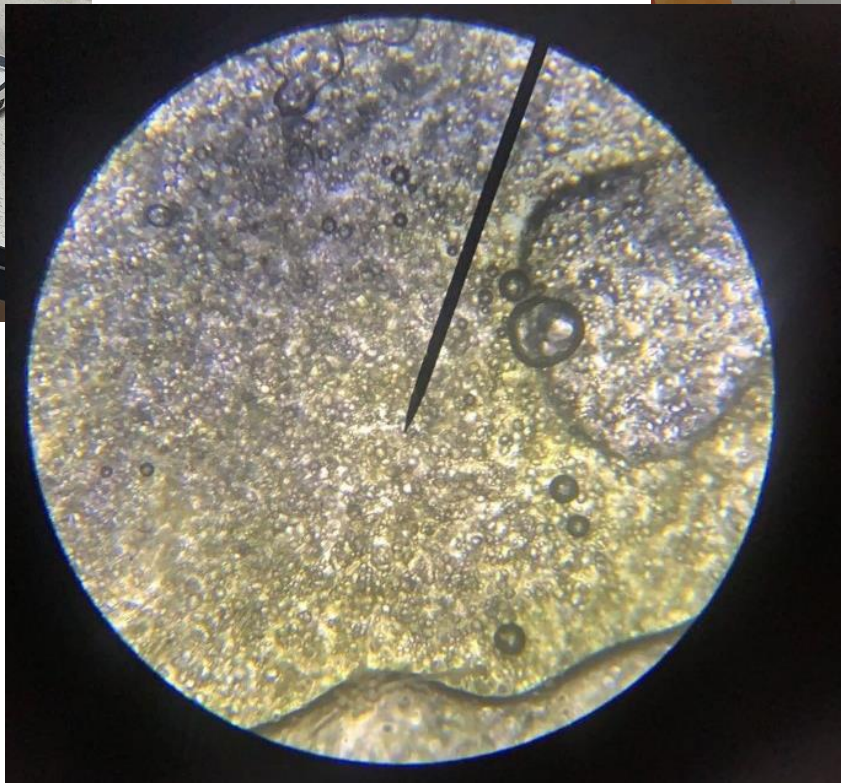
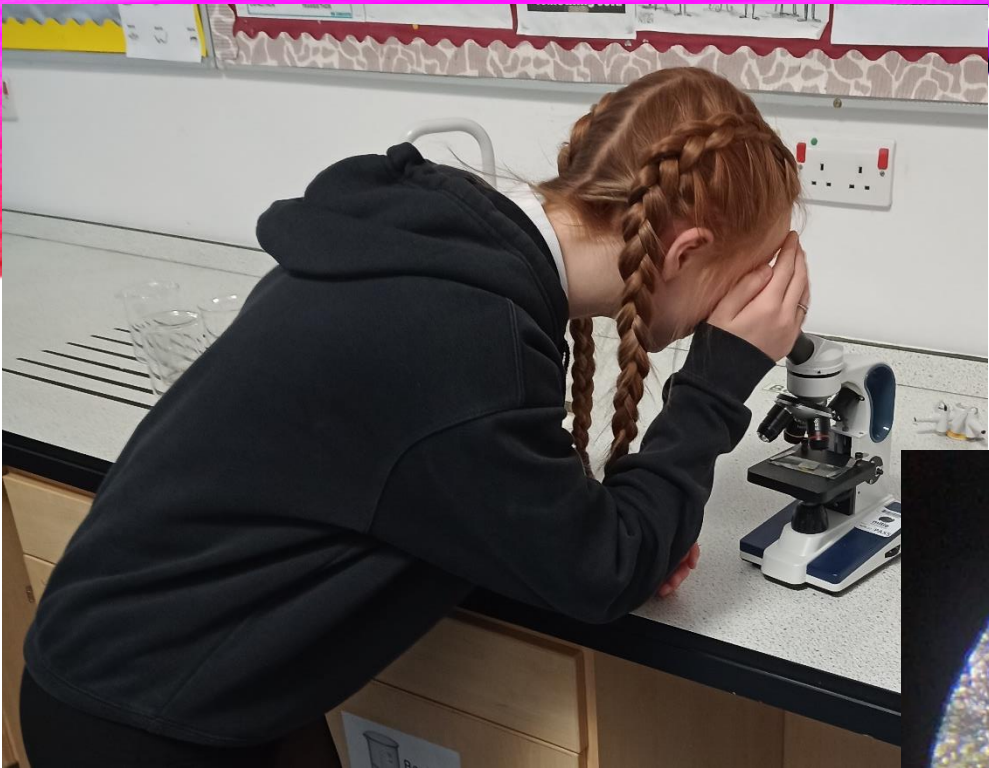
RESPECT

RESILIENCE

RESPONSIBILITY

EXCELLENCE

AMBITION



Mr McPherson's 2P6 Science class were looking at thin slices of potato under the microscope.

HOMework CLUB

Every **Tuesday and Wednesday** after school, there will be a homework club in the library.

This club is available to **all pupils**, and will take place between 3.40pm and 4.40pm.

Come along and get help from teachers, or just enjoy a quiet place to work.



RESPECT

RESILIENCE

RESPONSIBILITY

EXCELLENCE

AMBITION

STUDY CAFÉ – BARISTA SERVICE



There will also be a barista service for pupils attending study cafe.

The drinks will be at a reduced rate of £1.

Pupils can queue up outside the barista room if they would like a hot drink.

This will start from Thursday 17th onwards.

SUPPORTED STUDY

A reminder of the supported study sessions available to pupils in S4 – S6

Monday				
Subject	Level	Teacher	Time	Location
Biology	Higher	C Bell	8:00 – 8:35	S023
Chemistry	Advanced Higher	AL Bremner	8:00 – 8:35	S008
Mandarin	National 5 and Higher	C Jiang	1:20 -1:50	G158
Practical Cookery	National 5	J McDowall	lunchtime	F072
Biology	National 5	L Dolan	3.35 - 4.30	S028
Design and Manufacture	National 5	C Cuthbert	3:35 – 4:35	G175
Physics	All levels	B McPherson	3.35 - 4.30	S013
Tuesday				
Physics	Higher	K Williamson	8:00 - 8:35	S026
Chemistry	National 5	L Ogilvie	8:00 - 8:35	S014
Chemistry	Higher	AL Bremner	8:00 – 8:35	S008
Graphic Communication	Higher and S5 N5	C Cuthbert	3:35 – 4:35	G175

SUPPORTED STUDY

A reminder of the supported study sessions available to pupils in S4 – S6

Wednesday				
Biology	Higher	L McLean	8:00 - 8:35	S009
Biology	National 5	C Bell	8:00 - 8:35	S023
Chemistry	Higher	L Ogilvie	8:00 - 8:35	S013
Biology	Advanced Higher	H Marshall	1.20 – 1.50	S028
English	Higher	G Crosbie	3.40 -4.40	F089
Music	National 5	A Gemmell	3:40 - 4:40	F045
Thursday				
Biology	National 5	E Johnston	8:00 - 8:35	S027
English	National 5	P Brennan/G Allan	3.40 – 4.40	F084
Physics	National 5	K Williamson	3.35 – 4.30	S026
Friday				
Environmental Science	Higher	L Ogilvie	8:00 - 8:35	S013
Biology	Higher	M Hagan	8:00 - 8:35	S012
Biology	National 5	J Baird	8:00 - 8:35	S009

CHRISTMAS FAYRE 2022



The Christmas Fayre is taking place **this weekend!**

🎄 Saturday 26th November 10 - 2pm 🎄

Tickets are available on ParentPay, or you can choose to pay at the door.

We hope to see you there!

RESPECT

RESILIENCE

RESPONSIBILITY

EXCELLENCE

AMBITION

Grange Academy Parent Council Christmas Fayre



Saturday 26th November
10am - 2pm
Grange Campus

- ❄ Christmas Shopping with over 38 stalls
- ❄ Live Festive Music
- ❄ Carols from our Feeder Primaries
- ❄ Santa's Grotto & Photo booth
- ❄ Pupil Christmas Crafts
- ❄ Hamper Raffle
- ❄ Christmas Inflatables
- ❄ Christmas Art Installation designed by Grange Academy
- ❄ Bottle Stall / Chocolate Stall

£3 per adult, kids go free

Free tea/coffee/shortbread on arrival

On ParentPay or Pay at the door





On the 12 days before Grange Academy's Christmas Fayre, the school's parent council and 56 little elves (pupils) were looking for donations of the following items from all of the Grange Community



All the donations can be handed into the school office or the Christmas box in the Library from the 1st of November 2022



1. Chocolate Item
2. Alcoholic or non Alcoholic Drink
3. Toiletries
4. Nearly New Christmas Jumpers
5. Christmas Decoration
6. Children's toy
7. Selection Box or Sweetie
8. Christmas Cards
9. Christmas Wrapping paper / Boxes or Bags
10. Christmas Games
11. Books
12. Christmas cakes/ puddings
13. an extra raffle prize



Tombola Donations

We need your help.

Can you help with a prize for the schools Chocolate Tombola?
Please drop of your donation to the school office
by Wednesday the 23rd November.



Chocolate TOMBOLA



Baking Donations

Calling all bakers!

We are looking for donations for our Baking Stall at the Christmas Fayre. From brownies, cupcakes and (everyone's secret favourite) the cornflake cake!

All donations gratefully received.

Please hand into the school office by Friday 25th of November



Tombola Donations

We need your help.

We need bottle donations to help with the schools Bottle Tombola?

Please drop of your bottles to the school office by Wednesday the 23rd November.



Thank you!



RESPECT

RESILIENCE

RESPONSIBILITY

EXCELLENCE

AMBITION

CAMPUS CHRISTMAS CONCERT



This event will take place on Tuesday
20th December at 7pm.

Tickets will be available soon. If you wish
to be involved, please speak to Mr
Ramsay.

RESPECT

RESILIENCE

RESPONSIBILITY

EXCELLENCE

AMBITION

Christmas card competition

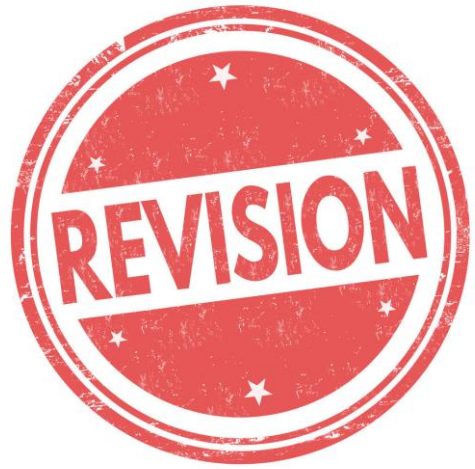
The Modern Languages department invites all pupils to take part in our Christmas card competition.

Design a card showing Christmas traditions in another country. This can be in any foreign language.

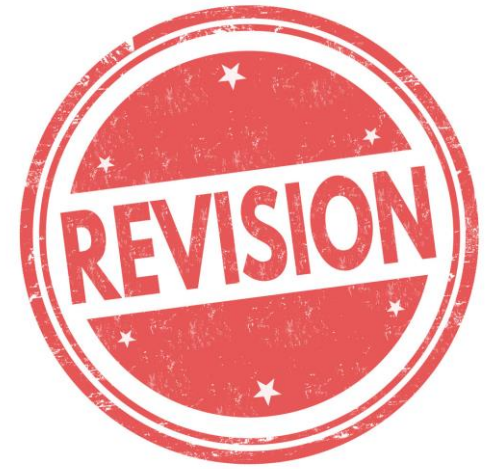
Cards should be hand designed on A4 paper, but you can use any materials you wish.

£10 voucher for the Forum for the winner!

Good luck!



BSL SIGN OF THE WEEK



Let's do a recap!

Can you remember the signs for:

- **Excellence**
- **Ambition**

RESPECT

RESILIENCE

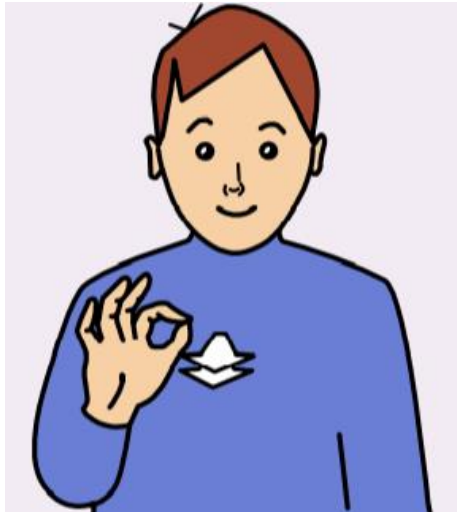
RESPONSIBILITY

EXCELLENCE

AMBITION

BSL SIGN OF THE WEEK

“Excellence”



Make a circle with your pointer finger and thumb, and move your hand forward.

“Ambition”



Hold up the pointer finger of one hand and move your other hand towards it, to touch it. This is like aiming for a target and hitting it.

WEEKLY PUZZLE

Did you get it right?

ABCDEFGHI
JKLMNOPQ
RST_VWXYZ

Missing You

RESPECT

RESILIENCE

RESPONSIBILITY

EXCELLENCE

AMBITION

HAVE A GREAT WEEK, GRANGE.

WORK HARD.

BE KIND.

RESPECT

RESILIENCE

RESPONSIBILITY

EXCELLENCE

AMBITION