

# Grange Academy Science Study Skills

# What do students need to be successful in Science?

- regular homework & consolidation tasks
- reflecting on feedback to improve
- independent home learning using all available resources

# What support is offered in school?

- **Homework** - varied and regular tasks issued
- **Supported study**
- **'Open door policy'** - help and advice available from all subject teachers, doesn't have to be your class teacher
- **Assessments**- regular and meaningful summative assessments across all 3 units and ongoing formative assessment in class
- **Tracking** - rigorous and regular monitoring of progress

Day	Time	Subject	Level	Room
Monday	8.00 – 8.35am	Biology	Higher	S023
	8.00 – 8.35am	Chemistry	Adv H	S008
	3.35 - 4.30pm	Biology	National 5	S028
	3.35 – 4.30pm	Physics	All levels	S013
Tuesday	8.00 – 8.35am	Physics	Higher	S026
	8.00 – 8.35am	Chemistry	National 5	S014
Wednesday	8.00 – 8.35am	Biology	Higher	S009
	8.00 – 8.35am	Biology	National 5	S023
	8.00 – 8.35am	Chemistry	Higher	S013
	1.20 – 1.50pm	Biology	Adv H	S028
Thursday	8.00 – 8.35am	Biology	National 5	S027
	3.35 – 4.30pm	Physics	National 5	S026
Friday	8.00 – 8.35am	Env Science	Higher	S013
	8.00 – 8.35am	Biology	Higher	S012
	8.00 – 8.35am	Biology	National 5	S009
See Dr Telfer	See Dr Telfer	Physics	Adv H	S024

# Assessment Dates

- You are given a week of notice, at least, of upcoming assessment dates
- Use this information to begin formulating a plan of how to best prepare for the assessment
- If you need help organising your study plan, speak to your class teacher

# How can parents/carers offer support?

- Information is issued to parents/carers on your reports
- Your parents/carers can access homework and test dates consult on Satchel One
- Supported study dates were issued on the app
- Share your study plan and ask your parent/carers to check in and make sure it's adhered to
- Share assessment and homework scores so they can support your progress

# Course Structure

National 5

3 units

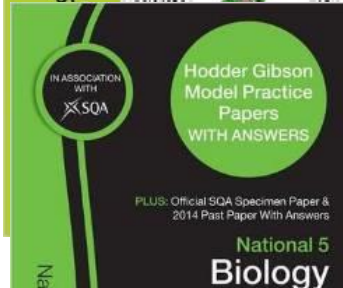
Final exam with two types of questions (MCQ and structured)

Higher

3 units

Final exam with two types of questions (MCQ and structured)

# Home Learning Resources



Grange Academy

Higher Biology

Unit 1

DNA and the Genome

Summary Notes

Intron 1

Intron 2

Intron 3

All questions appropriate from 2006 to current. There are several similar questions in some key areas. In these cases it would be useful to tackle one, and then come back to tackle a similar one later to check that you have taken on any problems identified in marking the first one.

Question	Source	Unit/KA	Mark
Write notes on i) The structure of DNA (4) ii) DNA replication and its importance (6)	H2009	DG1&2	
Describe DNA under the following headings (9) DNA of DNA be used where appro der the following hea	CfEH spec	DG1&2	

Evans<sup>2</sup>  
CHEM WEB

Higher

Name.....

Mark /19

1. Types of single gene mutation are given in the list below.

1 substitution

2 insertion

3 deletion

Which of these would affect only one amino acid in the polypeptide produced?

satchel:

Quizlet



Grange Academy

National 5 Biology

Unit 1 Cell Biology

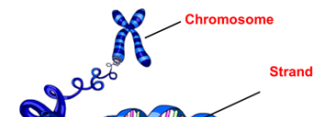
Learning Intentions



Problem Solving

Questions

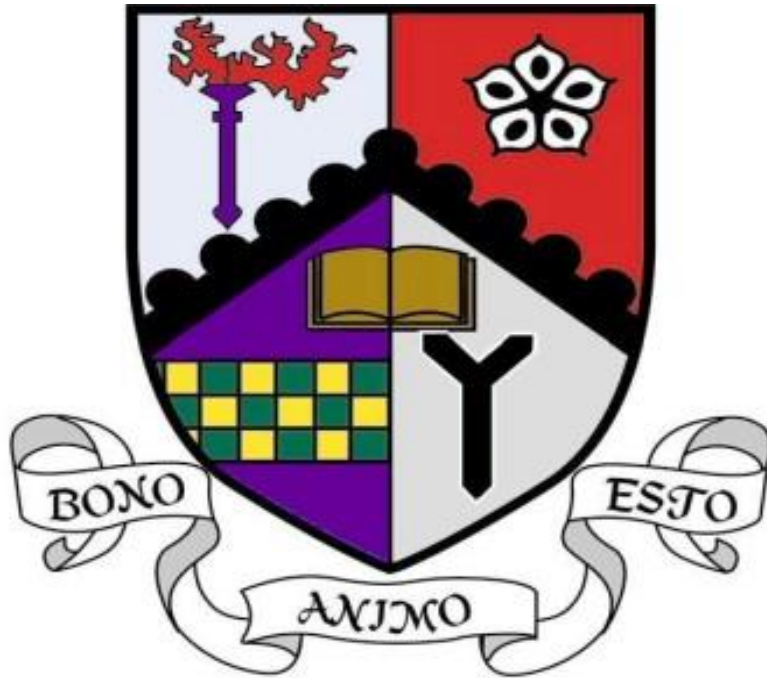
SharePoint





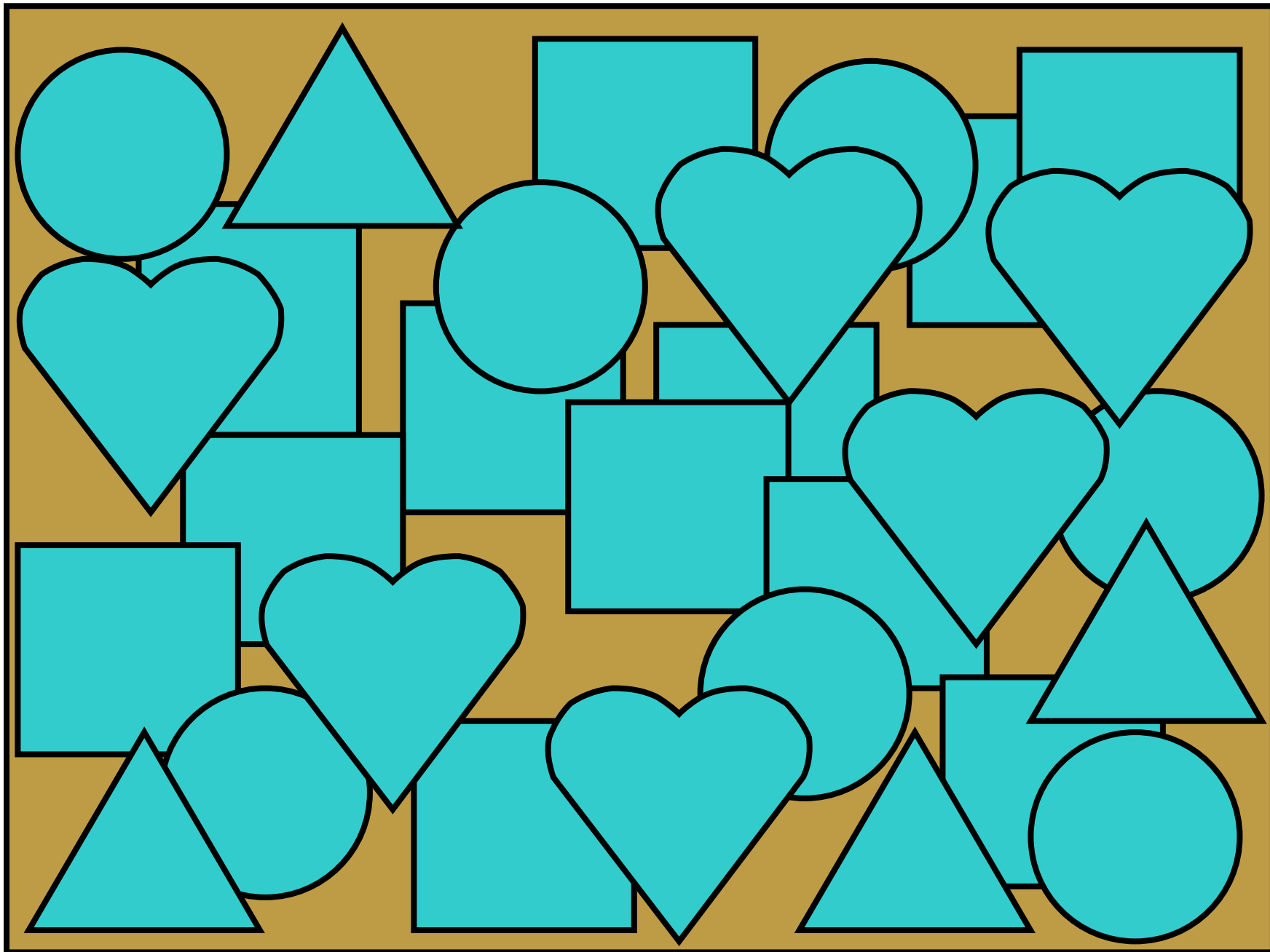
# Independent Learning Study Skills

- Make study cards (CRAM)
- Make mind maps
- Create your own summary for each key area/unit
- Create a glossary of key terms
- Teach someone else
- Supported study
- Highlight key pieces of information in their notes
- Use SQA course support notes to consolidate their knowledge
- Show My Homework app
- Past paper practice
- Use online resources such as CRAM, Evans2Chem, Quizlet, Kahoot, Bitesize, Oronsay.

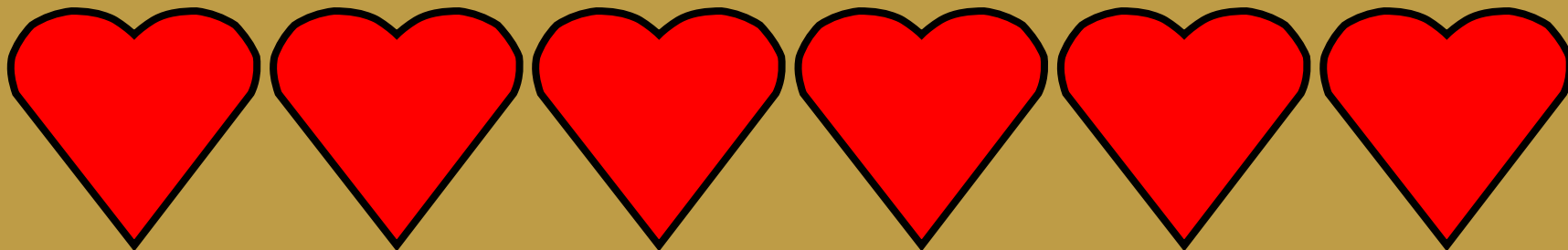
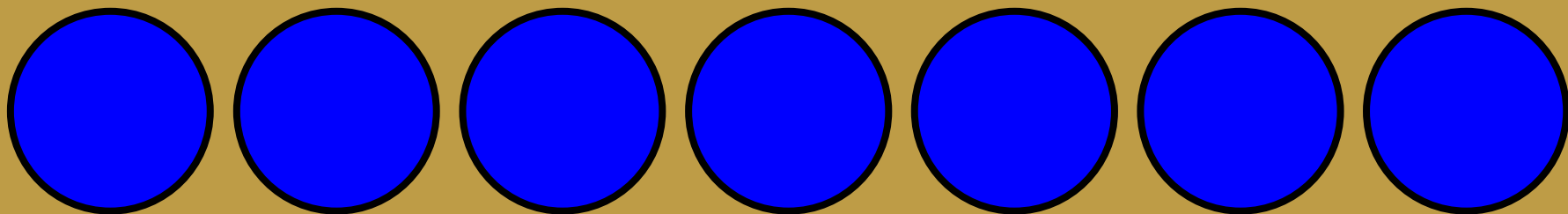
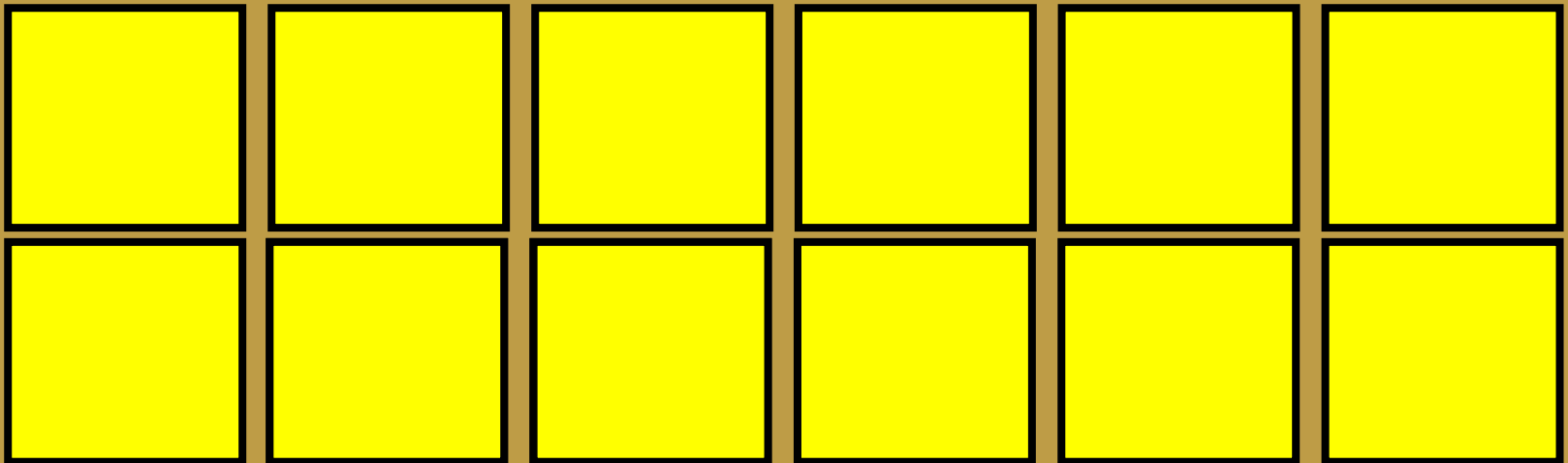


# Mind Mapping

How many squares can you see?



How many circles can you see?



- Organised information is much easier to use and to access. This is where mind mapping comes in useful.



# What is a Mind-Map?

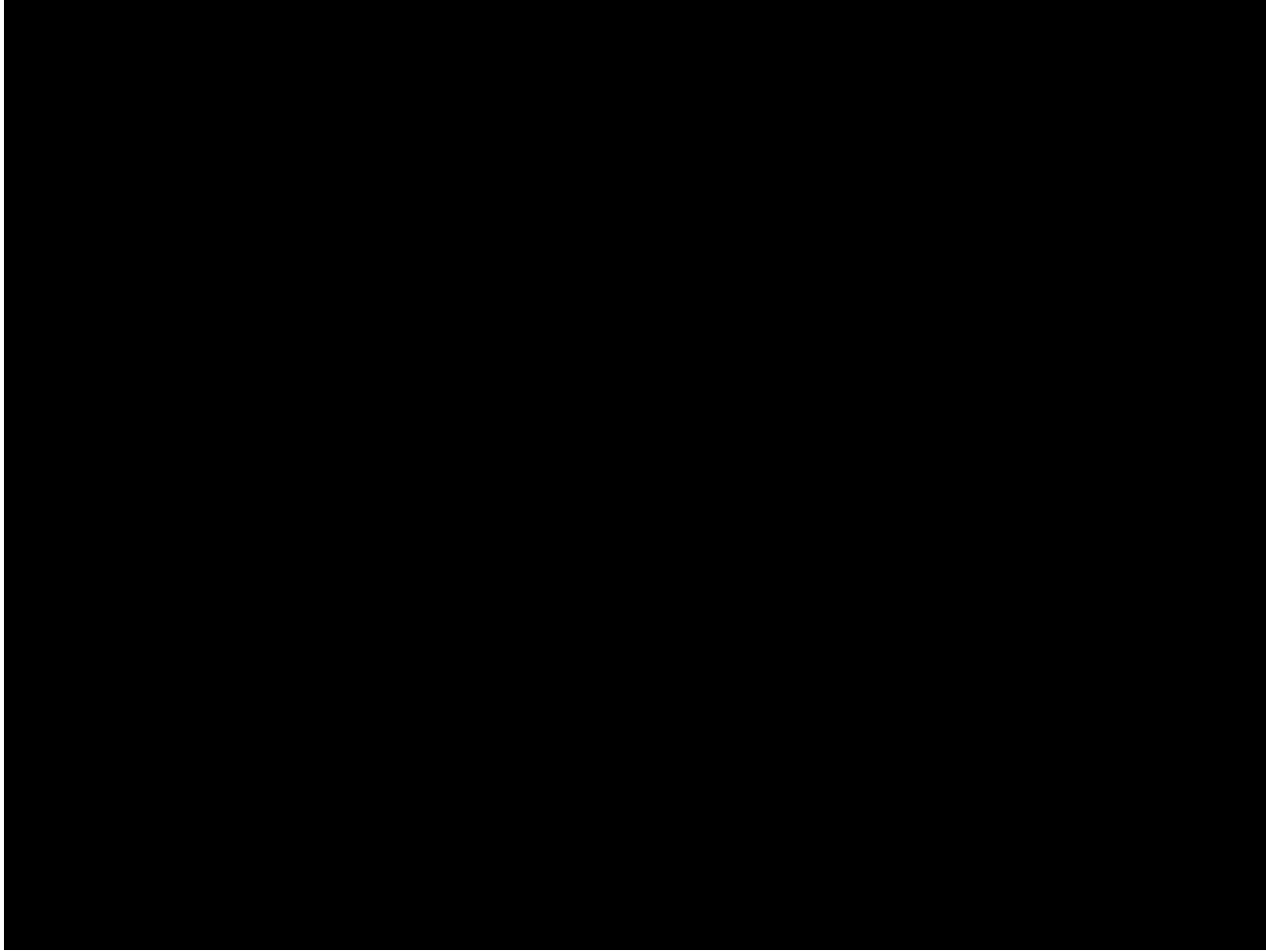
- A mind map is a diagram used to visually organise information. A mind map is often created around a single concept, drawn as an image in the centre of a blank landscape page, to which associated ideas and information are then added.



- An effective mind map should present information in a clear, logical manner, and it should also help to illustrate links within a subject.



# Mind Maps





**Study Cards**

# What are Study Cards?

- Pupils select information from their notes or text and separate information on to study cards.

A: Lymphocytes

Q: What type of  
white blood cell  
produces antibodies?

- For example:
- A term can be written on one side and the definition on the other.
- An event can be written on one side and the date it took place on the other.
- A word can be written on one side and its meaning on the other.

# Study Cards

