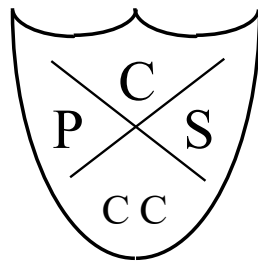


Crosshouse Communication Centre Parent Information Booklet

CROSSHOUSE
PRIMARY SCHOOL



&
COMMUNICATION
CENTRE



April 2023

Welcome!

Hello everyone! We are really looking forward to welcoming you to Crosshouse Primary School and Communication Centre in August. This booklet will give you some information about the school and the Communication Centre including our new enhanced classes. We have also put some photographs in here so you can take a look at some areas inside the school and see some of the people you will meet.

At the moment we are based in Kirkstyle Primary School in Kilmarnock as our school in Crosshouse is being refurbished and having a new extension built. We hope to move back there after the Summer once the work is complete.

I can't wait to meet you all very soon and, if anyone has any questions then please do not hesitate to get in touch.

Mrs Thomson



Who are we?

Crosshouse Communication Centre

Crosshouse Communication Centre is a facility for primary children with significant social communication disorders, including autism. The Centre is part of a mainstream primary school, allowing children to access all the educational opportunities to meet their specific needs.

In August 2022, we are delighted to have two additional enhanced classes. The focus will be on a highly differentiated and elaborated curriculum, including a sensory focus, learning through play, and developing social and emotional skills as part of the pupils' learning plans, at a pace suited to their individual needs.

The main aims of the centre are:

- To provide a safe and stress free environment which encourages independence in life and work skills.
- To promote, by a variety of methods, functional communication and social interaction between pupils.
- To assess accurately the strengths and needs of each pupil, they will have a Child's Plan which will inform teaching priorities within areas of specific need.
- To provide staff with opportunities to increase their skills and knowledge of communication difficulties through in-service courses and sharing of expertise and good practice.
- To ensure pupil access to the Curriculum for Excellence, using a range of teaching approaches and resources and taking account of the learning style of the individual.
- To apply a multi-disciplinary approach to the assessment, planning and delivery of the curriculum as indicated by the needs of the child.
- To provide planned opportunities for integration/inclusion with mainstream peers in a variety of contexts.
- When and where appropriate, to facilitate each child's inclusion within his/her local mainstream primary school.
- To establish and maintain a close partnership with parents which will benefit all parties and ensure continuity of support for the child.
- To ensure that all pupils are received as valued and respected members of Crosshouse Primary School, the wider community and the society to which they belong. Our practice in Crosshouse Communication Centre reflects our commitment to these aims.



Parents as Partners

The staff in the centre recognise and appreciate the important part parents play in the education of their children. You are our most important resource in terms of the unique knowledge and understanding you have of your child. We wish to promote a genuine partnership with you where we can work together to make your child's time at the centre as purposeful and stress-free as possible. To facilitate this end, we hope to include you in the following ways:

- **Parents' evenings.** These meetings take place in October and March each session and enable you to meet with your child's teacher and see the work your child has been completing. During these meetings, there will be an opportunity to discuss your child's Child's Plan and discuss targets set in addition to new targets. You will be given an appointed time which is usually around 30 minutes. At present, appointments are carried out via telephone.
- **Informal reviews/meetings.** These can be requested and negotiated by either party should the need arise. Everyone involved with your child is invited to attend and it provides a forum within which progress is reported, concerns aired and next steps discussed.
- **Home/School Communication.** Every child will have a Learner Journal which parents can sign up to. Through this platform, we welcome any information about your child's activities at home as this enables us to cue him/her into contributing during 'news time'. Please don't feel that you have to message every day but it is very helpful if you can send photos or a short blurb which may prompt communication in class, especially after a holiday or weekend. The class teacher will post daily a short 'class story' detailing a summary of the school day.
- **Telephone link.** We are happy to talk with you on the phone but would request that where possible you call before or after the working day.
- **School meetings/Programmes.** Arrangements can be made for a member of staff to phone a parent to discuss ways they can best support their child at home. This is particularly important when the child is being encouraged towards independence in a life skill area such as toileting or dressing/undressing when consistency of approach is essential. Mutual co-operation in such matters is essential if the child is to achieve success.
- **Transport.** You will be informed before the start of term which contractor will be transporting your child to and from school and the approximate pick-up and drop off times. If for any reason your child is unable to attend school, you are required to inform the company of this and again when your child will be returning to school.





This is Mrs Gaitens. She is the Head Teacher of our school.

She loves to come and say hello to us and loves to play music and have fun in the playground.

Mrs Gaitens loves animals and has a dog and three guinea pigs.

My name is Mrs Thomson and I am the Depute Head Teacher for the Communication Centre.

You might see me a lot in the school and in the playground or in my office.

I love to spend time with my two boys. They both like to play electronic games but when it is a sunny day, we like to go to the park and have fun together.



These are some of the teachers you might meet in the infant department in the Centre.



This is Mrs McMillan. She loves spending time with her family. She is learning to play the keyboard. She goes to yoga and swimming to keep fit.

This is Mrs Coulter. She likes to wear bright colours. At home, she loves to have lots of fun with her three children. She enjoys keeping fit and knitting.



This is Mrs Duncan. She likes to spend time at home with her girls and going for walks. She also loves music and goes to lots of concerts.

This is Mrs Johnson. She loves to spend time in the garden with all her pets.



These are the teachers you might meet in the middle stages of the Centre.



This is Mrs Wilson. She loves owls and collects little owl toys. She also loves to do Tai Chi and teaches it to the children in the school.

This is Miss Ronald. She loves to go walking when she isn't at school, especially up big hills!



This is Mrs Scott. She likes reading and has set herself a challenge to read one book a month. She also likes going shopping and going for long walks.

This is Mrs Moore. She is currently our McCrone teacher. This means that she goes into lots of different classes to give teachers their planning and preparation



**These are the teachers you might meet
in the upper department of the Centre.**



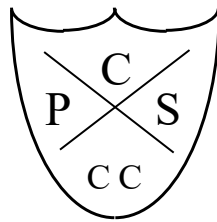
This is Miss Bell. She loves to spend time with her family. She likes to go to the beach and go for walks.

This is Miss Paterson. She loves spending time with her baby daughter. She also loves the water and actually teaches people to paddleboard when she isn't at school!



Mrs Mitchell is our P7 teacher and loves to exercise and take her dog, Rocky, for lots of walks with her family.

CROSSHOUSE
PRIMARY SCHOOL



&
COMMUNICATION
CENTRE



Our school uniform

At Crosshouse Primary and Communication Centre, we all wear the same uniform.

We have green sweatshirts. Some have the school badge on them. We can wear these over a polo shirt or shirt. Some children like to wear a school tie. We can wear black or grey trousers, skirts or pinafores.





Our School Building

We have just moved back into our newly refurbished school in Crosshouse. We have a lovely building now with a large gym, a GP room, a library and a big playground with a football pitch in it.



These are some of the things you might need to bring to school with you.



A school bag, big enough to fit all your things in.



A snack to have at playtime.



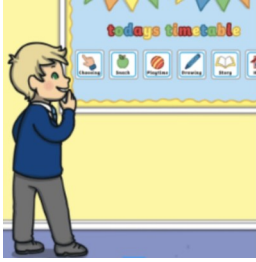
A packed lunch box if you choose to have a lunch from home.



A water bottle with water or diluting juice.



Don't forget to label everything!!



What does a typical day look like?



8.50-10.10

Walk a mile and literacy activities

(Lots of play based and practical activities in the infant dept.)

10.10-10.30

Playtime

10.30-12.00

Numeracy activities

(Lots of play based and practical activities in the infant dept.)

12.00-12.50

Lunch time

12.50-3.00

Topic and other practical activities



When you come to school in the morning...



You might come in a taxi. There might be other children in your taxi and there will be a driver and another person, called an escort, to look after you.

Your parents might choose to bring you to the school too.



There will be a special area in the car park where you will be dropped off each morning and picked up at the end of the day. An adult will wait with you until your teachers come out to get you. They will bring you out at the end of the day to get you safely to your taxi or grown up.



Our playground...



In our infant playground, we have lots of fun with our classroom assistants. We have lots of toys, games and loose parts materials to play with. We can ride the bikes and scooters and, if we want to, we can sit and draw and do a quiet activity.






We use the big playground to do the daily mile. It has a football pitch and lots of climbing things for us to use.



At lunchtime....



PRIMARY MENU 2022-23

WEEK ONE				
MONDAY	TUESDAY	WEDNESDAY	THURSDAY	FRIDAY
Lentil soup ✓	Chunky vegetable soup ✓	Fresh tomato soup ✓	Lentil soup ✓	Chunky vegetable soup ✓
Steak mince with a pastry top & creamy mashed potato	Creamy chicken pasta	Quorn lasagne & garlic bread ✓	Indian style chicken biryani	Fish goujons & chips
Roasted vegetable couscous ✓	Homemade cheese & tomato pizza ✓	Fresh chicken fillet in a bun with potato wedges	Vegan pasta in a fresh tomato sauce ✓	Vegetable fingers & savoury rice ✓
 Super Tattie's Tasty Tray Cheese toastie ✓	 Super Tattie's Tasty Tray Tuna mayo soft roll	 Super Tattie's Tasty Tray Cheese & tomato panini ✓	 Super Tattie's Tasty Tray Premium pork sausage in a soft finger roll	 Super Tattie's Tasty Tray Egg mayo sandwich ✓
Fresh broccoli & grated carrot	Mixed vegetables & coleslaw	Fresh carrots & mixed peppers	Spicy onions & mixed salad	Peas & beetroot
Selection of fruit/ yoghurt	Upside down pineapple sponge & custard OR selection of fruit	Selection of fruit/ yoghurt	Chocolate ice cream & fruit OR selection of fruit	Selection of fruit/ yoghurt

Fresh fruit and vegetables will be in accordance with seasonal availability.

All meals are freshly cooked using local suppliers produce and served with 2 vegetable garnishes, a piece of fruit, organic milk or water.

All soups are vegetarian and vegan are made fresh daily. Menu choice can be adapted to suit special dietary requirements, please contact/inform child's school.

Super Tattie's Tasty Tray
Pupils can choose one other item which may include soup/yoghurt or another piece of fruit or healthy baking (available 2 days per week).

Vegetarian ✓ Vegan ✓ Halal ✓

You can have a school lunch. This is an example of the kinds of things you could have.



You could also bring a packed lunch.

At the moment, we eat our lunch in class but might be able to have lunch in the big dinner hall soon.

At gym time you will need...



A bag to store everything in. This can be left at school and sent home each term to be washed.



A pair of shorts or joggers.



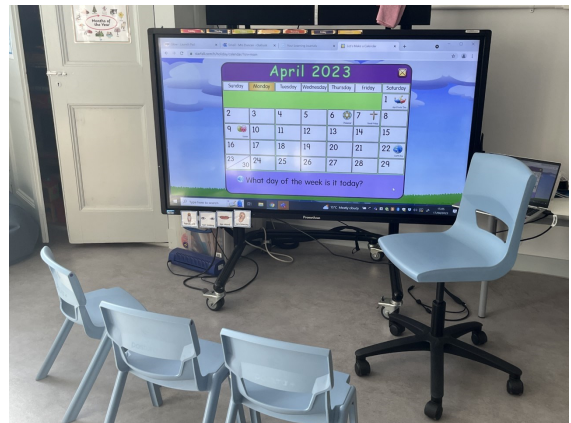
A pair of gym shoes.

We can either do gym in the gym hall, the GP room or sometimes, if the weather is nice, we can do it outside. We might join up with another Centre class to have gym.





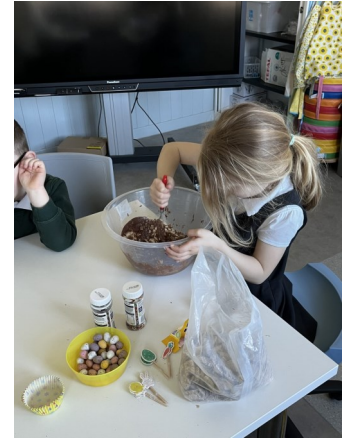
Some photographs of our current infant classes in the Centre.





**We have lots of other rooms in the school,
like a sensory room, nurture/lifeskills class,
library.**





We have lots of fun in our classes.



All of the staff and pupils at Crosshouse
Primary School and Communication

Centre can't wait to meet you!

We will see you soon!

