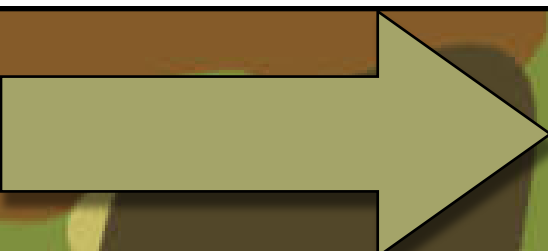
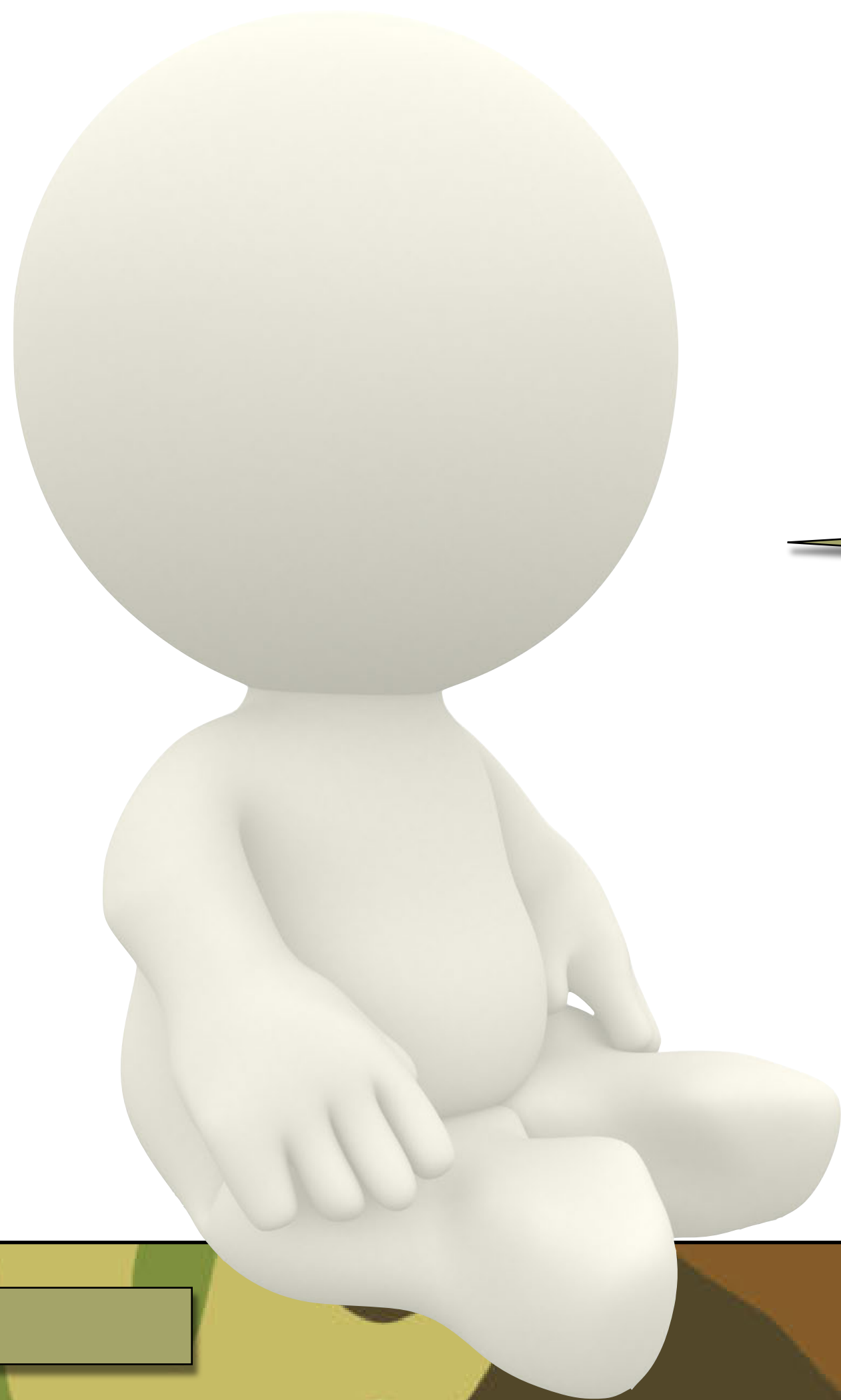


World War 2

Learning Objective:

To study World War 2 aircrafts to improve pencil and sketching skills.



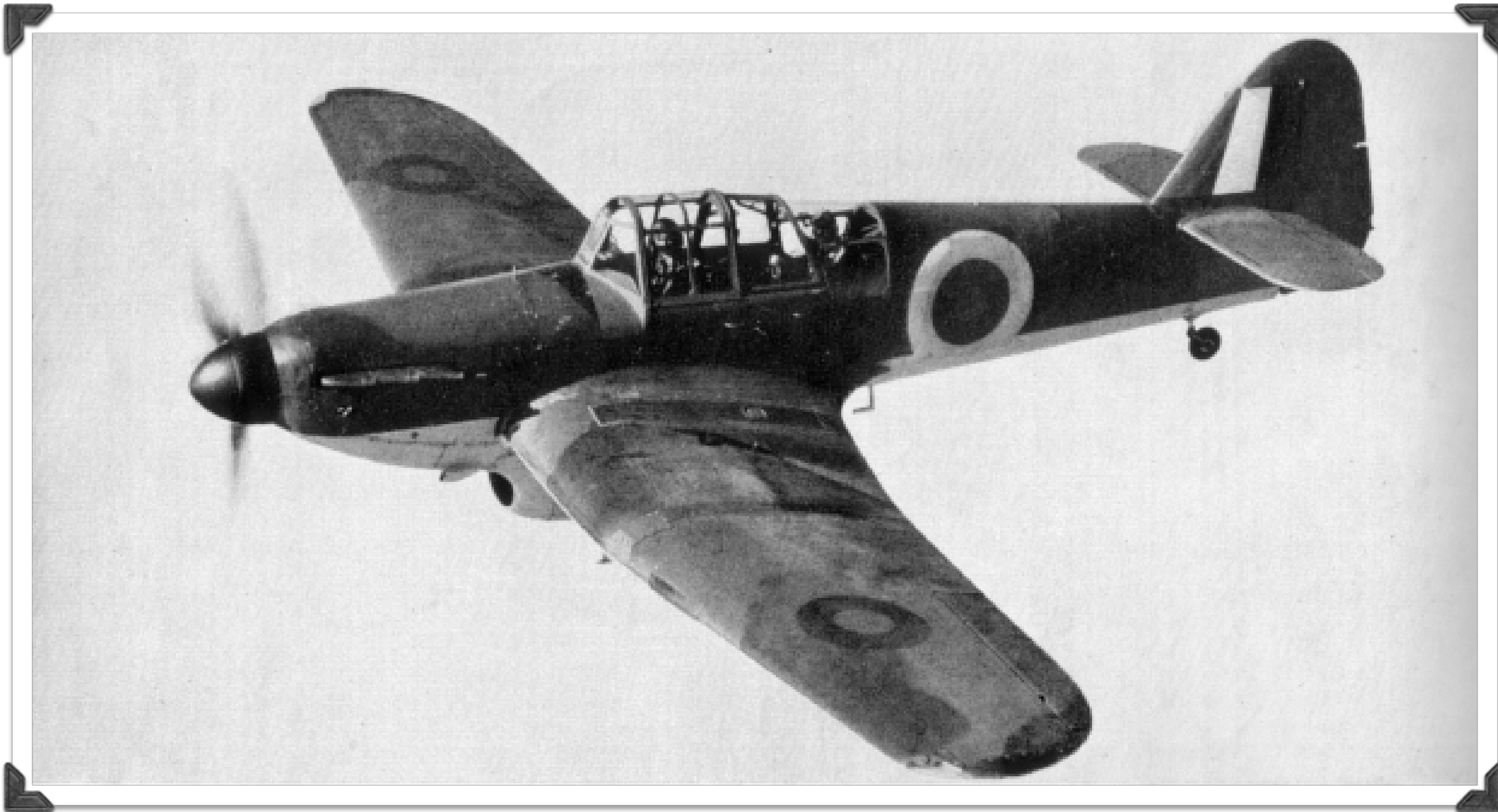


Can you name any
types of aircrafts used
during World War 2?



Have a look at the photographs of aircrafts on the next slides and discuss the questions with a partner.

Miles Master



What shapes can you see?

How could you accurately sketch this picture?

How could you get the shading correct?

How could you accurately draw the shapes?

Supermarine Spitfire



What shapes can you see?

How could you accurately sketch this picture?

How could you get the shading correct?

How could you accurately draw the shapes?

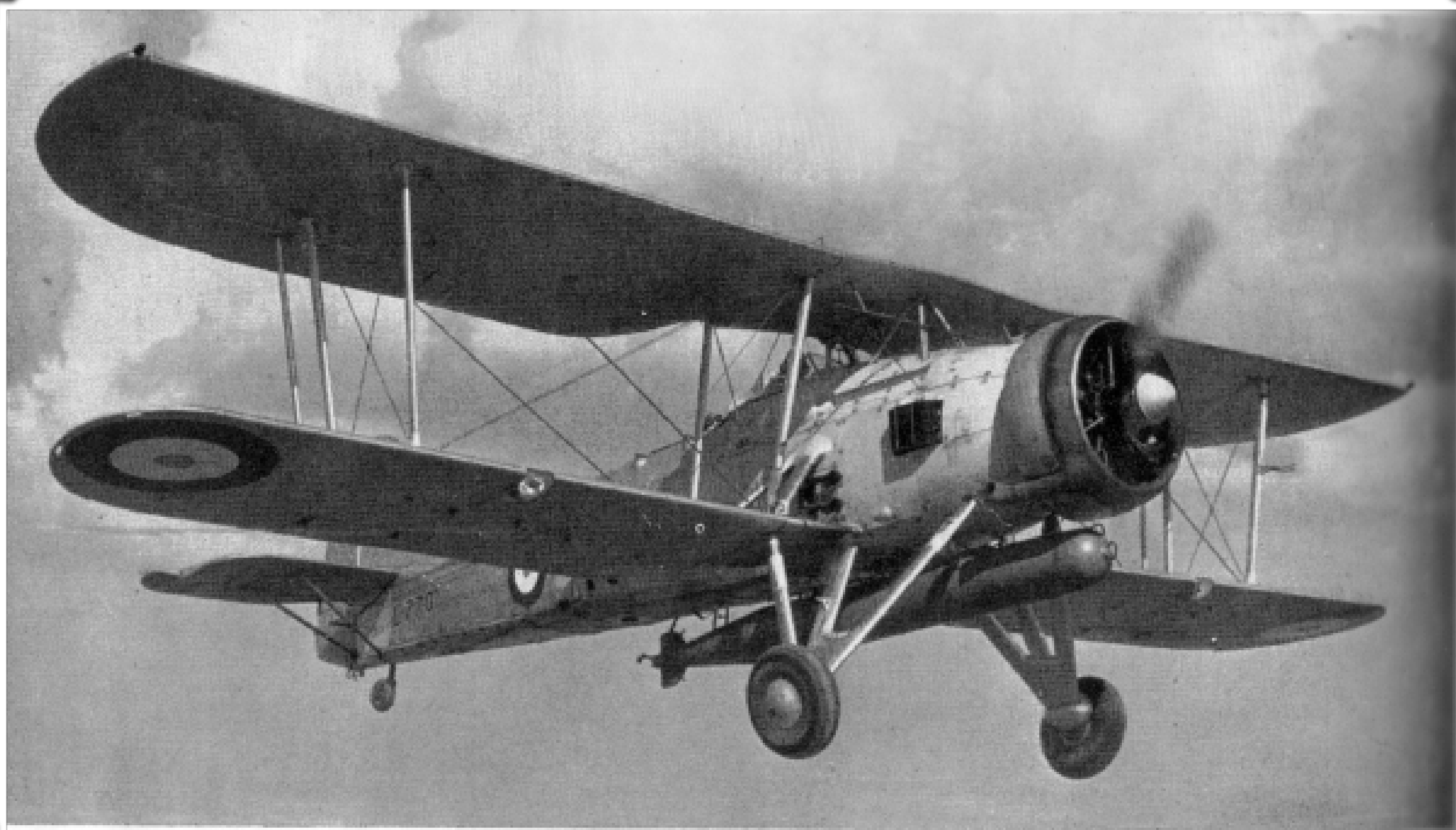
Fairey Swordfish

What shapes can you see?

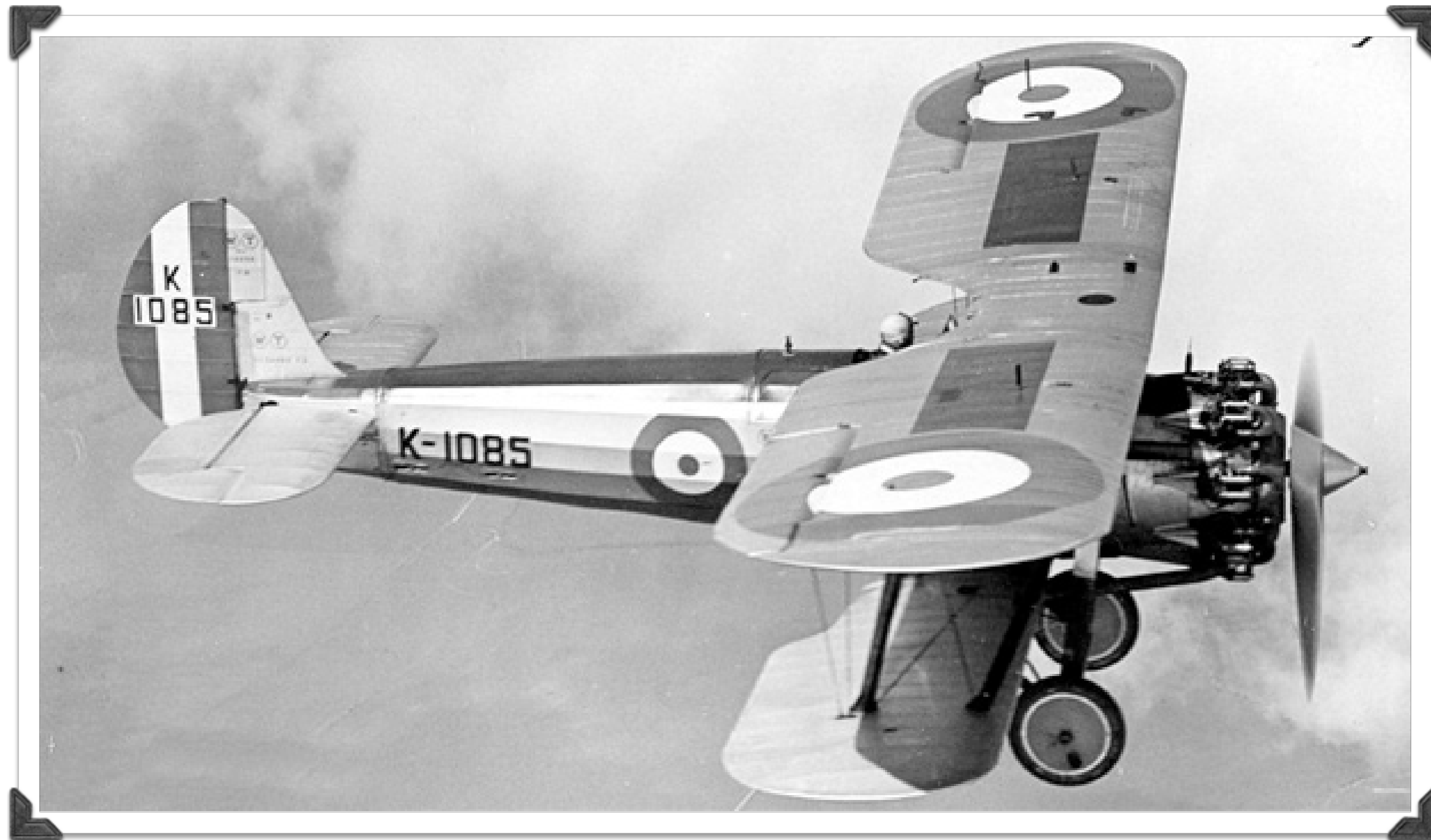
How could you accurately sketch this picture?

How could you get the shading correct?

How could you accurately draw the shapes?



Bristol Bulldog

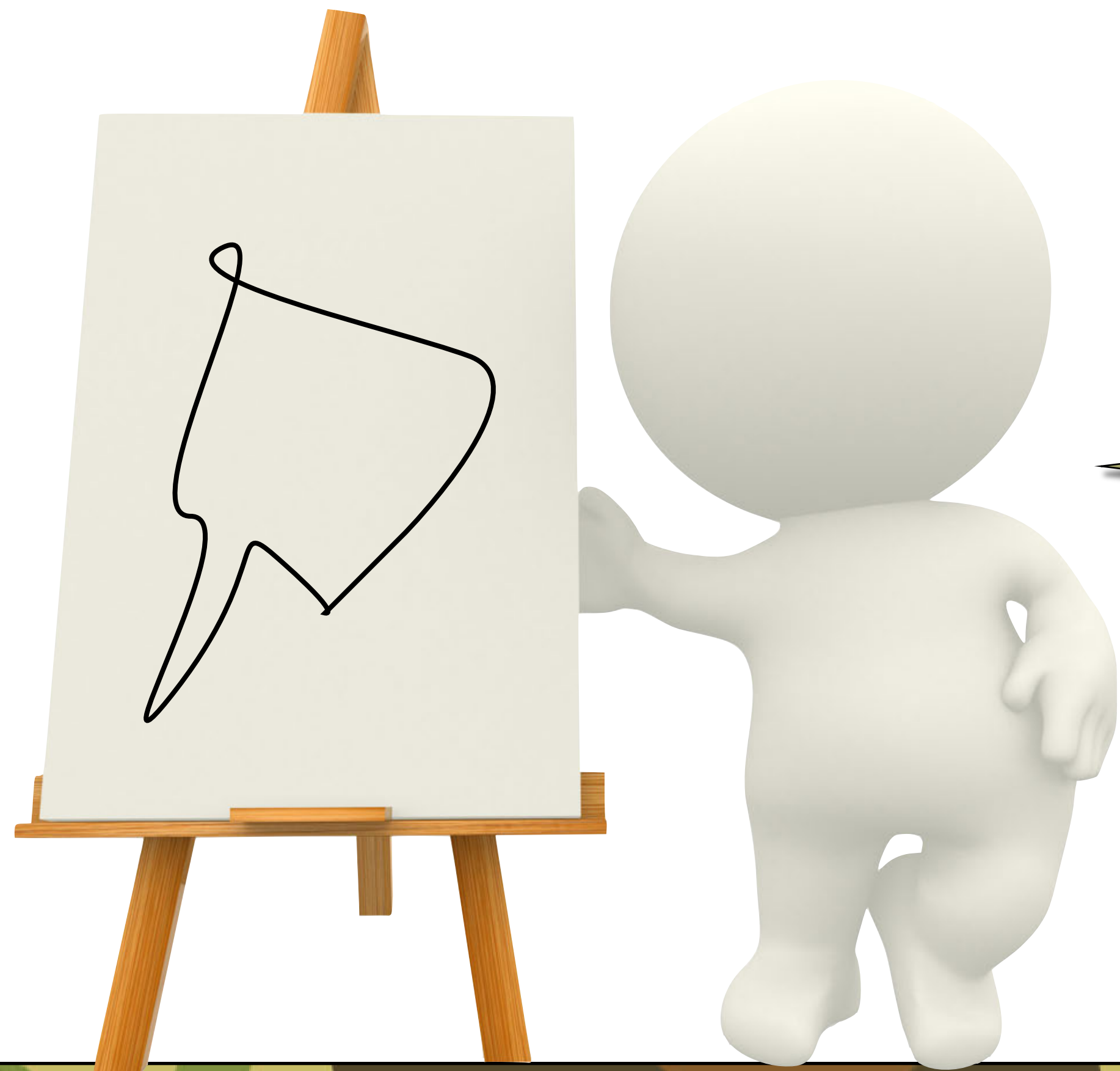


What shapes can you see?

How could you accurately sketch this picture?

How could you get the shading correct?

How could you accurately draw the shapes?



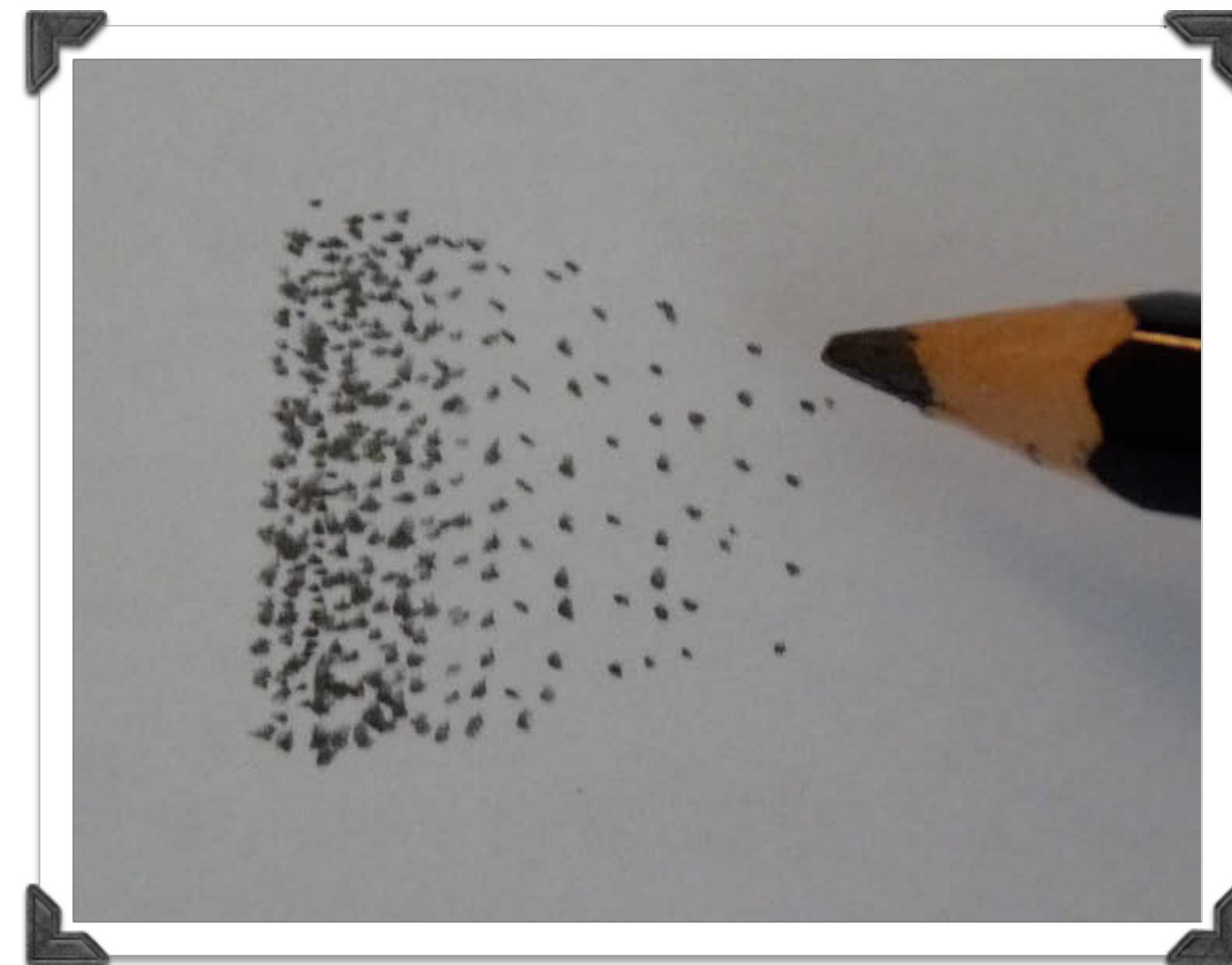
Let's have a look at
some sketching
techniques you
could use.



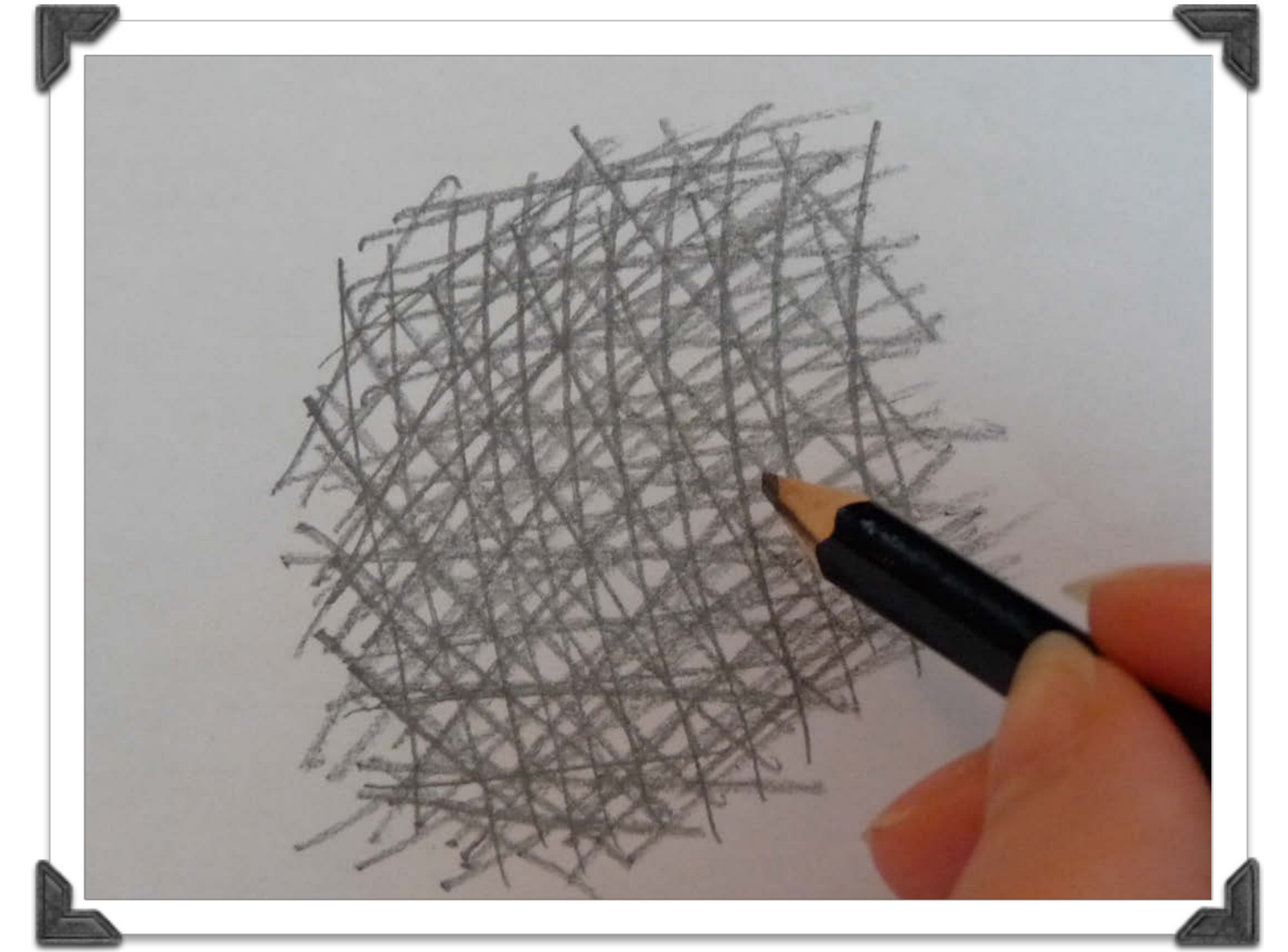
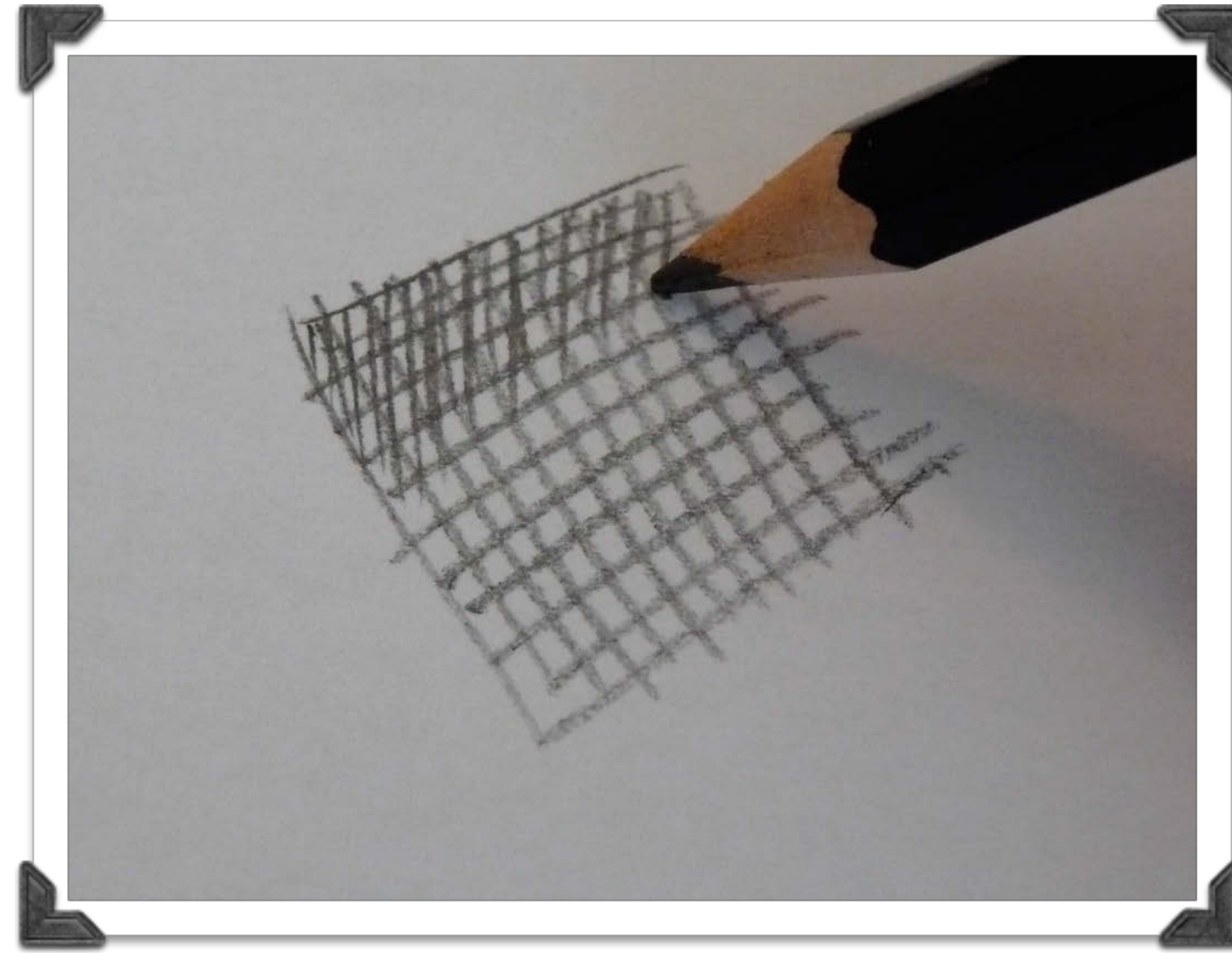
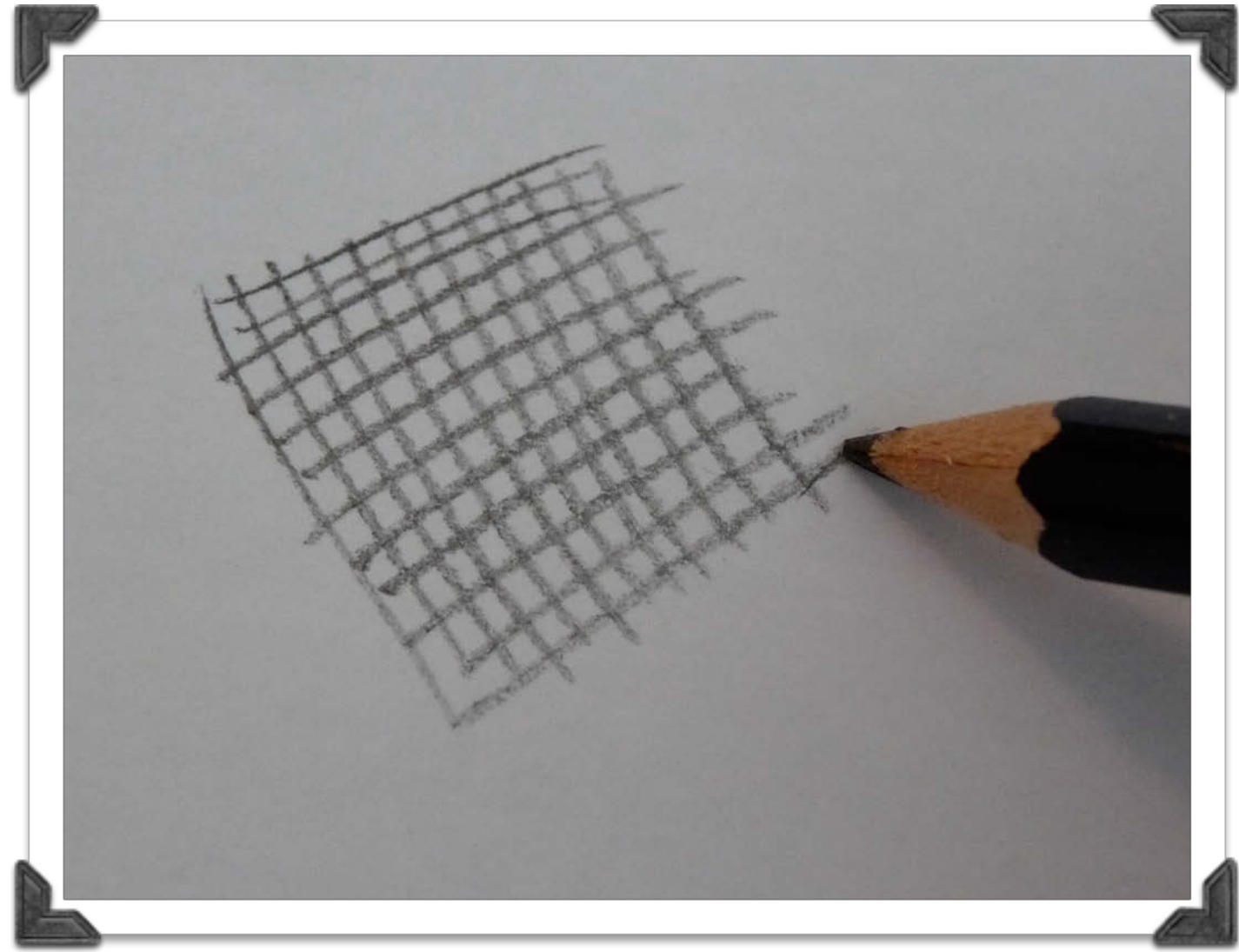
Use the flat edge of the pencil to create soft shading. You can practice creating darker and lighter sections and blending dark and light together.



Use the tip of the pencil to create more defined lines and shapes.

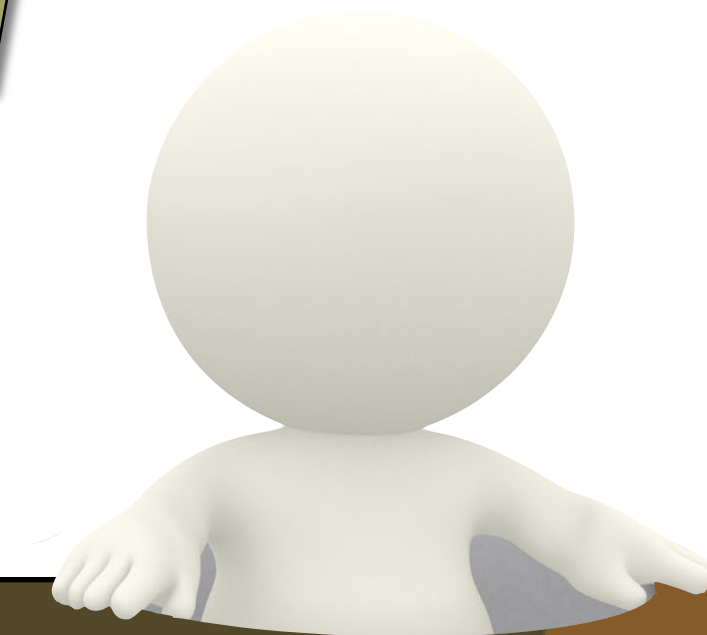


Try using dots to creating shading effects. Use lots of dots close together for darker areas and spread the dots out for lighter areas.



Cross-hatching is another effective way to create shading. Use more lines crossing in different directions for darker effects and fewer lines crossing to keep it lighter. The lines do not always have to be straight.

Have you used any of these techniques before?



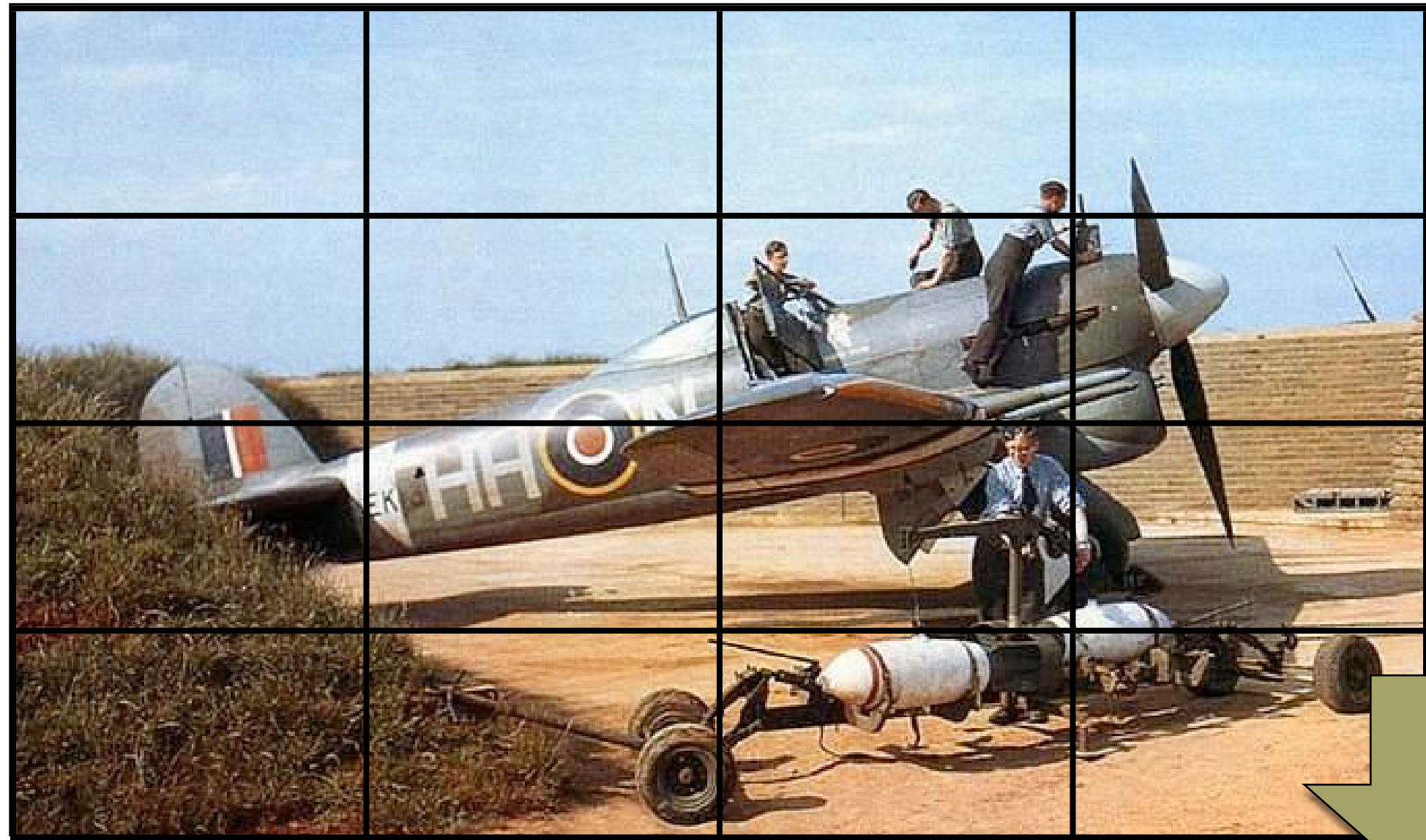


Have you ever used
the grid method to
recreate a picture?
Do you know what
this is?

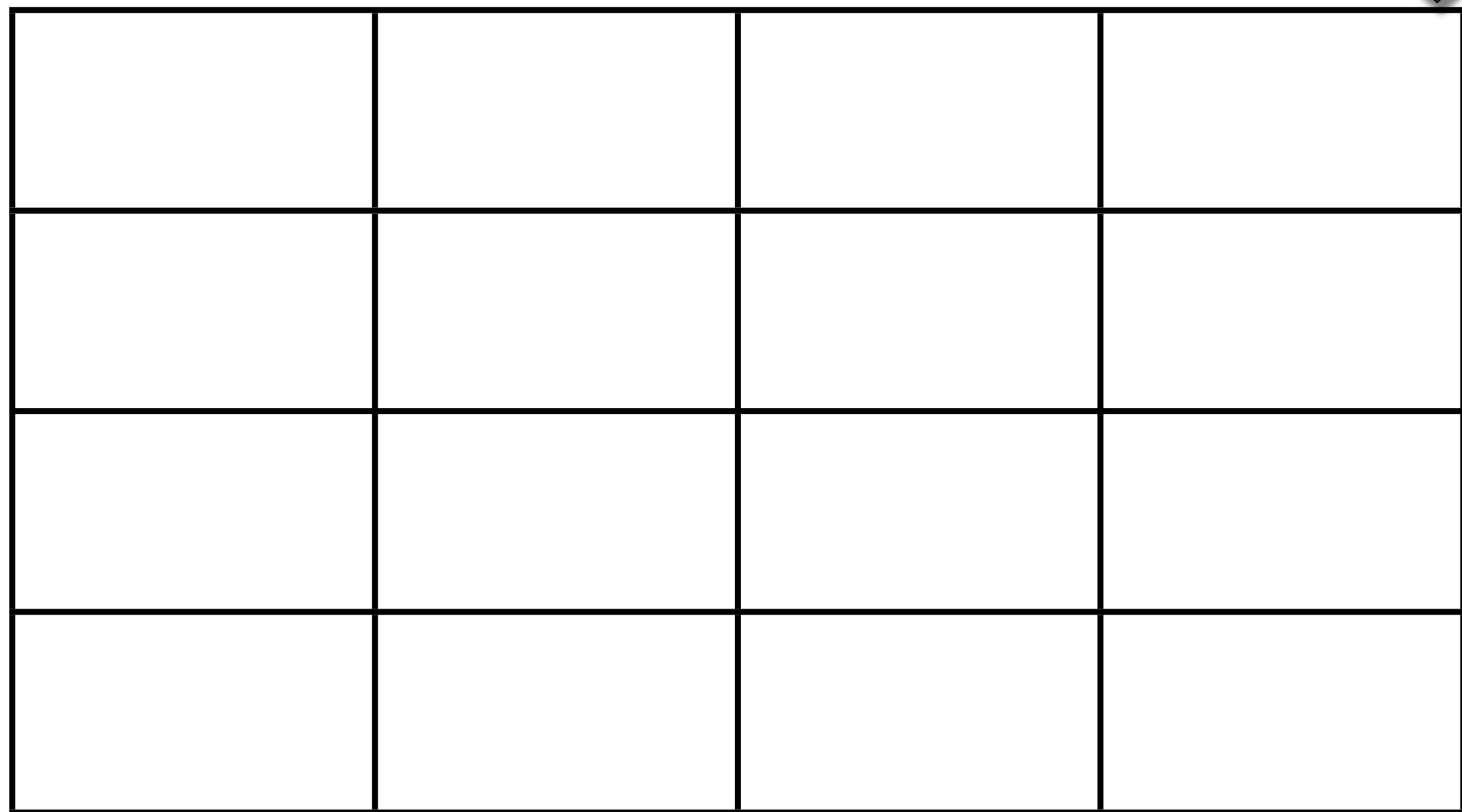
When you want to recreate a picture, using a grid is one of the easiest ways to ensure that the distance and perspective of the picture are correct.

First, you need to draw a grid over the picture you want to recreate.

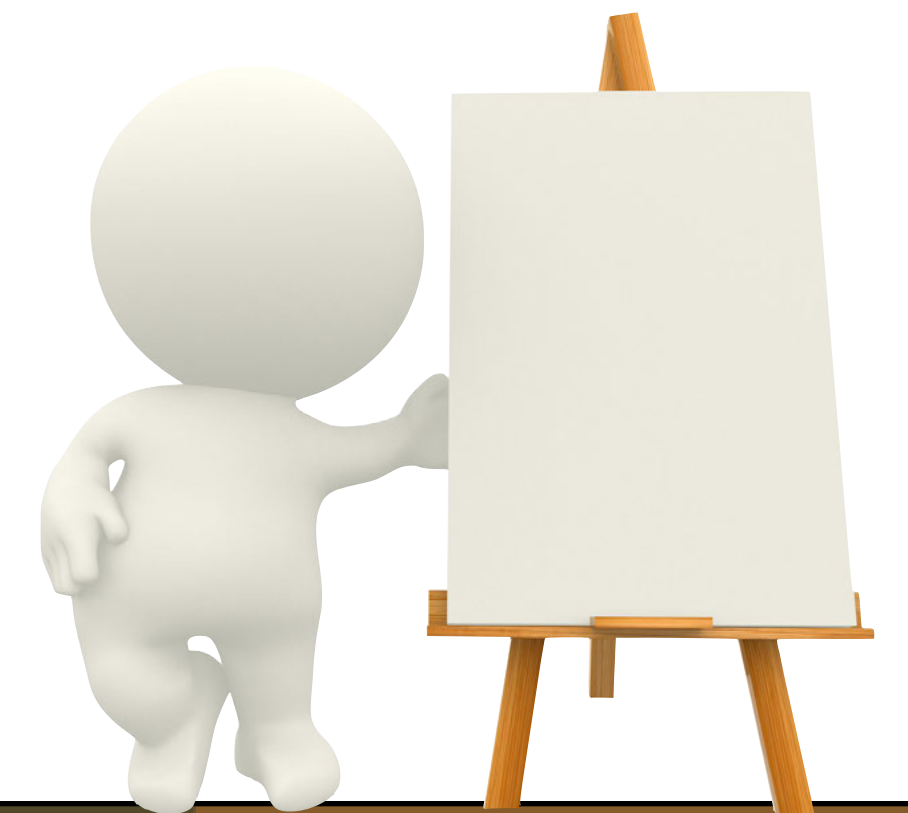




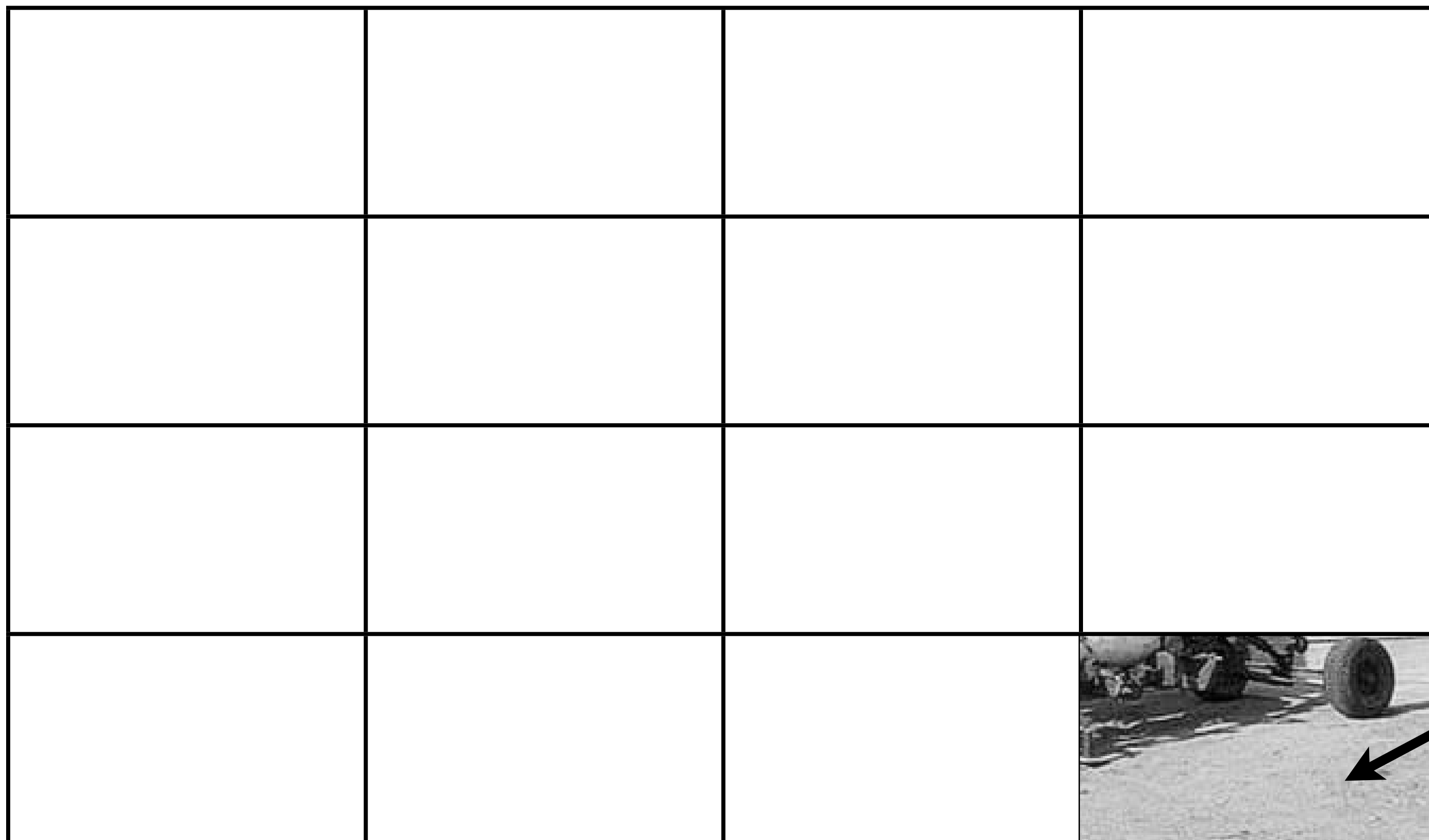
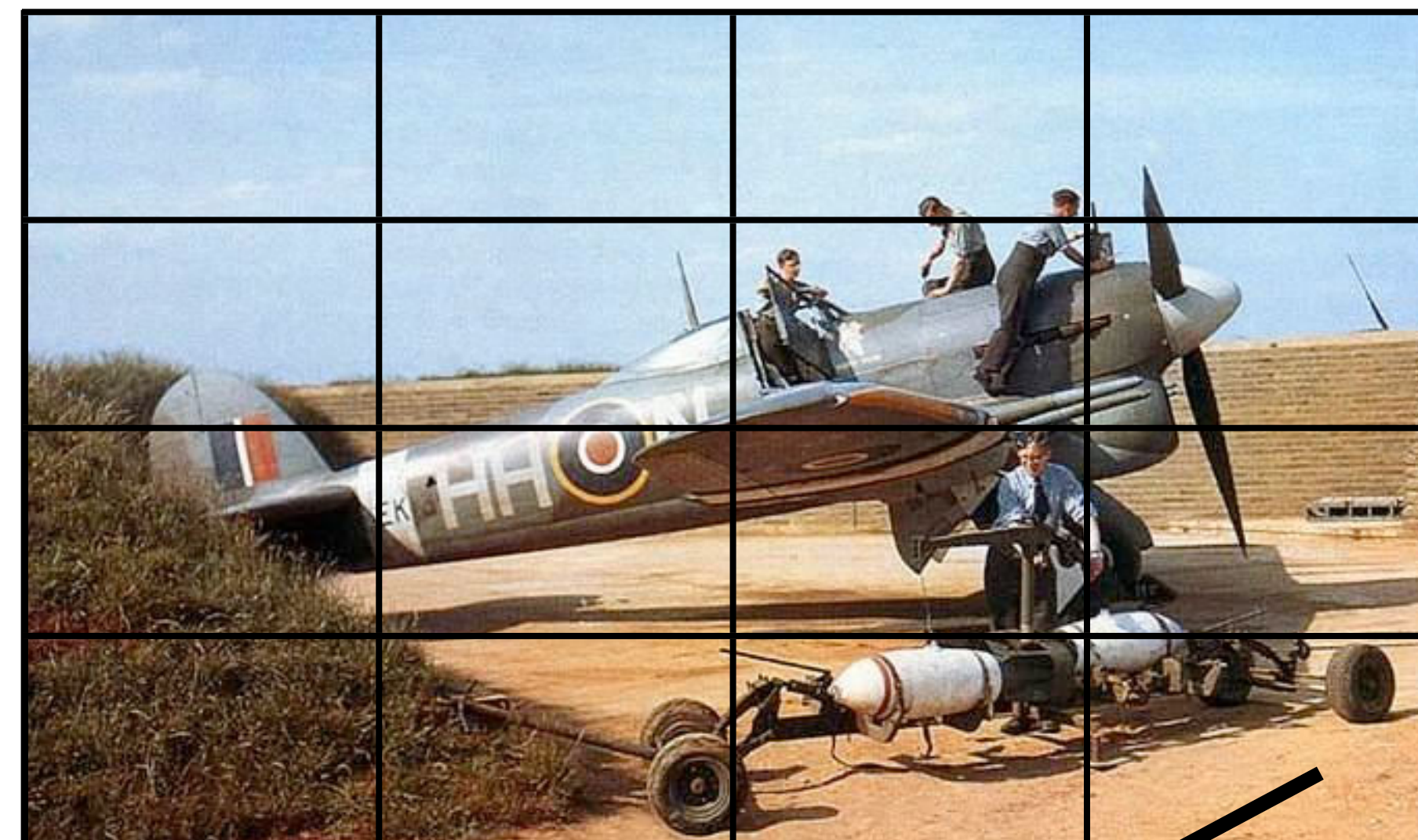
You then need to prepare a blank grid on a larger sheet of paper. You will need to make sure that the squares in each grid are in proportion with each other.



Can you guess what the next step is?

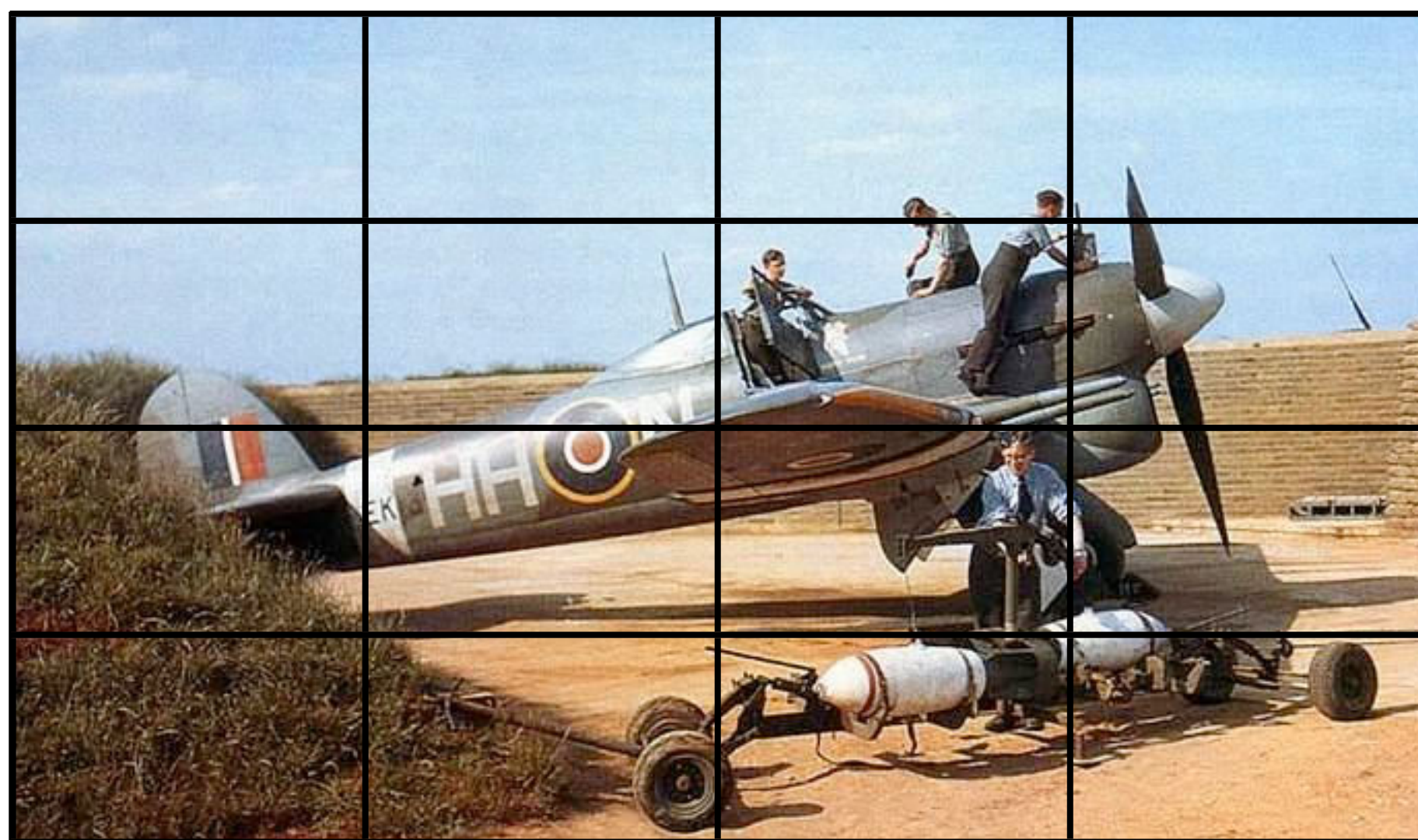


That's right! You can then start to sketch each section, one at a time.



You will need to look closely at the position of the objects and lines. You will also need to match the colours and patterns to the original.

As you sketch each square, you will need to keep a close eye on whether the shapes are lining up and make sure that everything is neat and accurate.



Keep going until you have sketched the whole accurate replica!