

Family Learning

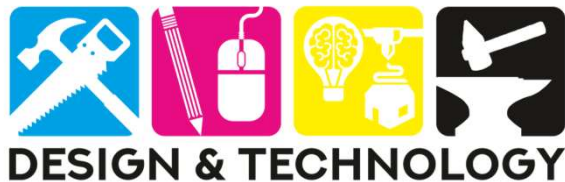
GRAPHIC COMMUNICATION

National 5



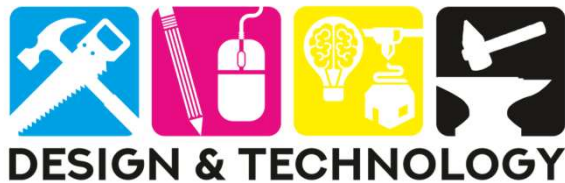
Course Content

- ✓ The 3 P's
- ✓ British Standards
- ✓ A range of drawing types (2D & 3D)
- ✓ Building Drawings and Symbols
- ✓ CAD skills and terminology
- ✓ Desktop Publishing
- ✓ Colour Theory
- ✓ Design Elements and Principles
- ✓ Informational Graphics
- ✓ Technology and Society
- ✓ Environmental Considerations



Assessment Arrangements

Assessment	Total Marks	Value	Marking
Assignment	40	33%	External
Question paper	80	67%	External



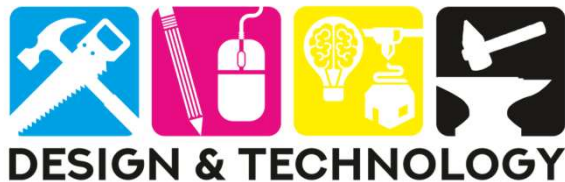
Assignment

A design brief will be provided by the SQA.

The assignment will assess the skills and knowledge the pupils have acquired during the course.

The assignment covers three key areas:

- **Preliminary** graphics
- **Production** graphics
- **Promotional** graphics



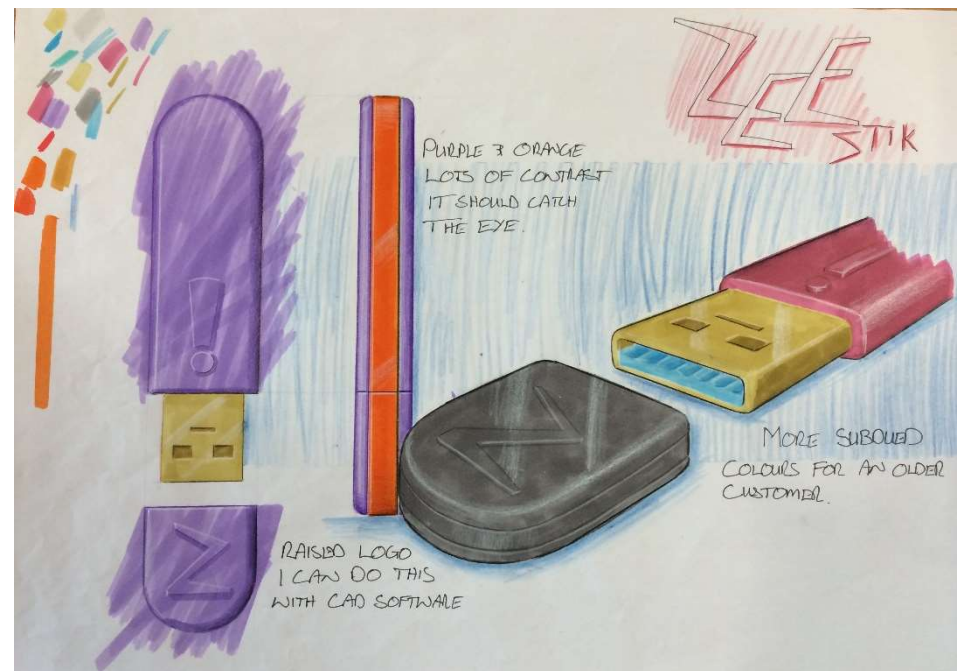
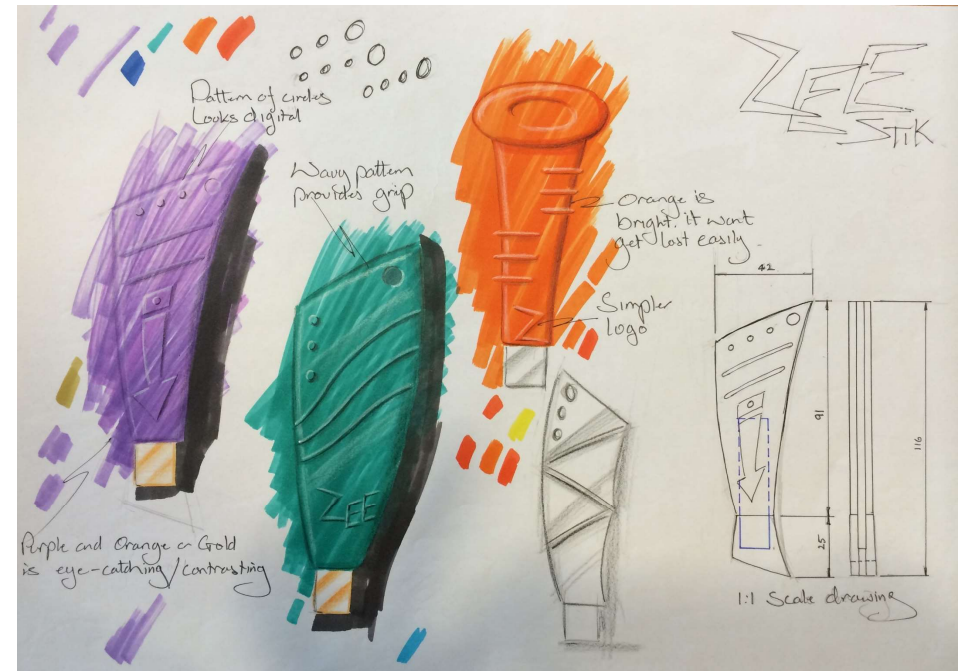
Preliminary Sketches

✓ 2D and 3D Freehand sketches showing shape and form.

✓ Technical detail added, eg dimensions appropriate use of line types etc.

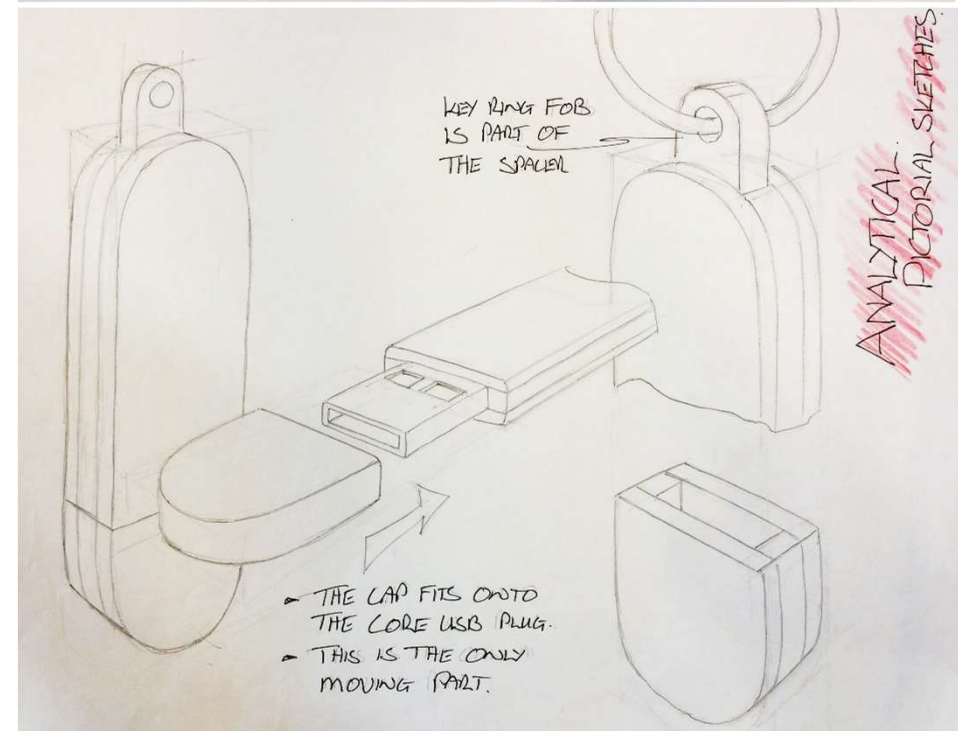
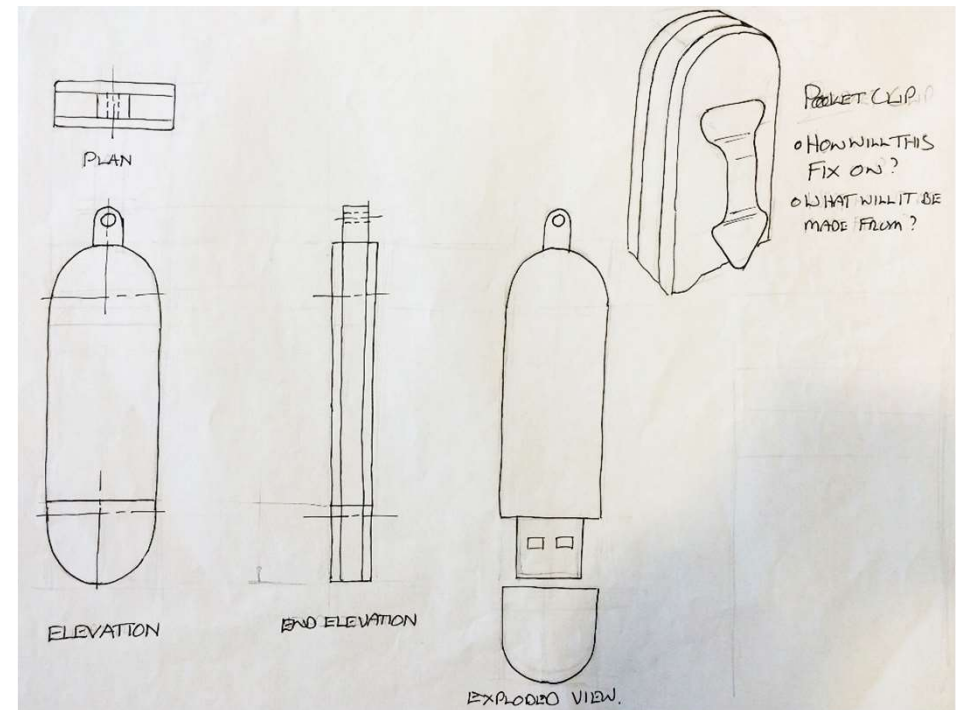
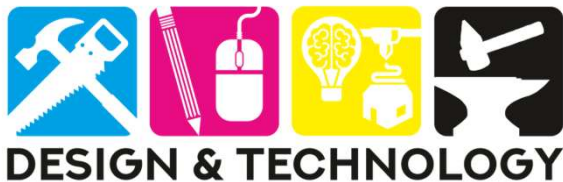
✓ Rendered images to demonstrate tone and material choice.

✓ Detailed thumbnails to support promotional work.



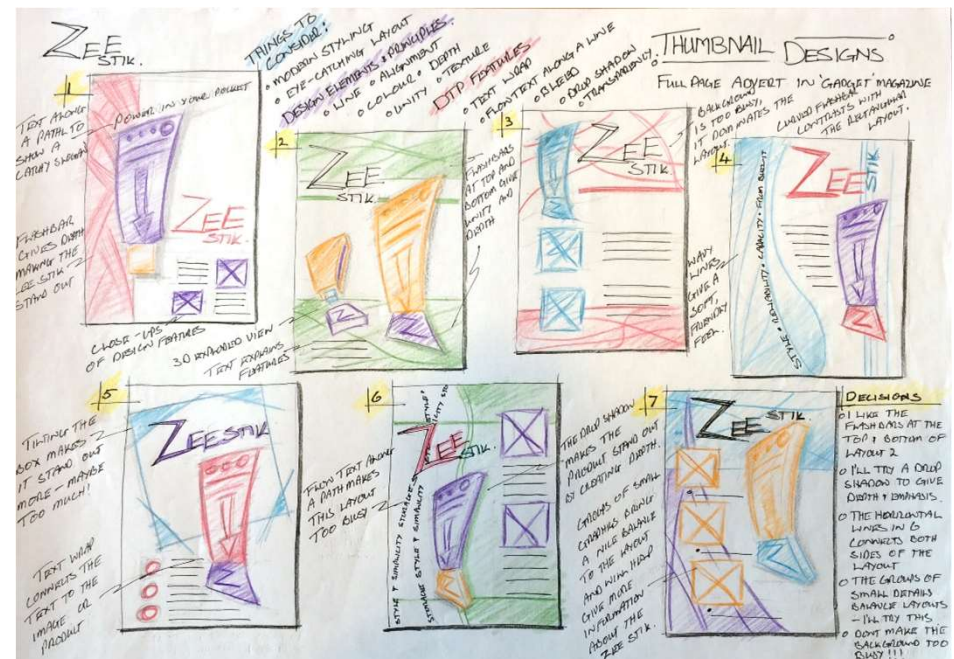
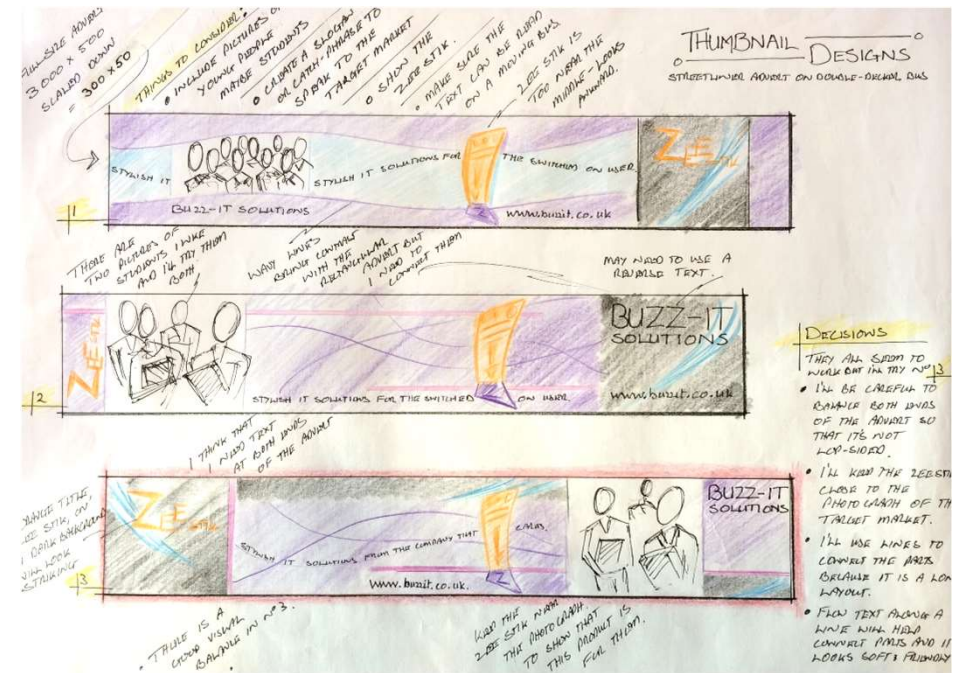
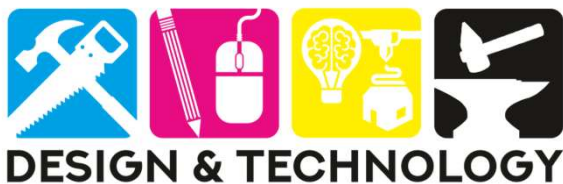
Preliminary Sketches

- ✓ 2D and 3D Freehand sketches showing shape and form.
- ✓ Technical detail added, eg dimensions appropriate use of line types etc.
- ✓ Rendered images to demonstrate tone and material choice.
- ✓ Detailed thumbnails to support promotional work.



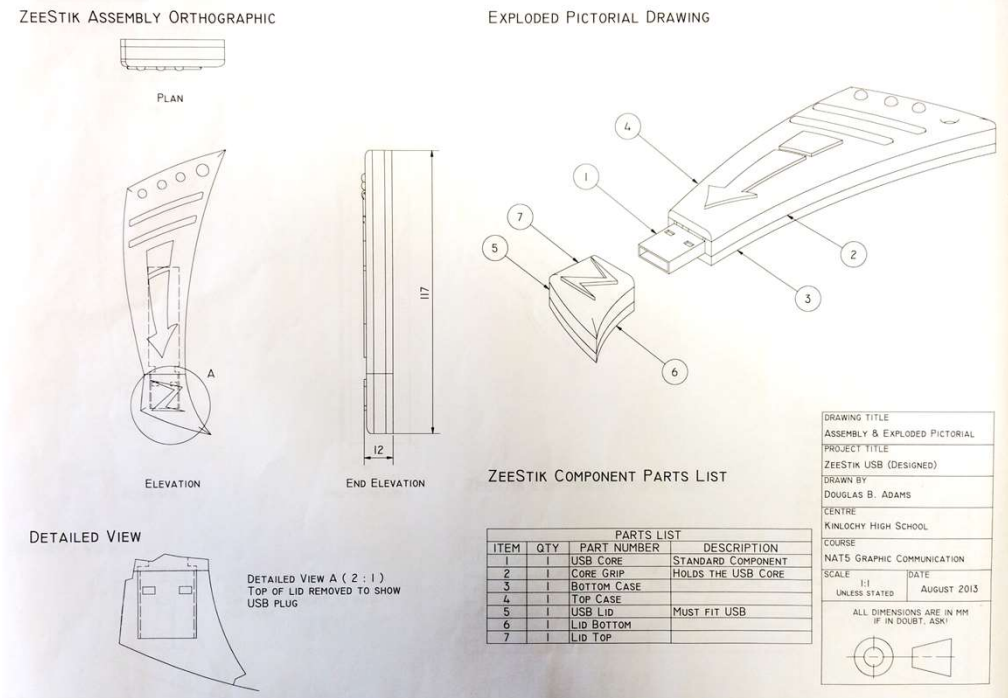
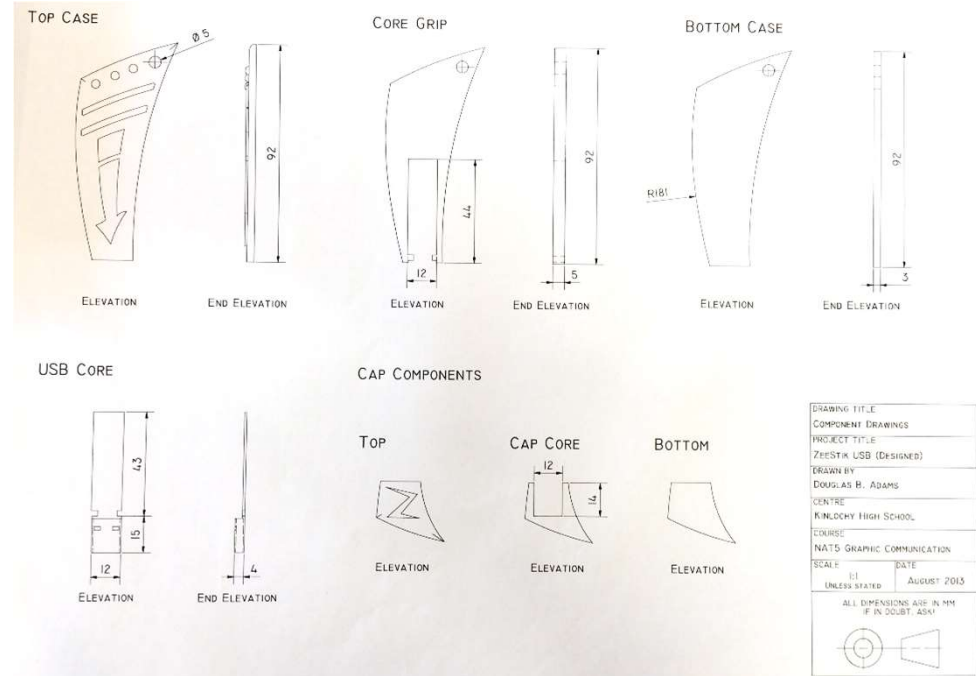
Preliminary Sketches

- ✓ 2D and 3D Freehand sketches showing shape and form.
- ✓ Technical detail added, eg dimensions appropriate use of line types etc.
- ✓ Rendered images to demonstrate tone and material choice.
- ✓ Detailed thumbnails to support promotional work.



Production Drawings

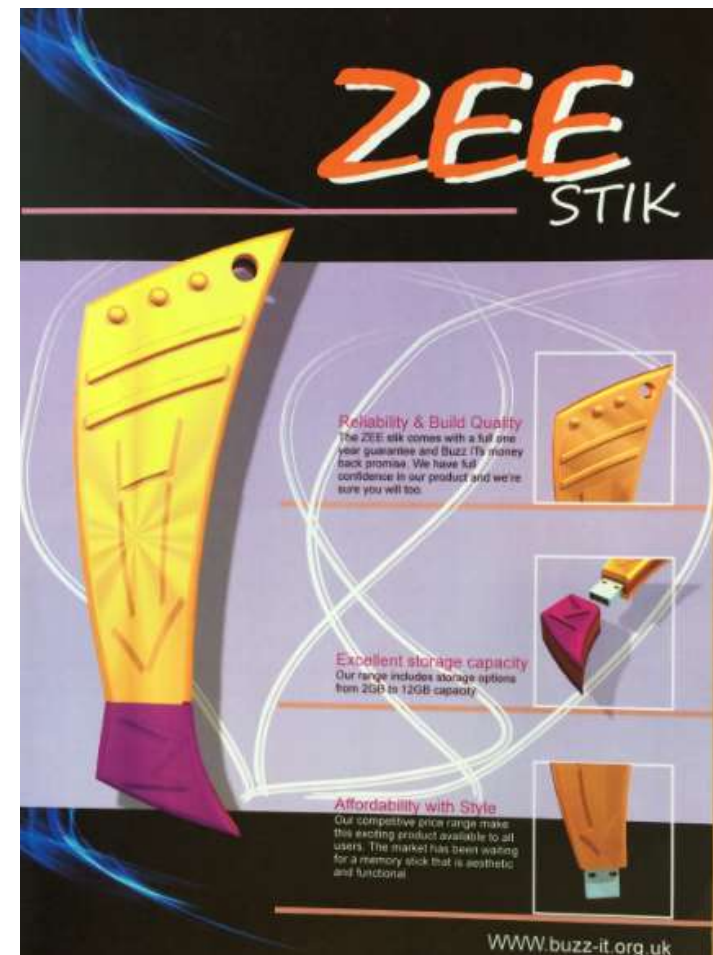
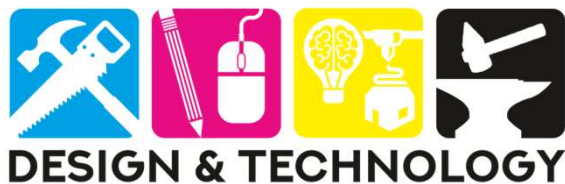
- ✓ A series of Orthographic (2D) and Pictorial (3D) drawings produced on CAD software.
- ✓ Technical detail added, eg dimensions appropriate use of line types etc.



Promotional Graphics

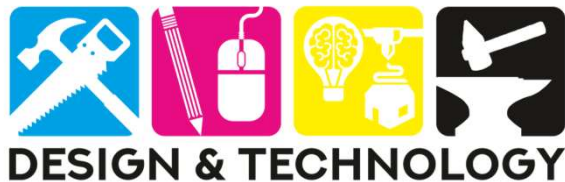


- ✓ A promotional display using the images provided.
- ✓ Must demonstrate a clear understanding of different desktop publishing features as well as make use of set design elements and principles.



Assignment pitfalls

- Time management (8 hours – around 9 periods)
- No teacher input or help
- Pupils to work under exam conditions
- No access to notes or the internet to assist them.

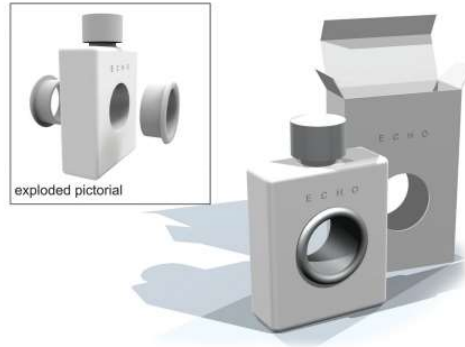


Question Paper

Duration:
2 hours

Total:
80 marks

2. ECHO is a new fragrance. The bottle and packaging have been designed to reflect the product name.
- The centre 'O' ring consists of two interlocking parts that secure the bottle in the packaging.



The product will be mass produced and sold globally. The company wish to minimise the product's impact on the environment.

- (a) Describe two ways the designer can reduce the impact the packaging has on the environment.



page 06

2. (continued)

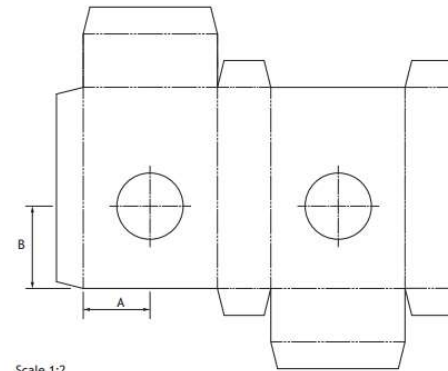
The packaging for the bottle is to be manufactured from a single sheet of card. A surface development of the packaging is shown below.

The CAD technician has been asked to identify the positioning of key features that are to be cut out.

- (b) Indicate on the surface development, below, where the text "ECHO" will be cut out.

You should use the CAD illustration provided on the opposite page.

Use "E" to indicate the position of the text.



Scale 1:2

- (c) Calculate, using the scale 1:2, measurements A and B (indicated on the above development).

Use a ruler to measure.

(i) Measurement A _____ mm

(ii) Measurement B _____ mm

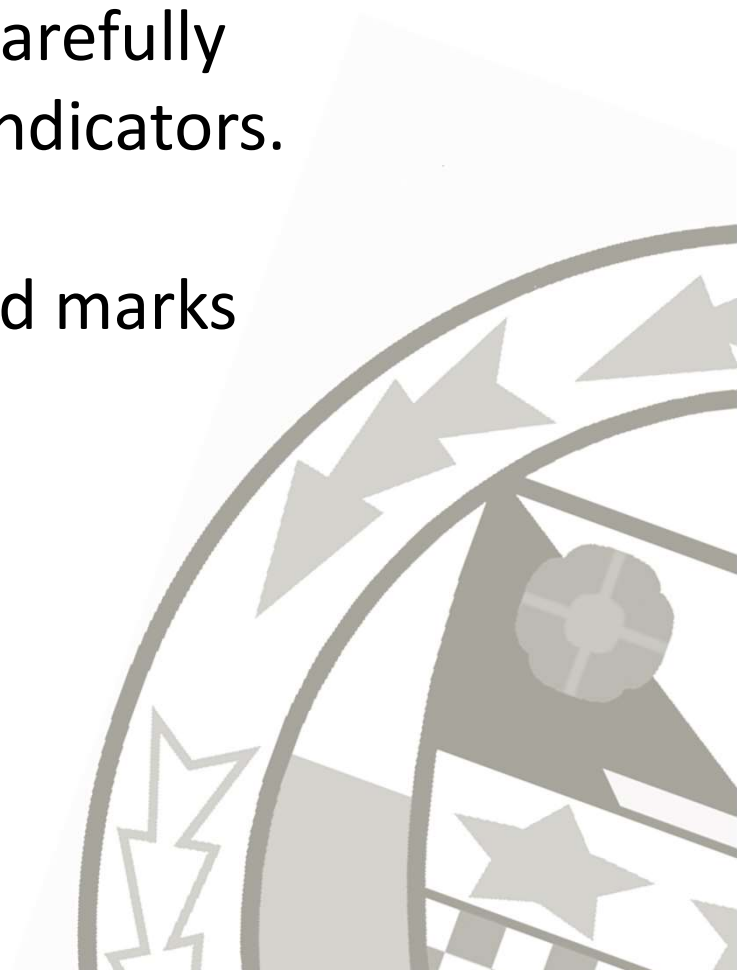
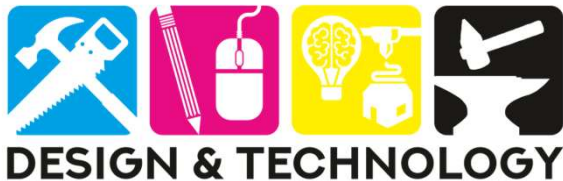
[Turn over]



page 07

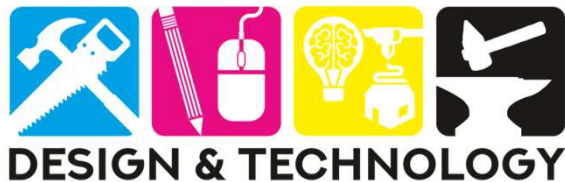
Question Paper

- Not writing enough detail in their answers.
- Pupils not reading the question carefully therefore missing key words or indicators.
- Pupils not taking note of allocated marks questions.
- Pupils not using the correct terminology.



Preparation and Support

- Encourage attendance at supported study or lunch time drop in sessions.
- Ask pupils if they have any homework, course work or deadlines due.
- Ask about the DTP techniques used on every day items.
- Leckie and Leckie Course Notes



Useful Resources

- ✓ SQA Website
<https://www.sqa.org.uk/sqa/45653.html>
- ✓ Past papers and Marking schemes for exams
<http://www.sqa.org.uk/pastpapers/findpastpaper.htm>

