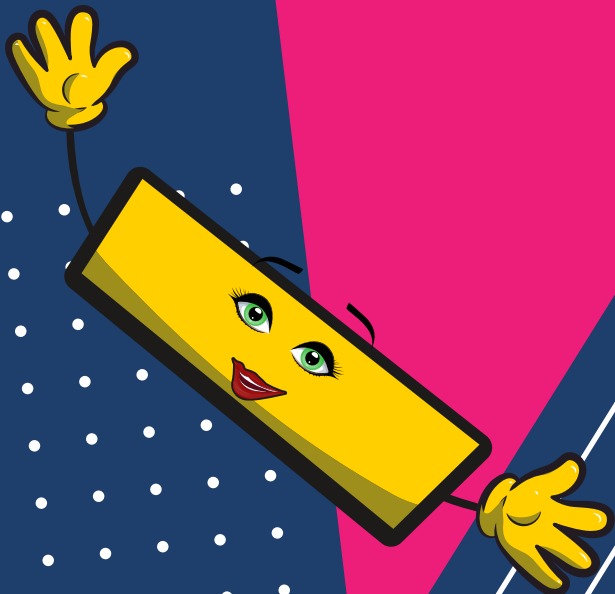


Punctuation for parenthesis

Commas, dashes and brackets



www.grammarsaurus.co.uk



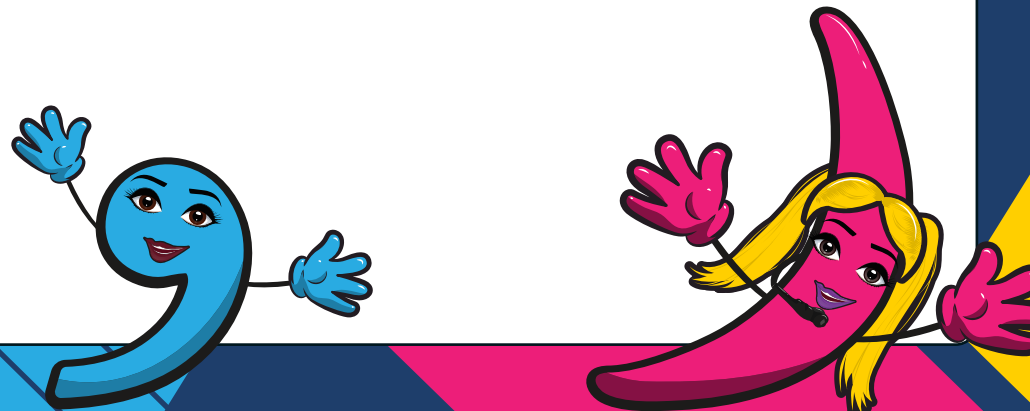
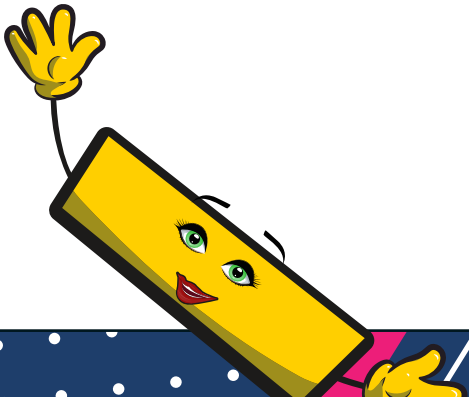
What is parenthesis?

Within sentences, it is possible to **add extra information** to give more detail or as an afterthought.

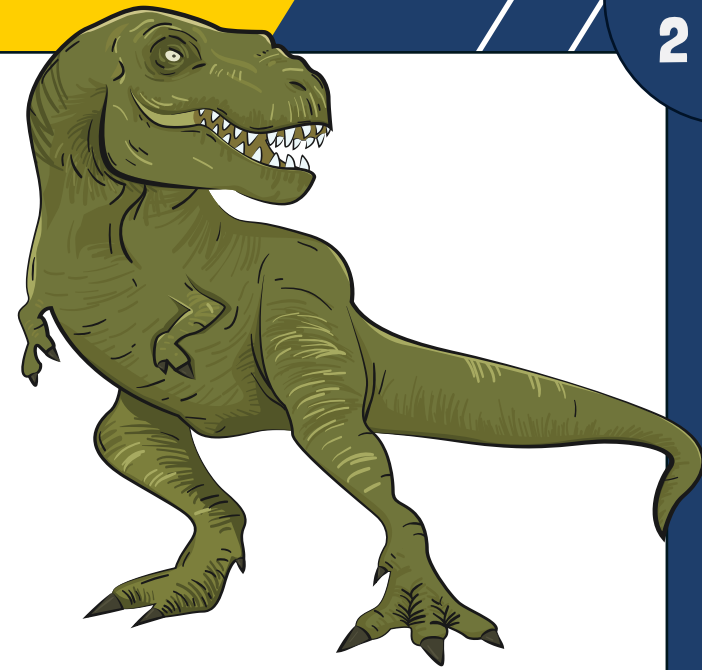
If this extra information was left out (because it's extra), **the rest of the sentence still makes sense.**

This extra information is called **parenthesis** and can be punctuated using a **pair of commas**, **dashes** or **brackets**.

It is important to try to **use a variety in your writing** to keep it interesting for your reader!



Can you identify the parenthesis?



The Tyrannosaurus Rex, which is a carnivore, is a huge dinosaur.

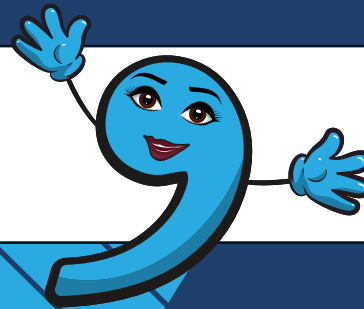
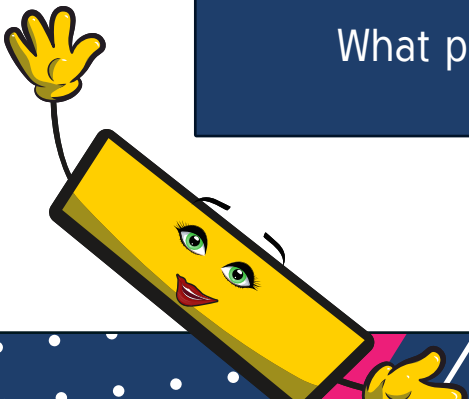
The Tyrannosaurus Rex (40 feet tall) is a huge dinosaur.

The Tyrannosaurus Rex – or just T-Rex – is a huge dinosaur.

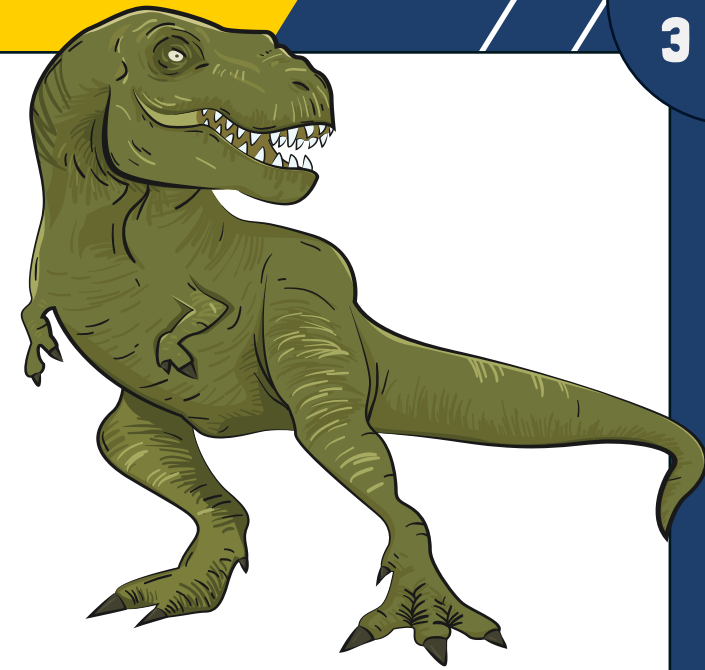
The Tyrannosaurus Rex (one of the most feared creatures to ever live) is a huge dinosaur.

Consider **what the part of the sentence can be removed** so that what is left **still makes sense**.

What punctuation has been used to **demarkate the parenthesis** or additional information?



Can you identify the parenthesis?



The Tyrannosaurus Rex, **which is a carnivore**, is a huge dinosaur.

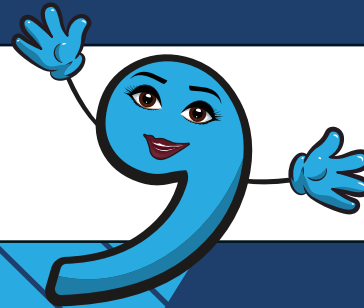
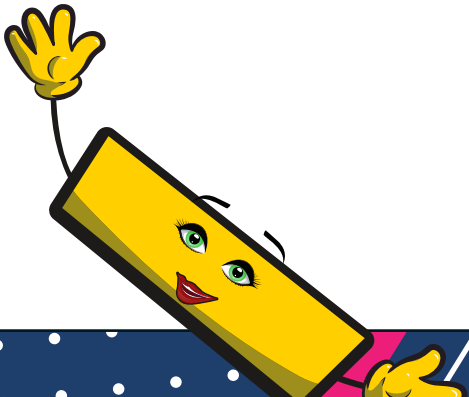
The Tyrannosaurus Rex **(40 feet tall)** is a huge dinosaur.

The Tyrannosaurus Rex – **or just T-Rex** – is a huge dinosaur.

The Tyrannosaurus Rex **(one of the most feared creatures to ever live)** is a huge dinosaur.

Did you identify the parenthesis?

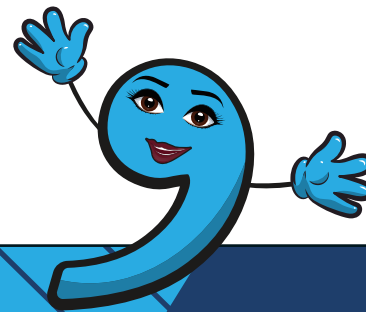
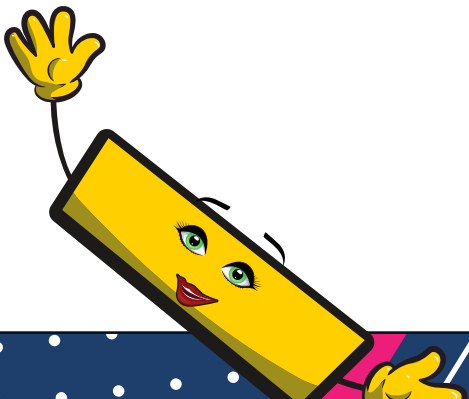
What additional information did it tell us in each sentence?



Can you identify the correctly punctuated sentences?

Read these sentences and identify where the punctuation has been used correctly.

- Paris, which is the capital of France – is home to the Eiffel Tower.
- My sister (Juliet) was asked to babysit for our neighbour.
- The film – Jaws, really scared me.

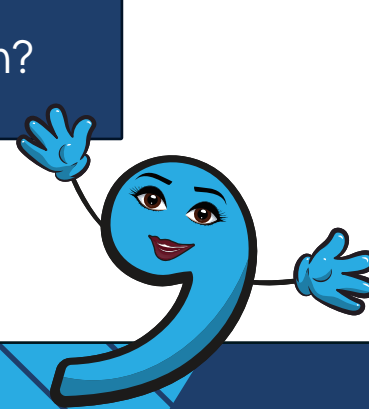
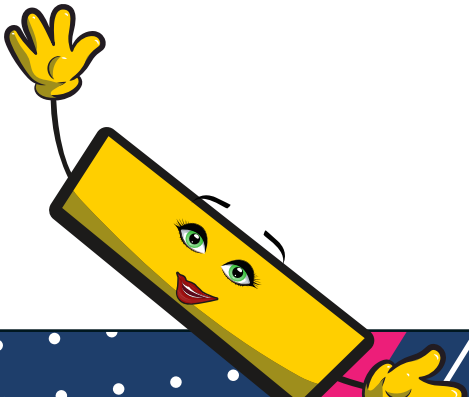


Can you identify the correctly punctuated sentences?

Read these sentences and identify where the punctuation has been used correctly.

- Paris, which is the capital of France – is home to the Eiffel Tower. ✗
- My sister (Juliet) was asked to babysit for our neighbour. ✓
- The film – Jaws, really scared me. ✗

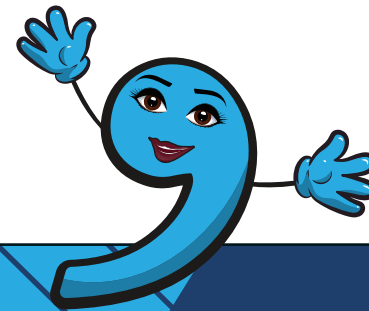
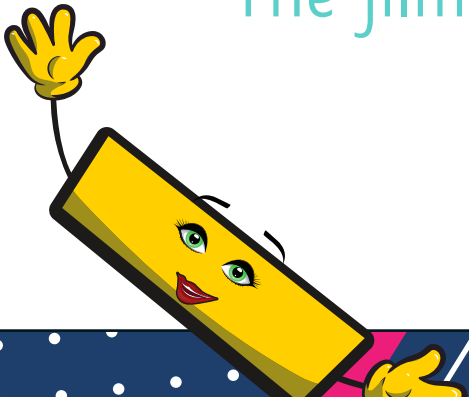
How should these be written?



Can you identify the correctly punctuated sentences?

Read these sentences and identify where the punctuation has been used correctly.

- Paris, which is the capital of France – is home to the Eiffel Tower. ✗
- Paris, which is the capital of France, is home to the Eiffel Tower. ✓
- Paris – which is the capital of France – is home to the Eiffel Tower. ✓
- Paris (which is the capital of France) is home to the Eiffel Tower. ✓
- The film – Jaws, really scared me. ✗
- The film – Jaws – really scared me. ✓
- The film (Jaws) really scared me. ✓

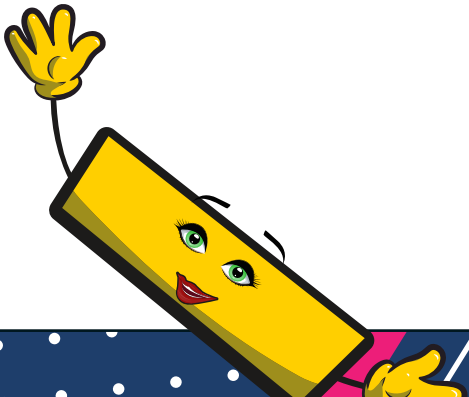


Can you add parenthesis to this sentence?

Billie Eilish is an American singer-songwriter.

The extra information needs to go **after the noun**.

Consider the punctuation you will use.



Can you add parenthesis to this sentence?

Billie Eilish is an American singer-songwriter.

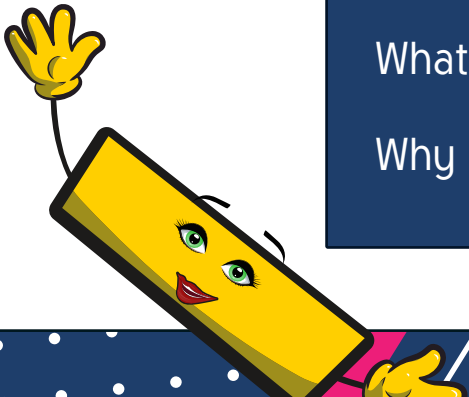
Billie Eilish, who has had many top 10 hit songs, is an American singer-songwriter.

Billie Eilish – born on December 18, 2001 – is an American singer-songwriter.



What additional information has been provided?

Why is this useful?



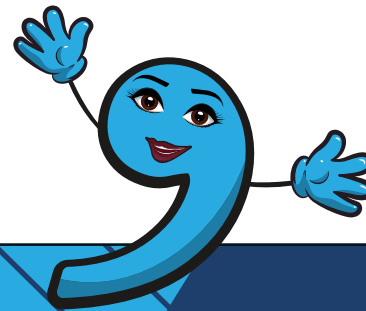
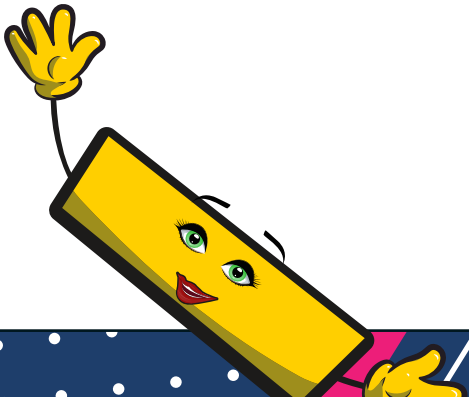
Relative clauses

Relative clauses are a type of parenthesis as they provide **extra information to each sentence**.

It directly **links to the noun** which you are describing or modifying – it is relative (related) to it.

The sentence would still make sense without a relative clause and can still be punctuated using a pair of **commas, dashes or brackets**.

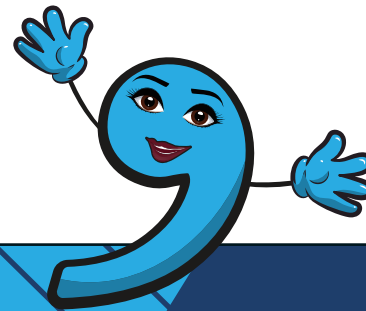
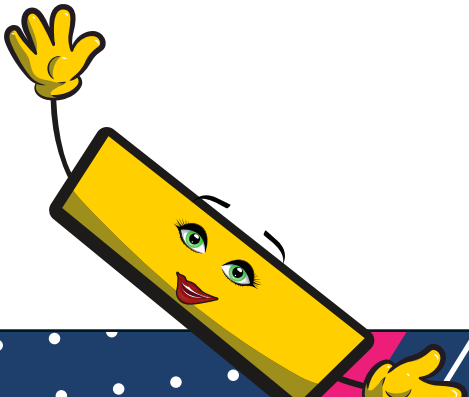
A relative clause starts with a **relative pronoun**: **who, which, where, whom, that, whose**.



Can you add relative clauses to these sentences?

Remember to add a relative clause starting with **who, which, where, whom, that, whose** after each of the **nouns** in the sentence.

- The **bridge** was closed due to the high winds.
- **Athens** is our next holiday destination.
- **Harry** always looks messy!



Can you add relative clauses to these sentences?

Remember to add a relative clause starting with **who, which, where, whom, that, whose** after each of the **nouns** in the sentence.

- The **bridge**, **which crosses between Puddletown and Wentington**, was closed due to the high winds.
- **Athens**, **which is the capital of Greece**, is our next holiday destination.
- **Harry**, **who never irons his clothes**, always looks messy!

