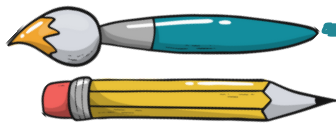


P3/4 with Mr Rudd



Term 1 Learning Leaflet

TEACHING STAFF IN P3/4

Mr Rudd (Class Teacher): Monday - Thursday

Miss Atkins (Class Teacher): P3 Friday (P1-3 Class)

Mr Rudd (Class Teacher): P4 Friday (P4-7 Class)

Ms Romay (NCCT Teacher) - Wednesday (11.15 - 12.10)

Mr Law (PE Teacher) - Friday (P4 8.55 - 10.40 and P3 11.00 - 12.30)



KEEPING IN TOUCH

The easiest way to keep in touch with me is through Just2Easy. Please send me a message and I will get back in touch.

I will also be sharing what we are doing in class through J2 Journal within Just2Easy. So, keep your eyes peeled!

If you are not already signed up to Just2Easy please get in touch with me and I can set this up for you.

Please remember that all absences need to be sent through the school office and not Just2Easy.



REMINDERS

Please make sure your child's homework folder is in their bags every day.

P.E will be on Tuesday and Friday. Please remember to pack a PE kit on these days.

Please check bags for letters.

Please also check your child's homework diary as there may have notes from school staff.

P4 have curricular swimming on: 17, 18, 19, 24, 25, 26 September and 1, 2 and 3 October. Please remember your child's swimming bag on these days. They will be accompanied by Jim for these sessions.

Lunches continue to be ordered online using the IPayimpact system. It would be helpful if you pre-order your child's meals prior to the start of the school day. Packed lunches should also be recorded online.

LITERACY

We will be focussing on:

Comprehension skills, mainly retrieving information within a text.
Spelling Rules.

Letter formation and practising joins.

Grammar, including consistently using capital letters and full stops, alphabetical order, using dictionaries, adjectives, common nouns and proper nouns.

Creative (imaginary) Writing, including structure of a story and descriptive writing. We will so be looking at recounting events using time openers.



NUMERACY AND MATHS

We will be focussing on:

Numbers to 100/1000/10000 - words, digits, ordering.

Reading number lines/scales, missing numbers.

Rounding.

Place Value.

2D and 3D shape. (Fridays)

Developing mental strategies for addition and subtraction.



HEALTH AND WELLBEING

We will be focussing on:

PE:

Mr Law will be working on Invasion Games (Personal Qualities).

Mr Rudd will be working on balance and control, using hands and feet.

Health and Wellbeing Focuses:

Mental and Emotional Wellbeing

- Feeling (developing the ability to talk about them)
- Emotions (How they feel and learning ways to manage them)
- Feels and Reaction change depending on what is happening in and around me.



EXPRESSIVE ARTS

This term we will be focusing on art based on our topic of Vikings



Our additional focus will be drama throughout Term 1. Your child will explore movement and voice through exploring traditional tales and Harvest.

IDL

Our topic this term in Vikings



HOMEWORK

Homework will be handed out on a Thursday and due the following Wednesday.

Homework will usually be as follows but may change so please check your child's homework diary:

Spelling Homework - every week.

Please practise with your child throughout the week to help them learn the spelling rule.

Reading Homework - every week.

Please read with your child throughout the week. I would also encourage you to read a range of books to your child, perhaps at bedtime. This supports child's understanding of books and models good reading skills.

Numeracy and Maths - once a fortnight.

This will rotate between Sumdog or a written/practice a activity.

IDL (Topic) - once a term.

These tasks will have a longer timeframe.



SPAIN TOPIC AND SPANISH



Ms Romay will be teaching an IDL Topic about Spain and Spanish this term on Tuesday.

USEFUL WEBSITES

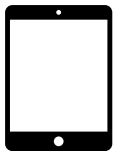
[Sumdog.com](https://www.sumdog.com) - maths and literacy.

[Topmarks](https://www.topmarks.co.uk): maths and literacy.

[Timestables.co.uk](https://www.timestables.co.uk)

[BBC Bitesize](https://www.bbc.com/bitesize)

[Epic Books](https://www.epicbooks.com)



OUR WEEK AT A GLANCE

Mon.

Tues.

Wed.

Thurs.

Fri.

P.E.

Homework Due

Homework Sent Home

P.E.

Ms Romay in
11:15 - 12:10