

Castle Douglas Nursery Rationale (Updated August 2025)

The nurseries vision, values and aims have been developed with all of our stakeholders and these are the foundation for the nursery's rationale.

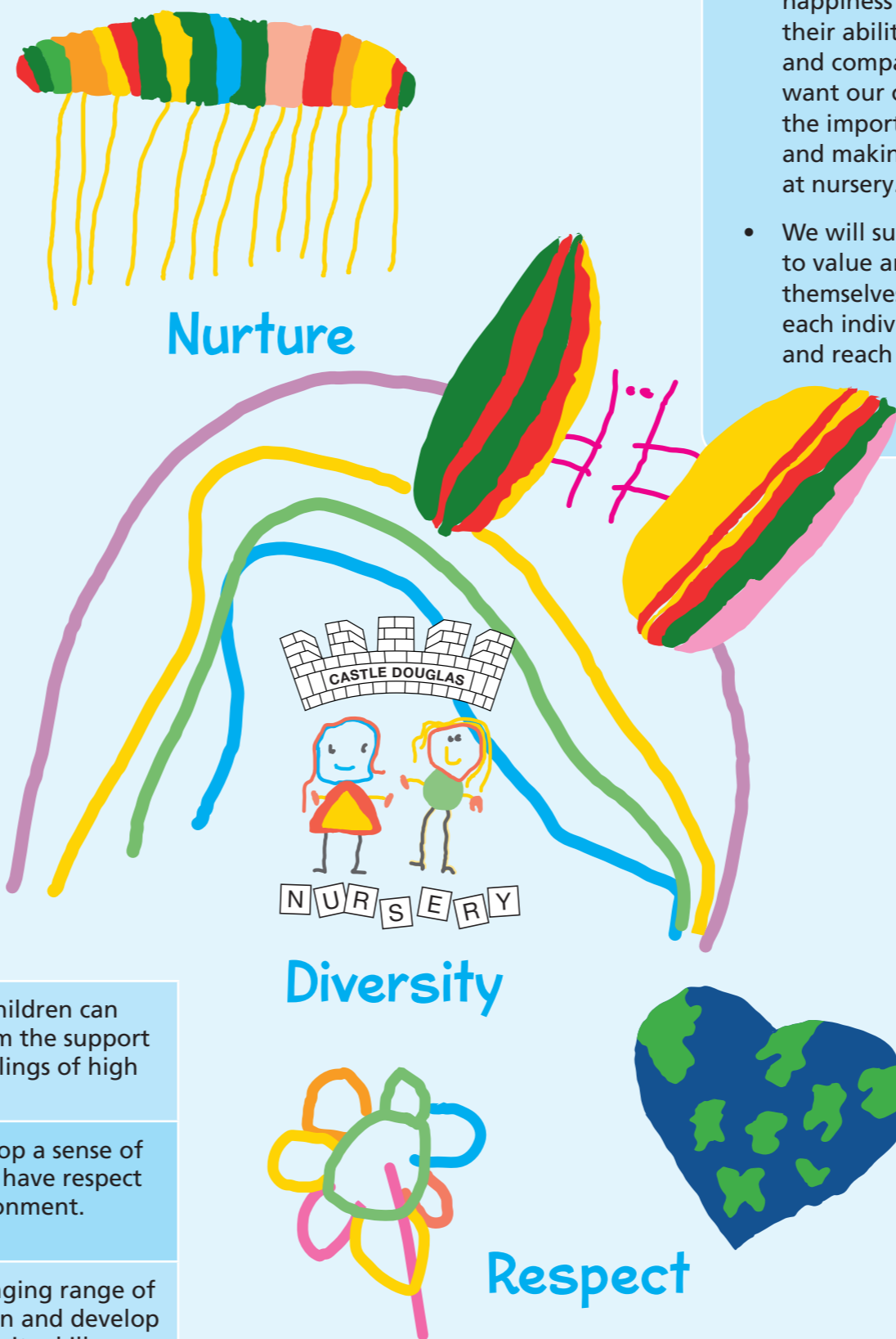
Our Vision

- Our vision at Castle Douglas Nursery is to embrace childhood as a magical time where play is at the heart of everything we do.
- We offer a wide range of learning opportunities with a particular focus on numeracy, literacy and health and wellbeing to ensure that our children are **successful learners** with rich attainment experiences. This will support our learners as they develop and grow to ensure that our community's youngest children experience high quality learning opportunities.
- We recognise that our staff have a significant part to play in laying the foundations for our children's future learning and development. This includes both moving through to school and beyond to ensure that our learners aim to be **responsible citizens** that respect others and value our local community and the wider world.
- Our early years setting is designed as a space where our children feel safe, supported and nurtured to become **confident individuals** in nursery and beyond. Through child led and adult initiated learning opportunities, we will support your child to **effectively contribute** to their learning.
- Parents and carers will actively be included in their child's nursery journey and we want to ensure that you feel confident that your child is receiving the very best care and learning possible.

Our Aims

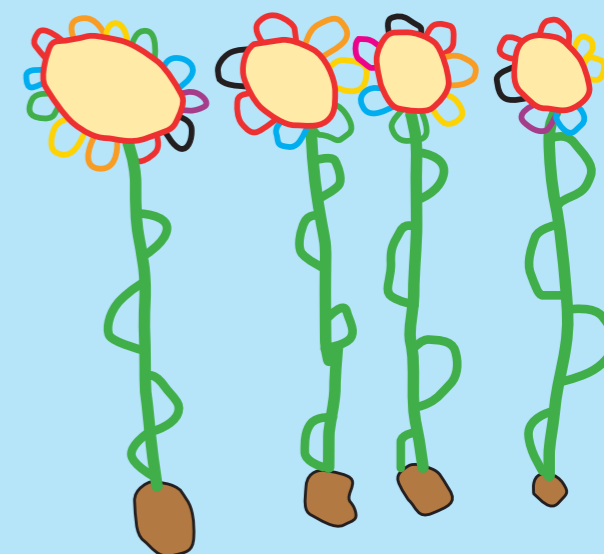
At Castle Douglas Nursery we aim to:

Provide a happy, secure and stimulating environment where your child's individual learning and needs are acknowledged, embraced and met.	Provide an environment where children can grow in confidence and give them the support to become independent with feelings of high self-worth.
To equally value children facing additional challenges and ensure that the environment, provision and support meets the child's individual needs.	To encourage each child to develop a sense of responsibility for themselves and have respect for others in their learning environment.
Heighten your child's awareness of race, religion, cultures and special educational needs of individuals in our setting and the wider world.	Provide a stimulating and challenging range of activities that will engage children and develop their curiosity, enquiry and creativity skills.
Develop a positive attitude towards learning, where your child is actively involved and fully engaged in their learning experiences.	Create positive transitions by incorporating all aspects of children's lives into their learning and building strong relationships with the local community.



Our Values

- We value your child's happiness and wellbeing and their ability to show kindness and compassion to others. We want our children to recognise the importance of integrity and making the right choices at nursery.
- We will support our children to value and challenge themselves and encourage each individual to aim high and reach for the stars.
- We value positive relationships with our local community and we will continue to develop these important links. Our children will have the opportunity to explore and learn from the wider community.
- We recognise the importance of our children feeling that they are right at the heart of their community and we highly value the fantastic learning opportunities that are on our doorstep.



Growing Together

We have actively consulted our parents in our Vision, Values and Aims, this is their statement:

"Our wish is for our children to learn in a child-centred environment where they are supported to reach their full potential. We want our children to have fun and be cared for by an enthusiastic and knowledgeable team, where nurturing our children is of the highest priority".

We will work towards the realisation of our Vision, Values and Aims at Castle Douglas Nursery through effective teamwork and open lines of communication with all of our stakeholders.