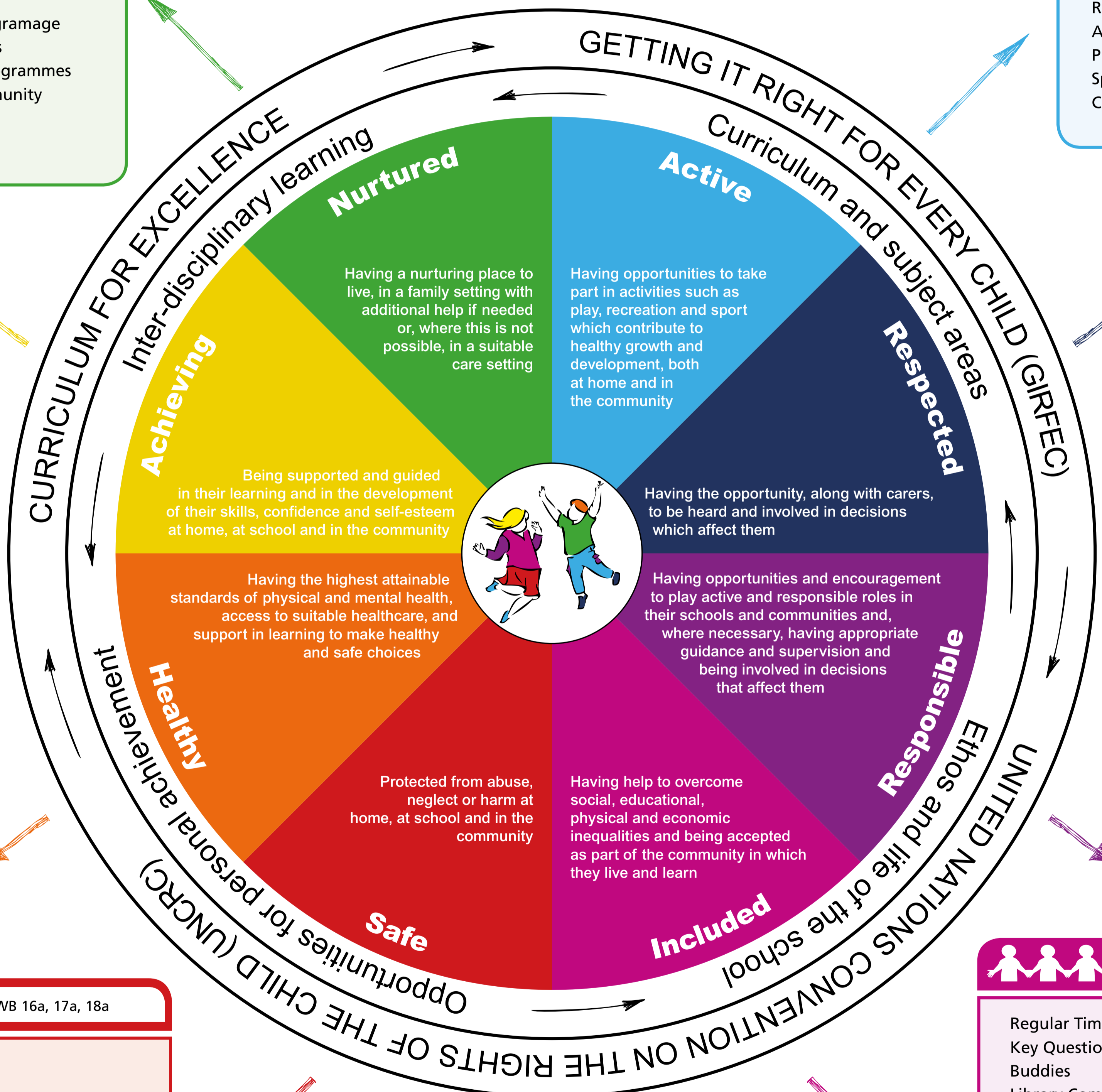




Health and Wellbeing: Responsibility of All



St Andrew's RC Primary



Nurtured [Links to: HWB 03a, 07a, 08a](#)

School ethos based on Gospel Values

| | |
|----------------------------------|-----------------------|
| Key Adult | Assemblies |
| Positive Praise Behaviour Policy | Whithorn Pilgrimage |
| Buddies | Cluster Events |
| House System | Transition Programmes |
| Golden time | Church Community |
| Nurture Groups | |
| Sharing of Learning Events | |

Active [Links to: HWB 25a, 27a, 28a](#)

| | |
|---------------------------|---------------------|
| 2 Hours Weekly PE | Marvellous Mondays |
| Daily Mile | Cricket Coaching |
| Residential Trips | Football Coaching |
| Active Schools Activities | Bike-ability |
| Play Leaders | Tennis Coaching |
| Sports Day | Woodland Wednesdays |
| Clubs and Competitions | Outdoor Learning |

Achieving [Links to: HWB 11a, 12a, 13a, 19a](#)

| | |
|---------------------------|------------------------------|
| Pupil Profiles | Civic Pride Competition |
| Learning Conversations | Regional Christmas Card Comp |
| Feedback/Next Steps | Pitch/Pulse/Magic Music Prog |
| Sharing of Learning Event | Author Visits |
| Soft finishes | Eco Group |
| Community Carol Singing | Science Fair |
| Talent Shows | Money Management |
| Careers Events | Handwriting Competition |
| Active Schools | |
| After School Clubs | |
| Speech Making Competition | |

Respected [Links to: HWB 01a, 02a, 04a, 05a, 09a](#)

| | |
|--|-------------------|
| Sacramental Preparation | Big Book Planning |
| Pupil Council | Pupil of the Week |
| Class Rules | House System |
| Enterprise Projects | Displays |
| Planning Sharing of Learning | |
| Self/Peer Assessment | |
| Assemblies - Celebrate Success | |
| Planning - IDL Key Questions of Interest | |

Healthy [Links to: HWB 06a, 15a-18a](#)

| | |
|------------------------------|------------------|
| Residential Trips | Choices for Life |
| Outdoor Learning | Food Diary |
| Playground Leaders | Daily Mile |
| Active Schools | |
| 1:1 dialogue with Key Adult | |
| Operation Safety | |
| School Police Officer Visits | |
| Healthy Eating - IDL Bundles | |

Responsible [Links to: HWB 09a, 10a, 11a, 12a, 13a](#)

| | |
|---|------------------------------|
| SCIAF fundraising | P1 Reading Buddies |
| Pope Francis Awards | Wet Play Monitors |
| Target Setting/Next Steps | House Captains/Vice Captains |
| Blogging | Library Committee |
| Food For Neighbours Mass | Outdoor Toys Monitors |
| Employability Skills | |
| Profiles/e-profiles | |
| Remembrance Day | |
| Leadership Skills - Buddies, Playground Leaders, Break time Clubs | |

Safe [Links to: HWB 16a, 17a, 18a](#)

- Secure Environment
- Risk Assessment
- Regular opportunity for 1:1 dialogue
- Transition Programme
- Keeping Safe - IDL Bundles
- Internet Safety - IDL Bundles
- School Police Officer Visits
- Choices for Life

Included [Links to: 05a, 08a, 10a, 11a, 12a, 14a, 44a, 44b, 45b](#)

| | |
|---|-------------------------------|
| Regular Timetabled 1:1 Dialogue | Nativity |
| Key Questions - Areas of Interest (IDL Bundles) | Christmas/Easter Performances |
| Buddies | Whole School Events: |
| Library Committee | World Book Day |
| Eco Schools | Poetry Week |
| Sports Committee | World of Work |
| Fairtrade Activities | Sports Day |
| Participation in Masses - Parish & School | Scots Language Celebration |
| Big Burns Supper | St Andrew's Day Celebration |
| Assemblies | Parties |
| Plan Sharing of Learnings | P7 End of Term Show |
| Soft Finishes | Carol Service |