

Early/first level Friday Practical Maths-

Tessellation garden path design challenge

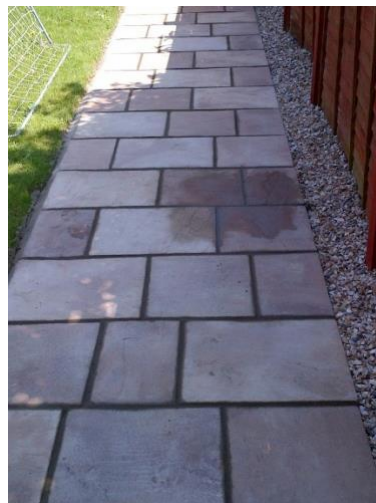
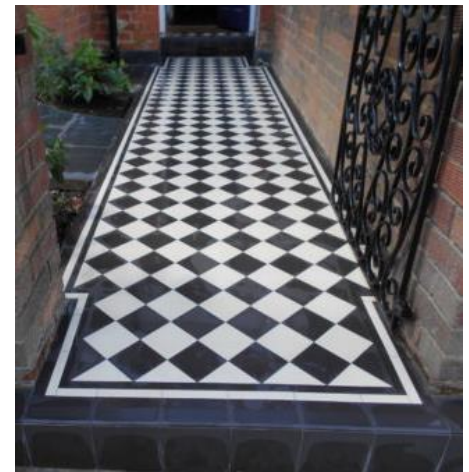
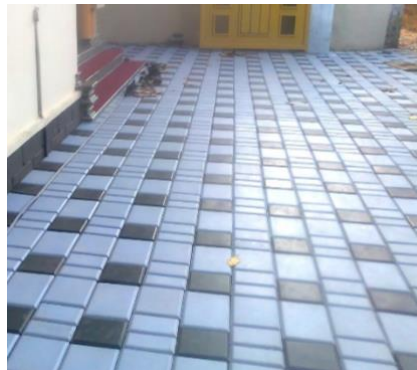
We have looked at tessellation patterns for a couple of weeks now. This week I would like you to design a garden path using tessellation patterns.

Think about the different examples of tessellation patterns that you found and the shapes that were used in them. Remember a tessellation pattern uses 2D shapes and must cover a surface with no gaps or overlaps.

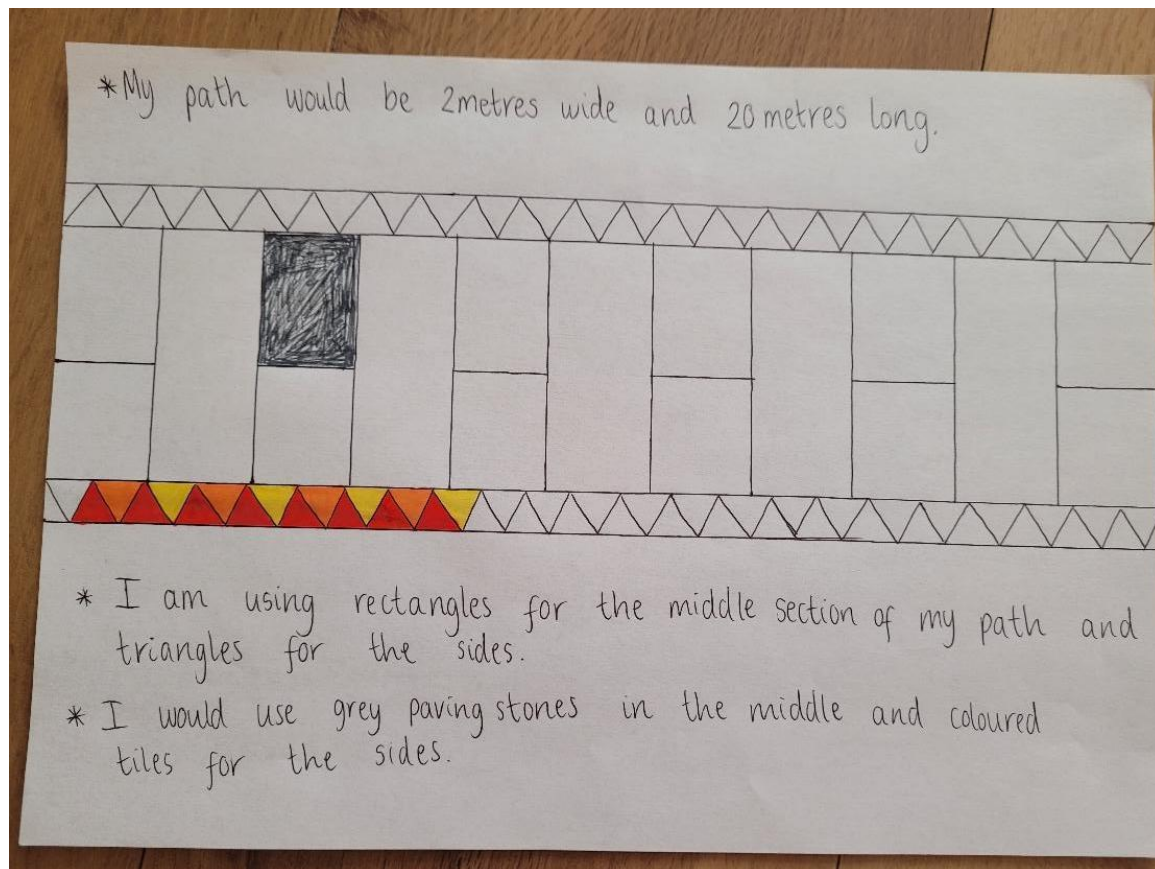
Things to think about-

- What shapes will you use in your path design?
- What materials would you use?
- What colours would you use?
- How long and wide will your path be?

Look at some of the examples of different paths.



Draw your garden path design (remember to use a ruler) and label it.
Here is my design- it is a work in progress and I'm sorry the quality of the photo hasn't turned out great! I have started to add colour to give you an idea of what the final design would look like.



Have fun creating your tessellation/ tiling garden path design.
Remember to share them with us on the blog!