

Mad about... **Deadly Creatures**



▲ **California newt**

Where found: Coasts and mountains of California, USA

Eats: Snails, slugs, worms and insects

Why deadly?: It has very poisonous skin that can easily kill predators. The poison can also be deadly to humans.

Did you know: The newt's main enemy is the garter snake. It is one of very few animals that is not harmed by the newt's poison.



▲ **Black widow spider**

Where found: Worldwide

Eats: Insects, spiders and woodlice

Why deadly?: It has a deadly venomous bite.

Did you know: A black widow spider's poison is fifteen times more powerful than the poison of a rattlesnake.



Anaconda ▲

Where found: In and around rivers in the South American rainforest

Eats: Fish, frogs, snakes, deer

Why deadly?: It has very long, strong body to squeeze and crush its prey to death.

Did you know: Anacondas have very stretchy jaws so that they can swallow animals much bigger than their heads.



◀ **American alligator**

Where found: Swamps, rivers and lakes in the south-east USA

Eats: Fish, snakes, turtles, caiman and birds

Why deadly?: It has razor-sharp teeth and a bone-crushing bite.

Did you know: The alligator's tail takes up half its length. It uses it for swimming and for lashing out at its enemies.



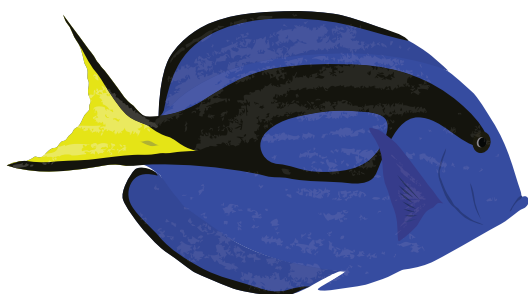
▲ Polar bear

Where found: On and around the Arctic Ocean

Eats: Seals

Why deadly?: It has a strong, powerful body and massive paws.

Did you know: Polar bears sniff out a seal's breathing hole in the ice, then grab the seal when it comes up for air.



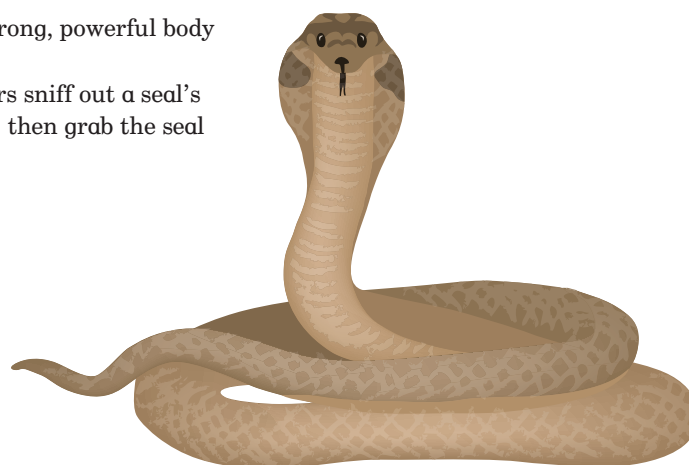
Surgeonfish ▲

Where found: Around coral reefs in warm seas

Eats: Algae growing on rocks or coral

Why deadly?: It has sharp, poisonous spines on either side of its tail.

Did you know: Surgeonfish can flick out the spines on their tails like knives, to warn off predators.



▲ King cobra

Where found: Forests in India and South-East Asia

Eats: Other snakes, lizards

Why deadly?: It has a very venomous bite.

Did you know: When a king cobra is angry or frightened, it spreads out the hood of skin around its neck like a fan.

Jaguar ▶

Where found: Central and South America

Eats: Deer, tapirs, monkeys and caiman

Why deadly?: A jaguar has a very powerful, strong body, and sharp teeth and claws.

Did you know: It has such a powerful bite that it can even crack open turtle shells.

